

- Map Details**
- HDD Entry/Exit Points
 - Pipeline Centerline
 - - - HDD Pipeline Centerline
 - ▭ Construction Workspaces
 - NHD Waters

- Alternative Project Pipelines**
- ▭ Estuarine and Marine Wetland
 - ▭ Freshwater Emergent Wetland
 - ▭ Freshwater Forested/Shrub Wetland
 - ▭ Freshwater Pond
 - ▭ Lake
 - ▭ Riverine

1 inch = 500 feet

Coordinate System: NAD 1983 2011
 StatePlane Texas South FIPS 4205 Ft US
 Projection: Lambert Conformal Conic
 Datum: NAD 1983 2011
 Units: Foot US

Figure 23
Alternative Project Detail Map
 Construction, Operation, and
 Decommissioning Procedures
 Bluewater SPM Project
 Bluewater Texas Terminal LLC
 Date: May 10, 2019



Figure 24
Alternative Project Detail Map
 Construction, Operation, and
 Decommissioning Procedures
 Bluewater SPM Project
 Bluewater Texas Terminal LLC

1 inch = 500 feet

Coordinate System: NAD 1983 2011
 StatePlane Texas South FIPS 4205 Ft US
 Projection: Lambert Conformal Conic
 Datum: NAD 1983 2011
 Units: Foot US

Map Details

- HDD Entry/Exit Points
- Alternative Project Pipelines
 - Pipeline Centerline
 - HDD Pipeline Centerline
 - Construction Workspaces
 - NHD Waters
- NWI Wetlands
 - Estuarine and Marine Wetland
 - Freshwater Emergent Wetland
 - Freshwater Forested/Strub Wetland
 - Freshwater Pond
 - Lake
 - Riverine

LLOYD
 ENGINEERING, INC.

Date: May 10, 2019

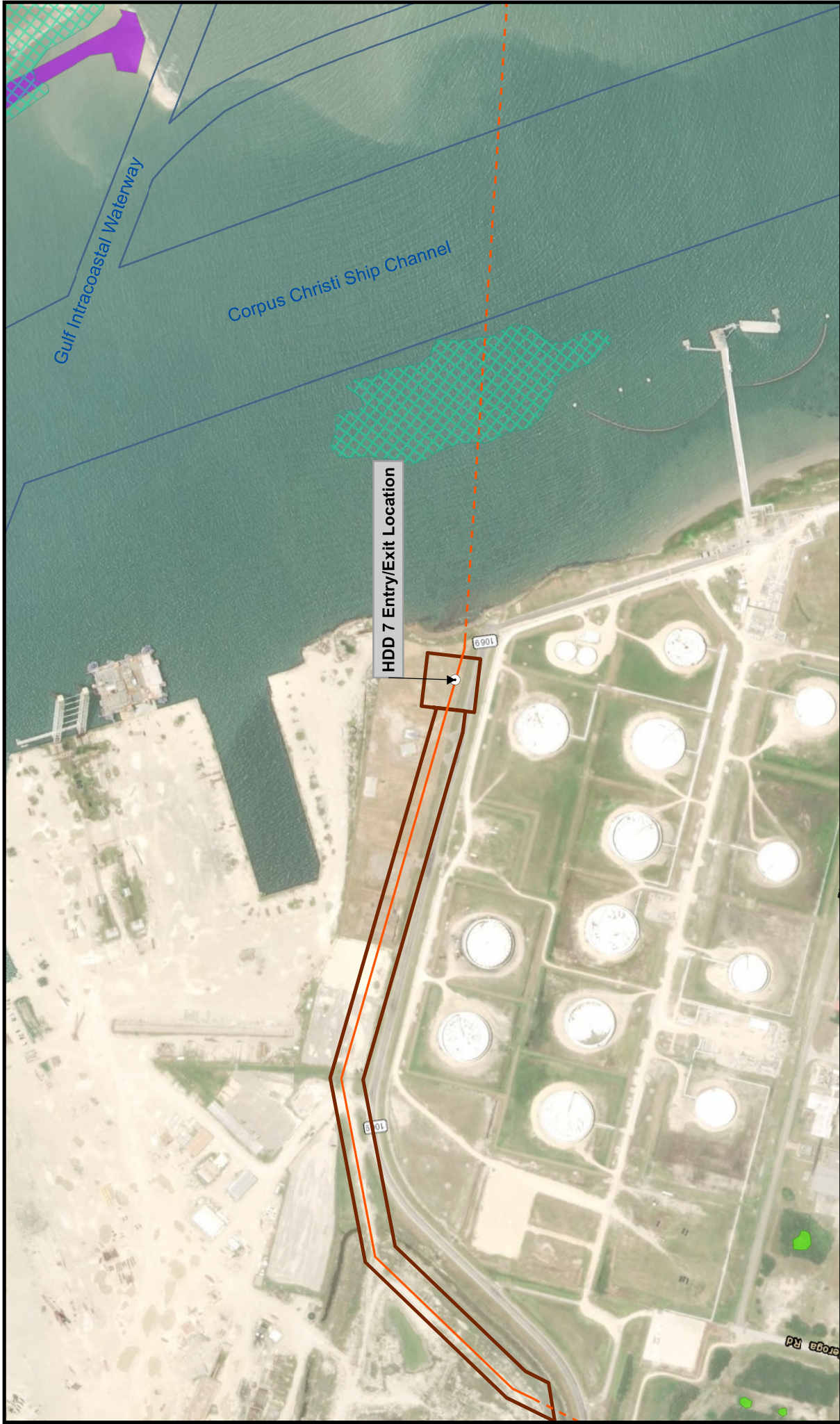


Figure 25
Alternative Project Detail Map
 Construction, Operation, and
 Decommissioning Procedures
 Bluewater SPM Project
 Bluewater Texas Terminal LLC
 Date: May 10, 2019

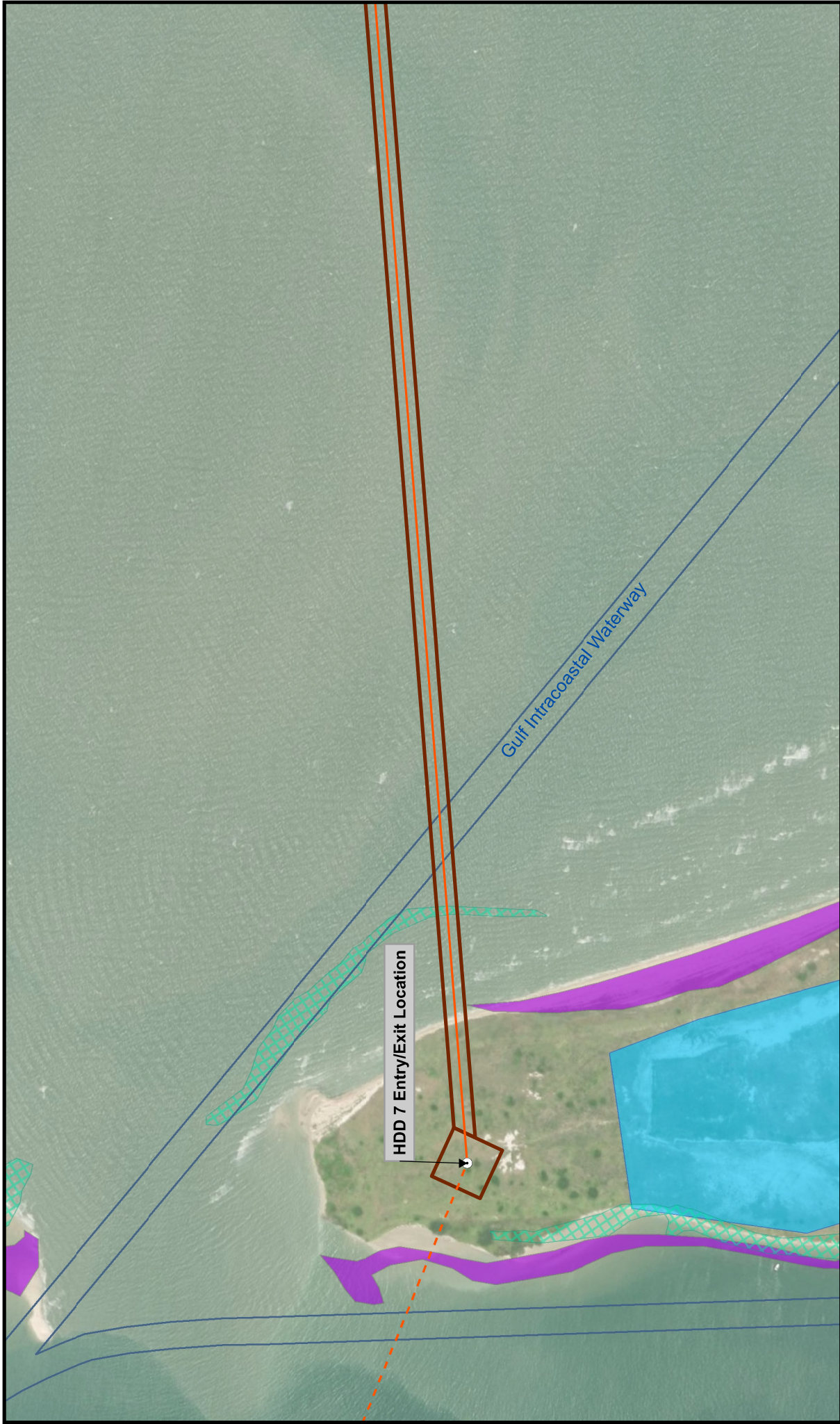
1 inch = 500 feet

Coordinate System: NAD 1983 2011
 StatePlane Texas South FIPS 4205 Ft US
 Projection: Lambert Conformal Conic
 Datum: NAD 1983 2011
 Units: Foot US

Map Details

- HDD Entry/Exit Points
- Alternative Project Pipelines
 - Pipeline Centerline
 - HDD Pipeline Centerline
 - Construction Workspaces
 - shipchannels
 - Oyster Reef (TPWD)
 - Seagrass Areas
- NWI Wetlands
 - Estuarine and Marine Wetland
 - Freshwater Emergent Wetland
 - Freshwater Forested/Shrub Wetland
 - Freshwater Pond
 - Lake
 - Riverine





HDD 7 Entry/Exit Location

Gulf Intracoastal Waterway



Map Details

- HDD Entry/Exit Points
- Alternative Project Pipelines**
 - Pipeline Centerline
 - HDD Pipeline Centerline
 - Construction Workspaces
 - shipchannels
 - Oyster Reef (TPWD)
 - Seagrass Areas

NWI Wetlands

- Estuarine and Marine Wetland
- Freshwater Emergent Wetland
- Freshwater Forested/Shrub Wetland
- Freshwater Pond
- Lake
- Rivertine

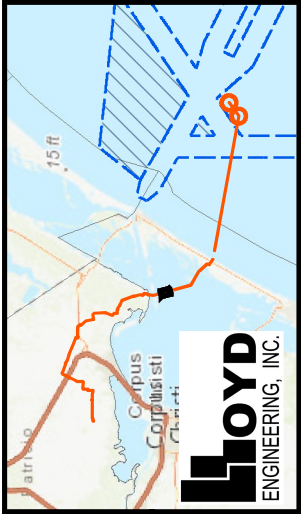
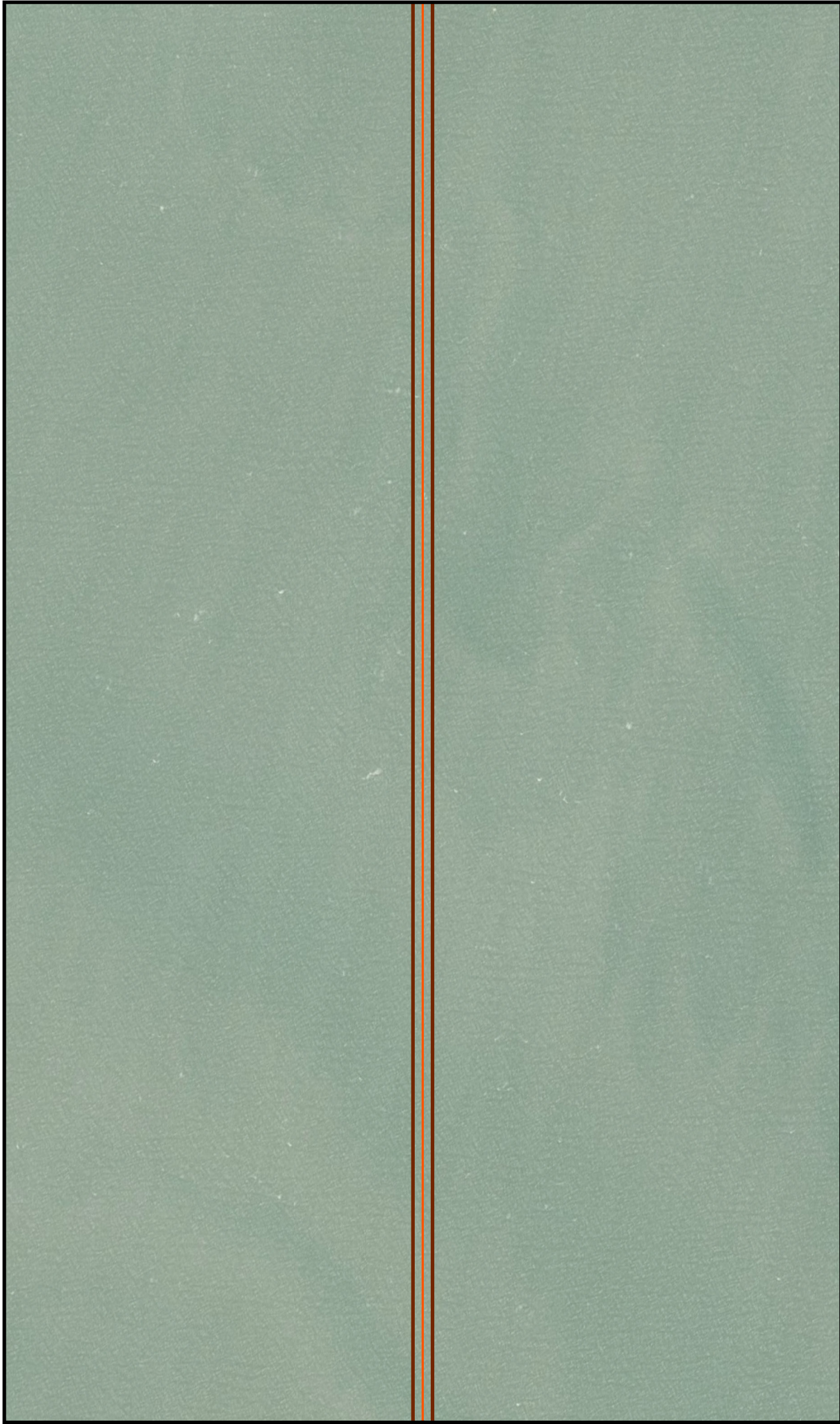
1 inch = 500 feet

0 250 500 Feet

Coordinate System: NAD 1983 2011
 StatePlane Texas South FIPS 4205 Ft US
 Projection: Lambert Conformal Conic
 Datum: NAD 1983 2011
 Units: Foot US

Figure 26
Alternative Project Detail Map
 Construction, Operation, and
 Decommissioning Procedures
 Bluewater SPM Project
 Bluewater Texas Terminal LLC

Date: May 10, 2019



Map Details

- HDD Entry/Exit Points
- Pipeline Centerline
- HDD Pipeline Centerline
- Construction Workspaces
- shipchannels
- Oyster Reef (TPWD)
- Seagrass Areas

Alternative Project Pipelines

- Estuarine and Marine Wetland
- Freshwater Emergent Wetland
- Freshwater Forested/Shrub Wetland
- Freshwater Pond
- Lake
- Rivertine

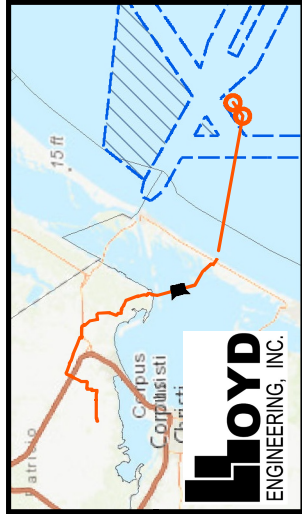
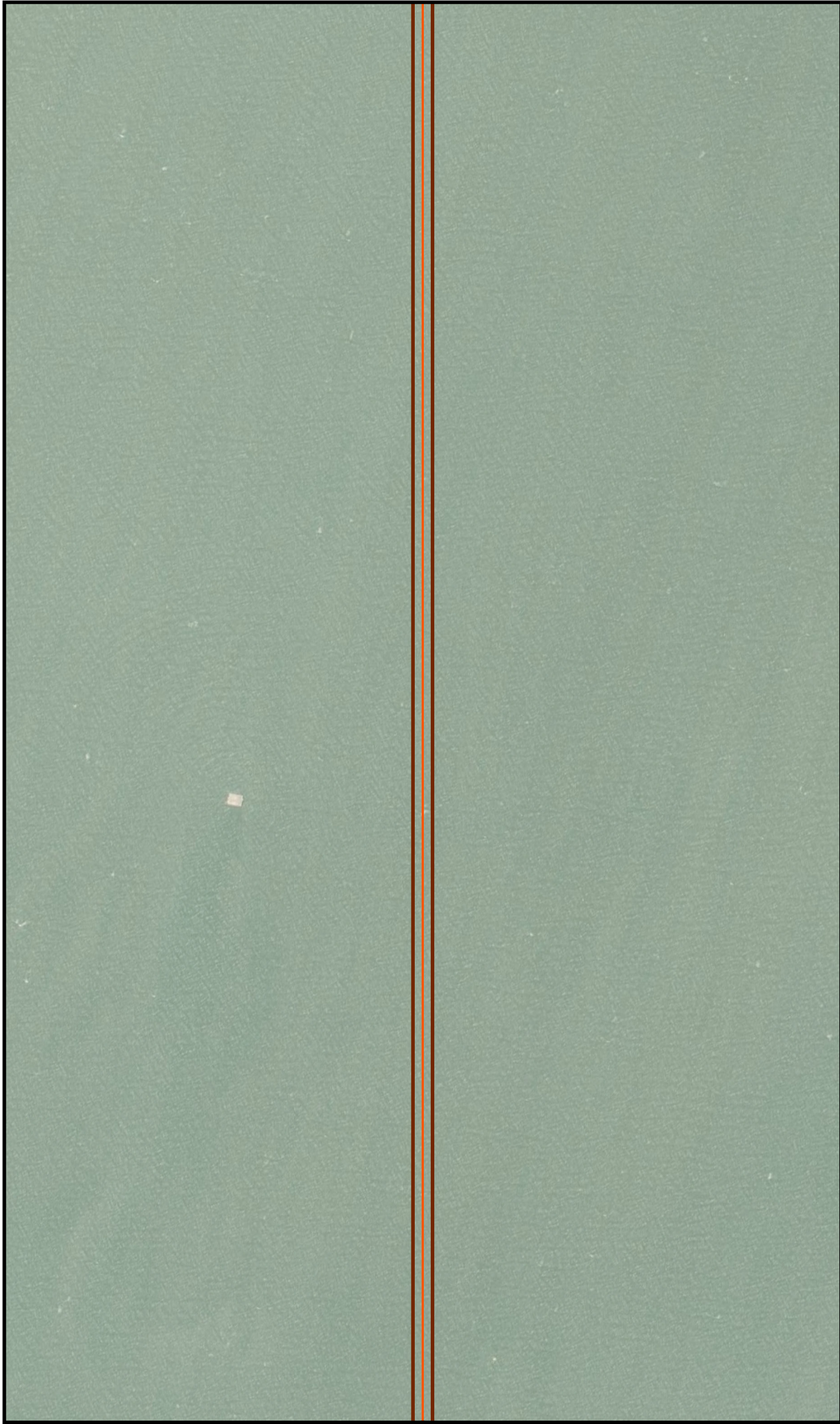
NWI Wetlands

1 inch = 500 feet

0 250 500 Feet

Coordinate System: NAD 1983 2011
 StatePlane Texas South FIPS 4205 Ft US
 Projection: Lambert Conformal Conic
 Datum: NAD 1983 2011
 Units: Foot US

Figure 27
Alternative Project Detail Map
 Construction, Operation, and
 Decommissioning Procedures
 Bluewater SPM Project
 Bluewater Texas Terminal LLC
 Date: May 10, 2019



- Map Details**
- HDD Entry/Exit Points
- Alternative Project Pipelines**
- Pipeline Centerline
 - - - HDD Pipeline Centerline
 - ▭ Construction Workspaces
 - shipchannels
 - ⬢ Oyster Reef (TPWD)
 - ▨ Seagrass Areas

- NWI Wetlands**
- Estuarine and Marine Wetland
 - Freshwater Emergent Wetland
 - Freshwater Forested/Shrub Wetland
 - Freshwater Pond
 - Lake
 - Rivertine

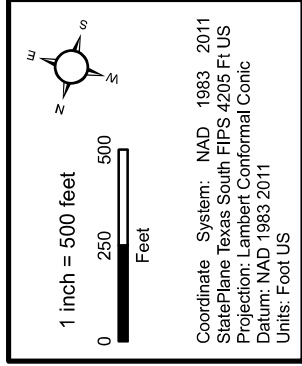
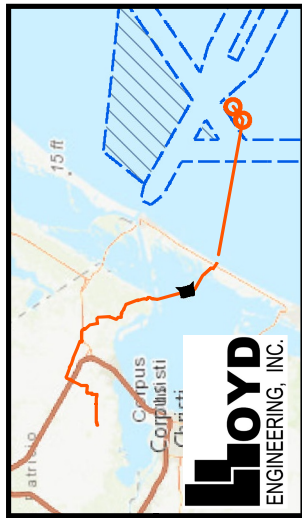
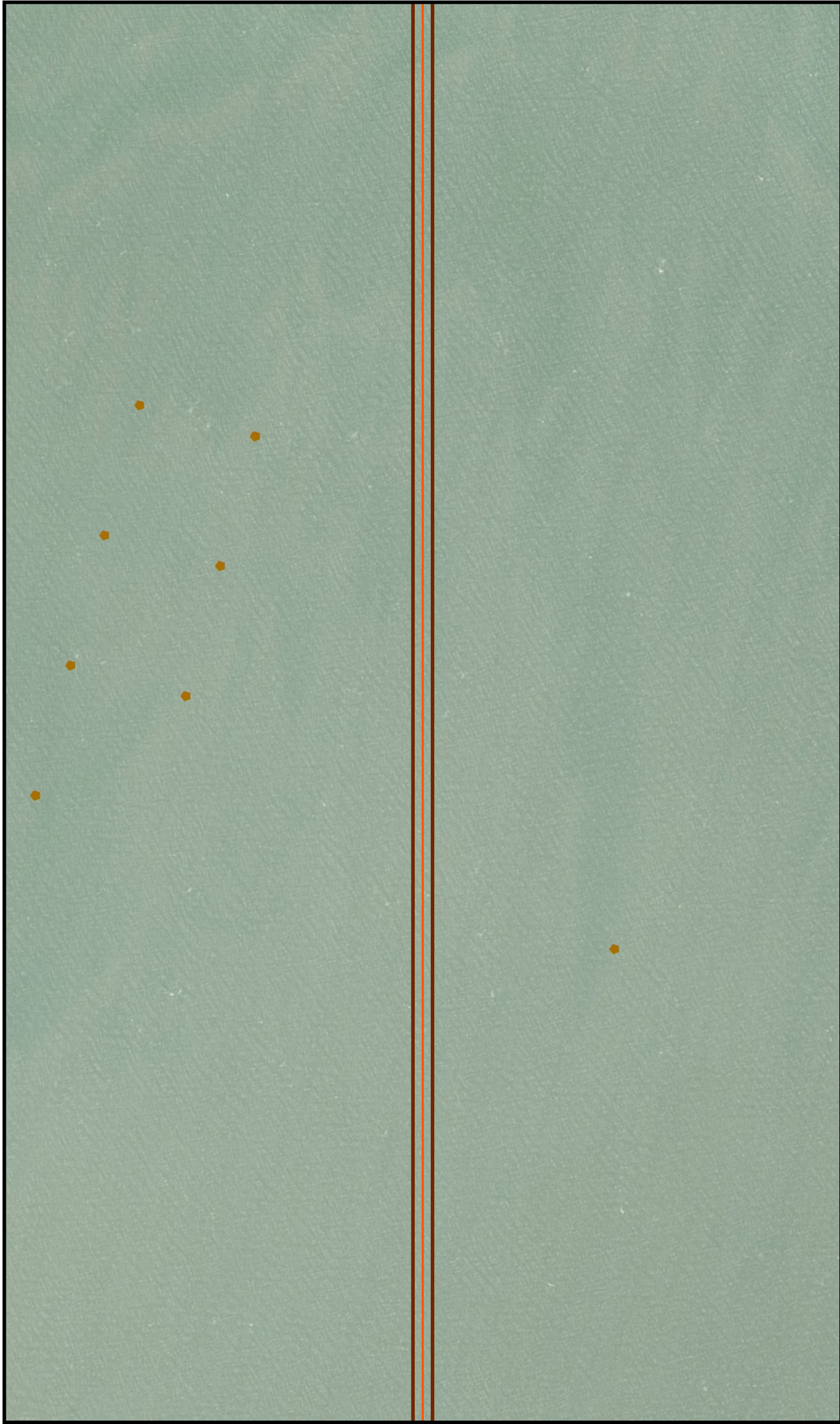


Figure 28
Alternative Project Detail Map
 Construction, Operation, and
 Decommissioning Procedures
 Bluewater SPM Project
 Bluewater Texas Terminal LLC

Date: May 10, 2019



- Map Details**
- HDD Entry/Exit Points
- Alternative Project Pipelines**
- Pipeline Centerline
 - HDD Pipeline Centerline
 - Construction Workspaces
 - shipchannels
 - Oyster Reef (TPWD)
 - Seagrass Areas

- NWI Wetlands**
- Estuarine and Marine Wetland
 - Freshwater Emergent Wetland
 - Freshwater Forested/Shrub Wetland
 - Freshwater Pond
 - Lake
 - Rivertine

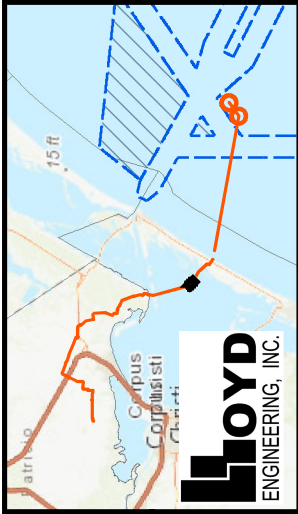
1 inch = 500 feet

0 250 500 Feet

Coordinate System: NAD 1983 2011
 StatePlane Texas South FIPS 4205 Ft US
 Projection: Lambert Conformal Conic
 Datum: NAD 1983 2011
 Units: Foot US

Figure 29
Alternative Project Detail Map
 Construction, Operation, and
 Decommissioning Procedures
 Bluewater SPM Project
 Bluewater Texas Terminal LLC

Date: May 10, 2019



Map Details

- HDD Entry/Exit Points
- Pipeline Centerline
- HDD Pipeline Centerline
- Construction Workspaces
- shipchannels
- Oyster Reef (TPWD)
- Seagrass Areas

Alternative Project Pipelines

- Estuarine and Marine Wetland
- Freshwater Emergent Wetland
- Freshwater Forested/Shrub Wetland
- Freshwater Pond
- Lake
- Rivertine

NWI Wetlands

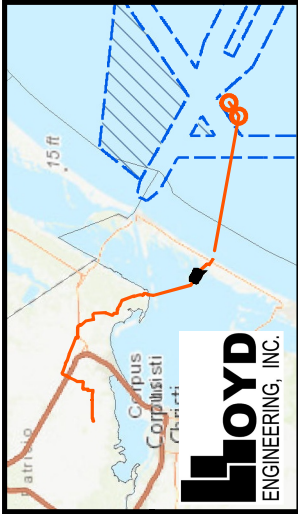
1 inch = 500 feet

0 250 500 Feet

Coordinate System: NAD 1983 2011
 StatePlane Texas South FIPS 4205 Ft US
 Projection: Lambert Conformal Conic
 Datum: NAD 1983 2011
 Units: Foot US

Figure 30
Alternative Project Detail Map
 Construction, Operation, and
 Decommissioning Procedures
 Bluewater SPM Project
 Bluewater Texas Terminal LLC

Date: May 10, 2019



Map Details

- HDD Entry/Exit Points
- Pipeline Centerline
- HDD Pipeline Centerline
- Construction Workspaces
- shipchannels
- Oyster Reef (TPWD)
- Seagrass Areas

- NWI Wetlands**
- Estuarine and Marine Wetland
 - Freshwater Emergent Wetland
 - Freshwater Forested/Shrub Wetland
 - Freshwater Pond
 - Lake
 - Rivertine

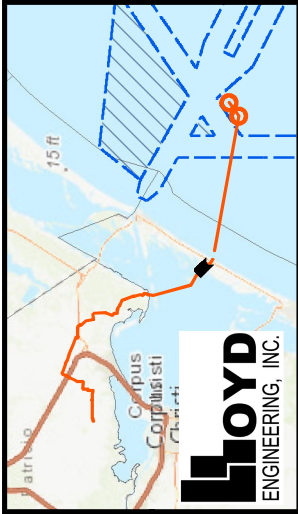
1 inch = 500 feet

0 250 500
Feet

Coordinate System: NAD 1983 2011
 StatePlane Texas South FIPS 4205 Ft US
 Projection: Lambert Conformal Conic
 Datum: NAD 1983 2011
 Units: Foot US

Figure 31
Alternative Project Detail Map
 Construction, Operation, and
 Decommissioning Procedures
 Bluewater SPM Project
 Bluewater Texas Terminal LLC

Date: May 10, 2019



- Map Details**
- HDD Entry/Exit Points
 - Alternative Project Pipelines**
 - Pipeline Centerline
 - - - HDD Pipeline Centerline
 - ▭ Construction Workspaces
 - shipchannels
 - Oyster Reef (TPWD)
 - ▨ Seagrass Areas

- NWI Wetlands**
- Estuarine and Marine Wetland
 - Freshwater Emergent Wetland
 - Freshwater Forested/Shrub Wetland
 - Freshwater Pond
 - Lake
 - Rivertine

1 inch = 500 feet

0 250 500 Feet

Coordinate System: NAD 1983 2011
 StatePlane Texas South FIPS 4205 Ft US
 Projection: Lambert Conformal Conic
 Datum: NAD 1983 2011
 Units: Foot US

Figure 32
Alternative Project Detail Map
 Construction, Operation, and
 Decommissioning Procedures
 Bluewater SPM Project
 Bluewater Texas Terminal LLC
 Date: May 10, 2019

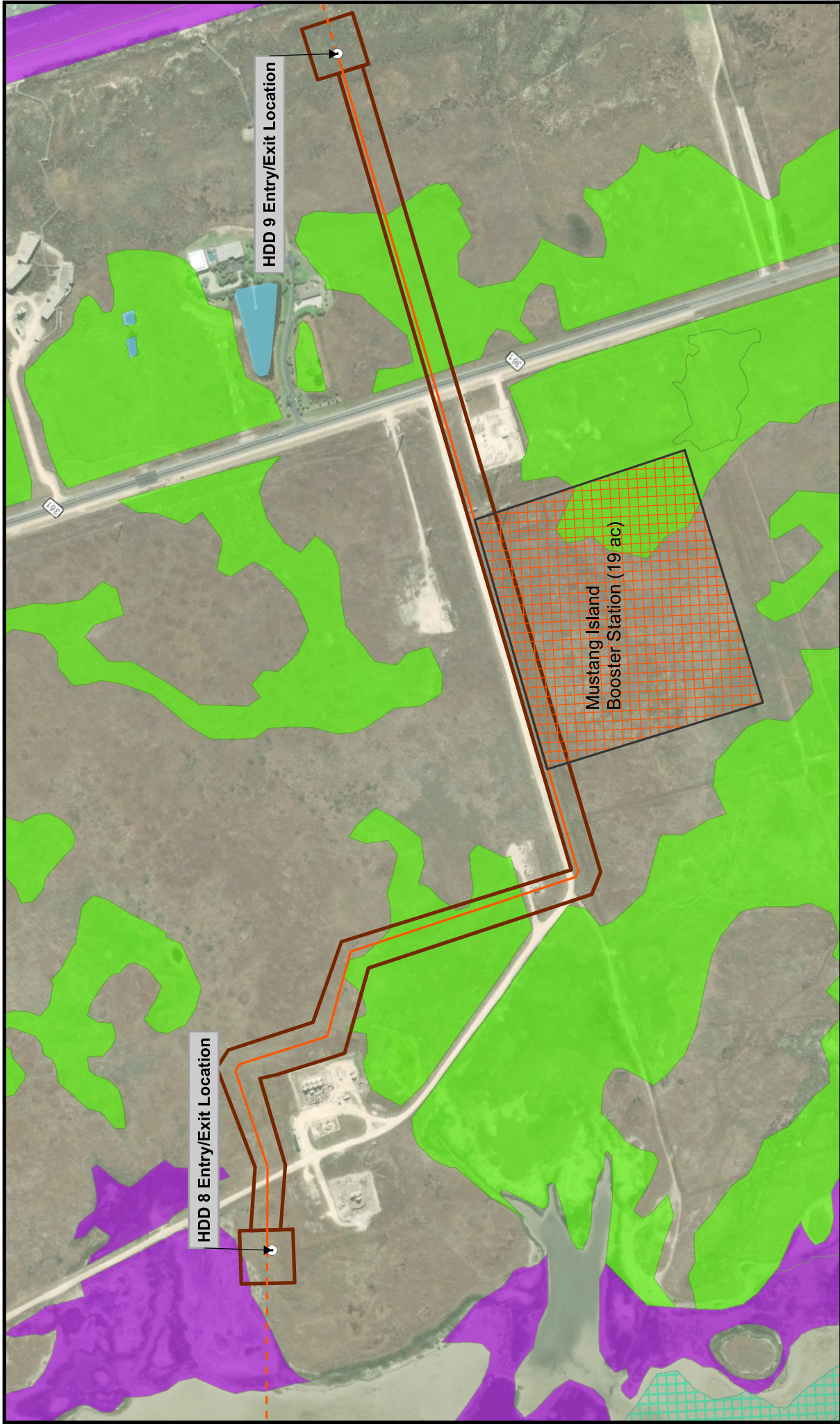


Figure 33
Alternative Project Detail Map
 Construction, Operation, and
 Decommissioning Procedures
 Bluewater SPM Project
 Bluewater Texas Terminal LLC

Date: May 10, 2019

1 inch = 500 feet

0 250 500 Feet

Coordinate System: NAD 1983 2011
 StatePlane Texas South FIPS 4205 Ft US
 Projection: Lambert Conformal Conic
 Datum: NAD 1983 2011
 Units: Foot US

Map Details

- HDD Entry/Exit Points
- Alternative Booster Station
- Alternative Project Pipelines
- Pipeline Centerline
- HDD Pipeline Centerline
- Construction Workspaces
- shipchannels
- Oyster Reef (TPWD)
- Seagrass Areas
- NWI Wetlands
- Estuarine and Marine Wetland
- Freshwater Emergent Wetland
- Freshwater Forested/Shrub Wetland
- Freshwater Pond
- Lake
- Riverine

15 ft

Campus Corpus Christi

LLOYD
ENGINEERING, INC.



HDD 9 Entry/Exit Location



Map Details

- HDD Entry/Exit Points

Alternative Project Pipelines

- Pipeline Centerline
- - - HDD Pipeline Centerline
- ▭ Construction Workspaces
- shipchannels
- ⬢ Oyster Reef (TPWD)
- ▨ Seagrass Areas

NWI Wetlands

- Estuarine and Marine Wetland
- Freshwater Emergent Wetland
- Freshwater Forested/Shrub Wetland
- Freshwater Pond
- Lake
- Rivertine

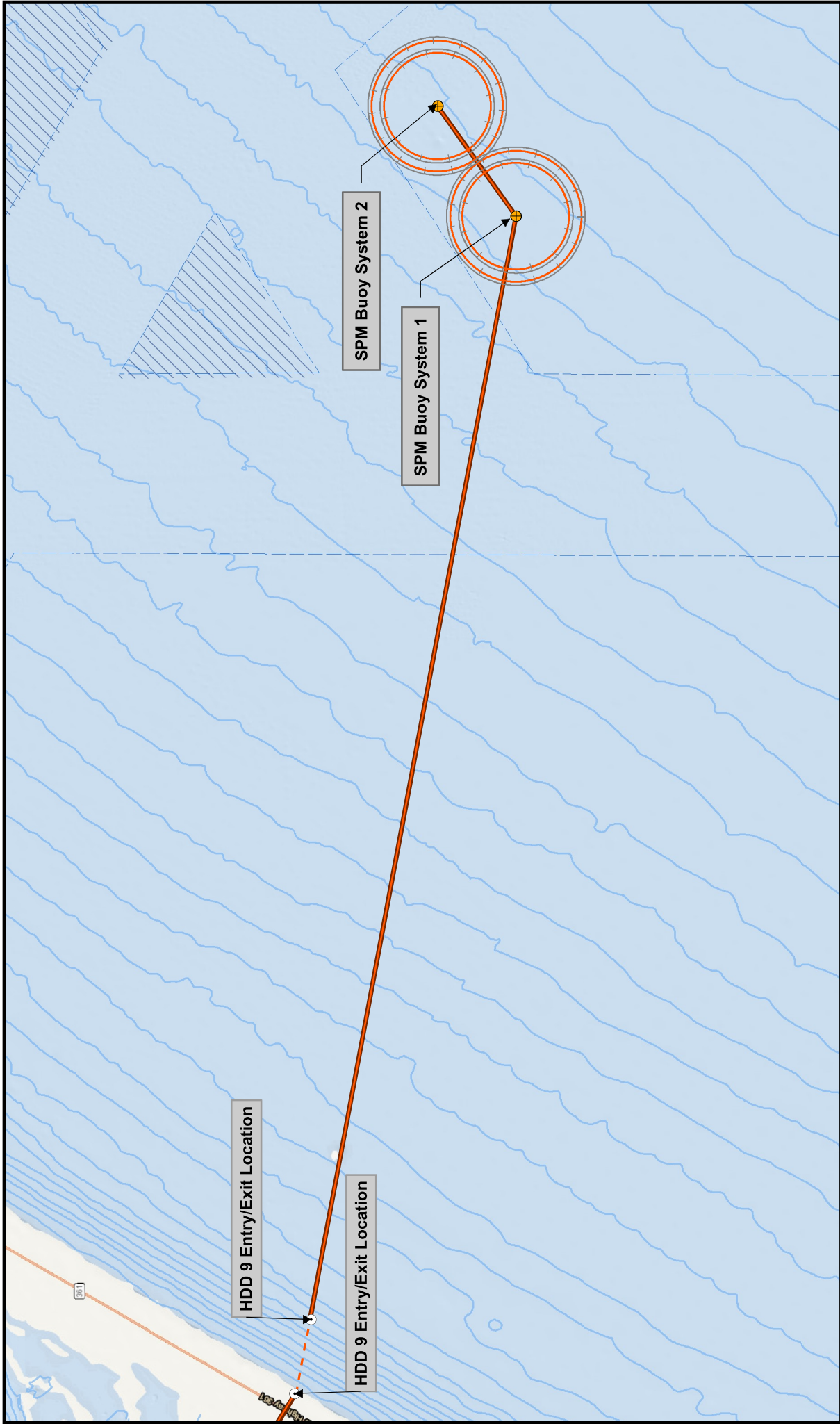
1 inch = 500 feet

0 250 500 Feet

Coordinate System: NAD 1983 2011
 StatePlane Texas South FIPS 4205 Ft US
 Projection: Lambert Conformal Conic
 Datum: NAD 1983 2011
 Units: Foot US

Figure 34
Alternative Project Detail Map
 Construction, Operation, and
 Decommissioning Procedures
 Bluewater SPM Project
 Bluewater Texas Terminal LLC

Date: May 10, 2019

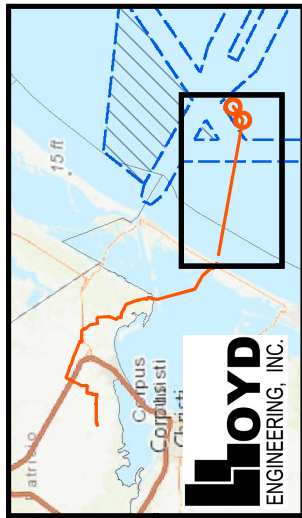


HDD 9 Entry/Exit Location

HDD 9 Entry/Exit Location

SPM Buoy System 2

SPM Buoy System 1



LOYD
ENGINEERING, INC.

Map Details

- HDD Entry/Exit Points
- Alternative SPM Buoy
- SPM Buoy ATBA and Safety Zone
- Alternative Project Pipelines
- Pipeline Centerline
- HDD Pipeline Centerline
- Construction Workspaces
- Navigational Fairways
- Anchorage Areas
- Bathymetry Contours (m)

1 inch = 9,020 feet

0 4,550 9,100 Feet

Coordinate System: NAD 1983 2011
 StatePlane Texas South FIPS 4205 Ft US
 Projection: Lambert Conformal Conic
 Datum: NAD 1983 2011
 Units: Foot US

Figure 35
Alternative Project Detail Map
 Construction, Operation, and
 Decommissioning Procedures
 Bluewater SPM Project
 Bluewater Texas Terminal LLC
 Date: May 10, 2019

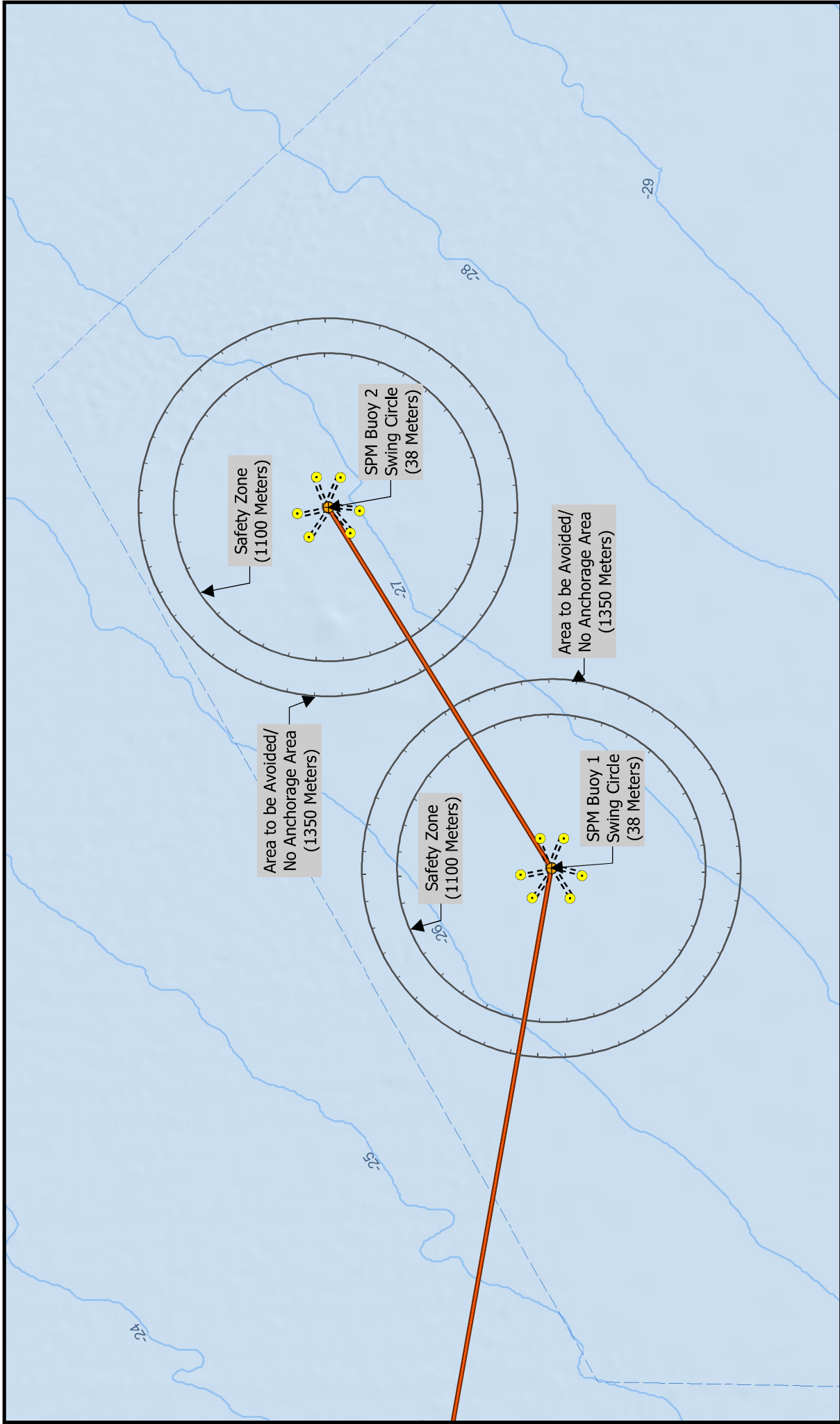


Figure 36
Alternative Project Detail Map
 Construction, Operation, and
 Decommissioning Procedures
 Bluewater SPM Project
 Bluewater Texas Terminal LLC
 Date: May 10, 2019

1 inch = 3,130 feet
 0 1,550 3,100 Feet

Coordinate System: GCS WGS 1984
 Datum: WGS 1984
 Units: Degree

Map Details

- HDD Entry/Exit Points
- Alternative SPM Buoy
- Alternative Project Pipelines
- Pipeline Centerline
- HDD Pipeline Centerline
- SPM_Safety_Zone
- CALM Anchor Pile
- CALM Anchor Chain
- Construction Workspaces
- Navigational Fairways
- Anchorage Areas
- Bathymetry Contours (m)

LOYD
 ENGINEERING, INC.