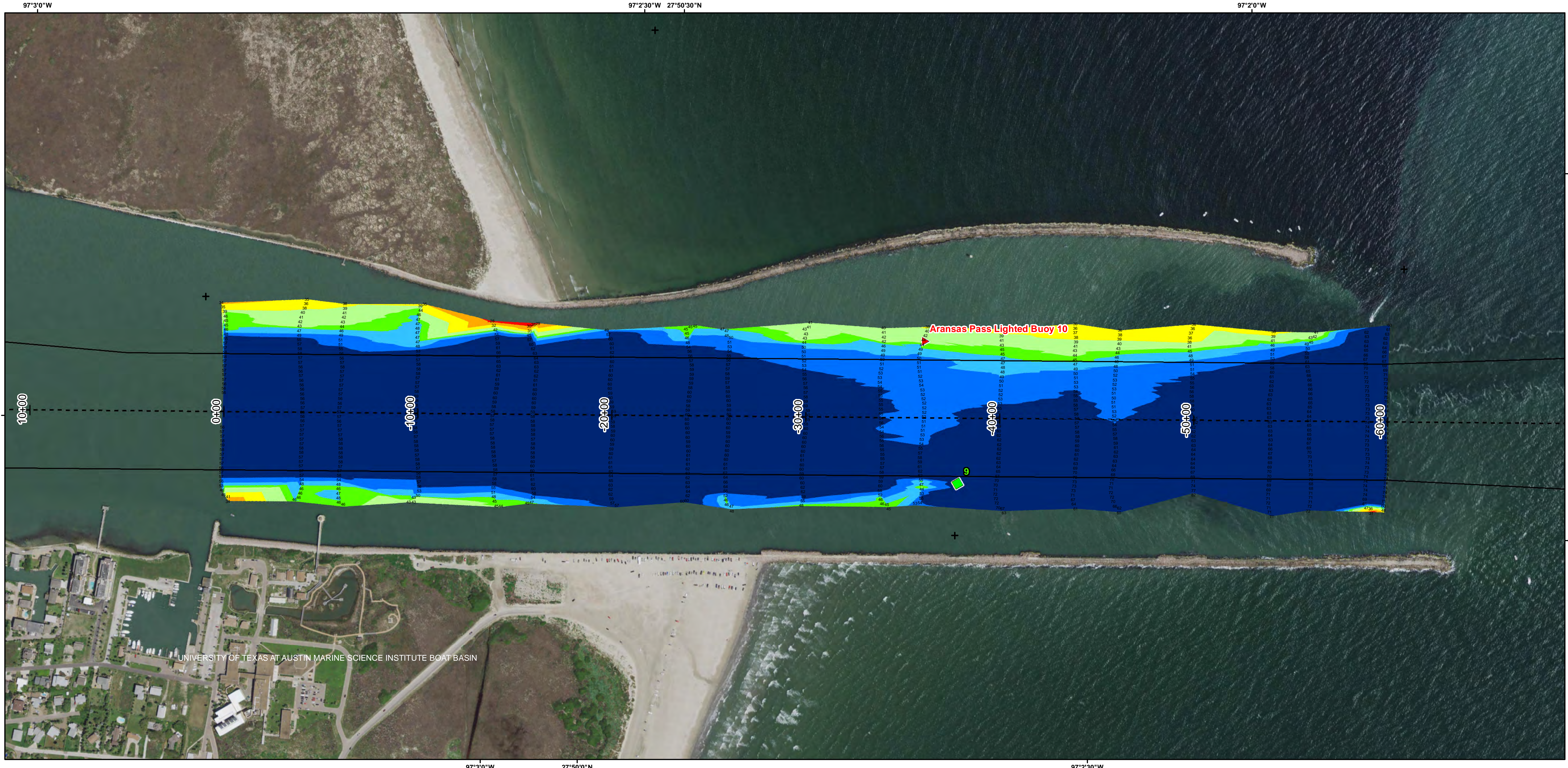
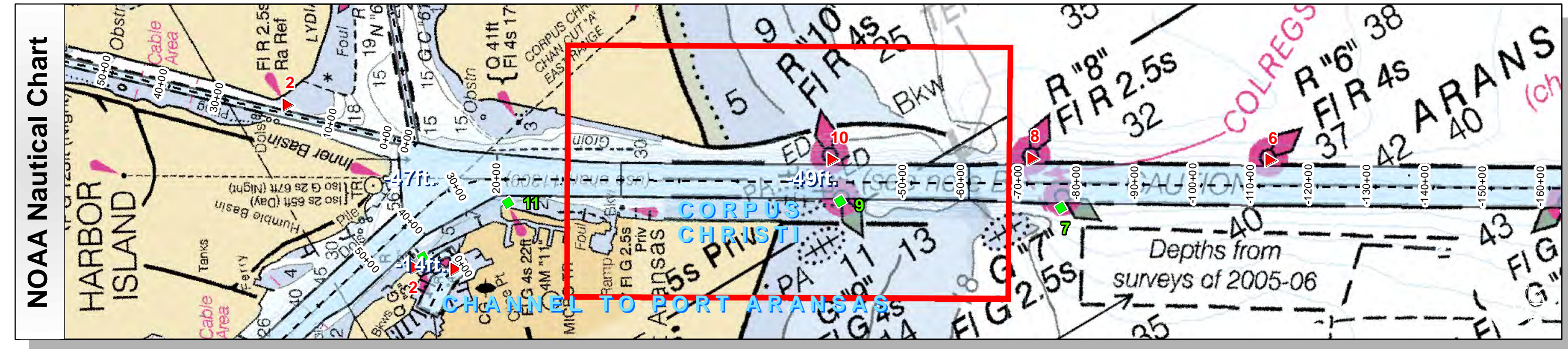


Corpus Christi Ship Channels: Jetty Channel



U.S. Army Corps of Engineers
Galveston District

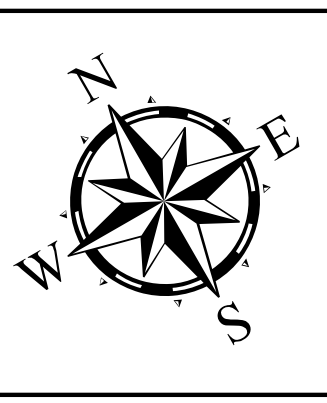


Channel Features	Aids to Navigation	MLLW
Channel Toe	★ Lights	0 - 20
Channel Center Line	▲ Red Side Aids	20 - 30
Channel Station Lines	■ Green Side Aids	30 - 35
Channel Dimensions	◆ Mooring Buoy	35 - 40
		40 - 45
		45 - 47
		47 - 50
		50 - 55
		< 55
		NOAA Bathymetry (DREDGING REACH EXTENT)
		0 - 10 10 - 15 15 - 20 20 - 25 25 - 30 30 - 50

NOTES:
 1. HORIZONTAL COORDINATES ARE REFERENCED TO TEXAS STATE PLANE COORDINATE SYSTEM, SOUTH CENTRAL ZONE NAD83 US SURVEY FEET.
 2. ELEVATIONS ARE REFERENCED TO MEAN LOWER LOW TIDE (MLLW) DATUM.
 3. THIS PROJECT WAS DESIGNED BY THE GALVESTON DISTRICT OF THE U.S. ARMY CORPS OF ENGINEERS. THE INITIALS AND SIGNATURES AND REGISTRATION DESIGNATIONS OF INDIVIDUALS APPEAR ON THESE PROJECT DOCUMENTS WITHIN THE SCOPE OF THEIR EMPLOYMENT AS REQUIRED BY ER1110-1-8152.

4. THE INFORMATION DEPICTED ON THIS SURVEY MAP REPRESENTS THE RESULTS OF SURVEYS MADE ON THE DATES INDICATED AND CAN ONLY BE CONSIDERED AS INDICATING THE GENERAL CONDITIONS EXISTING AT THAT TIME. THESE CONDITIONS ARE SUBJECT TO RAPID CHANGE DUE TO SHOALING EVENTS. A PRUDENT MARINER SHOULD NOT RELY EXCLUSIVELY ON THE INFORMATION PROVIDED HERE. REQUIRED BY 33 CFR 209.325
 5. FOR THE MOST UP TO DATE INFORMATION PLEASE CHECK OUR WEBSITE AT: [HTTP://WWW.SWG.USACE.ARMY.MIL/MISSIONS/NAVIGATION/HYDROGRAPHICS/SURVEYS/](http://www.swg.usace.army.mil/missions/navigation/hydrographics/surveys/)
 6. NOAA BATHYMETRY CONTOURS PRODUCED FROM HISTORIC BATHYMETRIC (HYDROGRAPHIC) SURVEYS CONDUCTED BY THE NOAA NATIONAL OCEAN SERVICE COAST SURVEY, AVAILABLE FROM THE NATIONAL GEOPHYSICAL DATA CENTER. SURVEYS VARY AS TO SOUNDING DENSITY, ACCURACY OF DEPTH, ACCURACY OF NAVIGATION, ZERO DATUM, DATE OF SURVEY AND TYPE OF INSTRUMENTATION. NOAA NAUTICAL CHARTS PROVIDED VIA RNC MAP SERVICE

Service Layer Credits: Sources: Esri, HERE, Garmin, Intermap, increment P Corp., GEBCO, USGS, FAO, NPS, NRCAN, GeoBase, IGN, Kadaster NL, Ordnance Survey, Esri Japan, METI, Esri China (Hong Kong), swisstopo, © OpenStreetMap contributors, and the GIS User Community
 Esri, Garmin, GEBCO, NOAA NGDC, and other contributors
 NOAA / NOS Special Projects / Office of Coast Survey
 Source: Esri, DigitalGlobe, GeoEye, Earthstar Geographics, CNES/Airbus DS, USDA, USGS, AeroGRID, IGN, and the GIS User Community



Coordinate System: NAD 1983 StatePlane Texas South FIPS 4205 Feet Projection: Lambert Conformal Conic / Datum: North American 1983	
NOAA Nautical Charts Extent	0 0.25 0.5 1 Miles
Hydrographic Survey Extent	0 170 340 680 1,020 Feet

Survey Date(s): 17 July 2018	Authorized Depth: -49ft.
Page: 3 of 29	Side Slope Ratio: (Rise : Run)
Scale: 1:3,000	Additional Imagery: © DigitalGlobe Inc.
Mapped by: MSAOX PAC	Print Date: 7/18/2018
Additional Info:	

HYDROGRAPHIC SURVEY
 U.S. ARMY ENGINEER DISTRICT
 CORPS OF ENGINEERS
 GALVESTON, TEXAS
 Jetty Channel
Station: -60+00 to 0+00
CORPUS CHRISTI
 PORT ARANSAS, TEXAS