

**NOTICE OF APPLICATION
INTERNAL USACE REVIEW
REGULATORY DIVISION – CORPUS CHRISTI REGULATORY FIELD OFFICE
STANDARD PERMIT**

Your review of the proposed project plans is requested in order to ascertain a no affect/will affect decision in relation to USACE concerns. Please provide written or e-mailed comments, and any special conditions that would be needed if a permit is issued, to the POC by the comments-due date. Negative replies also requested.

APPLICATION NUMBER	REGULATORY PROJECT MANAGER	DATE NOTICE ISSUED	COMMENTS DUE BY (5 WORKING DAYS):
SWG-2018-00789	Robert Jones 361-814-5847 ext 1010	29 July 2019	2 Aug 2019

APPLICANT: Axis Midstream Holdings, LLC
5005 Riverway, Suite 110
Houston, Texas 77056
POC: David O'Dell
Telephone: 713-623-2412
Email: dodell@midstream.com

AGENT: Project Consulting Services, Inc.
1800 West Loop South, Suite 900
Houston, Texas 77027
POC: Robert Ganczak
Telephone: 713-407-2480
Email: rganczak@projectconsulting.com

LOCATION: The proposed project would start at the proposed Midway Tank Farm Facility (Midway) located near the intersection of Farm to Market (FM) 893 and County Road (CR) 2004, 5 miles south of Taft, San Patricio County, Texas. From there, the proposed pipelines would head in a northeast direction crossing State Highway (SH) 181, where they would take a dogleg southeast towards Aransas Pass, San Patricio County, Texas, where they would terminate at the proposed Redfish Tank Farm Facility (Redfish) off FM 2725. From there, the proposed pipelines would cross the Gulf Intracoastal Water Way (GIWW) and Redfish Bay where they would terminate at the proposed Harbor Island Terminal Facility (Harbor) in Port Aransas, Nueces County, Texas. The project can be located on the U.S.G.S. quadrangle maps titled: Taft, Gregory, Aransas Pass, Ingleside-On-the-Bay, and Port Aransas, Texas.

LATITUDE & LONGITUDE (NAD 83):

Midway Facility: Latitude: 27.90524 N; Longitude: 97.40482 W

Aransas Pass Staging Facility: Latitude: 27.876527 N; Longitude: 97.158305 W

GIWW-HDD Temp Workspace: Latitude 27.877696 N; Longitude: 97.156855 W

Harbor Island Loading Terminal: Latitude: 27.844767 N; Longitude: 97.083002 W

PROJECT DESCRIPTION: The applicant (Axis Midstream Holdings, LLC) proposes to construct a series of facilities and pipelines to store, transport, and load crude oil into marine transport vessels. The project consists of three facilities interconnected by several pipelines and utilities.

The proposed project components are the proposed Midway Tank Farm (Midway Facility) south of the City of Taft, Texas which will be connected to the Aransas Pass Staging Facility (Aransas Facility), west of the City of Aransas Pass, by a pipeline bundle (1 – 2-inch fiber optic, 1 – 6-inch gas supply (last mile) and 2 – 36-inch crude oil pipelines). From the Aransas Facility the project continues easterly with a bundle of pipelines (1 – 2-inch fiber optic, 1 – 6-inch gas supply, 1 – 16-inch intermix return and 2 – 42-

inch crude oil pipelines) across the GIWW and Redfish Bay first by horizontal directional drilling (HDD), then by open-cut trenching. The pipeline bundle terminates at the proposed Harbor Island Loading Terminal (Harbor Facility) located on the west side of the CCSC in Port Aransas.

The proposed project consists of the following components:

- 1) Midway Tank Farm (Latitude: 27.90524 N; Longitude: 97.40482 W): The proposed 52-acre Midway Facility project site will be located south of the intersection of FM 72 and FM 893 in San Patricio County, Texas. The facility will consist of four 500,000-, two 350,000-, five 250,000-, and one 100,000-barrel above-ground storage tanks. The construction of the facility will not impact waters of the US.

There are no ecological or culturally sensitive features involved with this site. The 52-acre site is currently being used. Project viability required approximately 285,000-barrel/day throughput commitments. Current commercial efforts have yielded interconnection agreements and volume commitments from four major crude suppliers exceeding 500,000 barrels/day. Commercial negotiations with crude suppliers are ongoing and these volumes are anticipated to increase. Midway was selected as the bulk storage site due to the growing nexus of crude oil pipeline infrastructure being planned or built in this area for redelivery to the San Patricio County markets.

- 2) Midway to Aransas Facility Pipelines: The Midway to Aransas Facility connection will consist of the installation of approximately 19.5 miles of one 2-inch fiber optic line, one 6-inch gas supply line, and two 36-inch crude oil pipelines. Each of the 36-inch pipelines are sized to move 80,000 barrels of crude per hour to the Aransas Pass facility.

From Midway to FM 1069 (N. Main St.), the pipelines will be installed primarily within agricultural fields. From FM 1069 to Aransas Pass the pipelines will parallel an existing *Boardwalk Pipeline* corridor adjacent to a residential area located on Live Oak Ridge, north of the Town of Ingleside. The 6-inch gas supply pipeline will be installed and co-located with the two 36-inch pipeline from a tie-in point on the Boardwalk pipeline to the Aransas Facility, approximately 1-mile. The following table is a breakdown of each individual temporary impact to waters of the US for this portion of the pipelines:

Table 1. Midway to Aransas Facility Impacts to AR (Temporary)		Location (NAD 83)		Temporary Fill Impacts to AR		
AR Name	Purpose of Impact	Latitude	Longitude	Acres (AC)	Cubic Yards (CY)	Linear Feet (LF)
Waterbody #1	Midway-Aransas Pipelines (bored)	27.916267	-97.376451	0	0	79
Waterbody #2	Midway-Aransas Pipelines (trenched)	27.916316	-97.356593	0.1	423	28
Waterbody #3	Midway-Aransas Pipelines (bored)	27.932788	-97.343417	0	0	13
Waterbody #4	Midway-Aransas Pipelines (bored)	27.944692	-97.329632	0	0	32
Wetland #1A	Midway-Aransas Pipelines (trenched)	27.896890	-97.207379	5.48	26,716	1,768
Waterbody #5	Midway-Aransas Pipelines (trenched)	27.896778	-97.205665	0.3	1,118	74
Wetland #1B	Midway-Aransas Pipelines (trenched)	27.896711	-97.204360	2.04	9,217	597
Wetland #2	Midway-Aransas Pipelines (trenched)	27.891790	-97.191163	0.03	226	15
Wetland #3	Midway-Aransas Pipelines (trenched)	27.891615	-97.190848	0.05	302	20
Waterbody #6	Midway-Aransas Pipelines (trenched)	27.891537	-97.190392	0.03	1,118	74
Waterbody #7	Midway-Aransas Pipelines (trenched)	27.882505	-97.175206	0.14	1,813	120
Wetlands #4	Midway-Aransas Pipelines (trenched)	27.877999	-97.166106	0.06	3,551	235

Wetlands #5	Midway-Aransas Pipelines (trenched)	27.879593	-97.162764	5.71	28,100	1,878
Totals				13.94	72,584	4,933

3) Aransas Pass Staging Facility (Latitude: 27.876527; Longitude: 97.158305 W): The approximately 60-acre Aransas Facility site is located south of the intersection of SH 361 and FM 2725 adjacent to the Gulf Intracoastal Waterway (GIWW). The Aransas Facility is proposed to include five 500,000- and five 350,000- barrel above-ground storage tanks with associated piping, tank manifolds, incoming and outgoing pigging areas, two ship loading pumps, and a recycle pump area. Of the 60-acre site, approximately 16.67 acres are jurisdictional wetlands and the remainder is non-wetlands. The following table details specifics to each impact:

AR Name		Purpose of Impact		Location (NAD83)		Permanent Fill Impacts to AR	
AR Name	Purpose of Impact	Latitude	Longitude	AC	CY	AC	CY
Wetlands #6	Aransas Pass Staging Facility (filled)	27.877338	-97.159430	0.51	4,114		
Wetlands #7	Aransas Pass Staging Facility (filled)	27.879031	-97.158614	0.06	192		
Wetlands #8	Aransas Pass Staging Facility (filled)	27.879130	-97.158512	0.06	192		
Wetlands #9	Aransas Pass Staging Facility (filled)	27.876646	-97.158194	15.8	100,032		
Estuarine Wetlands #1	Aransas Pass Staging Facility (filled)	27.875171	-97.156616	0.24	1,546		
Totals				16.67	106,076		

4) Aransas Facility to Harbor Island Pipelines: The Aransas Facility to Harbor Island segment of the project will consist of the installation of one 2-inch fiber optic line, one 6-inch gas supply line, one 16-inch intermix return line, and two 42-inch crude pipelines approximately 5.5 miles in length. The lines will be installed from Aransas Facility across the GIWW and Redfish Bay and terminate at Harbor Island. The pipelines will be HDD from the mainland, passing below the GIWW and a portion of Redfish Bay. From the HDD point of exit to Harbor Island the lines will be trenched and backfilled within an existing oil and gas canal system and within the open waters of the bay at a minimum depth of cover of 3 feet.

The 42-inch pipelines are designed to allow the loading of two marine vessels at a maximum rate of 80,000 barrels/hour. The 6-inch gas supply line will serve as a fuel source for the vapor destruction equipment. The 16-inch intermix return line will move product from the remix tanks at Harbor Island back to the Aransas Facility. The fiber optic lines will be installed to facilitate operational communications. Field instrumentation for automated valves, tank levels, etc., will be monitored and operated from within a centralized control room. The following table details impacts to specific aquatic resources:

AR Name		Purpose of Impact		Location (NAD83)			Temporary Fill Impacts			Permanent Dredge Impacts		Temporary Dredge Impacts	
AR Name	Purpose of Impact	Latitude	Longitude	AC	CY	LF	CY	LF	CY	LF			
GIWW	Aransas-Harbor Island Pipelines (HDD)	27.873312	-97.150999	0	0	0	0	0	0	0			
Seagrass Bed #1	Aransas-Harbor Island Pipelines (trenched)	27.868071	-97.143216	1.3	35,420	2,344	0	0	0	0			
Seagrass Bed #2	Aransas-Harbor Island Pipelines (trenched)	27.867386	-97.142743	0.01	2,976	197	0	0	0	0			
Seagrass Bed #3	Aransas-Harbor Island Pipelines (trenched)	27.865378	-97.139582	0.08	17,347	1,148	0	0	0	0			
Seagrass Bed #4	Aransas-Harbor Island Pipelines (trenched)	27.864579	-97.137697	0.09	6,392	423	0	0	0	0			
Seagrass Bed #5	Aransas-Harbor Island Pipelines (trenched)	27.863445	-97.136502	0.35	12,512	828	0	0	0	0			

Seagrass Bed #6	Aransas-Harbor Island Pipelines (trenched)	27.852799	-97.119525	0	0	755	2.3	11,408	0	0
Seagrass Bed #7	Aransas-Harbor Island Pipelines (trenched)	27.842286	-97.112464	3.68	35,360	2,340	0	0	3.68	35,360
Smooth Cord Grass #1	Aransas-Harbor Island Pipelines (trenched)	27.840493	-97.110282	0.001	302	20	0	0	0.001	302
Tidal Flat #1	Aransas-Harbor Island Pipelines (trenched)	27.840854	-97.107553	5.65	30,222	2,000	0	0	5.56	30,222
Smooth Cord Grass #2	Aransas-Harbor Island Pipelines (trenched)	27.841031	-97.105559	0.001	120	8	0	0	0.001	120
Black Mangrove #1	Aransas-Harbor Island Pipelines (trenched)	27.840842	-97.105368	0.03	1,375	91	0	0	0.03	1,375
Black Mangrove #2	Aransas-Harbor Island Pipelines (trenched)	27.840917	-97.104683	0.34	3,173	210	0	0	0.34	3,173
Tidal Flat #2	Aransas-Harbor Island Pipelines (trenched)	27.840927	-97.104399	0.1	1,722	114	0	0	0.1	1,722
Black Mangrove #3	Aransas-Harbor Island Pipelines (trenched)	27.841294	-97.101983	0.04	453	30	0	0	0.04	453
Tidal Flat #3	Aransas-Harbor Island Pipelines (trenched)	27.841481	-97.100257	4.9	25,688	1,700	0	0	4.9	25,688
Estuarine Wetlands #2	Aransas-Harbor Island Pipelines (trenched)	27.841442	-97.099068	0.11	513	34	0	0	0.11	513
Totals				16.682	17,3575	12,242	2.3	11,408	14.762	98,928

5) Harbor Island Loading Terminal (Latitude: 27.844767 N; Longitude: 97.083002 W): Harbor Island is located 0.5 miles west of the intersection of Hwy 361 and the Corpus Christi Navigational Channel approximately 1.5-miles northwest of the Town of Port Aransas. An approximately 20-acre site will contain the necessary infrastructure behind the berthing facilities (i.e., piping, loading equipment, 2-80K bbl above ground remix tanks, etc.). A bulkhead will be constructed on the northwest and southwest sections of the tanker slip. The berthing area will contain the approach trestle, ship dock platform and mooring dolphins. Ship berths will be approximately 730-ft. in length and 1164-ft. in width. Berths are sized to accommodate two vessels. The berthing area and access from the Corpus Christi Channel will be dredged to a depth of ± 54-ft. MLLW to match the ship channel project depth.

AR Name		Location (NAD83)		Permanent Fill Impacts			Permanent Dredge Impacts	
AR Name	Purpose of Impact	Latitude	Longitude	AC	CY	LF	CY	LF
Estuarine Wetlands #3	Aransas Facility Emergency Road (filled)	27.872150	-97.162515	0.09	540	208	0	0
Waterbody #8	Aransas Facility Emergency Road (filled)	27.843548	-97.081242	0.03	163	35	0.03	102
Estuarine Wetlands #4	Aransas Facility Emergency Road (filled)	27.871825	-97.162704	0.01	195	20	0	0
Waterbody - Dock	Harbor Island Loading Terminal (dredged)	27.843548	-97.081242	0	0	0	70	2,785,450
Totals				0.13	898	263	70.03	2,785,552

The applicant is proposing a conceptual mitigation plan consisting of construction of approximately 14,500-ft of shoreline stabilization on Harbor Island adjacent to the Corpus Christi Ship Channel (CCSC). The project is designed to stop the loss of seagrass habitat and to restore lost shoreline along the southern end of Harbor Island. Based on aerial photographic interpretation, the area has experienced the loss of approximately 36.8-acres of seagrass habitat and 76.3-acres of shoreline along the CCSC. Material from the excavation of the Harbor Island Terminal berth will be used as fill for the earthen levee. Rock or rip-rap will be installed channelward of the levee to reduce wave impacts.

The applicant's plans are enclosed in 42 sheets.

FOR STAFF ARCHAEOLOGIST: Mr. Jerry Androy

Date

Reviewed:

1. Known Properties: _____ in the permit area
_____ in the immediate vicinity/similar topographic.

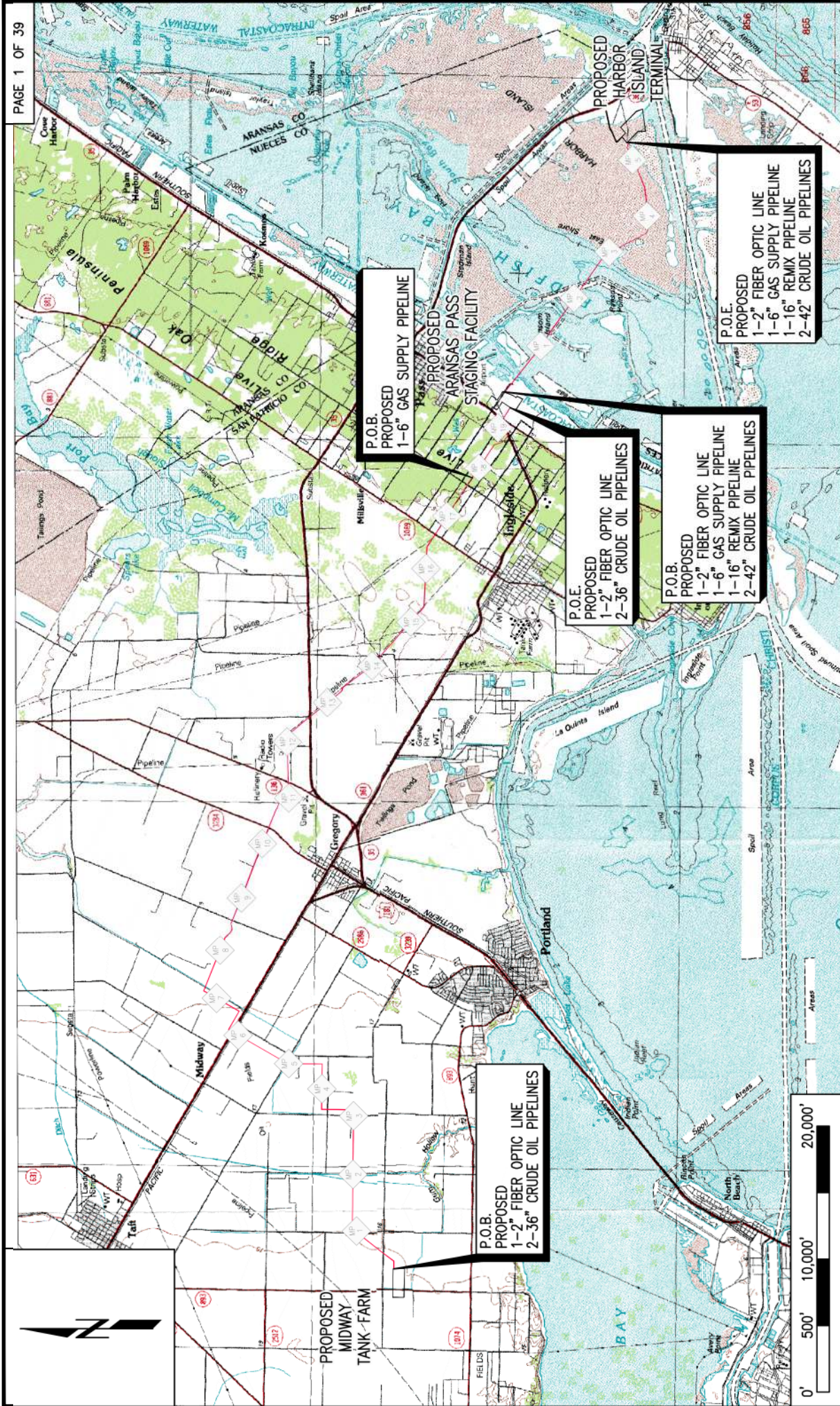
2. Recommended Action: No Action Survey/Assessment Avoidance

3. SHPO Coordination: YES NO The project has no potential to cause effects and coordination with the SHPO is not required. *(Remove SHPO from the Interagency Coordination Notice when this is checked).*

4. Public Notice Statement: A B C D E F G H (See Notes)

STAFF ARCHAEOLOGISTS NOTES:

USACE COMMENTS OR CONCERNS:



VICINITY MAP
 PLS & Facility.: Midway T.F. to Harbor Island

Date: 12/27/2018
 Revised: 3/3/2019

NOTE: THE CONTENT OF THIS DRAWING IS DESIGNED SPECIFICALLY FOR THE PURPOSE OF SECURING FEDERAL, STATE AND LOCAL ENVIRONMENTAL/ REGULATORY AUTHORIZATIONS ONLY.

AXIS MIDSTREAM HOLDINGS, LLC
 Proposed Pipelines & Facilities
 MIDWAY to HARBOR ISLAND PROJECT
 SAN PATRICIO & NUECES COUNTIES, TEXAS
 Prepared BY: Project Consulting Services, Inc.

AXIS MIDSTREAM

PROJECT CONSULTING SERVICES, INC.
 www.projectconsulting.com

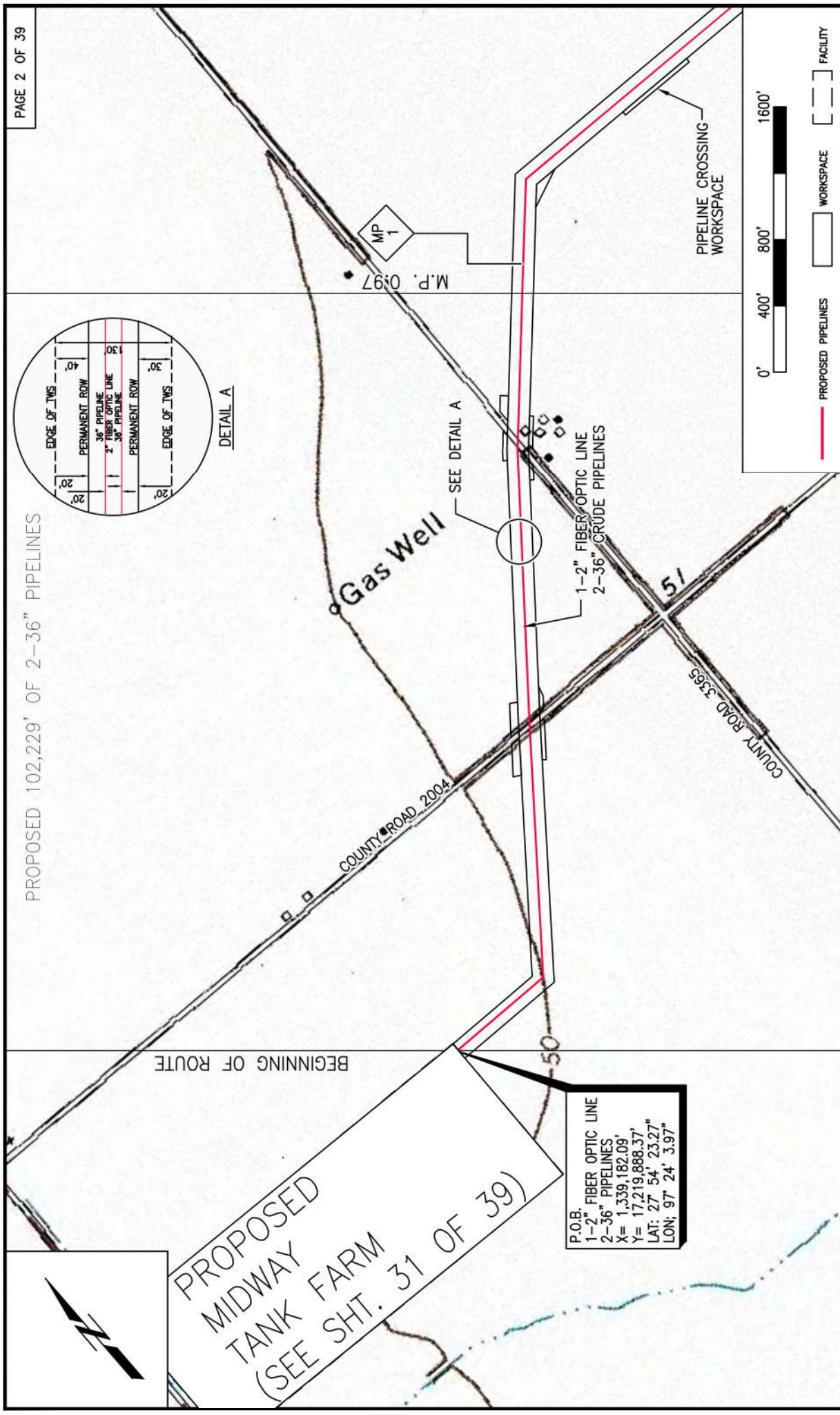
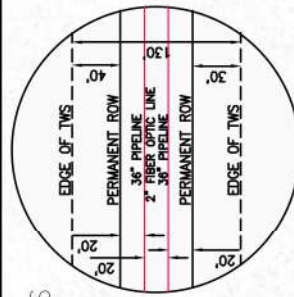
PREPARED BY: LRW
CHECKED BY:
APPROVED BY:
PROJECT NO.: 19012
REISSUE DATE: 3/25/19

NEW ORLEANS, LA ♦ HOUSTON, TX ♦ MOBILE, AL
 BIRMINGHAM, AL ♦ ATLANTA, GA ♦ LAFAYETTE, LA
 MANDEVILLE, LA ♦ SAN ANTONIO, TX
 CHICAGO, IL ♦ NORTH HAMPTON, NH

SWG-
2018-
00789

Sheet
1/42

PROPOSED 102,229' OF 2-36" PIPELINES



Gas Well

SEE DETAIL A

1-2" FIBER/OPTIC LINE
2-36" CRUDE PIPELINES

PIPELINE CROSSING
WORKSPACE



PLAN VIEW

PLS: Midway T.F. to Aransas

AXIS MIDSTREAM HOLDINGS, LLC

Proposed Pipelines & Facilities

MIDWAY to HARBOR ISLAND PROJECT

SAN PATRICIO & NUECES COUNTIES, TEXAS

Prepared BY: Project Consulting Services, Inc.



AXIS MIDSTREAM

Date: 12/27/2018
Revised: 3/3/2019

PROJECT CONSULTING SERVICES, INC.
www.projectconsulting.com

PREPARED BY:	LRW
CHECKED BY:	
APPROVED BY:	
PROJECT NO.:	19012
ISSUE DATE:	3/25/19

NEW ORLEANS, LA ♦ HOUSTON, TX ♦ MOBILE, AL
 BIRMINGHAM, AL ♦ ATLANTA, GA ♦ LAFAYETTE, LA
 MANDEVILLE, LA ♦ SAN ANTONIO, TX
 CHICAGO, IL ♦ NORTH HAMPTON, NH

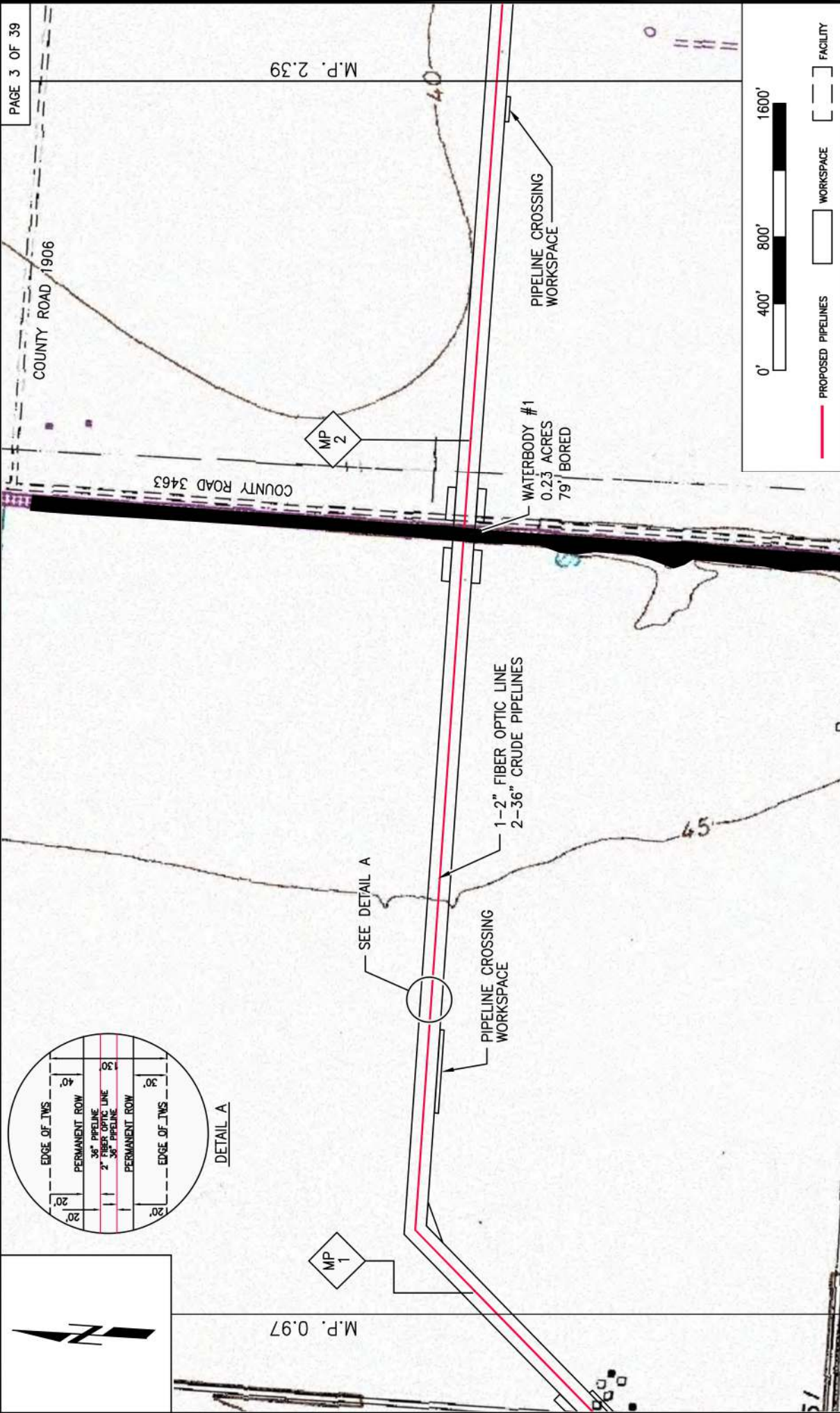


BEGINNING OF ROUTE

PROPOSED
MIDWAY FARM
TANK FARM
(SEE SHT. 31 OF 39)

P.O.B.
 1-2" FIBER OPTIC LINE
 2-36" PIPELINES
 X= 1,339,182.09'
 Y= 17,219,888.37'
 LAT: 27 54' 23.27"
 LON: 97 24' 3.97"

NOTE: THE CONTENT OF THIS DRAWING IS DESIGNED SPECIFICALLY FOR THE PURPOSE OF SECURING FEDERAL, STATE AND LOCAL ENVIRONMENTAL/ REGULATORY AUTHORIZATIONS ONLY.



— PROPOSED PIPELINES
 WORKSPACE
 FACILITY

PLAN VIEW

PLS: Midway T.F. to Aransas

Date: 12/27/2018
Revised: 3/3/2019

NOTE: THE CONTENT OF THIS DRAWING IS DESIGNED SPECIFICALLY FOR THE PURPOSE OF SECURING FEDERAL, STATE AND LOCAL ENVIRONMENTAL/ REGULATORY AUTHORIZATIONS ONLY.

AXIS MIDSTREAM HOLDINGS, LLC
 Proposed Pipelines & Facilities
MIDWAY to HARBOR ISLAND PROJECT
 SAN PATRICIO & NUECES COUNTIES, TEXAS
 Prepared BY: Project Consulting Services, Inc.

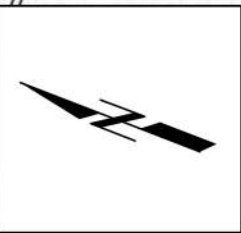
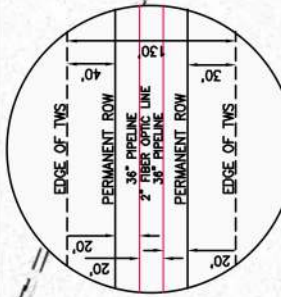
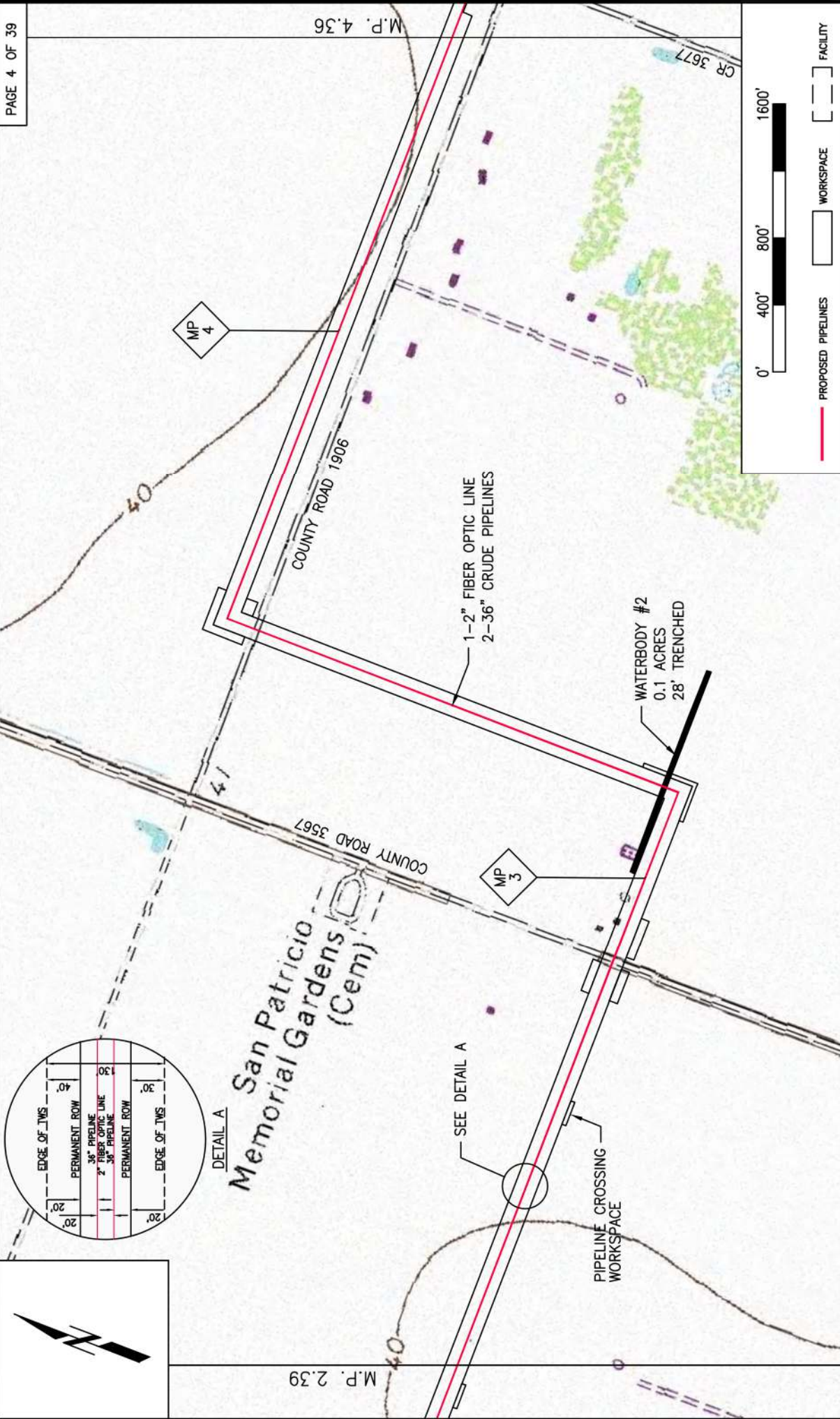

AXIS MIDSTREAM

PROJECT CONSULTING SERVICES, INC.
 www.projectconsulting.com

PREPARED BY:	LRW
CHECKED BY:	
APPROVED BY:	
PROJECT NO.:	19012
ISSUE DATE:	3/25/19

NEW ORLEANS, LA ♦ HOUSTON, TX ♦ MOBILE, AL
 BIRMINGHAM, AL ♦ ATLANTA, GA ♦ LAFAYETTE, LA
 MANDEVILLE, LA ♦ SAN ANTONIO, TX
 CHICAGO, IL ♦ NORTH HAMPTON, NH





PLAN VIEW

PLS: Midway T.F. to Aransas

Date: 12/27/2018
Revised: 3/3/2019

NOTE: THE CONTENT OF THIS DRAWING IS DESIGNED SPECIFICALLY FOR THE PURPOSE OF SECURING FEDERAL, STATE AND LOCAL ENVIRONMENTAL/ REGULATORY AUTHORIZATIONS ONLY.

AXIS MIDSTREAM HOLDINGS, LLC
 Proposed Pipelines & Facilities
MIDWAY to HARBOR ISLAND PROJECT
 SAN PATRICIO & NUECES COUNTIES, TEXAS
 Prepared BY: Project Consulting Services, Inc.

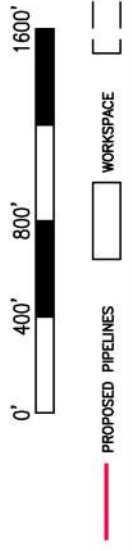
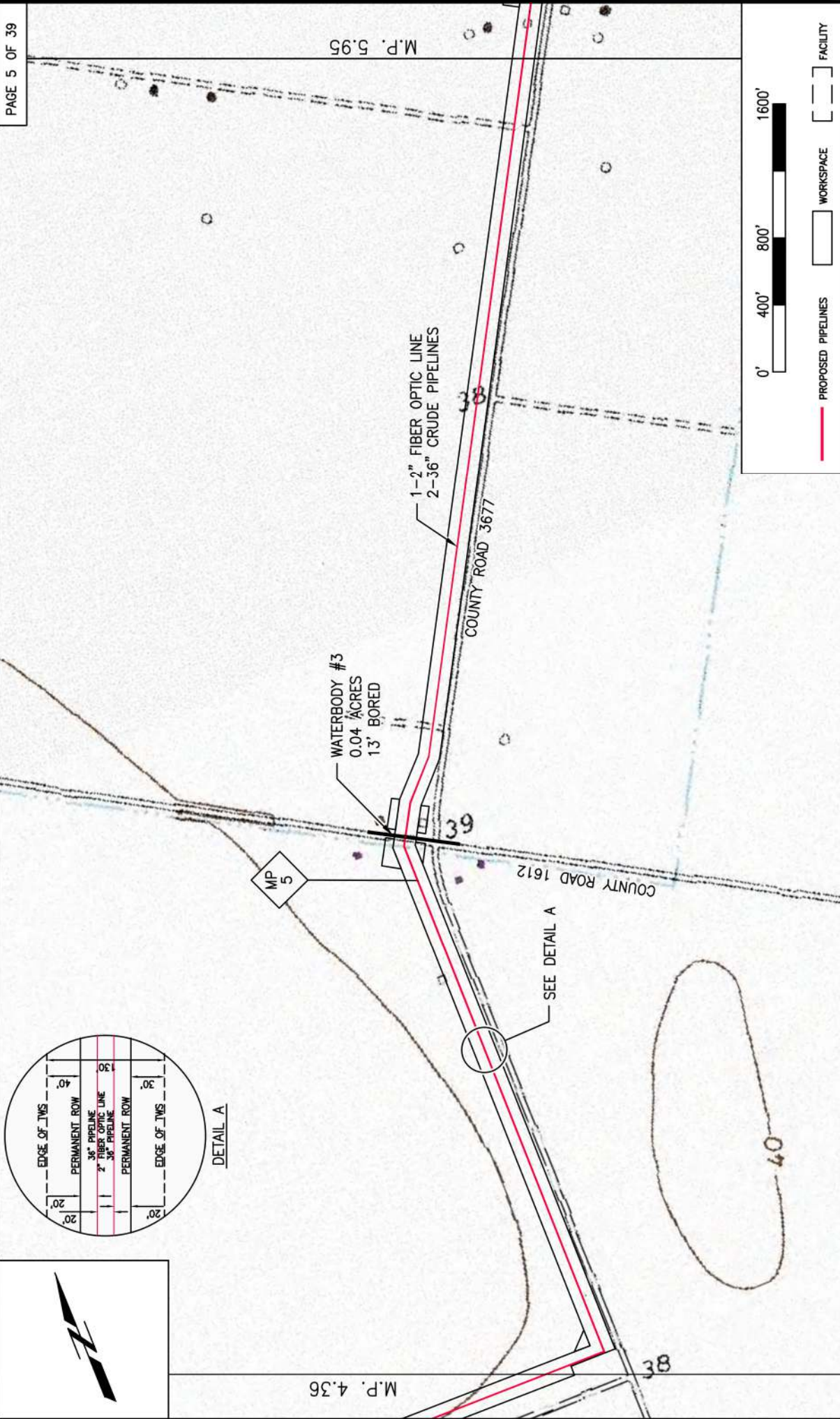
AXIS MIDSTREAM

PROJECT CONSULTING SERVICES, INC.
www.projectconsulting.com

PREPARED BY:	LRW
CHECKED BY:	
APPROVED BY:	
PROJECT NO.:	19012
ISSUE DATE:	3/25/19

NEW ORLEANS, LA ♦ HOUSTON, TX ♦ MOBILE, AL
 BIRMINGHAM, AL ♦ ATLANTA, GA ♦ LAFAYETTE, LA
 MANDEVILLE, LA ♦ SAN ANTONIO, TX
 CHICAGO, IL ♦ NORTH HAMPTON, NH

SWG-2018-00789



PLAN VIEW

PLS: Midway T.F. to Arkansas

Date: 12/27/2018
Revised: 3/3/2019

NOTE: THE CONTENT OF THIS DRAWING IS DESIGNED SPECIFICALLY FOR THE PURPOSE OF SECURING FEDERAL, STATE AND LOCAL ENVIRONMENTAL/ REGULATORY AUTHORIZATIONS ONLY.

AXIS MIDSTREAM HOLDINGS, LLC
Proposed Pipelines & Facilities
MIDWAY to HARBOR ISLAND PROJECT
SAN PATRICIO & NUECES COUNTIES, TEXAS
Prepared BY: Project Consulting Services, Inc.

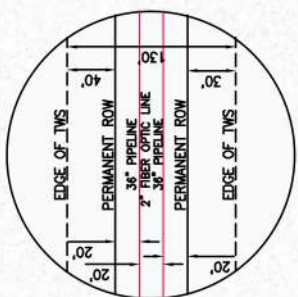
AXIS MIDSTREAM

PROJECT CONSULTING SERVICES, INC.
www.projectconsulting.com

PREPARED BY:	LRW
CHECKED BY:	
APPROVED BY:	
PROJECT NO.:	19012
REISSUE DATE:	3/25/19

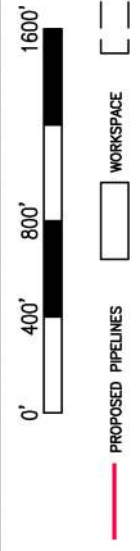
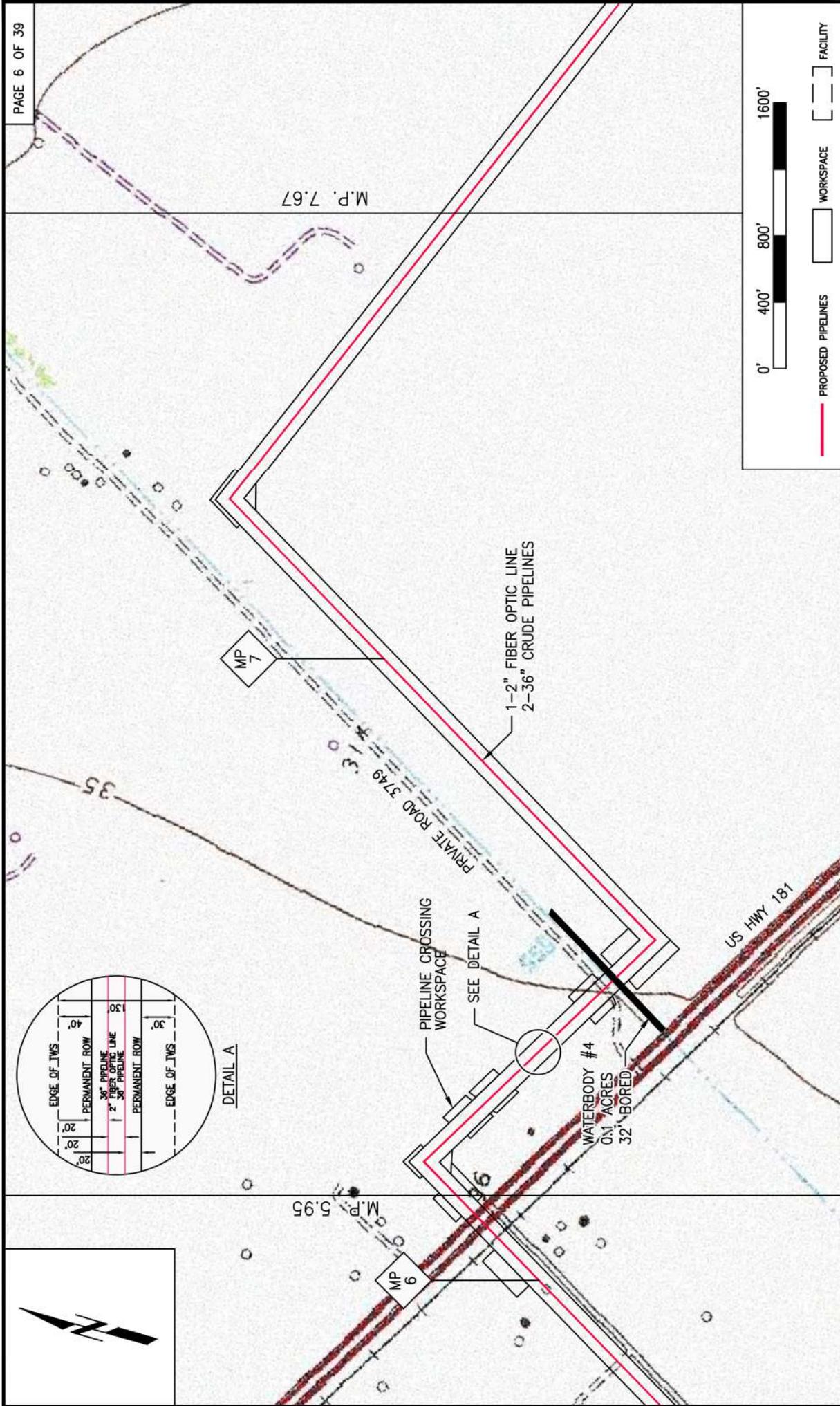
NEW ORLEANS, LA ♦ HOUSTON, TX ♦ MOBILE, AL
BIRMINGHAM, AL ♦ ATLANTA, GA ♦ LAFAYETTE, LA
MANDEVILLE, LA ♦ SAN ANTONIO, TX
CHICAGO, IL ♦ NORTH HAMPTON, NH

SWG-
2018-
00789



M.P. 4.36

M.P. 5.95



PLAN VIEW

PLs: Midway T.F. to Aransas

Date: 12/27/2018
Revised: 3/3/2019

NOTE: THE CONTENT OF THIS DRAWING IS DESIGNED SPECIFICALLY FOR THE PURPOSE OF SECURING FEDERAL, STATE AND LOCAL ENVIRONMENTAL/ REGULATORY AUTHORIZATIONS ONLY.

AXIS MIDSTREAM HOLDINGS, LLC
 Proposed Pipelines & Facilities
 MIDWAY TO HARBOR ISLAND PROJECT

Sheet 6/42

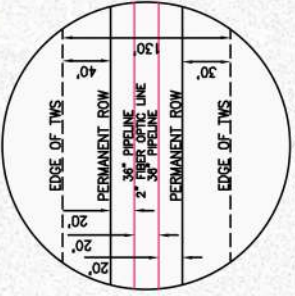
SAN PATRICIO & NUECES COUNTIES, TEXAS
 Prepared BY: Project Consulting Services, Inc.

AXIS MIDSTREAM

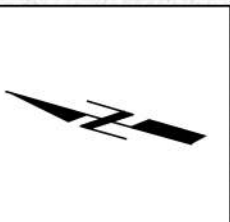
PROJECT CONSULTING SERVICES, INC.
www.projectconsulting.com

PREPARED BY:	LRW
CHECKED BY:	
APPROVED BY:	
PROJECT NO.:	19012
REISSUE DATE:	3/25/19

NEW ORLEANS, LA ♦ HOUSTON, TX ♦ MOBILE, AL
 BIRMINGHAM, AL ♦ ATLANTA, GA ♦ LAFAYETTE, LA
 MANDEVILLE, LA ♦ SAN ANTONIO, TX
 CHICAGO, IL ♦ NORTH HAMPTON, NH



DETAIL A



M.P. 7.67

MP 7

M.P. 5.95

MP 6

PIPELINE CROSSING
WORKSPACE
SEE DETAIL A

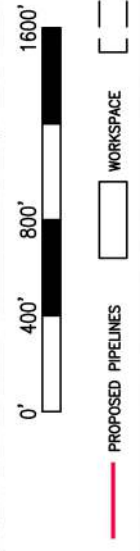
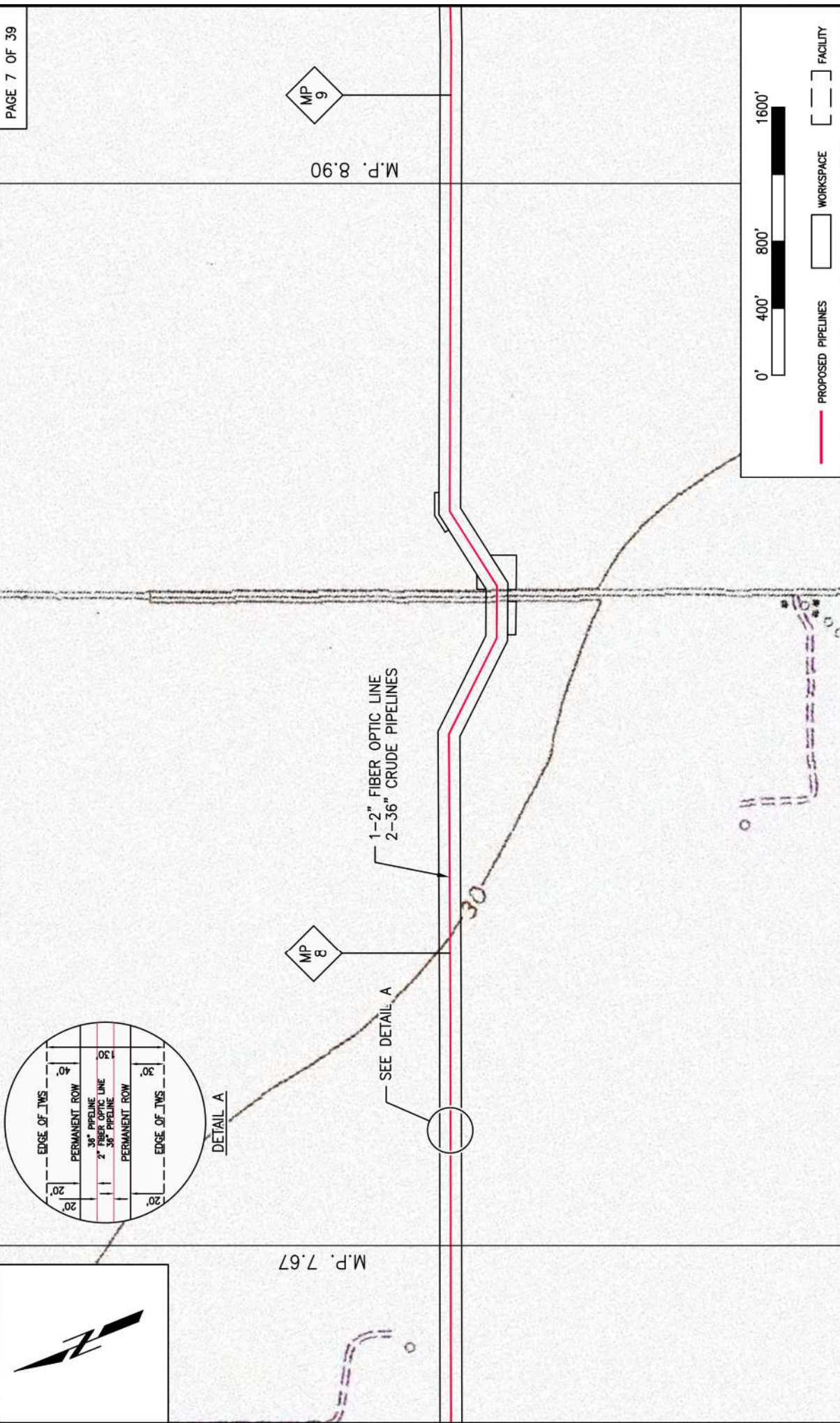
1-2" FIBER OPTIC LINE
2-36" CRUDE PIPELINES

WATERBODY #4
0.1 ACRES
32' BORED

US Hwy 181

PRIVATE ROAD 3749

35



PLAN VIEW

PLs: Midway T.F. to Aransas

Date: 12/27/2018
Revised: 3/3/2019

NOTE: THE CONTENT OF THIS DRAWING IS DESIGNED SPECIFICALLY FOR THE PURPOSE OF SECURING FEDERAL, STATE AND LOCAL ENVIRONMENTAL/ REGULATORY AUTHORIZATIONS ONLY.

AXIS MIDSTREAM HOLDINGS, LLC
 Proposed Pipelines & Facilities
 MIDWAY to HARBOR ISLAND PROJECT
 SAN PATRICIO & NUECES COUNTIES, TEXAS
 Prepared BY: Project Consulting Services, Inc.

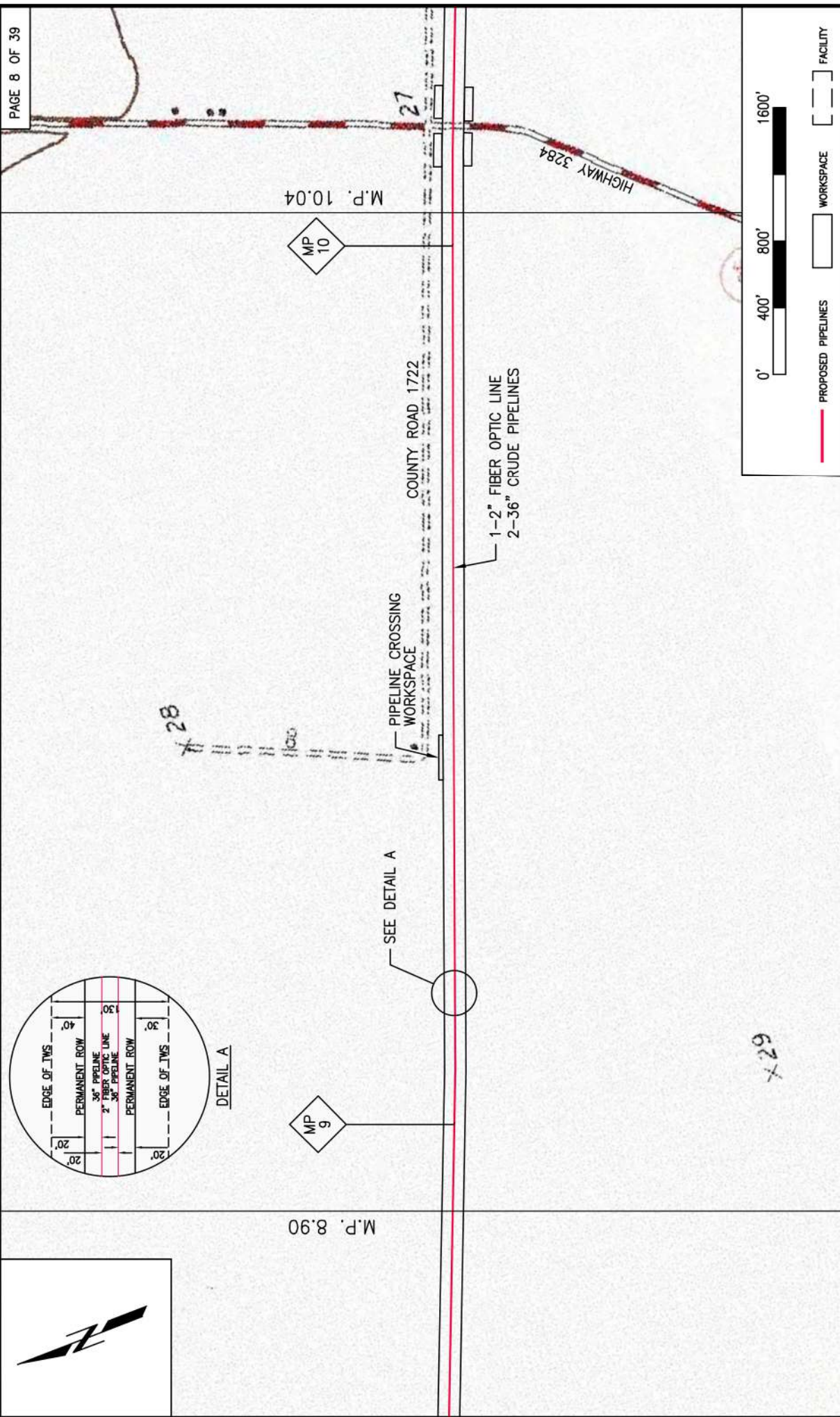
AXIS MIDSTREAM

PROJECT CONSULTING SERVICES, INC.
 www.projectconsulting.com

PREPARED BY:	LRW
CHECKED BY:	
APPROVED BY:	
PROJECT NO.:	19012
ISSUE DATE:	3/25/19

NEW ORLEANS, LA ♦ HOUSTON, TX ♦ MOBILE, AL
 BIRMINGHAM, AL ♦ ATLANTA, GA ♦ LAFAYETTE, LA
 MANDEVILLE, LA ♦ SAN ANTONIO, TX
 CHICAGO, IL ♦ NORTH HAMPTON, NH

SWG-
2018-
00789



PLAN VIEW

PLs: Midway T.F. to Aransas

Date: 12/27/2018
Revised: 3/3/2019

NOTE: THE CONTENT OF THIS DRAWING IS DESIGNED SPECIFICALLY FOR THE PURPOSE OF SECURING FEDERAL, STATE AND LOCAL ENVIRONMENTAL/ REGULATORY AUTHORIZATIONS ONLY.

AXIS MIDSTREAM HOLDINGS, LLC
 Proposed Pipelines & Facilities
MIDWAY to HARBOR ISLAND PROJECT
 SAN PATRICIO & NUECES COUNTIES, TEXAS
 Prepared BY: Project Consulting Services, Inc.

AXIS MIDSTREAM



PROJECT CONSULTING SERVICES, INC.
www.projectconsulting.com

PREPARED BY:	LRW
CHECKED BY:	
APPROVED BY:	
PROJECT NO.:	19012
ISSUE DATE:	3/25/19

NEW ORLEANS, LA ♦ HOUSTON, TX ♦ MOBILE, AL
 BIRMINGHAM, AL ♦ ATLANTA, GA ♦ LAFAYETTE, LA
 MANDEVILLE, LA ♦ SAN ANTONIO, TX
 CHICAGO, IL ♦ NORTH HAMPTON, NH





PLAN VIEW

PLS: Midway T.F. to Arkansas

Date: 12/27/2018
Revised: 3/3/2019

NOTE: THE CONTENT OF THIS DRAWING IS DESIGNED SPECIFICALLY FOR THE PURPOSE OF SECURING FEDERAL, STATE AND LOCAL ENVIRONMENTAL/ REGULATORY AUTHORIZATIONS ONLY.

AXIS MIDSTREAM HOLDINGS, LLC
 Proposed Pipelines & Facilities
MIDWAY to HARBOR ISLAND PROJECT
 SAN PATRICIO & NUECES COUNTIES, TEXAS
 Prepared BY: Project Consulting Services, Inc.

AXIS MIDSTREAM

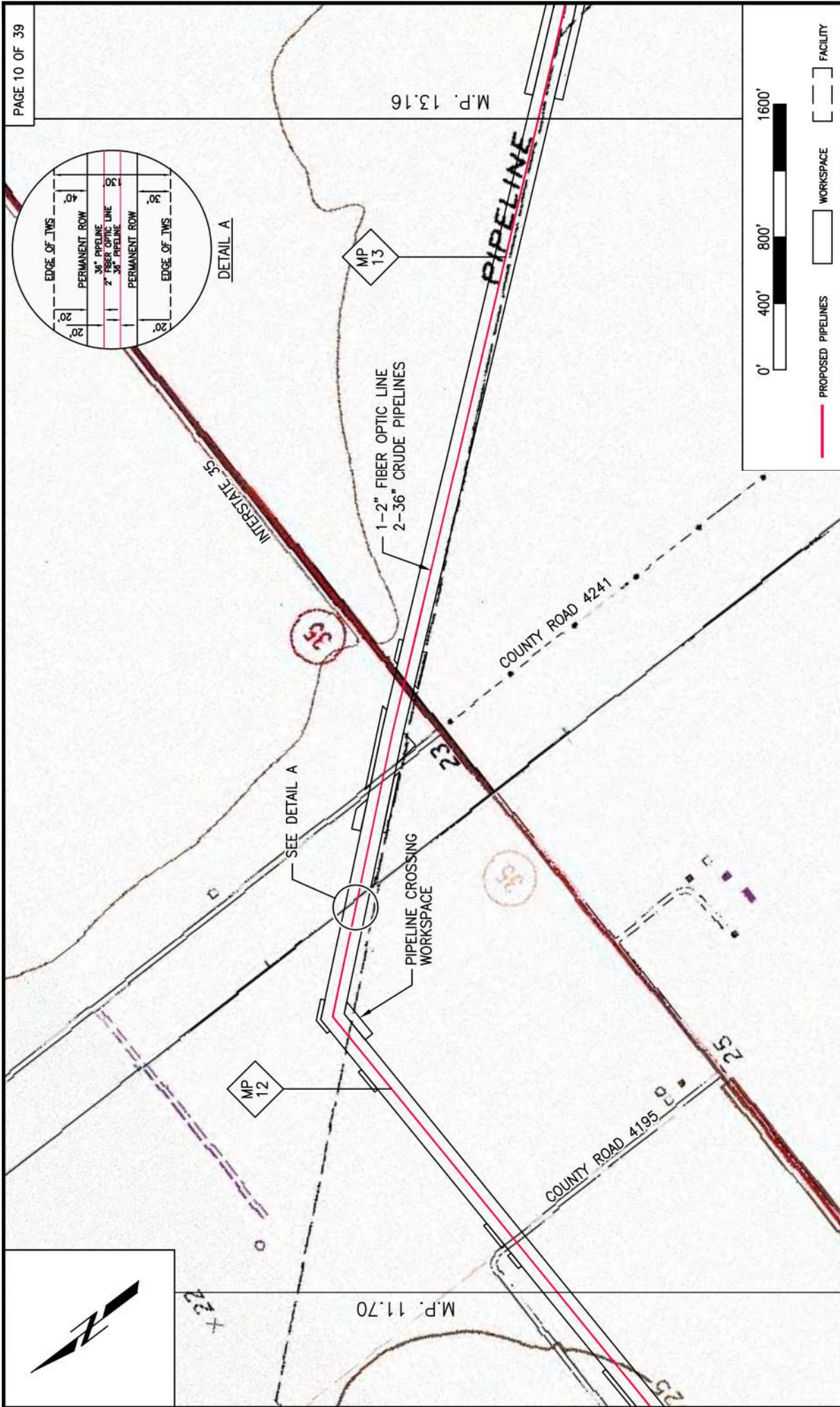
PROJECT CONSULTING SERVICES, INC.
 www.projectconsulting.com

PREPARED BY:	LRW
CHECKED BY:	
APPROVED BY:	
PROJECT NO.:	19012
ISSUE DATE:	3/25/19

NEW ORLEANS, LA ♦ HOUSTON, TX ♦ MOBILE, AL
 BIRMINGHAM, AL ♦ ATLANTA, GA ♦ LAFAYETTE, LA
 MANDEVILLE, LA ♦ SAN ANTONIO, TX
 CHICAGO, IL ♦ NORTH HAMPTON, NH

SWG-
2018-
00789

Sheet
9/42



PLAN VIEW

PLS: Midway T.F. to Arkansas



— PROPOSED PIPELINES
 WORKSPACE
 FACILITY

Date: 12/27/2018
Revised: 3/3/2019

NOTE: THE CONTENT OF THIS DRAWING IS DESIGNED SPECIFICALLY FOR THE PURPOSE OF SECURING FEDERAL, STATE AND LOCAL ENVIRONMENTAL/ REGULATORY AUTHORIZATIONS ONLY.

AXIS MIDSTREAM HOLDINGS, LLC
 Proposed Pipelines & Facilities
MIDWAY to HARBOR ISLAND PROJECT
 SAN PATRICIO & NUECES COUNTIES, TEXAS
 Prepared BY: Project Consulting Services, Inc.

AXIS MIDSTREAM

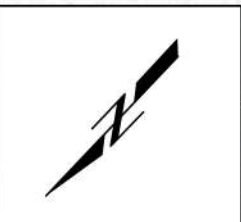
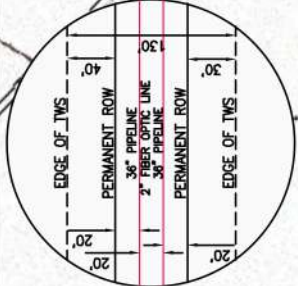
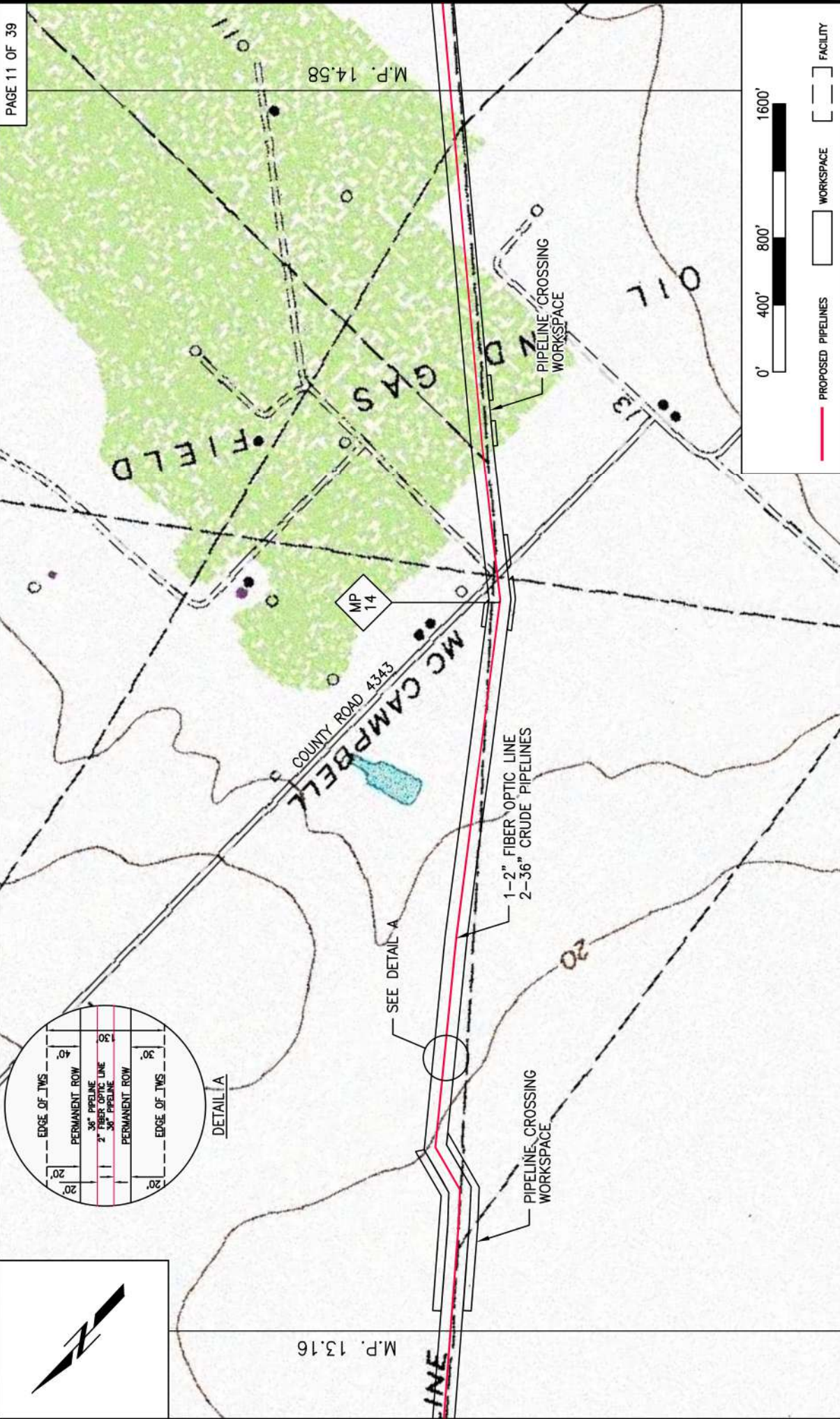
PROJECT CONSULTING SERVICES, INC.
 www.projectconsulting.com

PREPARED BY: LRW
CHECKED BY:
APPROVED BY:
PROJECT NO.: 19012
REISSUE DATE: 3/25/19

NEW ORLEANS, LA ♦ HOUSTON, TX ♦ MOBILE, AL
 BIRMINGHAM, AL ♦ ATLANTA, GA ♦ LAFAYETTE, LA
 MANDEVILLE, LA ♦ SAN ANTONIO, TX
 CHICAGO, IL ♦ NORTH HAMPTON, NH

SWG-
2018-
00789

Sheet
10/42



M.P. 13.16

M.P. 14.58

NOTE: THE CONTENT OF THIS DRAWING IS DESIGNED SPECIFICALLY FOR THE PURPOSE OF SECURING FEDERAL, STATE AND LOCAL ENVIRONMENTAL/ REGULATORY AUTHORIZATIONS ONLY.

Date: 12/27/2018
Revised: 3/3/2019

PLAN VIEW
PLS: Midway T.F. to Aransas



PROJECT CONSULTING SERVICES, INC.
www.projectconsulting.com

PREPARED BY: LRW
CHECKED BY:
APPROVED BY:
PROJECT NO.: 19012
REISSUE DATE: 3/25/19

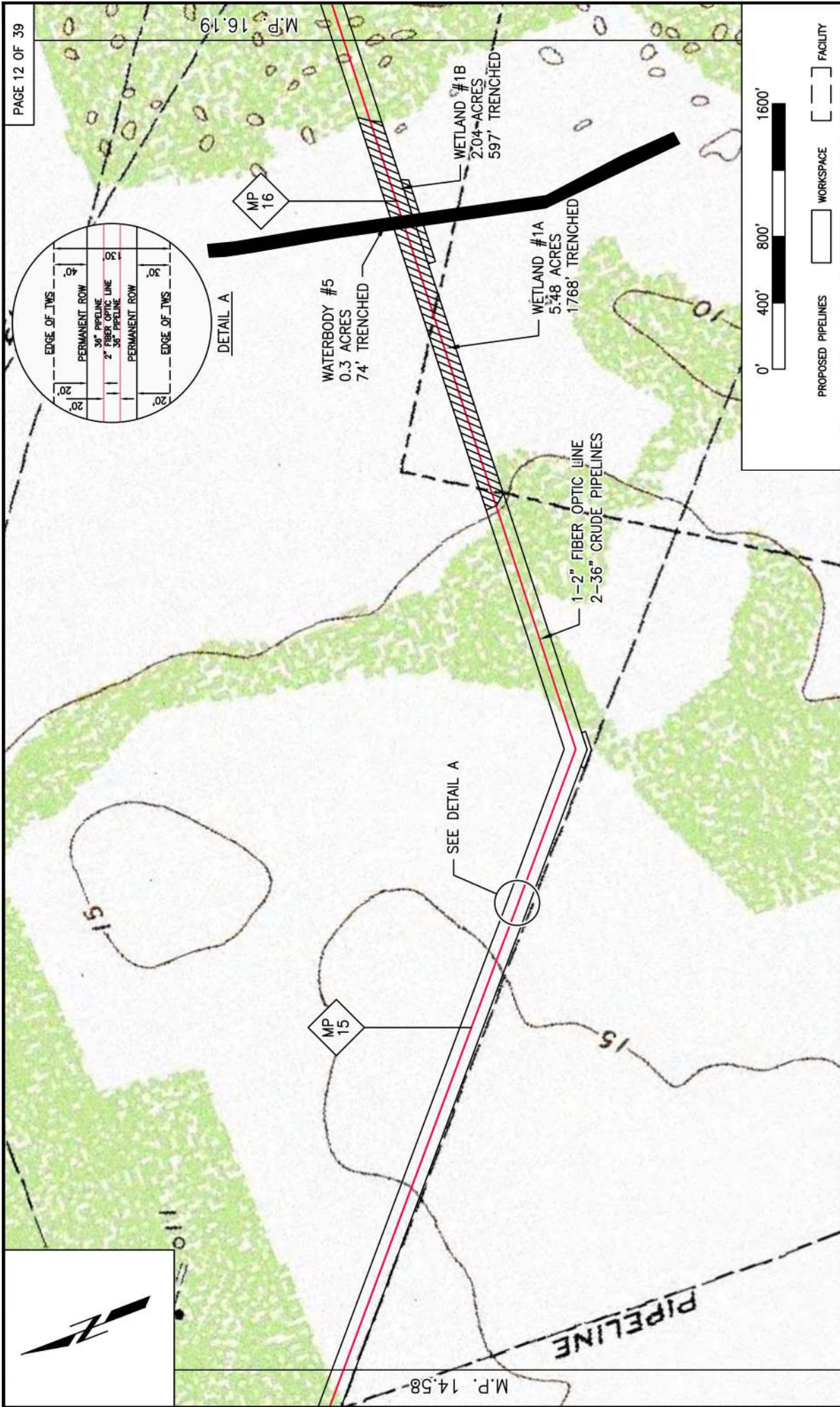
NEW ORLEANS, LA ♦ HOUSTON, TX ♦ MOBILE, AL
BIRMINGHAM, AL ♦ ATLANTA, GA ♦ LAFAYETTE, LA
MANDEVILLE, LA ♦ SAN ANTONIO, TX
CHICAGO, IL ♦ NORTH HAMPTON, NH



AXIS MIDSTREAM

AXIS MIDSTREAM HOLDINGS, LLC
Proposed Pipelines & Facilities
MIDWAY to HARBOR ISLAND PROJECT
SAN PATRICIO & NUECES COUNTIES, TEXAS
Prepared BY: Project Consulting Services, Inc.

Sheet 11/42



PLAN VIEW

Pls: Midway T.F. to Aransas

Date: 12/27/2018
 Revised: 3/3/2019, 6/13/2019

NOTE: THE CONTENT OF THIS DRAWING IS DESIGNED SPECIFICALLY FOR THE PURPOSE OF SECURING FEDERAL, STATE AND LOCAL ENVIRONMENTAL/ REGULATORY AUTHORIZATIONS ONLY.

AXIS MIDSTREAM HOLDINGS, LLC
 Proposed Pipelines & Facilities
 MIDWAY to HARBOR ISLAND PROJECT

Sheet 12/42

SAN PATRICIO & NUECES COUNTIES, TEXAS
 Prepared BY: Project Consulting Services, Inc.

82

AXIS MIDSTREAM

PROJECT CONSULTING SERVICES, INC.
 www.projectconsulting.com

PREPARED BY: LRW
CHECKED BY:
APPROVED BY:
PROJECT NO.: 19012
REISSUE DATE: 3/25/19

NEW ORLEANS, LA ♦ HOUSTON, TX ♦ MOBILE, AL
 BIRMINGHAM, AL ♦ ATLANTA, GA ♦ LAFAYETTE, LA
 MANDEVILLE, LA ♦ SAN ANTONIO, TX
 CHICAGO, IL ♦ NORTH HAMPTON, NH

SWG-2018-00789



PLAN VIEW

Pls: Midway T.F. to Aransas

PROPOSED PIPELINES WORKSPACE FACILITY

Date: 12/27/2018
Revised: 3/3/2019, 6/13/2019

NOTE: THE CONTENT OF THIS DRAWING IS DESIGNED SPECIFICALLY FOR THE PURPOSE OF SECURING FEDERAL, STATE AND LOCAL ENVIRONMENTAL/ REGULATORY AUTHORIZATIONS ONLY.

AXIS MIDSTREAM HOLDINGS, LLC
Proposed Pipelines & Facilities
MIDWAY to HARBOR ISLAND PROJECT
SAN PATRICIO & NUECES COUNTIES, TEXAS
Prepared BY: Project Consulting Services, Inc.

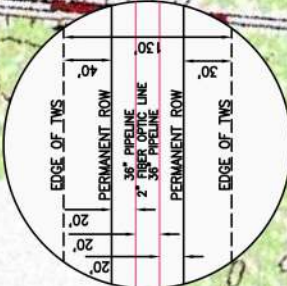
AXIS MIDSTREAM

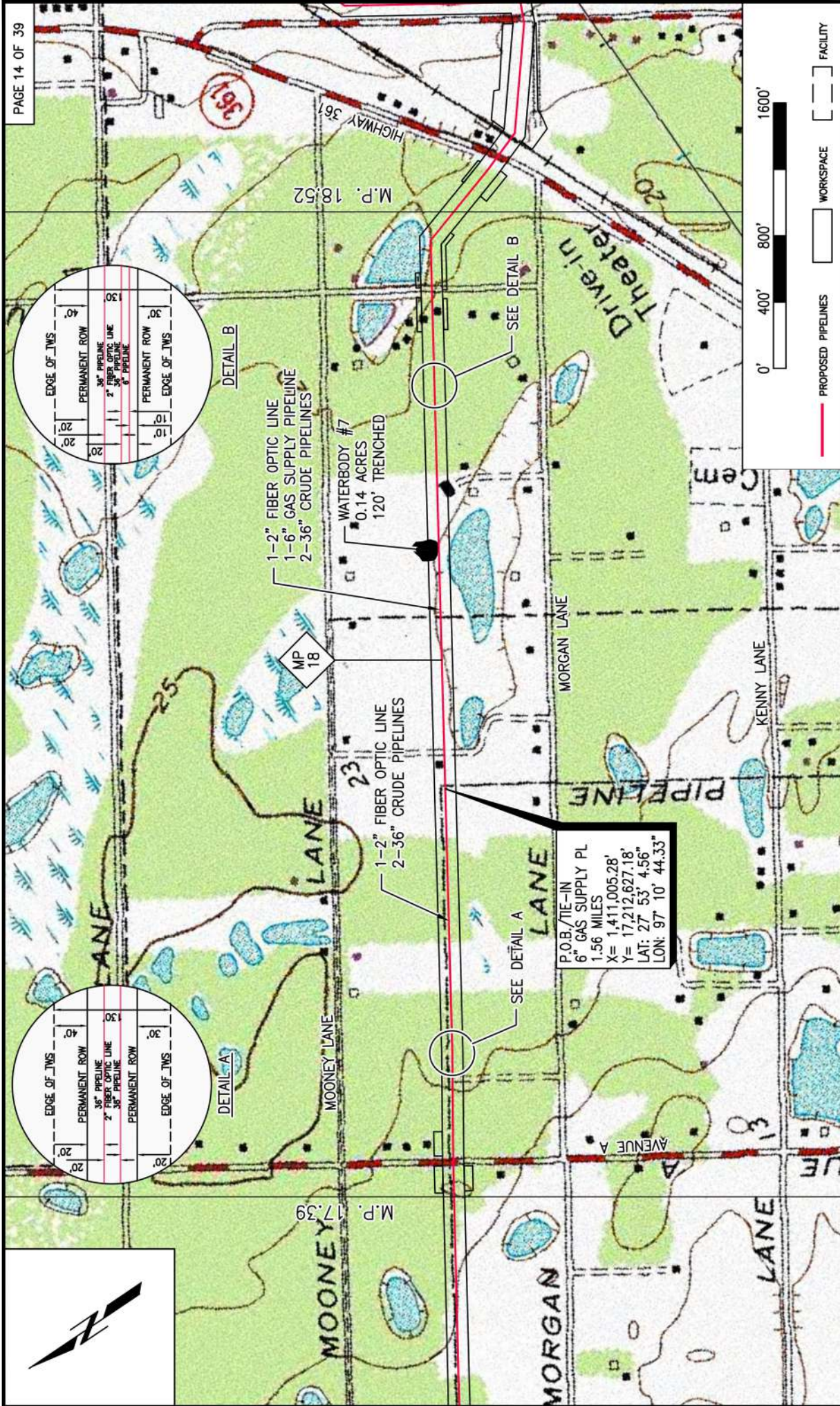
PROJECT CONSULTING SERVICES, INC.
www.projectconsulting.com

PREPARED BY:	LRW
CHECKED BY:	
APPROVED BY:	
PROJECT NO.:	19012
REISSUE DATE:	3/25/19

NEW ORLEANS, LA ♦ HOUSTON, TX ♦ MOBILE, AL
BIRMINGHAM, AL ♦ ATLANTA, GA ♦ LAFAYETTE, LA
MANDEVILLE, LA ♦ SAN ANTONIO, TX
CHICAGO, IL ♦ NORTH HAMPTON, NH

SWG-
2018-
00789





PLAN VIEW

PLS: Midway T.F. to Arkansas

AXIS MIDSTREAM HOLDINGS, LLC
 Proposed Pipelines & Facilities
MIDWAY to HARBOR ISLAND PROJECT
 SAN PATRICIO & NUECES COUNTIES, TEXAS
 Prepared BY: Project Consulting Services, Inc.



AXIS MIDSTREAM

Date: 12/27/2018
 Revised: 3/3/2019

NOTE: THE CONTENT OF THIS DRAWING IS DESIGNED SPECIFICALLY FOR THE PURPOSE OF SECURING FEDERAL, STATE AND LOCAL ENVIRONMENTAL/ REGULATORY AUTHORIZATIONS ONLY.

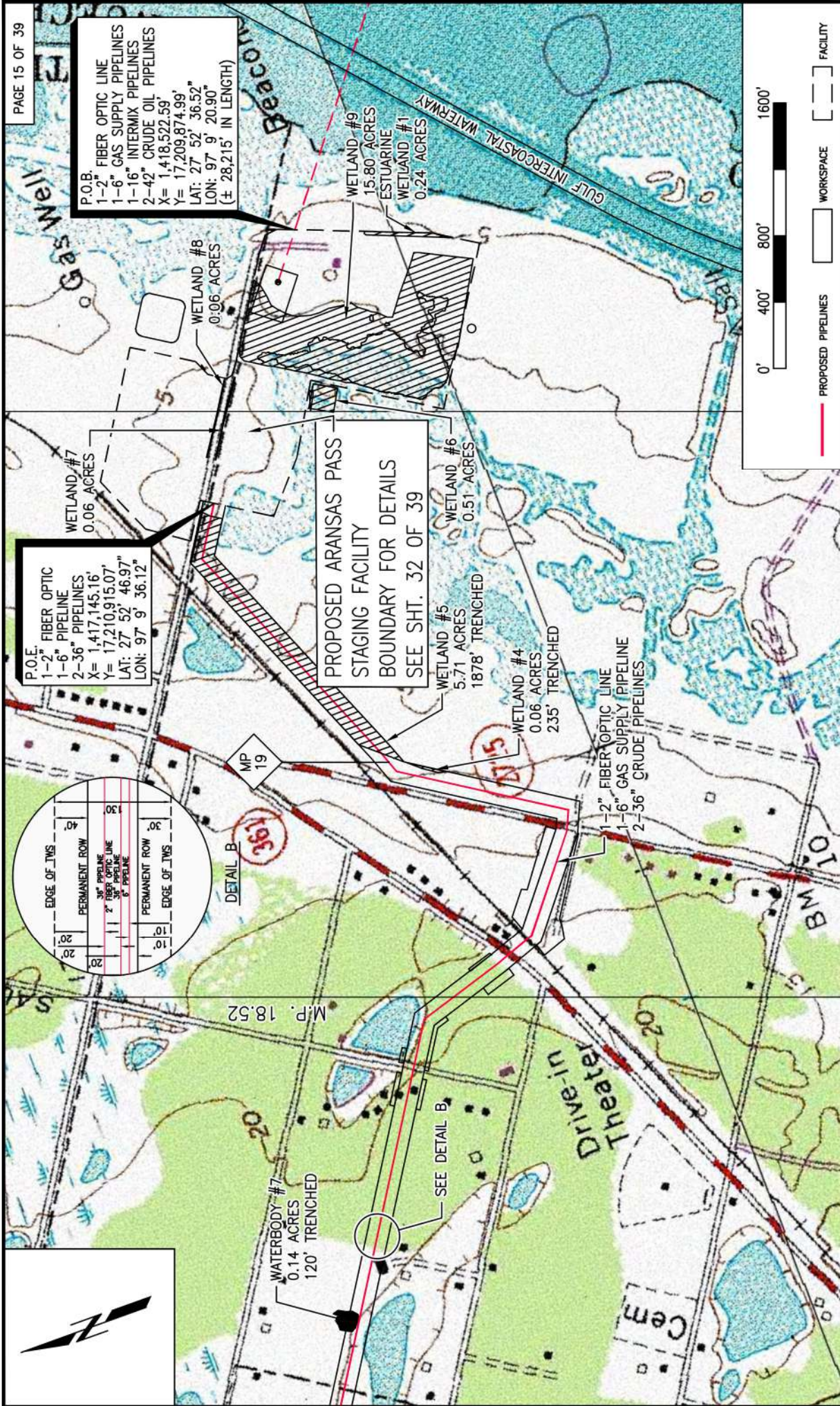
PROJECT CONSULTING SERVICES, INC.
 www.projectconsulting.com

SWG-
2018-
00789

PREPARED BY: LRW
CHECKED BY:
APPROVED BY:
PROJECT NO.: 19012
REISSUE DATE: 3/25/19

NEW ORLEANS, LA ♦ HOUSTON, TX ♦ MOBILE, AL
 BIRMINGHAM, AL ♦ ATLANTA, GA ♦ LAFAYETTE, LA
 MANDEVILLE, LA ♦ SAN ANTONIO, TX
 CHICAGO, IL ♦ NORTH HAMPTON, NH

Sheet
14/42



PLAN VIEW
Pls. Midway T.F. to Aransas

AXIS MIDSTREAM HOLDINGS, LLC
Proposed Pipelines & Facilities
MIDWAY TO HARBOR ISLAND PROJECT
SAN PATRICIO & NUECES COUNTIES, TEXAS
Prepared BY: Project Consulting Services, Inc.



AXIS MIDSTREAM

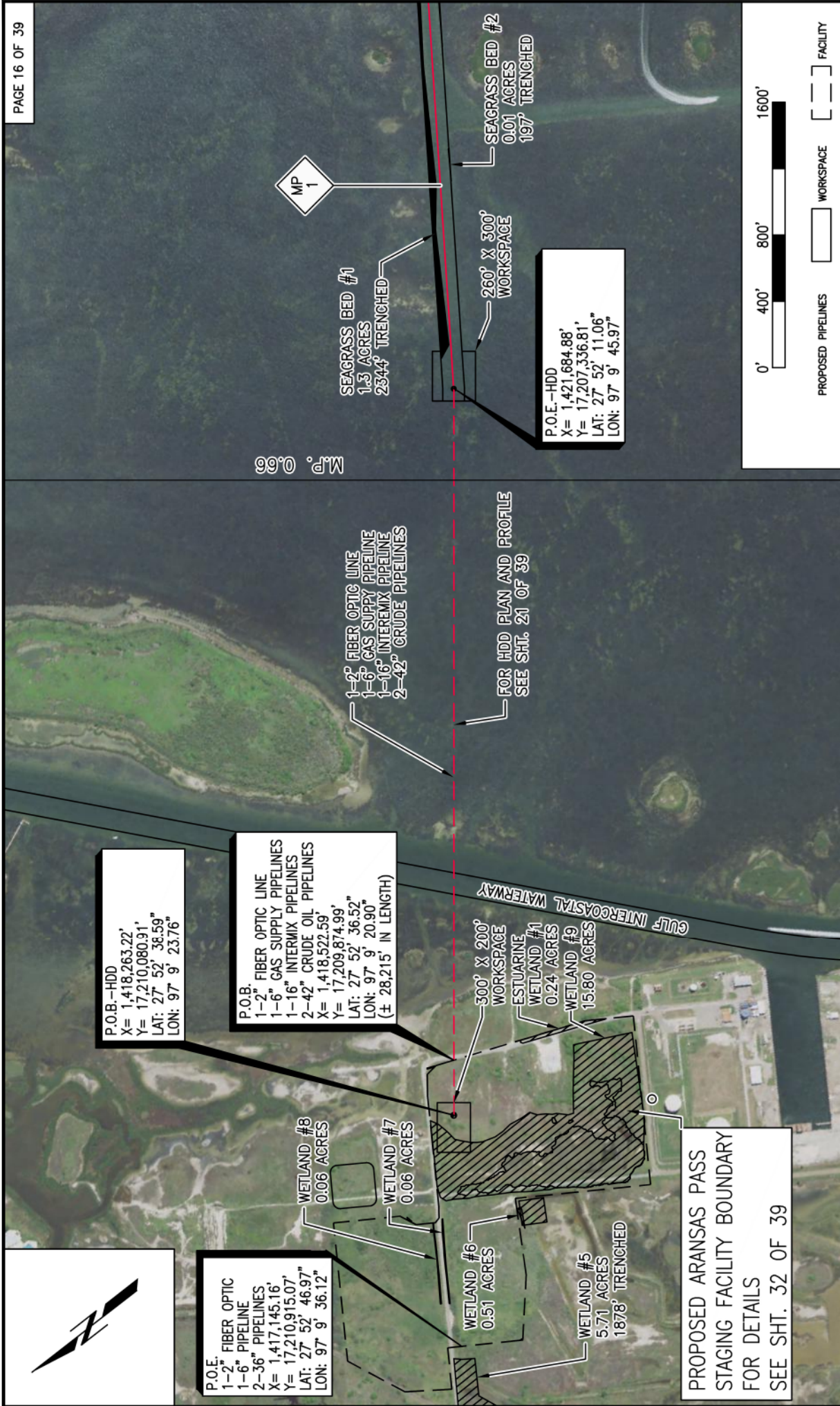
PREPARED BY:	LRW
CHECKED BY:	AL
APPROVED BY:	AL
PROJECT NO.:	19012
ISSUE DATE:	3/25/19

PROJECT CONSULTING SERVICES, INC.
www.projectconsulting.com

NEW ORLEANS, LA ♦ HOUSTON, TX ♦ MOBILE, AL
BIRMINGHAM, AL ♦ ATLANTA, GA ♦ LAFAYETTE, LA
MANDEVILLE, LA ♦ SAN ANTONIO, TX
CHICAGO, IL ♦ NORTH HAMPTON, NH

NOTE: THE CONTENT OF THIS DRAWING IS DESIGNED SPECIFICALLY FOR THE PURPOSE OF SECURING FEDERAL, STATE AND LOCAL ENVIRONMENTAL/ REGULATORY AUTHORIZATIONS ONLY.

SWG-
2018-
00789



PLAN VIEW
 PLS: Aransas To Harbor Island

Date: 12/27/2018
 Revised: 3/3/2019, 6/13/2019

NOTE: THE CONTENT OF THIS DRAWING IS DESIGNED SPECIFICALLY FOR THE PURPOSE OF SECURING FEDERAL, STATE AND LOCAL ENVIRONMENTAL/ REGULATORY AUTHORIZATIONS ONLY.

AXIS MIDSTREAM HOLDINGS, LLC
 Proposed Pipelines & Facilities
 MIDWAY to HARBOR ISLAND PROJECT
 SAN PATRICIO & NUECES COUNTIES, TEXAS
 Prepared BY: Project Consulting Services, Inc.

AXIS MIDSTREAM

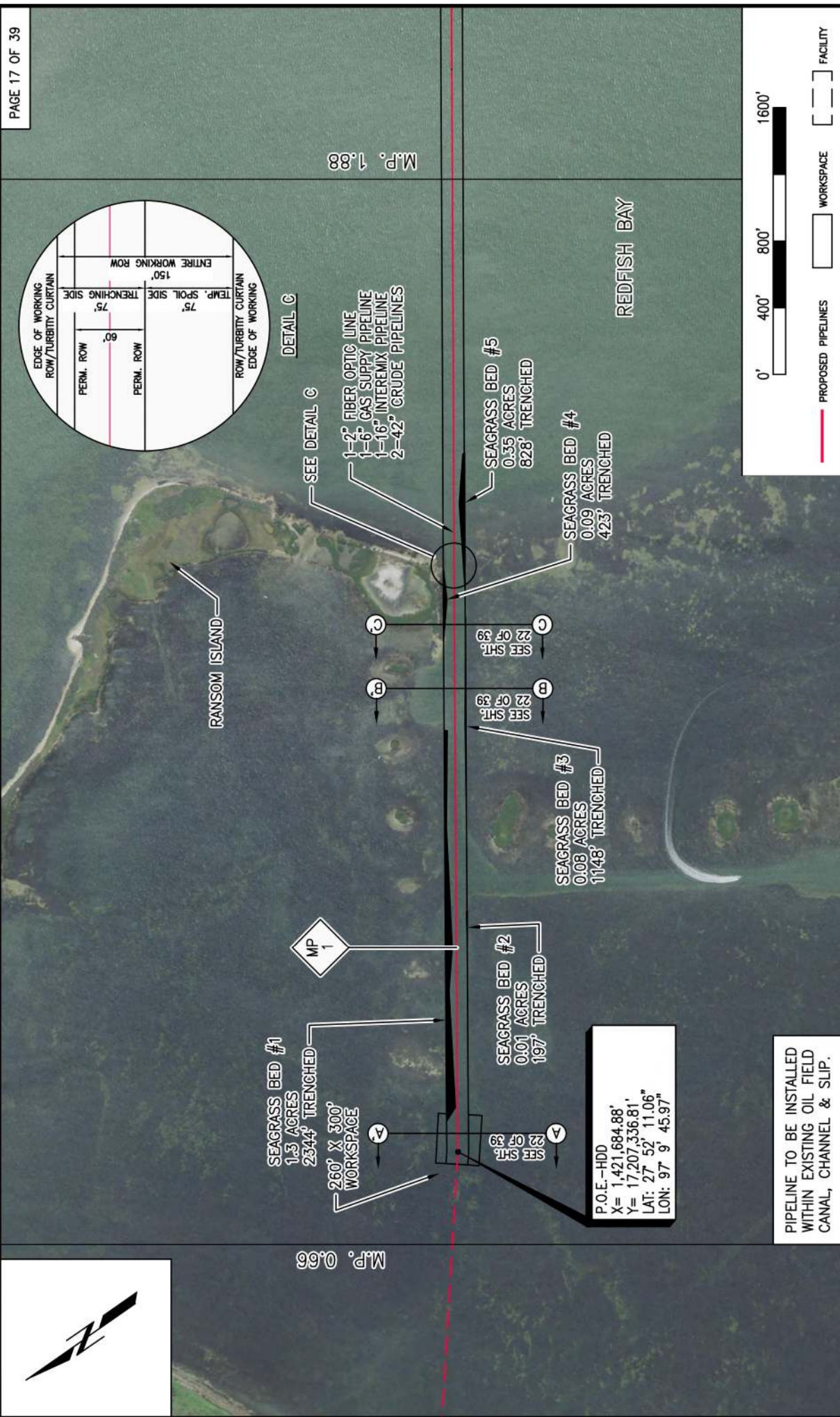
PROJECT CONSULTING SERVICES, INC.
 www.projectconsulting.com

PREPARED BY: LRW
CHECKED BY:
APPROVED BY:
PROJECT NO.: 19012
REISSUE DATE: 3/25/19

NEW ORLEANS, LA ♦ HOUSTON, TX ♦ MOBILE, AL
 BIRMINGHAM, AL ♦ ATLANTA, GA ♦ LAFAYETTE, LA
 MANDEVILLE, LA ♦ SAN ANTONIO, TX
 CHICAGO, IL ♦ NORTH HAMPTON, NH

SWG-2018-00789

Sheet 16/42



M.P. 0.66

M.P. 1.88

SEAGRASS BED #1
1.3 ACRES
2344' TRENCHED
260' X 300' WORKSPACE

SEAGRASS BED #2
0.01 ACRES
197' TRENCHED

SEAGRASS BED #3
0.08 ACRES
1148' TRENCHED

SEAGRASS BED #4
0.09 ACRES
423' TRENCHED

SEAGRASS BED #5
0.35 ACRES
826' TRENCHED

1-2" FIBER OPTIC LINE
1-6" GAS SUPPLY PIPELINE
1-16" INTERMIX PIPELINE
2-42" CRUDE PIPELINES

PIPELINE TO BE INSTALLED WITHIN EXISTING OIL FIELD CANAL, CHANNEL & SLIP.

P.O.E.-HDD
X= 1,421,684.86'
Y= 17,207,336.81'
LAT: 27 52' 11.06"
LON: 97 9 45.97"

PIPELINE TO BE INSTALLED WITHIN EXISTING OIL FIELD CANAL, CHANNEL & SLIP.

NOTE: THE CONTENT OF THIS DRAWING IS DESIGNED SPECIFICALLY FOR THE PURPOSE OF SECURING FEDERAL, STATE AND LOCAL ENVIRONMENTAL/ REGULATORY AUTHORIZATIONS ONLY.

Date: 12/27/2018
Revised: 3/3/2019

PLAN VIEW
PLs: Aransas To Harbor Island



PROPOSED PIPELINES [red line symbol]
WORKSPACE [white box symbol]
FACILITY [grey box symbol]



PROJECT CONSULTING SERVICES, INC.
www.projectconsulting.com

NEW ORLEANS, LA ♦ HOUSTON, TX ♦ MOBILE, AL
BIRMINGHAM, AL ♦ ATLANTA, GA ♦ LAFAYETTE, LA
MANDEVILLE, LA ♦ SAN ANTONIO, TX
CHICAGO, IL ♦ NORTH HAMPTON, NH

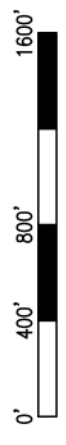
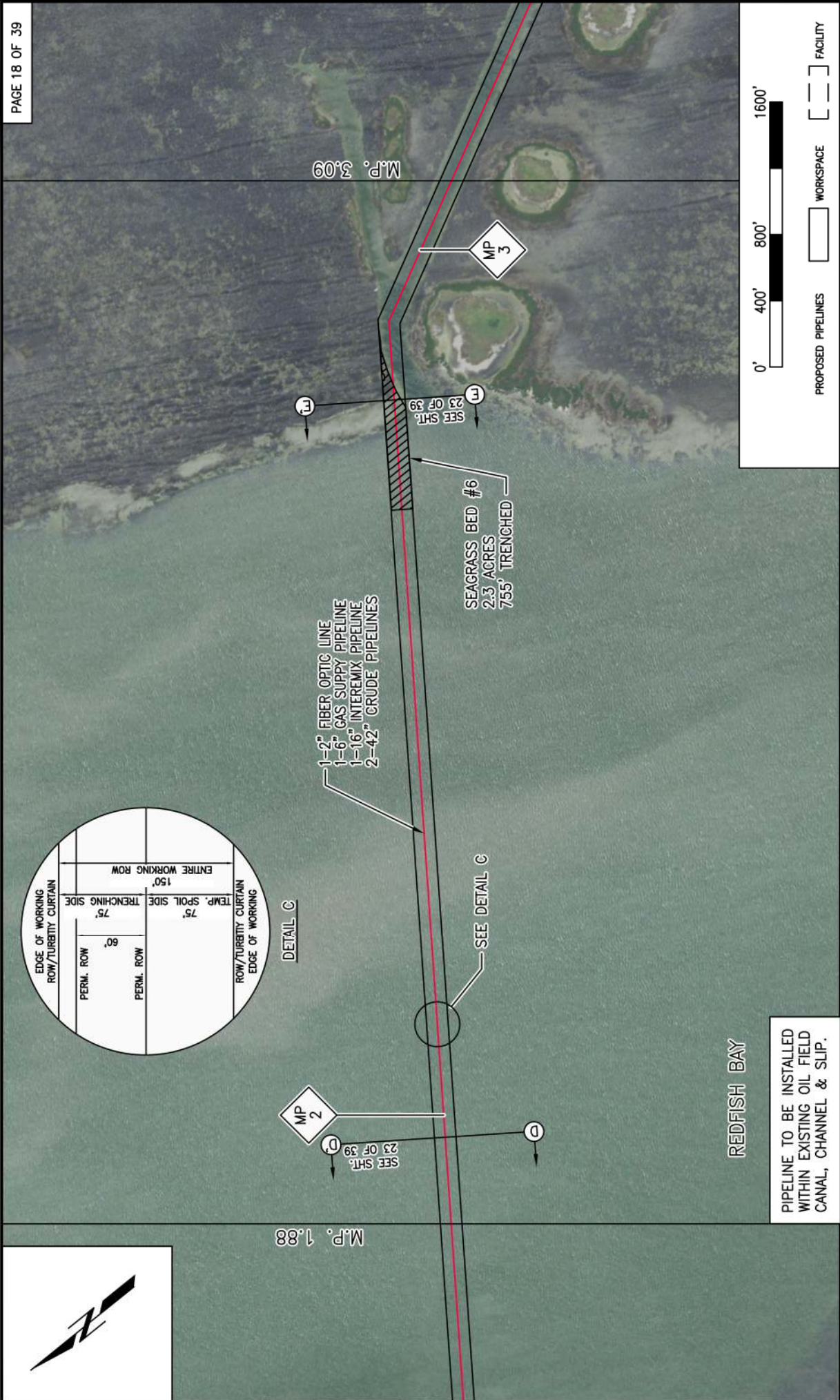
PREPARED BY: LRW
CHECKED BY:
APPROVED BY:
PROJECT NO.: 19012
REISSUE DATE: 3/25/19



AXIS MIDSTREAM

AXIS MIDSTREAM HOLDINGS, LLC
Proposed Pipelines & Facilities
MIDWAY TO HARBOR ISLAND PROJECT
SAN PATRICIO & NUECES COUNTIES, TEXAS
Prepared BY: Project Consulting Services, Inc.

Sheet 17/42



PROPOSED PIPELINES WORKSPACE FACILITY

PLAN VIEW

PLs: Aransas To Harbor Island

Date: 12/27/2018
Revised: 3/3/2019, 5/3/2019

NOTE: THE CONTENT OF THIS DRAWING IS DESIGNED SPECIFICALLY FOR THE PURPOSE OF SECURING FEDERAL, STATE AND LOCAL ENVIRONMENTAL/ REGULATORY AUTHORIZATIONS ONLY.

AXIS MIDSTREAM HOLDINGS, LLC
Proposed Pipelines & Facilities
MIDWAY to HARBOR ISLAND PROJECT
SAN PATRICIO & NUECES COUNTIES, TEXAS
Prepared BY: Project Consulting Services, Inc.

AXIS MIDSTREAM

PROJECT CONSULTING SERVICES, INC.
www.projectconsulting.com

PREPARED BY: LFW
CHECKED BY:
APPROVED BY:
PROJECT NO.: 19012
ISSUE DATE: 3/25/19

NEW ORLEANS, LA ♦ HOUSTON, TX ♦ MOBILE, AL
BIRMINGHAM, AL ♦ ATLANTA, GA ♦ LAFAYETTE, LA
MANDVILLE, LA ♦ SAN ANTONIO, TX
CHICAGO, IL ♦ NORTH HAMPTON, NH

EDGE OF WORKING ROW/TURBIDITY CURTAIN	150'	ENTIRE WORKING ROW
PERM. ROW	75'	TRENCHING SIDE
PERM. ROW	60'	TEMP. SPOIL SIDE
ROW/TURBIDITY CURTAIN	75'	EDGE OF WORKING ROW

DETAIL C



M.P. 1.88

M.P. 3.09

REDFISH BAY

PIPELINE TO BE INSTALLED WITHIN EXISTING OIL FIELD CANAL, CHANNEL & SLIP.

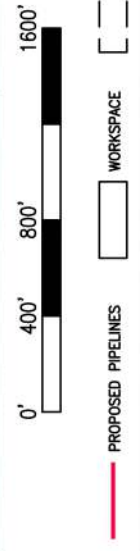
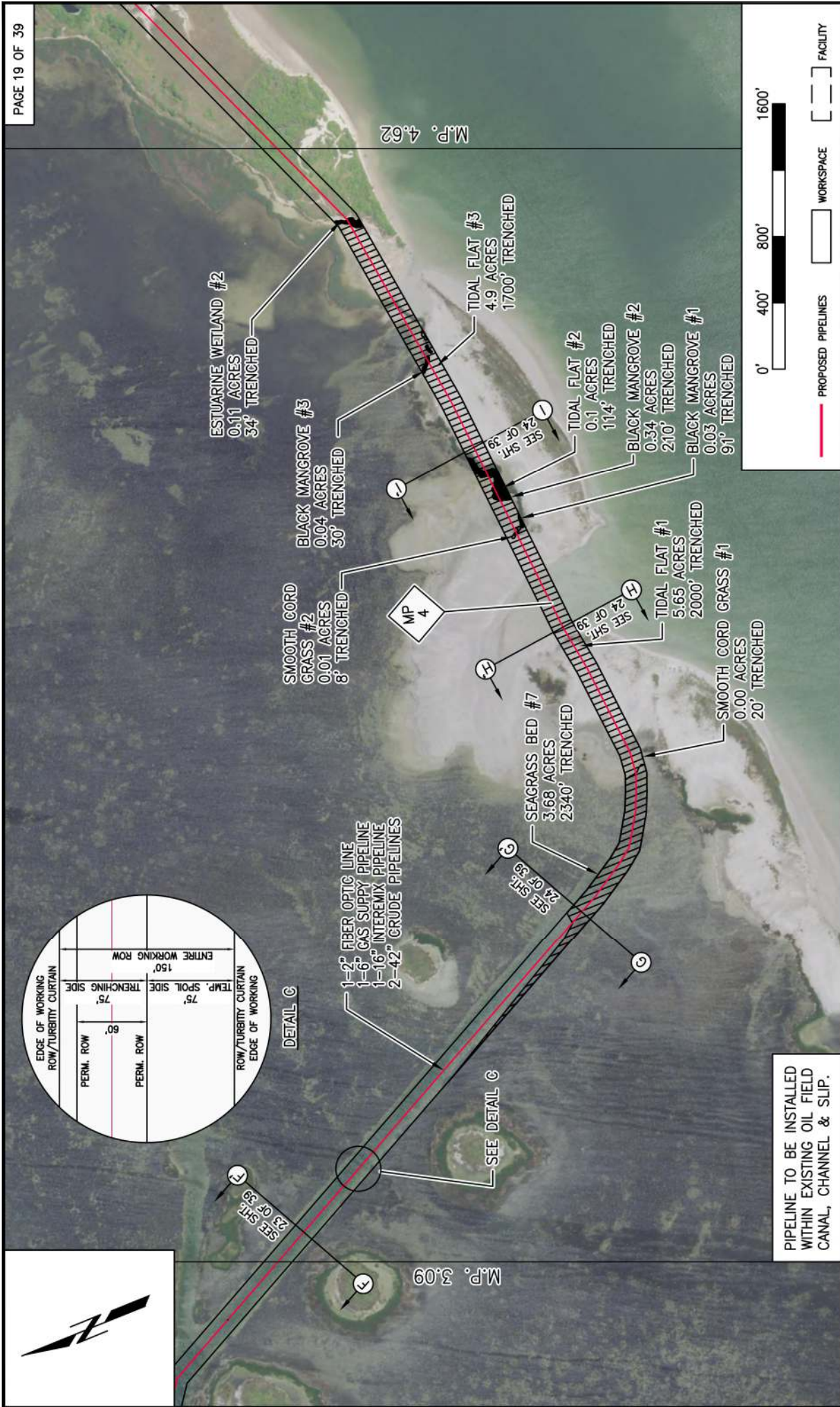
SEE DETAIL C

1-2" FIBER OPTIC LINE
1-6" GAS SUPPLY PIPELINE
1-16" INTERMIX PIPELINE
2-42" CRUDE PIPELINES

SEAGRASS BED #6
2.3 ACRES
755' TRENCHED

SEE SHT. 23 OF 39

SEE SHT. 23 OF 39



PLAN VIEW

PLs: Aransas To Harbor Island

Date: 12/27/2018
Revised: 3/3/2019

NOTE: THE CONTENT OF THIS DRAWING IS DESIGNED SPECIFICALLY FOR THE PURPOSE OF SECURING FEDERAL, STATE AND LOCAL ENVIRONMENTAL/ REGULATORY AUTHORIZATIONS ONLY.

AXIS MIDSTREAM HOLDINGS, LLC
Proposed Pipelines & Facilities
MIDWAY TO HARBOR ISLAND PROJECT
SAN PATRICIO & NUECES COUNTIES, TEXAS
Prepared BY: Project Consulting Services, Inc.

Sheet 19/42

PROJECT CONSULTING SERVICES, INC.
www.projectconsulting.com

NEW ORLEANS, LA ♦ HOUSTON, TX ♦ MOBILE, AL
BIRMINGHAM, AL ♦ ATLANTA, GA ♦ LAFAYETTE, LA
MANDEVILLE, LA ♦ SAN ANTONIO, TX
CHICAGO, IL ♦ NORTH HAMPTON, NH

PREPARED BY: LRW
CHECKED BY:
APPROVED BY:
PROJECT NO.: 19012
REISSUE DATE: 3/25/19

SWG-2018-00789

AXIS MIDSTREAM



PLAN VIEW

PLs: Arkansas to Harbor Island

Date: 12/27/2018
Revised: 3/3/2019

NOTE: THE CONTENT OF THIS DRAWING IS DESIGNED SPECIFICALLY FOR THE PURPOSE OF SECURING FEDERAL, STATE AND LOCAL ENVIRONMENTAL/ REGULATORY AUTHORIZATIONS ONLY.

AXIS MIDSTREAM HOLDINGS, LLC
Proposed Pipelines & Facilities
MIDWAY to HARBOR ISLAND PROJECT
SAN PATRICIO & NUECES COUNTIES, TEXAS
Prepared BY: Project Consulting Services, Inc.

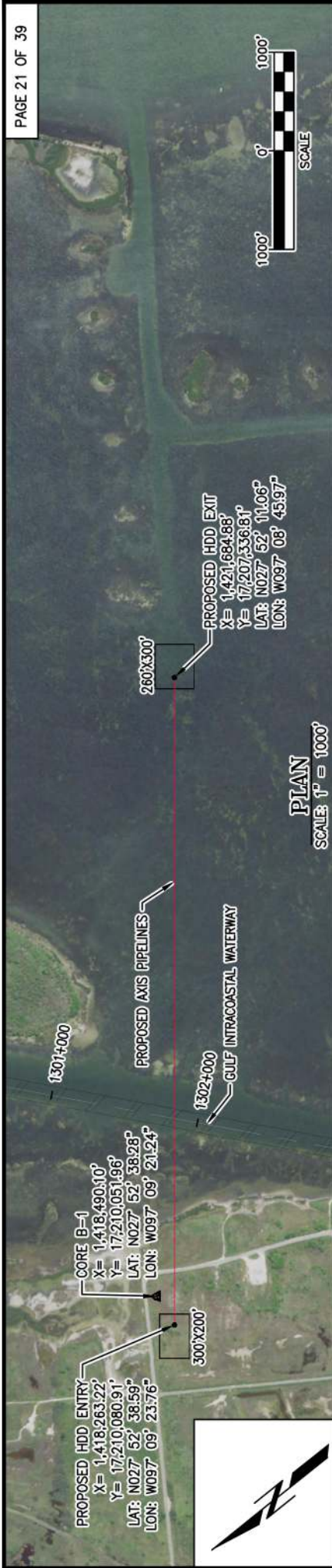
Sheet 20/42

AXIS MIDSTREAM

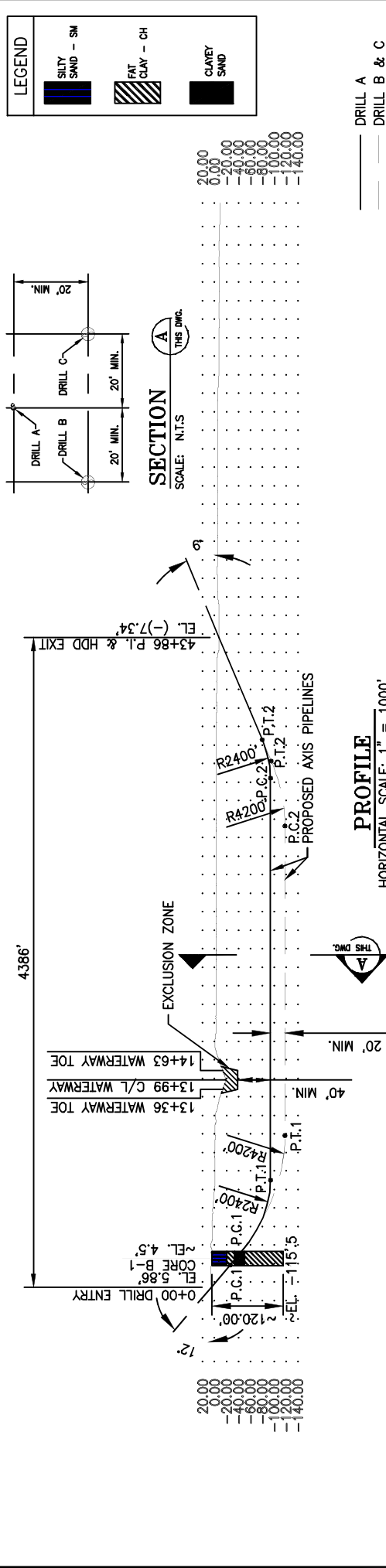
PROJECT CONSULTING SERVICES, INC.
www.projectconsulting.com

NEW ORLEANS, LA ♦ HOUSTON, TX ♦ MOBILE, AL
BIRMINGHAM, AL ♦ ATLANTA, GA ♦ LAFAYETTE, LA
MANDEVILLE, LA ♦ SAN ANTONIO, TX
CHICAGO, IL ♦ NORTH HAMPTON, NH

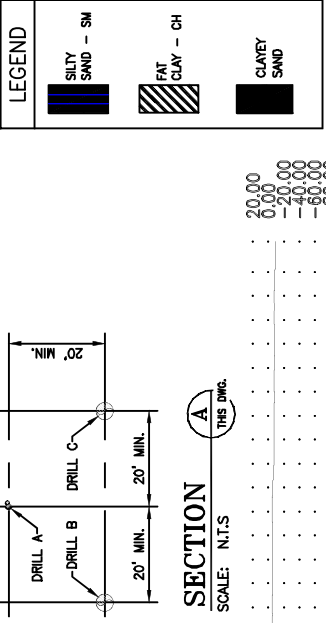
PREPARED BY: LRW
CHECKED BY:
APPROVED BY:
PROJECT NO.: 19012
REISSUE DATE: 3/25/19



PLAN
SCALE: 1" = 1000'




PROFILE
HORIZONTAL SCALE: 1" = 1000'
VERTICAL SCALE: 1" = 250'



SPECIFICATIONS:
 CARRIER PIPE:
 DRILL A BUNDLE
 16,000" O.D. *
 6.625" O.D. *
 2" FIBER OPTIC CABLE
 DRILL B
 42,000" O.D. *
 DRILL C
 42,000" O.D. *
 * PIPE WALL THICKNESS AND COATING TO BE DETERMINED.

GENERAL NOTES:
 1) GRID PROJECTION BASED UPON TEXAS STATE PLANE COORDINATE SYSTEM, CENTRAL ZONE (GRID UNITS IN FEET) GEODETIC DATUM: NAD 1983, CLARKE SPHEROID, 1866.
 2) CONTRACTOR IS RESPONSIBLE FOR FIELD VERIFYING ALL FOREIGN PIPELINE CROSSINGS AND COVER PRIOR TO CONSTRUCTION.
 3) 3 PROPOSED HDD WILL BE INSTALLED IN THE EASEMENT: DRILL A WILL CONSIST OF A BUNDLED ON 16,000" O.D., ONE 6.625" O.D. AND 2" O.D. DRILL B WILL BE A 42,000" O.D. PIPELINE AND DRILL C WILL BE A 42,000" O.D. PIPELINE.
 4) THE CONTRACTOR WILL BE RESPONSIBLE FOR DETERMINING THE ORDER OF THE DRILLS.
 5) THE ENGINEER'S SEAL AFFIXED TO THIS DRAWING REPRESENTS THE ENGINEERING DESIGN OF THE 3 HDD PROFILES SHOWN ON THIS DRAWING. THE DESIGN IS BASED UPON THE SURVEY INFORMATION PROVIDED BY GUILLETT & ASSOCIATES DISPLAYED HEREIN. THE ISSUANCE OF THIS DRAWING IS NOT INTENDED AS A SURVEYING DOCUMENT AND SHOULD NOT BE USED FOR ESTABLISHMENT OR RECORD OF BOUNDARY, EASEMENTS OR ANY OTHER SURVEYING PURPOSE.

PLAN PROFILE PLS: GIWW HDD	
Date: 12/27/2018 Revised: 3/3/2019	
PROJECT CONSULTING SERVICES, INC. www.projectconsulting.com	
NEW ORLEANS, LA ♦ HOUSTON, TX ♦ MOBILE, AL BIRMINGHAM, AL ♦ ATLANTA, GA ♦ LAFAYETTE, LA MANDEVILLE, LA ♦ SAN ANTONIO, TX CHICAGO, IL ♦ NORTH HAMPTON, NH	
PREPARED BY: LRW CHECKED BY: APPROVED BY: PROJECT NO.: 19012 RESSUE DATE: 3/25/19	
AXIS MIDSTREAM HOLDINGS, LLC Proposed Pipelines & Facilities MIDWAY to HARBOR ISLAND PROJECT SAN PATRICIO & NUECES COUNTIES, TEXAS Prepared BY: Project Consulting Services, Inc.	
Sheet 21/42	