

# WEST FACING VILLA PLANS



Where Luxury meets Nature in Perfect Harmony

WEST SIDE 30' WIDE

6'3" SETBACK

FRONT DECK  
10'8" x 3'11"

4' ENTRY

CAR PARK  
7'10" x 16'5"

LIVING AND DINING  
14'1" x 18'4"

BATH  
7'7" x 5'

KITCHEN  
6'10" x 12'

SKYLIGHT  
4'6" x 4'6"

GUEST BEDROOM  
11'7" x 13'5"

UP

1  
2  
3  
4  
5  
6  
7

9 8

3'3" SETBACK

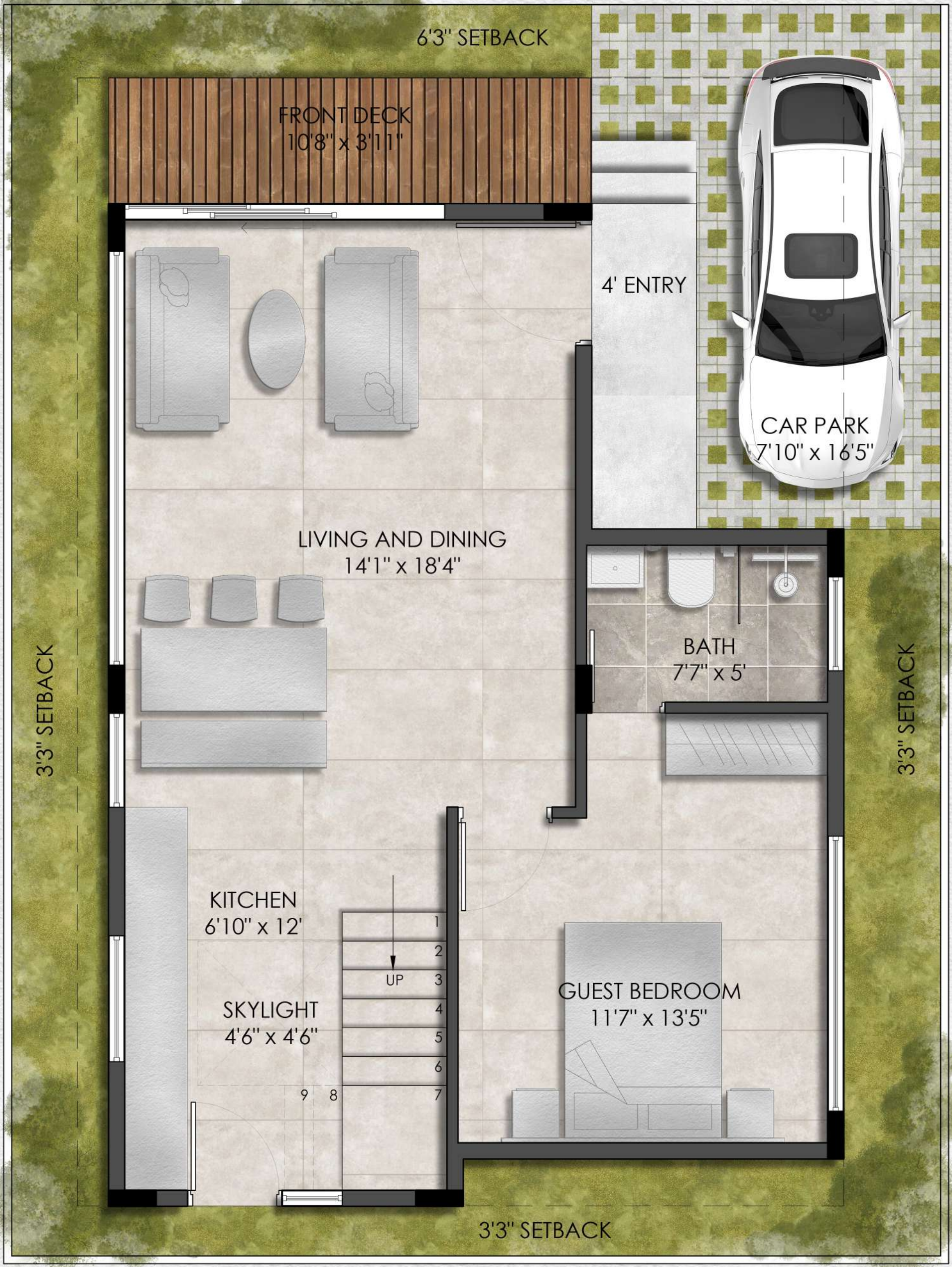
SOUTH SIDE 40' DEEP

3'3" SETBACK

3'3" SETBACK

NORTH SIDE 40' DEEP

EAST SIDE 30' WIDE



WEST SIDE 30' WIDE



SOUTH SIDE 40' DEEP

NORTH SIDE 40' DEEP

EAST SIDE 30' WIDE

WEST SIDE 30' WIDE



SOUTH SIDE 40' DEEP

NORTH SIDE 40' DEEP

EAST SIDE 30' WIDE