

FIRST BAPTIST CHURCH

Eunice Community Concert Band & Choir
presents

LET YOUR

Light
SHINE.

July 11 & 12, 2024
7:00P.M.

EUNICE, LOUISIANA

OUR 67th CONCERT

1990

THIRTY-FOURTH ANNIVERSARY

2024

PROGRAM

Let Your Light Shine	Mary McDonald
Supercalifragilisticexpialidocious <i>from Mary Poppins</i>	arr. John Leavitt
Glorious	arr. Tom Fettke
Jazzy Ol Mac	arr. Kirby Shaw
Just a Closer Walk With Thee	arr. Johnnie Vinson
I Dreamed a Dream <i>from Les Miserables</i>	arr. Michael Brown
Cakewalk <i>(Based on piano melodies of Gottschalk)</i>	arr. Robert Longfield
Hosts of Freedom	Karl King
INTERMISSION	
Little Bitty Pretty One	arr. Kirby Shaw
For Good <i>from WICKED</i>	arr. Mac Huff
You've Got a Friend in Me <i>from Toy Story</i>	arr. Mac Huff
Don't Cry for Me Argentina <i>from Evita</i>	arr. Michael Sweeney
Dixieland Struttin'	Eric Osterling
Danse Bacchanale <i>from Samson & Delilah</i>	arr. Jay Bocook



The ECCBC is grateful to the First Baptist Church Eunice Family for graciously opening your doors to the ECCBC Family for rehearsals and performances. We appreciate your generosity!

PERSONNEL

FLUTE

Martha Bryant Breaux Bridge
Patricia Dossman Eunice
Nadia Fontenot Ville Platte
Allison Jones Lafayette
Julie Mabe Ville Platte
Stacy Prejean Lyons Point
Elizabeth Vidrine Eunice

CLARINET

Sonya Castille New Iberia
Megan LeDoux Iota
Glen Porter Eunice
Alyssa Soileau Pine Prairie
Laura Viator New Iberia
Shelby Vuillemont Basile

BASSOON

Eric Lambousy Lafayette

SAXOPHONE

Jasmine Carter Eunice
Michael Smith Pine Prairie
Jackson Williams Basile

TRUMPET

Jalynn Campbell Pine Prairie
John Havard Opelousas
Seth Jones Lafayette
Olivia Lauterbach Ville Platte
Cindy Mouton Scott
Kaitlin Mouton Scott
James Naquin New Iberia
Hillary Sarver Branch
Kayleigh Sullivan Ville Platte
Sarah Sullivan Ville Platte
Zeke Trahan Basile
Tavia Vuillemont Basile

FRENCH HORN

Michael McElroy Eunice
Kelly Monier Ville Platte

TROMBONE

Alec Aguillard Basile
Dwight Manuel Lafayette
Camren Vidrine Pine Prairie

EUPHONIUM

John Bordelon Pine Prairie
Kayden Soileau Pine Prairie
Peyton Thibodeaux Eunice

TUBA

Jimi Bergeron Basile
Joseph Stemplewski Iota

KEYBOARD

Connie C. Beaugh Eunice
Jan Carboni Lafayette

PERCUSSION

Phillip Gaspard Eunice
Keith Jodon Eunice
John Phelan Harvey

SOPRANO

Courtney Bolles Jennings
Angela Callahan Crowley
Jalynn Campbell Pine Prairie
Jan Carboni Lafayette
Meredith Disher Scott
Patricia Dossman Eunice
Tina Hensgens Mowata
Shirley Jodon Eunice
Brenda LeJeune Eunice
Dori Menard Eunice
Kelly Monier Ville Platte
Stacy Prejean Lyons Point
Sandy Reiners Lawtell
Melanie Soileau Ville Platte

ALTO

Tonia Bertrand Iota
Erika Carlson Rayne
Annie DiDonato Eunice
Callie Dischler Eunice
Jennifer Fowler Eunice
Ellen Dunlap Vick
Martha Guempel Eunice
Ginger Jernigan Eunice
Joyce Johnson Eunice
Gina Lagrange Eunice
Dolores Peterson Eunice
Tavia Vuillemont Basile

TENOR

Jeanne Eddins Iota
Kirk Hebert Eunice
Rick Peterson Eunice
Glen Porter Eunice
Robert Soileau Ville Platte

BASS

Jimi Bergeron Basile
Michael McElroy Eunice
Greg Milton Crowley

LIGHTING

Paul Fowler Eunice

VISUAL MEDIA

Tammy Stanford Chataignier

SOUND

Rocky Ogea Eunice

SPECIAL GUEST

Sawyer Bergeron Eunice

LOBBY

Hanson Jodon Eunice
Joy Jodon Eunice
Berna Mire Eunice
Brad Richard Eunice
Katie Richard Eunice

MASTER OF CEREMONIES

Stephen Guempel Eunice

PIANO ACCOMPANIST

Connie C. Beaugh Eunice

GENERAL MANAGER / COFOUNDER

Patricia Dossman Eunice

CONDUCTOR / COFOUNDER

Dwight Jodon Eunice

RHONDA FINK MOSER, O.D.
SARAH MOSER FRUGE', O.D.

301 S. SECOND STREET
P.O. BOX 511
EUNICE, LA 70535
PH: 337-457-2376



*Thanks to the Eunice
community for over 75
years of business!*



2250 W. Laurel Avenue
Eunice, LA 70535 337-457-3776

**EUNICE MEDICAL
LABORATORY, INC.**



DAVID DARBONNE, MT (ASCP)
450 Moosa Blvd., Ste. C
Eunice, Louisiana 70535

Come see us for all your blood and labwork needs
Open 7am-5pm, Monday-Friday
Insurance, Medicare & Medicaid Accepted, 337-457-5562

TOMMY HILLMAN DDS

DDS DENTURES & IMPLANTS
337-520-0196

KATHY TRACY MD

WEIGHT WISE MEDICAL WEIGHT LOSS
337-855-DIET (3438)
THURSDAYS IN EUNICE
DRKTRACY.COM



DSB,

CPA'S

DUGAS, SOILEAU & BREAUX, L.L.C.
CERTIFIED PUBLIC ACCOUNTANTS

*Music washes
away from the soul
the dust of everyday life.*

122 East 5th Street
Post Office Drawer 307
Crowley, LA 70527-0307
phone (337) 783-0650
fax (337) 783-7238

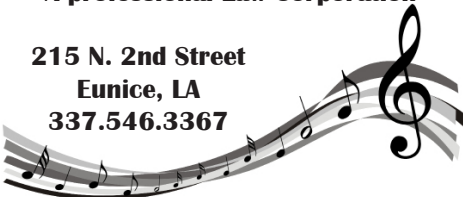


337.304.1727 www.cypressgroveplace.com

Donald R. Richard, Jr.
Attorney At Law

Donald L. Mayeux
A professional Law Corporation

215 N. 2nd Street
Eunice, LA
337.546.3367



Special Thanks to
First Baptist Church

*for providing the Community
Concert Band & Choir and
Children's Choir with rehearsal
& performance facilities!*



fbce.net

David Ltd.
HAIR & NAIL SALON

546-0163

DAVID W. MANUEL
Owner

204 S. Second
Eunice, LA 70535



Rotary

Eunice LA



KENDALL FONTENOT

StateFarm.com

1110 W. Laurel
Eunice, LA 70535

Phone:
337-546-6501

**Jason M. Smith,
D.C.**

337-457-1376

200 N 2nd St
Eunice LA

**Smith
FAMILY**
Chiropractic & Wellness, LLC
www.Sm .net



**ECCBC
ALTO
SECTION**

WELCOME
We're so glad you're here!

Charles
Quillard
agency, inc.



1241 E. Laurel
457-5231

Vige, Tujague & Noel

CERTIFIED PUBLIC ACCOUNTANTS

151 N. 2nd Street, Eunice, LA
457-9324

Chuck & Lize Richard



Clay M. Duos, D.D.S.

GENERAL DENTISTRY

481 MOOSA BLVD.
EUNICE, LA 70535
TELEPHONE (337) 457-9035
www.drduos.com

Olivia Ardoin, R.D.H.
Cindy Reviere, R.D.H.
DENTAL HYGIENISTS

24 HOUR NOTICE NECESSARY FOR CANCELLATION

DATES OF OUR
2024 CHRISTMAS
CONCERT:

Dec 5 & 6
Thursday
& Friday



ECCBC
EUNICE COMMUNITY
CONCERT BAND & CHOIR



FALCON
Rice Mill, Inc

CROWLEY, LOUISIANA



Tim P. Fontenot, D.D.S.
Tim S. Fontenot, D.D.S.

General Dentistry

www.fontenotdds.com Tel: (337) 457-1342
149 N. 3rd St. Eunice, LA 70535 FAX: (337) 457-1354

L & L Sandblasting Inc

1498 Hwy 190 Eunice



SUPPORTING *Arts* PERFORMING


Coburn's
Coburn Supply Company

DISTRIBUTORS OF

PLUMBING • HEATING • AIR CONDITIONING • ELECTRICAL
REFRIGERATION • MUNICIPAL • UTILITY • EQUIPMENT • SUPPLIES

COBY CLAVIER

BRANCH MANAGER

770 N CC DUSON

EUNICE, Louisiana 70735

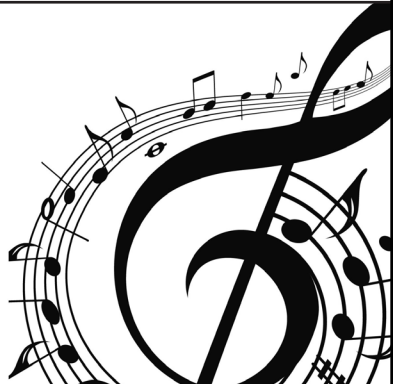
email: CCLAVIER@COBURNS.COM

www.coburns.com

PH: 337-457-7324

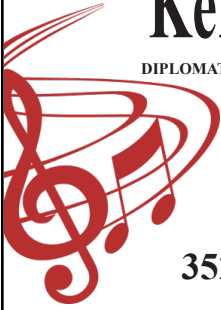
FX: 337-457-1217

WATTS: 800-832-8428



Kermen D. Beauchamp, M.D.

DIPLOMATE, AMERICAN BOARD OF PEDIATRICS CHILDREN AND ADOLESCENT MEDICINE



Office Hours: Monday-Friday (337) 457-2301
9AM - 12 Noon & 1PM - 5PM

3521 Hwy 190, Suite R, Eunice, LA 70535

RICE PALACE

A colorful illustration of rice stalks and grains, with some grains appearing to be scattered or falling, positioned below the 'RICE PALACE' text.

CROWLEY, LOUISIANA



**BASILE
STATE BANK**

MOBILE CHECK DEPOSIT

Now available from
Basile State Bank!

Available for Apple & Android devices!



Visit our Website: www.basilebank.com



Monty N. Heinen

M.D.F.A.C.O.G.

Obstetrics & Gynecology



Mon. - Wed. 8:00-5:00

Thurs. 8:00-4:00

Friday 9:00-12:00

3448 Hwy. 190
Eunice, Louisiana 70535

Ph. 337-546-6237
Fax 337-550-7257

CONCERT TITLES

1990	July	<i>A Family Concert of Patriotism and Americana</i>	2007	July	<i>Star-Spangled Summer</i>
	Dec	<i>A Caroling Christmas</i>		Dec	<i>Fireside Christmas</i>
1991	July	<i>A Grand Ole Summer</i>	2008	July	<i>Rhythm of Life</i>
	Dec	<i>Coming Home for Christmas</i>		Dec	<i>Celebrate Christmas</i>
1992	July	<i>Spirit of the South</i>	2009	July	<i>Sounds Like Summer</i>
	Dec	<i>A Very Merry Christmas</i>		Dec	<i>Laughing All the Way</i>
1993	July	<i>Rhapsody</i>	2010	July	<i>Thanks for the Memories</i>
	Dec	<i>A Storybook Christmas</i>		Dec	<i>Bells of Joy</i>
1994	July	<i>Centennial</i>	2011	July	<i>It's Showtime!</i>
	Dec	<i>The Most Wonderful Time of the Year</i>		Dec	<i>Noel</i>
1995	July	<i>For America</i>	2012	July	<i>Let Me Entertain You!</i>
	Dec	<i>A Kid's Christmas</i>		Dec	<i>Good Tidings To All</i>
1996	July	<i>Regards to Broadway</i>	2013	July	<i>Let Freedom Ring</i>
	Dec	<i>Season of Dreams</i>		Dec	<i>Christmas Peace</i>
1997	July	<i>Back in the Good Old Days</i>	2014	July	<i>Sweet Sounds of Summer</i>
	Dec	<i>It's Christmas</i>		Dec	<i>Merry Christmas Everyone</i>
1998	July	<i>Razzle Dazzle</i>	2015	July	<i>25th Anniversary Concert</i>
	Dec	<i>Candy Canes and Christmas</i>		Dec	<i>On With the Snow!</i>
1999	July	<i>Swing</i>	2016	July	<i>Summer Pops!</i>
	Dec	<i>One Magic Christmas</i>		Dec	<i>A Jolly Jingling Christmas</i>
2000	July	<i>Celebrate 2000</i>	2017	July	<i>Then Sings My Soul</i>
	Dec	<i>Gloria!</i>		Dec	<i>Dashing Through the Snow</i>
2001	July	<i>Dare to Dream</i>	2018	July	<i>Curtain Call</i>
	Dec	<i>Sing We Now of Christmas</i>		Dec	<i>Jing-A-Ling</i>
2002	July	<i>America: My Home</i>	2019	July	<i>Zazz</i>
	Dec	<i>Christmas Joy</i>		Dec	<i>Christmas</i>
2003	July	<i>That's Entertainment</i>	2020	July/Dec	NO CONCERTS
	Dec	<i>Jubilate</i>	2021	July	<i>Be Our Guest</i>
2004	July	<i>Summer Serenade</i>		Dec	<i>Let the Bells Ring!</i>
	Dec	<i>Sing Noel</i>	2022	July	<i>It's All Right</i>
2005	July	<i>Encore!</i>		Dec	<i>Season of Joy</i>
	Dec	<i>A Christmas Festival</i>	2023	July	<i>Summertime</i>
2006	July	<i>Viva Musica!</i>		Dec	<i>Merry Christmas</i>
	Dec	<i>The Spirit of Christmas</i>	2024	July	<i>Let Your Light Shine</i>

A Few Music Facts

1. Barry Manilow didn't write "I Write the Songs." Bruce Johnston did.
2. Singing in a group boosts your mood.
3. Metallica is the first and only band to have played on all 7 continents.
4. The Simpsons song, "Do the Bartman" was written by Michael Jackson
5. None of The Beatles could read or write music.
6. Music is physically good for your heart.
7. Prince played 27 instruments on his debut album.
8. Plants can actually respond to music! Several studies have shown that plants grow faster and healthier when exposed to music.

PERFORMING ARTS OPPORTUNITIES

- ♦ **Kenny Wayne Shepherd Band**, Raising Cane's River Center, Baton Rouge – July 13
- ♦ **DCI Houston TX**, Panther Stadium, Prairie View TX – July 19
- ♦ **DCI Monroe LA**, Malone Stadium, Monroe LA – July 24
- ♦ **DCI Southern Mississippi**, M.M. Roberts Stadium, Hattiesburg MS – July 24
- ♦ **The Music of Led Zeppelin**, Heymann Center, Lafayette – August 2
- ♦ **Los Angeles Azules**, Mahalia Jackson Theater, New Orleans – August 29
- ♦ **Shrek the Musical**, Mahalia Jackson Theater, New Orleans – September 6
- ♦ **Pam Tillis**, Grand Opera House, Crowley – September 14
- ♦ **Sesame Street Live**, Raising Cane's River Center, Baton Rouge – September 18
- ♦ **Cirque Du Soleil Songblazers**, Mahalia Jackson Theater, New Orleans – September 18
- ♦ **Jo Koy**, Mahalia Jackson Theater, New Orleans – September 28
- ♦ **The Bayou Blues Festival**, Raising Cane's River Center, Baton Rouge – October 5
- ♦ **Lafayette Concert Band, Fall Festival of Sound**, Lafayette High School – October 6
- ♦ **Ray Wylie Hubbard**, Grand Opera House, Crowley – October 25
- ♦ **Lonestar**, Lutcher Theater, Orange, TX – November 3
- ♦ **The Avett Brothers**, Mahalia Jackson Theater, New Orleans – November 7
- ♦ **Bonnie Raitt**, Mahalia Jackson Theater, New Orleans – November 8
- ♦ **Beetlejuice**, Mahalia Jackson Theater, New Orleans – November 12
- ♦ **Joe Gatto**, Raising Cane's River Center, Baton Rouge – November 15
- ♦ **Cirque Dreams Holiday**, Lutcher Theater, Orange, TX – November 16
- ♦ **An Evening with Kristin Chenoweth**, LA Philharmonic Orchestra, The Orpheum Theater, New Orleans – November 20
- ♦ **Elf**, Mahalia Jackson Theater, New Orleans – December 3
- ♦ **ECCBC Christmas Concert**, First Baptist Church, Eunice – December 5 & 6
- ♦ **Gabriel Iglesias**, Raising Cane's River Center, Baton Rouge – December 7
- ♦ **Marc Broussard**, Grand Opera House, Crowley – December 13
- ♦ **Lafayette Concert Band, Sounds of the Season**, Lafayette High School – December 15
- ♦ **Nutcracker, Magical Christmas Ballet**, Mahalia Jackson Theater, New Orleans – December 30

2025

- ♦ **The Sleeping Beauty (Ballet)**, Raising Cane's River Center, Baton Rouge – January 8
- ♦ **LeAnn Rimes**, Lutcher Theater, Orange, TX – January 25
- ♦ **Mamma Mia**, Mahalia Jackson Theater, New Orleans – February 16
- ♦ **Chicago**, Lutcher Theater, Orange, TX – February 20
- ♦ **Alice**, Lutcher Theater, Orange, TX – March 7
- ♦ **Swan Lake**, Heymann Center, Lafayette – March 15
- ♦ **Hamilton**, Mahalia Jackson Theater, New Orleans – April 8-20
- ♦ **The Wiz**, Mahalia Jackson Theater, New Orleans – May 13-18
- ♦ **Chicago**, Mahalia Jackson Theater, New Orleans – June 10-15

ST. LANDRY PARISH TOURIST COMMISSION cajuntravel.com

EUNICE PLAYERS' THEATRE [Eunice Players' Theatre on Facebook](#)

ACADIANA SYMPHONY ORCHESTRA acadianasympphony.org

GRAND OPERA HOUSE thegrandoperahouse.org

ACADIANA CENTER FOR THE ARTS acadianacenterforthearts.org

RAISING CANE'S RIVER CENTER raisingcanesrivercenter.com

LAFAYETTE BROADWAY SERIES lafayettebroadway.com

DRUM CORPS INTERNATIONAL dci.org

SAENGER THEATRE saengernola.com

HEYMANN CENTER heymanncenter.com

MAHALIA JACKSON THEATER mahaliajacksontheater.com

CAJUNDOME cajundome.com

LUTCHER THEATER lutcher.org

BECKY & BRIAN
TANNER
BRAVO!

**EUNICE
PLAYERS'
THEATRE**



337.457.2218
260 N. 2nd Street, Eunice, LA

**DR. & MRS.
REGINALD
SEGAR**

ZEB STEARNS, M.D.

Family Practice
Hours: M - F / 8:00 - 5:00



450 Moosa Blvd., Ste. A
Eunice, LA 70535

Phone: (337) 546-6646
Fax: (337) 546-0111

Fruge' Family
CHIROPRACTIC

337-466-7470





Supported by our

Catholic Community



St. Anthony
St. Mathilda
St. Thomas More

The Flower House

Fresh & Silk Floral Arrangements-Plants
Gift Baskets-Balloon Bouquets-Unique Gift Items



Ethel Meche
(337) 546-0257

450 N. 2nd Street
Eunice, La. 70535

Darnall, Sikes & Frederick



*A Corporation
of Certified
Public Accountants*

SMITH *True Value* HARDWARE

300 E Laurel 337-457-3113
Eunice Louisiana

Harry A. Smith, Jr. & Claire Smith
Owners



Don & Debbie Leonards



620 West
Maple Ave
Eunice
457-3007



EUNICE MANOR

3859 US-190, Eunice, 337.457.2681

**GOT LOVE!
BUILDING RELATIONSHIPS!**

Nickie Toups
ADMINISTRATOR



LIKE us on Facebook!

www.facebook.com/eccbc

THE
Organization
Established in 1990

The Eunice Community Concert Band & Choir, Inc. was organized in February of 1990 with the intent to promote vocal and instrumental music in Eunice and the surrounding area. The organization is open to anyone who enjoys and appreciates vocal and instrumental music. There are no auditions or dues. We depend solely on the contributions of merchants and individuals and provide two concerts each year, July and December. The organization is operated by volunteers and pays no salaries.

In the last thirty-four years the band and choir has produced sixty-six concerts. Also during these years we have provided music for: Eunice July Fourth celebrations, LSUE commencement exercises, city inaugurations, Eunice Centennial Celebration (performing an original work by Dr. Quincy Hilliard, ASCAP, commissioned by the ECCBC for the celebration), LSUE community fun days, Eunice Christmas celebrations, and presented concerts in Crowley, Oakdale, Ville Platte, Lafayette and New Iberia. Several members of the community choir participated in a concert at Carnegie Hall in New York City in 1994. Joining singers from across the country, the group was

directed by Dr. James Haygood and world-renowned choral conductor John Rutter.

The ECCBC has enjoyed much success since 1990. Membership in the organization has grown to over 180. For any given concert there may be as few as forty or as many as eighty of those members performing on stage. For many, the rehearsal season provides a wholesome social activity and an opportunity to meet new friends.

The organization adds to the uniqueness of this city. *Very few* American cities the size of Eunice have a musical organization such as the ECCBC. We are proud of all that we have done and look forward to serving the Eunice area with quality, family programs for many years to come. ☘

CONTACT US:

ECCBC / 351 W Maple Ave

Eunice, Louisiana 70535

PH: 337.457.1776

Email: eccbc1990@gmail.com

ECCBC.org





OUR LOGO

In 1992, the ECCBC commissioned the University of Louisiana at Lafayette art department to create a logo for the organization. After a meeting with Dwight Jodon, Pat Dossman and the department, approximately fifteen art students set about the task of designing an appropriate ensignia.

Several of the proposed designs centered around the organization's acronym, ECCBC. However, the winning design was a simple graphic. It symbolizes the semicircle staging used by musical ensembles globally. The image is one *in motion* as the conductor's baton sweeps across the design. This particular logo was selected because of its simplicity and because the ECCBC is determined to move forward into the future with the mission of sharing the gift of music with the residents of Acadiana.

We are proud to celebrate our thirty-fourth birthday this year, and are excited about our future. It is our desire that this logo would be recognized as *a mark of excellence!*

Musical Instruments Matching

Directions: Draw a line to match the musical instrument on the left to the word on the right.



● Piano



● Guitar



● Bongo



● Keyboard



● Maracas



● Tambourine

Children's Choir

Featured in *Jazzy Ol Mac*

Christian Acevedo
Mason Acevedo
Simon Andrepont
Louissette Broussard
Kennibeth Burgess
Hannah Harper
Harlyn Ivory



Kaidence Jenkins
Kynleigh Jenkins
Reid Richard
Kenleigh Skinner
Harley Sylvester
Rylee Sylvester

Connie C. Beaugh, *Accompanist* **Jan Carboni**, *Assistant*

SUPPORTING THE



JED & CINDY REVIERE



300 West Park, Eunice
(337) 457-7334 JDBANK.COM



SERVICE Above Self

CROWLEY
ROTARY
CLUB



Rotary



Thank You

*We kindly
thank the
following
for their
assistance
with tonight's
production:*

First Baptist
Church Family
Troy Breaux
Jan Carboni

Tammy Stanford
Paul Fowler
Rocky Ogea
Keith Jodon
Joy Jodon
Katie Richard
Brad Richard

Hanson Jodon
Berna Mire
Zeke Trahan
Michael Smith
Greg Milton
Our Advertisers

REHABXCEL **Physical Therapy & Sports Medicine**

Locally Owned and Operated

Michael Driggs, DPT & Lee Miller, DPT
441 Moosa Blvd (337) 457-8164
www.rehabxcelpt.com

Patricia G. Dossman, CLU, LUTCF, CLTC
Dwight R. Jodon, CLU, LUTCF, CLTC
Agents
New York Life Insurance Company

337.457.1776



Ardoins FUNERAL HOMES

1301 W. Laurel ~ Eunice, LA 70535

www.ardoinfuneralhomes.com

Eunice ~ Ville Platte ~ Mamou ~ Basile ~ Iota

Serving Families Since 1938

337-457-3371

Tonight's program is made possible by the
generosity of supporters such as

JACQUE & BECKY PUCHEU



Jacque B. Pucheu, Jr.

— Attorney at Law, LLC —

jacque.pucheu@pprlaw.com

106 Park Avenue, Eunice, LA, 337.457.9075



With our thanks and gratitude,

EUNICE COMMUNITY CONCERT BAND & CHOIR



Superior Water

We Take The Worry Out Of Water.

RainSoft®

Water Treatment Systems



337-466-3833

SUPERIORWATERLA.com



"SERVING THE COMMUNITY FOR OVER 100 YEARS"

101 E. MAPLE AVE. EUNICE

337-457-3384



HEBERT MEDICAL GROUP, APMC

3521 Hwy. 190, Ste. S - Eunice, LA 70535

Charice M. Hebert, M.D.

Richard L. Hebert, II, M.D.



WHAT DID YOU SEE FIRST?

1. TREE
2. GORILLA
3. LION
4. FISH



WASHINGTON
STATE BANK

WSBankla.com



Jeanne Eddins
337-368-9940

Iota, Louisiana

Follow us on Facebook

Riddles

1. What has to be broken before you can use it?
2. I'm tall when I'm young, and I'm short when I'm old. What am I?
3. What month of the year has 28 days?
4. What is always in front of you but can't be seen?
5. What goes up but never comes down?
6. A man who is outside in the rain without an umbrella or hat didn't get a single hair on his head wet. Why?
7. The more of this there is, the less you see. What is it?
8. What has many keys but can't open a single lock?
9. What gets bigger when more is taken away?
10. Where does today come before yesterday?



**MUSIC is not merely
black dots on a
white page.**

1. Egg, 2. Candle, 3. All of them,
4. The Future, 5. Your Age, 6. He is
Bald, 7. Darkness, 8. A Piano, 9. A
Hole, 10. In the Dictionary

ANSWERS

Eunice

ABOUT

Founded: 1894

Prairie Cajun Capital of LA

Mayor: Scott A. Fontenot

2020 Population: 9,310

Number of Households

2006-2010: 3,522

Land Area: 5.13 square miles

Parishes: St. Landry & Acadia

Source: US Census Bureau



THINGS TO DO

Eunice Depot Museum - South C.C. Duson

One block east of the Liberty Center, Open Wed-Sat, 8:30am-4:30pm

Jean Lafitte Prairie Acadian Culture Center - 250 West Park Avenue,

TEMPORARILY CLOSED, National Park Service, U.S. Department of the Interior

The Liberty Center for the Performing Arts - Est. 1924, Corner of

Park Ave. & Second Streets, host to a wide variety of civic and cultural functions throughout the year [Currently closed for renovation]

Savoy Music Center Jam Session - Saturdays, 9:30-11:30am, 4413 Hwy 190

Cajun Music Hall of Fame and Museum - South C.C. Duson Drive, a block east of the Liberty Center, open Tuesday-Saturday

Eunice Mardi Gras Festival - February 9-13, 2024

World Championship Crawfish Etouffee Cookoff - March Annually

WEB: www.etouffecookoff.org - **SATURDAY (not Sunday)**, March 23, 2024

Fourth of July Celebration - Fireworks at Eunice Recreation Center, July 4, annually

CITY OF EUNICE

Mayor Scott A. Fontenot

Marion "Nootsie" Sattler,

Councilman at Large

COUNCIL MEMBERS

Connie Thibodeaux

Chad Andrepont

Germaine Simpson

Randy Reed

A wonderful place to live.
A musical place to visit.



WoodmenLifeSM

**Life Insurance Society, Maple Lodge 243
Eunice, LA**

Life Insurance • Annuities • Investments

Charles Stringer Phone: 337-344-4369
Recruiting Sales Manager

SUMMER

crossword



1 ↓ swimsuit, 1 → sun, 2. cocktail, 3. pineapple, 4. sunglasses, 5. fish, 6. cloud, 7. pineapple, 8. sunscreen, 9. jellyfish, 10. palm





CLECO

Energizing Your Tomorrow

Supporting the Arts!



EUNICE COMMUNITY CONCERT BAND & CHOIR