

# homed

Tools That Cater To Every Smile.

Dental Catalogue



## **Our Story**

At HUMED, our journey started with a keen awareness of a gap in the market for accessible, cost-effective, high-quality dental products from a Cypriot-based manufacturing company.

Recognizing this unmet need, HUMED was born, a vision brought to life.

The team's relentless dedication and innovative spirit ignited a transformation, aiming to reshape the dental industry for the better.

## **Our Scope and Product Line**

HUMED's scope is dedicated to serving the dental professionals and businesses of Cyprus, providing them with a wide array of high-quality dental products and solutions.

Our product range offers complete customization. We have the capability to produce and tailor any product to match our clients' distinctive needs. This involves making specific modifications, adjustments, and customizations.

We are committed to being the go-to source for all their dental product needs, ensuring that they can rely on us for exceptional products, reliable distribution, and unwavering support.

We pride ourselves on having a comprehensive selection of dental instruments, from diagnostic tools to treatment equipment, all designed to meet the highest standards of precision and functionality.

## Maintenance of Instruments

Although all our instruments are manufactured from the highest quality stainless steel, carefully crafted by skilled and experienced mechanics, conscientious maintenance of instruments is particularly important in order to guarantee a long lifetime for all recommended instruments.

Immediately after each use, instruments must be rinsed in warm water to remove any blood, tissues, mucus, and body fluids that remain on the instruments.

Ultrasonic cleaning is the most efficient way to clean extracting forceps, needle holders, scissors, and other types of instruments. The cleaning cycle should not exceed 10 minutes.

All instruments must be completely opened and submerged in the cleaning solution. Do not place instruments in the same container if they are made of different metals.

After washing instruments in an ultrasonic cleaner, never open or close instruments without first placing a drop of "surgical lubricant" in the opening and closure.

If ultrasonic cleaning is not possible, then special care must be taken while washing instruments. Rinse them under running water, ensuring all instrument parts are opened so that all residue is washed away. Only use a plastic brush with soft bristles.

After the cleaning and rinsing operations, instruments should be carefully dried. Now washed, dried, and oiled instruments are ready for sterilization.

## Sterilization of Instruments

Cleaning is not an alternative to sterilization. All instruments, having been carefully washed, dried, and oiled, should now be sterilized. The following precautions are necessary and should be considered during the sterilization process:

Place instruments in disposable pouches or sterilization packets and then in appropriate stainless steel instrument trays designed for sterilization. Sterilize the instruments for about 20 minutes at a temperature of 120°C (250°F).

Ensure that the pouch or packet is wide enough for instruments such as needle holders and hemostats so that the instruments can be sterilized in the unlocked position. Never lock an instrument during autoclaving; if it is locked, it will not be sterilized as steam cannot reach the metal-to-metal surfaces.

Avoid overloading the autoclave chamber. When the autoclave is too full, proper sterilization may not occur, and steam penetration may be inhibited.

When sterilizing different types of instruments, place heavy instruments on the bottom. Sensitive instruments, such as micro instruments, require utmost care, so always keep them on top.

After the autoclave process is complete, do not open the autoclave door quickly. Now is the time to run the dry cycle. If you do not run the dry cycle, cold moist air will rush into the chamber, causing spots and stains on instruments. In the case of a dry heat sterilizer, do not let the temperature exceed 180°C; prolonged exposure to high temperatures can cause discoloration and loss of temper or hardening of instruments.

Use a high-quality solution to kill specific bacteria and viruses. Also, some solutions are highly corrosive to the instruments and may require a soak time of up to 10 hours. The prolonged soak time and the chemical action can damage the instruments. Try your best to reduce the soak time and use corrosive inhibitors where recommended.



**GN-15-034**

Solid Handle for Mouth  
Mirrors



**GN-15-003**

Hollow Handle for Mouth  
Mirrors



**GN-19-004**

Semken Tissue Pliers 18cm



**GN-04-003**

Micro-Adison Tissue Pliers 12  
cm



**GN-04-004**

Meriam Cotton and  
Dressing Pliers 16 cm



**GN-04-005**

Suture Forceps Cotton  
and Dressing Pliers 16 cm





**GN-04-002**

College Cotton and  
Dressing Pliers



**GN-01-004**

UNC-15 Probe



**GN-01-005**

Nabers Probe



**GN-07-007**

Crown Remover



**GN-15-035**

Articulating Paper Holder



**GN-01-001**

Standard Scalpel Handle



**GN-01-002**

Thin Angled Scalpel Handle



**GN-14-001**

Dental Syringe 1.8ml



**GN-14-002**

Self-Aspirating Dental Syringe



**GN-15-008**

Explorer Double Ended



**GN-17-001**

Matrix Retainers  
Tofflemire-Senior



**GN-17-002**

Matrix Retainers  
Tofflemire-Junior



**GN-15-015**

Diamond shape Double  
Ended 3.5mm/2.5mm



**GN-15-016**

Flat Plastic Double Ended  
3mm



**GN-15-017**

Flat Plastic Double Ended  
2.5mm



**GN-15-018**

Flat Plastic Double Ended  
2mm



**GN-15-036**

Ball Shaped filling instrument  
double-ended 1.5/2mm



**GN-15-037**

Ball Shaped filling instrument  
double-ended 2/2.5mm



**GN-15-038**

Ball Shaped filling instrument  
double-ended 1/3mm



**GN-15-039**

Tear shaped and ball shape  
double-ended filling



**GN-15-040**

Condenser for Composite  
double-ended



**GN-15-041**

Enamel Hatchet



**GN-15-042**

Excavator



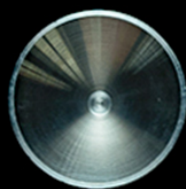
**GN-15-019**

Spatula Double Ended 8mm



**GN-18-001**

Amalgam Carrier  
double-ended



**GN-18-002**

Amalgam Well



**GN-06-001**

Titanium Filling Instrument



**GN-06-002**

Titanium Filling Instrument



**GN-06-003**

Titanium Filling Instrument



**GN-06-004**

Titanium Filling Instrument



**GN-06-005**

Titanium Filling Instrument



**GN-06-006**

Titanium Filling Instrument



**GN-06-007**

Titanium Filling Instrument



**GN-06-008**

Titanium Filling Instrument



**GN-06-009**

Titanium Filling Instrument



**GN-06-010**

Titanium Filling Instrument



**GN-02-001**

Metzenbaum Surgical  
Scissors Straight 16cm TC



**GN-02-002**

Metzenbaum Surgical  
Scissors Straight 18cm TC



**GN-02-003**

Metzenbaum Surgical  
Scissors Curved 14cm TC



**GN-02-004**

Metzenbaum-Fino Surgical  
Scissors Straight 14cm TC



**GN-02-005**

Metzenbaum-Fino Surgical  
Scissors Curved 14cm TC



**GN-02-006**

Locklin Surgical Scissors  
16cm TC





**GN-02-007**

Goldmann Fox Surgical  
Scissors Curved 13cm



**GN-03-002**

Metzenbaum Surgical  
Scissors Curved 16cm



**GN-05-001**

Crile-Wood Needle Holder  
15cm TC



**GN-02-008**

Iris Straight Scissors



**GN-03-001**

Noyes Surgical Scissors  
Straight 15cm



**GN-20-002**

Micro Instruments TC  
Scissors Straight 14cm



**GN-20-003**

Micro Instruments TC  
Scissors Curved 14cm



**GN-20-001**

Micro Instruments TC Needle  
Holder Straight 14cm



**GN-03-003**

Castroveljo (with lock)  
Needle Holders 14cm



**GN-12-001**

Upper Central and Canines  
Extracting Forceps



**GN-12-007**

Upper Incisors and Canines  
Extracting Forceps



**GN-12-002**

Upper Premolars Extracting  
Forceps



**GN-12-004**

Upper Molars Either side  
Extracting Forceps



**GN-12-006**

Upper Root Extracting  
Forceps



**GN-12-009**

Upper Root Extracting  
Forceps



**GN-12-003**

Lower Premolars Extracting  
Forceps



**GN-12-010**

Lower Molars Extracting  
Pediatric Forceps



**GN-12-005**

Lower Root Extracting  
Forceps



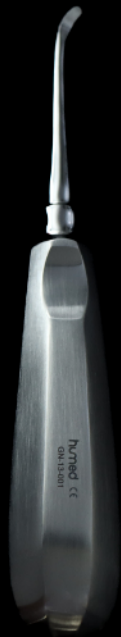
**GN-12-012**

Upper Premolars Extracting  
Pediatric Forceps



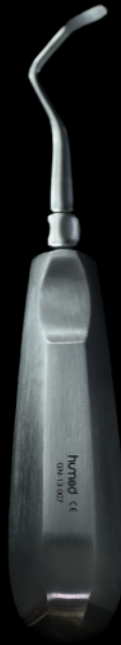
**GN-12-011**

Upper Roots Extracting  
Pediatric Forceps



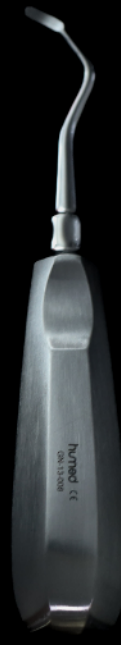
**GN-13-001**

Miller Straight Root  
Elevators



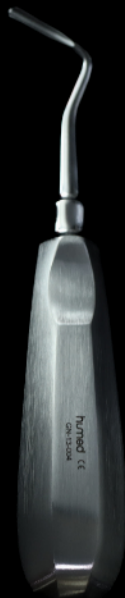
**GN-13-007**

Miller L Curved Root  
Elevators



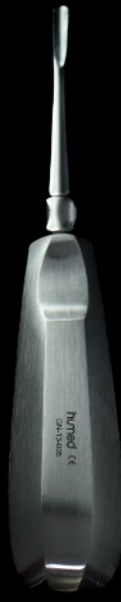
**GN-13-008**

Miller R Curved Root  
Elevators



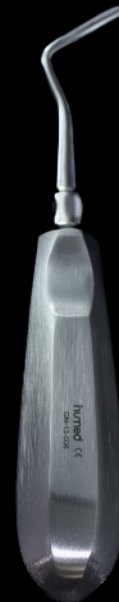
**GN-13-004**

Apical L Curved Root  
Elevators



**GN-13-005**

Apical Straight Root  
Elevators



**GN-13-006**

Apical R Curved Root  
Elevators



**GN-13-002**

Cryer L Straight Long Small  
Head Root Elevators



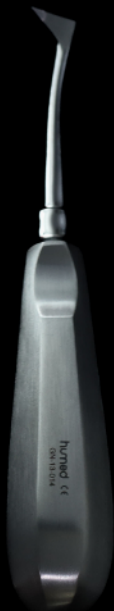
**GN-13-003**

Cryer R Straight Long Small  
Head Root Elevators



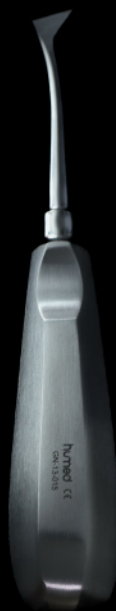
**GN-13-013**

Cryer L Straight Long Big  
Head Root Elevators



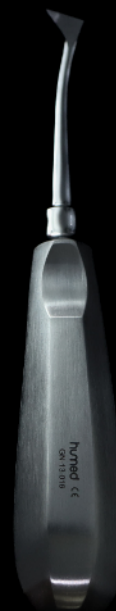
**GN-13-014**

Cryer R Straight Long Big  
Head Root Elevators



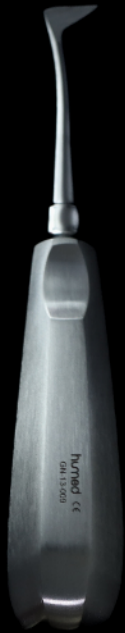
**GN-13-015**

Cryer L Straight Short Root  
Elevators



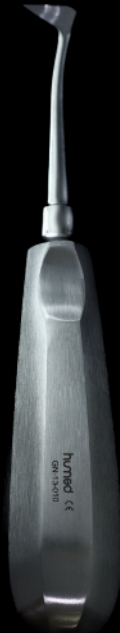
**GN-13-016**

Cryer R Straight Short Root  
Elevators



**GN-13-009**

Seldin L Straight Long Root  
Elevators



**GN-13-010**

Seldin R Straight Long Root  
Elevators



**GN-13-011**

Seldin L Straight Short Root  
Elevators



**GN-13-012**

Seldin R Straight Short Root  
Elevators



**GN-13-018**

Heidbrink L Curved Root  
Elevators



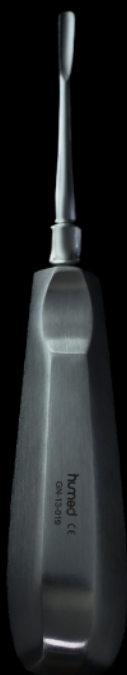
**GN-13-019**

Heidbrink R Curved Root  
Elevators



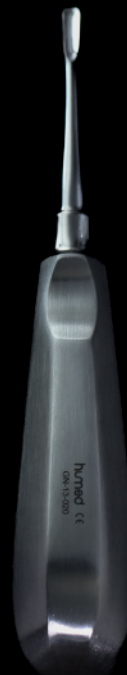
**GN-13-017**

Heidbrink Straight Root  
Elevators



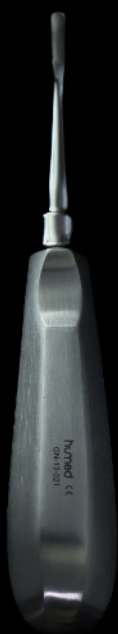
**GN-13-019**

Luxating Elevator Straight  
3mm



**GN-13-020**

Luxating Elevator Curved  
3mm



**GN-13-021**

Luxating Elevator Inverted  
Curved 3mm



**GN-13-022**

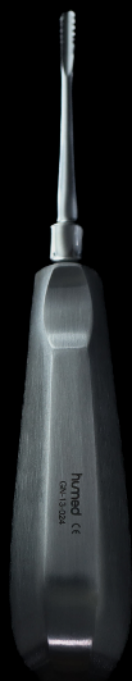
Luxating Elevator Contra  
Angled 3mm



**GN-13-023**

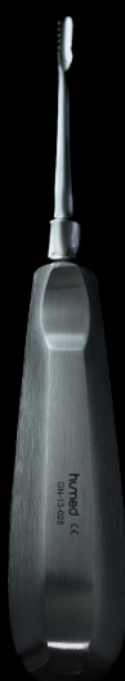
Luxating Elevator Dual Edge  
Straight 3mm





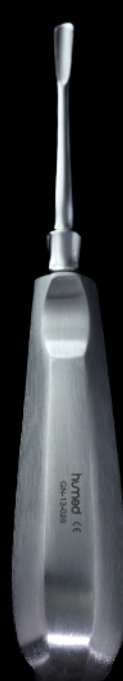
**GN-13-024**

Luxating Elevator Straight  
with Serration 3mm



**GN-13-025**

Luxating Elevator Curved  
with Serration 3mm



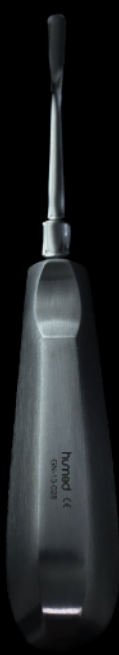
**GN-13-026**

Luxating Elevator Straight  
4mm



**GN-13-027**

Luxating Elevator Curved  
4mm



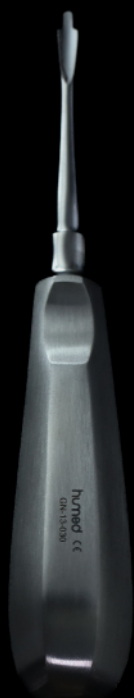
**GN-13-028**

Luxating Elevator Inverted  
Curved 4mm



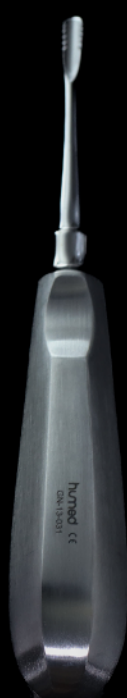
**GN-13-029**

Luxating Elevator Contra  
Angled 4mm



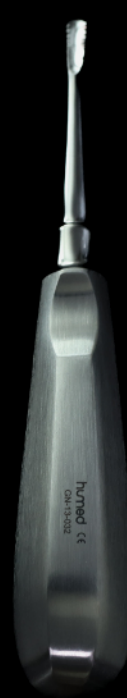
**GN-13-030**

Luxating Elevator Dual Edge  
Straight 4mm



**GN-13-031**

Luxating Elevator Straight  
with Serration 4mm



**GN-13-032**

Luxating Elevator Curved  
with Serration 4mm



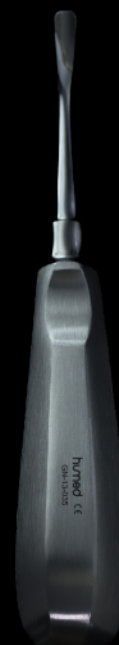
**GN-13-033**

Luxating Elevator Straight  
5mm



**GN-13-034**

Luxating Elevator Curved  
5mm



**GN-13-035**

Luxating Elevator Inverted  
Curved 5mm



**GN-15-009**

Gracey Curette 5/6



**GN-15-010**

Gracey Curette 7/8



**GN-15-011**

Gracey Curette 9/10



**GN-15-012**

Gracey Curette 11/12



**GN-15-013**

Gracey Curette 13/14



**GN-15-014**

Gracey Curette 15/16



**GN-15-020**

Columbia Double Ended  
Angled



**GN-15-021**

Columbia Double Ended  
Rounded



**GN-15-023**

L Orban



**GN-15-024**

R Orban



**GN-15-025**

Columbia Double Ended  
Optuse



**GN-15-026**

Columbia Double Ended  
Acute



**GN-15-022**

Towner Jaquette Double  
Ended



**GN-15-033**

Goldman Fox/Williams



**GN-15-032**

Parodontology-SET Intro Kit



**GN-23-013**

Bone Curette  
Hemingway Double



**GN-23-014**

Granulate Plugger Double  
Ended 6/5mm



**GN-23-015**

Bone Compactor 3/4mm



**GN-23-016**

Bone Curette Lucas Double  
Ended 2mm



**GN-23-017**

Bone Curette Lucas  
Double Ended 4mm



**GN-23-010**

Sinus-Lift Elevators Bone  
Scraper 5/7mm



**GN-23-011**

Sinus-Lift Elevators  
Orban Gingivectomy



**GN-23-012**

Sinus-Lift Elevators Palti  
6/10.5mm



**GN-15-002**

Pichard Periosteal Elevator



**GN-15-001**

Molt Periosteal Elevator



**GN-07-005**

Molt 5/6 Periosteal  
instrument 18cm



**GN-07-006**

Molt 4/5 Periosteal  
Instrument 18cm



**GN-23-005**

Periosteal Elevator Iglhaut



**GN-23-003**

Periosteal Elevator Palti





**GN-23-001**

Periosteal Elevator Molt



**GN-23-002**

Periosteal Elevator Molt 5/6



**GN-23-004**

Periosteal Elevator Prichard  
Combination of Elevator and



**GN-11-001**

Lucas Bone Curette 2mm  
diameter tip



**GN-11-002**

Lucas Bone Curette 3mm  
diameter tip



**GN-10-001**

Miller Bone File



**GN-15-027**

P.K. Thomas Thin Tip Double Ended



**GN-15-028**

P.K. Thomas Thin Tip Double Ended



**GN-15-029**

P.K. Thomas Diamond shape Tip Double Ended



**GN-15-030**

P.K. Thomas Spear Tip Double Ended



**GN-15-031**

P.K. Thomas Pointy Tip Double Ended Me



**GN-15-043**

Wax Carver



**GN-07-001**

Roux Retractor 15cm  
(26x36mm)



**GN-07-003**

University of Minnesota  
Retractor 14cm



**GN-007-002**

Universal Retractor 17cm



**GN-17-005**

Clamp Remover Ivory 17cm



**GN-17-006**

Puncher Ainsworth 6cm



**GN-017-007**

Frame Young 105x95cm



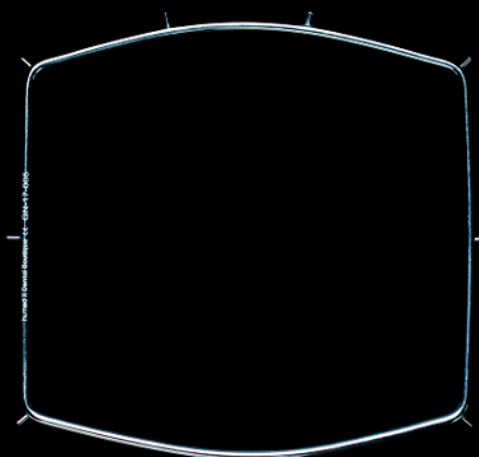
**GN-017-003**

Frame Senior



**GN-17-004**

Rubber dam frame  
rounded Small



**GN-17-008**

Rubber dam frame  
rounded Big



**Clamp 30**



**Clamp 31**



**Clamp 138**



**Clamp 139**



**Clamp 205**



**Clamp 206**



**Clamp 207**



**Clamp 208**



**Clamp 210**



**Clamp 211**



**GN-18-002**

Endo Box



**GN-18-005**

Laboratory Bur Holder  
94x62mm



**GN-18-004**

Universal Tray  
230x155x30mm



**GN-18-006**

Bur holder for high-speed  
and low-speed





**GN-09-001**

Metal Tray U3



**GN-09-002**

Metal Tray U4



**GN-09-003**

Metal Tray U5



**GN-09-004**

Metal Tray L3



**GN-09-005**

Metal Tray L4



**GN-09-006**

Metal Tray L5