

hamed

Tools That Cater To Every Smile.

Dental Catalogue



Our Story

At HUMED, our journey started with a keen awareness of a gap in the market for accessible, cost-effective, high-quality dental products from a Cypriot-based manufacturing company.

Recognizing this unmet need, HUMED was born, a vision brought to life.

The team's relentless dedication and innovative spirit ignited a transformation, aiming to reshape the dental industry for the better.

Our Scope and Product Line

HUMED's scope is dedicated to serving the dental professionals and businesses of Cyprus, providing them with a wide array of high-quality dental products and solutions.

Our product range offers complete customization. We have the capability to produce and tailor any product to match our clients' distinctive needs. This involves making specific modifications, adjustments, and customizations.

We are committed to being the go-to source for all their dental product needs, ensuring that they can rely on us for exceptional products, reliable distribution, and unwavering support.

We pride ourselves on having a comprehensive selection of dental instruments, from diagnostic tools to treatment equipment, all designed to meet the highest standards of precision and functionality.

Maintenance of Instruments

Although all our instruments are manufactured from the highest quality stainless steel, carefully crafted by skilled and experienced mechanics, conscientious maintenance of instruments is particularly important in order to guarantee a long lifetime for all recommended instruments.

Immediately after each use, instruments must be rinsed in warm water to remove any blood, tissues, mucus, and body fluids that remain on the instruments.

Ultrasonic cleaning is the most efficient way to clean extracting forceps, needle holders, scissors, and other types of instruments. The cleaning cycle should not exceed 10 minutes.

All instruments must be completely opened and submerged in the cleaning solution. Do not place instruments in the same container if they are made of different metals.

After washing instruments in an ultrasonic cleaner, never open or close instruments without first placing a drop of "surgical lubricant" in the opening and closure.

If ultrasonic cleaning is not possible, then special care must be taken while washing instruments. Rinse them under running water, ensuring all instrument parts are opened so that all residue is washed away. Only use a plastic brush with soft bristles.

After the cleaning and rinsing operations, instruments should be carefully dried. Now washed, dried, and oiled instruments are ready for sterilization.

Sterilization of Instruments

Cleaning is not an alternative to sterilization. All instruments, having been carefully washed, dried, and oiled, should now be sterilized. The following precautions are necessary and should be considered during the sterilization process:

Place instruments in disposable pouches or sterilization packets and then in appropriate stainless steel instrument trays designed for sterilization. Sterilize the instruments for about 20 minutes at a temperature of 120°C (250°F).

Ensure that the pouch or packet is wide enough for instruments such as needle holders and hemostats so that the instruments can be sterilized in the unlocked position. Never lock an instrument during autoclaving; if it is locked, it will not be sterilized as steam cannot reach the metal-to-metal surfaces.

Avoid overloading the autoclave chamber. When the autoclave is too full, proper sterilization may not occur, and steam penetration may be inhibited.

When sterilizing different types of instruments, place heavy instruments on the bottom. Sensitive instruments, such as micro instruments, require utmost care, so always keep them on top.

After the autoclave process is complete, do not open the autoclave door quickly. Now is the time to run the dry cycle. If you do not run the dry cycle, cold moist air will rush into the chamber, causing spots and stains on instruments. In the case of a dry heat sterilizer, do not let the temperature exceed 180°C; prolonged exposure to high temperatures can cause discoloration and loss of temper or hardening of instruments.

Use a high-quality solution to kill specific bacteria and viruses. Also, some solutions are highly corrosive to the instruments and may require a soak time of up to 10 hours. The prolonged soak time and the chemical action can damage the instruments. Try your best to reduce the soak time and use corrosive inhibitors where recommended.



GN-15-034

Solid Handle for Mouth
Mirrors



GN-15-003

Hollow Handle for Mouth
Mirrors



GN-19-004

Semken Tissue Pliers 18cm



GN-04-003

Micro-Adison Tissue Pliers 12
cm



GN-04-004

Meriam Cotton and
Dressing Pliers 16 cm



GN-04-005

Suture Forceps Cotton
and Dressing Pliers 16 cm



GN-14-001

Dental Syringe 1.8ml



GN-01-001

Standard Scalpel Handle



GN-01-002

Thin Angled Scalpel Handle



GN-07-007

Crown Remover



GN-02-001

Metzenbaum Surgical
Scissors Straight 16cm TC



GN-02-002

Metzenbaum Surgical
Scissors Straight 18cm TC



GN-02-003

Metzenbaum Surgical
Scissors Curved 14cm TC



GN-02-004

Metzenbaum-Fino Surgical
Scissors Straight 14cm TC



GN-02-005

Metzenbaum-Fino Surgical
Scissors Curved 14cm TC



GN-02-006

Locklin Surgical Scissors
16cm TC



GN-02-007

Goldmann Fox Surgical
Scissors Curved 13cm



GN-03-002

Metzenbaum Surgical
Scissors Curved 16cm



GN-05-001

Crile-Wood Needle Holder
15cm TC



GN-03-001

Noyes Surgical Scissors
Straight 15cm



GN-20-002

Micro Instruments TC
Scissors Straight 14cm



GN-20-003

Micro Instruments TC
Scissors Curved 14cm



GN-20-001

Micro Instruments TC Needle
Holder Straight 14cm



GN-03-003

Castroveiijo (with lock)
Needle Holders 14cm



GN-12-001

Upper Central and Canines
Extracting Forceps



GN-12-007

Upper Incisors and Canines
Extracting Forceps



GN-12-002

Upper Premolars Extracting
Forceps



GN-12-004

Upper Molars Either side
Extracting Forceps



GN-12-006

Upper Root Extracting
Forceps



GN-12-009

Upper Root Extracting
Forceps



GN-12-003

Lower Premolars Extracting
Forceps



GN-12-010

Lower Molars Extracting
Pediatric Forceps



GN-12-005

Lower Root Extracting
Forceps



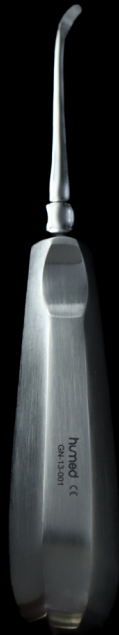
GN-12-012

Upper Premolars Extracting
Pediatric Forceps



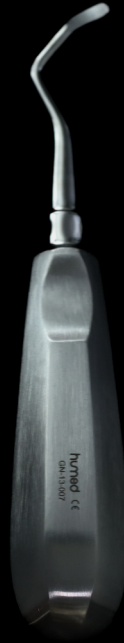
GN-12-011

Upper Roots Extracting
Pediatric Forceps



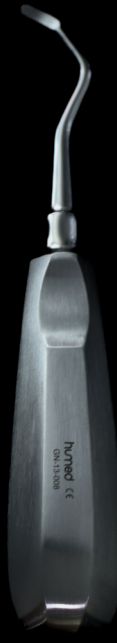
GN-13-001

Miller Straight Root
Elevators



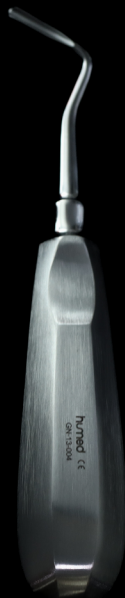
GN-13-007

Miller L Curved Root
Elevators



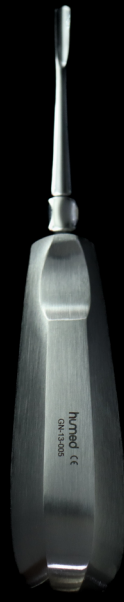
GN-13-008

Miller R Curved Root
Elevators



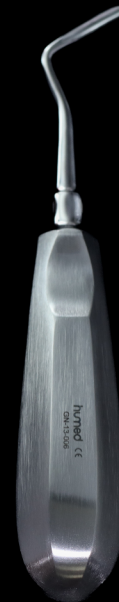
GN-13-004

Apical L Curved Root
Elevators



GN-13-005

Apical Straight Root
Elevators



GN-13-006

Apical R Curved Root
Elevators



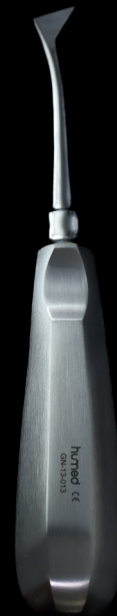
GN-13-002

Cryer L Straight Long Small
Head Root Elevators



GN-13-003

Cryer R Straight Long Small
Head Root Elevators



GN-13-013

Cryer L Straight Long Big
Head Root Elevators



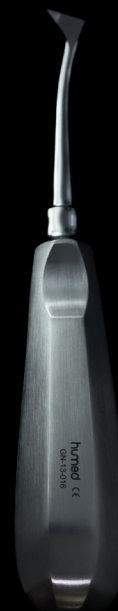
GN-13-014

Cryer R Straight Long Big
Head Root Elevators



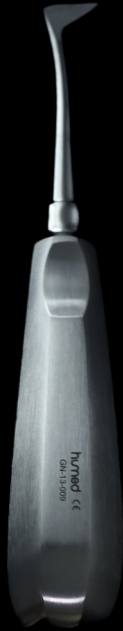
GN-13-015

Cryer L Straight Short Root
Elevators



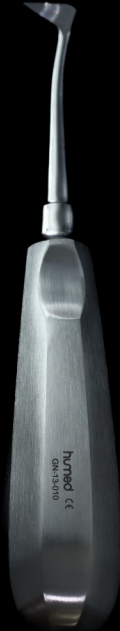
GN-13-016

Cryer R Straight Short Root
Elevators



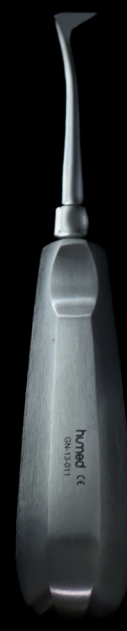
GN-13-009

Seldin L Straight Long Root
Elevators



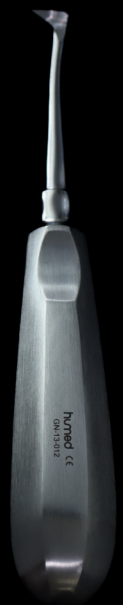
GN-13-010

Seldin R Straight Long Root
Elevators



GN-13-011

Seldin L Straight Short Root
Elevators



GN-13-012

Seldin R Straight Short Root
Elevators



GN-13-018

Heidbrink L Curved Root
Elevators



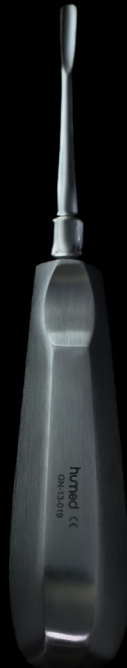
GN-13-019

Heidbrink R Curved Root
Elevators



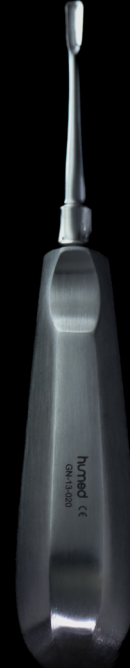
GN-13-017

Heidbrink Straight Root
Elevators



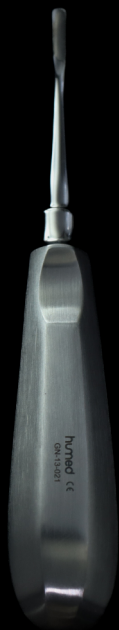
GN-13-019

Luxating Elevator Straight
3mm



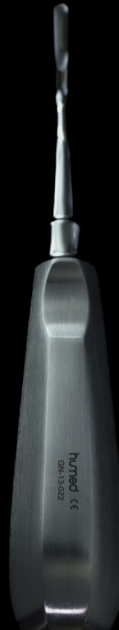
GN-13-020

Luxating Elevator Curved
3mm



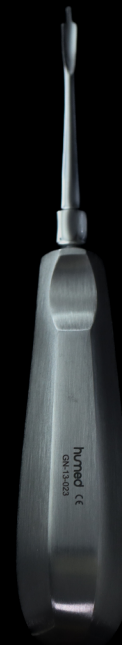
GN-13-021

Luxating Elevator Inverted
Curved 3mm



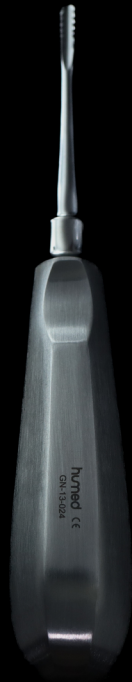
GN-13-022

Luxating Elevator Contra
Angled 3mm



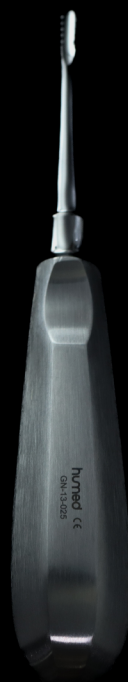
GN-13-023

Luxating Elevator Dual Edge
Straight 3mm



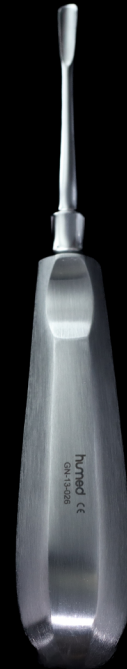
GN-13-024

Luxating Elevator Straight
with Serration 3mm



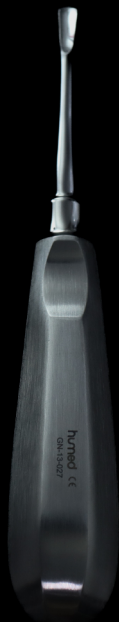
GN-13-025

Luxating Elevator Curved
with Serration 3mm



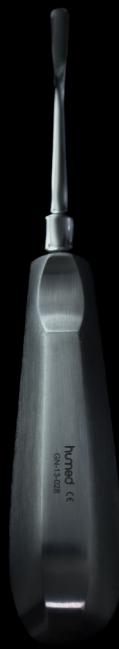
GN-13-026

Luxating Elevator Straight
4mm



GN-13-027

Luxating Elevator Curved
4mm



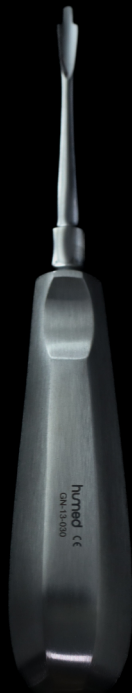
GN-13-028

Luxating Elevator Inverted
Curved 4mm



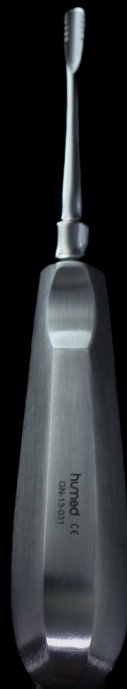
GN-13-029

Luxating Elevator Contra
Angled 4mm



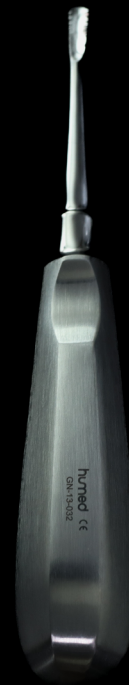
GN-13-030

Luxating Elevator Dual Edge
Straight 4mm



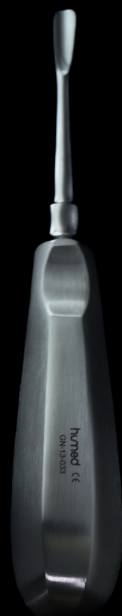
GN-13-031

Luxating Elevator Straight
with Serration 4mm



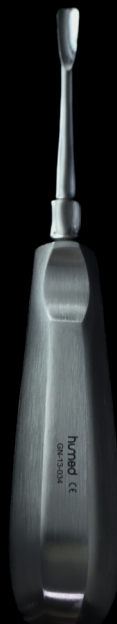
GN-13-032

Luxating Elevator Curved
with Serration 4mm



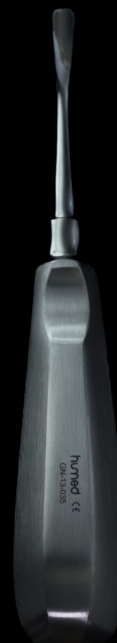
GN-13-033

Luxating Elevator Straight
5mm



GN-13-034

Luxating Elevator Curved
5mm



GN-13-035

Luxating Elevator Inverted
Curved 5mm



GN-15-009

Gracey Curette 5/6



GN-15-010

Gracey Curette 7/8



GN-15-011

Gracey Curette 9/10



GN-15-012

Gracey Curette 11/12



GN-15-013

Gracey Curette 13/14



GN-15-014

Gracey Curette 15/16



GN-15-020

Columbia Double Ended
Angled



GN-15-021

Columbia Double Ended
Rounded



GN-15-023

L Orban



GN-15-024

R Orban



GN-15-025

Columbia Double Ended
Optuse



GN-15-026

Columbia Double Ended
Acute



GN-15-008

Explorer Double Ended



GN-15-022

Towner Jaquette Double Ended



GN-15-033

Goldman Fox/Williams



GN-15-032

Parodontology-SET Intro Kit



GN-23-013

Bone Curette
Hemingway Double



GN-23-014

Granulate Plugger Double
Ended 6/5mm



GN-23-015

Bone Compactor 3/4mm



GN-23-016

Bone Curette Lucas Double
Ended 2mm



GN-23-017

Bone Curette Lucas
Double Ended 4mm



GN-23-010

Sinus-Lift Elevators Bone
Scraper 5/7mm



GN-23-011

Sinus-Lift Elevators
Orban Gingivectomy



GN-23-012

Sinus-Lift Elevators Palti
6/10.5mm



GN-15-019

Spatula Double Ended 8mm



GN-15-002

Pichard Periosteal Elevator



GN-15-001

Molt Periosteal Elevator



GN-07-005

Molt 5/6 Periosteal
instrument 18cm



GN-07-006

Molt 4/5 Periosteal
Instrument 18cm



GN-23-005

Periosteal Elevator Iglhault



GN-23-003

Periosteal Elevator Palti



GN-23-001

Periosteal Elevator Molt



GN-23-002

Periosteal Elevator Molt 5/6



GN-23-004

Periosteal Elevator Prichard
Combination of Elevator and



GN-11-001

Lucas Bone Curette 2mm
diameter tip



GN-11-002

Lucas Bone Curette 3mm
diameter tip



GN-10-001

Miller Bone File



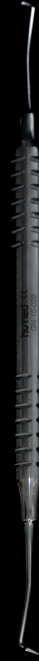
GN-15-027

P.K Thomas Thin Tip Double Ended



GN-15-028

P.K Thomas Thin Tip Double Ended



GN-15-029

P.K Thomas Diamond shape Tip Double Ended



GN-15-030

P.K Thomas Spear Tip Double Ended



GN-15-031

P.K Thomas Pointy Tip Double Ended Me



GN-07-001

Roux Retractor 15cm
(26x36mm)



GN-07-003

University of Minnesota
Retractor 14cm



GN-007-002

Universal Retractor 17cm



GN-17-001

Matrix Retainers
Tofflemire-Senior



GN-17-002

Matrix Retainers
Tofflemire-Junior



GN-15-015

Diamond shape Double
Ended 3.5mm/2.5mm



GN-15-016

Flat Plastic Double Ended
3mm



GN-15-017

Flat Plastic Double Ended
2.5mm



GN-15-018

Flat Plastic Double Ended
2mm



GN-17-005

Clamp Remover Ivory 17cm



GN-17-006

Puncher Ainsworth 6cm



GN-017-007

Frame Young 105x95cm



Clamp 30



Clamp 31



Clamp 138



Clamp 139



Clamp 205



Clamp 206



Clamp 207



Clamp 208



Clamp 210



Clamp 211

TheHumed.com



GN-18-002

Endo Box



GN-18-005

Bur Holder 94x62mm



GN-18-004

Universal Tray
230x155x30mm