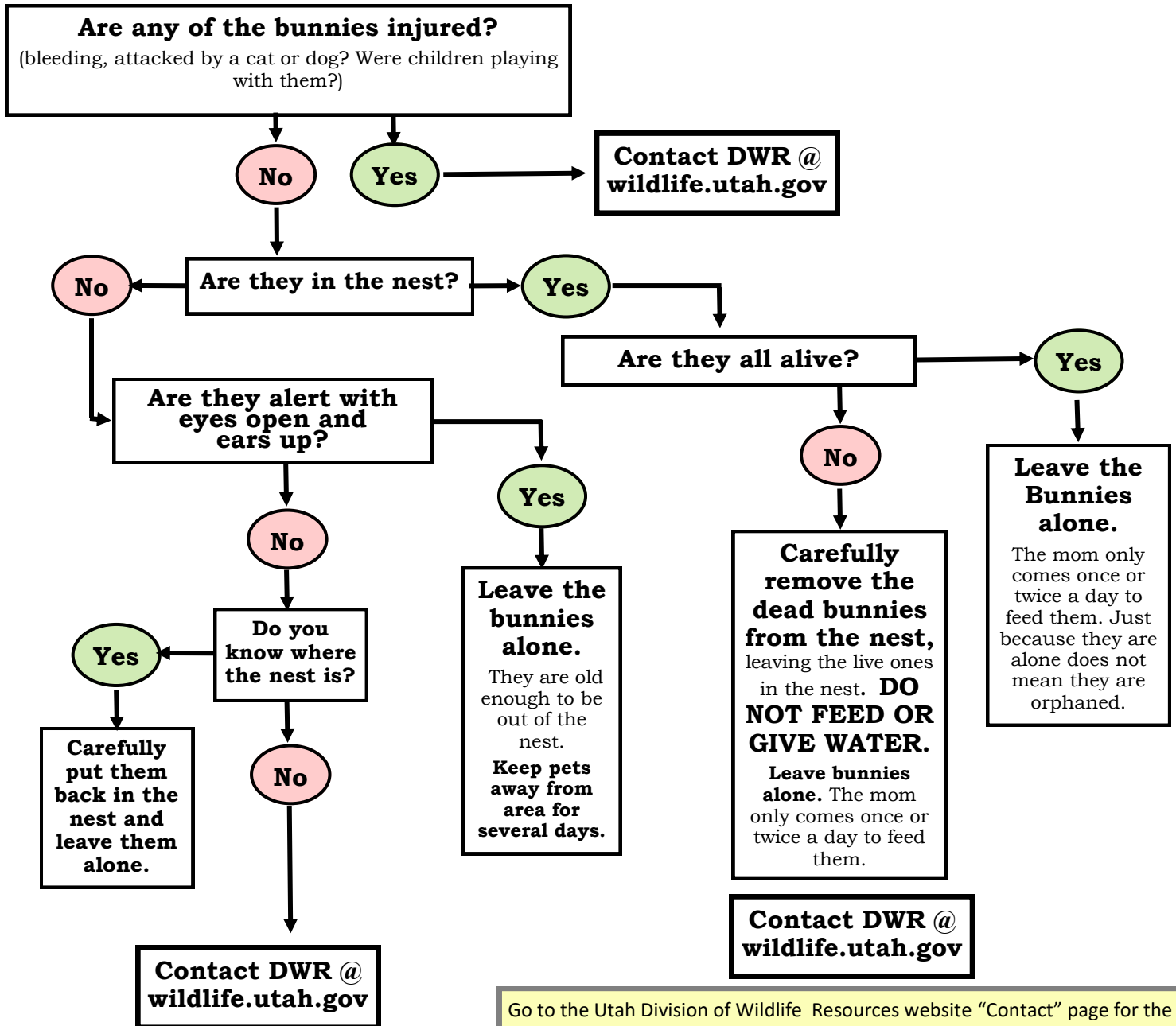


# I Found a Nest of Baby Bunnies, **NOW WHAT?!**

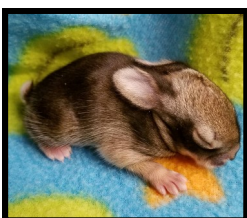
Increasingly, wild rabbits and hares are living near our homes and work places. Sometimes they need help and sometimes they do not, but how can you tell? This chart should help, but if you are ever in doubt, please call a licensed rehabber first, since the baby's best chance of survival is normally with its mother—This is important, because the stress of being handled can **KILL** a wild rabbit or hare.



Go to the Utah Division of Wildlife Resources website "Contact" page for the office nearest you for more information.  
[www.wildlife.utah.gov/about-us/contact-dwr](http://www.wildlife.utah.gov/about-us/contact-dwr)

For humane purposes, if an animal has a severe injury, contacting the DWR is currently the best option but understand that they will not be able to help in many situations due to the high volume and types of injuries being out of their control.

Please visit our website for ways to help us raise the funds to relocate and get back up and running as we have for the past 13+ years—thank you!  
[WWW.WRCNU.ORG](http://WWW.WRCNU.ORG)



Left photo—eyes closed ears laid back, put back in nest  
Right photo—Eyes open and ears UP, leave them alone