

Summer
2022



Number of Wildlife Patients
Treated since 2009: > 32,700

It's Here: HPAI!

We have the Highly Pathogenic Avian Influenza (HPAI) strain H5N1 here in Utah, as well as in 35 other states. According to the CDC, over 40,000,000 birds are affected to date. The Utah Department of Agriculture and Food (UDAF) has required the culling of more than a million chickens, as we understand, which can be expected to have a huge economic effect on both our poultry farmers and the consumer.

Utah is experiencing an outbreak of *Highly Pathogenic Avian Influenza*. The risk to humans is low; however for birds it is extremely contagious with a high mortality rate. For bio-security purposes and to protect our patients, we cannot have the public in our building.

We are currently accepting patients that have been **pre-registered**.

If you need assistance or are here with an animal,
please call 801-814-7888.

When you arrive at WRCNU, this is the signage you will find on all of our entrance doors.

facility. We have had to make the very difficult decision this year NOT to take in any waterfowl or shorebirds due to the high likelihood they will have the virus. We are testing new arrivals and moving them through a 4-stage quarantine process before declaring them safe to add to the general patient population.

We ask that you call us before bringing in any animal so when you arrive you will know what to expect and we can transfer the animals as quickly and efficiently as possible.

NOTE TO BIRD OWNERS: be vigilant in watching for symptoms in your flocks. Some symptoms include: high death rates, nasal discharge, decreased appetite and water consumption, and poor coordination (stumbling, falling over, etc.).

If you experience any of these signs in your birds, please contact the state veterinarian's office immediately at statevet@utah.gov

WRCNU is under strict quarantine conditions to protect the animals already in our care, as well as to ensure the safe transfer of new patients from the rescuer to treatment in our



WRCNU Wildlife Specialists in full protective gear while treating several quarantined patients.

The following information is from the *Davis Journal*, June 9, 2022, by Tom Haraldsen:

"Cases of Highly Pathogenic Avian Influenza (HPAI) have now been confirmed in six Utah counties, serving as a warning to anyone with chickens or other birds to be on the lookout for symptoms. As of May 30, 10 wild birds have tested positive of avian flu in Cache, Weber, Salt Lake, Utah, Tooele and Carbon counties. No cases had been reported in Davis County as of that date.

The Utah Department of Agriculture and Food said HPAI is highly contagious and could spread to other parts of the state, including to Davis County.

In addition to chickens, other birds who've been infected include Canada geese, great horned owls, hawks, pelicans, turkey vultures and ducks. Test results from other dead birds are currently pending.

(State Vet) Taylor said the UDAF is continuing to work with federal, state, and local partners on the response plan and all infected birds will be depopulated. Additional surveillance and testing will be done in the surrounding area to help prevent further spread of HPAI.

(Continued on next page)

(HPAI continued) ... Songbirds are not typically affected by avian flu, so people shouldn't have to remove bird feeders unless they also have backyard chickens or domestic ducks, which are susceptible to the virus. However, it's always recommended to regularly clean bird feeders and baths.

According to the U.S. Centers for Disease Control and Prevention, the recent HPAI detections do not present an immediate public health concern. No human cases of this strain of HPAI have been detected in the United States. As a reminder, the proper handling and cooking of all poultry and eggs to an internal temperature of 165°F is recommended as a general food safety precaution.

Anyone involved with poultry production, from the small backyard to the large commercial producer, should review their biosecurity activities to assure the health of their birds."

We will get through this too and we truly appreciate your help and support!

The WRCNU Education Booth UP and RUNNING Again!



Earth Day Birthday Celebration
at the USU Ogden Botanical Gardens



Wasatch Widgeons Outdoor Youth Fair
at Ft. Buenaventura

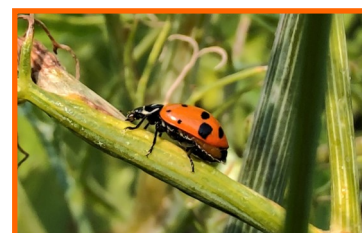
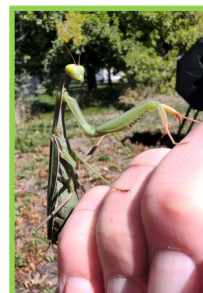
WRCNU's E-Newsletter

Coming in Fall of 2022, we will try our hand at an emailed newsletter. This version will not duplicate our three seasonal hardcopies. Right now we are thinking of just a short monthly newsy/educational theme based on current events and patients with links to other interesting and related topics.

If you are interested in being added to this new adventure, please send your name and email address to newsletter@wrcnu.org

We hope to have the expeditionary first E-Blast out in October/November.

Please consider reducing or (better) eliminating use of chemicals in your yard. Pesticides, Herbicides and Fertilizers kill beneficial animals (including birds) that will help you naturally remove pests.



Some 2022 Wildlife Patients



Clockwise starting at top left:

- Two photos of a “pre-HPAI” American White Pelican released at the Bear River Migratory Bird Refuge.

- A young Cottontail Rabbit is released back into the wild. (bottom right)

- A Pine Siskin shortly after its release

- And finally, a non-releasable “female” Red-tailed Hawk (diagnosed as blind in one eye) is now in her new forever home at Utah’s Hogle Zoo.



New “WRCNU Sustainer” Category Announced!

We are extremely encouraged by the amazing and growing support that YOU, our community, has shown over the past thirteen (13) years since we began serving Northern Utah and beyond. As a Monthly Sustainer, you will already be familiar with our previous seven (7) Sustainer Categories.

Due to increased support at the upper levels, we have decided to add a new TOP Sustainer Category for those members donating \$10,000 and higher. While we don't have a lot at this level, we do feel that these individuals deserve to be highlighted separately for their very important contributions to our basic mission, to **REHABILITATE, EDUCATE, AND RELEASE!**

We were lucky to recruit the talented Kestin McClain, a past WRCNU volunteer, to produce this piece of art and are honored to share it with you today.



Bald Eagle level:
for donations of \$10,000 and up
annually

Kestin did a great job of producing the head of an American Bald Eagle to go along with the previous category level symbols produced earlier by the amazing artist and WRCNU Cofounder Amber Hansen.

The Bald Eagle is uniquely Kestin's, but it fits in very nicely with our current symbols and we are extremely happy to add it to our collection.

THANK YOU, Kestin!

If you are interested in becoming a Monthly (or Annual) sustainer, you will find more information on the next page and on our website.



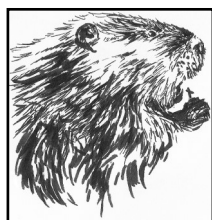
Chickadee level:
Minimum of \$8/Month
or \$100-\$179 Annually
(27¢ a day)



Flying Squirrel level:
Minimum of \$15/Month
or \$180-\$239 Annually
(50¢ a day)



Raven level:
Minimum of \$20/Month
or \$240-\$419 Annually
(67¢ a day)



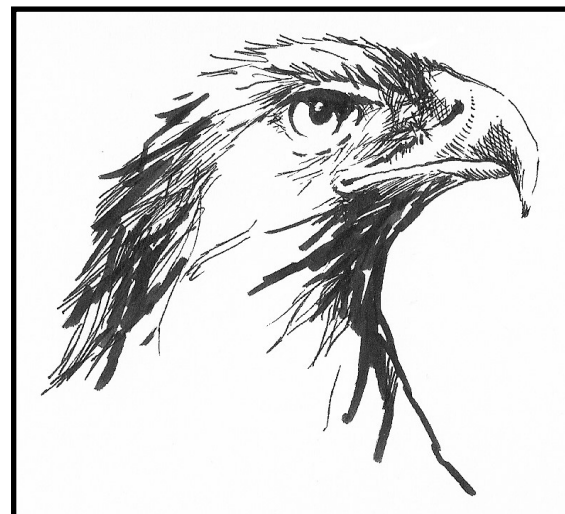
NA Beaver level:
Minimum of \$35/Month
or \$420-\$599 Annually
(\$1.17 a day)



Great Horned Owl level:
Minimum of \$50/Month
or \$600-\$1,199 Annually
(\$1.67 a day)



Osprey level:
Minimum of \$100/Month
or \$1,200-\$4,999 Annually
(\$3.33 a day)

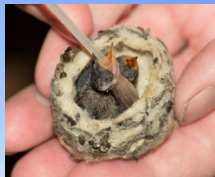


Golden Eagle level:
Minimum of \$417/Month
or \$5,000-\$9,999 Annually



@ Wildlife Rehabilitation Center of Northern





Join our GROWING group of WRCNU Sustainers

In uncertain times, you can be part of the growing number of supporters who help remove the uncertainty. YOU can become a WRCNU Sustainer. Here's how it works:

Monthly donations. Starting as low as \$8/month to *"The sky is the limit!"* Make these donations by check, credit/debit card or through your PayPal account.

The Easiest Way? ... is Through Automatic Recurring Payments! You'll never miss it!

We are happy to help you setup Automatic Recurring credit/debit card donations . OR ... you may setup recurring donations through your bank's "Bill Pay" account. Once set up, your bank will send us a check each month. Yet another way, is to setup recurring payments through your PayPal account.

For more Info go to www.wrcnu.org/become-a-sustainer or email us at info@wrcnu.org

Mailing address (mail ONLY): 3127 N Pelican Drive, Farr West, UT 84404

- Correspondence or Donation checks by mail should be addressed to *Pelican Drive* please

Physical address: 1490 Park Blvd, Ogden, UT 84401

- Injured wildlife deliveries; In Person Cash, Check or Credit Donations must come to *Park BLVD*

Website (Credit/PayPal) Donations at: WRCNU.ORG

@ WRCNU1



TURN YOUR USED CAR INTO SUPPORT

DONATE YOUR VEHICLE



We accept cars, trucks, motorcycles, RVs, boats, and more.



To start the vehicle donation process:

Find the "Cars" link at <https://wrcnu.org/donate>

<https://careasy.org/wildlife-rehabilitation-center-of-northern-utah>

Or call (855) 500-RIDE (7433)

WRCNU Now On VENMO!

Severe Drought Conditions

As we did last year, WRCNU continues to take its water consumption seriously.

While adjusting our sprinkler system, we noticed this chubby Tiger Salamander had taken up residence in one of our solenoid boxes. Animals need water too and this little guy found an area on the property that provided both food as well as the moisture “he” requires to sustain life.

Utah is the second driest state in the U.S. and we must not take our water for granted, but instead become serious about conservation of this very precious resource.

Visit www.SlowTheFlow.org for more information on tips to live in a desert state.



Human Imprinted Yellow-bellied Marmot Heads to Hogle Zoo



RETURN SERVICE REQUESTED

Wildlife Rehabilitation Center
of Northern Utah
3127 N Pelican Drive
Farr West, UT 84404
www.WRCNU.ORG



Non-Profit
US Postage
PAID
Permit No. 181
Ogden, UT