



ROTO 40.18 S



ROTO 40.18 S the state-of-the art model that the construction and rental sector expected

The technological added value that ensures compact design, maximum performance and productivity.
The most compact model in its category!



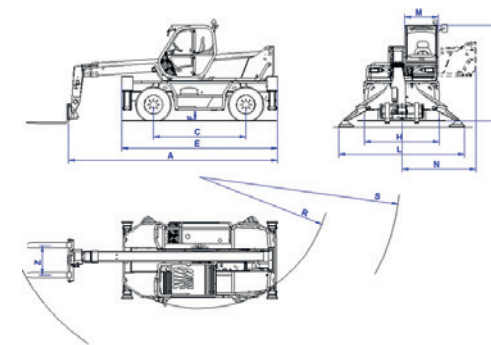
ROTO 40.18 S competes the ROTO 400° family. It has been conceived to get the maximum compactness and performance. It is equipped with auto-stabilization and suspended axle systems adopted in base machine, studied to offer versatility and user-friendly solutions. The ROTO 40.18 S lifts up to 4 tons thanks to a newly designed 4 sections-boom, 3 of which sliding, at 18 m. The maximum height can be increased further by the so called "space" platform that can reach 29 m. It is very useful for lifting materials and personnel. 2,240 mm overall width (less 140 mm vs the best competitor in the market) and 3,750mm with fully extended stabilizers (less 220 mm vs the best competitor in the market) represent a record in terms of compactness and versatility. 13,100 kg is the total weight with forks and in working conditions. It highlights the excellent technology level developed and adopted by Merlo technicians to ensure a state-of-the art 18-metre ROTO.

TECHNICAL DATA

ROTO 40.18 S

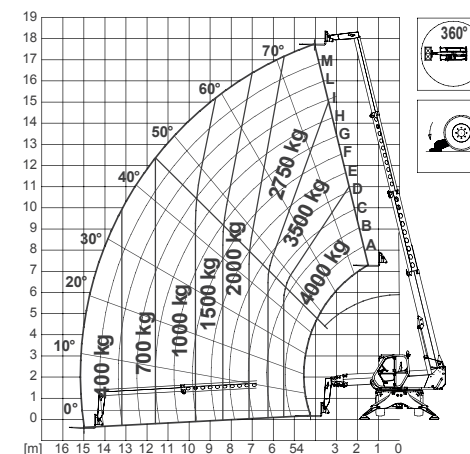
Rated maximum load (kg)	4000
Maximum lift height (with stabilizers) (m)	17.7
Maximum forward reach (m)	15.1
Lift height at full capacity (m)	11
Reach at full capacity (m)	5.5
Capacity at full forward reach (kg)	400
Capacity at full lift height (kg)	2750
Total operating weight (with forks) (kg)	13100
Upperstructure slewing radius (degrees)	400
Speed in the 1 ST gear (kph)	11
Speed in the 2 ST gear (kph)	40
Engine (make/cylinder)	Perkins/4
Tier 3 engine power (kW/HP)	74.5/101

- ✓ ROTO 40.18 S competes the 400° ROTO family, that it consists of 6 models.
- ✓ High technological added value developed by Merlo engineers led to the most compact dimensions offered by the market for maximum versatility and performance.
- ✓ Compactness: -140 mm overall width and -220 mm with stabilizers fully extended vs the best competitor in the market.
- ✓ 4 tons maximum lift capacity for better performance and productivity.
- ✓ 2.75 tons at maximum height. Effective load diagram for better productivity.
- ✓ 17.7m height reached by ROTO 40.18 S boom. State-of-the art height.
- ✓ 15.09 m fully forward boom extension for better performance.
- ✓ Auto-stabilization system. Effective and user-friendly system.
- ✓ Self leveling hydro-pneumatic suspensions. Studied to offer maximum comfort in transit and side tilting manual control.
- ✓ Among the best cabs in the markets for dimensions, comfort and visibility.



DIMENSIONS - ROTO 40.18 S

A (mm)	6015	M (mm)	995
C (mm)	2760	N (mm)	2270
E (mm)	4645	P (mm)	2970
F (mm)	350	R (mm)	3920
H (mm)	2240	Z (mm)	850
L (mm)	3750		





MERLO S.P.A.

Via Nazionale, 9 - 12010 S. Defendente di Cervasca - Cuneo - Italia

Tel. +39 0171 614111 - Fax +39 0171 684101

www.merlo.com - info@merlo.com

*The telehandlers illustrated in this document may be equipped with optional or special accessories that do not form part of the standard supply but which are available on request.
In some countries certain models or attachments may not be available as a result of market restrictions or regulations.
The technical data and other information were up to date at the time of printing, however, in line with our policy of continuous technical improvement, we reserve the right to modify our products without prior notification.
Your Merlo dealer will be pleased to provide you with the latest information on all our products and services.*