



**ROTO 50.35 S Plus**

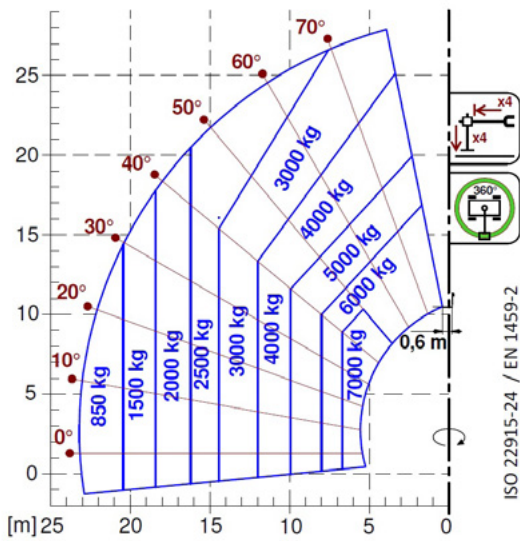
**ROTO 70.28 S Plus**



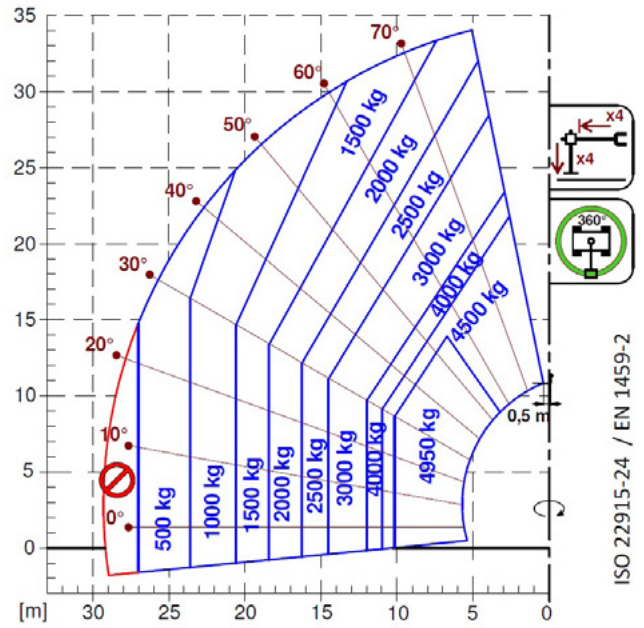
PERFORMANCE AND FEATURES	ROTO 50.35 S Plus	ROTO 70.28 S Plus	
<b>PERFORMANCE</b>			
Total unladen weight (kg)	23350	23000	
Maximum capacity (kg)	4950	7000	
Lifting height (m)	34	28	
Maximum reach (m)	27	23,2	
Maximum operating height (m)	13,9	10,3	
Maximum operating reach (m)	10,1	6,7	
Capacity at maximum height (kg)	2000	3000	
Capacity at maximum reach (kg)	500	850	
Lateral boom movement (mm)	-	-	
Tilting correction (%)	+/-10, +/-8	+/-10, +/-8	
Boom sections	5	4	
<b>POWERTRAIN</b>			
Turbo motor	FPT NEF45	FPT NEF45	
Displacement/cylinders	4500/4	4500/4	
Engine Power (kW/HP)	125/170	125/170	
Anti-pollution technology	EURO IV, SCR+DOC	EURO IV, SCR+DOC	
Reversible fan	-	-	
Maximum speed (km/h)	40	40	
Fuel tank (l)	150	150	
AdBlue tank (l)	43	43	
Hydrostatic transmission	CVTronic	CVTronic	
EPD	●	●	
Axles	Axial	Axial	
Reduction hub	Epicyclic	Epicyclic	
Machine brakes	Wet discs	Wet discs	
Automatic parking brake	●	●	
<b>HYDRAULIC</b>			
Hydraulic pump	2 - LS + FS	2 - LS + FS	
Flow rate/pressure (l/min – bar)	158+100 / 260	158+100 / 260	
Hydraulic tank	200	200	
Hydraulic outlet at the top of the boom	●	●	
Rear hydraulic outlets	-	-	
<b>CAB</b>			
Cab configuration	PREMIUM	PREMIUM	
MCDC	-	-	
FOPS LIV II cab	●	●	
ROPS cab	●	●	
Cab commands	Electronic joystick control	Electronic joystick control	
Tilting Cab	●	●	
Reverse shuttle	Dual Reverse	Dual Reverse	
<b>CONFIGURATION</b>			
Cab suspension	-	-	
Boom suspension	○	○	
Suspension on axles	●	●	
Work headlights on cab	●	●	
Sun blind	●	●	
Tac-lock	●	●	
Provision for a platform	●	●	
Two floating forks	●	●	
Inching-Control	-	-	
Four-wheel drive	●	●	
Four-wheel steering	●	●	
Three steering modes	●	●	
Standard tyres	445/80 R 25	445/80 R 25	
Optional tyres	-	-	
Stabilisers	Multiposition	Multiposition	
Turret rotation	360°	360°	
Type approval as an agricultural tractor	-	-	
Approval with PNEUMATIC braking	-	-	
Approval with HYDRAULIC braking	-	-	
PTO	-	-	
3-point linkage	-	-	
<b>DIMENSION</b>			
Width (mm)	2490	2490	
Height (mm)	3325	3325	
Length (mm)	8590	8330	
Wheelbase (mm)	3780	3780	



## LOAD CHARTS



ROTO 70.28



ROTO 50.35

## GLOSSAR

### SCR

**Selective Catalyst Reduction**, solution used for the reduction of NOx in the exhaust gases through the injection of a liquid - UREA (AdBlue) - into the exhaust gases.

### DPF

**Diesel Particulate Filter**, a solution used to reduce fine particle emissions in exhaust gases

### DOC

**Diesel Oxidation Catalyst**, a solution used to reduce carbon monoxide (CO) and hydrocarbons in exhaust gases

### EGR

**Exhaust Gas Recirculation**, a solution used to reduce NOx in exhaust gases by recirculating gas inside the combustion chamber of the engine.

### 1-2V

1 or 2 speed **Merlo gearbox**

### CVTronic

**Continuous variation Merlo gearbox**, for constant acceleration without loss of torque

### EPD

**Eco Power Drive**, Merlo electronically-controlled hydrostatic transmission Electronic, enables effective RPM management in order to reduce overall fuel consumption by the machine

### EPD Plus

In addition to the **EPD Control**, it is also possible to work using Speed Control (maintaining a constant travel speed) and Heavy Load (management of RPM in order to maximise performance for tasks such as: bucketing operations, heavy duty unloading, etc.)

### EPD Top

In addition to the **EPD Plus** control function, this enables the RPM to be managed directly using the joystick

### Gear

**Fixed displacement pump with gears**, combined with an open centre hydraulic distributor

### LS

Variable displacement pump with **Load Sensing** control, combined with a closed centre hydraulic distributor

### LS+FS

Variable displacement pump with **Load Sensing** control, combined with a closed centre hydraulic distributor equipped with solenoid valves and **Flow Sharing** control.

### Kabine ECO/PREMIUM

**MODULAR** type cabin with simplified or PREMIUM equipment

### MCDC

Merlo Dynamic Load Control, electronic control of the machine's anti-overflow system.

• **Light**: Simplified version; • **Complete**: Version with display in cab.

### FOPS

Falling object protective structure, the system which shields the operator from heavy objects falling onto the cab. Two levels:  
• **FOPS Liv I**: Object with a weight of 45 kg falling from 3 metres • **FOPS Liv II**: Object with a weight of 227 kg falling from 5.2 metres

### ROPS

**Roll-over protection system** (or roll-over protection structure), the system that protects the operator if the vehicle rolls over

### Finger Touch

Driving direction inversion system mounted on the steering column

### Dual Reverse

Dual driving direction inversion system, on both the steering column and the joystick

### Tac-lock

Hydraulic attachment clamping system controlled from the cab



**MERLO S.P.A.**

Via Nazionale, 9  
12010 S. Defendente di Cervasca  
(Cuneo) Italia

Tel. +39 0171 614111

Fax +39 0171 684101

[info@merlo.com](mailto:info@merlo.com)

[www.merlo.com](http://www.merlo.com)



DS\_ROT05070\_2\_0418\_XG