



# U. S. OSTWAL INTERNATIONAL SCHOOL

OSTWAL WONDER CITY, BOISAR (E)

TERM – 1

Name : \_\_\_\_\_

Date:

Grade : V

Marks: 80

ROLL no. \_\_\_\_\_

Time : 2hr 30min

Subject : Science General

## Instructions:

- All questions are compulsory
- Do not write the questions. Directly write the answers.
- Write the paper neatly. 10 min for reading.

### Q.1) Fill in the blanks.

(07)

- 1) \_\_\_\_\_ contains the male reproductive cells.
- 2) All sepals together are called \_\_\_\_\_.
- 3) Once the \_\_\_\_\_ is formed, it divides rapidly to form a multiple – called embryo.
- 4) \_\_\_\_\_ of carrot and sweet potato can give rise to new plants.
- 5) Molecules are composed of very small particles called \_\_\_\_\_.
- 6) \_\_\_\_\_ change can usually be reversed.
- 7) Papaya, cucumber and pumpkin have \_\_\_\_\_ flowers.

### Q.2) Choose the correct answer.

(07).

#### 1) Androecium is the \_\_\_\_\_ whorl of a flower.

- a) Outermost      b) third      c) second      d) Innermost

#### 2) \_\_\_\_\_ is an agent of pollination

- a) wind      b) water      c) insect      d) all of the above

#### 3) The seeds of cotton are dispersed by \_\_\_\_\_.

- a) water      b) wind      c) animals      d) explosion

#### 4) Which of the following is immiscible in water?

- a) Milk      b) butter      c) Orange juice      d) Both (a) and (c)

#### 5) Aquatic animals breathe in \_\_\_\_\_ dissolved in water.

- a) Oxygen      b) nitrogen      c) Carbon dioxide      d) None of the above

#### 6) Gynoecium consists of one or more \_\_\_\_\_.

- a) pistils      b) sepals      c) stamens      d) anthers

#### 7) What happens when you put sand in water?

- a) It dissolves      b) It floats      c) It settles down      d) None of the above

### Q. 3) Write (T) for true and (F) for false statements.

(07)

1. New plants grow from fruits. \_\_\_\_\_
2. Wind, water and insects are agents of pollination. \_\_\_\_\_
3. Onion is a stem that grows under the ground. \_\_\_\_\_
4. Solvent dissolves in solute. \_\_\_\_\_
5. Water on heating becomes gas. \_\_\_\_\_
6. The embryo has two leaf – like cotyledons. \_\_\_\_\_
7. Pollen grains are produced by anther. \_\_\_\_\_

**Q.4) Match the column.**

**(05)**

- |               |                       |
|---------------|-----------------------|
| 1) Sepals     | a) Reproductive cells |
| 2) Ovary      | b) Calyx              |
| 3) Mustard    | c) Gynoecium          |
| 4) Watermelon | d) Bisexual flowers   |
| 5) Gametes    | e) Unisexual flowers  |

**Q.5) Answer the following questions. (any 6)**

**(30)**

- 1) Write a note on female reproductive part of a flower.
- 2) Define vegetative propagation? How does it takes place by leaves.
- 3) Write down the properties of solids and gases.
- 4) Do flowers have 5 basic parts?
- 5) Why cannot all seeds germinate?
- 6) What is chemical change? Explain with the help of an example.
- 7) Is the arrangement of all molecules in all states of matter the same ?

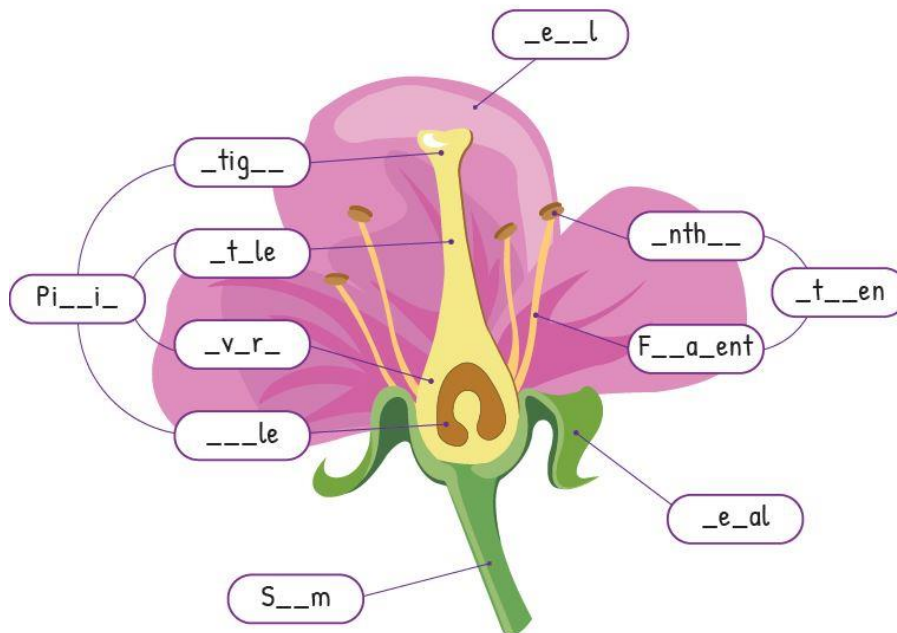
**Q.6 Explain**

**(12)**

- 1) Flower      2) Pollination      3) Reproduction      4) Matter

**Q. 7 Complete the given diagram and highlight its male and female reproductive part. (06)**

Fill in the missing letters to label parts of a flower.



**Q. 8 1. Why do chocolates melt on heating ?**

**(06)**

**2. What happens when oil is poured in a vessel containing water ?**

**\*ALL THE BEST\***

