

**IRS E-file Signature Authorization  
for a Tax-Exempt Entity**

For calendar year 2025, or fiscal year beginning \_\_\_\_\_, 2025, and ending \_\_\_\_\_, 20\_\_\_\_

**2025**

Department of the Treasury  
Internal Revenue Service

**Do not send to the IRS. Keep for your records.  
Go to [www.irs.gov/Form8879TE](http://www.irs.gov/Form8879TE) for the latest information.**

Name of filer

RECYCLED LIVES

EIN or SSN

46-3500882

Name and title of officer or person subject to tax

SHAWN JOHNSON EXEC DIRECTOR

**Part I Type of Return and Return Information**

Check the box for the return for which you are using this Form 8879-TE and enter the applicable amount, if any, from the return. Form 8038-CP and Form 5330 filers may enter dollars and cents. For all other forms, enter whole dollars only. If you check the box on line **1a, 2a, 3a, 4a, 5a, 6a, 7a, 8a, 9a, or 10a** below, and the amount on that line for the return being filed with this form was blank, then leave line **1b, 2b, 3b, 4b, 5b, 6b, 7b, 8b, 9b, or 10b**, whichever is applicable, blank (do not enter -0-). But, if you entered -0- on the return, then enter -0- on the applicable line below. **Do not** complete more than one line in Part I.

<b>1a Form 990</b> check here . . . . . <input checked="" type="checkbox"/>	<b>b Total revenue</b> , if any (Form 990, Part VIII, column (A), line 12) . . . . .	<b>1b</b>	<u>192,618.</u>
<b>2a Form 990-EZ</b> check here . . . . . <input type="checkbox"/>	<b>b Total revenue</b> , if any (Form 990-EZ, line 9) . . . . .	<b>2b</b>	_____
<b>3a Form 1120-POL</b> check here . . . . . <input type="checkbox"/>	<b>b Total tax</b> (Form 1120-POL, line 22) . . . . .	<b>3b</b>	_____
<b>4a Form 990-PF</b> check here . . . . . <input type="checkbox"/>	<b>b Tax based on investment income</b> (Form 990-PF, Part V, line 5) . . . . .	<b>4b</b>	_____
<b>5a Form 8868</b> check here . . . . . <input type="checkbox"/>	<b>b Balance due</b> (Form 8868, line 3c) . . . . .	<b>5b</b>	_____
<b>6a Form 990-T</b> check here . . . . . <input type="checkbox"/>	<b>b Total tax</b> (Form 990-T, Part III, line 4) . . . . .	<b>6b</b>	_____
<b>7a Form 4720</b> check here . . . . . <input type="checkbox"/>	<b>b Total tax</b> (Form 4720, Part III, line 1) . . . . .	<b>7b</b>	_____
<b>8a Form 5227</b> check here . . . . . <input type="checkbox"/>	<b>b FMV of assets at end of tax year</b> (Form 5227, item D) . . . . .	<b>8b</b>	_____
<b>9a Form 5330</b> check here . . . . . <input type="checkbox"/>	<b>b Tax due</b> (Form 5330, Part II, line 19) . . . . .	<b>9b</b>	_____
<b>10a Form 8038-CP</b> check here. . . . . <input type="checkbox"/>	<b>b Amount of credit payment requested</b> (Form 8038-CP, Part III, line 22) . . . . .	<b>10b</b>	_____

**Part II Declaration and Signature Authorization of Officer or Person Subject to Tax**

Under penalties of perjury, I declare that  I am an officer of the above entity or  I am a person subject to tax with respect to (name of entity) \_\_\_\_\_ (EIN) \_\_\_\_\_

and that I have examined a copy of the 2025 electronic return and accompanying schedules and statements, and, to the best of my knowledge and belief, they are true, correct, and complete. I further declare that the amount in Part I above is the amount shown on the copy of the electronic return. I consent to allow my intermediate service provider, transmitter, or electronic return originator (ERO) to send the return to the IRS and to receive from the IRS (a) an acknowledgement of receipt or reason for rejection of the transmission, (b) the reason for any delay in processing the return or refund, and (c) the date of any refund. If applicable, I authorize the U.S. Treasury and its designated Financial Agent to initiate an electronic funds withdrawal (direct debit) entry to the financial institution account indicated in the tax preparation software for payment of the federal taxes owed on this return, and the financial institution to debit the entry to this account. To revoke a payment, I must contact the U.S. Treasury Financial Agent at 1-888-353-4537 no later than 2 business days prior to the payment (settlement) date. I also authorize the financial institutions involved in the processing of the electronic payment of taxes to receive confidential information necessary to answer inquiries and resolve issues related to the payment. I have selected a personal identification number (PIN) as my signature for the electronic return and, if applicable, the consent to electronic funds withdrawal.

**PIN: check one box only**

I authorize NEWTON FINANCIAL SOLUTIONS, LLC to enter my PIN 40039 as my signature

ERO firm name

Enter five numbers, but do not enter all zeros

on the tax year 2025 electronically filed return. If I have indicated within this return that a copy of the return is being filed with a state agency(ies) regulating charities as part of the IRS Fed/State program, I also authorize the aforementioned ERO to enter my PIN on the return's disclosure consent screen.

As an officer or person subject to tax with respect to the entity, I will enter my PIN as my signature on the tax year 2025 electronically filed return. If I have indicated within this return that a copy of the return is being filed with a state agency(ies) regulating charities as part of the IRS Fed/State program, I will enter my PIN on the return's disclosure consent screen.

Signature of officer or person subject to tax \_\_\_\_\_

Date \_\_\_\_\_

**Part III Certification and Authentication**

**ERO's EFIN/PIN.** Enter your six-digit electronic filing identification number (EFIN) followed by your five-digit self-selected PIN.

41598655008

Do not enter all zeros

I certify that the above numeric entry is my PIN, which is my signature on the 2025 electronically filed return indicated above. I confirm that I am submitting this return in accordance with the requirements of **Pub. 4163**, Modernized e-File (MeF) Information for Authorized IRS e-file Providers for Business Returns.

ERO's signature

DONALD HANNAY, CPA

Date \_\_\_\_\_

**ERO Must Retain This Form – See Instructions  
Do Not Submit This Form to the IRS Unless Requested To Do So**

**Application for Extension of Time To File an Exempt Organization  
Return or Excise Taxes Related to Employee Benefit Plans**

OMB No. 1545-0047

**File a separate application for each return.  
Go to [www.irs.gov/Form8868](http://www.irs.gov/Form8868) for the latest information.**

**Electronic filing (e-file).** You can electronically file Form 8868 to request up to a 6-month extension of time to file any of the forms listed below except for Form 8870, Information Return for Transfers Associated With Certain Personal Benefit Contracts. An extension request for Form 8870 must be sent to the IRS in a paper format (see instructions). For more details on the electronic filing of Form 8868, visit [www.irs.gov/e-file-providers/e-file-for-charities-and-non-profits](http://www.irs.gov/e-file-providers/e-file-for-charities-and-non-profits).

**Caution:** If you are going to make an electronic funds withdrawal (direct debit) with this Form 8868, see Form 8453-TE and Form 8879-TE for payment instructions.

All corporations required to file an income tax return other than Form 990-T (including 1120-C filers), partnerships, REMICs, and trusts must use Form 7004 to request an extension of time to file income tax returns.

**Part I – Identification**

<b>Type or Print</b>	Name of exempt organization, employer, or other filer, see instructions. <b>RECYCLED LIVES</b>	Taxpayer identification number (TIN) <b>46-3500882</b>
	Number, street, and room or suite number. If a P.O. box, see instructions. <b>PO BOX 408</b>	
File by the due date for filing your return. See instructions.	City, town or post office, state, and ZIP code. For a foreign address, see instructions. <b>CAMBRIDGE, MN 55008</b>	

Enter the Return Code for the return that this application is for (file a separate application for each return) ..... **01**

Application Is For	Return Code	Application Is For	Return Code
Form 990 or Form 990-EZ	01	Form 4720 (other than individual)	09
Form 4720 (individual)	03	Form 5227	10
Form 990-PF	04	Form 6069	11
Form 990-T (section 401(a) or 408(a) trust)	05	Form 8870	12
Form 990-T (trust other than above)	06	Form 5330 (individual)	13
Form 990-T (corporation)	07	Form 5330 (other than individual)	14
Form 1041-A	08	Form 990-T (governmental entities)	15

- After you enter your Return Code, complete either Part II or Part III. Part III, including signature, is applicable only for an extension of time to file Form 5330.
- If this application is for an extension of time to file Form 5330, you must enter the following information.

Plan Name \_\_\_\_\_  
Plan Number \_\_\_\_\_  
Plan Year Ending (MM/DD/YYYY) \_\_\_\_\_

**Part II – Automatic Extension of Time To File for Exempt Organizations** (see instructions)

The books are in the care of SHAWN JOHNSON 811 WINSOME WAY NE ISANTI MN 55040  
Telephone No. (612) 709-0914 Fax No. \_\_\_\_\_

- If the organization does not have an office or place of business in the United States, check this box
- If this is for a Group Return, enter the organization's four-digit Group Exemption Number (GEN) \_\_\_\_\_  
If this is for the whole group, check this box.   
If it is for part of the group, check this box and attach a list with the names and TINs of all members the extension is for.

**1** I request an automatic 6-month extension of time until 11/15, 2026, to file the **exempt organization return** for the organization named above. The extension is for the organization's return for:

calendar year 2025 or  
 tax year beginning \_\_\_\_\_, 20\_\_\_\_, and ending \_\_\_\_\_, 20\_\_\_\_.

**2** If the tax year entered in line 1 is for less than 12 months, check reason:

Initial return  Final return  Change in accounting period

<b>3a</b> If this application is for Forms 990-PF, 990-T, 4720, or 6069, enter the tentative tax, less any nonrefundable credits. See instructions.	<b>3a</b>	\$	0.
<b>b</b> If this application is for Forms 990-PF, 990-T, 4720, or 6069, enter any refundable credits and estimated tax payments made. Include any prior year overpayment allowed as a credit.	<b>3b</b>	\$	0.
<b>c Balance due.</b> Subtract line 3b from line 3a. Include your payment with this form, if required, by using EFTPS (Electronic Federal Tax Payment System). See instructions.	<b>3c</b>	\$	0.

Return of Organization Exempt From Income Tax
Under section 501(c), 527, or 4947(a)(1) of the Internal Revenue Code (except private foundations)

2025

Department of the Treasury
Internal Revenue Service

Do not enter social security numbers on this form as it may be made public.
Go to www.irs.gov/Form990 for instructions and the latest information.

Open to Public Inspection

A For the 2025 calendar year, or tax year beginning, 2025, and ending, 20

B Check if applicable: Address change, Name change, Initial return, Final return/terminated, Amended return, Application pending
C RECYCLED LIVES, PO BOX 408, CAMBRIDGE, MN 55008
D Employer identification number 46-3500882
E Telephone number 612-709-0914
F Name and address of principal officer: SHAWN JOHNSON, 811 WINSOME WAY NE ISANTI, MN 55040
G Gross receipts \$ 192,618.
H(a) Is this a group return for subordinates? Yes No
H(b) Are all subordinates included? Yes No
I Tax-exempt status: 501(c)(3)
J Website: WWW.RECYCLEDLIVES.ORG
K Form of organization: Corporation
L Year of formation: 2013
M State of legal domicile: MN

Part I Summary

Table with 22 rows and 3 columns: Description, Prior Year, Current Year. Rows include mission statement, governance metrics, revenue (total 192,618), expenses (total 237,208), and net assets (total 113,996).

Part II Signature Block

Under penalties of perjury, I declare that I have examined this return, including accompanying schedules and statements, and to the best of my knowledge and belief, it is true, correct, and complete. Declaration of preparer (other than officer) is based on all information of which preparer has any knowledge.

Sign Here: SHAWN JOHNSON, EXEC DIRECTOR
Paid Preparer Use Only: DONALD HANNAY, CPA, NEWTON FINANCIAL SOLUTIONS, LLC, 600 MAIN STREET S, STE 110, CAMBRIDGE, MN 55008

May the IRS discuss this return with the preparer shown above? See instructions. Yes No

**Part III Statement of Program Service Accomplishments**

Check if Schedule O contains a response or note to any line in this Part III

1 Briefly describe the organization's mission:

ADVOCATING & ACTIONS FOCUSED ON CEASING POVERTY FOR ALL OF GOD'S PEOPLE THROUGHOUT THE WORLD.

2 Did the organization undertake any significant program services during the year which were not listed on the prior Form 990 or 990-EZ?  Yes  No

If "Yes," describe these new services on Schedule O.

3 Did the organization cease conducting, or make significant changes in how it conducts, any program services?  Yes  No

If "Yes," describe these changes on Schedule O.

4 Describe the organization's program service accomplishments for each of its three largest program services, as measured by expenses. Section 501(c)(3) and 501(c)(4) organizations are required to report the amount of grants and allocations to others, the total expenses, and revenue, if any, for each program service reported.

4a (Code: ) (Expenses \$ 74,516. including grants of \$ ) (Revenue \$ )

SEE SCHEDULE O

4b (Code: ) (Expenses \$ 72,956. including grants of \$ ) (Revenue \$ )

HOME CONSTRUCTION & HOME IMPROVEMENT PROGRAM: IN 2025 SIX BLOCK HOMES WERE CONSTRUCTED. WHEN HOMES ARE NOT BEING CONSTRUCTED, WE WORK TO PROVIDE ASSISTANCE WITH VARIOUS HOME/LIVING IMPROVEMENT PROJECTS SUCH AS DIGGING WELLS, SEPTIC SYSTEMS, CONSTRUCTING LIGHT POSTS, POURING CONCRETE FLOORS, & REPAIRING ROOFS.

4c (Code: ) (Expenses \$ 58,084. including grants of \$ ) (Revenue \$ )

FOOD DISTRIBUTION PROGRAM: 200 FAMILIES (APPROX 700 INDIVIDUALS) RECEIVE A MONTHLY SUPPLEMENTAL FOOD PACKAGE. THESE FAMILIES LIVE IN EXTREME POVERTY ON AND AROUND A COMMUNITY LANDFILL. 4,000 POUNDS OF RICE & BEANS (GRAINS) ARE DISTRIBUTED TO AN ESTABLISHED LIST OF RECIPIENTS EACH MONTH. DURING THE DISTRIBUTION, WE PROVIDE EDUCATION & INFORMATION ON TOPICS AND OPPORTUNITIES TO HELP IMPROVE HEALTH & WELL-BEING AS WELL AS SELF-SUFFICIENCY. OPPORTUNITIES ARE OFFERED FOR FOOD RECIPIENTS TO VISIT WITH A MISSIONARY OR COMMUNITY LIAISON TO SHARE ABOUT ANY PHYSICAL, MENTAL OR SPIRITUAL NEEDS IN WHICH WE WORK TO MEET THESE REQUESTS/NEEDS.

4d Other program services (Describe on Schedule O.)

(Expenses \$ including grants of \$ ) (Revenue \$ )

4e Total program service expenses 205,556.

**Part IV Checklist of Required Schedules**

	Yes	No
<b>1</b> Is the organization described in section 501(c)(3) or 4947(a)(1) (other than a private foundation)? <i>If "Yes," complete Schedule A.</i> .....	<b>1</b> X	
<b>2</b> Is the organization required to complete <i>Schedule B, Schedule of Contributors</i> ? See instructions .....	<b>2</b> X	
<b>3</b> Did the organization engage in direct or indirect political campaign activities on behalf of or in opposition to candidates for public office? <i>If "Yes," complete Schedule C, Part I.</i> .....	<b>3</b>	X
<b>4 Section 501(c)(3) organizations.</b> Did the organization engage in lobbying activities, or have a section 501(h) election in effect during the tax year? <i>If "Yes," complete Schedule C, Part II.</i> .....	<b>4</b>	X
<b>5</b> Is the organization a section 501(c)(4), 501(c)(5), or 501(c)(6) organization that receives membership dues, assessments, or similar amounts as defined in Rev. Proc. 98-19? <i>If "Yes," complete Schedule C, Part III.</i> .....	<b>5</b>	X
<b>6</b> Did the organization maintain any donor advised funds or any similar funds or accounts for which donors have the right to provide advice on the distribution or investment of amounts in such funds or accounts? <i>If "Yes," complete Schedule D, Part I.</i> .....	<b>6</b>	X
<b>7</b> Did the organization receive or hold a conservation easement, including easements to preserve open space, the environment, historic land areas, or historic structures? <i>If "Yes," complete Schedule D, Part II.</i> .....	<b>7</b>	X
<b>8</b> Did the organization maintain collections of works of art, historical treasures, or other similar assets? <i>If "Yes," complete Schedule D, Part III.</i> .....	<b>8</b>	X
<b>9</b> Did the organization report an amount in Part X, line 21, for escrow or custodial account liability, serve as a custodian for amounts not listed in Part X; or provide credit counseling, debt management, credit repair, or debt negotiation services? <i>If "Yes," complete Schedule D, Part IV.</i> .....	<b>9</b>	X
<b>10</b> Did the organization, directly or through a related organization, hold assets in donor-restricted endowments or in quasi-endowments? <i>If "Yes," complete Schedule D, Part V.</i> .....	<b>10</b>	X
<b>11</b> If the organization's answer to any of the following questions is "Yes," then complete Schedule D, Parts VI, VII, VIII, IX, or X, as applicable.		
<b>a</b> Did the organization report an amount for land, buildings, and equipment in Part X, line 10? <i>If "Yes," complete Schedule D, Part VI.</i> .....	<b>11a</b> X	
<b>b</b> Did the organization report an amount for investments – other securities in Part X, line 12, that is 5% or more of its total assets reported in Part X, line 16? <i>If "Yes," complete Schedule D, Part VII.</i> .....	<b>11b</b>	X
<b>c</b> Did the organization report an amount for investments – program related in Part X, line 13, that is 5% or more of its total assets reported in Part X, line 16? <i>If "Yes," complete Schedule D, Part VIII.</i> .....	<b>11c</b>	X
<b>d</b> Did the organization report an amount for other assets in Part X, line 15, that is 5% or more of its total assets reported in Part X, line 16? <i>If "Yes," complete Schedule D, Part IX.</i> .....	<b>11d</b>	X
<b>e</b> Did the organization report an amount for other liabilities in Part X, line 25? <i>If "Yes," complete Schedule D, Part X.</i> .....	<b>11e</b> X	
<b>f</b> Did the organization's separate or consolidated financial statements for the tax year include a footnote that addresses the organization's liability for uncertain tax positions under FIN 48 (ASC 740)? <i>If "Yes," complete Schedule D, Part X.</i> .....	<b>11f</b>	X
<b>12a</b> Did the organization obtain separate, independent audited financial statements for the tax year? <i>If "Yes," complete Schedule D, Parts XI and XII.</i> .....	<b>12a</b>	X
<b>b</b> Was the organization included in consolidated, independent audited financial statements for the tax year? <i>If "Yes," and if the organization answered "No" to line 12a, then completing Schedule D, Parts XI and XII is optional.</i> .....	<b>12b</b>	X
<b>13</b> Is the organization a school described in section 170(b)(1)(A)(ii)? <i>If "Yes," complete Schedule E.</i> .....	<b>13</b>	X
<b>14a</b> Did the organization maintain an office, employees, or agents outside of the United States? .....	<b>14a</b>	X
<b>b</b> Did the organization have aggregate revenues or expenses of more than \$10,000 from grantmaking, fundraising, business, investment, and program service activities outside the United States, or aggregate foreign investments valued at \$100,000 or more? <i>If "Yes," complete Schedule F, Parts I and IV.</i> .....	<b>14b</b> X	
<b>15</b> Did the organization report on Part IX, column (A), line 3, more than \$5,000 of grants or other assistance to or for any foreign organization? <i>If "Yes," complete Schedule F, Parts II and IV.</i> .....	<b>15</b>	X
<b>16</b> Did the organization report on Part IX, column (A), line 3, more than \$5,000 of aggregate grants or other assistance to or for foreign individuals? <i>If "Yes," complete Schedule F, Parts III and IV.</i> .....	<b>16</b>	X
<b>17</b> Did the organization report a total of more than \$15,000 of expenses for professional fundraising services on Part IX, column (A), lines 6 and 11e? <i>If "Yes," complete Schedule G, Part I.</i> See instructions. ....	<b>17</b>	X
<b>18</b> Did the organization report more than \$15,000 total of fundraising event gross income and contributions on Part VIII, lines 1c and 8a? <i>If "Yes," complete Schedule G, Part II.</i> .....	<b>18</b>	X
<b>19</b> Did the organization report more than \$15,000 of gross income from gaming activities on Part VIII, line 9a? <i>If "Yes," complete Schedule G, Part III.</i> .....	<b>19</b>	X
<b>20a</b> Did the organization operate one or more hospital facilities? <i>If "Yes," complete Schedule H.</i> .....	<b>20a</b>	X
<b>b</b> If "Yes" to line 20a, did the organization attach a copy of its audited financial statements to this return? .....	<b>20b</b>	
<b>21</b> Did the organization report more than \$5,000 of grants or other assistance to any domestic organization or domestic government on Part IX, column (A), line 1? <i>If "Yes," complete Schedule I, Parts I and II.</i> .....	<b>21</b>	X

**Part IV Checklist of Required Schedules** (continued)

	Yes	No
<b>22</b> Did the organization report more than \$5,000 of grants or other assistance to or for domestic individuals on Part IX, column (A), line 2? <i>If "Yes," complete Schedule I, Parts I and III.</i> .....		X
<b>23</b> Did the organization answer "Yes" to Part VII, Section A, line 3, 4, or 5, about compensation of the organization's current and former officers, directors, trustees, key employees, and highest compensated employees? <i>If "Yes," complete Schedule J.</i> .....		X
<b>24a</b> Did the organization have a tax-exempt bond issue with an outstanding principal amount of more than \$100,000 as of the last day of the year, that was issued after December 31, 2002? <i>If "Yes," answer lines 24b through 24d and complete Schedule K. If "No," go to line 25a.</i> .....		X
<b>b</b> Did the organization invest any proceeds of tax-exempt bonds beyond a temporary period exception?.....		
<b>c</b> Did the organization maintain an escrow account other than a refunding escrow at any time during the year to defease any tax-exempt bonds?.....		
<b>d</b> Did the organization act as an "on behalf of" issuer for bonds outstanding at any time during the year?.....		
<b>25a Section 501(c)(3), 501(c)(4), and 501(c)(29) organizations.</b> Did the organization engage in an excess benefit transaction with a disqualified person during the year? <i>If "Yes," complete Schedule L, Part I.</i> .....		X
<b>b</b> Is the organization aware that it engaged in an excess benefit transaction with a disqualified person in a prior year, and that the transaction has not been reported on any of the organization's prior Forms 990 or 990-EZ? <i>If "Yes," complete Schedule L, Part I.</i> .....		X
<b>26</b> Did the organization report any amount on Part X, line 5 or 22, for receivables from or payables to any current or former officer, director, trustee, key employee, creator or founder, substantial contributor, or 35% controlled entity or family member of any of these persons? <i>If "Yes," complete Schedule L, Part II.</i> .....		X
<b>27</b> Did the organization provide a grant or other assistance to any current or former officer, director, trustee, key employee, creator or founder, substantial contributor or employee thereof, a grant selection committee member, or to a 35% controlled entity (including an employee thereof) or family member of any of these persons? <i>If "Yes," complete Schedule L, Part III.</i> .....		X
<b>28</b> Was the organization a party to a business transaction with one of the following parties? (See the Schedule L, Part IV, instructions for applicable filing thresholds, conditions, and exceptions).		
<b>a</b> A current or former officer, director, trustee, key employee, creator or founder, or substantial contributor? <i>If "Yes," complete Schedule L, Part IV.</i> .....		X
<b>b</b> A family member of any individual described in line 28a? <i>If "Yes," complete Schedule L, Part IV.</i> .....		X
<b>c</b> A 35% controlled entity of one or more individuals and/or organizations described in line 28a or 28b? <i>If "Yes," complete Schedule L, Part IV.</i> .....		X
<b>29</b> Did the organization receive more than \$25,000 in noncash contributions? <i>If "Yes," complete Schedule M.</i> .....		X
<b>30</b> Did the organization receive contributions of art, historical treasures, or other similar assets, or qualified conservation contributions? <i>If "Yes," complete Schedule M.</i> .....		X
<b>31</b> Did the organization liquidate, terminate, or dissolve and cease operations? <i>If "Yes," complete Schedule N, Part I.</i> .....		X
<b>32</b> Did the organization sell, exchange, dispose of, or transfer more than 25% of its net assets? <i>If "Yes," complete Schedule N, Part II.</i> .....		X
<b>33</b> Did the organization own 100% of an entity disregarded as separate from the organization under Regulations sections 301.7701-2 and 301.7701-3? <i>If "Yes," complete Schedule R, Part I.</i> .....		X
<b>34</b> Was the organization related to any tax-exempt or taxable entity? <i>If "Yes," complete Schedule R, Part II, III, or IV, and Part V, line 1.</i> .....		X
<b>35a</b> Did the organization have a controlled entity within the meaning of section 512(b)(13)?.....		X
<b>b</b> If "Yes" to line 35a, did the organization receive any payment from or engage in any transaction with a controlled entity within the meaning of section 512(b)(13)? <i>If "Yes," complete Schedule R, Part V, line 2.</i> .....		
<b>36 Section 501(c)(3) organizations.</b> Did the organization make any transfers to an exempt non-charitable related organization? <i>If "Yes," complete Schedule R, Part V, line 2.</i> .....		X
<b>37</b> Did the organization conduct more than 5% of its activities through an entity that is not a related organization and that is treated as a partnership for federal income tax purposes? <i>If "Yes," complete Schedule R, Part VI.</i> .....		X
<b>38</b> Did the organization complete Schedule O and provide explanations on Schedule O for Part VI, lines 11b and 19? <b>Note:</b> All Form 990 filers are required to complete Schedule O. ....	X	

**Part V Statements Regarding Other IRS Filings and Tax Compliance**

Check if Schedule O contains a response or note to any line in this Part V

	Yes	No
<b>1a</b> Enter the number reported in box 3 of Form 1096. Enter -0- if not applicable.....		
<b>b</b> Enter the number of Forms W-2G included on line 1a. Enter -0- if not applicable.....		
<b>c</b> Did the organization comply with backup withholding rules for reportable payments to vendors and reportable gaming (gambling) winnings to prize winners?.....		

Part V Statements Regarding Other IRS Filings and Tax Compliance (continued)

Table with columns for question number, question text, and Yes/No response boxes. Includes questions 2a through 17 regarding employee reporting, tax shelter transactions, and charitable contributions.

Part VI Governance, Management, and Disclosure. For each "Yes" response to lines 2 through 7b below, and for a "No" response to line 8a, 8b, or 10b below, describe the circumstances, processes, or changes on Schedule O. See instructions.

Check if Schedule O contains a response or note to any line in this Part VI. [X]

Section A. Governing Body and Management

Table with 3 columns: Question, Yes, No. Rows include: 1a (7), 1b (7), 2 (X), 3 (X), 4 (X), 5 (X), 6 (X), 7a (X), 7b (X), 8a (X), 8b (X), 9 (X).

Section B. Policies (This Section B requests information about policies not required by the Internal Revenue Code.)

Table with 3 columns: Question, Yes, No. Rows include: 10a (X), 10b, 11a (X), 11b (SEE SCHEDULE O), 12a (X), 12b (X), 12c (X), 13 (X), 14 (X), 15a (X), 15b (X), 16a (X), 16b.

Section C. Disclosure

- 17 List the states with which a copy of this Form 990 is required to be filed MN
18 Section 6104 requires an organization to make its Forms 1023 (1024 or 1024-A, if applicable), 990, and 990-T (section 501(c)(3)s only) available for public inspection. Indicate how you made these available. Check all that apply.
[X] Own website [ ] Another's website [X] Upon request [ ] Other (explain on Schedule O)
19 Describe on Schedule O whether (and if so, how) the organization made its governing documents, conflict of interest policy, and financial statements available to the public during the tax year. SEE SCHEDULE O
20 State the name, address, and telephone number of the person who possesses the organization's books and records. SHAWN JOHNSON 811 WINSOME WAY NE ISANTI MN 55040 (612) 709-0914

**Part VII Compensation of Officers, Directors, Trustees, Key Employees, Highest Compensated Employees, and Independent Contractors**

Check if Schedule O contains a response or note to any line in this Part VII

**Section A. Officers, Directors, Trustees, Key Employees, and Highest Compensated Employees**

**1a** Complete this table for all persons required to be listed. Report compensation for the calendar year ending with or within the organization's tax year.

- List all of the organization's **current** officers, directors, trustees (whether individuals or organizations), regardless of amount of compensation. Enter -0- in columns (D), (E), and (F) if no compensation was paid.
- List all of the organization's **current** key employees, if any. See the instructions for definition of "key employee."
- List the organization's five **current** highest compensated employees (other than an officer, director, trustee, or key employee) who received reportable compensation (box 5 of Form W-2, box 6 of Form 1099-MISC, and/or box 1 of Form 1099-NEC) of more than \$100,000 from the organization and any related organizations.
- List all of the organization's **former** officers, key employees, and highest compensated employees who received more than \$100,000 of reportable compensation from the organization and any related organizations.
- List all of the organization's **former directors or trustees** that received, in the capacity as a former director or trustee of the organization, more than \$10,000 of reportable compensation from the organization and any related organizations.

See the instructions for the order in which to list the persons above.

Check this box if neither the organization nor any related organization compensated any current officer, director, or trustee.

(A) Name and title	(B) Average hours per week (list any hours for related organizations below dotted line)	(C) Position (do not check more than one box, unless person is both an officer and a director/trustee)						(D) Reportable compensation from the organization (W-2/1099-MISC/1099-NEC)	(E) Reportable compensation from related organizations (W-2/1099-MISC/1099-NEC)	(F) Estimated amount of other compensation from the organization and related organizations
		Individual trustee or director	Institutional trustee	Officer	Key employee	Highest compensated employee	Former			
(1) SHAWN JOHNSON EXECUTIVE DIR.	40 0	X		X			58,000.	0.	12,221.	
(2) DAN KUNTZ BOARD CHAIR	3 0	X		X			0.	0.	0.	
(3) JOHN WEIERS VICE CHR/TREASU	1 0	X		X			0.	0.	0.	
(4) MARA BOURKE SECRETARY	1 0	X		X			0.	0.	0.	
(5) CLYDE BLOYER MEMBER	1 0	X					0.	0.	0.	
(6) MICHELLE JILK MEMBER	1 0	X					0.	0.	0.	
(7) MARK POUND MEMBER	1 0	X					0.	0.	0.	
(8)										
(9)										
(10)										
(11)										
(12)										
(13)										
(14)										

**Part VII Section A. Officers, Directors, Trustees, Key Employees, and Highest Compensated Employees** *(continued)*

(A) Name and title	(B) Average hours per week (list any hours for related organizations below dotted line)	(C) Position (do not check more than one box, unless person is both an officer and a director/trustee)					(D) Reportable compensation from the organization (W-2/1099-MISC/1099-NEC)	(E) Reportable compensation from related organizations (W-2/1099-MISC/1099-NEC)	(F) Estimated amount of other compensation from the organization and related organizations
		Individual trustee or director	Institutional trustee	Officer	Key employee	Highest compensated employee			
(15) -----									
(16) -----									
(17) -----									
(18) -----									
(19) -----									
(20) -----									
(21) -----									
(22) -----									
(23) -----									
(24) -----									
(25) -----									

DO NOT MAIL

<b>1b Subtotal</b> .....	58,000.	0.	12,221.
<b>c Total from continuation sheets to Part VII, Section A</b> .....	0.	0.	0.
<b>d Total (add lines 1b and 1c)</b> .....	58,000.	0.	12,221.

**2** Total number of individuals (including but not limited to those listed above) who received more than \$100,000 of reportable compensation from the organization 0

		Yes	No
<b>3</b> Did the organization list any <b>former</b> officer, director, trustee, key employee, or highest compensated employee on line 1a? <i>If "Yes," complete Schedule J for such individual.</i> .....	<b>3</b>		X
<b>4</b> For any individual listed on line 1a, is the sum of reportable compensation and other compensation from the organization and related organizations greater than \$150,000? <i>If "Yes," complete Schedule J for such individual.</i> .....	<b>4</b>		X
<b>5</b> Did any person listed on line 1a receive or accrue compensation from any unrelated organization or individual for services rendered to the organization? <i>If "Yes," complete Schedule J for such person.</i> .....	<b>5</b>		X

**Section B. Independent Contractors**

**1** Complete this table for your five highest compensated independent contractors that received more than \$100,000 of compensation from the organization. Report compensation for the calendar year ending with or within the organization's tax year.

(A) Name and business address	(B) Description of services	(C) Compensation

**2** Total number of independent contractors (including but not limited to those listed above) who received more than \$100,000 of compensation from the organization 0

**Part VIII Statement of Revenue**

Check if Schedule O contains a response or note to any line in this Part VIII

			(A) Total revenue	(B) Related or exempt function revenue	(C) Unrelated business revenue	(D) Revenue excluded from tax under sections 512-514	
<b>Contributions, Gifts, Grants, and Other Similar Amounts</b>	<b>1a</b> Federated campaigns .....	<b>1a</b>					
	<b>b</b> Membership dues .....	<b>1b</b>					
	<b>c</b> Fundraising events .....	<b>1c</b>					
	<b>d</b> Related organizations .....	<b>1d</b>					
	<b>e</b> Government grants (contributions) .....	<b>1e</b>					
	<b>f</b> All other contributions, gifts, grants, and similar amounts not included above .....	<b>1f</b>	188,331.				
	<b>g</b> Noncash contributions included in lines 1a-1f .....	<b>1g</b>					
	<b>h Total.</b> Add lines 1a-1f .....		188,331.				
	<b>Program Service Revenue</b>	<b>2a</b> Business Code					
<b>b</b> -----							
<b>c</b> -----							
<b>d</b> -----							
<b>e</b> -----							
<b>f</b> All other program service revenue .....							
<b>g Total.</b> Add lines 2a-2f .....							
<b>Other Revenue</b>	<b>3</b> Investment income (including dividends, interest, and other similar amounts) .....		4,287.	4,287.			
	<b>4</b> Income from investment of tax-exempt bond proceeds .....						
	<b>5</b> Royalties .....						
	<b>6a</b> Gross rents .....	(i) Real	(ii) Personal				
		<b>6b</b> Less: rental expenses .....					
		<b>6c</b> Rental income or (loss) .....					
	<b>d</b> Net rental income or (loss) .....						
	<b>7a</b> Gross amount from sales of assets other than inventory .....	(i) Securities	(ii) Other				
		<b>7b</b> Less: cost or other basis and sales expenses .....					
		<b>7c</b> Gain or (loss) .....					
	<b>d</b> Net gain or (loss) .....						
	<b>8a</b> Gross income from fundraising events (not including \$ _____ of contributions reported on line 1c). See Part IV, line 18 .....	<b>8a</b>					
		<b>b</b> Less: direct expenses .....					
		<b>c</b> Net income or (loss) from fundraising events .....					
<b>9a</b> Gross income from gaming activities. See Part IV, line 19 .....	<b>9a</b>						
	<b>b</b> Less: direct expenses .....						
	<b>c</b> Net income or (loss) from gaming activities .....						
<b>10a</b> Gross sales of inventory, less returns and allowances .....	<b>10a</b>						
	<b>b</b> Less: cost of goods sold .....						
	<b>c</b> Net income or (loss) from sales of inventory .....						
<b>Miscellaneous Revenue</b>	<b>11a</b> Business Code						
	<b>b</b> -----						
	<b>c</b> -----						
	<b>d</b> All other revenue .....						
	<b>e Total.</b> Add lines 11a-11d .....						
<b>12 Total revenue.</b> See instructions .....			192,618.	4,287.	0.	0.	

DO NOT MAIL

**Part IX Statement of Functional Expenses**

Section 501(c)(3) and 501(c)(4) organizations must complete all columns. All other organizations must complete column (A).

Check if Schedule O contains a response or note to any line in this Part IX.

<b>Do not include amounts reported on lines 6b, 7b, 8b, 9b, and 10b of Part VIII.</b>	<b>(A)</b> Total expenses	<b>(B)</b> Program service expenses	<b>(C)</b> Management and general expenses	<b>(D)</b> Fundraising expenses
<b>1</b> Grants and other assistance to domestic organizations and domestic governments. See Part IV, line 21				
<b>2</b> Grants and other assistance to domestic individuals. See Part IV, line 22				
<b>3</b> Grants and other assistance to foreign organizations, foreign governments, and foreign individuals. See Part IV, lines 15 and 16	135,732.	135,732.		
<b>4</b> Benefits paid to or for members				
<b>5</b> Compensation of current officers, directors, trustees, and key employees	70,221.	52,666.	17,555.	0.
<b>6</b> Compensation not included above to disqualified persons (as defined under section 4958(f)(1)) and persons described in section 4958(c)(3)(B)	0.	0.	0.	0.
<b>7</b> Other salaries and wages				
<b>8</b> Pension plan accruals and contributions (include section 401(k) and 403(b) employer contributions)				
<b>9</b> Other employee benefits	986.	739.	247.	
<b>10</b> Payroll taxes	4,659.	3,494.	1,165.	
<b>11</b> Fees for services (nonemployees):				
<b>a</b> Management				
<b>b</b> Legal				
<b>c</b> Accounting	1,121.		1,121.	
<b>d</b> Lobbying				
<b>e</b> Professional fundraising services. See Part IV, line 17				
<b>f</b> Investment management fees				
<b>g</b> Other. (If line 11g amount exceeds 10% of line 25, column (A), amount, list line 11g expenses on Schedule O.)				
<b>12</b> Advertising and promotion	3,382.		3,382.	
<b>13</b> Office expenses	835.		835.	
<b>14</b> Information technology	2,612.		2,612.	
<b>15</b> Royalties				
<b>16</b> Occupancy	9,818.	9,818.		
<b>17</b> Travel	6,214.	3,107.	3,107.	
<b>18</b> Payments of travel or entertainment expenses for any federal, state, or local public officials				
<b>19</b> Conferences, conventions, and meetings				
<b>20</b> Interest				
<b>21</b> Payments to affiliates				
<b>22</b> Depreciation, depletion, and amortization				
<b>23</b> Insurance				
<b>24</b> Other expenses. Itemize expenses not covered above. (List miscellaneous expenses on line 24e. If line 24e amount exceeds 10% of line 25, column (A), amount, list line 24e expenses on Schedule O.)				
<b>a</b> <u>BANK CHARGES</u>	1,628.		1,628.	
<b>b</b> _____				
<b>c</b> _____				
<b>d</b> _____				
<b>e</b> All other expenses				
<b>25</b> Total functional expenses. Add lines 1 through 24e.	237,208.	205,556.	31,652.	0.
<b>26</b> Joint costs. Complete this line only if the organization reported in column (B) joint costs from a combined educational campaign and fundraising solicitation. Check here <input type="checkbox"/> if following SOP 98-2 (ASC 958-720).				

**Part X Balance Sheet**

Check if Schedule O contains a response or note to any line in this Part X.

		(A) Beginning of year		(B) End of year
<b>Assets</b>	<b>1</b> Cash – non-interest-bearing	59,403.	<b>1</b>	66,753.
	<b>2</b> Savings and temporary cash investments	100,000.	<b>2</b>	50,000.
	<b>3</b> Pledges and grants receivable, net		<b>3</b>	
	<b>4</b> Accounts receivable, net		<b>4</b>	
	<b>5</b> Loans and other receivables from any current or former officer, director, trustee, key employee, creator or founder, substantial contributor, or 35% controlled entity or family member of any of these persons		<b>5</b>	
	<b>6</b> Loans and other receivables from other disqualified persons (as defined under section 4958(f)(1)), and persons described in section 4958(c)(3)(B)		<b>6</b>	
	<b>7</b> Notes and loans receivable, net		<b>7</b>	
	<b>8</b> Inventories for sale or use		<b>8</b>	
	<b>9</b> Prepaid expenses and deferred charges		<b>9</b>	
	<b>10a</b> Land, buildings, and equipment: cost or other basis. Complete Part VI of Schedule D	<b>10a</b> 23,033.		
	<b>b</b> Less: accumulated depreciation	<b>10b</b> 23,033.	<b>10c</b>	
	<b>11</b> Investments – publicly traded securities		<b>11</b>	
	<b>12</b> Investments – other securities. See Part IV, line 11		<b>12</b>	
	<b>13</b> Investments – program-related. See Part IV, line 11		<b>13</b>	
	<b>14</b> Intangible assets		<b>14</b>	
	<b>15</b> Other assets. See Part IV, line 11		<b>15</b>	
<b>16 Total assets.</b> Add lines 1 through 15 (must equal line 33)	159,403.	<b>16</b>	116,753.	
<b>Liabilities</b>	<b>17</b> Accounts payable and accrued expenses		<b>17</b>	
	<b>18</b> Grants payable		<b>18</b>	
	<b>19</b> Deferred revenue		<b>19</b>	
	<b>20</b> Tax-exempt bond liabilities		<b>20</b>	
	<b>21</b> Escrow or custodial account liability. Complete Part IV of Schedule D		<b>21</b>	
	<b>22</b> Loans and other payables to any current or former officer, director, trustee, key employee, creator or founder, substantial contributor, or 35% controlled entity or family member of any of these persons		<b>22</b>	
	<b>23</b> Secured mortgages and notes payable to unrelated third parties		<b>23</b>	
	<b>24</b> Unsecured notes and loans payable to unrelated third parties		<b>24</b>	
	<b>25</b> Other liabilities (including federal income tax, payables to related third parties, and other liabilities not included on lines 17-24). Complete Part X of Schedule D	817.	<b>25</b>	2,757.
	<b>26 Total liabilities.</b> Add lines 17 through 25	817.	<b>26</b>	2,757.
<b>Net Assets or Fund Balances</b>	<b>Organizations that follow FASB ASC 958, check here <input checked="" type="checkbox"/> and complete lines 27, 28, 32, and 33.</b>			
	<b>27</b> Net assets without donor restrictions	148,594.	<b>27</b>	104,004.
	<b>28</b> Net assets with donor restrictions	9,992.	<b>28</b>	9,992.
	<b>Organizations that do not follow FASB ASC 958, check here <input type="checkbox"/> and complete lines 29 through 33.</b>			
	<b>29</b> Capital stock or trust principal, or current funds		<b>29</b>	
	<b>30</b> Paid-in or capital surplus, or land, building, or equipment fund		<b>30</b>	
	<b>31</b> Retained earnings, endowment, accumulated income, or other funds		<b>31</b>	
	<b>32 Total net assets or fund balances.</b>	158,586.	<b>32</b>	113,996.
<b>33 Total liabilities and net assets/fund balances.</b>	159,403.	<b>33</b>	116,753.	

**Part XI Reconciliation of Net Assets**

Check if Schedule O contains a response or note to any line in this Part XI.

<b>1</b>	Total revenue (must equal Part VIII, column (A), line 12)	<b>1</b>	192,618.
<b>2</b>	Total expenses (must equal Part IX, column (A), line 25)	<b>2</b>	237,208.
<b>3</b>	Revenue less expenses. Subtract line 2 from line 1	<b>3</b>	-44,590.
<b>4</b>	Net assets or fund balances at beginning of year (must equal Part X, line 32, column (A))	<b>4</b>	158,586.
<b>5</b>	Net unrealized gains (losses) on investments	<b>5</b>	
<b>6</b>	Donated services and use of facilities	<b>6</b>	
<b>7</b>	Investment expenses	<b>7</b>	
<b>8</b>	Prior period adjustments	<b>8</b>	
<b>9</b>	Other changes in net assets or fund balances (explain on Schedule O)	<b>9</b>	0.
<b>10</b>	Net assets or fund balances at end of year. Combine lines 3 through 9 (must equal Part X, line 32, column (B))	<b>10</b>	113,996.

**Part XII Financial Statements and Reporting**

Check if Schedule O contains a response or note to any line in this Part XII.

		Yes	No
<b>1</b>	Accounting method used to prepare the Form 990: <input checked="" type="checkbox"/> Cash <input type="checkbox"/> Accrual <input type="checkbox"/> Other _____ If the organization changed its method of accounting from a prior year or checked "Other," explain on Schedule O.		
<b>2a</b>	Were the organization's financial statements compiled or reviewed by an independent accountant? If "Yes," check a box below to indicate whether the financial statements for the year were compiled or reviewed on a separate basis, consolidated basis, or both. <input type="checkbox"/> Separate basis <input type="checkbox"/> Consolidated basis <input type="checkbox"/> Both consolidated and separate basis		X
<b>b</b>	Were the organization's financial statements audited by an independent accountant? If "Yes," check a box below to indicate whether the financial statements for the year were audited on a separate basis, consolidated basis, or both. <input type="checkbox"/> Separate basis <input type="checkbox"/> Consolidated basis <input type="checkbox"/> Both consolidated and separate basis		X
<b>c</b>	If "Yes" to line 2a or 2b, does the organization have a committee that assumes responsibility for oversight of the audit, review, or compilation of its financial statements and selection of an independent accountant? If the organization changed either its oversight process or selection process during the tax year, explain on Schedule O.		
<b>3a</b>	As a result of a federal award, was the organization required to undergo an audit or audits as set forth in the Uniform Guidance, 2 C.F.R. Part 200, Subpart F?		X
<b>b</b>	If "Yes," did the organization undergo the required audit or audits? If the organization did not undergo the required audit or audits, explain why on Schedule O and describe any steps taken to undergo such audits		

**SCHEDULE A**  
**(Form 990)**

Department of the Treasury  
Internal Revenue Service

**Public Charity Status and Public Support**

Complete if the organization is a section 501(c)(3) organization or a section 4947(a)(1) nonexempt charitable trust.

Attach to Form 990 or Form 990-EZ.

Go to [www.irs.gov/Form990](http://www.irs.gov/Form990) for instructions and the latest information.

OMB No. 1545-0047

**2025**

**Open to Public Inspection**

Name of the organization <b>RECYCLED LIVES</b>	Employer identification number <b>46-3500882</b>
---	---

**Part I Reason for Public Charity Status.** (All organizations must complete this part.) See instructions.

The organization is not a private foundation because it is: (For lines 1 through 12, check only one box.)

- 1  A church, convention of churches, or association of churches described in **section 170(b)(1)(A)(i).**
- 2  A school described in **section 170(b)(1)(A)(ii).** (Attach Schedule E (Form 990).)
- 3  A hospital or a cooperative hospital service organization described in **section 170(b)(1)(A)(iii).**
- 4  A medical research organization operated in conjunction with a hospital described in **section 170(b)(1)(A)(iii).** Enter the hospital's name, city, and state: \_\_\_\_\_
- 5  An organization operated for the benefit of a college or university owned or operated by a governmental unit described in **section 170(b)(1)(A)(iv).** (Complete Part II.)
- 6  A federal, state, or local government or governmental unit described in **section 170(b)(1)(A)(v).**
- 7  An organization that normally receives a substantial part of its support from a governmental unit or from the general public described in **section 170(b)(1)(A)(vi).** (Complete Part II.)
- 8  A community trust described in **section 170(b)(1)(A)(vi).** (Complete Part II.)
- 9  An agricultural research organization described in **section 170(b)(1)(A)(ix)** operated in conjunction with a land-grant college or university or a non-land-grant college of agriculture (see instructions). Enter the name, city, and state of the college or university: \_\_\_\_\_
- 10  An organization that normally receives (1) more than 33-1/3% of its support from contributions, membership fees, and gross receipts from activities related to its exempt functions, subject to certain exceptions; and (2) no more than 33-1/3% of its support from gross investment income and unrelated business taxable income (less section 511 tax) from businesses acquired by the organization after June 30, 1975. See **section 509(a)(2).** (Complete Part III.)
- 11  An organization organized and operated exclusively to test for public safety. See **section 509(a)(4).**
- 12  An organization organized and operated exclusively for the benefit of, to perform the functions of, or to carry out the purposes of one or more publicly supported organizations described in **section 509(a)(1)** or **section 509(a)(2).** See **section 509(a)(3).** Check the box on lines 12a through 12d that describes the type of supporting organization and complete lines 12e, 12f, and 12g.
  - a  **Type I.** A supporting organization operated, supervised, or controlled by its supported organization(s), typically by giving the supported organization(s) the power to regularly appoint or elect a majority of the directors or trustees of the supporting organization. **You must complete Part IV, Sections A and B.**
  - b  **Type II.** A supporting organization supervised or controlled in connection with its supported organization(s), by having control or management of the supporting organization vested in the same persons that control or manage the supported organization(s). **You must complete Part IV, Sections A and C.**
  - c  **Type III functionally integrated.** A supporting organization operated in connection with, and functionally integrated with, its supported organization(s) (see instructions). **You must complete Part IV, Sections A, D, and E.**
  - d  **Type III non-functionally integrated.** A supporting organization operated in connection with its supported organization(s) that is not functionally integrated. The organization must generally satisfy a distribution requirement and an attentiveness requirement (see instructions). **You must complete Part IV, Sections A and D, and Part V.**
  - e  Check this box if the organization received a written determination from the IRS that it is a Type I, Type II, Type III functionally integrated, or Type III non-functionally integrated supporting organization.
  - f Enter the number of supported organizations .....
  - g Provide the following information about the supported organization(s).

(i) Name of supported organization	(ii) EIN	(iii) Type of organization (described on lines 1-10 above (see instructions))	(iv) Is the organization listed in your governing document?		(v) Amount of monetary support (see instructions)	(vi) Amount of other support (see instructions)
			Yes	No		
(A)						
(B)						
(C)						
(D)						
(E)						
<b>Total</b>						

Part II Support Schedule for Organizations Described in Sections 170(b)(1)(A)(iv) and 170(b)(1)(A)(vi)

(Complete only if you checked the box on line 5, 7, or 8 of Part I or if the organization failed to qualify under Part III. If the organization fails to qualify under the tests listed below, please complete Part III.)

Section A. Public Support

Table with 7 columns: (a) 2021, (b) 2022, (c) 2023, (d) 2024, (e) 2025, (f) Total. Rows include: 1 Gifts, grants, contributions, and membership fees received; 2 Tax revenues levied for the organization's benefit; 3 The value of services or facilities furnished by a governmental unit; 4 Total. Add lines 1 through 3; 5 The portion of total contributions by each person that exceeds 2%; 6 Public support. Subtract line 5 from line 4.

Section B. Total Support

Table with 7 columns: (a) 2021, (b) 2022, (c) 2023, (d) 2024, (e) 2025, (f) Total. Rows include: 7 Amounts from line 4; 8 Gross income from interest, dividends, payments received on securities loans, rents, royalties, and income from similar sources; 9 Net income from unrelated business activities; 10 Other income; 11 Total support. Add lines 7 through 10; 12 Gross receipts from related activities, etc. (see instructions); 13 First 5 years. If the Form 990 is for the organization's first, second, third, fourth, or fifth tax year as a section 501(c)(3) organization, check this box and stop here.

DO NOT MAIL

Section C. Computation of Public Support Percentage

Table with 3 columns: Description, Line Number, Percentage. Row 14: Public support percentage for 2025 (line 6, column (f), divided by line 11, column (f)). Row 15: Public support percentage from 2024 Schedule A, Part II, line 14.

16a 33-1/3% support test-2025. If the organization did not check the box on line 13, and line 14 is 33-1/3% or more, check this box and stop here. The organization qualifies as a publicly supported organization.

b 33-1/3% support test-2024. If the organization did not check a box on line 13 or 16a, and line 15 is 33-1/3% or more, check this box and stop here. The organization qualifies as a publicly supported organization.

17a 10%-facts-and-circumstances test-2025. If the organization did not check a box on line 13, 16a, or 16b, and line 14 is 10% or more, and if the organization meets the facts-and-circumstances test, check this box and stop here. Explain in Part VI how the organization meets the facts-and-circumstances test. The organization qualifies as a publicly supported organization.

b 10%-facts-and-circumstances test-2024. If the organization did not check a box on line 13, 16a, 16b, or 17a, and line 15 is 10% or more, and if the organization meets the facts-and-circumstances test, check this box and stop here. Explain in Part VI how the organization meets the facts-and-circumstances test. The organization qualifies as a publicly supported organization.

18 Private foundation. If the organization did not check a box on line 13, 16a, 16b, 17a, or 17b, check this box and see instructions.

**Part III Support Schedule for Organizations Described in Section 509(a)(2)**

(Complete only if you checked the box on line 10 of Part I or if the organization failed to qualify under Part II. If the organization fails to qualify under the tests listed below, please complete Part II.)

**Section A. Public Support**

Calendar year (or fiscal year beginning in)	(a) 2021	(b) 2022	(c) 2023	(d) 2024	(e) 2025	(f) Total
<b>1</b> Gifts, grants, contributions, and membership fees received. (Do not include any "unusual grants.")	220,337.	176,152.	189,218.	309,557.	188,331.	1,083,595.
<b>2</b> Gross receipts from admissions, merchandise sold or services performed, or facilities furnished in any activity that is related to the organization's tax-exempt purpose						0.
<b>3</b> Gross receipts from activities that are not an unrelated trade or business under section 513						0.
<b>4</b> Tax revenues levied for the organization's benefit and either paid to or expended on its behalf						0.
<b>5</b> The value of services or facilities furnished by a governmental unit to the organization without charge						0.
<b>6 Total.</b> Add lines 1 through 5	220,337.	176,152.	189,218.	309,557.	188,331.	1,083,595.
<b>7a</b> Amounts included on lines 1, 2, and 3 received from disqualified persons	0.	0.	0.	0.	0.	0.
<b>b</b> Amounts included on lines 2 and 3 received from other than disqualified persons that exceed the greater of \$5,000 or 1% of the amount on line 13 for the year	0.	0.	0.	0.	0.	0.
<b>c</b> Add lines 7a and 7b	0.	0.	0.	0.	0.	0.
<b>8 Public support.</b> (Subtract line 7c from line 6.)						1,083,595.

**Section B. Total Support**

Calendar year (or fiscal year beginning in)	(a) 2021	(b) 2022	(c) 2023	(d) 2024	(e) 2025	(f) Total
<b>9</b> Amounts from line 6	220,337	176,152.	189,218.	309,557.	188,331.	1,083,595.
<b>10a</b> Gross income from interest, dividends, payments received on securities loans, rents, royalties, and income from similar sources		8.	81.	1,386.	4,287.	5,762.
<b>b</b> Unrelated business taxable income (less section 511 taxes) from businesses acquired after June 30, 1975						0.
<b>c</b> Add lines 10a and 10b	0.	8.	81.	1,386.	4,287.	5,762.
<b>11</b> Net income from unrelated business activities not included on line 10b, whether or not the business is regularly carried on						0.
<b>12</b> Other income. Do not include gain or loss from the sale of capital assets (Explain in Part VI.)						0.
<b>13 Total support.</b> (Add lines 9, 10c, 11, and 12.)	220,337.	176,160.	189,299.	310,943.	192,618.	1,089,357.

**14 First 5 years.** If the Form 990 is for the organization's first, second, third, fourth, or fifth tax year as a section 501(c)(3) organization, check this box and **stop here**

**Section C. Computation of Public Support Percentage**

<b>15</b> Public support percentage for 2025 (line 8, column (f), divided by line 13, column (f))	<b>15</b>	99.47 %
<b>16</b> Public support percentage from 2024 Schedule A, Part III, line 15	<b>16</b>	97.66 %

**Section D. Computation of Investment Income Percentage**

<b>17</b> Investment income percentage for 2025 (line 10c, column (f), divided by line 13, column (f))	<b>17</b>	0.53 %
<b>18</b> Investment income percentage from 2024 Schedule A, Part III, line 17	<b>18</b>	0.14 %

**19a 33-1/3% support tests—2025.** If the organization did not check the box on line 14, and line 15 is more than 33-1/3%, and line 17 is not more than 33-1/3%, check this box and **stop here**. The organization qualifies as a publicly supported organization

**b 33-1/3% support tests—2024.** If the organization did not check a box on line 14 or line 19a, and line 16 is more than 33-1/3%, and line 18 is not more than 33-1/3%, check this box and **stop here**. The organization qualifies as a publicly supported organization

**20 Private foundation.** If the organization did not check a box on line 14, 19a, or 19b, check this box and see instructions

**Part IV Supporting Organizations**

(Complete only if you checked a box on line 12 of Part I. If you checked box 12a, Part I, complete Sections A and B. If you checked box 12b, Part I, complete Sections A and C. If you checked box 12c, Part I, complete Sections A, D, and E. If you checked box 12d, Part I, complete Sections A and D, and complete Part V.)

**Section A. All Supporting Organizations**

	Yes	No
<b>1</b> Are all of the organization's supported organizations listed by name in the organization's governing documents? If "No," describe in <b>Part VI</b> how the supported organizations are designated. If designated by class or purpose, describe the designation. If historic and continuing relationship, explain.		
<b>2</b> Did the organization have any supported organization that does not have an IRS determination of status under section 509(a)(1) or (2)? If "Yes," explain in <b>Part VI</b> how the organization determined that the supported organization was described in section 509(a)(1) or (2).		
<b>3a</b> Did the organization have a supported organization described in section 501(c)(4), (5), or (6)? If "Yes," answer lines 3b and 3c below.		
<b>b</b> Did the organization confirm that each supported organization qualified under section 501(c)(4), (5), or (6) and satisfied the public support tests under section 509(a)(2)? If "Yes," describe in <b>Part VI</b> when and how the organization made the determination.		
<b>3c</b> Did the organization ensure that all support to such organizations was used exclusively for section 170(c)(2)(B) purposes? If "Yes," explain in <b>Part VI</b> what controls the organization put in place to ensure such use.		
<b>4a</b> Was any supported organization not organized in the United States ("foreign supported organization")? If "Yes" and if you checked box 12a or 12b in Part I, answer lines 4b and 4c below.		
<b>b</b> Did the organization have ultimate control and discretion in deciding whether to make grants to the foreign supported organization? If "Yes," describe in <b>Part VI</b> how the organization had such control and discretion despite being controlled or supervised by or in connection with its supported organizations.		
<b>c</b> Did the organization support any foreign supported organization that does not have an IRS determination under sections 501(c)(3) and 509(a)(1) or (2)? If "Yes," explain in <b>Part VI</b> what controls the organization used to ensure that all support to the foreign supported organization was used exclusively for section 170(c)(2)(B) purposes.		
<b>5a</b> Did the organization add, substitute, or remove any supported organizations during the tax year? If "Yes," answer lines 5b and 5c below (if applicable). Also, provide detail in <b>Part VI</b> , including (i) the names and EIN numbers of the supported organizations added, substituted, or removed; (ii) the reasons for each such action; (iii) the authority under the organization's organizing document authorizing such action; and (iv) how the action was accomplished (such as by amendment to the organizing document).		
<b>b Type I or Type II only.</b> Was any added or substituted supported organization part of a class already designated in the organization's organizing document?		
<b>c Substitutions only.</b> Was the substitution the result of an event beyond the organization's control?		
<b>6</b> Did the organization provide support (whether in the form of grants or the provision of services or facilities) to anyone other than (i) its supported organizations, (ii) individuals that are part of the charitable class benefited by one or more of its supported organizations, or (iii) other supporting organizations that also support or benefit one or more of the filing organization's supported organizations? If "Yes," provide detail in <b>Part VI</b> .		
<b>7</b> Did the organization provide a grant, loan, compensation, or other similar payment to a substantial contributor (as defined in section 4958(c)(3)(C)), a family member of a substantial contributor, or a 35% controlled entity with regard to a substantial contributor? If "Yes," complete Part I of Schedule L (Form 990).		
<b>8</b> Did the organization make a loan to a disqualified person (as defined in section 4958) not described on line 7? If "Yes," complete Part I of Schedule L (Form 990).		
<b>9a</b> Was the organization controlled directly or indirectly at any time during the tax year by one or more disqualified persons, as defined in section 4946 (other than foundation managers and organizations described in section 509(a)(1) or (2))? If "Yes," provide detail in <b>Part VI</b> .		
<b>b</b> Did one or more disqualified persons (as defined on line 9a) hold a controlling interest in any entity in which the supporting organization had an interest? If "Yes," provide detail in <b>Part VI</b> .		
<b>c</b> Did a disqualified person (as defined on line 9a) have an ownership interest in, or derive any personal benefit from, assets in which the supporting organization also had an interest? If "Yes," provide detail in <b>Part VI</b> .		
<b>10a</b> Was the organization subject to the excess business holdings rules of section 4943 because of section 4943(f) (regarding certain Type II supporting organizations, and all Type III non-functionally integrated supporting organizations)? If "Yes," answer line 10b below.		
<b>b</b> Did the organization have any excess business holdings in the tax year? (Use Schedule C, Form 4720, to determine whether the organization had excess business holdings.)		

**Part IV Supporting Organizations** (continued)

		Yes	No
11	Has the organization accepted a gift or contribution from any of the following persons?		
a	A person who directly or indirectly controls, either alone or together with persons described on lines 11b and 11c below, the governing body of a supported organization?	11a	
b	A family member of a person described on line 11a above?	11b	
c	A 35% controlled entity of a person described on line 11a or 11b above? <i>If "Yes" to line 11a, 11b, or 11c, provide detail in Part VI.</i>	11c	

**Section B. Type I Supporting Organizations**

		Yes	No
1	Did the governing body, members of the governing body, officers acting in their official capacity, or membership of one or more supported organizations have the power to regularly appoint or elect at least a majority of the organization's officers, directors, or trustees at all times during the tax year? <i>If "No," describe in Part VI how the supported organization(s) effectively operated, supervised, or controlled the organization's activities. If the organization had more than one supported organization, describe how the powers to appoint and/or remove officers, directors, or trustees were allocated among the supported organizations and what conditions or restrictions, if any, applied to such powers during the tax year.</i>	1	
2	Did the organization operate for the benefit of any supported organization other than the supported organization(s) that operated, supervised, or controlled the supporting organization? <i>If "Yes," explain in Part VI how providing such benefit carried out the purposes of the supported organization(s) that operated, supervised, or controlled the supporting organization.</i>	2	

**Section C. Type II Supporting Organizations**

		Yes	No
1	Were a majority of the organization's directors or trustees during the tax year also a majority of the directors or trustees of each of the organization's supported organization(s)? <i>If "No," describe in Part VI how control or management of the supporting organization was vested in the same persons that controlled or managed the supported organization(s).</i>	1	

**Section D. All Type III Supporting Organizations**

		Yes	No
1	Did the organization provide to each of its supported organizations, by the last day of the fifth month of the organization's tax year, (i) a written notice describing the type and amount of support provided during the prior tax year, (ii) a copy of the Form 990 that was most recently filed as of the date of notification, and (iii) copies of the organization's governing documents in effect on the date of notification, to the extent not previously provided?	1	
2	Were any of the organization's officers, directors, or trustees either (i) appointed or elected by the supported organization(s), or (ii) serving on the governing body of a supported organization? <i>If "No," explain in Part VI how the organization maintained a close and continuous working relationship with the supported organization(s).</i>	2	
3	By reason of the relationship described on line 2, above, did the organization's supported organizations have a significant voice in the organization's investment policies and in directing the use of the organization's income or assets at all times during the tax year? <i>If "Yes," describe in Part VI the role the organization's supported organizations played in this regard.</i>	3	

**Section E. Type III Functionally Integrated Supporting Organizations**

1	Check the box next to the method that the organization used to satisfy the Integral Part Test during the year (see instructions).		
a	<input type="checkbox"/> The organization satisfied the Activities Test. Complete line 2 below.		
b	<input type="checkbox"/> The organization is the parent of each of its supported organizations. Complete line 3 below.		
c	<input type="checkbox"/> The organization supported a governmental supported organization. Describe in Part VI how you supported a governmental supported organization (see instructions).		
2	Activities Test. Answer lines 2a and 2b below.		
a	Did substantially all of the organization's activities during the tax year directly further the exempt purposes of its supported organization(s)? <i>If "Yes," then in Part VI identify those supported organizations and explain how these activities directly furthered their exempt purposes, how the organization was responsive to each of its supported organizations, and how the organization determined that these activities constituted substantially all of its activities.</i>	2a	
b	Did the activities described on line 2a, above, constitute activities that, but for the organization's involvement, one or more of the organization's supported organization(s) would have been engaged in? <i>If "Yes," explain in Part VI the reasons for the organization's position that its supported organization(s) would have engaged in these activities but for the organization's involvement.</i>	2b	
3	Parent of Supported Organizations. Answer lines 3a, 3b, and 3c below.		
a	Are the organization and its supported organization(s) part of an integrated system (for example, a hospital system)? <i>If "Yes," provide details in Part VI.</i>	3a	
b	Did the organization direct the policies, programs, and activities of each of its supported organizations? <i>If "Yes," describe in Part VI the role played by the organization in this regard.</i>	3b	
c	Did the organization have the power to regularly appoint or elect (and remove) a majority of the officers, directors, or trustees of each of the supported organizations? <i>If "Yes" or "No," provide details in Part VI.</i>	3c	

**Part V Type III Non-Functionally Integrated 509(a)(3) Supporting Organizations**

1  Check here if the organization satisfied the Integral Part Test as a qualifying trust on Nov. 20, 1970 (explain in Part VI). **See instructions.** All other Type III non-functionally integrated supporting organizations must complete Sections A through E.

<b>Section A – Adjusted Net Income</b>		(A) Prior Year	(B) Current Year (optional)
1	Net short-term capital gain	1	
2	Recoveries of prior-year distributions	2	
3	Other gross income (see instructions)	3	
4	Add lines 1 through 3.	4	
5	Depreciation and depletion	5	
6	Portion of operating expenses paid or incurred for production or collection of gross income or for management, conservation, or maintenance of property held for production of income (see instructions)	6	
7	Other expenses (see instructions)	7	
8	<b>Adjusted Net Income</b> (subtract lines 5, 6, and 7 from line 4)	8	

<b>Section B – Minimum Asset Amount</b>		(A) Prior Year	(B) Current Year (optional)
1	Aggregate fair market value of all non-exempt-use assets (see instructions for short tax year or assets held for part of year):		
a	Average monthly value of securities	1a	
b	Average monthly cash balances	1b	
c	Fair market value of other non-exempt-use assets	1c	
d	<b>Total</b> (add lines 1a, 1b, and 1c)	1d	
e	<b>Discount</b> claimed for blockage or other factors (explain in detail in Part VI):		
2	Acquisition indebtedness applicable to non-exempt-use assets	2	
3	Subtract line 2 from line 1d.	3	
4	Cash deemed held for exempt use. Enter 0.015 of line 3 (for greater amount, see instructions).	4	
5	Net value of non-exempt-use assets (subtract line 4 from line 3)	5	
6	Multiply line 5 by 0.035.	6	
7	Recoveries of prior-year distributions	7	
8	<b>Minimum Asset Amount</b> (add line 7 to line 6)	8	

<b>Section C – Distributable Amount</b>		(A) Prior Year	(B) Current Year
1	Adjusted net income for prior year (from Section A, line 8, column A)	1	
2	Enter 0.85 of line 1.	2	
3	Minimum asset amount for prior year (from Section B, line 8, column A)	3	
4	Enter greater of line 2 or line 3.	4	
5	Income tax imposed in prior year	5	
6	<b>Distributable Amount.</b> Subtract line 5 from line 4, unless subject to emergency temporary reduction (see instructions).	6	

7  Check here if the current year is the organization's first as a non-functionally integrated Type III supporting organization (see instructions).

**Part V Type III Non-Functionally Integrated 509(a)(3) Supporting Organizations** (continued)

<b>Section D – Distributions</b>		<b>Current Year</b>
<b>1</b>	Amounts paid to supported organizations to accomplish exempt purposes	<b>1</b>
<b>2</b>	Amounts paid to perform activity that directly furthers exempt purposes of supported organizations, in excess of income from activity	<b>2</b>
<b>3</b>	Administrative expenses paid to accomplish exempt purposes of supported organizations	<b>3</b>
<b>4</b>	Amounts paid to acquire exempt-use assets	<b>4</b>
<b>5</b>	Qualified set-aside amounts (prior IRS approval required – provide details in <b>Part VI</b> )	<b>5</b>
<b>6</b>	<b>Total annual distributions.</b> Add lines 1 through 5.	<b>6</b>
<b>7</b>	Distributions to attentive supported organizations to which the organization is responsive (provide details in <b>Part VI</b> ). See instructions.	<b>7</b>
<b>8</b>	Distributable amount for 2025 from Section C, line 6	<b>8</b>
<b>9</b>	Line 7 amount divided by line 8 amount	<b>9</b>

<b>Section E – Distribution Allocations (see instructions)</b>	<b>(i) Excess Distributions</b>	<b>(ii) Underdistributions Pre-2025</b>	<b>(iii) Distributable Amount for 2025</b>
<b>1</b> Distributable amount for 2025 from Section C, line 6			
<b>2</b> Underdistributions, if any, for years prior to 2025 (reasonable cause required – explain in <b>Part VI</b> ). See instructions.			
<b>3</b> Excess distributions carryover, if any, to 2025			
<b>a</b> From 2020 . . . . .			
<b>b</b> From 2021 . . . . .			
<b>c</b> From 2022 . . . . .			
<b>d</b> From 2023 . . . . .			
<b>e</b> From 2024 . . . . .			
<b>f</b> Total of lines 3a through 3e			
<b>g</b> Applied to underdistributions of prior years			
<b>h</b> Applied to 2025 distributable amount			
<b>i</b> Carryover from 2020 not applied (see instructions)			
<b>j</b> Remainder. Subtract lines 3g, 3h, and 3i from line 3f.			
<b>4</b> Distributions for 2025 from Section D, line 6: \$			
<b>a</b> Applied to underdistributions of prior years			
<b>b</b> Applied to 2025 distributable amount			
<b>c</b> Remainder. Subtract lines 4a and 4b from line 4.			
<b>5</b> Remaining underdistributions for years prior to 2025, if any. Subtract lines 3g and 4a from line 2. For result greater than zero, explain in <b>Part VI</b> . See instructions.			
<b>6</b> Remaining underdistributions for 2025. Subtract lines 3h and 4b from line 1. For result greater than zero, explain in <b>Part VI</b> . See instructions.			
<b>7</b> <b>Excess distributions carryover to 2026.</b> Add lines 3j and 4c.			
<b>8</b> Breakdown of line 7:			
<b>a</b> Excess from 2021 . . . . .			
<b>b</b> Excess from 2022 . . . . .			
<b>c</b> Excess from 2023 . . . . .			
<b>d</b> Excess from 2024 . . . . .			
<b>e</b> Excess from 2025 . . . . .			

DO NOT MAIL

BAA

Schedule A (Form 990) 2025

**Part VI**

**Supplemental Information.** Provide the explanations required by Part II, line 10; Part II, line 17a or 17b; Part III, line 12; Part IV, Section A, lines 1, 2, 3b, 3c, 4b, 4c, 5a, 6, 9a, 9b, 9c, 11a, 11b, and 11c; Part IV, Section B, lines 1 and 2; Part IV, Section C, line 1; Part IV, Section D, lines 2 and 3; Part IV, Section E, lines 1c, 2a, 2b, 3a, 3b, and 3c; Part V, line 1; Part V, Section B, line 1e; Part V, Section D, lines 5 and 7; and Part V, Section E, lines 2, 5, and 6. Also complete this part for any additional information. (See instructions.)

DO NOT MAIL

SCHEDULE D (Form 990)

(Rev. December 2024)

Department of the Treasury Internal Revenue Service

Supplemental Financial Statements

Complete if the organization answered "Yes" on Form 990, Part IV, line 6, 7, 8, 9, 10, 11a, 11b, 11c, 11d, 11e, 11f, 12a, or 12b.

Attach to Form 990.

Go to www.irs.gov/Form990 for instructions and the latest information.

OMB No. 1545-0047

Open to Public Inspection

Name of the organization

Employer identification number

RECYCLED LIVES

46-3500882

Part I Organizations Maintaining Donor Advised Funds or Other Similar Funds or Accounts

Complete if the organization answered "Yes" on Form 990, Part IV, line 6.

Table with 3 columns: Question number, (a) Donor advised funds, (b) Funds and other accounts. Rows 1-4: Total number at end of year, Aggregate value of contributions to (during year), Aggregate value of grants from (during year), Aggregate value at end of year.

- 5 Did the organization inform all donors and donor advisors in writing that the assets held in donor advised funds are the organization's property, subject to the organization's exclusive legal control?
6 Did the organization inform all grantees, donors, and donor advisors in writing that grant funds can be used only for charitable purposes and not for the benefit of the donor or donor advisor, or for any other purpose conferring impermissible private benefit?

Part II Conservation Easements

Complete if the organization answered "Yes" on Form 990, Part IV, line 7.

- 1 Purpose(s) of conservation easements held by the organization (check all that apply).
2 Complete lines 2a through 2d if the organization held a qualified conservation contribution in the form of a conservation easement on the last day of the tax year.

Table with 2 columns: Question number, Held at the End of the Tax Year. Rows 2a-2d: Total number of conservation easements, Total acreage restricted by conservation easements, Number of conservation easements on a certified historic structure included on line 2a, Number of conservation easements included on line 2c acquired after July 25, 2006, and not on a historic structure listed in the National Register.

- 3 Number of conservation easements modified, transferred, released, extinguished, or terminated by the organization during the tax year
4 Number of states where property subject to conservation easement is located
5 Does the organization have a written policy regarding the periodic monitoring, inspection, handling of violations, and enforcement of the conservation easements it holds?
6 Staff and volunteer hours devoted to monitoring, inspecting, handling of violations, and enforcing conservation easements during the year
7 Amount of expenses incurred in monitoring, inspecting, handling of violations, and enforcing conservation easements during the year
8 Does each conservation easement reported on line 2d above satisfy the requirements of section 170(h)(4)(B)(i) and section 170(h)(4)(B)(ii)?
9 In Part XIII, describe how the organization reports conservation easements in its revenue and expense statement and balance sheet, and include, if applicable, the text of the footnote to the organization's financial statements that describes the organization's accounting for conservation easements.

Part III Organizations Maintaining Collections of Art, Historical Treasures, or Other Similar Assets

Complete if the organization answered "Yes" on Form 990, Part IV, line 8.

- 1a If the organization elected, as permitted under FASB ASC 958, not to report in its revenue statement and balance sheet works of art, historical treasures, or other similar assets held for public exhibition, education, or research in furtherance of public service, provide in Part XIII the text of the footnote to its financial statements that describes these items.
b If the organization elected, as permitted under FASB ASC 958, to report in its revenue statement and balance sheet works of art, historical treasures, or other similar assets held for public exhibition, education, or research in furtherance of public service, provide the following amounts relating to these items.
2 If the organization received or held works of art, historical treasures, or other similar assets for financial gain, provide the following amounts required to be reported under FASB ASC 958 relating to these items.

**Part III Organizations Maintaining Collections of Art, Historical Treasures, or Other Similar Assets** *(continued)*

**3** Using the organization's acquisition, accession, and other records, check any of the following that make significant use of its collection items (check all that apply).

- a**  Public exhibition
- b**  Scholarly research
- c**  Preservation for future generations
- d**  Loan or exchange program
- e**  Other \_\_\_\_\_

**4** Provide a description of the organization's collections and explain how they further the organization's exempt purpose in Part XIII.

**5** During the year, did the organization solicit or receive donations of art, historical treasures, or other similar assets to be sold to raise funds rather than to be maintained as part of the organization's collection?  Yes  No

**Part IV Escrow and Custodial Arrangements**

Complete if the organization answered "Yes" on Form 990, Part IV, line 9, or reported an amount on Form 990, Part X, line 21.

**1a** Is the organization an agent, trustee, custodian, or other intermediary for contributions or other assets not included on Form 990, Part X?  Yes  No

**b** If "Yes," explain the arrangement in Part XIII and complete the following table.

	Amount
<b>c</b> Beginning balance	<b>1c</b>
<b>d</b> Additions during the year	<b>1d</b>
<b>e</b> Distributions during the year	<b>1e</b>
<b>f</b> Ending balance	<b>1f</b>

**2a** Did the organization include an amount on Form 990, Part X, line 21, for escrow or custodial account liability?  Yes  No

**b** If "Yes," explain the arrangement in Part XIII. Check here if the explanation has been provided in Part XIII.

**Part V Endowment Funds**

Complete if the organization answered "Yes" on Form 990, Part IV, line 10.

	(a) Current year	(b) Prior year	(c) Two years back	(d) Three years back	(e) Four years back
<b>1a</b> Beginning of year balance					
<b>b</b> Contributions					
<b>c</b> Net investment earnings, gains, and losses					
<b>d</b> Grants or scholarships					
<b>e</b> Other expenditures for facilities and programs					
<b>f</b> Administrative expenses					
<b>g</b> End of year balance					

**2** Provide the estimated percentage of the current year end balance (line 1g, column (a)) held as:

- a** Board designated or quasi-endowment \_\_\_\_\_ %
- b** Permanent endowment \_\_\_\_\_ %
- c** Term endowment \_\_\_\_\_ %

The percentages on lines 2a, 2b, and 2c should equal 100%.

**3a** Are there endowment funds not in the possession of the organization that are held and administered for the organization by:

	Yes	No
<b>(i)</b> Unrelated organizations?	<b>3a(i)</b>	
<b>(ii)</b> Related organizations?	<b>3a(ii)</b>	
<b>b</b> If "Yes" on line 3a(ii), are the related organizations listed as required on Schedule R?	<b>3b</b>	

**4** Describe in Part XIII the intended uses of the organization's endowment funds.

**Part VI Land, Buildings, and Equipment**

Complete if the organization answered "Yes" on Form 990, Part IV, line 11a. See Form 990, Part X, line 10.

Description of property	(a) Cost or other basis (investment)	(b) Cost or other basis (other)	(c) Accumulated depreciation	(d) Book value
<b>1a</b> Land				
<b>b</b> Buildings				
<b>c</b> Leasehold improvements				
<b>d</b> Equipment		23,033.	23,033.	0.
<b>e</b> Other				

**Total.** Add lines 1a through 1e. (Column (d) must equal Form 990, Part X, line 10c, column (B)). 0.

<b>Part VII Investments – Other Securities</b>		N/A
Complete if the organization answered "Yes" on Form 990, Part IV, line 11b. See Form 990, Part X, line 12.		
(a) Description of security or category (including name of security)	(b) Book value	(c) Method of valuation: Cost or end-of-year market value
(1) Financial derivatives		
(2) Closely held equity interests		
(3) Other		
(A) -----		
(B) -----		
(C) -----		
(D) -----		
(E) -----		
(F) -----		
(G) -----		
(H) -----		
<b>Total.</b> (Column (b) must equal Form 990, Part X, line 12, column (B))		

<b>Part VIII Investments – Program Related</b>		N/A
Complete if the organization answered "Yes" on Form 990, Part IV, line 11c. See Form 990, Part X, line 13.		
(a) Description of investment	(b) Book value	(c) Method of valuation: Cost or end-of-year market value
(1)		
(2)		
(3)		
(4)		
(5)		
(6)		
(7)		
(8)		
(9)		
<b>Total.</b> (Column (b) must equal Form 990, Part X, line 13, column (B))		

<b>Part IX Other Assets</b>		N/A
Complete if the organization answered "Yes" on Form 990, Part IV, line 11d. See Form 990, Part X, line 15.		
(a) Description	(b) Book value	
(1)		
(2)		
(3)		
(4)		
(5)		
(6)		
(7)		
(8)		
(9)		
<b>Total.</b> (Column (b) must equal Form 990, Part X, line 15, column (B))		

<b>Part X Other Liabilities</b>	
Complete if the organization answered "Yes" on Form 990, Part IV, line 11e or 11f. See Form 990, Part X, line 25.	
1. (a) Description of liability	(b) Book value
(1) Federal income taxes	
(2) PAYROLL LIABILITIES	2,757.
(3)	
(4)	
(5)	
(6)	
(7)	
(8)	
(9)	
<b>Total.</b> (Column (b) must equal Form 990, Part X, line 25, column (B))	2,757.

**2.** Liability for uncertain tax positions. In Part XIII, provide the text of the footnote to the organization's financial statements that reports the organization's liability for uncertain tax positions under FASB ASC 740. Check here if the text of the footnote has been provided in Part XIII.

**Part XI Reconciliation of Revenue per Audited Financial Statements With Revenue per Return** N/A

Complete if the organization answered "Yes" on Form 990, Part IV, line 12a.

<b>1</b>	Total revenue, gains, and other support per audited financial statements		<b>1</b>	
<b>2</b>	Amounts included on line 1 but not on Form 990, Part VIII, line 12:			
	<b>a</b> Net unrealized gains (losses) on investments	<b>2a</b>		
	<b>b</b> Donated services and use of facilities	<b>2b</b>		
	<b>c</b> Recoveries of prior year grants	<b>2c</b>		
	<b>d</b> Other (Describe in Part XIII.)	<b>2d</b>		
	<b>e</b> Add lines <b>2a</b> through <b>2d</b>		<b>2e</b>	
<b>3</b>	Subtract line <b>2e</b> from line <b>1</b>		<b>3</b>	
<b>4</b>	Amounts included on Form 990, Part VIII, line 12, but not on line 1:			
	<b>a</b> Investment expenses not included on Form 990, Part VIII, line 7b	<b>4a</b>		
	<b>b</b> Other (Describe in Part XIII.)	<b>4b</b>		
	<b>c</b> Add lines <b>4a</b> and <b>4b</b>		<b>4c</b>	
<b>5</b>	Total revenue. Add lines <b>3</b> and <b>4c</b> . (This must equal Form 990, Part I, line 12.)		<b>5</b>	

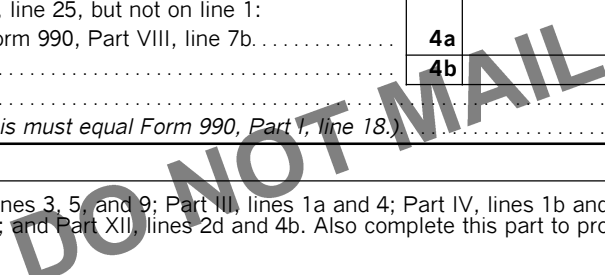
**Part XII Reconciliation of Expenses per Audited Financial Statements With Expenses per Return** N/A

Complete if the organization answered "Yes" on Form 990, Part IV, line 12a.

<b>1</b>	Total expenses and losses per audited financial statements		<b>1</b>	
<b>2</b>	Amounts included on line 1 but not on Form 990, Part IX, line 25:			
	<b>a</b> Donated services and use of facilities	<b>2a</b>		
	<b>b</b> Prior year adjustments	<b>2b</b>		
	<b>c</b> Other losses	<b>2c</b>		
	<b>d</b> Other (Describe in Part XIII.)	<b>2d</b>		
	<b>e</b> Add lines <b>2a</b> through <b>2d</b>		<b>2e</b>	
<b>3</b>	Subtract line <b>2e</b> from line <b>1</b>		<b>3</b>	
<b>4</b>	Amounts included on Form 990, Part IX, line 25, but not on line 1:			
	<b>a</b> Investment expenses not included on Form 990, Part VIII, line 7b	<b>4a</b>		
	<b>b</b> Other (Describe in Part XIII.)	<b>4b</b>		
	<b>c</b> Add lines <b>4a</b> and <b>4b</b>		<b>4c</b>	
<b>5</b>	Total expenses. Add lines <b>3</b> and <b>4c</b> . (This must equal Form 990, Part I, line 18.)		<b>5</b>	

**Part XIII Supplemental Information**

Provide the descriptions required for Part II, lines 3, 5, and 9; Part III, lines 1a and 4; Part IV, lines 1b and 2b; Part V, line 4; Part X, line 2; Part XI, lines 2d and 4b; and Part XII, lines 2d and 4b. Also complete this part to provide any additional information.



**SCHEDULE F  
(Form 990)**

(Rev. December 2024)  
Department of the Treasury  
Internal Revenue Service

**Statement of Activities Outside the United States**  
Complete if the organization answered "Yes" on Form 990, Part IV, line 14b, 15, or 16.  
Attach to Form 990.

OMB No. 1545-0047

Go to [www.irs.gov/Form990](http://www.irs.gov/Form990) for instructions and the latest information.

**Open to Public  
Inspection**

Name of the organization <b>RECYCLED LIVES</b>	Employer identification number <b>46-3500882</b>
---	---

**Part I** **General Information on Activities Outside the United States.** Complete if the organization answered "Yes" on Form 990, Part IV, line 14b.

- 1 **For grantmakers.** Does the organization maintain records to substantiate the amount of its grants and other assistance, the grantees' eligibility for the grants or assistance, and the selection criteria used to award the grants or assistance? . . .  **Yes**  **No**
- 2 **For grantmakers.** Describe in Part V the organization's procedures for monitoring the use of its grants and other assistance outside the United States. **PART V**
- 3 **Activities per Region.** (The following Part I, line 3 table can be duplicated if additional space is needed.)

(a) Region	(b) Number of offices in the region	(c) Number of employees, agents, and independent contractors in the region	(d) Activities conducted in the region (by type) (such as, fundraising, program services, investments, grants to recipients located in the region)	(e) If activity listed in (d) is a program service, describe specific type of service(s) in the region	(f) Total expenditures for and investments in the region
					PT V
(1) GUATEMALA			FOOD DISTRIBUTION	FOOD DISTRIBUTION	38,071.
(2) GUATEMALA			HOME CONSTRUCTION/IMPROVEMENTS	HOME CONSTRUCTION/IMPROVEMENTS	
(3) GUATEMALA			NTS FAMILY & INDIVIDUAL CARE	ROVEMENTS FAMILY & INDIVIDUAL CARE	47,819.
(4) GUATEMALA			CARE	INDIVIDUAL CARE	43,930.
(5)					
(6)					
(7)					
(8)					
(9)					
(10)					
(11)					
(12)					
(13)					
(14)					
(15)					
(16)					
(17)					
<b>3a</b> Subtotal . . . . .					129,820.
<b>b</b> Total from continuation sheets to Part I . . . . .					
<b>c</b> Totals (add lines 3a and 3b) . . . . .	0	0			129,820.



**Part III Grants and Other Assistance to Individuals Outside the United States.** Complete if the organization answered "Yes" on Form 990, Part IV, line 16. Part III can be duplicated if additional space is needed.

(a) Type of grant or assistance	(b) Region	(c) Number of recipients	(d) Amount of cash grant	(e) Manner of cash disbursement	(f) Amount of noncash assistance	(g) Description of noncash assistance	(h) Method of valuation (book, FMV, appraisal, other)
(1)							
(2)							
(3)							
(4)							
(5)							
(6)							
(7)							
(8)							
(9)							
(10)							
(11)							
(12)							
(13)							
(14)							
(15)							
(16)							
(17)							
(18)							

DO NOT MAIL

**Part IV Foreign Forms**

- 1 Was the organization a U.S. transferor of property to a foreign corporation during the tax year? *If "Yes," the organization may be required to file Form 926, Return by a U.S. Transferor of Property to a Foreign Corporation (see the Instructions for Form 926).* .....  Yes  No
  
- 2 Did the organization have an interest in a foreign trust during the tax year? *If "Yes," the organization may be required to separately file Form 3520, Annual Return To Report Transactions With Foreign Trusts and Receipt of Certain Foreign Gifts, and/or Form 3520-A, Annual Information Return of Foreign Trust With a U.S. Owner (see the Instructions for Forms 3520 and 3520-A; don't file with Form 990).* .....  Yes  No
  
- 3 Did the organization have an ownership interest in a foreign corporation during the tax year? *If "Yes," the organization may be required to file Form 5471, Information Return of U.S. Persons With Respect to Certain Foreign Corporations (see the Instructions for Form 5471).* .....  Yes  No
  
- 4 Was the organization a direct or indirect shareholder of a passive foreign investment company or a qualified electing fund during the tax year? *If "Yes," the organization may be required to file Form 8621, Information Return by a Shareholder of a Passive Foreign Investment Company or Qualified Electing Fund (see the Instructions for Form 8621).* .....  Yes  No
  
- 5 Did the organization have an ownership interest in a foreign partnership during the tax year? *If "Yes," the organization may be required to file Form 8865, Return of U.S. Persons With Respect to Certain Foreign Partnerships (see the Instructions for Form 8865).* .....  Yes  No
  
- 6 Did the organization have any operations in or related to any boycotting countries during the tax year? *If "Yes," the organization may be required to separately file Form 5713, International Boycott Report (see the Instructions for Form 5713; don't file with Form 990).* .....  Yes  No

DO NOT MAIL

**Part V Supplemental Information**

Provide the information required by Part I, line 2 (monitoring of funds); Part I, line 3, column (f) (accounting method; amounts of investments vs. expenditures per region); Part II, line 1 (accounting method); Part III (accounting method); and Part III, column (c) (estimated number of recipients), as applicable. Also complete this part to provide any additional information. See instructions.

**PART I, LINE 2 - GRANTMAKERS EXPLANATION FOR MONITORING USE OF FUNDS OUTSIDE US**

THE BOARD APPROVES AND MONITORS.

**PART I, LINE 3F - METHOD OF ACCOUNTING**

CASH-BASIS

DO NOT MAIL

**SCHEDULE O  
(Form 990)**

(Rev. December 2024)

Department of the Treasury  
Internal Revenue Service

Name of the organization

**Supplemental Information to Form 990 or 990-EZ**

Complete to provide information for responses to specific questions on  
Form 990 or 990-EZ or to provide any additional information.  
Attach to Form 990 or Form 990-EZ.

Go to [www.irs.gov/Form990](http://www.irs.gov/Form990) for instructions and the latest information.

OMB No. 1545-0047

**Open to Public  
Inspection**

Employer identification number

RECYCLED LIVES

46-3500882

**FORM 990, PART I, LINE 1 - ORGANIZATION MISSION OR SIGNIFICANT ACTIVITIES**

RECYCLED LIVES IS A NON-PROFIT ORGANIZATION DEDICATED TO BETTERING THE LIVES OF PEOPLE LIVING IN POVERTY THROUGH FACILITATING ACCESS TO RESOURCES THAT ARE PHYSICAL (CONSTRUCTION OF HOUSING, PROVISION OF FOOD), SPIRITUAL (FAITH-BASED SUPPORT VIA MISSIONARIES), AND/OR FINANCIAL IN NATURE.

**FORM 990, PART III, LINE 4A - PROGRAM SERVICE ACCOMPLISHMENTS**

FAMILY & COMMUNITY CARE PROGRAM: FUNDING FROM THIS PROGRAM COVERS THE MATERIALS AND AID NEEDED TO ADDRESS ILLNESSES, INJURIES, TRANSPORTATION TO WORK, SCHOOL SUPPLIES, COOK STOVES, BEDS, SHOES & CLOTHING, HYGIENE SUPPLIES AND HELP WITH COMMUNITY IMPROVEMENT PROGRAMS SUCH AS SOCIAL & PRAYER VISITS AND REPAIR OF WATER LINES AND STREETS. A WEEKLY KIDS PROGRAM IS CARRIED OUT SO CHILDREN CAN LEARN SOCIAL SKILLS ALONGSIDE THEIR PEERS. COMMUNITY MOVIE NIGHTS ARE PROVIDED FOR FAMILIES TO HAVE THE OPPORTUNITY TO SPEND TIME TOGETHER IN A SAFE ENVIRONMENT. MONTHLY FAMILY MEALS "CENA CON JESUS" WITH COMMUNITY WORSHIP AND PRAYER. DEVELOPMENT OF A COMMUNITY PRAYER AND VEGETABLE GARDEN TO PROVIDE FOR AN AREA FOR PEACEFUL PRAYER AND COMMUNITY COLLABORATION AND TRAINING IN VEGETABLE GARDENING FOR SELF SUFFICIENCY. INSTALLATION OF NEW WATER LINES THROUGHOUT A SECTOR OF THE SAN GABRIEL COMMUNITY TO PROVIDE WATER SERVICE TO 25 FAMILIES.

**FORM 990, PART VI, LINE 11B - FORM 990 REVIEW PROCESS**

BOARD OF DIRECTORS REVIEWS, MAKES CORRECTIONS AND THEN VOTES TO APPROVE.

**FORM 990, PART VI, LINE 12C - EXPLANATION OF MONITORING AND ENFORCEMENT OF CONFLICTS**

ANNUALLY EACH BOARD MEMBER IS REQUIRED TO COMPLETE AND SIGN A CONFLICT OF INTEREST POLICY DOCUMENT WHICH INCLUDES AN OBLIGATION TO REPORT TO THE BOARD CHAIR OR DIRECTOR IF A CHANGE OCCURS AT ANY TIME DURING THE YEAR THAT WOULD BE A CONFLICT OF INTEREST. EMPLOYEES, IF ALSO A VOTING MEMBER OF THE BOARD OR IN RELATION TO A BOARD MEMBER, ARE REQUIRED TO REFRAIN FROM ANY VOTES THAT ARE RELEVANT TO PAY, BENEFITS,

**SCHEDULE O  
(Form 990)**

(Rev. December 2024)

Department of the Treasury  
Internal Revenue Service

Name of the organization

**Supplemental Information to Form 990 or 990-EZ**

Complete to provide information for responses to specific questions on  
Form 990 or 990-EZ or to provide any additional information.  
Attach to Form 990 or Form 990-EZ.

Go to [www.irs.gov/Form990](http://www.irs.gov/Form990) for instructions and the latest information.

OMB No. 1545-0047

**Open to Public  
Inspection**

Employer identification number

RECYCLED LIVES

46-3500882

**FORM 990, PART VI, LINE 12C - EXPLANATION OF MONITORING AND ENFORCEMENT OF CONFLICTS (CONTINUED)**

ETC.

**FORM 990, PART VI, LINE 19 - OTHER ORGANIZATION DOCUMENTS PUBLICLY AVAILABLE**

GOVERNING DOCUMENTS, CONFLICT OF INTEREST POLICY ARE AVAILABLE TO VIEW ONLINE AT OUR  
WEBSITE. FINANCIAL DOCUMENTS WOULD BE MADE AVAILABLE UPON REQUEST OR OFFERED VIA  
INVITAION TO A BOARD MEETING.

**DO NOT MAIL**

RECYCLED LIVES

46-3500882

NO.	DESCRIPTION	DATE ACQUIRED	DATE SOLD	COST/ BASIS	BUS. PCT.	CUR 179 BONUS	SPECIAL DEPR. ALLOW.	PRIOR 179/ BONUS/ SP. DEPR.	PRIOR DEC. BAL DEPR.	SALVAG /BASIS REDUCT	DEPR. BASIS	PRIOR DEPR.	METHOD	LIFE	RATE	CURRENT DEPR.
FORM 990/990-PF																
AUTO / TRANSPORT EQUIPMENT																
2	VEHICLE	1/01/19		18,180							18,180	18,180	S/L HY	5		0
	TOTAL AUTO / TRANSPORT EQUIP			18,180		0	0	0	0	0	18,180	18,180				0
MACHINERY AND EQUIPMENT																
1	FURNITURE & EQUIPMENT	1/01/17		4,853							4,853	4,853	S/L HY	7		0
	TOTAL MACHINERY AND EQUIPME			4,853		0	0	0	0	0	4,853	4,853				0
	TOTAL DEPRECIATION			<u>23,033</u>		<u>0</u>	<u>0</u>	<u>0</u>	<u>0</u>	<u>0</u>	<u>23,033</u>	<u>23,033</u>				<u>0</u>
	GRAND TOTAL DEPRECIATION			<u>23,033</u>		<u>0</u>	<u>0</u>	<u>0</u>	<u>0</u>	<u>0</u>	<u>23,033</u>	<u>23,033</u>				<u>0</u>

DO NOT MAIL