



**RIVER  
SENTRY**  
FLOOD WARNING

*Camp Mystic*  
Guadalupe For Girls

2689 HWY 39  
Hunt, TX 78024  
830-238-4660

## **RIVER SENTRY INSTALLATION**

*March 2026*

---

(20) RS-1A River Sentry Towers

(3) RS-EW Early Warning Towers



# RIVER SENTRY

FLOOD WARNING

DIMENSIONS: 96" H x 8" W

RED STROBE LIGHT (FACING WATER)

WHITE FLOOD LIGHTS (UPHILL)

SPEAKER CUT OUTS

**ALWAYS WATCHING.**  
**ALWAYS READY.**

*We build innovative storm resilient flash flood warning systems to protect lives in the most catastrophic flash flood scenarios.*

*Installed between threat water ways and sleeping quarters, autonomous River Sentry Towers detect rising water, awake the sleeping and illuminate safe egress paths. Wireless early warning signals are provided to downstream proximate towers and alerting devices.*



*To wake you up and provide time to escape...  
Dangerous flood waters are approaching.*

WATER ENTRY PORTAL



# PROTECTING YOUR CHILDREN

## RIVER SENTRY FLOOD WARNING



*Camp Mystic*  
Guadalupe For Girls



The Camp Mystic Guadalupe River Sentry System consists of 23 devices including 20 RS-1A River Sentry Towers and 3 RS-EW Early Warning Towers.

This complement includes:

- 46 water detection solid state float switches
- 40 flood lights
- 40 speakers
- 23 wireless LoRaWAN/BlueTooth/Wi-Fi antenna sets

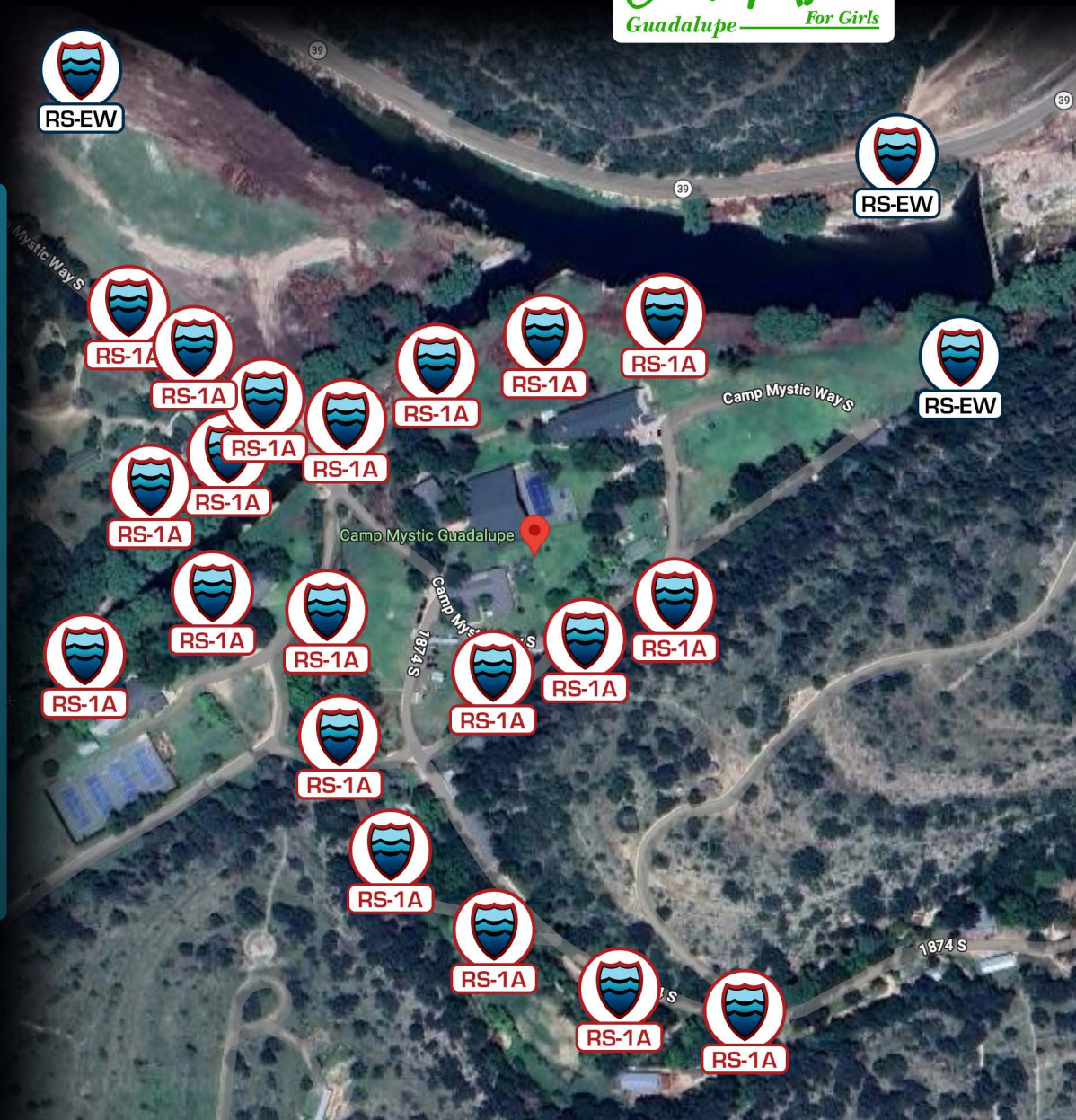
Each unit is autonomous but will be paired to allow any detecting unit present to activate the total system.

To learn more about our product & capabilities:

512-934-4441

[SALES@RIVERSENTRY.COM](mailto:SALES@RIVERSENTRY.COM) | [WWW.RIVERSENTRY.COM](http://WWW.RIVERSENTRY.COM)

4060 COUNTY RD 201 | LIBERTY HILL, TX 78642



## **WHAT IS IT?**

A River Sentry is a localized real time reactive rising water warning system. Resembling a fencepost, the River Sentry is intended as an unassuming feature of the waterside landscape. For many, it will go unnoticed.

## **WHAT DOES IT DO?**

Reflecting the logic of building fire detectors, the River Sentry is simple. It detects rising water. Upon so, redundant triggers housed in a wet logic module activate an audio and light warning system comprised of siren/voice commands, strobe lights, and flood lights.

## **WHERE DOES IT GO?**

River Sentry systems are ideally placed balancing two competing priorities. First, terrain and slope dependent; a River Sentry will be placed between waterside sleeping facilities such as camping spots, cabins, RV sites and the flood threat water way. Perfect position is defined as adequately upslope from the water, while also sufficient to generate a minimum indoor 80 decibel level.

## **WARNING SYSTEM EXPLAINED (AUDIO)**

The River Sentry utilizes a voice/siren combination. The high decibel siren is intended to disturb, the voice commands provide critical instructions to disoriented parties. The automated voice commands of "FLOOD DANGER, FLOOD DANGER, RUN TO HIGHER GROUND" are intended to provide critical, simple and clear commands to illicit immediate action. The siren/voice commands run continuously until the battery is depleted or a manual turn off.

## **WARNING SYSTEM EXPLAINED (LIGHTS)**

The River Sentry utilizes a combination of red strobe lights and white steady lights. The red strobe is located on the water facing side to illuminate the water behind and below the base. The steady white flood is located opposite and always oriented to shine uphill; the direction of safe egress.

## **WARNING SYSTEM EXPLAINED (WIRELESS)**

The River Sentry utilizes a series of low voltage short range wireless solutions that include Bluetooth 5.0, Wi-Fi, and Long Range Wide Area Network (LoRaWAN) to connect with nearby devices including Home Protection Flood Warning Cubes, Mobile Phone Apps and other River Sentry installations. This allows multiple notification channels, upstream predictive triggering and real time online reporting. Flood Warning Cubes – Placed in sleeping areas and paired with nearby River Sentry Installations, these devices contain internal batteries and speakers to serve as a secondary alarm system for residents desiring additional notification channels.

## **HOW IS IT POWERED?**

The River Sentry is powered by an Extreme Temperature Battery Pack. The battery is maintained by a grid powered or solar charger system. Thunderstorms frequently disturb power grids. These critical times are when River Sentry operability is most important.

## **WHAT IS THE PRICE?**

Prices vary with the number of River Sentrys purchased and installation costs. Please call for pricing.