



**RIVER  
SENTRY**  
FLOOD WARNING



***RIVER SENTRY INSTALLATION***

*March 2026*

---

*[2] RS-1A River Sentry Towers*



# RIVER SENTRY RS-1A

## AUTONOMOUS FLOOD DETECTION AND ALARM SYSTEM

**DIMENSIONS: 96" H x 8" W**

**RED STROBE LIGHT (FACING WATER)**

**WHITE FLOOD LIGHTS (UPHILL)**

**SPEAKER CUT OUTS**

***ALWAYS WATCHING.***  
***ALWAYS READY.***

*We build innovative storm resilient flash flood warning systems to protect lives in the most catastrophic flash flood scenarios.*

*Installed between threat water ways and sleeping quarters, autonomous River Sentry Towers detect rising water, awake the sleeping and illuminate safe egress paths. Wireless early warning signals are provided to downstream proximate towers and alerting devices.*



*To wake you up and provide time to escape...  
Dangerous flood waters are approaching.*

**WATER ENTRY PORTAL**



# PROTECTING YOUR CHILDREN

## RIVER SENTRY FLOOD WARNING



The Waldemar River Sentry system consists of 2 RS-1A River Sentry Towers

This complement includes:

- 4 water detection solid state switches
- 4 flood lights
- 4 speakers

The RS-1A towers are readily upgradable to the RS-1B version once it becomes available. The RS-1B version enables downstream triggering, as well as mobile app control

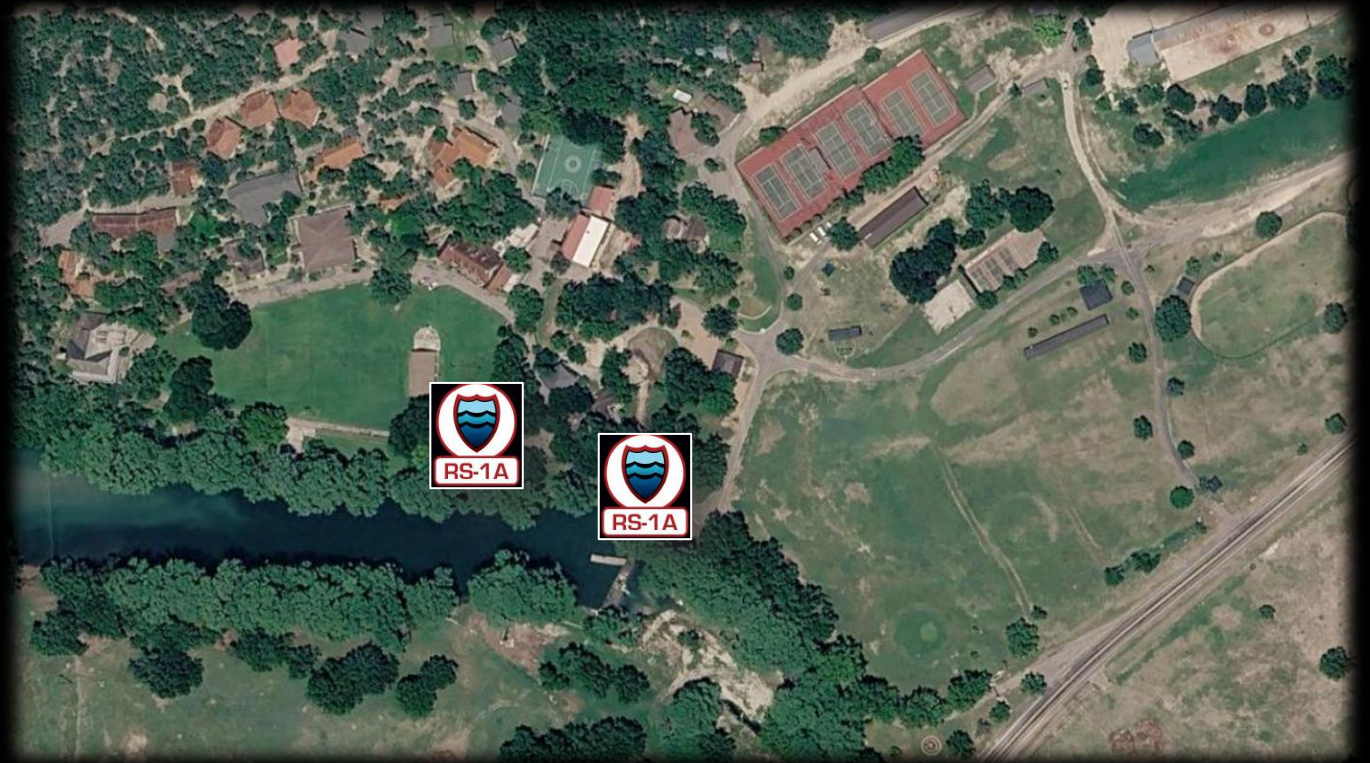
To learn more about River Sentry

Call: 512-934-4441

E-mail: [sales @riversentry.com](mailto:sales@riversentry.com)

Visit: [www.riversentry.com](http://www.riversentry.com)

4060 Country Rd 201, Liberty Hill 78642





### **WHAT IS IT?**

*A River Sentry is a localized real time reactive rising water warning system. Resembling a fencepost, the River Sentry is intended as an unassuming feature of the waterside landscape. For many, it will go unnoticed.*

### **WHAT DOES IT DO?**

*Reflecting the logic of building fire detectors, the River Sentry is simple. It detects rising water. Upon so, redundant triggers housed in a wet logic module activate an audio and light warning system comprised of siren/voice commands, strobe lights, and flood lights.*

### **WHERE DOES IT GO?**

*River Sentry systems are ideally placed balancing two competing priorities. First, terrain and slope dependent; a River Sentry will be placed between waterside sleeping facilities such as camping spots, cabins, RV sites and the flood threat water way. Perfect position is defined as adequately upslope from the water, while also sufficient to generate a minimum indoor 80 decibel level.*

### **WARNING SYSTEM EXPLAINED (AUDIO)**

*The River Sentry utilizes a voice/siren combination. The high decibel siren is intended to disturb, the voice commands provide critical instructions to disoriented parties. The automated voice commands of "FLOOD DANGER, FLOOD DANGER, RUN TO HIGHER GROUND" are intended to provide critical, simple and clear commands to illicit immediate action. The siren/voice commands run continuously until the battery is depleted or a manual turn off.*

### **WARNING SYSTEM EXPLAINED (LIGHTS)**

*The River Sentry utilizes a combination of red strobe lights and white steady lights. The red strobe is located on the water facing side to illuminate the water behind and below the base. The steady white flood is located opposite and always oriented to shine uphill; the direction of safe egress.*

### **HOW IS IT POWERED?**

*The River Sentry is powered by an Extreme Temperature Battery Pack. The battery is maintained by a grid powered or solar charger system. Thunderstorms frequently disturb power grids. These critical times are when River Sentry operability is most important.*



# NEW FEATURES COMING LATER IN 2026

## WIRELESS DOWN-STREAM TRIGGERING & MOBILE APP CONTROLLER



**NO CELL SIGNAL. NO POWER GRID.**

**NO PROBLEM.**

