

# Linx 10 — Quick Reference

## Safety



Before you use the printer described in this guide or perform any maintenance tasks on it, you must read, understand and follow *all* the safety information in the *Linx 10 Operating Manual*. You must pay particular attention to all Warnings and Cautions in the documentation.

## Printer power supply



**WARNING: LETHAL VOLTAGE HAZARD. USE ONLY THE POWER SUPPLY THAT IS SUPPLIED WITH THE PRINTER. THE USE OF A POWER SUPPLY THAT IS NOT APPROVED CAN MAKE THE PRINTER UNSAFE TO USE.**

## Inks and solvents



**WARNING: HAZARDOUS SUBSTANCES. THIS PRINTER USES SOLVENT AND SOLVENT-BASED INKS THAT CAN BE HAZARDOUS. THESE INKS AND SOLVENTS ARE HIGHLY FLAMMABLE, AND THE LIQUID, VAPOUR OR SPRAY CAN CAUSE IRRITATION TO THE EYES AND SKIN.**

**WARNING: YOU MUST WEAR SAFETY EYEGLASSES AND SOLVENT-RESISTANT PROTECTIVE GLOVES WHEN THERE IS DIRECT CONTACT WITH THE INKS AND SOLVENTS, WHEN YOU DO WORK ON THE PRINTER, AND WHEN YOU CLEAN THE PRINTER.**

**WARNING: IF YOU IGNORE THIS SAFETY WARNING, THERE IS A RISK OF SEVERE IRRITATION AND TEMPORARY (REVERSIBLE) DAMAGE TO THE EYES, AND IRRITATION OF THE SKIN.**

## Sharp needles hazard



**WARNING: SHARP NEEDLES HAZARD. THE INK AND SOLVENT REFILL MECHANISM AND THE SERVICE MODULE USE NEEDLES TO PIERCE THE CARTRIDGE CAPS.**

**CAUTION MUST BE USED WHEN THE INK AND SOLVENT CARTRIDGES ARE REPLACED OR WORK IS DONE ON THE SERVICE MODULE.**

**THERE IS A RISK OF PERSONAL INJURY IF THIS WARNING IS IGNORED.**

## 1. Turn on and start the printer

To turn on the printer, press the blue 'power on' switch on the left side of the printer cabinet for approximately two seconds. Touch the green **Start Printing** button to print the current selected message.

## 2. Stop the printer

Touch the red **Stop Jet** button, and then use the **Power Off** button to turn off the printer when it is in the "Idle" state. For example, if you do not need the printer until the next day.

Use the yellow **Pause Printing** button to stop printing for a short time. Do not use the **Stop Jet** button to stop printing for a short time, because this button stops the jet.

## 3. Replace ink and solvent cartridges

Replace ink or solvent cartridges when the printer displays the "3.77 Ink Cartridge Empty" or "3.78 Solvent Cartridge Empty" Warning message.

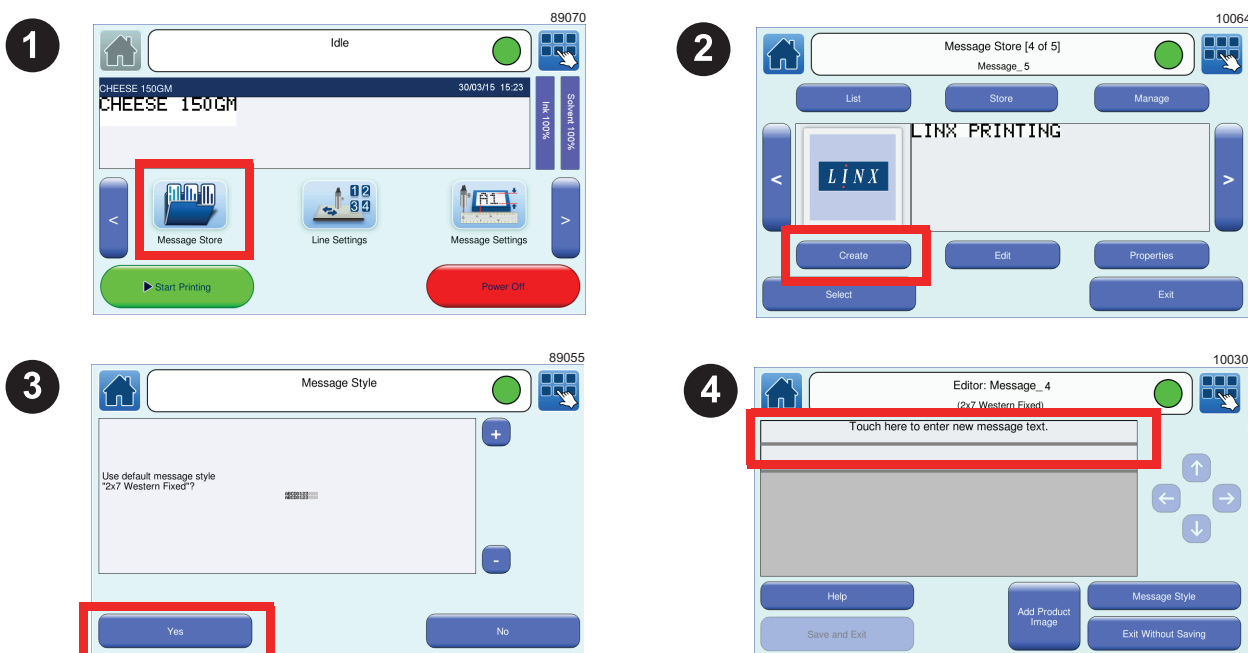
Touch the **Need help?** button on the Warning message screen to display on-screen instructions about how to replace the ink and solvent cartridges.

# Linx 10 — Quick Reference

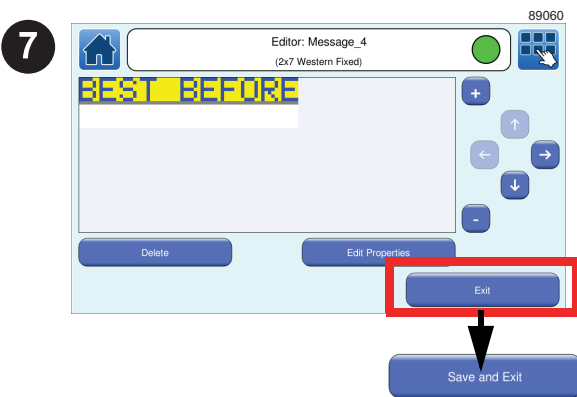
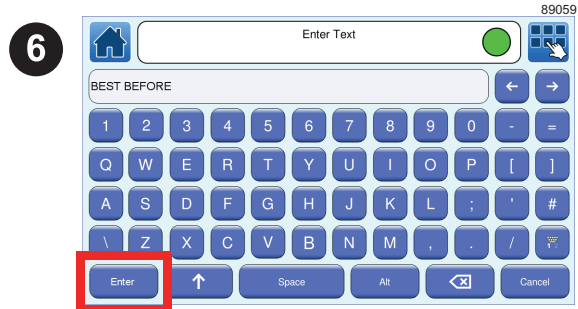
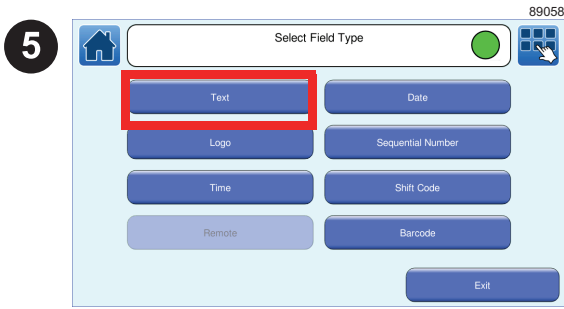
## 4. Log in to and log off from the printer (Supervisor user level)



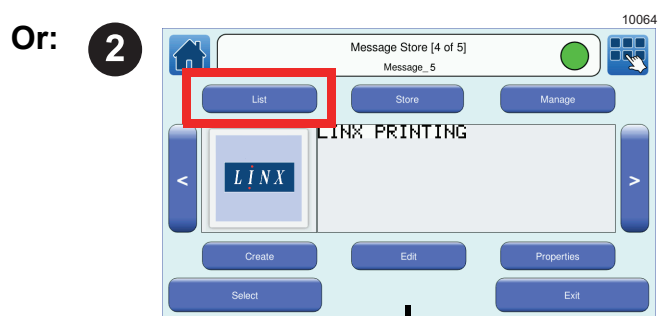
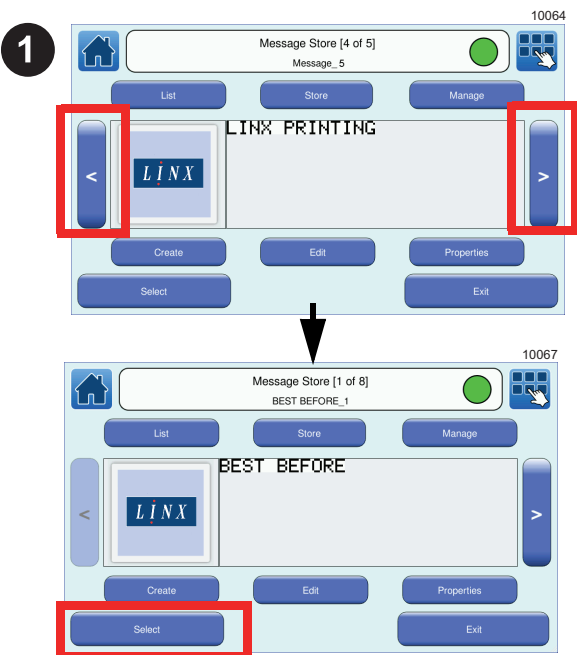
## 5. Create a message



# Linx 10 — Quick Reference

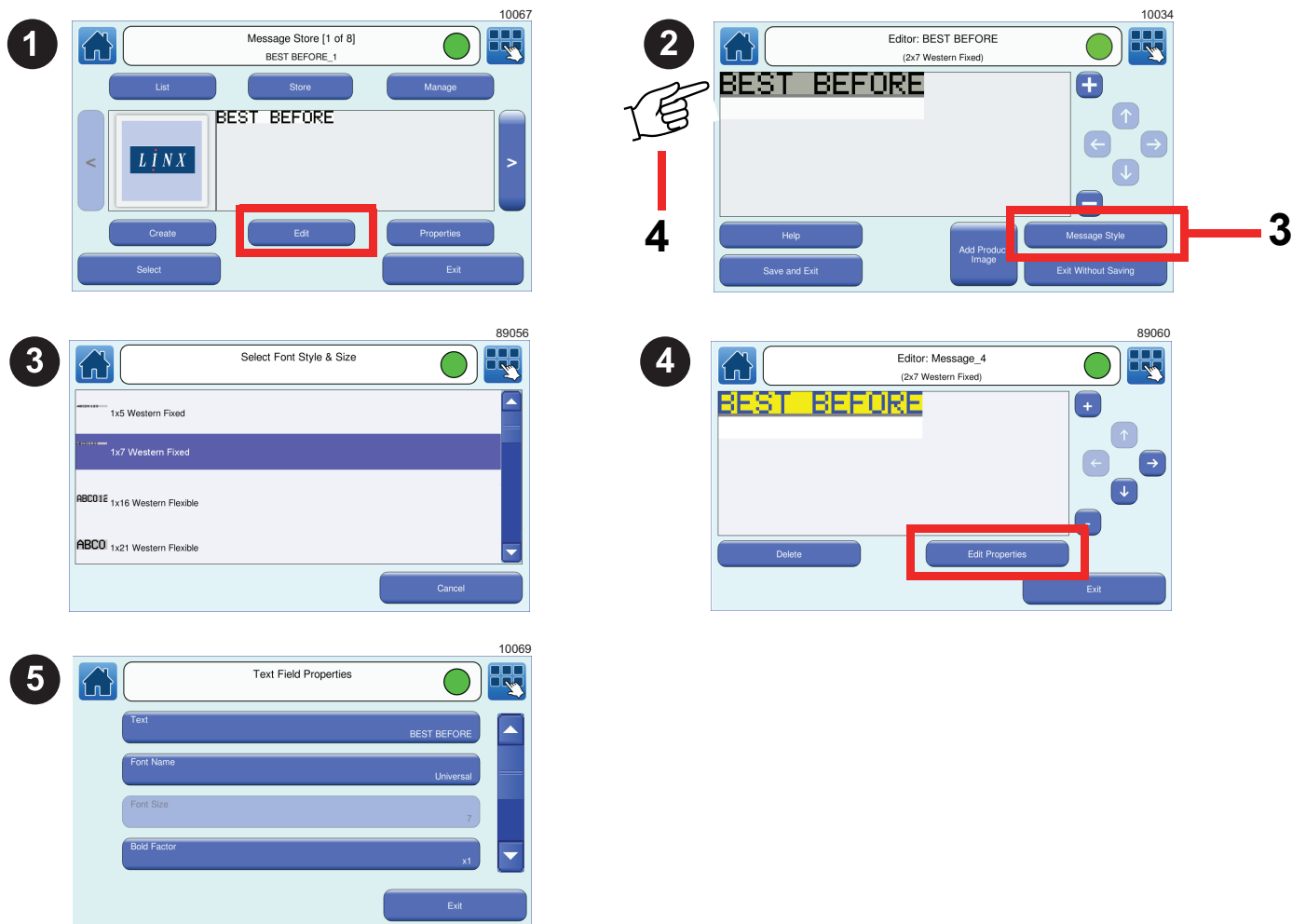


## 6. Select a message to print (Home > Message Store)

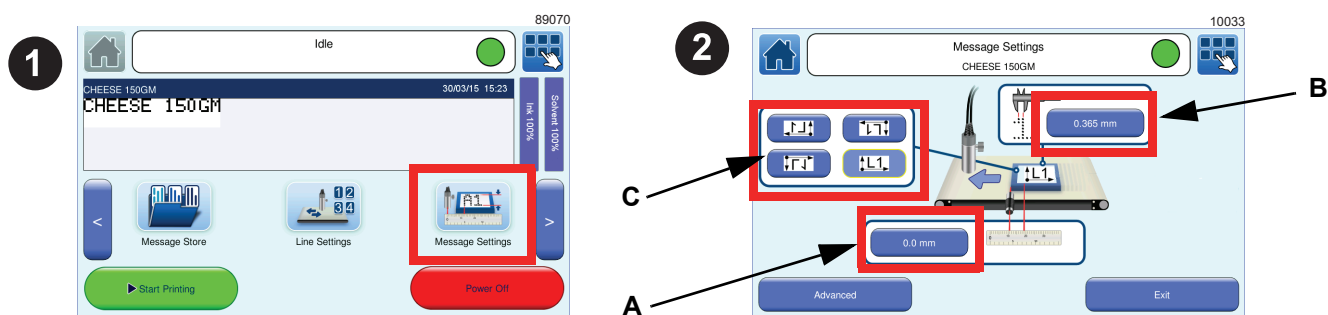


# Linx 10 — Quick Reference




## 7. Edit a message (Home > Message Store)



## 8. Adjust print position (A), print width (B), and message orientation (C)



## 9. Printer icons (at top right of the printer screen)

-  The printer is operating normally—there are no faults or warnings.
-  Printer warnings—there are one or more current warnings, but no faults.
-  Printer faults—there are one or more current faults (warnings can exist, but faults take priority).