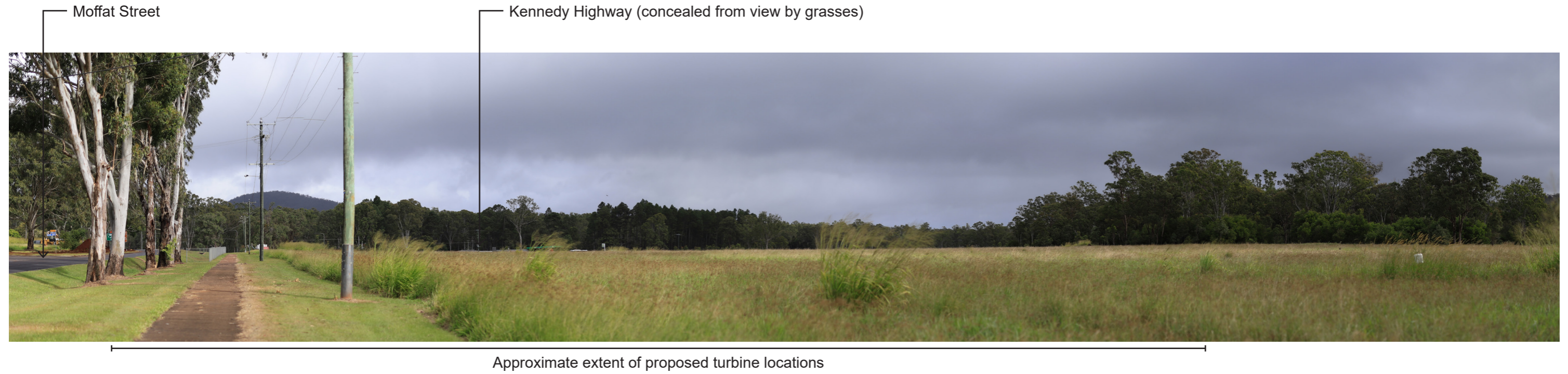
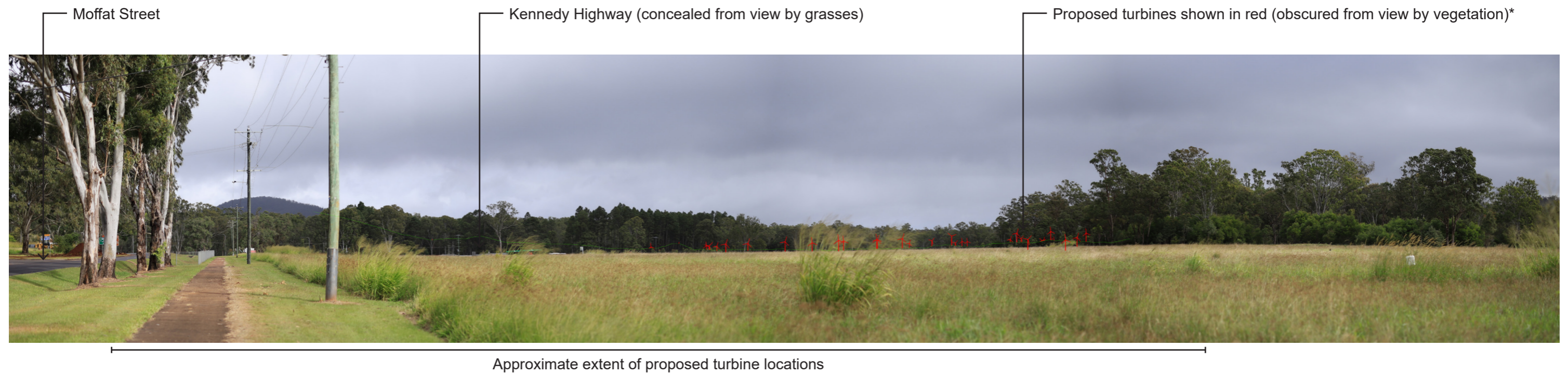


Figure 14: Viewpoint 1: View from Ravenshoe (Moffat Street) looking south to Site

Existing View



Visualisation of Proposed Development



**Turbines obscured from view by elevated topography are not shown highlighted*

Note: Refer to Section 8 of the Chalumbin Wind Farm Landscape and Visual Impact Assessment for likely impact of the wind farm on this viewpoint.

Figure 15: Viewpoint 2: View from Big Millstream Falls lookout looking southwest to Site

Existing View

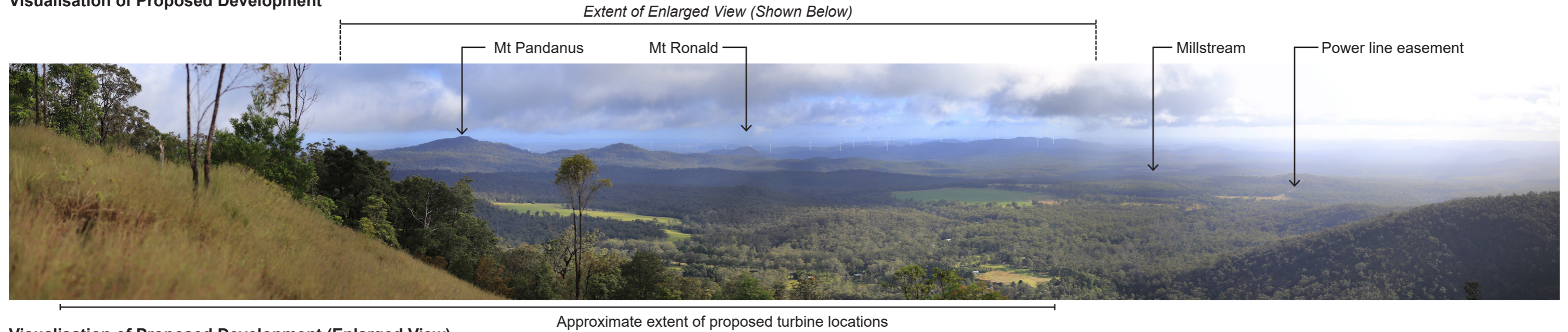


Figure 16: Viewpoint 3: View from Bally Knob lookout looking southwest to Site

Existing View



Visualisation of Proposed Development

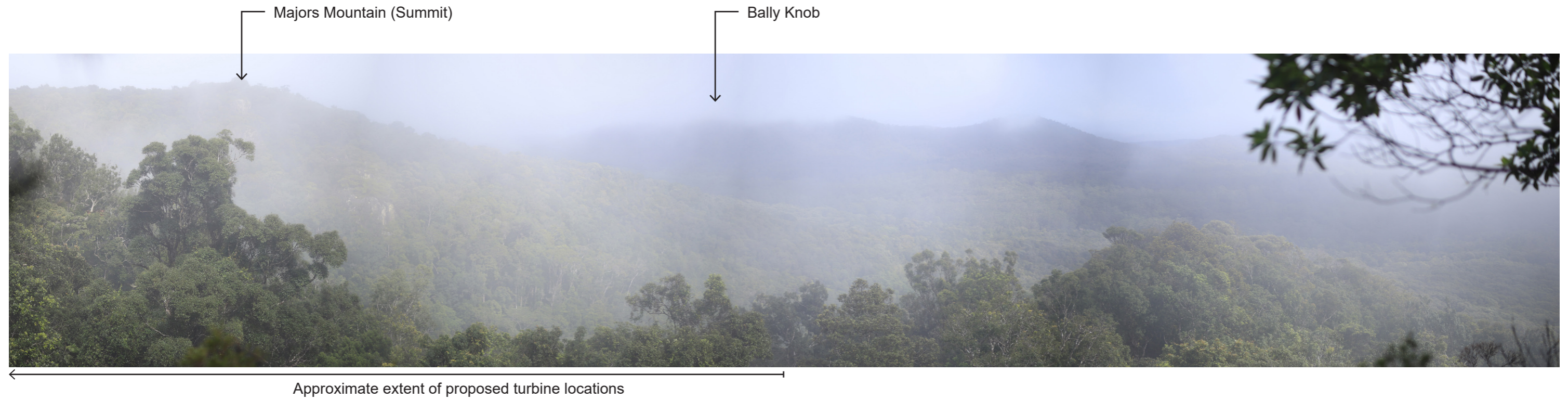


Visualisation of Proposed Development (Enlarged View)

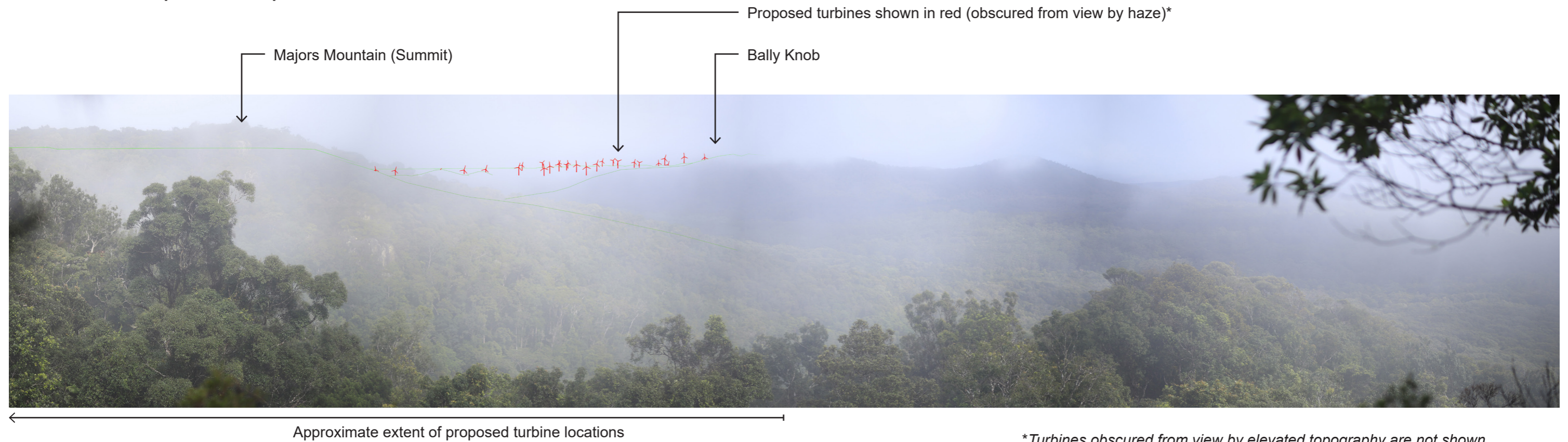


Figure 17: Viewpoint 4: View from Majors Mountain lookout looking southwest to Site

Existing View



Visualisation of Proposed Development



**Turbines obscured from view by elevated topography are not shown highlighted*

Note: Refer to Section 8 of the Chalumbin Wind Farm Landscape and Visual Impact Assessment for likely impact of the wind farm on this viewpoint.

Figure 18: Viewpoint 5: View from Koombooloomba Camping and Day-Use Area looking west to Site

Existing View

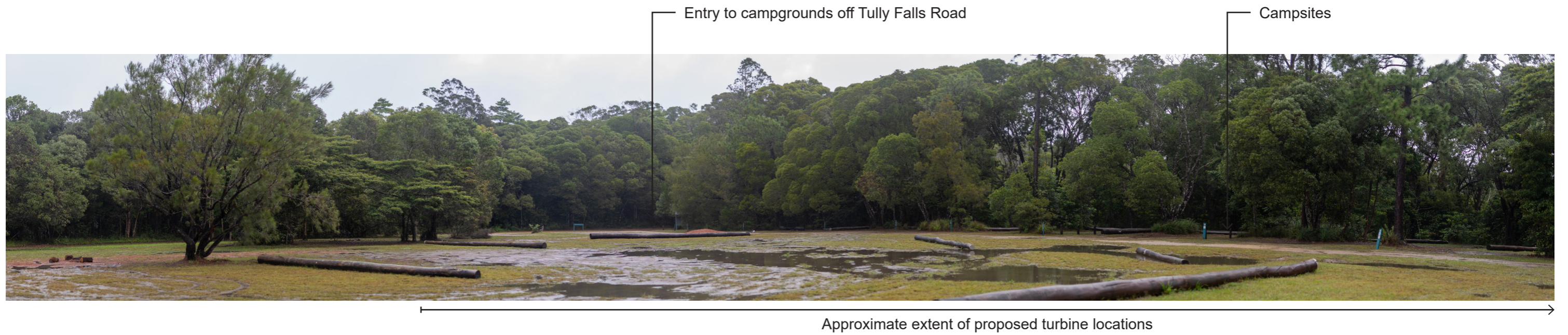


Figure 19: Viewpoint 6: View from the southern entry to Glen Ruth Station on Cashmere Kirrama Road, looking north to Site

Existing View



Figure 20: Viewpoint 7: View from Gunnawarra Road looking northeast to Site

Existing View

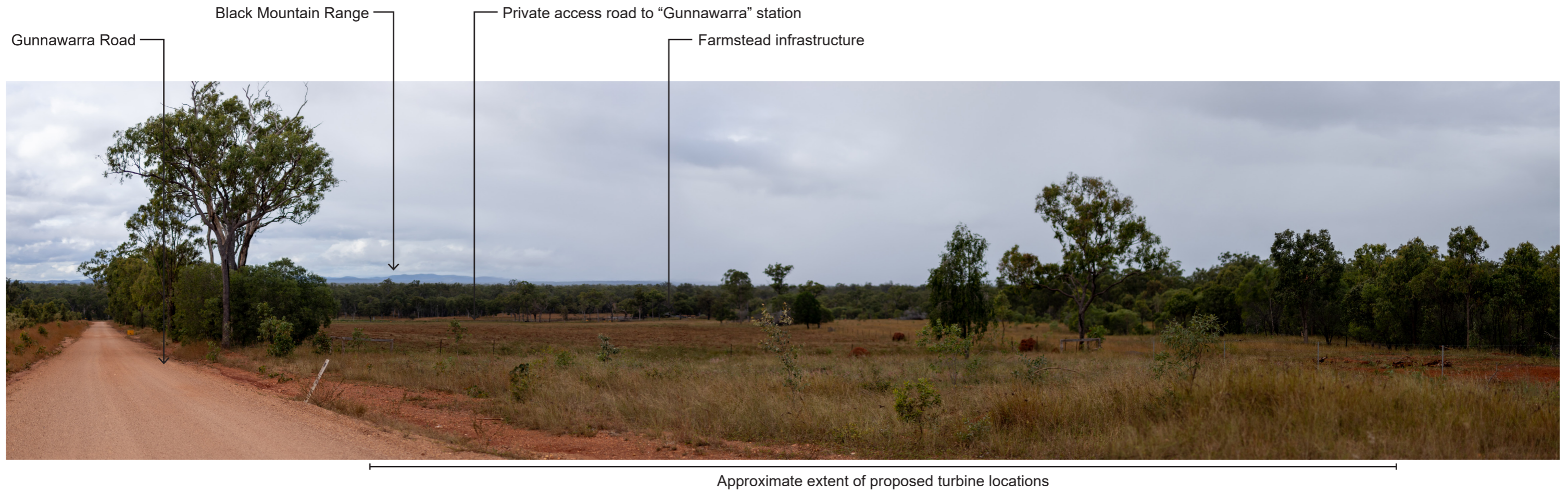


Figure 21: Viewpoint 8: View from Kennedy Highway looking east to Site

Existing View

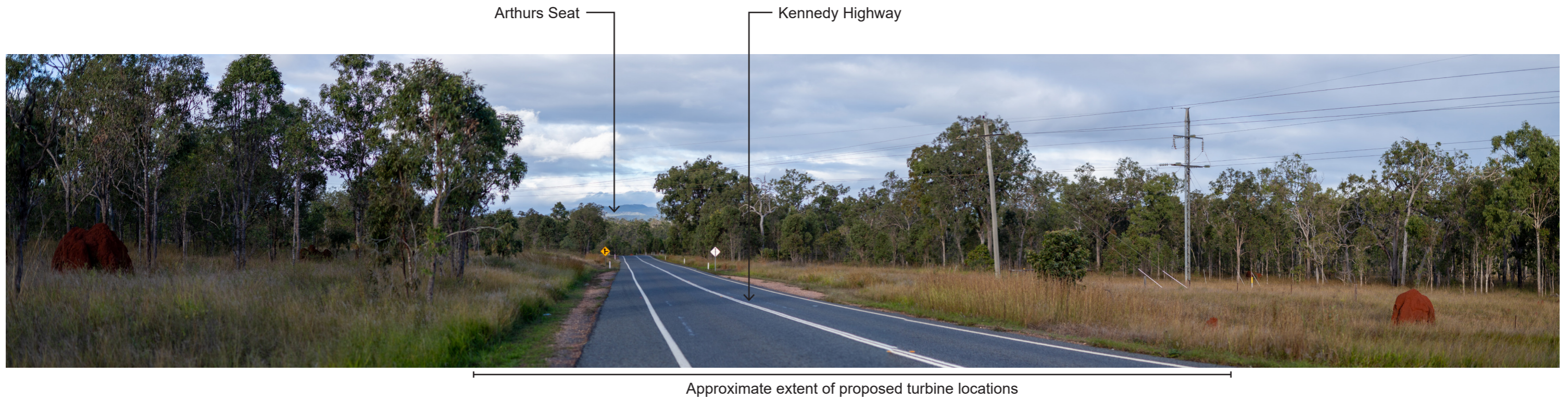


Figure 22: Viewpoint 9: View from Innot Hot Springs Community Hall looking southeast to Site

Existing View

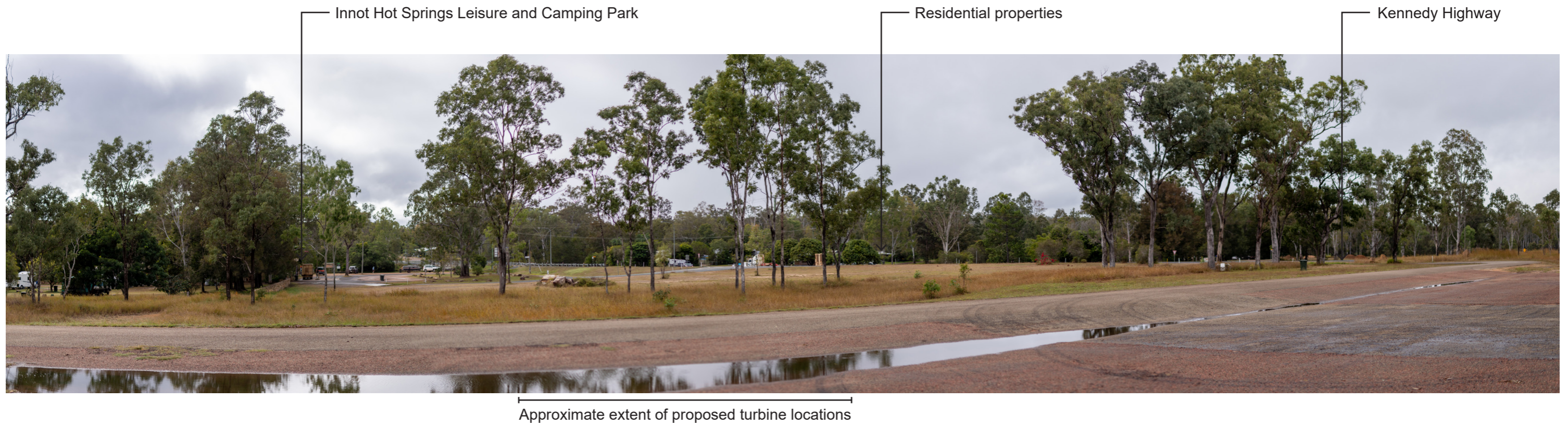
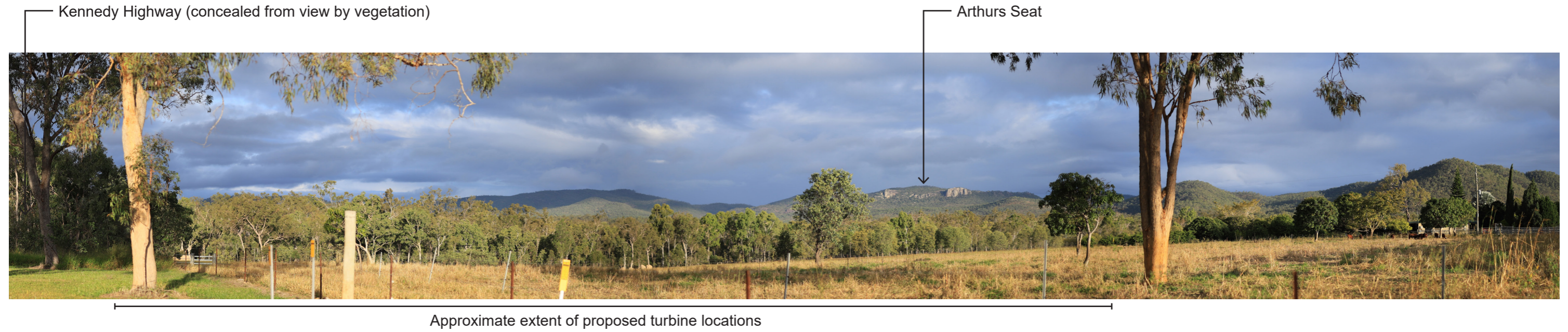


Figure 23: Viewpoint 10: View from 15225 Kennedy Highway looking southeast to Site

Existing View



Visualisation of Proposed Development

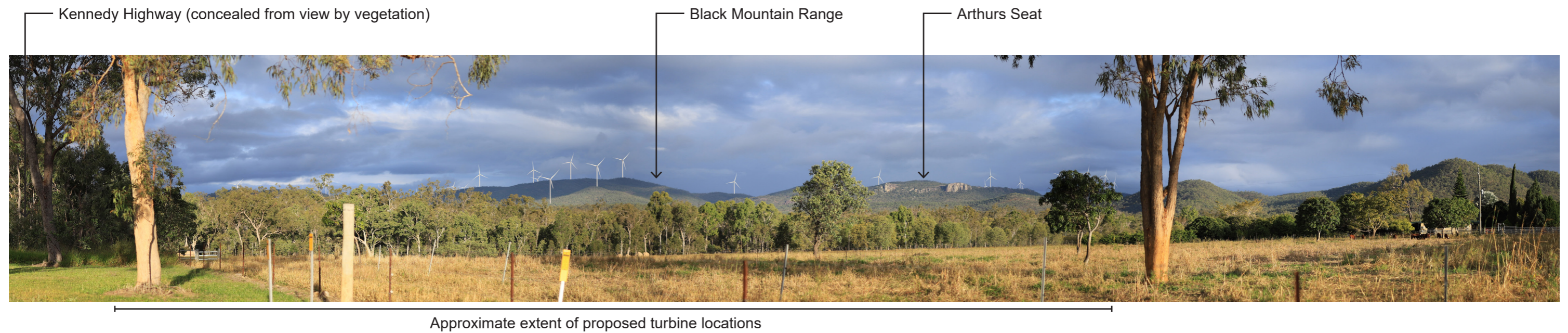


Figure 24: Viewpoint 11: View from Herbert River Road (at Red Bend Farm) looking east to Site

Existing View*



Visualisation of Proposed Development*

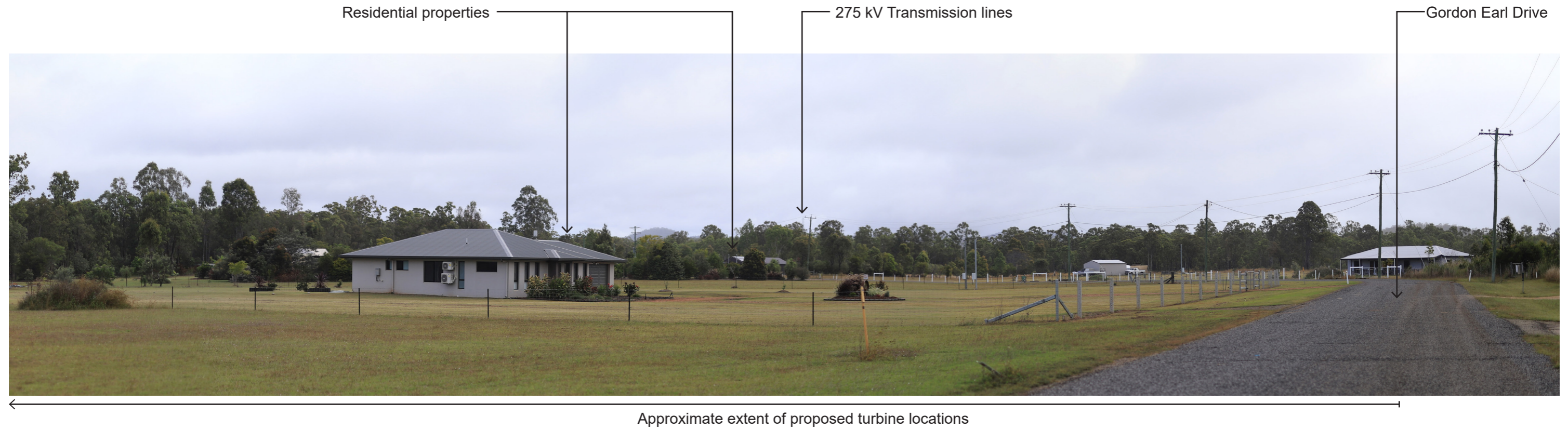


**Due to hazy conditions during field work, the sky in the photographs has been altered to increase the visual contrast between the proposed turbines and the sky.*

Note: Refer to Section 8 of the Chalumbin Wind Farm Landscape and Visual Impact Assessment for likely impact of the wind farm on this viewpoint.

Figure 25: Viewpoint 12: View from Gordon Earl Drive, Millstream looking southwest to Site

Existing View



Visualisation of Proposed Development

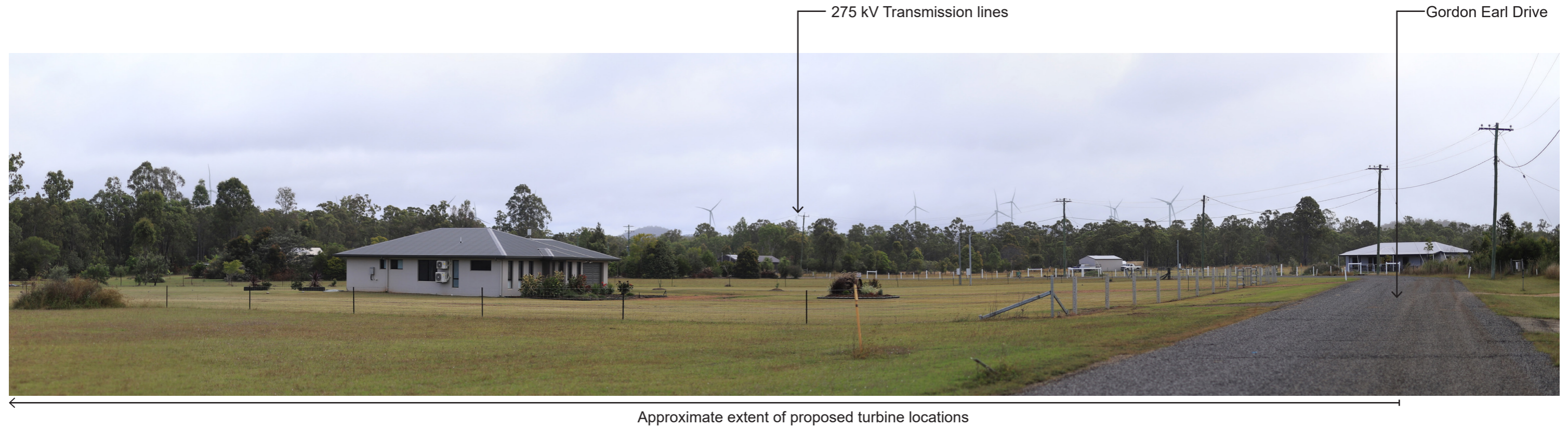


Figure 26: Viewpoint 13: View from Rhyolite Pinnacle looking east (south to Site)

Existing View



Figure 27: Viewpoint 14: View from Koolmoon Creek track to Rhyolite Pinnacle looking west to Site

Existing View



Approximate extent of proposed turbine locations

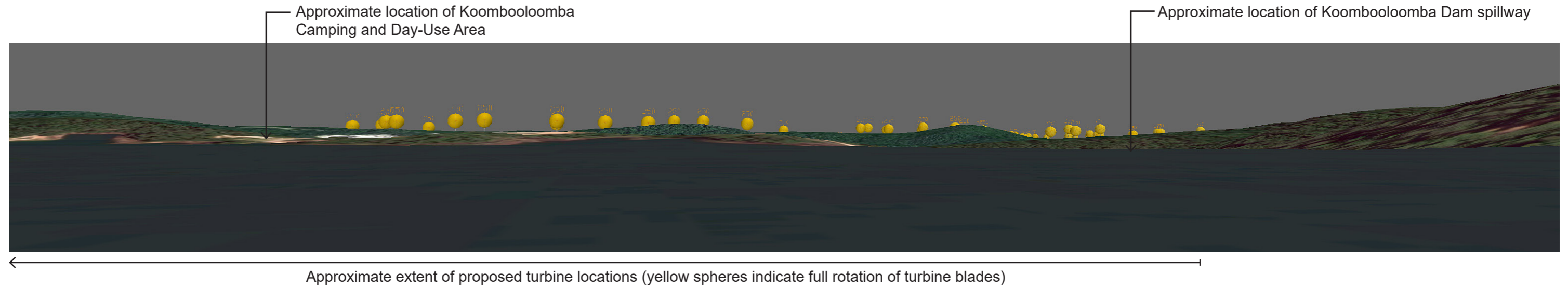
Visualisation of Proposed Development



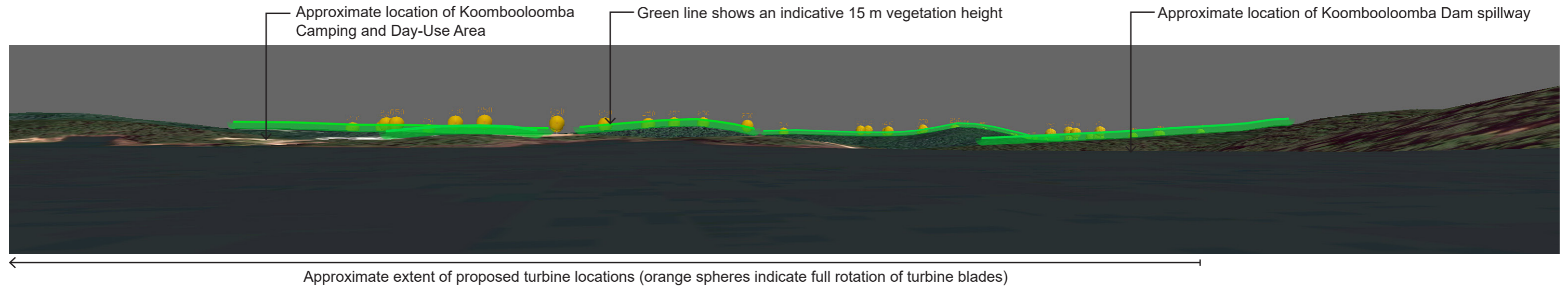
Approximate extent of proposed turbine locations

Figure 28: Viewpoint 15a: View from Lake Koombooloomba, looking west to Site

Visualisation of Proposed Development (3D Model located in Google Earth)



Visualisation of Proposed Development (3D Model located in Google Earth - showing indicative tree line)



Indicative Extent of View

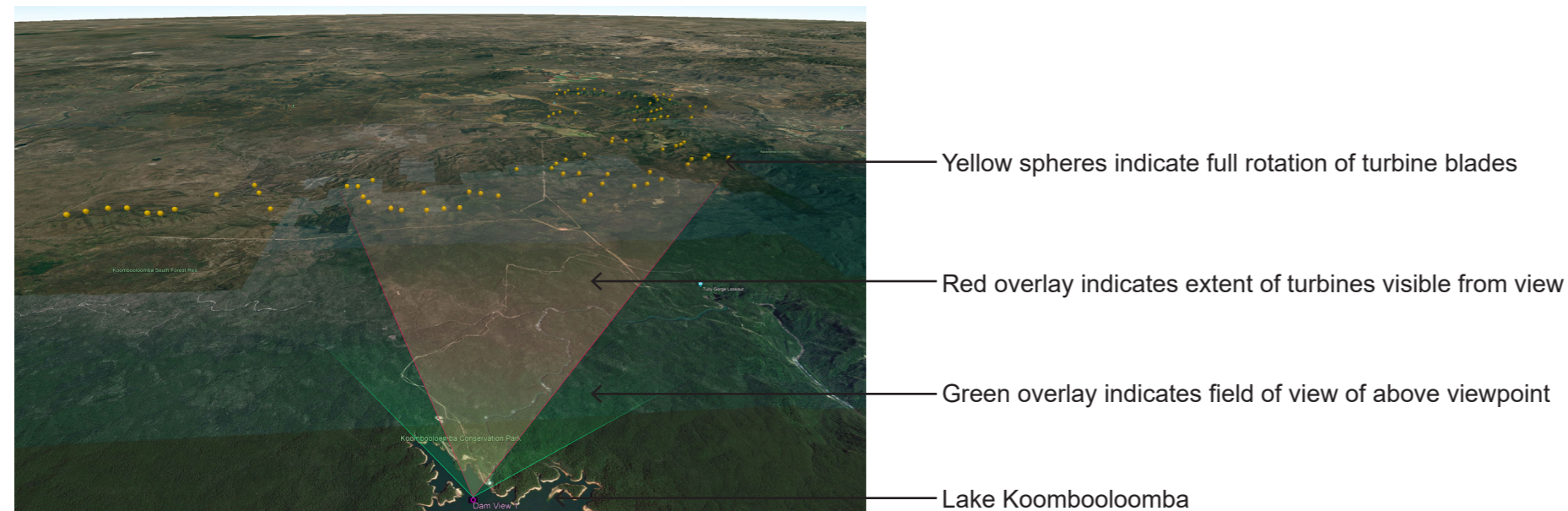
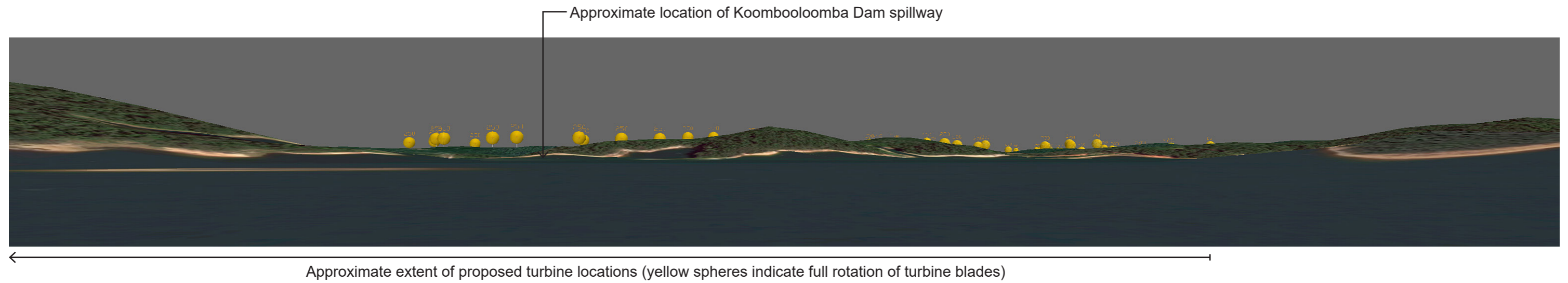
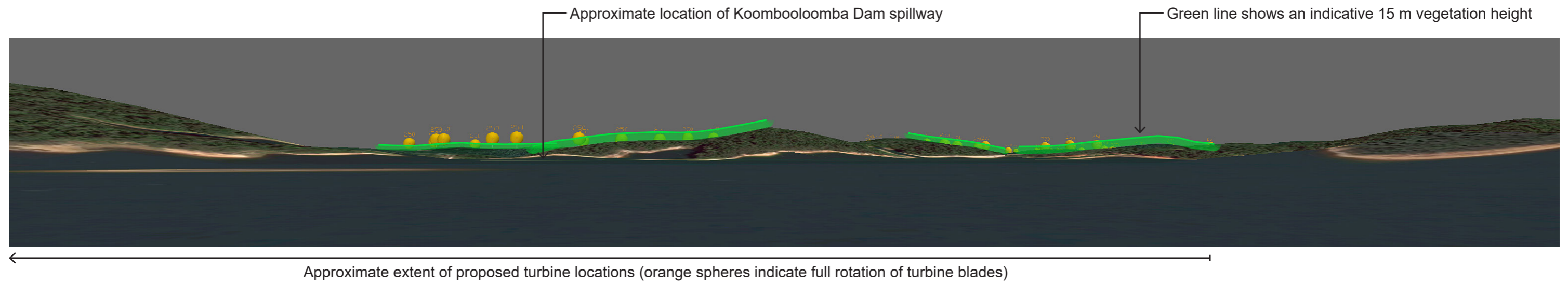


Figure 29: Viewpoint 15b: View from Lake Koombooloomba, looking west to Site

Visualisation of Proposed Development (3D Model located in Google Earth)



Visualisation of Proposed Development (3D Model located in Google Earth - showing indicative tree line)



Indicative Extent of View

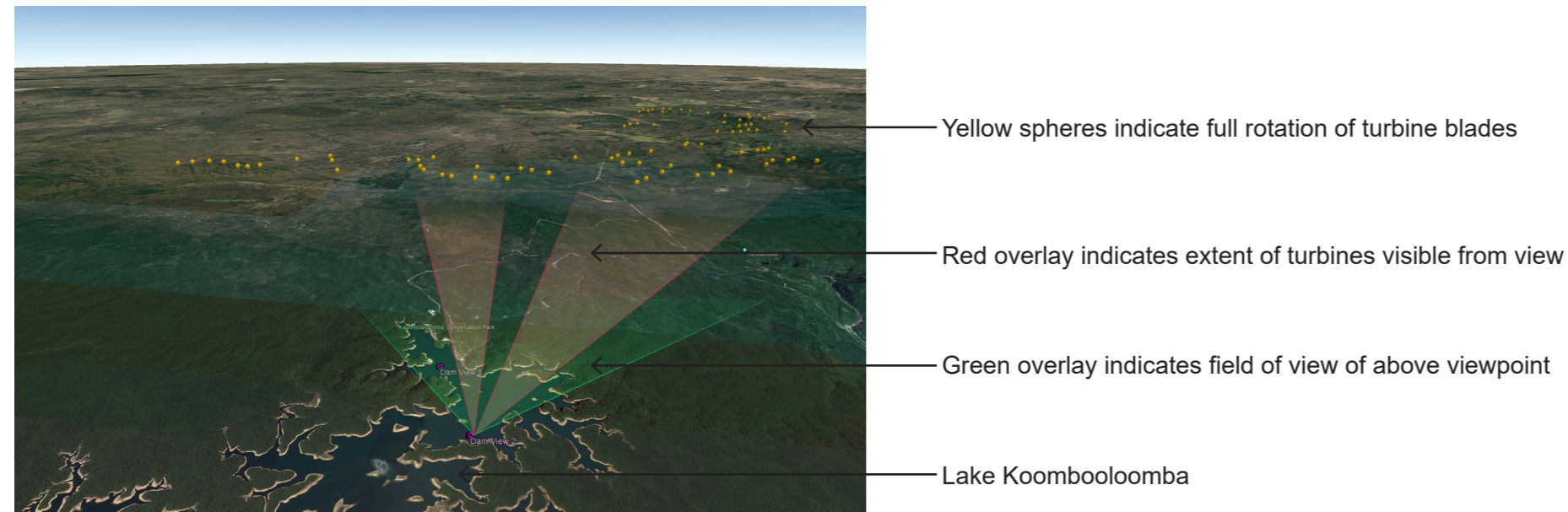


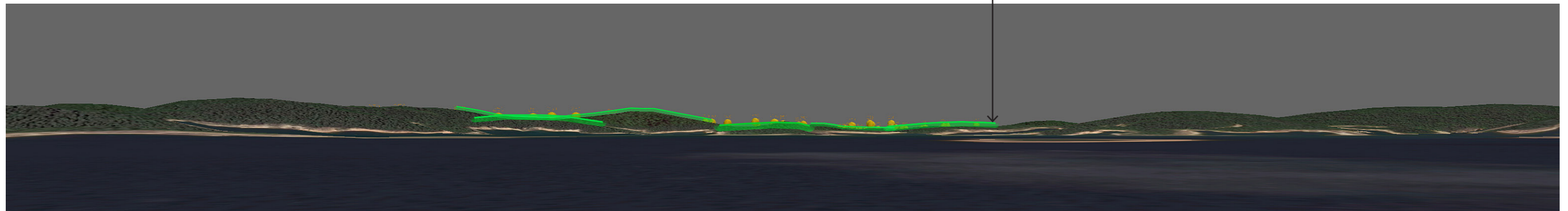
Figure 30: Viewpoint 15c: View from Lake Koombooloomba, looking west to Site

Visualisation of Proposed Development (3D Model located in Google Earth)



Approximate extent of proposed turbine locations (yellow spheres indicate full rotation of turbine blades)

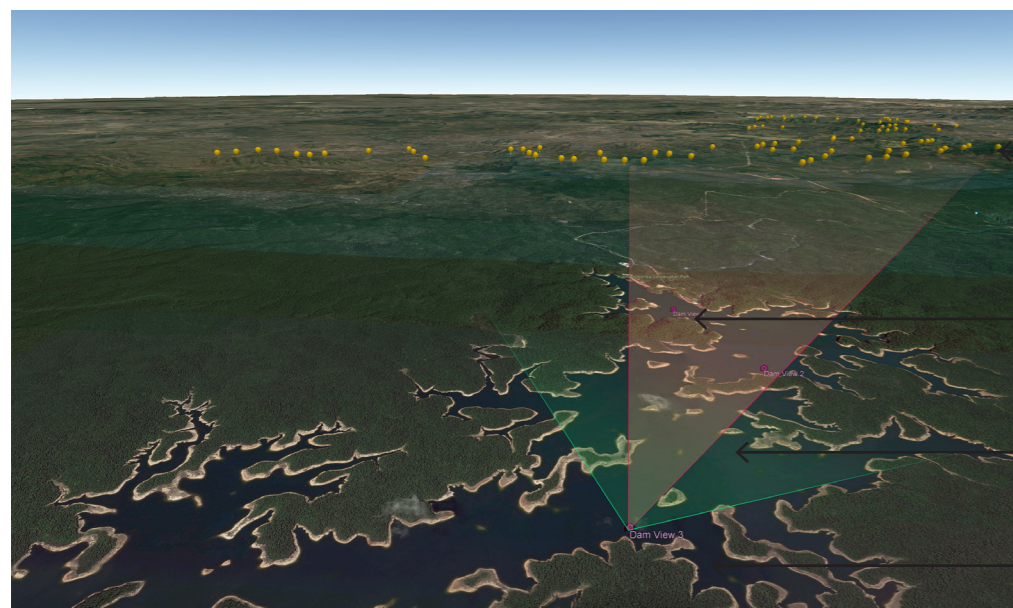
Visualisation of Proposed Development (3D Model located in Google Earth - showing indicative tree line)



Green line shows an indicative 15 m vegetation height

Approximate extent of proposed turbine locations (orange spheres indicate full rotation of turbine blades)

Indicative Extent of View



Yellow spheres indicate full rotation of turbine blades

Red overlay indicates extent of turbines visible from view

Green overlay indicates field of view of above viewpoint

Lake Koombooloomba