



## 6<sup>th</sup> Annual Private Treaty Bull Sale

Featuring 11 Red Angus Bulls  
(10 Registered, 1 Commercial)



Jeremy & Asia Haack  
402-860-4096  
402-366-7409  
[haackredangus.com](http://haackredangus.com)  
[haackredangus@gmail.com](mailto:haackredangus@gmail.com)



# TOP DOLLAR ANGUS

Because verified genetics deserve verified premiums

Should you consider Top Dollar Angus verification for your calves? YES, absolutely!

If you've consistently invested in high-performing Red Angus genetics, we can make your top-end calves stand out from the pack on sale day and give you access to the Top Dollar Angus premium calf-buyer network. Top Dollar Angus has the resources to rally more bidders and buyers on your behalf when you market your feeder calves. Call today for a free, no-obligation consultation.



Nate Smith,  
General Manager  
(620) 546-4839  
nate@topdollarangus.com



Kaylin Hokanson,  
Field Representative, Analyst  
(307) 461-7687  
kaylin@topdollarangus.com

Scan this  
QR code for  
profit  
verification



www.topdollarangus.com



## RED ANGUS GUIDE TO EPDS

RedAngus.org

**ProS** ..... Profitability and Sustainability is an all-purpose index that predicts average economic differences in all segments in the beef supply chain. This index is a combination of the breeding objectives modeled in the HerdBuilder and GridMaster selection indexes. In this index, replacement heifers are retained from within the herd and all remaining progeny are fed out to slaughter and sold on a quality-based grid. Traits included in this index include calving ease, growth, HPG, STAY, Mature Weight, Dry Matter Intake and carcass traits. The resulting index is expressed in dollars per head born (Index/High Value).

**HB** ..... HerdBuilder is a maternal selection index that predicts the economic differences of animals for traits that are important from conception through weaning. Expressed as dollars per head born, HB is calculated based on the scenario that bulls are mated to heifers and cows, replacement heifers are retained and all remaining progeny are marketed at weaning. Traits included in the HB index include Calving Ease Direct, Calving Ease Maternal, Weaning Weight, Milk, Mature Weight, Heifer Pregnancy and Stayability (Index/High Value).

**GM** ..... GridMaster is a selection index that predicts the average economic difference of non-replacement calves through the post-weaning phase of production. GM places selection pressure on growth, feedyard performance and carcass traits. Expressed as dollars per head born, GM is calculated based on the scenario that progeny are fed out to slaughter and marketed on a quality-based carcass grid. Traits included in GM include Average Daily Gain, Carcass Weight, Dry Matter Intake, Marbling, Back Fat and Rib Eye Area (Index/High Value).

**CE** ..... Calving Ease Direct predicts differences in the percent of calves born unassisted out of 2-year-old dams. (Percent/High Value)

**BW** ..... Birth Weight predicts differences in actual birth weight of progeny. (Pounds/Low Value)

**WW** ..... Weaning Weight predicts differences in 205-day weaning weight. (Pounds/High Value)

**YW** ..... Yearling Weight predicts differences in 365-day yearling weight. (Pounds/High Value)

**ADG** ..... Average Daily Gain predicts differences in weight gain between 205 and 365 days of age. (Pounds/High Value)

**DMI** ..... Dry Matter Intake predicts differences in daily feed intake as measured in a feedlot during the post-weaning period. (Pounds/Low Value)

**MILK** ..... Milk predicts differences in weaning weight attributed to the milking ability of the animal's daughters. (Pounds/High Value)

**ME** ..... Maintenance Energy predicts the difference in maintenance energy requirements. (Mcal per Month/Low Value)

**HPG** ..... Heifer Pregnancy predicts differences in the percent of daughters who are able to conceive and calve at 2 years of age following exposure to breeding. (Percent/High Value)

**CEM** ..... Calving Ease Maternal predicts differences in the percent of daughters who are able to calve unassisted as 2-year-old heifers. (Percent/High Value)

**STAY** ..... Stayability predicts differences in the ability of an animals' retained daughters to remain productive in the herd - calve every year - through 6 years of age. (Percent/High Value)

**MARB** ..... Marbling predicts differences in marbling score - amount of intramuscular fat measured at the 13th rib. (Marbling Score Units/High Value)

**YG** ..... Yield Grade predicts differences in USDA Yield Grade, which is calculated using CW, REA and Fat. (Yield Grade Units/Low Value)

**CW** ..... Carcass Weight predicts differences in actual hot carcass weight. (Pounds/High Value)

**REA** ..... Ribeye Area predicts differences in square inches of ribeye area measured at the 13th rib. (Square Inches/High Value)

**FAT** ..... Fat predicts differences in the depth of backfat measured between the 12th and 13th ribs. (Inches/Low Value)

## Welcome Cattlemen,

Thank you for your consideration of our private treaty yearling bulls! As we have built our herd over the last decade, we have selected genetic influence from some of the most prominent Red Angus breeders in the country, with the goal of producing moderate-framed, productive, fertile cattle with excellent feet and udders. This means culling hard every year and admitting that some cows look good on paper but just don't belong in a sustainable cowherd.

It is a great time to reassess your herd's bull battery. With record-setting cattle prices it is time to capitalize by maximizing the efficiency of your cowherd. Maybe you need a heifer bull to ensure live calves, or a performance bull to increase pounds at sale day. In either case, the market outlook is strong, so now is a good time to make an investment in the future profitability of your herd.

We are very excited about this year's bull calf crop, starting with sons of the popular and now deceased, Bieber Stockmarket E119. This year we also sampled 5L Up The Limit. He consistently stamps his calves with moderate birthweight, thickness down the top, depth and structural correctness. We liked his calves so much that he will have sons available again in our 2026 offering. The remainder of the bulls come from: C-Bar Red Baron 207J, STRA Relentless, and sons of Feddes Treadstone and 3SCC Domain A163. The bulls will have passed their Breeding Soundness Exam prior to possession. These bulls are easy to handle and have sound structure combined with EPD merit. All bulls have ultrasound data, and have been tissue sampled to possess accuracy-enhanced EPDs (updated as of 2-6-25).



Enjoy the bulls,

Jeremy & Asia

## Terms

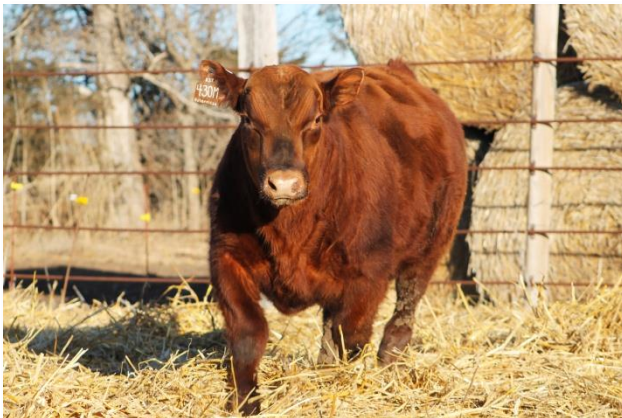
Bulls will have passed their breeding soundness exam prior to possession. Bulls will be guaranteed to be breeders in their first season, outside of any neglect or injury. We recommend you purchase insurance for your bull. Bulls are expected to be picked up/delivered no later than April 15th, 2025 (unless other arrangements are made). Bulls are sold on a first come, first serve basis.

Half down of the purchase price will hold the bull until pick-up/delivery.

Bulls are currently available for viewing. Contact Jeremy (402-860-4096) or Asia (402-366-7409) to coordinate a time.

## Raising the Bulls

The bulls are fed a developer diet post-weaning and we measure their gains. This year's bulls gained an average of 3.2#/day during the growing period, the 60 days prior of taking yearling weights. Once yearling weights are taken, we transition the bulls to a maintenance diet that is high in forage so they are prepared to go to work during their first breeding season. We don't strive to have our bulls gain too much too fast, as their foot structure and longevity are very important to us. We also pride ourselves in the disposition of our bulls. We handle them often and expose them to kids, dogs, and ATV's.



# Red Angus



## Haack Stockmarket 401M

Our first Stockmarket son is a moderate-framed heifer bull. He is a sleep all-night heifer bull that doesn't lack performance. All composite EPDs are in the top 19% or better of the breed.

Safe for use on heifers.

Lot 1		HAACK STOCKMARKET 401M																																				
B JDHAA / 401M  LSF SAGA 1040Y PIE STOCKMAN 4051 PIE LAKOTA 046 BIEBER CL STOCKMARKET E1193751659 ANDRAS FUSION R236 BIEBER CL ADELLE 475C BIEBER ADELLE 297Y  LACY GOLD BAR 8123 BIEBER HARD DRIVE Y120 BIEBER LAURA 158W DRST EMERALD 706E3879027 BECKTON CHAMP R508 R1 OOF ANASCO 0895 ANDRAS ANASCO 6027 MPPA: 96 Dam Age: 08-30-2017	01-01-2024		1A — 100% AR																																			
			# 4965920																																			
					Ratio		Data																															
					Act. BW		75		58																													
					Adj. WW				514																													
					Adj. YW				1,025																													
					SC				35 cm																													
					Frame				4.5																													
					EPD Top%		Data																															
					MARB		1.00		1%		4.12																											
					YG		0.11		72%																													
					CW		14		81%																													
					REA		0.12		52%		12.20																											
					FAT		0.05		94%		0.20																											
					ADG		0.27		33%		3.1																											
					DMI		1.00		79%																													
															ProS		HB		GM		CED		BW		WW		YW		MILK		ME		HPG		CEM		STAY	
	EPD		144		69		75		20		-6.7		66		109		22		9		14		13		15													
	Top%		6%		19%		11%		1%		1%		49%		40%		81%		80%		14%		1%		38%													



## Red Angus



### Haack Stockmarket 403M

Stockmarket 403M is another heifer bull with balanced EPDs and plenty of phenotype. He's a thick-made bull with a smooth top. His dam is one of our original C-BAR cows and she never disappoints.

Safe for use on heifers.

Lot 2		HAACK STOCKMARKET 403M											
B JDHAA / 403M	01-01-2024					1A — 100% AR			Ratio		Data		
						# 4965890							
	LSF SAGA 1040Y					Act. BW		93			71		
	PIE STOCKMAN 4051					Adj. WW				487			
	PIE LAKOTA 046					Adj. YW				1,035			
	BIEBER CL STOCKMARKET E1193751659					SC				39 cm			
	ANDRAS FUSION R236					Frame				4.5			
	BIEBER CL ADELLE 475C							EPD Top%		Data			
	BIEBER ADELLE 297Y												
	TR COLT 45 UT806					MARB		0.73	8%			2.34	
	C-BAR EVOLUTION 107Y					YG		0.00	19%				
	LGS ABBY 689S					CW		29	28%				
	C-BAR-RJ MISS MIMI 510C3498943					REA		0.50	4%			12.20	
	RED FINE LINE MULBERRY 26P					FAT		0.03	74%			0.31	
	DAMAR MIMI W085					ADG		0.29	19%			3.6	
	DFRA TARMILY N512					DMI		1.00	79%				
	MPPA: 108 Dam Age: 02-19-2015												
		ProS	HB	GM	CED	BW	WW	YW	MILK	ME	HPG	CEM	STAY
	EPD	124	41	83	13	-3.2	67	113	27	9	13	8	13
	Top%	21%	72%	5%	55%	25%	44%	30%	38%	79%	28%	40%	72%

# Red Angus



Stony 8202F July 2023



## Haack Up The Limit 409M

This is our first year offering 5L Up The Limit sons. Up The Limit stamps his sons consistently; thick tops, depth of rib and structural correctness. His calves have moderate birthweight and tons of vigor. You'll want to keep all the heifers out of this bull.

Recommended for heifers.

Lot 3		HAACK UP THE LIMIT 409M										
B JDHAA / 409M	01-03-2024				1A — 100% AR # 4965930				Ratio		Data	
	5L BOURNE 117-48A				Act. BW		103		80			
	5L ULTIMATUM 1893-03C				Adj. WW				512			
	5L PRETTY GUN 1300-1893				Adj. YW				1,055			
	5L UP THE LIMIT 1096-54F3948469				SC				34 cm			
	5L THE REAL DEAL 1687-143B				Frame				4.5			
	5L LAKOTA 5100-1096				EPD Top%				Data			
	5L LAKOTA 687-5100				MARB		0.85 3%		4.05			
	BUF CRK THE RIGHT KIND U199				YG		0.16 90%					
	5L INDEPENDENCE 560-298Y				CW		12 87%					
	5L BLACK ADINA 525-560				REA		-0.28 99%		11.33			
	C-BAR STONY 8202F3942743				FAT		0.02 57%		0.20			
	RED FINE LINE MULBERRY 26P				ADG		0.26 36%		2.9			
	C-BAR STONY W914				DMI		0.89 69%					
	BROWN-CBAR MS STONY ML P7500											
	MPPA: 103 Dam Age: 03-09-2018											
		ProS	HB	GM	CED	BW	WW	YW	MILK	ME	HPG	CEM
EPD	117	57	59	13	-2.2	71	113	20	0	13	7	14
Top%	31%	40%	31%	48%	42%	29%	31%	95%	31%	24%	63%	54%

## Red Angus



### Haack Stockmarket 411M

This black/red carrier bull has presence and style. Don't over-look him due to his color. Boasting a 13.65" ribeye, modest birthweight and 661# weaning weight! The carcass traits on this bull will add pounds and quality on the rail.

Recommended for heifers.

Lot 4		HAACK STOCKMARKET 411M												
B JDHAA / 411M	01-04-2024				2 — 100% AR				Ratio		Data			
					# 4965960				Act. BW	102	77			
	LSF SAGA 1040Y								Adj. WW	661				
	PIE STOCKMAN 4051								Adj. YW	1,290				
	PIE LAKOTA 046								SC	36 cm				
	BIEBER CL STOCKMARKET E1193751659								Frame	6				
	ANDRAS FUSION R236								EPD Top%		Data			
	BIEBER CL ADELLE 475C								MARB	0.95	1%	2.90		
	BIEBER ADELLE 297Y								YG	0.03	31%			
	SPUR FRANCHISE 7070								CW	43	4%			
	SPUR FRANCHISE OF GARTON								REA	0.65	1%	13.65		
	H & H IRENE LASS 0135								FAT	0.04	86%	0.22		
	C-BAR BRANDY 34H4406359								ADG	0.38	1%	3.7		
	C-BAR ELDORADO 114Z								DMI	1.10	86%			
	C-BAR BRANDY 626D													
	C-BAR W982													
	MPPA: 95 Dam Age: 02-13-2020													
	ProS	HB	GM	CED	BW	WW	YW	MILK	ME	HPG	CEM	STAY		
EPD	174	56	117	13	-1.9	75	136	25	3	14	9	13		
Top%	1%	42%	1%	46%	48%	16%	5%	55%	47%	14%	15%	76%		



Red Angus



Haack Up The Limit 421M

This handsome bull would be a great addition to anyone’s herd. He’s a deep cherry, growthy, smooth, thick bull. This bull has been one that we have kept our eye on throughout his development. This bull is a must-see! Recommended use on cows.

Lot 5		HAACK UP THE LIMIT 421M										
B	01-08-2024		1A — 100% AR									
	JDHAA / 421M		# 4965952									
		5L BOURNE 117-48A				Ratio		Data				
		5L ULTIMATUM 1893-03C				Act. BW		118		90		
		5L PRETTY GUN 1300-1893				Adj. WW		102		658		
5L UP THE LIMIT		1096-54F3948469				Adj. YW		99		1,145		
		5L THE REAL DEAL 1687-143B				SC				39 cm		
		5L LAKOTA 5100-1096				Frame				5.5		
		5L LAKOTA 687-5100						EPD Top%		Data		
		SPUR FRANCHISE OF GARTON				MARB		0.73 8%		2.10		
		9 MILE FRANCHISE 6305				YG		0.06 48%				
		C-BAR ABIGRACE Y11				CW		22 58%				
JDHAA H064345667						REA		0.11 54%		12.91		
		PIE ONE OF A KIND 352				FAT		0.02 48%		0.29		
		C-BAR JOLENE 8121F				ADG		0.35 4%		3.4		
		JEFFRIES MS JOLINE Z243				DMI		1.08 85%				
MPPA:		105 Dam Age: 01-13-2020										
	ProS	HB	GM	CED	BW	WW	YW	MILK	ME	HPG	CEM	STAY
EPD	126	53	73	10	0.0	81	136	22	6	9	5	17
Top%	19%	48%	12%	87%	82%	7%	5%	86%	62%	88%	90%	22%

# Red Angus



## Haack Stockmarket 422M

422M is another Stockmarket son in the line-up, who carries an excellent set of EPDs. Stockmarket E119 is known for consistent calving ease and carcass merit. 422M continues that legacy with a top 9% BW and top 2% Marbling EPDs.

Safe for use on heifers.

Lot 6		HAACK STOCKMARKET 422M														
B JDHAA / 422M	01-08-2024				2 — 100% AR				Ratio				Data			
					# 4965964				Act. BW	106				78		
	LSF SAGA 1040Y								Adj. WW				585			
	PIE STOCKMAN 4051								Adj. YW				1,060			
	PIE LAKOTA 046								SC				34 cm			
	BIEBER CL STOCKMARKET E1193751659								Frame				5			
	ANDRAS FUSION R236								EPD Top%			Data				
	BIEBER CL ADELLE 475C								MARB	0.88	2%	3.86				
	BIEBER ADELLE 297Y								YG	0.11	75%					
	BECKTON DOMINOR T122 Z1								CW	12	87%					
	3SCC DOMAIN A163								REA	0.11	54%	11.71				
	C-BAR STONY 118J4503091								FAT	0.05	97%	0.18				
	SPUR FRANCHISE OF GARTON								ADG	0.30	14%	2.5				
	C-BAR STONY 801F								DMI	1.09	86%					
	C-BAR MS STONY A302															
	MPPA: 97		Dam Age: 01-16-2021													
		ProS	HB	GM	CED	BW	WW	YW	MILK	ME	HPG	CEM	STAY			
	EPD	137	68	69	15	-4.6	68	117	26	5	13	9	16			
	Top%	10%	20%	17%	21%	9%	38%	24%	47%	59%	22%	15%	32%			

A look back on 2023...how very blessed we are.



## Red Angus



### Haack Red Baron 425M

This bull is extremely eye-appealing; which is no surprise, as he has the same profile as his sire C-Bar Red Baron 207J. This bull will cover heifers and sire the kind of heifers you want to retain. With his STAY in the top 1%, modest BW, top third MILK and therefore a strong HB, look for him to make your next group of developing heifers. This bull was tested and is ECC free.

Safe for use on heifers.

Lot 7		HAACK RED BARON 425M										
B JDHAA / 425M	01-09-2024				1A — 100% AR							
					# 4965938				Ratio		Data	
	FRITZ JUSTICE 8013				Act. BW		93				71	
	LACY COLLUSION 115F				Adj. WW						480	
	LACY LAKOTA 8105				Adj. YW						956	
	C-BAR RED BARON 207J4534321				SC						35.5 cm	
	MUSGRAVE AVIATOR				Frame						5	
	C-BAR LEANNA 8141F				EPD Top%						Data	
	LASO LEANNA BC114R				MARB		0.83 4%				2.31	
	LEACHMAN PLEDGE A282Z				YG		0.05 43%					
	HXC ALLEGIANCE 5502C				CW		15 80%					
	HXC 100Y				REA		0.14 47%				12.33	
	C-BAR LEANNA 951G4148692				FAT		0.03 70%				0.15	
	C-BAR ELDORADO 114Z				ADG		0.20 79%				2.9	
	LASO LEANNA X23B				DMI		1.29 94%					
	LASO LEANNA BC114R											
MPPA: 97 Dam Age: 01-11-2019												
	ProS	HB	GM	CED	BW	WW	YW	MILK	ME	HPG	CEM	STAY
EPD	146	94	52	16	-4.7	64	96	28	9	10	9	22
Top%	6%	2%	46%	14%	8%	55%	68%	31%	80%	81%	12%	1%



## Red Angus



### Haack Relentless 430M

This STRA Relentless son is a versatile package. He's got calving ease blended with carcass traits. Probably one of our favorite Relentless sons we've raised to date. His young, 3 year old dam boasts a MPPA of 105 and raised this bull as a heifer. His dam bred back AI while he was at her side, and her calf this year looks just as great!

Safe for use on heifers.

Lot 8		HAACK RELENTLESS 430M										
B JDHAA / 430M  BIEBER HARD DRIVE Y120 BIEBER DRIVEN C540 BIEBER JOAN 309Y  STRA RELENTLESS3955293 LARSON SUN KING 016 STRA CHEREBAL 305 STRA MISS TRACKER 141  PIE QUARTERBACK 789 PIE QUARTERBACK 0817 JEFFRIES MS JOLINE Z243  JDHAA K374697599 3SCC DOMAIN A163 C-BAR ABIGRACE 18H C-BAR ABIGRACE 417B  MPPA:	01-10-2024		1A — 100% AR # 4966014		Ratio		Data					
					Act. BW 103		72					
					Adj. WW		586					
					Adj. YW		980					
					SC		36 cm					
					Frame		5					
					EPD Top%		Data					
					MARB 0.98 1%		3.24					
					YG 0.12 75%							
					CW 31 23%							
					REA 0.42 7%		11.04					
					FAT 0.06 99%		0.15					
					ADG 0.22 68%		2.8					
					DMI 0.52 26%							



## Red Angus



### Haack Up The Limit 432M

Another 5L Up The Limit son with a lot of power and style. An easy-fleshing bull who can get it all done: solid the calving ease department, stout weaning EPD/actual data and carcass merit. Don't miss out on this bull.

Safe for use on heifers.

Lot 9		HAACK UP THE LIMIT 432M											
B JDHAA / 432M	01-11-2024				1A — 100% AR				Ratio		Data		
					# 4965900								
	5L BOURNE 117-48A								Act. BW	93	72		
	5L ULTIMATUM 1893-03C								Adj. WW	98	635		
	5L PRETTY GUN 1300-1893								Adj. YW	101	1,185		
	5L UP THE LIMIT 1096-54F3948469								SC		35.5 cm		
	5L THE REAL DEAL 1687-143B								Frame		5		
	5L LAKOTA 5100-1096								EPD Top%		Data		
	5L LAKOTA 687-5100								MARB	0.88	2%	2.96	
	C-T DKK DUKE 1100								YG	0.21	97%		
	C-T ROYAL DUKE 4090								CW	8	93%		
	C-T BLOCKANA 1042								REA	-0.16	95%	12.76	
	FEDES LAKINA A15-E713737473								FAT	0.06	99%	0.32	
	HXC CONQUEST 4405P								ADG	0.27	29%	3.3	
	FEDES LAKINA Y118 A15								DMI	1.02	81%		
	FEDES LAKINA Y118												
MPPA: 100 Dam Age: 02-15-2017													
	ProS	HB	GM	CED	BW	WW	YW	MILK	ME	HPG	CEM	STAY	
EPD	116	64	51	13	-3.7	74	118	22	6	10	9	16	
Top%	32%	27%	47%	46%	18%	19%	22%	81%	61%	73%	20%	28%	

## Red Angus



### Haack Treadstone 450M

This bull is moderate-framed and packs a punch. He brings to the table calving ease, ribeye area and marbling capabilities! He is a deep red with a darkened muzzle and legs. His dam was a heifer last year, bred up AI and calved this year again unassisted.

Safe for use on heifers.

Lot 10		HAACK TREADSTONE 450M										
B JDHAA / 450M  5L BOURNE 117-48A FEDDES TREADSTONE 704-9352 FEDS BLOCKANA C34 704  JDHAA K334697593 C-T DOMINATE 7067 FEDDES BLOCKANA A2-048 FEDDES BLOCKANA R82 A2  BIEBER DRIVEN C540 STRA RELENTLESS STRA CHEREBAL 305 C-BAR ABIGRACE 213K4648761 C-BAR ELDORADO 114Z C-BAR ABIGRACE 555C C-BAR ABIGRACE 255Z  MPPA: Dam Age: 01-16-2022	01-30-2024		1A — 100% AR # 4965980		Ratio		Data					
					Act. BW 98		69					
					Adj. WW		536					
					Adj. YW		892					
					SC		34 cm					
					Frame		4.5					
					EPD Top%		Data					
					MARB 0.94		1%		2.74			
					YG 0.12		77%					
					CW 14		81%					
					REA 0.01		75%		12.16			
					FAT 0.04		86%		0.13			
					ADG 0.22		67%		2.6			
					DMI 0.75		53%					

## Red Angus



### Haack Domain 459M

Rounding out this year's offering is Haack Domain 459M. He's a black-hided bull whose EPDs are in the top one-third of the breed for ProS, HB, GM, WW, YW, Milk, HPG, STAY, MARB, CW, REA and ADG. He will make a great addition to a commercial cow-calf operation. Whether you're selling weaned calves, or finishing cattle, he should add pounds to his calves.

This bull is recommended for larger-framed heifers or cows. He sells as a commercial Red Angus black/red carrier bull.

Lot 11		HAACK DOMAIN 459M										
B	02-05-2024	Commercial — 100% AR										
JDHAA / 459M		# 4965950										
BECKTON DOMINOR T122 Z1		Ratio		Data								
3SCC DOMAIN A163				Act. BW	103	86						
3SCC EUCLA X723				Adj. WW		577						
C-BAR DOMAIN 0209H 4378941				Adj. YW		1,055						
SPUR FRANCHISE OF GARTON				SC		31 cm						
C-BAR ABIGRACE 637D		Frame		5								
C-BAR ABIGRACE Y11		EPD Top%		Data								
BROWN JYJ REDEMPTION Y1334				MARB	0.59	20%	2.9					
FEDDES SILVER BOW B226				YG	0.07	52%						
FEDDES LAKINA Y17				CW	31	23%						
JDHAA H14 4345651				REA	0.33	18%	12.96					
5L ADVANTAGE				FAT	0.03	79%	0.27					
FEDDES SLEEK B90-E94				ADG	0.28	23%	3.5					
FEDDES SLEEK X166 B90		DMI	0.78	56%								
MPPA: 110 Dam Age: 02-08-2020												
	ProS	HB	GM	CED	BW	WW	YW	MILK	ME	HPG	CEM	STAY
EPD	139	65	74	9	0.3	70	115	28	4	13	4	18
Top%	9%	25%	12%	92%	85%	33%	28%	28%	51%	21%	94%	14%

## Red Angus Reference Sires

### A BIEBER CL STOCKMARKET E119

01-15-2017

1A — 100% AR  
3751659

LSF SAGA 1040Y  
PIE STOCKMAN 4051  
PIE LAKOTA 046

ANDRAS FUSION R236  
BIEBER CL ADELLE 475C  
BIEBER ADELLE 297Y

MPPA: 100 Dam Age: 03-16-15



Ratio		Data
Act. BW	85	64
Adj. WW	108	640
Adj. YW	111	1203
SC	Frame	
EPD		Data
MARB	1.22	1%
YG	0.17	88%
CW	23	51%
REA	0.31	23%
FAT	0.08	99%
ADG	0.33	10%
DMI	1.55	96%

	ProS	HB	GM	CED	BW	WW	YW	MILK	ME	HPG	CEM	STAY
EPD	143	57	86	16	-4.8	79	132	26	8	14	12	13
Top%	10%	38%	8%	20%	9%	15%	11%	48%	68%	24%	3%	71%

Photo credit: Select Sires - EPDs updated as of 1-20-25

### B 5L UP THE LIMIT 1096-54F

02-02-2018

1A — 100% AR  
3948469

5L BOURNE 117-48A  
5L ULTIMATUM 1893-03C  
5L PRETTY GUN 1300-1893

5L THE REAL DEAL 1687-143B  
5L LAKOTA 5100-1096  
5L LAKOTA 687-5100

MPPA: 101 Dam Age: 02-17-2016



Ratio		Data
Act. BW		58
Adj. WW	94	534
Adj. YW	95	956
SC	Frame	
EPD		Data
MARB	0.93	3%
YG	0.21	93%
CW	19	65%
REA	0.00	73%
FAT	0.07	98%
ADG	0.27	36%
DMI	1.06	78%

	ProS	HB	GM	CED	BW	WW	YW	MILK	ME	HPG	CEM	STAY
EPD	129	63	66	13	-1.9	73	116	16	-2	16	6	14
Top%	19%	29%	26%	46%	46%	29%	31%	97%	20%	7%	68%	53%

Photo credit: 5L RED ANGUS - EPDs updated as of 1-20-25

### C C-BAR RED BARON 207J

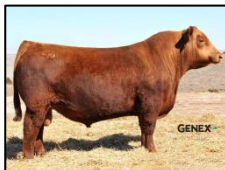
03-01-2021

1A — 100% AR  
4534321

FRITZ JUSTICE 8013  
5L ULTIMATUM 1893-03C  
LACY LAKOTA 8105

MUSGRAVE AVIATOR  
C-BAR LEANNA 8141F  
LASO LEANNA BC114R

MPPA: 102 Dam Age: 01-31-2017



Ratio		Data
Act. BW		72
Adj. WW	105	754
Adj. YW	104	1360
SC	Frame	
EPD		Data
MARB	0.62	20%
YG	0.02	31%
CW	45	8%
REA	0.36	18%
FAT	-0.00	16%
ADG	0.27	39%
DMI	1.25	88%

	ProS	HB	GM	CED	BW	WW	YW	MILK	ME	HPG	CEM	STAY
EPD	135	62	73	12	0.1	80	123	27	9	10	8	17
Top%	15%	31%	17%	62%	78%	13%	13%	39%	74%	80%	28%	26%

Photo credit: Genex - EPDs updated as of 1-20-25

**D STRA RELENTLESS**

03-05-2018

1A — 100% AR  
3955293BIEBER HARD DRIVE Y120  
BIEBER DRIVEN C540  
BIEBER JOAN 309YLARSON SUN KING 016  
STRA CHEREBAL 305  
STRA MISS TRACKER 141

MPPA: 103 Dam Age: 02-17-2013



Ratio		Data		
Act. BW		58		
Adj. WW	94	534		
Adj. YW	95	956		
SC	Frame			
EPD		Top%	Data	
MARB	1.18	1%		
YG	0.13	74%		
CW	9	88%		
REA	-0.05	80%		
FAT	0.04	86%		
ADG	0.18	88%		
DMI	0.14	7%		

MILK	ME	HPG	CEM	STAY
41	-17	19	8	15
1%	3%	1%	33%	40%

Photo credit: ST Genetics - EPDs updated as of 1-20-25

**E JDHAA TREADSTONE K33**

01-26-2022

1A — 100% AR  
46975935L BOURNE 117-48A  
FEDDES TREADSTONE 704-9352  
FEDS BLOCKANA C34 704C-T DOMINATE 7067  
FEDDES BLOCKANA A2-048  
FEDDES BLOCKANA R82 A2

MPPA: 100 Dam Age: 01-31-2020



Ratio		Data		
Act. BW	93	70		
Adj. WW	98	566		
Adj. YW		956		
SC	Frame			
EPD		Top%	Data	
MARB	0.43	48%		
YG	0.05	40%		
CW	25	46%		
REA	0.12	49%		
FAT	0.01	31%		
ADG	0.24	55%		
DMI	0.95	68%		

MILK	ME	HPG	CEM	STAY
32	5	13	8	15
9%	56%	35%	31%	44%

Yearling photo 2023 - EPDs updated as of 1-20-25

**F C-BAR DOMAIN 0209H**

01-17-2020

2 — 100% AR  
4378941BECKTON DOMINOR T122 Z1  
3SCC DOMAIN A163  
3SCC EUCLA X723SPUR FRANCHISE OF GARTON  
C-BAR ABIGRACE 637D  
C-BAR ABIGRACE Y11

MPPA: 112 Dam Age: 02-25-2016



Ratio		Data			
Act. BW		58			
Adj. WW	94	534			
Adj. YW	95	956			
SC	Frame				
EPD		Top%	Data		
MARB	0.61	21%			
YG	0.09	58%			
CW	36	18%			
REA	0.42	13%			
FAT	0.04	86%			
ADG	0.29	28%			
DMI	0.65	40%			
MILK		ME	HPG	CEM	STAY
31		7	16	4	15
14%		64%	6%	86%	48%

Two-year old photo 2022 - EPDs updated as of 1-20-25



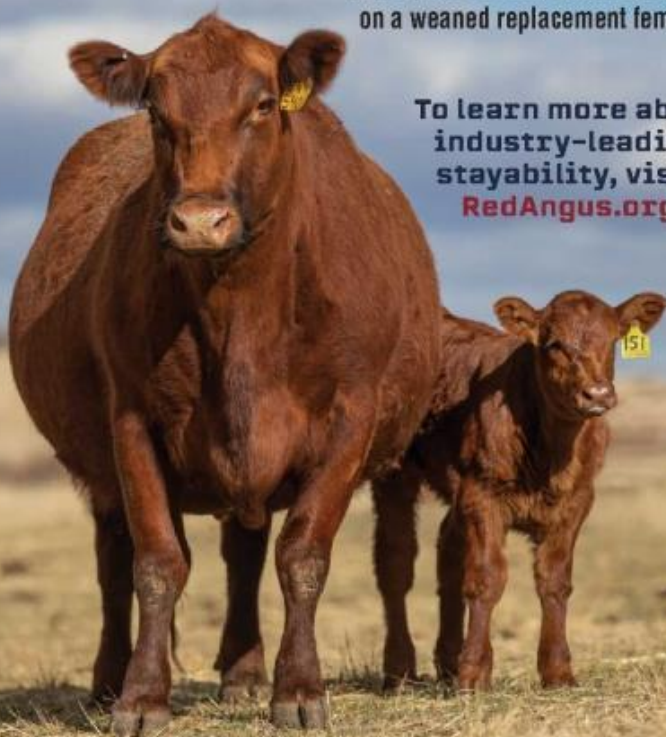
# PARAMOUNT

**Elevate to a more valuable female.**

For over a decade, Red Angus females have commanded more at auction than all other breeds, including Angus. According to Superior Livestock data, Red Angus heifers brought nearly \$17/cwt more –

**that equates to a \$92/head premium  
on a weaned replacement female.**

**To learn more about  
industry-leading  
stayability, visit  
[RedAngus.org](http://RedAngus.org)**



**RED ANGUS**

**RANCH TESTED. RANCHER TRUSTED.**