



7th Annual Production Sale

Showcasing Red & Black Angus
Yearling Bulls and Bred Red Angus Heifers



Featuring:

Red Angus Bulls (13 Registered, 1 Commercial)

Black Angus Bulls (7 Registered)

15 Bred Commercial Red Angus Heifers

Welcoming Dustin & Alysia Clark and Jake & Edie Stutzman



Jeremy & Asia Haack
402-860-4096
402-366-7409
haackredangus.com
haackredangus@gmail.com

Welcome Cattlemen,

Thank you for considering our yearling bulls! Our base of genetic influence has been sourced from some of the most prominent Red Angus breeders in the country, with the goal of producing moderate-framed,



productive, fertile cattle with excellent feet and udders. Furthermore, we find it important to ensure a quality eating experience. As part of our farm-to-fork program, we aggregate data (Yield and Quality Grade) on every carcass to ensure we're selecting genetics that perform in the feedyard and provide a product that we can boast about on the consumers' plate.

You may notice more 5L Up The Limit bulls this year. It is unfortunate that he is deceased, as he consistently stamped his calves with moderate birthweight, thickness down the top, depth and structural correctness. We have kept nearly every daughter he sired to perpetuate his genetics in our herd. The other sire groups include a bull sired by Bieber Payday K113 and a group out of a bull we raised; Haack Stockmarket K20.

Our Black Angus bulls have decades of experience behind them. Many of our Black Angus cows were purchased from our neighbor, Jim Barr, who has a lifetime's worth of experience in the Black Angus breed; for which, we are grateful! There are characteristics of Jim's herd which fit well with our goals for the Red Angus cattle; moderately framed, productive and efficient.

This year, we welcomed a couple like-minded breeders to the sale. Dustin and Alysia Clark will be offering bulls from the top of their registered Black Angus herd. Jake and Edie Stutzman have purchased some of our replacement heifers the past few years and will be offering some of their own replacements as bred heifers. We are excited to begin these partnerships and think they will bring added value to our customers.

We welcome you to our Open House on February 14-15, 2026 at The Yard: 1006 Road 15 – York, NE. You will find the bulls are balanced, smooth-gaited and easy-going. The bred heifers are located off-site, however, will still be available for viewing. Check out the bred heifer page for details. We invite you to come out and take a look at the offerings for yourself.

We look forward to seeing you & enjoy the bulls,

Jeremy & Asia

Raising the Bulls

This year's bulls gained an average of 3.2#/day during the growing period, the 60 days prior of taking yearling weights. Once yearling weights are taken, we transition the bulls to a maintenance diet high in forage so they are prepared to go to work during their first breeding season. We don't strive to have our bulls gain too much too fast, as their foot structure and longevity are very important to us. We also pride ourselves in the disposition of our bulls. We handle them often and expose them to kids, dogs, and ATV's.



Terms

Bulls will have passed their breeding soundness exam prior to possession. They have been tissue sampled and are awaiting GGP DNA enhanced EPDs (final data to be available on Open House weekend). Bulls were ultrasounded for carcass data to help assist you in making the right purchase for your needs. Bulls will be guaranteed to be breeders in their first season, outside of any neglect or injury. Bulls are expected to be picked up/delivered no later than May 1st, 2026 (unless other arrangements are made).

Bulls will be available for viewing February 14-15, 2026 at The Yard: 1006 Road 15 – York, NE.

This year, our sale is a timed auction format hosted by DV Auction. Bidding will open on February 14 at 8am and will end February 16th at 7pm with a 5-minute bid-off.

1. The terms of the sale are cash/wire. Payment will be made within 7 days of purchase. If payment is not received or arranged, we reserve the right to own back the animal(s). We will invoice the bidder per the information they provide DV Auction during approval process.
2. Each animal will be sold to the highest bidder.
3. Any announcement made by seller on sale day will take precedence over any previous information.
4. Health certificates will be furnished for shipment anywhere in the United States.
5. Each animal becomes buyer's risk as soon as sold. We recommend you purchase insurance for your bull. Personally, we have used James F Bessler LLC for livestock mortality insurance (contact information below), but you can choose another provider if you wish. Seller will ensure animals are fed and cared for, free of charge to purchaser, until loaded for shipment or until the expiration of May 1, 2026.
6. Everyone attending the Open House does so at their own risk. Owners, or other helpers do not assume responsibility, legal or otherwise, for damages of any kind.
7. Trucking by arrangement. Seller will be able to help coordinate or assist locating available trucking if purchaser cannot pick up animal(s) themselves.
8. The above terms and conditions shall constitute a contract between the buyer and seller of each animal sold. These cattle sell in accordance with the Sale Terms and Conditions set forth by the Red Angus Association of America.



Jim Bessler
815-762-2641 Cell
815-562-8980 Office
www.jamesfbessler.com



James F Bessler LLC
LIVESTOCK MORTALITY INSURANCE

Registered Red Angus



Haack Up The Limit 506N

What a bull to start off the sale! 506N has been a stand-out since birth. His dam, 510C, is one of our highest producing cows with her sons consistently at the top of our bull offerings. Retaining the right to collect 100 straws of semen at buyer's convenience.

Safe for use on larger-framed heifers and cows.

LOT 1		HAACK UP THE LIMIT 506N											
B		01-09-2025				2 — 100% AR%				Ratio		Data	
JDHAA / 506N						# 5191385				Act. BW		107	89
		5L BOURNE 117-48A								Act. WW			708
		5L ULTIMATUM 1893-03C								1-16-26			1,085
		5L PRETTY GUN 1300-1893								SC			37
5L UP THE LIMIT 1096-54F 3948469										EPD Top%		Data	
		5L THE REAL DEAL 1687-143B								MARB		0.47	42%
		5L LAKOTA 5100-1096								YG		0.06	56%
		5L LAKOTA 687-5100								CW		15	75%
		TR COLT 45 UT806								REA		0.08	59%
		C-BAR EVOLUTION 107Y								FAT		0.02	72%
		LGS ABBY 689S								ADG		0.26	40%
C-BAR-RJ MISS MIMI 510C 3498943										DMI		0.70	51%
		RED FINE LINE MULBERRY 26P											3.60
		DAMAR MIMI W085											
		DFRA TARMILY N512											
MPPA: 106		Dam Age: 02-19-2015											
	ProS	HB	GM	CED	BW	WW	YW	MILK	ME	HPG	CEM	STAY	
EPD	77	32	45	10	-0.7	72	113	20	3	16	4	11	
Top%	86%	85%	66%	79%	73%	30%	34%	94%	45%	4%	93%	88%	

As of 1-14-26

Registered Red Angus



Haack Up The Limit 507N

507N is the first heifer bull of the offering. His dam 215K is a second-calf heifer who is showing a lot of promise.

Safe for use on larger-framed heifers and cows.

Lot 2		HAACK UP THE LIMIT 507N												
B JDHAA / 507N	01-09-2025		2 — 100% AR%		Ratio								Data	
			# 5191471		Act. BW								101	81
	5L BOURNE 117-48A				Act. WW									524
	5L ULTIMATUM 1893-03C				1-16-26									886
	5L PRETTY GUN 1300-1893				SC									34.5
5L UP THE LIMIT 1096-54F 3948469	5L THE REAL DEAL 1687-143B													
	5L LAKOTA 5100-1096													
	5L LAKOTA 687-5100				EPD Top%								Data	
	FRITZ JUSTICE 8013				MARB								0.77	8%
	LACY COLLUSION 115F				YG								0.04	44%
C-BAR ABIGRACE 215K 4648765	LACY LAKOTA 8105				CW								18	68%
	SPUR FRANCHISE OF GARTON				REA								0.25	28%
	C-BAR ABIGRACE 762E				FAT								0.03	86%
	C-BROWN&KM ABIGRACE T715				ADG								0.26	39%
	MPPA: 87 Dam Age: 01-16-2022				DMI								0.86	67%
	ProS	HB	GM	CED	BW	WW	YW	MILK	ME	HPG	CEM	STAY		
EPD	133	65	68	12	-1.1	69	111	15	0	15	6	15		
Top%	15%	27%	19%	60%	64%	38%	38%	99%	30%	5%	71%	46%		

As of 1-14-26

Registered Red Angus



Haack Up The Limit 518N

518N is part of our first offspring from our C-Bar Red Baron 207J daughters. We have been very pleased with them so far.

Recommend use on larger-framed heifers and cows.

Lot 3		HAACK UP THE LIMIT 518N												
B JDHAA / 518N 5L BOURNE 117-48A 5L ULTIMATUM 1893-03C 5L PRETTY GUN 1300-1893 5L UP THE LIMIT 1096-54F 3948469 5L THE REAL DEAL 1687-143B 5L LAKOTA 5100-1096 5L LAKOTA 687-5100 LACY COLLUSION 115F C-BAR RED BARON 207J C-BAR LEANNA 8141F JDHAA L31 4873206 FEDDES SILVER BOW B226 FEDDES RAINBOW X49-E84 FEDDES RAINBOW X49	01-12-2025	2 — 100% AR%						Ratio		Data				
	# 5191505				Act. BW		108		84					
					Act. WW				546					
					1-16-26				848					
					SC				33.5					
					EPD Top%				Data					
					MARB		0.72		11%					
					YG		0.09		71%					
					CW		22		55%					
					REA		0.09		58%					
					FAT		0.03		77%					
					ADG		0.27		34%		2.84			
					DMI		1.00		79%					
	MPPA: Dam Age: 01-15-2023													
	ProS	HB	GM	CED	BW	WW	YW	MILK	ME	HPG	CEM	STAY		
EPD	133	71	62	10	-0.3	74	117	19	0	15	6	16		
Top%	15%	18%	28%	73%	79%	22%	26%	96%	32%	8%	66%	38%		

As of 1-14-26

Registered Red Angus



Haack Up The Limit 519N

519N is a heifer bull that comes with some extra growth. We purchased his dam from C-Bar Red Angus several years ago and she always performs.

Safe for use on heifers.

Lot 4		HAACK UP THE LIMIT 519N											
B JDHAA / 519N	01-12-2025				2 — 100% AR%				Ratio		Data		
					# 5191431				Act. BW	89	75		
	5L BOURNE 117-48A								Act. WW		638		
	5L ULTIMATUM 1893-03C								1-16-26		950		
	5L PRETTY GUN 1300-1893								SC		35		
	5L UP THE LIMIT 1096-54F 3948469								EPD Top%		Data		
	5L THE REAL DEAL 1687-143B								MARB	0.88	3%		
	5L LAKOTA 5100-1096								YG	0.10	78%		
	5L LAKOTA 687-5100								CW	20	60%		
	LEACHMAN PLEDGE A282Z								REA	0.08	59%		
	HXC ALLEGIANCE 5502C								FAT	0.03	86%		
	HXC 100Y								ADG	0.27	36%	2.55	
	C-BAR LEANNA 951G 4148692								DMI	1.02	81%		
	C-BAR ELDORADO 114Z												
	LASO LEANNA X23B												
	LASO LEANNA BC114R												
MPPA: 95 Dam Age: 01-11-2019													
ProS		HB	GM	CED	BW	WW	YW	MILK	ME	HPG	CEM	STAY	
EPD	130	56	74	17	-3.3	67	109	20	2	15	7	14	
Top%	18%	43%	13%	17%	24%	47%	41%	93%	37%	8%	41%	62%	

As of 1-14-26

Registered Red Angus



Haack Up The Limit 520N

Another crowd favorite. Hailing from the Abigrace 636D family, 520N with make steers that perform and heifers you'll want to keep.

Recommend use on larger-framed heifers and cows.

Lot 5		HAACK UP THE LIMIT 520N											
B	01-13-2025		2 — 100% AR%		Ratio		Data						
	JDHAA / 520N		# 5191501		Act. BW		107	86					
	5L BOURNE 117-48A				Act. WW			618					
	5L ULTIMATUM 1893-03C				1-16-26			1,030					
	5L PRETTY GUN 1300-1893				SC			33.5					
	5L UP THE LIMIT 1096-54F 3948469												
	5L THE REAL DEAL 1687-143B												
	5L LAKOTA 5100-1096												
	5L LAKOTA 687-5100												
							EPD		Top%	Data			
						MARB		0.69	13%				
						YG		0.09	70%				
						CW		20	62%				
						REA		0.19	37%				
						FAT		0.04	93%				
						ADG		0.28	27%	3.03			
						DMI		0.98	77%				
JDHAA K55 4697627													
ICC PAY RAISE 4886													
C-BAR ABIGRACE 977G													
C-BAR ABIGRACE 636D													
MPPA: 110 Dam Age: 02-19-2022													
		ProS	HB	GM	CED	BW	WW	YW	MILK	ME	HPG	CEM	STAY
EPD		124	65	59	9	-0.1	77	122	22	1	15	5	15
Top%		23%	27%	34%	80%	81%	15%	19%	86%	34%	7%	83%	46%

Registered Red Angus



Haack Up The Limit 527N

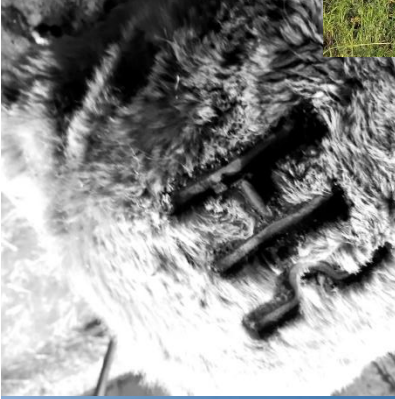
Up The Limit definitely stamps his offspring. Moderate birthweight, great structure and plenty of growth potential.

Safe for use on heifers.

Lot 6		HAACK UP THE LIMIT 527N											
B JDHAA / 527N 5L BOURNE 117-48A 5L ULTIMATUM 1893-03C 5L PRETTY GUN 1300-1893 5L UP THE LIMIT 1096-54F 3948469 5L THE REAL DEAL 1687-143B 5L LAKOTA 5100-1096 5L LAKOTA 687-5100 FRITZ JUSTICE 8013 LACY COLLUSION 115F LACY LAKOTA 8105 C-BAR STONY 220K 4690851 RREDS SENECA 731C C-BAR-RJ STONY 8351F C-BAR MS STONY A305 MPPA: 97 Dam Age: 01-20-2022	01-16-2025	A — 100% AR% # 5191489							Ratio		Data		
	Act. BW	105										84	
	Act. WW											532	
	1-16-26											890	
	SC											34.5	
	EPD Top%										Data		
	MARB	0.59	23%										3.10
	YG	0.13	88%										
	CW	14	80%										
	REA	0.04	67%										
	FAT	0.05	97%										
	ADG	0.25	45%										
	DMI	0.75	56%										
	ProS HB GM CED BW WW YW MILK ME HPG CEM STAY												
	EPD	110	65	45	12	-1.4	73	114	17	1	14	6	16
	Top%	40%	27%	65%	58%	58%	26%	33%	99%	33%	10%	71%	42%

As of 1-14-26

A look back on 2025...how very blessed we are.



Registered Red Angus



Haack Up The Limit 528N

We just can't help but love raising a bull like this out of a home-raised first-calf heifer! This lot will be a great bull for your heifer projects.

Safe for use on heifers.

Lot 7		HAACK UP THE LIMIT 528N												
B	01-16-2025		A — 100% AR%				Ratio		Data					
	JDHAA / 528N		# 5191519				Act. BW		86		65			
	5L BOURNE 117-48A						Act. WW				582			
	5L ULTIMATUM 1893-03C						1-16-26				940			
	5L PRETTY GUN 1300-1893						SC				34			
	5L UP THE LIMIT 1096-54F 3948469													
	5L THE REAL DEAL 1687-143B													
	5L LAKOTA 5100-1096													
	5L LAKOTA 687-5100													
	5L INDEPENDENCE 560-298Y													
JDHAA L09	BROWN PERSEVERANCE D347						EPD		Top%		Data			
	BROWN MS EPIC B555						MARB		0.68		14%			
	JDHAA L09 4873312						YG		0.12		83%			
	ORTON OZARK 7061						CW		17		69%			
	JDHAA H15						REA		0.04		67%			
	3SCC GRETCHEN E107						FAT		0.04		91%			
							ADG		0.26		41%		4.00	
							DMI		0.78		60%			
MPPA:		Dam Age: 01-08-2023												
		ProS	HB	GM	CED	BW	WW	YW	MILK	ME	HPG	CEM	STAY	
EPD		107	47	60	15	-2.8	67	109	19	4	16	7	12	
Top%		45%	62%	31%	25%	32%	46%	43%	96%	49%	2%	49%	81%	

As of 1-14-26

Registered Red Angus



Haack Up The Limit 529N

529N is another great option for heifers. His quiet disposition and smooth gait will have your attention.

Safe for use on heifers.

Lot 8		HAACK UP THE LIMIT 529N										
B		01-16-2025				A — 100% AR%				Ratio		Data
JDHAA / 529N						# 5191439				Act. BW	90	75
		5L BOURNE 117-48A								Act. WW		668
		5L ULTIMATUM 1893-03C								1-16-26		982
		5L PRETTY GUN 1300-1893								SC		35
5L UP THE LIMIT 1096-54F 3948469												
		5L THE REAL DEAL 1687-143B										
		5L LAKOTA 5100-1096										
		5L LAKOTA 687-5100										
		3SCC DOMAIN A163										
		C-T DOMINATE 7067										
		C-T VRDALE 1183										
FEDDES BLOCKANA A2-048 4288907												
		FEDDES MONTANA X44										
		FEDDES BLOCKANA R82 A2										
		FEDDES BLOCKANA R82										
MPPA: 101 Dam Age: 01-31-2020												

As of 1-14-26

Registered Red Angus



Haack Payday 530N

530N is the only Payday son in this year's offering. Calving ease, growth and carcass merit all in one package.

Safe for use on heifers.

Lot 9		HAACK PAYDAY 530N													
B JDHAA / 530N WFL FRANKLY F8276 LARR PAYCHECK 0728 LARR MISS CC FLOWER 7528 BIEBER PAYDAY K113 4620475 BIEBER CL STOCKMAN E116 BIEBER ENCHANTRESS 239H BIEBER ENCHANTRESS 221B MR COACH 1296 FEDDES COACH WOODEN 0237 FEDDES BLOCKANA Y63-C31 FEDDES BLOCKANA 093-3110 4787706 5L BOURNE 117-48A FEDDES BLOCKANA C72-093 FEDDES BLOCKANA Y130-C72 MPPA: Dam Age: 04-13-2023		A — 100% AR%				# 5191503		Ratio		Data					
		Act. BW		87		65									
		Act. WW				624									
		1-16-26				960									
		SC				33									
		EPD Top%				Data									
		MARB		0.64		18%									
		YG		0.15		92%									
		CW		35		11%									
		REA		0.09		58%									
		FAT		0.03		79%									
		ADG		0.34		5%									
		DMI		1.43		97%									
						3.10									
			ProS	HB	GM	CED	BW	WW	YW	MILK	ME	HPG	CEM	STAY	
		EPD	130	59	71	16	-3.9	79	134	26	12	14	9	15	
Top%	18%	37%	16%	17%	16%	11%	7%	47%	89%	18%	15%	45%			

As of 1-14-26

Registered Red Angus



Full brother to 534N; 421M 2025 sale

Haack Up The Limit 534N

534N has the largest weaning and yearling weight in the offering. He provides some extra frame, length and will add pounds on your calves. We sold a full brother to him last year on our sale – don't miss this one!

Recommend for use on cows.

Lot 10		HAACK UP THE LIMIT 534N												
B	01-17-2025	A — 100% AR%						Ratio		Data				
	JDHAA / 534N	# 5191445						Act. BW	117	98				
		5L BOURNE 117-48A						Act. WW		758				
		5L ULTIMATUM 1893-03C						1-16-26		1,110				
		5L PRETTY GUN 1300-1893						SC		42				
	5L UP THE LIMIT 1096-54F 3948469	5L THE REAL DEAL 1687-143B												
		5L LAKOTA 5100-1096												
		5L LAKOTA 687-5100												
		SPUR FRANCHISE OF GARTON												
		9 MILE FRANCHISE 6305												
JDHAA H06	4345667	C-BAR ABIGRACE Y11						MARB	0.62	20%				
		PIE ONE OF A KIND 352						YG	0.11	82%				
		C-BAR JOLENE 8121F						CW	24	47%				
		JEFFRIES MS JOLINE Z243						REA	0.10	55%				
								FAT	0.03	87%				
MPPA: 107 Dam Age: 01-13-2020								ADG	0.32	10%	4.06			
								DMI	1.12	87%				
		ProS	HB	GM	CED	BW	WW	YW	MILK	ME	HPG	CEM	STAY	
EPD		103	42	61	7	0.9	79	130	25	3	15	4	12	
Top%		52%	70%	30%	94%	91%	11%	10%	58%	47%	5%	90%	82%	

As of 1-14-26

Registered Red Angus



Haack Up The Limit 535N

A bull that you won't be able to miss at the Open House. Moderate birthweight, plenty of growth, great feet and deep cherry red.

Recommend use on larger-framed heifers and cows.

Lot 11		HAACK UP THE LIMIT 535N										
B JDHAA / 535N 5L BOURNE 117-48A 5L ULTIMATUM 1893-03C 5L PRETTY GUN 1300-1893 5L UP THE LIMIT 1096-54F 3948469 5L THE REAL DEAL 1687-143B 5L LAKOTA 5100-1096 5L LAKOTA 687-5100 C-BAR ANTICIPATION 101W C-BAR ELDORADO 114Z C-BAR STONY W914 C-BAR JOLENE 767E 3743573 C-BAR CONTOUR 107X JEFFRIES MS JOLINE Z243 BROWN MS BIG SKY U7877 MPPA: 99 Dam Age: 01-19-2017	A — 100% AR% # 5191403				Ratio		Data					
	Act. BW		100				84					
	Act. WW						668					
	1-16-26						1,075					
	SC						33					
							EPD Top%		Data			
	MARB		0.83		5%							
	YG		0.05		47%							
	CW		12		84%							
	REA		0.10		55%							
	FAT		0.03		76%							
	ADG		0.23		63%				3.53			
	DMI		0.76		57%							

As of 1-14-26

Registered Red Angus



Haack Stockmarket 545N

This is the first of the two Haack Stockmarket K20 sons on the sale. We raised and used K20 on our heifers when he was a yearling and the following year we used him on cows. We really liked the way he stamped his calves. K20 paired with one of our favorite Feddes females resulted in a bull whose daughters you'll just have to keep.

Safe for use on heifers.

Lot 12		HAACK STOCKMARKET 545N									
B JDHAA / 545N	02-01-2025		A — 100% AR%		Ratio		Data				
			# 5191395		Act. BW		99		83		
					Act. WW				572		
					1-16-26				992		
					SC				36		
HAACK STOCKMARKET K20 4697573											
C-T THE QUEST 1103											
JEFFRIES MS JANE C842											
MS ADVANCER OF 4L R28P											
5L ADVANTAGE 3267-221Y											
5L ADVANTAGE 2170-165A											
5L ADINA 55-2170											
FEDDES SLEEK B90-E94 3737535											
C-T GRAND DATA 2085											
FEDDES SLEEK X166 B90											
FEDDES SLEEK X166											
MPPA: 98 Dam Age: 03-05-2017											

Registered Red Angus



Haack Stockmarket 552N

552N is the second Stockmarket K20 son and the only black-red carrier on the sale. His granddam is Stony A302, one of the foundation donors at C-BAR.

Safe for use on heifers.

Lot 13		HAACK STOCKMARKET 552N																							
B JDHAA / 552N PIE STOCKMAN 4051 BIEBER CL STOCKMARKET E119 BIEBER CL ADELLE 475C HAACK STOCKMARKET K20 4697573 C-T THE QUEST 1103 JEFFRIES MS JANE C842 MS ADVANCER OF 4L R28P SPUR FRANCHISE 7070 SPUR FRANCHISE OF GARTON H & H IRENE LASS 0135 C-BAR ABIGRACE 832F 3942695 C-BAR EVOLUTION 107Y C-BAR MS STONY A302 C-BAR STONY W928 MPPA: 103 Dam Age: 02-14-2018	02-04-2025		2 — 100% AR% # 5191421		Ratio			Data																	
	Act. BW		95					80																	
	Act. WW							600																	
	1-16-26							929																	
	SC							35																	
				EPD Top%			Data																		
	MARB		0.62		20%																				
	YG		0.06		54%																				
	CW		31		20%																				
	REA		0.37		10%																				
FAT		0.03		88%																					
ADG		0.29		21%		3.24																			
DMI		0.92		72%																					
ProS		HB		GM		CED		BW		WW		YW		MILK		ME		HPG		CEM		STAY			
EPD		128		54		74		13		-2.3		71		118		27		7		10		9		15	
Top%		20%		47%		12%		53%		41%		32%		26%		35%		70%		76%		20%		49%	

As of 1-14-26

Commercial Red Angus



Haack Eastwood 537N

We will be offering 537N as a commercial bull. He was sired by Feddes Eastwood 3284 and his dam is a commercial red angus heifer we purchased from the Feddes Red Angus Ranch. What a great option for a heifer bull – birthweight of 80 pounds and an actual weaning weight of 622 pounds, better than average gains in the growth period and raised by a first-calf heifer!

Safe for use on heifers.

Lot 14 HAACK EASTWOOD 537N													
B 01-21-2025				COMMERCIAL BULL				Ratio		Data			
JDHAA / 537N								Act. BW	95			80	
				BASIN HOBO 0545				Act. WW				622	
				TAC DRIFTER H10				1-16-26				1,010	
				TAC MS VERNA F66 ET				SC				36	
FEDDES EASTWOOD 3284 4787522								EPD Top%		Data			
				BIEBER MAKE MIMI 7249				MARB					
				FEDDES SYMPATHY A42-D82				YG					
				FEDDES SYMPATHY A42				CW					
COMMERCIAL RED ANGUS HEIFER								REA					
								FAT					
								ADG		3.39			
								DMI					

If you're in the market for used construction equipment or are looking to sell your own, give our friends Brandon and Tiff a call!



Consign free and sell smart with no money out of your pocket!
Contact Ogorzolka Enterprise for all your used
construction equipment needs.

402-694-9274

Conveniently located right off Interstate 80
Hampton, Nebraska



Thank you to
Heartland Nutrition
for sponsoring lunch!

Barn Notes:

Registered Black Angus



Pacific JH 502

Leading off the Black Angus offering is Pacific JH 502. His dam is a moderate-framed cow who consistently produces some of our favorite Black Angus calves.

Safe for use on heifers.

Lot 15		PACIFIC JH 502									
		12-31-2024					100% AA				
TATTOO 502		# 21425054					Ratio		Data		
		MOGCK BULLSEYE#*					Act. BW		80		
		HOOVER NO DOUBT#+*					Act. WW		628		
		MISS BLACKCAP ELLSTON J2*					1-16-26		1,010		
STERLING PACIFIC 904 AAA 19444025+*		G A R PROPHET#+*					SC		35.5		
		BALDRIDGE ISABEL B082+*									
		BALDRIDGE ISABEL Y69*									
		LEONID OF WYE#									
		CLAYMONT OF WYE UMF 10834*									
		CLOVA OF WYE UMF 9607#									
BLANCHE JB 90 AAA 19559909		SYDGEN TRUST GA 3035+*									
		BLANCHE JB 74					ADG		2.65		
		BLANCHE JB 81#									
		#Pathfinder, +Embryo Transplant, *Parents Qualified									
		CED	BW	WW	YW	MILK	CEM	CW	RE	FAT	MARB
EPD		+6	+6	+59	+105	+16	+10	+37	+36	+020	+78
Top%		55%	35%	80%	80%	95%	30%	90%	90%	50%	45%

As of 1-23-26

Registered Black Angus



Exclusive JH 531

Exclusive JH 531 is a smooth, growthy, deep black bull. We enjoy our calves out of Musgrave 316 and the outcross pedigree is one that you can incorporate into your herd. 531's dam is a larger-framed cow with good feet, a good udder and a great disposition.

Recommend use on cows.

Lot 16		EXCLUSIVE JH 531									
		01-17-2025		100% AA							
TATTOO 552				# 21420971		Ratio		Data			
		CONNEALY CAPITALIST 028#*				Act. BW		99			
		LD CAPITALIST 316#+*				Act. WW		634			
		LD DIXIE ERICA 2053				1-16-26		1,050			
MUSGRAVE 316 EXCLUSIVE AAA #*18130471						SC		37			
		MUSGRAVE FOUNDATION#*									
		MUSGRAVE PRIM LASSIE 163-386*									
		SCR PRIM LASSIE 80634#									
		SYDGEN TRUST 6228 #*									
		SYDGEN TRUST GA 3035+*									
		SYDGEN BLACKBIRD GA 051+									
QUEEN LOIS JB 51 AAA 18234271											
		COLEMAN REGIS 904#*									
		QUEEN LOIS 20#									
		QUEEN LOIS 05#									
		#Pathfinder, +Embryo Transplant, *Parents Qualified									
						EPD Top%		Data			
						ADG		4.87			
		CED	BW	WW	YW	MILK	CEM	CW	RE	FAT	MARB
EPD		-2	+3.7	+71	+124	+26	+9	+46	+61	+026	+50
Top%		95%	95%	45%	45%	50%	40%	75%	65%	60%	75%

As of 1-23-26

Registered Black Angus



DC Magnum 522

Welcoming the first lot from Dustin and Alysia Clark's farm. DC Magnum 522 is a nice, thick-made bull out of a young Big Valley cow. The Magnum calves have a lot of vigor at birth, he should sire thick-made calves.

Recommend for use on cows.

Lot 17		DC MAGNUM 522									
		01-15-2025				100% AA					
TATTOO 522N		# 21486212				Ratio		Data			
		KCF BENNET SOUTHSIDE#*				Act. BW		88			
		MEAD MAGNITUDE#*				Act. WW		705			
		MEAD PRIMROSE N198#*				1-16-26		1,055			
SAV MAGNUM 1335 AAA *20159546						SC		36			
		LD CAPITALIST 316#+*									
		SAV EMBLYNETTE 9023*									
		SAV EMBLYNETTE 7505+*									
		CONNEALY DRY VALLEY*									
		CONNEALY BIG VALLEY*									
		BUNTY LAY OF CONANGA 4930#									
O A LASSIE 2022 AAA 20550579											
		CONNEALY BLACK GRANITE#*									
		SA LASSIE 526									
		SA LASSIE 1022									
		#Pathfinder, +Embryo Transplant, *Parents Qualified									
		CED	BW	WW	YW	MILK	CEM	CW	RE	FAT	MARB
EPD		+7	+1.1	+81	+145	+27	+13	+54	+73	+028	+61
Top%		45%	50%	20%	15%	45%	10%	55%	50%	60%	65%

As of 1-23-26

Registered Black Angus



DC Craftsman 533

The final lot from the Clark family is DC Craftsman 533, a moderate-framed bull. He is out of a first-calf Deer Valley Growth Fund heifer who is a heavy milker and has an excellent disposition.

Recommend for use on larger-framed heifers.

Lot 18 DC CRAFTSMAN 533																																												
01-14-2025						100% AA			<table><tr><th colspan="2">Ratio</th><th>Data</th></tr><tr><td>Act. BW</td><td></td><td>85</td></tr><tr><td>Act. WW</td><td></td><td>650</td></tr><tr><td>1-16-26</td><td></td><td>1,000</td></tr><tr><td>SC</td><td></td><td>36.5</td></tr></table>			Ratio		Data	Act. BW		85	Act. WW		650	1-16-26		1,000	SC		36.5																		
Ratio		Data																																										
Act. BW		85																																										
Act. WW		650																																										
1-16-26		1,000																																										
SC		36.5																																										
TATTOO 533N						# 21488575																																						
SITZ STELLAR 726D#*																																												
SITZ RESILIENT*																																												
SITZ MISS BURGESS 1856*																																												
CONNEALY CRAFTSMAN AAA 820132505																																												
CONNEALY NIOBRARA 5451*																																												
BLACK CATHY OF CONANGA 8521#*																																												
BLACK CARLA OF CONANGA 450																																												
									<table><tr><th colspan="2">EPD Top%</th><th>Data</th></tr><tr><td>ADG</td><td>0.28</td><td>27%</td><td>3.10</td></tr></table>			EPD Top%		Data	ADG	0.28	27%	3.10																										
EPD Top%		Data																																										
ADG	0.28	27%	3.10																																									
BASIN PAYWEIGHT 1682#+*																																												
DEER VALLEY GROWTH FUND#+*																																												
DEER VALLEY RITA 36113+*																																												
O A ERICA 1233 AAA 20851547																																												
PA POWER TOOL 9108#+*																																												
SA ERICA 514																																												
SA ERICA 312																																												
#Pathfinder, +Embryo Transplant, *Parents Qualified																																												
<table><tr><td></td><td>CED</td><td>BW</td><td>WW</td><td>YW</td><td>MILK</td><td>CEM</td><td>CW</td><td>RE</td><td>FAT</td><td>MARB</td></tr><tr><td>EPD</td><td>+7</td><td>+8</td><td>+72</td><td>+126</td><td>+33</td><td>+10</td><td>+52</td><td>+66</td><td>+042</td><td>+74</td></tr><tr><td>Top%</td><td>45%</td><td>40%</td><td>40%</td><td>45%</td><td>15%</td><td>30%</td><td>60%</td><td>55%</td><td>75%</td><td>50%</td></tr></table>													CED	BW	WW	YW	MILK	CEM	CW	RE	FAT	MARB	EPD	+7	+8	+72	+126	+33	+10	+52	+66	+042	+74	Top%	45%	40%	40%	45%	15%	30%	60%	55%	75%	50%
	CED	BW	WW	YW	MILK	CEM	CW	RE	FAT	MARB																																		
EPD	+7	+8	+72	+126	+33	+10	+52	+66	+042	+74																																		
Top%	45%	40%	40%	45%	15%	30%	60%	55%	75%	50%																																		

As of 1-23-26

Registered Black Angus



Exclusive JH 538

Exclusive JH 538 is another Musgrave 316 son. This bull has length, is smooth-shouldered and has a deep rib.

Safe for use on larger-framed heifers and cows.

Lot 19 EXCLUSIVE JH 538																									
01-23-2025						100% AA		<table><thead><tr><th colspan="2">Ratio</th><th>Data</th></tr></thead><tbody><tr><td>Act. BW</td><td></td><td>89</td></tr><tr><td>Act. WW</td><td></td><td>578</td></tr><tr><td>1-16-26</td><td></td><td>904</td></tr><tr><td>SC</td><td></td><td>38</td></tr></tbody></table>			Ratio		Data	Act. BW		89	Act. WW		578	1-16-26		904	SC		38
Ratio		Data																							
Act. BW		89																							
Act. WW		578																							
1-16-26		904																							
SC		38																							
TATTOO 538						# 21420974																			
CONNEALY CAPITALIST#*																									
LD CAPITALIST 316#+*																									
LD DIXIE ERICA 2053																									
MUSGRAVE 316 EXCLUSIVE AAA #*18130471																									
MUSGRAVE FOUNDATION#*																									
MUSGRAVE PRIM LASSIE 163-386*																									
SCR PRIM LASSIE 80634#																									
SYDGEN TRUST 6228#*																									
SYDGEN TRUS GA 3035+*																									
SYDGEN BLACKBIRD GA 051+																									
ROSEBUD JB 278 AAA18902660																									
OCC HOMER 650H#*																									
ROSEBUD JB 211#																									
JB ROSEBUD JB 95																									
#Pathfinder, +Embryo Transplant, *Parents Qualified																									
	CED	BW	WW	YW	MILK	CEM	CW	RE	FAT	MARB															
EPD	+3	+1.2	+58	+103	+26	+9	+43	+.58	+.011	+.49															
Top%	75%	50%	80%	80%	50%	40%	80%	65%	40%	75%															

As of 1-23-26

Registered Black Angus



Architect JB 51

Architect JB 51 is a long-sided bull who is balanced from front to back in terms of his muscle. His dam's genetics helm from the Wye herd in Maryland. This bull was born unassisted and weighed 77 pounds, but due to his +3.3 BW and -3 CED EPDs, we are recommending him to be used on larger-framed heifers and cows.

Recommend use on larger-framed heifers and cows.

Lot 20		ARCHITECT JB 51									
02-09-2025		100% AA									
TATTOO 552		#21420980									
				Ratio				Data			
KM BROKEN BOW 002#+*				Act. BW				77			
SYDGEN BLUEPRINT*				Act. WW				710			
SITZ FLORABELLE FANNY 4735*				1-16-26				1,025			
S ARCHITECT 9501 AAA*19437622				SC				39			
S WHITLOCK 179#*											
S BLOSSOM 7514											
S BLOSSOM 5525											
LEONID OF WYE#				EPD Top%				Data			
CLAYMONT OFWYE UMF 10834*				ADG				0.21 74% 3.53			
CLOVA OF WYE UMF 9607#											
PRIM LASSIE JB 922 AAA 19559911											
FAXTON JB 15											
PRIM LASSIE JB 75											
PRIM LASSIE JB 56											
#Pathfinder, +Embryo Transplant, *Parents Qualified											
	CED	BW	WW	YW	MILK	CEM	CW	RE	FAT	MARB	
EPD	-3	+3.3	+69	+112	+23	+4	+36	+39	+0.27	+28	
Top%	95%	90%	50%	65%	75%	85%	90%	85%	60%	90%	

As of 1-23-26

Registered Black Angus



Enhance JB 59

Enhance JB 59 also has a unique pedigree on the bottom side. Combining the Wye genetic line and SAV Resource against one of the best sires of Jim Barr’s career, this bull is sure to incorporate a different genetic profile to your herd.

Recommend use on larger-framed heifers and cows.

Lot 21		ENHANCE JB 59									
		03-18-2025		100% AA							
TATTOO 59				# 21420975		Ratio		Data			
		SYDGEN EXCEED 3223#*				Act. BW		77			
		SYDGEN ENHANCE#				Act. WW		619			
		SYDGEN RITA 2618				1-16-26		896			
ENHANCE JB 14 AAA 20211097						SC		33.5			
		5L THE REAL DEAL 1687-143B									
		5L LAKOTA 5100-1096									
		5L LAKOTA 687-5100									
		RITO 707 OF IDEAL 3407 7075+									
		SAV RESOURCE 1441#**									
		SAV BLACKCAP 4136*									
QUEEN LOIS JB 016 AAA 19836467											
		BARNARD OF WYE UMF 9303									
		QUEEN LOIS JB 104#									
		QUEEN LOIS 240									
		#Pathfinder, +Embryo Transplant, *Parents Qualified									
		CED	BW	WW	YW	MILK	CEM	CW	RE	FAT	MARB
EPD		-3	+3.3	+69	+112	+23	+4	+36	+39	+.027	+.28
Top%		95%	90%	50%	65%	75%	85%	90%	85%	60%	90%

Commercial Bred Red Angus Heifers

Jake and Edie Stutzman of the Stutzman Ranch backgrounded, bred and ran these heifers on western Nebraska pastures. The heifers were AI'd and our Red U2Q Kennedy 4102M bull ran with them for 45 days. These heifers are available for viewing, about a 25-minute drive away from the bulls at 758 420th Road which is just outside of Beaver Crossing. Call Jake to set up a time to visit: 402-641-0799.

From Jake and Edie:

“The last few years our goal has been to raise and retain heifers who become cows that add length, body and growth to their calves. We believe your cattle should work for you and not the other way around. These bred heifers are ready to go to work. The 15 head on the sale are from the top cut of our home-raised heifers. As much as we wanted to keep them for ourselves, we are excited to share the pride we have in them.”

Lot 22A - Red Tag Group

5 head, AI bred (due March 1)
to Feddes Eastwood 3284
RAAA# 4787522, clean up to
Red U2Q Kennedy 4102M
RAAA# 5212127
Safe to AI



Lot 22B - Blue Tag Group

5 head, AI bred (due March 1)
to Feddes Eastwood 3284
RAAA# 4787522, clean up to
Red U2Q Kennedy 4102M
RAAA# 5212127
Safe to AI



Lot 22C - Orange Tag Group

5 head, exposed to Red U2Q
Kennedy 4102M
RAAA# 5212127 (due
March 1 for 45 days)
Confirmed bred



Red Angus Reference Sires:

5L Up The Limit 1096-54F RAAA# 3948469

Bieber Payday K113 RAAA# 4620475

Haack Stockmarket K20 RAAA# 4697573

Feddes Eastwood 3284 RAAA# 4787522

Red U2Q Kennedy 4102M RAAA# 5212127

Black Angus Reference Sires:

Sterling Pacific 904 AAA# 19444025

Musgrave 316 Exclusive AAA# 18130471

Enhance JB 14 AAA# 20211097

S Architect 9501 AAA# 19437622

SAV Magnum AAA# 20159546

Connealy Craftsman AAA# 820132505

Thank you for considering our bulls,
we hope to see you at the Open House!

REDS RISING

Escalate Your Prosperity

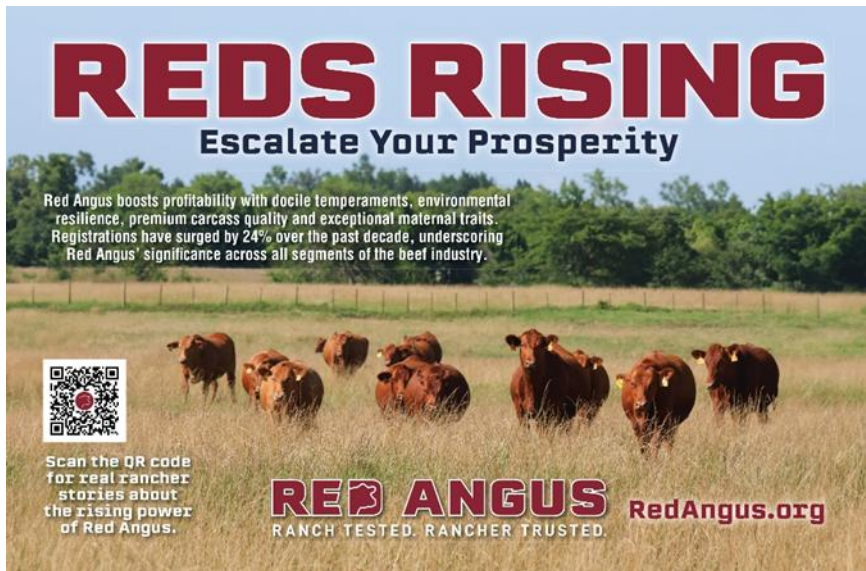
Red Angus boosts profitability with docile temperaments, environmental resilience, premium carcass quality and exceptional maternal traits. Registrations have surged by 24% over the past decade, underscoring Red Angus' significance across all segments of the beef industry.



Scan the QR code
for real rancher
stories about
the rising power
of Red Angus.

RED ANGUS
RANCH TESTED. RANCHER TRUSTED.

RedAngus.org



Jeremy & Asia Haack
1006 Road 15
York, NE 68467