




CENTRAL QUEENSLAND HOMELESSNESS VULNERABILITY SNAPSHOT

NOVEMBER 2025

CQ Zero aims to end homelessness and rough sleeping within Central Queensland through a coordinated, collaborative and person-centred approach.

Between December 2024 and November 2025, a total of 152 individuals and/or families completed the Australian Homelessness Vulnerability Triage Tool (AHVTT).

The data provides valuable information on people's needs, assists in triaging the most vulnerable, and advocating for systems change.

Population	Group Types	Demographics	Homeless History
 <p>130 Adults 22 Children</p>	 <p>Families - 9 Individuals - 78 Youth - 49</p>	 <p>49% First Nations Identifying Female - 39% Male - 59% Other - 2%</p>	<p>2Y 3M Average time homeless</p> <p>27Y Longest time homeless</p>

<p>ROUGH SLEEPING 46% of individuals/families were sleeping rough, meaning they are sleeping on the streets, cars, and parks</p>	<p>TEMPORARY ACCOMMODATION 54% of individuals/families were residing in crisis accommodation or hotels</p>
---	---

Safety


- 59%** experienced violence in the past year
- 44%** thought about hurting themselves
- 38%** do not feel safe where they sleep

Daily Needs

- 24%** do not have access to food and water
- 44%** do not have money to take care of daily needs
- 44%** do not have people they can rely upon or care about them

Health

72% experienced at least one health, mental health or substance use issue



57% have a diagnosed mental health condition

23% have a brain injury or traumatic head injury

41% have serious ongoing health issues

49% regularly use substances like drugs or alcohol


COMMON HEALTH ISSUES


Out of those with a diagnosed mental or physical health condition:

- 55%** have anxiety
- 39%** have clinical depression
- 27%** have PTSD
- 31%** have asthma
- 20%** have heart related diseases/issues
- 13%** have diabetes


Health System Usage

36% were high health service system users






23% were taken in an ambulance to the hospital 5 or more times in the past year



30% went to the emergency department 5 or more times in the past year

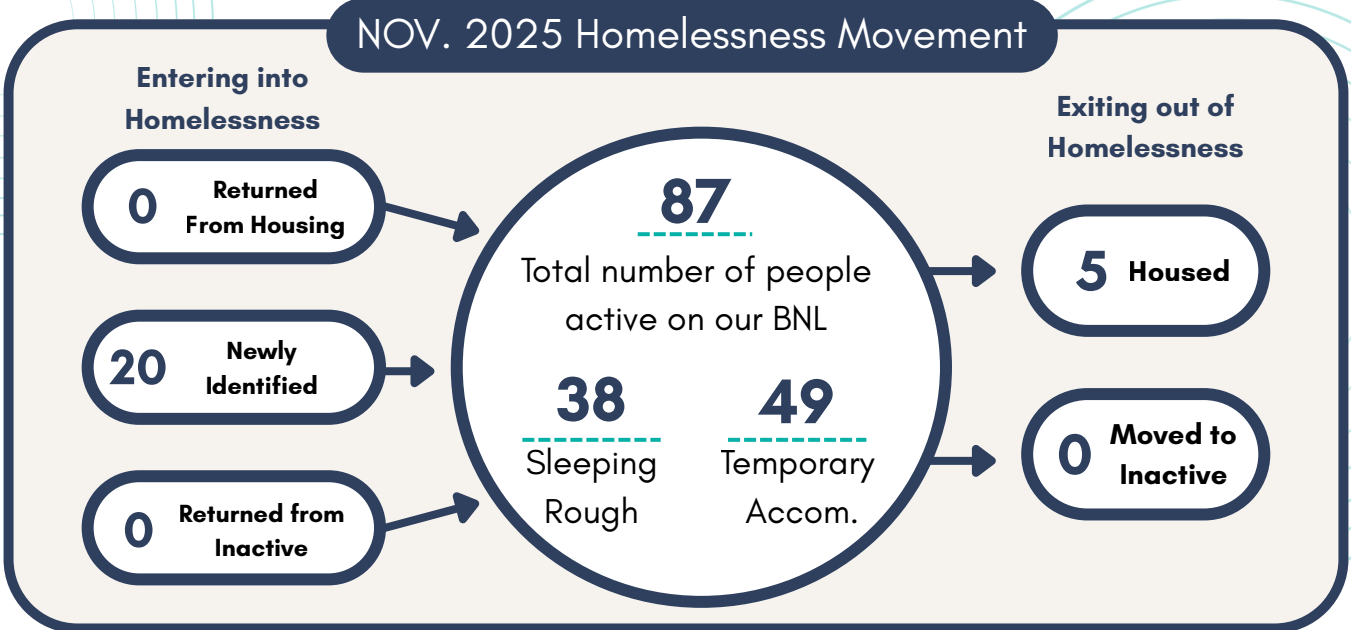


19% were admitted to hospital for 5 or more nights in the past year

CENTRAL QUEENSLAND ROUGH SLEEPER SNAPSHOT NOVEMBER 2025



Population	Group Types	Demographics	Homeless History
<p>130 Adults 22 Children</p>	<p>Families - 9 Individuals - 78 Youth - 49</p>	<p>49% First Nations Identifying Female - 39% Male - 59% Other - 2%</p>	<p>2Y 3M Average time homeless</p> <p>27Y Longest time homeless</p>



Additional Data

40% do not seek medical help when unwell	40% faced discrimination when trying to access services
34% do not have access to a shower when they need it	54% have never had a tenancy or house in their own name
32% have lived in foster care and/or out of home care	72% have a moderate complexity support need

