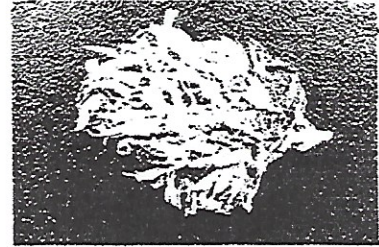


EVIO Labs Medford (pka Kenevir Research)
 540 East Vilas Road, Suite F, Central Point, OR 97502
 541-668-7444 / OLCC 010-1001626980D / www.EVIOLabs.com

Pineberry 3 20 EX



Distributed by:
 waldohempworks.com
 waldohempworks@gmail.com
 920.449.5546
 Must be 18 or older.



Sample ID: ~~XXXXXXXXXX~~

Matrix: Industrial Hemp

METRC Batch #:

Sampling Method/SOP: SOP.T.20.010

Date Sampled: 03/21/19 09:00

Date Accepted: 03/21/19

Harvest/Process Lot ID:

Batch ID:

Batch Size (g):

Unit for Sale:

Harvest/Production Date:

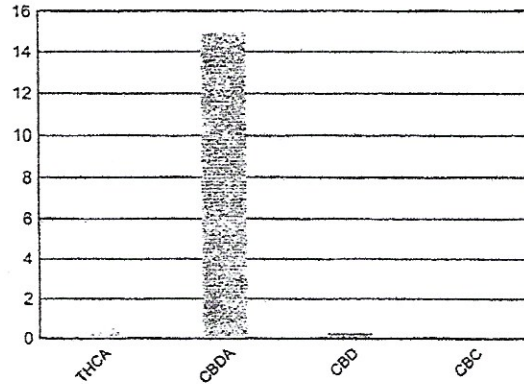
Cannabinoid Analysis

Date/Time Extracted: 03/25/19 14:12
 Date/Time Analyzed: 03/25/19 17:42

Analysis Method/SOP: SOP.T.40.020

Cannabinoids	LOQ(%)	mg/g	% weight
Total THC (THCA*0.877)+∑THC		5.38	0.538
Total CBD (CBDA*0.877)+∑CBD		133	13.3
THCA		6.14	0.614
delta 9-THC	< LOQ	< LOQ	< LOQ
delta 8-THC	< LOQ	< LOQ	< LOQ
CBDA		149	14.9
CBD		2.56	0.256
CBN	< LOQ	< LOQ	< LOQ
CBG	< LOQ	< LOQ	< LOQ
CBC	< LOQ	< LOQ	< LOQ
Sum of tested Cannabinoids		158	15.8

Cannabinoid Profile



Total THC and Total CBD are calculated values and are an Oregon reporting requirement (OAR 333-064-0100). For Cannabinoid analysis, only delta 9-THC, THCA, CBD, CBDA are ORELAP accredited analytes. Cannabinoid values reported for plant matter are dry weight corrected; Oregon Water Activity action level is 0.65Aw and Oregon Moisture Content action level is 15%. Samples above limit will be highlighted RED; FD = Field Duplicate; LOQ = Limit of Quantitation.

Ian Riversong
 Laboratory Director - 3/27/2019