

----- KIDS CORNER -----

THE MAGIC OF BUSY BEES:



Bees are some of the busiest workers you'll see during summer in Illinois! These little insects fly from flower to flower collecting nectar and pollen. While they do that, they help plants grow by spreading pollen, which is called pollination. That's how we get fruits, vegetables, and flowers! Honeybees even make sweet honey from the nectar they collect. Illinois is home to many types of bees—not just honeybees, but also bumblebees and tiny native bees you might not notice unless you look closely. Bees are friendly helpers, not pests. They usually won't sting unless they feel scared, so it's best to watch them without touching. If you see bees buzzing around the park or garden this summer, you're watching nature's gardeners hard at work!

SUMMER FUN

Summer's here, and it's time for fun right outside your door! You don't need to go far to have an awesome summer—your park, sidewalk, and neighborhood are full of cool things to do.

Explore Nature- Look for bugs, birds, and clouds. Start a journal and draw what you see.

Play Together- Jump rope, shoot hoops, or make up a new game with friends. Moving is good for your body and your brain.

Keep Learning- Read a little every day, write a story, or learn one fun fact. Did you know sunflowers follow the sun?

Be Creative- Use chalk to make art on the sidewalk, or build crafts with things you find at home.

Summer is what you make it—and there's so much to do right here in our neighborhood. Let's make it a great one!

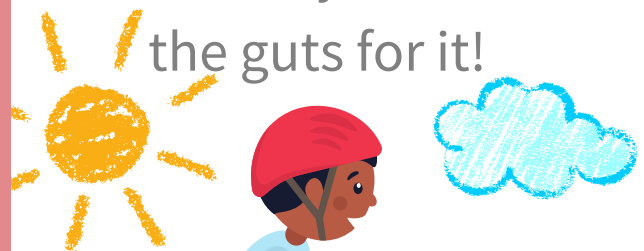
JOKING AROUND

Question

Why don't skeletons like to go to the beach?

Answer

Because they don't have the guts for it!



BIKE SAFETY

- Wear a helmet.
- Ride in safe areas! Avoid roads and parking lots
- Remember to look both ways.
- Avoid going too fast- don't loose control!



SUMMER WORD SEARCH

A	K	D	E	B	B	E	A	C	H	R	L	W	E
R	R	L	M	A	E	R	C	E	C	I	F	K	S
D	O	M	L	L	D	A	A	P	C	W	A	A	M
E	W	C	P	L	A	I	T	S	A	L	E	L	A
F	E	A	B	H	Y	U	H	E	O	E	P	H	S
C	R	M	D	U	L	F	C	O	A	I	F	M	E
T	I	P	N	K	F	A	P	M	C	H	E	A	T
E	F	I	A	M	R	L	H	N	S	N	R	E	O
L	A	N	S	C	E	L	I	G	M	O	M	E	D
I	P	G	A	A	T	C	I	I	N	O	L	E	B
R	F	N	A	N	T	L	M	S	O	R	D	C	S
S	U	L	M	I	U	S	U	M	M	E	R	E	R
C	I	T	P	M	B	I	I	T	B	P	M	L	A
L	E	M	O	N	A	D	E	I	A	L	R	F	I

HEAT
PICNIC
FIREWORK

ICE CREAM
BALL
SAND

SUMMER
POOL
BEACH

BUTTERFLY
LEMONADE
CAMPING

SUMMER CHALLENGE



Make a
safety plan!

Have a family emergency plan. Talk with your family about what to do if there's a fire, a storm, or you get lost. Knowing what steps to take can help keep you safe.

SELF-LOVE CLUB

2nd Friday of the Month
3:00 PM - 4:00 PM
Prairieview Community Room



Come to the next club meeting to practice kindness to ourselves and others.

BALL AND CHALK CHECK-OUT

Come visit us at the Prairieview Office this summer to borrow a ball or grab some chalk for some summer fun!

