

&KUROLOK™  
ZIPPED-EDGE BLACKOUT





# ZIPPED-EDGE BLACKOUT

With the ability to cover an incredible 24m<sup>2</sup> in a single blind, KuroLok is an outstanding performer for your shading requirements.

## OVERVIEW

- Zipped-edge fabric retention
- 12 year warranty
- Sizes up to 4m wide, 6m drop, 24m<sup>2</sup>
- Includes headbox and slim side channels

## SYSTEM DETAILS

KuroLok features extruded aluminium headbox and slim side channels. The blind fabric is locked into the side channels using zip technology. The aluminium profiles are powder coated in white or black as standard, or any other RAL colour to order.

Universal profiles allow the frame to be fixed through the face, sides or top as required and all fixings are completely concealed.

## USES & APPLICATIONS

Zipped-edge fabric retention removes the challenge, and associated maintenance issues, of fabric coming out of the side channels on traditional blackout and cassetted blinds.

The fabric being fully retained down both sides also allows for blinds to be installed at up to 30° off the vertical and still function perfectly; an ideal solution for sloping glazing.

The headbox and side channels can also be recessed into walls or ceilings for the ultimate built-in look. KuroLok blinds are simple and fast to install and are robustly built to provide a maintenance-free blind. Using the same controls as our Helios system, KuroLok can be motorised or operated manually via chain or crank handle



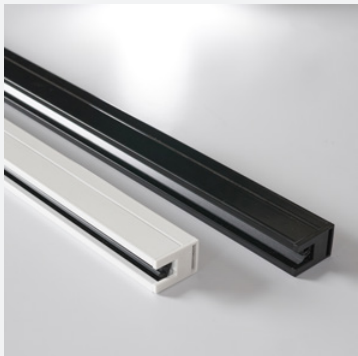




# ROLLER SHADE FEATURES

MAX SIZE

24m<sup>2</sup>



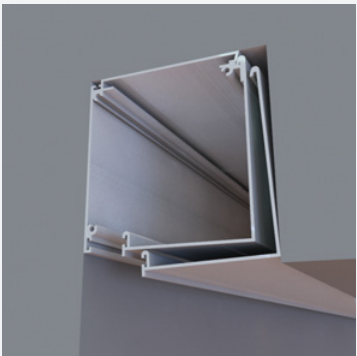
**SIDE CHANNELS WITH FABRIC ZIP**

- Slim 35mm wide channel
- Zipped edge fabric retention
- Wider 56mm channel also available



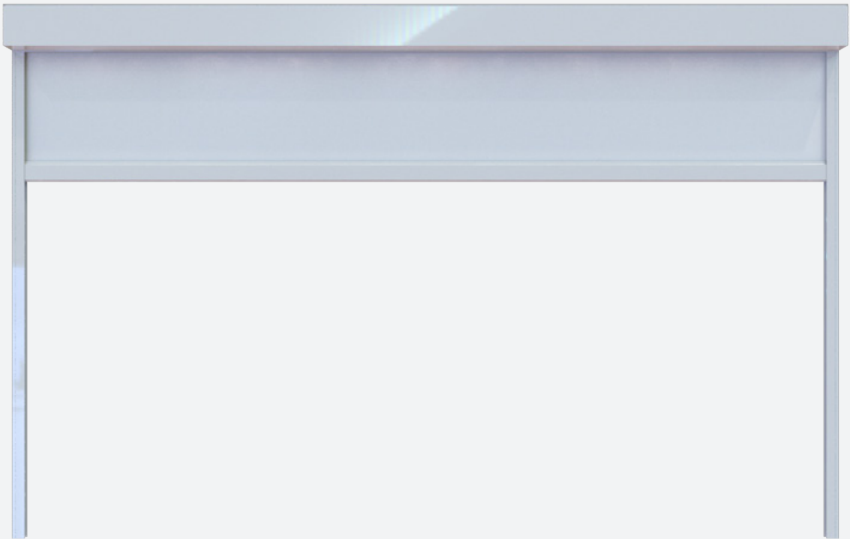
**HEADBOX TO SUIT BLIND SIZE**

- 100mm (H) X 92.5mm (D) or 125mm (H) x 117.5mm (D)
- Connects to side channels with sturdy steel legs
- Strong ‘Goalpost’ frame for fast install



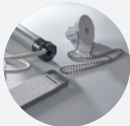
**FASCIA REMOVABLE WITHIN 100MM OR 125MM**

- Enables fitting within slim recess
- Ideal for install within ceiling pocket
- Blinds can be accessed for maintenance



## CONTROL OPTIONS

- Metal chain
- Crank-handle with reduction gear
- 240V motorised
- Low voltage or battery motorised



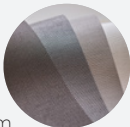
## MOTORISATION CONTROLS

- Hardwired Switch
- Radio remote control
- Digital and IP communication
- Integration and control systems



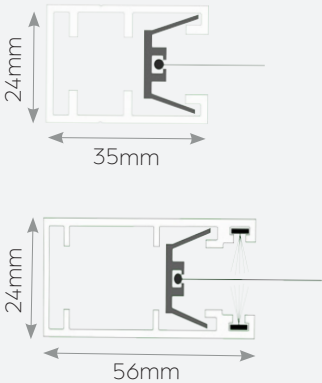
## FABRIC OPTIONS

- Blackout fabrics for room darkening
- Dimout fabrics for light filtering and privacy
- Sunscreen fabrics for glare control with views out

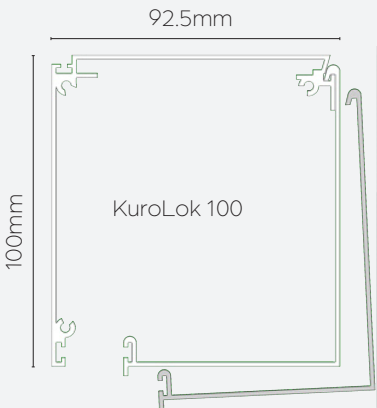
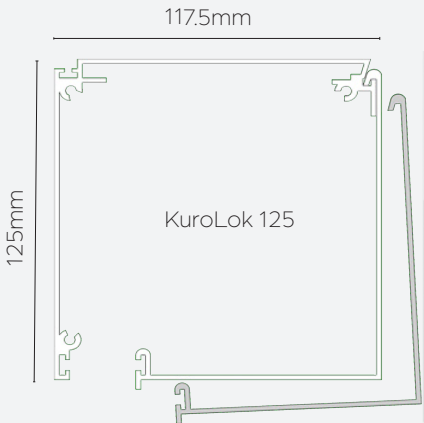


## SYSTEM SPECIFICATION

### FABRIC RETENTION SIDE CHANNELS



### KUROLOK HEADBOX DIMENSIONS



# SELECT YOUR SYSTEM

See Systems Overview brochure for more information

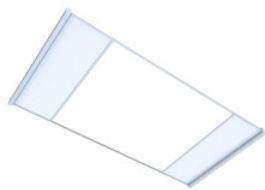
ROOFLIGHT SYSTEMS

SQUARE AREA

BLACKOUT SYSTEMS

→

18m<sup>2</sup>



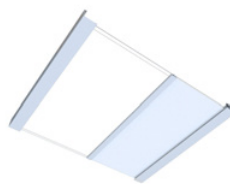
&KUROLOK™  
TWIN RL

9m<sup>2</sup>



&KUROLOK™  
RL

4m<sup>2</sup>



&HELIOS™  
RL

24m<sup>2</sup>



&KUROLOK™

BLACKOUT SYSTEMS

ROLLER SHADES

LARGE

MEDIUM

SMALL

→

14m<sup>2</sup>



&KURO™

16m<sup>2</sup>



&HELIOS™

6m<sup>2</sup>



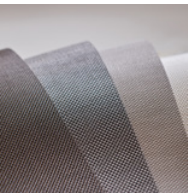
&SIRIOS™

3m<sup>2</sup>



&ORBIS™

## SELECT YOUR FABRIC



VIEW OUR RANGE  
OF FABRICS ONLINE

## FIND OUT MORE

FOR MORE SYSTEM INFO AND  
AUTOMATION OPTIONS VISIT OUR WEBSITE

UMBRA&



In line with our policy of continuous product development, we reserve the right to alter specifications without notice.

0203 633 5664 (London)  
01727 613202 (Hertfordshire)  
enquiries@londonelectricblinds.co.uk  
londonelectricblinds.co.uk