

# KALA AZAR - 2018



## REVIEW & PLANNING

Dr V P Singh,  
Additional Director (Malaria &VBD),  
SPO & Nodal officer for Kala azar,  
Lucknow, Uttar Pradesh

# Kala Azar endemic districts- Uttar Pradesh

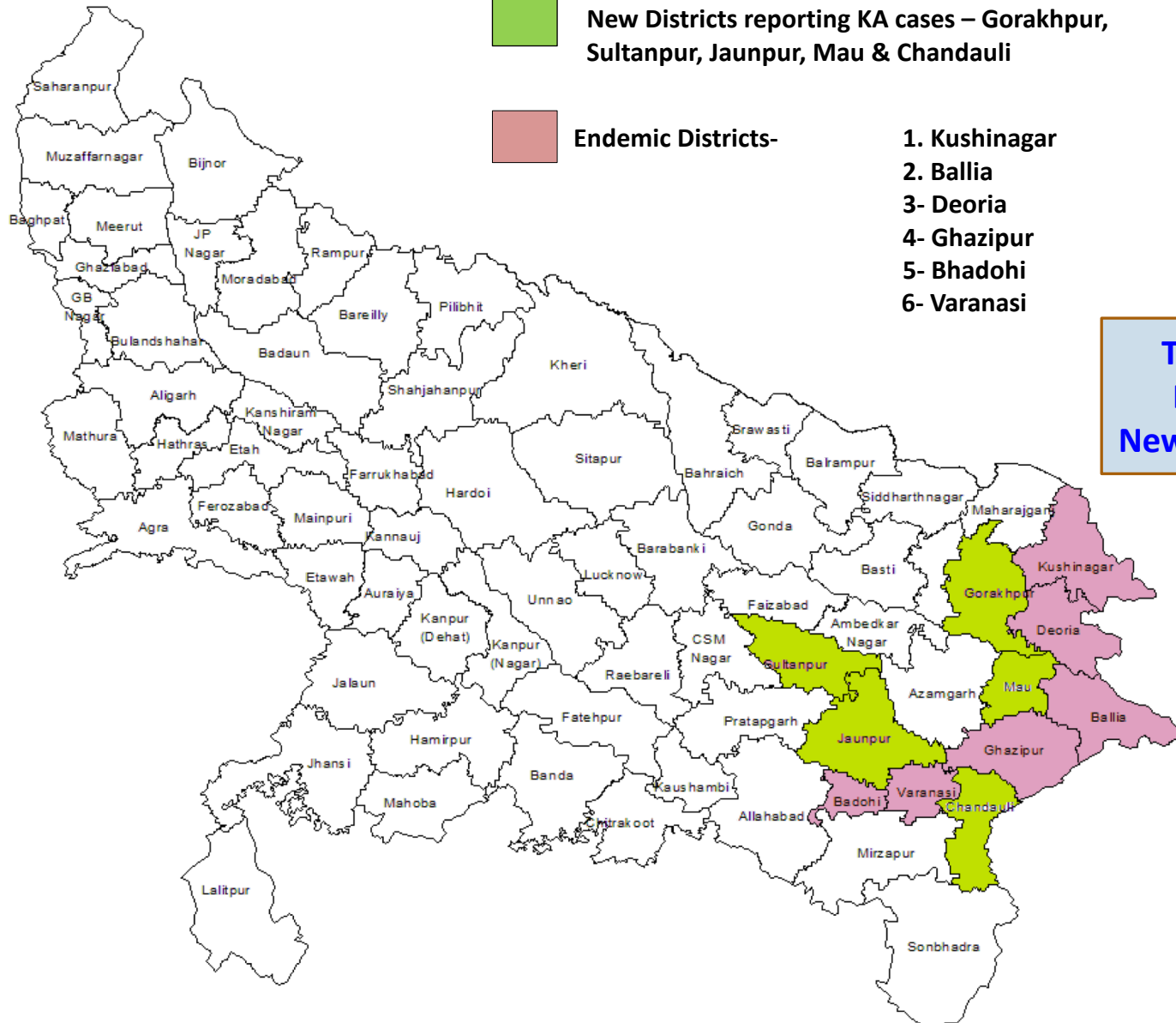


New Districts reporting KA cases – Gorakhpur, Sultanpur, Jaunpur, Mau & Chandauli



Endemic Districts-

1. Kushinagar
2. Ballia
- 3- Deoria
- 4- Ghazipur
- 5- Bhadohi
- 6- Varanasi



Total no. of districts- 75  
Endemic districts - 6  
New districts reporting KA - 5

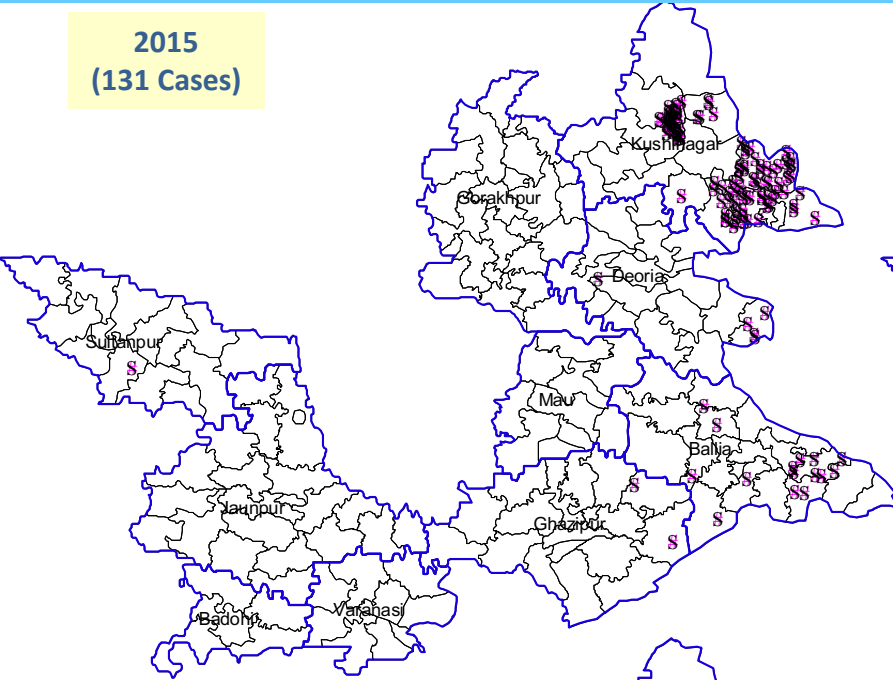


# Districts with reported Kala-azar Cases and Deaths 2001-17

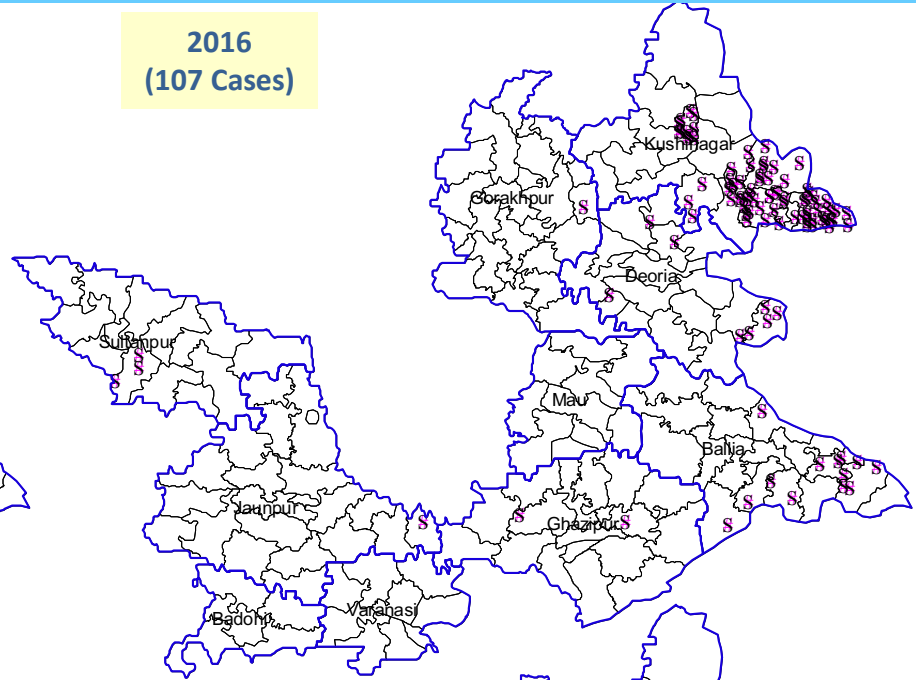
District	2007 Cases	2007 Deaths	2008 Cases	2008 Deaths	2009 Cases	2009 Deaths	2010 Cases	2010 Deaths	2011 Cases	2011 Deaths	2012 Cases	2012 Deaths	2013 Cases	2013 Deaths	2014 Cases	2014 Deaths	2015 Cases	2015 Deaths	2016 Cases	2016 Deaths	2017 Cases	2017 Deaths
Varanasi	22	1	9	0	5	0	4	0	2	0	0	0	0	0	0	0	0	0	0	0	0	0
Ballia	15	0	5	0	6	1	3	0	2	1	0	0	0	0	0	0	15	0	13	0	22	0
Deoria	2	0	3	0	1	0	1	0	0	0	2	0	2	0	0	0	5	0	8	0	22	0
Gorakhpur	0	0	0	0	0	0	0	0	0	0	0	0	0	0	0	0	0	0	1	0	0	0
Ghazipur	9	0	0	0	0	0	0	0	2	0	3	0	2	0	0	0	2	0	2	0	3	0
Kushinagar	18	0	9	0	5	0	4	0	0	0	0	0	7	1	11	0	108	0	79	0	57	0
Rampur	0	0	0	0	0	0	0	0	0	0	0	0	0	0	0	0	0	0	0	0	0	0
Gonda	3	0	0	0	0	0	0	0	0	0	0	0	0	0	0	0	0	0	0	0	0	0
Jaunpur	0	0	0	0	0	0	0	0	0	0	0	0	0	0	0	0	0	0	1	0	0	0
St. Ravidas Nagar / Bhdohi	0	0	0	0	0	0	0	0	5	0	0	0	0	0	0	0	0	0	0	0	0	0
Sultanpur	0	0	0	0	0	0	0	0	0	0	0	0	0	0	0	0	1	0	3	0	0	0

# Kala Azar Cases

2015  
(131 Cases)

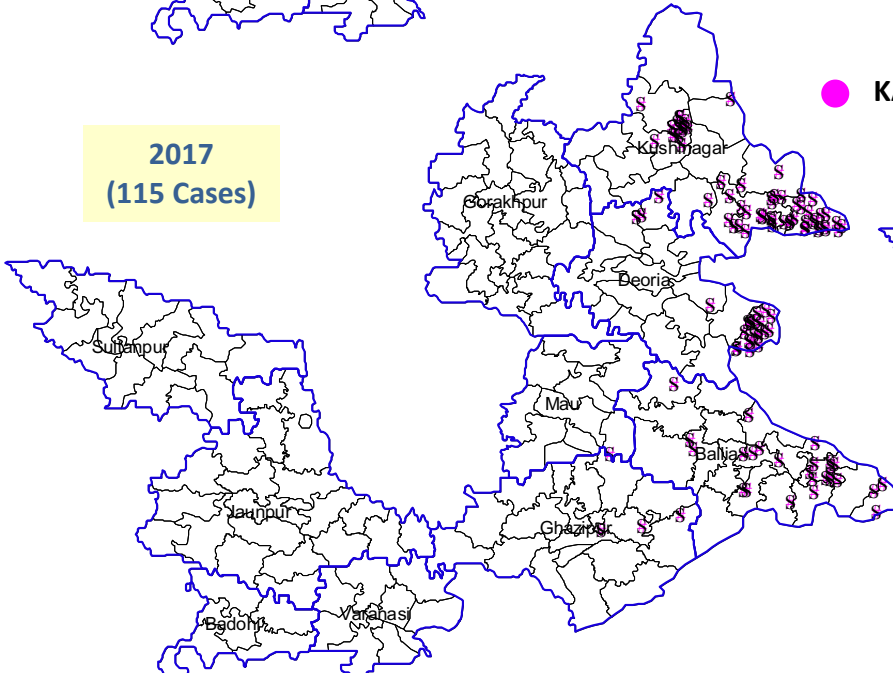


2016  
(107 Cases)

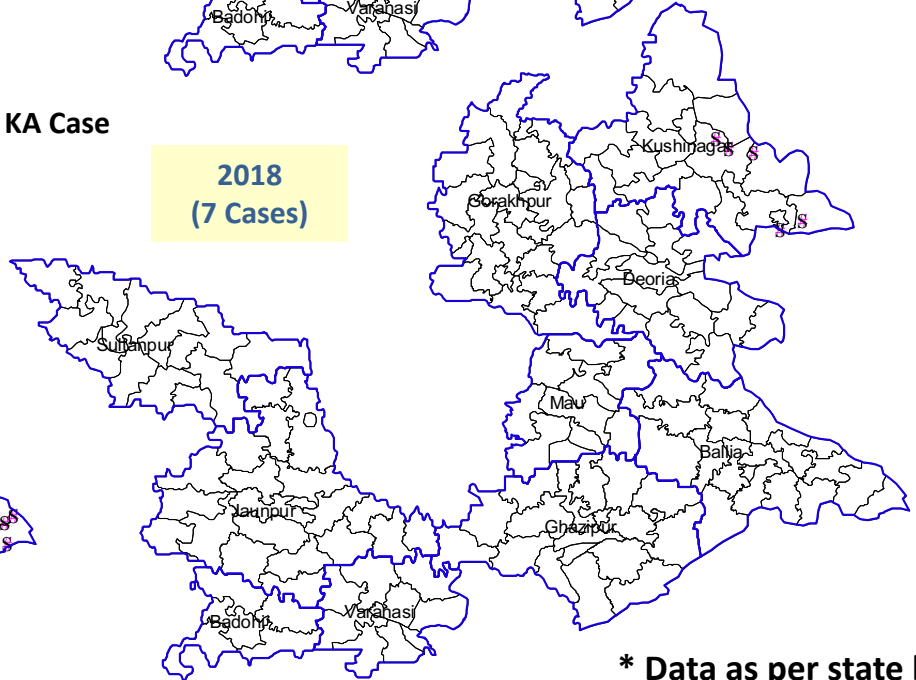


● KA Case

2017  
(115 Cases)



2018  
(7 Cases)



\* Data as per state line list

## CLASSIFICATION OF ENDEMIC AREA BLOCKS

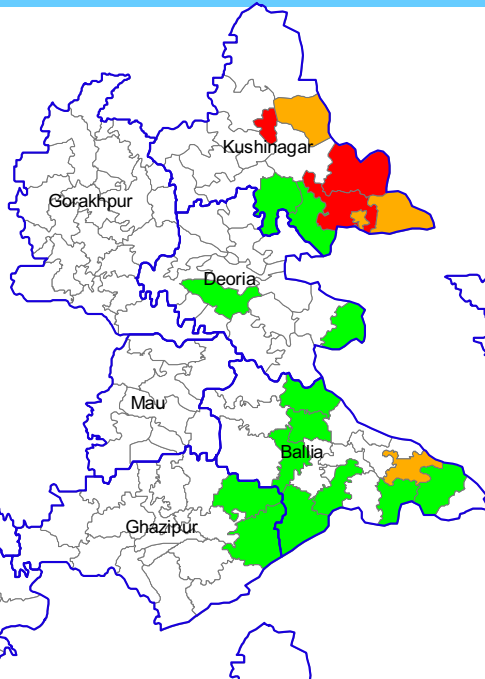
KA endemic areas have been stratified into 4 categories based on annual incidence.

- Category 1: **Blocks above elimination threshold** (annual incidence of more than or equal to 1 case per ten thousand population).
- Category 2: Blocks with **borderline endemicity** (Annual KA incidence varying 0.8 to <1).
- Category 3: **Fluctuations**- increasing or decreasing trend of disease either year to year or in a gap of few years.
- Category 4: **Silent blocks**- areas reporting nil cases annually. Post-elimination sustenance (maintenance phase) These include areas of zero cases for at least two consecutive years.

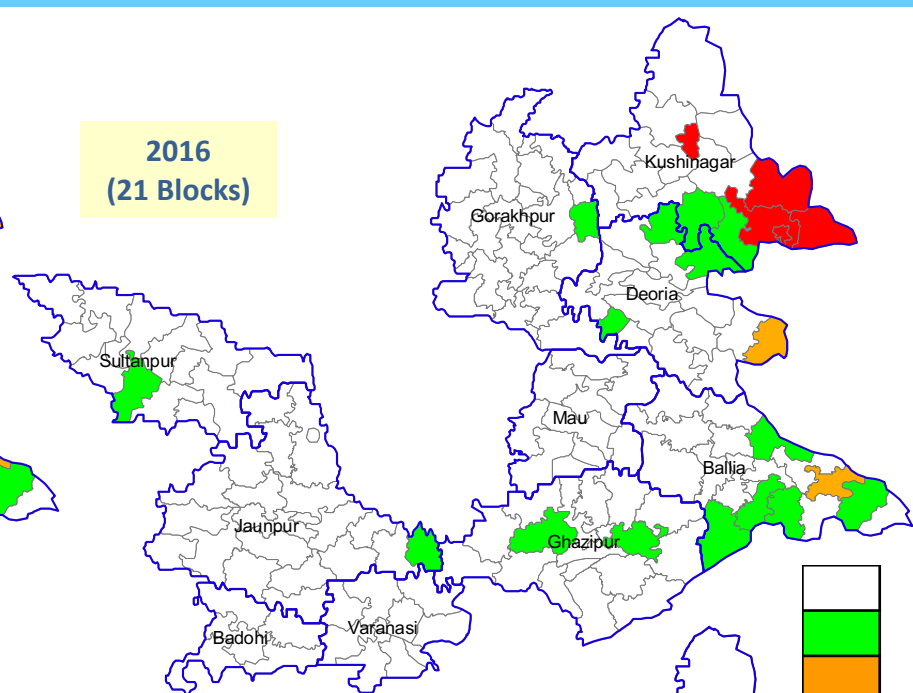
Year	Total No. of Vlcases	No of Districts with blocks >1 case /10,000 Pop.	Category -1 Blocks >1 case /10,000 Pop	Category -2 Blocks 0.8-<1 case / 10,000 pop	Category -3 Fluctuating from year to year	Category—4 Silent Blocks- Nil status in last one year
2016	107	0	0	2 1-Tamkuhi (Kushinagar ) 2-Taryasujan ( Kushinagar )	20	19
2017	115	0	0	1 1-Bankata (Deoria), 2-Taryasujan (Kushinagar)	23	16

# Kala Azar endemic blocks

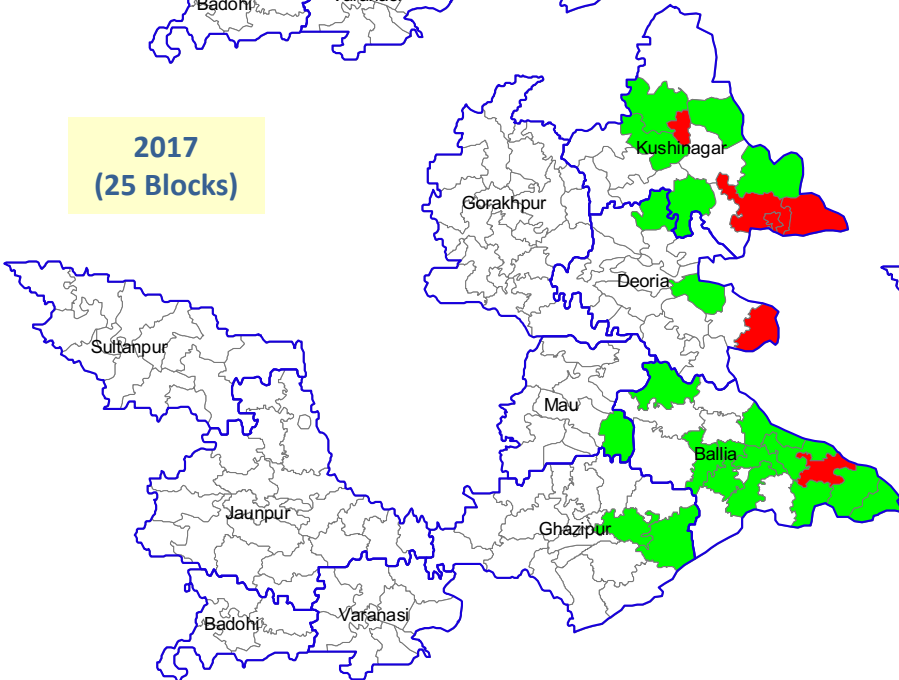
2015  
(20 Blocks)



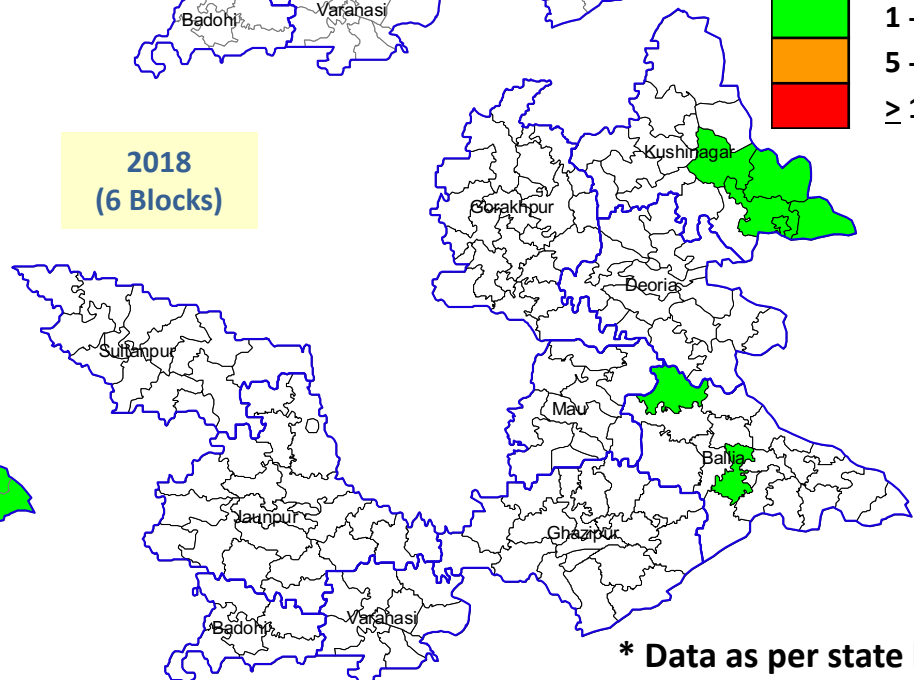
2016  
(21 Blocks)



2017  
(25 Blocks)



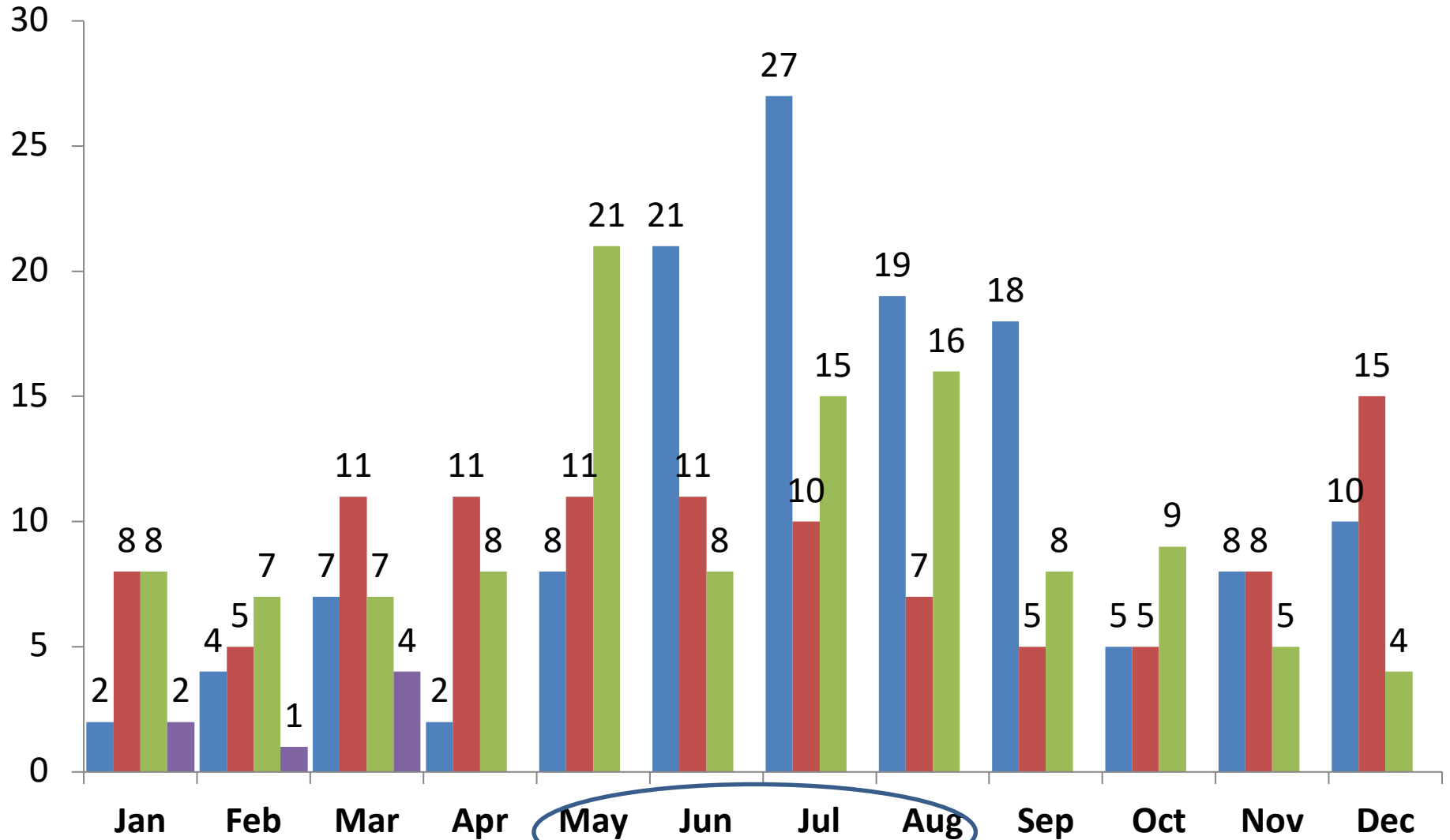
2018  
(6 Blocks)



\* Data as per state line list

# Month wise cases

■ 2015 ■ 2016 ■ 2017 ■ 2018

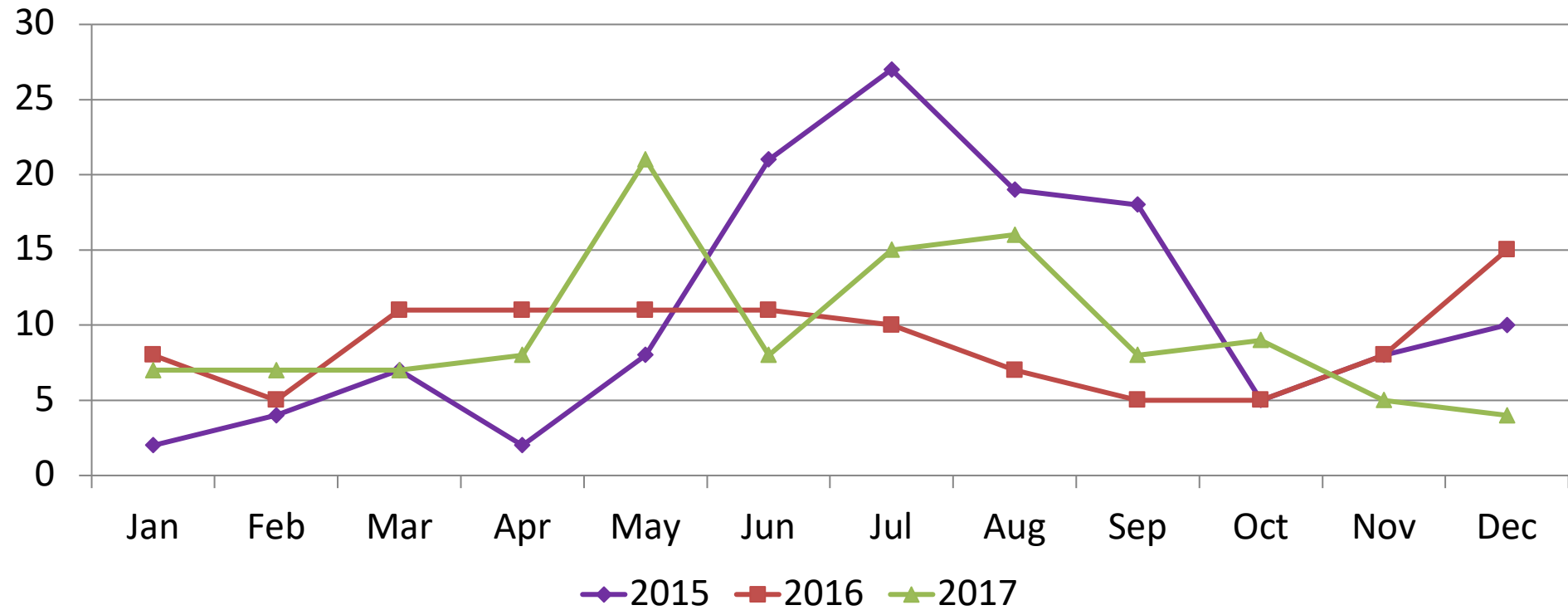




# Month wise cases and incidence-2017

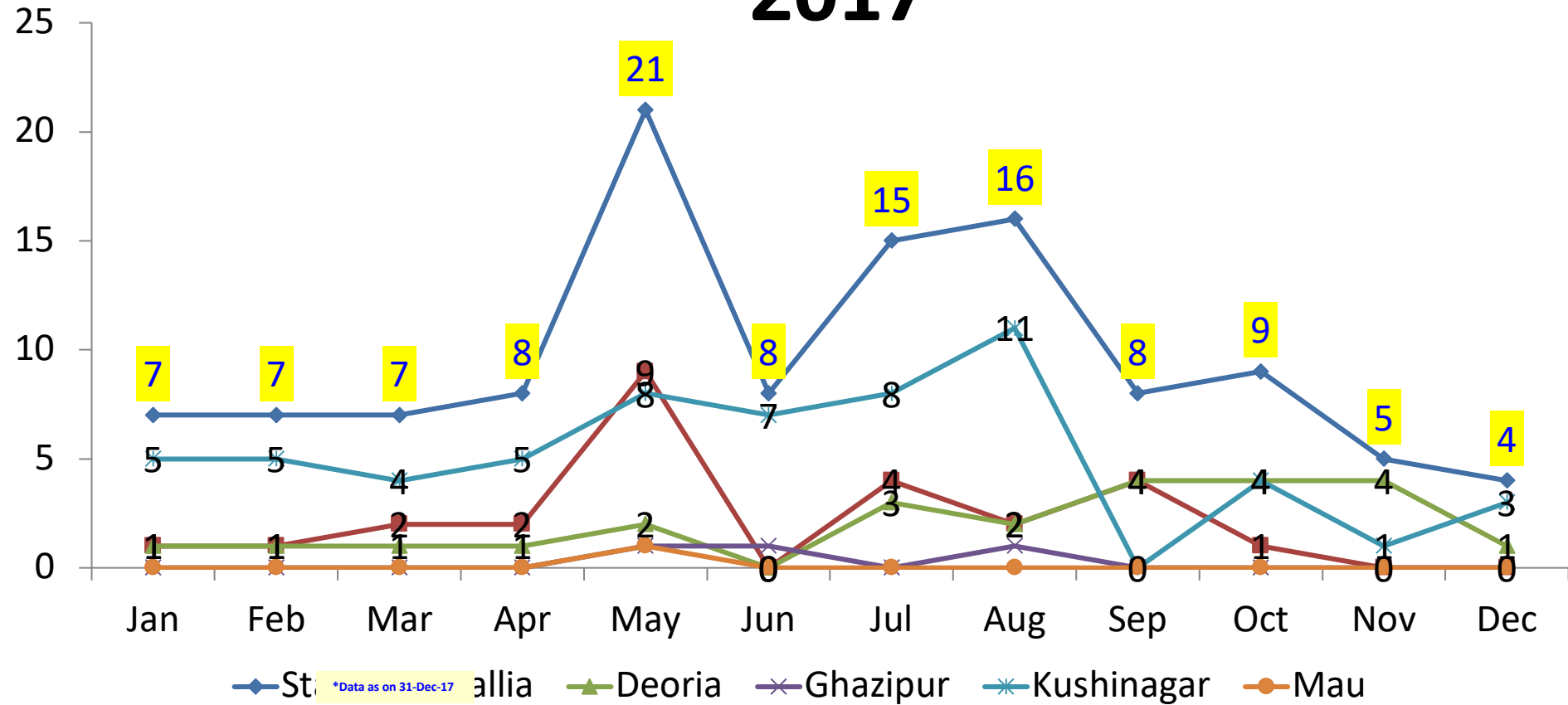
S. No.	Districts	Name of Block/ PHC	Block Population	Jan		Feb		Mar		Apr		May		Jun		Jul		Aug		Sep		Oct		Nov		Dec		TOTAL		Incidence
				Cases	Death	Cases	Death	Cases	Death	Cases	Death	Cases	Death	Cases	Death	Cases	Death	Cases	Death	Cases	Death	Cases	Death	Cases	Death	Cases	Death	Cases	Death	
1	Ballia	BAIRIA	194617																1								1	0	0.05	
		BANSDIH	178441								1				1												2	0	0.11	
		BELHARI	142842						1								1										2	0	0.14	
		BERUARWARI	138463								1				1				1								3	0	0.22	
		CHILKAHAR	200017												1	1											2	0	0.10	
		DUBHAR	203397				1		1																		2	0	0.10	
		GARWAR	186352	1																							1	0	0.05	
		MANIYAR	151877								1																1	0	0.07	
		MURLI CHHAPRA	160272																2								2	0	0.12	
		REWATI	169292			1		1			6				1						1						10	0	0.59	
		SIYAR	259748	1																							1	0	0.04	
		<b>Total</b>	<b>1985318</b>	<b>2</b>	<b>0</b>	<b>1</b>	<b>0</b>	<b>2</b>	<b>0</b>	<b>2</b>	<b>0</b>	<b>9</b>	<b>0</b>	<b>0</b>	<b>0</b>	<b>4</b>	<b>0</b>	<b>2</b>	<b>0</b>	<b>4</b>	<b>0</b>	<b>1</b>	<b>0</b>	<b>0</b>	<b>0</b>	<b>0</b>	<b>27</b>	<b>0</b>	<b>0.14</b>	
2	Deoria	<b>BANKATA</b>	201563	1							1				3		2		4	4		4		1		20	0	<b>0.99</b>		
		BHATNI	182873								1																1	0	0.05	
		DESAHI DEORIA	142582			1		1		1																	3	0	0.21	
		<b>Total</b>	<b>527018</b>	<b>1</b>	<b>0</b>	<b>1</b>	<b>0</b>	<b>1</b>	<b>0</b>	<b>1</b>	<b>0</b>	<b>2</b>	<b>0</b>	<b>0</b>	<b>0</b>	<b>3</b>	<b>0</b>	<b>2</b>	<b>0</b>	<b>4</b>	<b>0</b>	<b>4</b>	<b>0</b>	<b>4</b>	<b>0</b>	<b>1</b>	<b>0</b>	<b>24</b>	<b>0</b>	<b>0.46</b>
3	Ghazipur	GONDAUR	213167								1																1	0	0.05	
		MOHAMMADABAD	247065											1				1									2	0	0.08	
		<b>Total</b>	<b>460232</b>	<b>0</b>	<b>0</b>	<b>0</b>	<b>0</b>	<b>0</b>	<b>0</b>	<b>0</b>	<b>0</b>	<b>1</b>	<b>0</b>	<b>1</b>	<b>0</b>	<b>0</b>	<b>0</b>	<b>1</b>	<b>0</b>	<b>0</b>	<b>0</b>	<b>0</b>	<b>0</b>	<b>0</b>	<b>0</b>	<b>0</b>	<b>3</b>	<b>0</b>	<b>0.07</b>	
4	Kushinagar	DUDHAI	338467					1										1			1						3	0	0.09	
		KASIA	211446			1																					1	0	0.05	
		NEBUA NAURANGIA	254826															1									1	0	0.04	
		RAMKOLA	273229								1																1	0	0.04	
		TAMKUHI	309365	2		1		3			2				1	2					1						12	0	0.39	
		TARYASUJAN	324507	2					4	2	4	5	5	5	5					2		1		3			28	0	0.86	
		URBAN PADRAUNA	440836	1		2			1	3	3	2	2														14	0	0.32	
		VISHNUPURA	287854			1																					1	0	0.03	
		<b>Total</b>	<b>2440530</b>	<b>5</b>	<b>0</b>	<b>5</b>	<b>0</b>	<b>4</b>	<b>0</b>	<b>5</b>	<b>0</b>	<b>8</b>	<b>0</b>	<b>7</b>	<b>0</b>	<b>8</b>	<b>0</b>	<b>11</b>	<b>0</b>	<b>0</b>	<b>0</b>	<b>4</b>	<b>0</b>	<b>1</b>	<b>0</b>	<b>3</b>	<b>0</b>	<b>61</b>	<b>0</b>	<b>0.25</b>
5	Mau	RATANPURA	211479								1																1	0	0.05	
		<b>Total</b>	<b>211479</b>	<b>0</b>	<b>0</b>	<b>0</b>	<b>0</b>	<b>0</b>	<b>0</b>	<b>0</b>	<b>0</b>	<b>1</b>	<b>0</b>	<b>0</b>	<b>0</b>	<b>0</b>	<b>0</b>	<b>0</b>	<b>0</b>	<b>0</b>	<b>0</b>	<b>0</b>	<b>0</b>	<b>0</b>	<b>0</b>	<b>0</b>	<b>1</b>	<b>0</b>	<b>0.05</b>	
<b>Grand Total</b>			<b>5413098</b>	<b>8</b>	<b>0</b>	<b>7</b>	<b>0</b>	<b>7</b>	<b>0</b>	<b>8</b>	<b>0</b>	<b>21</b>	<b>0</b>	<b>8</b>	<b>0</b>	<b>15</b>	<b>0</b>	<b>16</b>	<b>0</b>	<b>8</b>	<b>0</b>	<b>9</b>	<b>0</b>	<b>5</b>	<b>0</b>	<b>4</b>	<b>0</b>	<b>116</b>	<b>0</b>	<b>0.21</b>

# Month wise trend of reported cases – UP 2015, 2016, 2017



\*Data as on 31-Dec-17

# Endemic Districts trend of reported cases – 2017



# Month wise cases and incidence-2018

S. No.	Districts	Name of Block/ PHC	Block Population	Jan		Feb		Mar		Apr		May		Jun		Jul		Aug		Sep		Oct		Nov		Dec		TOTAL		Incidence	
				Cases	Death	Cases	Death	Cases	Death	Cases	Death	Cases	Death	Cases	Death	Cases	Death	Cases	Death	Cases	Death	Cases	Death	Cases	Death	Cases	Death	Cases	Death		
1	Kushinagar	KUBERNATH	387092	2																									2	0	0.05
		DUDHAHI	345344				1																						1	0	0.03
		TAMKUHI	315651			1																							1	0	0.03
		TARYASUJAN	331101				1																						1	0	0.03
	Ballia	Ratsar/Gadwar	165109	1																								1	0	0.03	
		Siar	268151				1																					1	0	0.03	
		<b>Total</b>	<b>1379188</b>	<b>2</b>	<b>0</b>	<b>1</b>	<b>0</b>	<b>2</b>	<b>0</b>	<b>0</b>	<b>0</b>	<b>0</b>	<b>0</b>	<b>0</b>	<b>0</b>	<b>0</b>	<b>0</b>	<b>0</b>	<b>0</b>	<b>0</b>	<b>0</b>	<b>0</b>	<b>0</b>	<b>0</b>	<b>0</b>	<b>0</b>	<b>0</b>	<b>7</b>	<b>0</b>	<b>0.04</b>	
<b>Grand Total</b>			<b>1379188</b>	<b>2</b>	<b>0</b>	<b>1</b>	<b>0</b>	<b>2</b>	<b>0</b>	<b>0</b>	<b>0</b>	<b>0</b>	<b>0</b>	<b>0</b>	<b>0</b>	<b>0</b>	<b>0</b>	<b>0</b>	<b>0</b>	<b>0</b>	<b>0</b>	<b>0</b>	<b>0</b>	<b>0</b>	<b>0</b>	<b>0</b>	<b>7</b>	<b>0</b>	<b>0.04</b>		

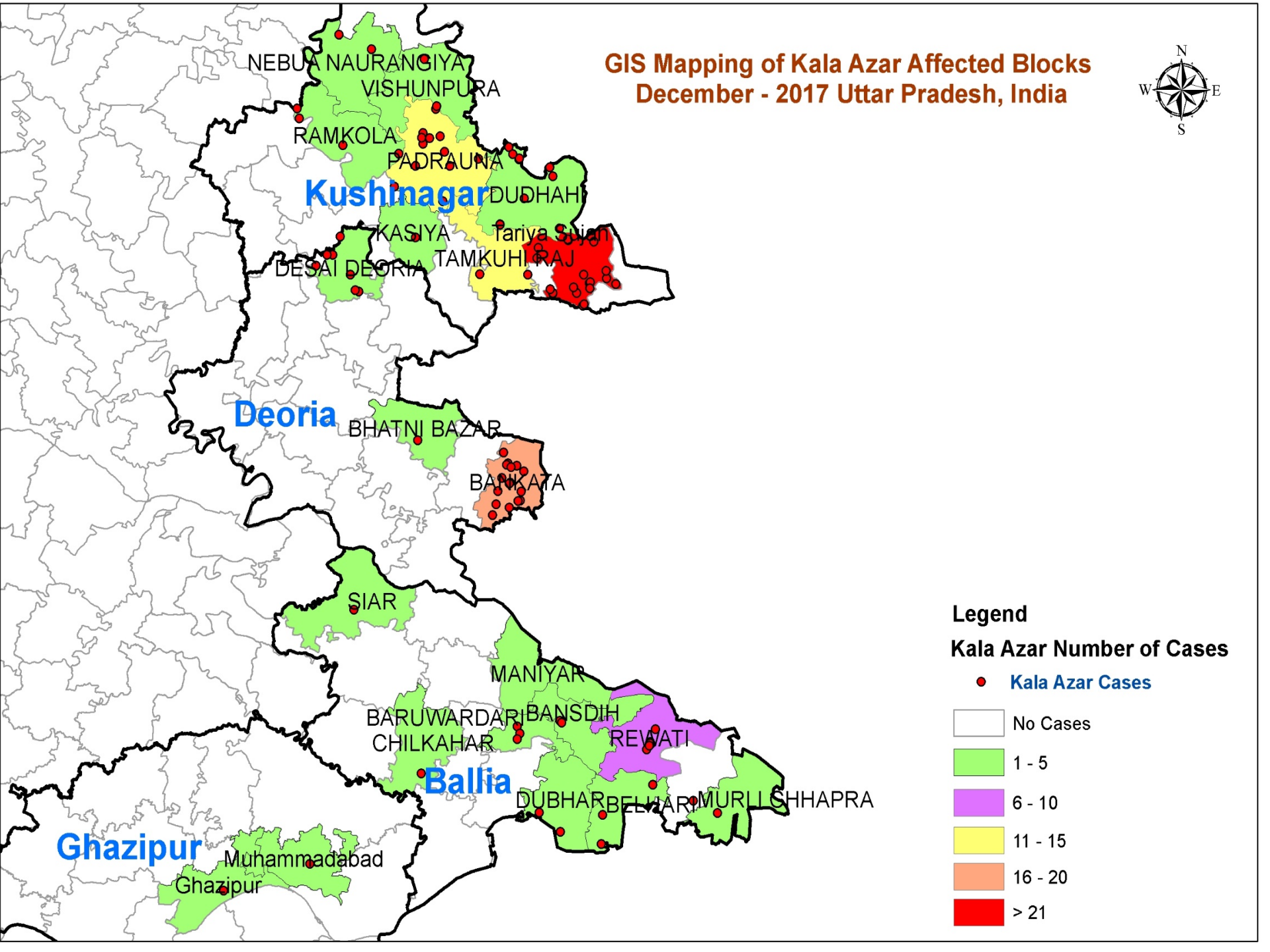
# Block wise Incidence of Kalaazar 2017

S.N.	District	Total Blocks	Affected Blocks 2011-2017	S.N.	Name of Block	2011	2012	2013	2014	2015	2016	2017	Census Population	Incidence 2017
1	Kushinagar	15	9	1	Dudhai	0	0	6	11	33	11	3	338467	0.09
				2	Fazilnagar	0	0	0	0	2	2	0		
				3	Kasia	2	0	0	0	1	3	1	211446	0.05
				4	Nebua Naurangia	0	0	0	0	0	0	1	254826	0.04
				5	Ramkola	0	0	0	0	0	0	1	273229	0.04
				6	Tamkuhi	0	0	1	0	25	23	12	309365	0.39
				7	Taryasujan	0	0	0	0	6	29	28	324507	0.86
				8	Urban Padrauna	0	0	0	0	35	11	14	440836	0.32
				9	Vishnupura	0	0	0	0	6	0	1	287854	0.03
					<b>Total</b>	<b>2</b>	<b>0</b>	<b>7</b>	<b>11</b>	<b>108</b>	<b>79</b>	<b>61</b>	<b>2440530</b>	<b>0.25</b>
2	Ballia	18	14	1	Bairia	0	0	0	0	1	3	1	194617	0.05
				2	Bansdih	0	0	0	0	0	0	2	178441	0.11
				3	Belhari	0	0	0	0	2	0	2	142842	0.14
				4	Beruarwari	0	0	0	0	0	0	3	138463	0.22
				5	Chilkahar	0	0	0	0	1	0	2	200017	0.10
				6	Dubhar	1	0	0	0	1	1	2	203397	0.10
				7	Hanumanganj	0	0	0	0	0	2	0		
				8	Maniyar	0	0	0	0	0	1	1	151877	0.07
				9	Murli Chhapra	1	0	0	0	0	0	2	160272	0.12
				10	Nawannagar	0	0	0	0	1	0	0		
				11	Pandah	0	0	0	0	1	0	0		
				12	Rewati	0	0	0	0	7	5	10	169292	0.59
				13	Siyar	0	0	0	0	0	0	1	259748	0.04
				14	Sohaon	0	0	0	0	1	1	0		
					<b>Total</b>	<b>2</b>	<b>0</b>	<b>0</b>	<b>0</b>	<b>15</b>	<b>13</b>	<b>26</b>	<b>1798966</b>	<b>0.14</b>
3	Deoria	17	6	1	Bankata	1	2	2	0	4	5	20	201563	0.99
				2	Bhaluani	0	0	0	0	1	0	0		
				3	Bhatni	0	0	0	0	0	0	1	182873	0.05
				4	Desahi Deoria	0	0	0	0	0	1	3	142582	0.21
				5	Mahen	0	0	0	0	0	1	0		
				6	Pathar Deva	0	0	0	0	0	1	0		
					<b>Total</b>	<b>1</b>	<b>2</b>	<b>2</b>	<b>0</b>	<b>5</b>	<b>8</b>	<b>24</b>	<b>527018</b>	<b>0.46</b>

# Block wise Incidence of Kalaazar 2017

S.N.	District	Total Blocks	Affected Blocks 2011-2017	S.N.	Name of Block	2011	2012	2013	2014	2015	2016	2017	Census Population	Incidence 2017
4	Ghazipur	17	4	1	Barachawar	0	3	0	0	1	0	0		
				2	Gondaur	3	0	2	0	1	0	1	213167	0.05
				3	Manihari	0	0	0	0	0	1	0		
				4	Mohammadabad	0	0	0	0	0	1	2	247065	0.08
					<b>Total</b>	<b>3</b>	<b>3</b>	<b>2</b>	<b>0</b>	<b>2</b>	<b>2</b>	<b>3</b>	<b>460232</b>	<b>0.07</b>
5	Gorakhpur	20	1	1	Sardar Nagar	0	0	0	0	0	1	0		
					<b>Total</b>	<b>0</b>	<b>0</b>	<b>0</b>	<b>0</b>	<b>0</b>	<b>1</b>	<b>0</b>	<b>0</b>	
6	Jaunpur	22	1	1	Dobhi	0	0	0	0	0	1	0		
					<b>Total</b>	<b>0</b>	<b>0</b>	<b>0</b>	<b>0</b>	<b>0</b>	<b>1</b>	<b>0</b>	<b>0</b>	
7	Mau	10	1	1	Ratanpura	0	0	0	0	0	0	1	211479	0.05
					<b>Total</b>	<b>1</b>	<b>0</b>	<b>0</b>	<b>0</b>	<b>0</b>	<b>0</b>	<b>1</b>	<b>211479</b>	<b>0.05</b>
8	Sant Ravidas Nagar	5	1	1	Bhadoi	1	0	0	0	0	0	0		
					<b>Total</b>	<b>1</b>	<b>0</b>	<b>0</b>	<b>0</b>	<b>0</b>	<b>0</b>	<b>0</b>	<b>0</b>	
9	Sultanpur	13	1	1	Bhadaiyan	0	0	0	0	1	3	0		
					<b>Total</b>	<b>0</b>	<b>0</b>	<b>0</b>	<b>0</b>	<b>1</b>	<b>3</b>	<b>0</b>	<b>0</b>	
10	Varanasi	9	2	1	Cholapur	1	0	0	0	0	0	0		
				2	Harhua	1	0	0	0	0	0	0		
					<b>Total</b>	<b>2</b>	<b>0</b>	<b>0</b>	<b>0</b>	<b>0</b>	<b>0</b>	<b>0</b>	<b>0</b>	
	<b>TOTAL</b>	<b>146</b>	<b>40</b>		<b>Total for State</b>	<b>11</b>	<b>5</b>	<b>11</b>	<b>11</b>	<b>131</b>	<b>107</b>	<b>115</b>	<b>5226746</b>	<b>0.22</b>

# GIS Mapping of Kala Azar Affected Blocks December - 2017 Uttar Pradesh, India



## Uttar Pradesh

Year 2011- 2017

40 Blocks have reported KA cases

Ballia	-	14 blocks
Kushinagar	-	9 blocks
Deoria	-	6 blocks
Ghazipur	-	4 blocks
Varanasi	-	2 blocks
Bhadohi	-	1 block
Gorakhpur	-	1 block
Jaunpur	-	1 block
Sultanpur	-	1 block
Mau	-	1 block

5 Blocks have reported PKDL cases

Ballia	-	2 blocks
Kushinagar	-	2 block
Deoria	-	1 block

All blocks with Incidence less than 1 per 10,000 population in 2017



# Block wise cases and incidence rate -2018

District	Block	2015		2016		2017		2018	
		# Cases	Incidence Rate	# Cases	Incidence Rate	# Cases	Incidence Rate	# Cases	Incidence Rate
KUSHINAGAR	DUDHAI	33	1.02	11	0.33	3	0.09	1	0.03
KUSHINAGAR	FAZILNAGAR	2	0.08	2	0.08	0	-	0	-
KUSHINAGAR	KASIA	1	0.05	3	0.14	1	0.05	0	-
KUSHINAGAR	KUBERNATH	0	-	0	-	0	-	2	0.05
KUSHINAGAR	NEBUA NAURANGIA	0	-	0	-	1	0.04	0	-
KUSHINAGAR	RAMKOLA	0	-	0	-	1	0.04	0	-
KUSHINAGAR	TAMKUHI	25	0.84	23	0.76	12	0.39	1	0.03
KUSHINAGAR	TARYASUJAN	6	0.19	29	0.91	28	0.86	1	0.03
KUSHINAGAR	URBAN PADRAUNA	35	0.83	11	0.25	14	0.32	0	-
KUSHINAGAR	VISHNUPURA	6	0.22	0	-	1	0.03	0	-
DEORIA	BANKATA	4	0.20	5	0.25	20	0.99	0	-
DEORIA	BHALUANI	1	0.05	0	-	0	-	0	-
DEORIA	BHATNI	0	-	0	-	1	0.05	0	-
DEORIA	DESAHI DEORIA	0	-	1	0.07	3	0.21	0	-
DEORIA	MAHEN	0	-	1	0.07	0	-	0	-
DEORIA	PATHAR DEWA	0	-	1	0.05	0	-	0	-
BALLIA	BAIRIA	1	0.05	3	0.16	1	0.05	0	-
BALLIA	BANSDIH	0	-	0	-	2	0.11	0	-
BALLIA	BELHARI	2	0.14	0	-	2	0.14	0	-
BALLIA	BERUARWARI	0	-	0	-	3	0.22	0	-
BALLIA	CHILKAHAR	1	0.05	0	-	2	0.10	0	-
BALLIA	DUBHAR	1	0.05	1	0.05	2	0.10	0	-
BALLIA	GARWAR	0	-	0	-	1	0.05	0	-
BALLIA	HANUMANGANJ	0	-	2	0.09	0	-	0	-
BALLIA	MANIYAR	0	-	1	0.07	1	0.07	0	-
BALLIA	MURLI CHHAPRA	0	-	0	-	2	0.12	0	-
BALLIA	NAWANNAGAR	1	0.06	0	-	0	-	0	-
BALLIA	PANDAH	1	0.06	0	-	0	-	0	-
BALLIA	REWATI	7	0.43	5	0.30	10	0.59	0	-
BALLIA	SIYAR	0	-	0	-	1	0.04	1	0.03
BALLIA	SOHAON	1	0.06	1	0.06	0	-	0	-
BALLIA	RATSAR	-	-	-	-	-	-	1	0.03

# Block wise cases and incidence rate

District	Block	2015		2016		2017		2018	
		# Cases	Incidence Rate	# Cases	Incidence Rate	# Cases	Incidence Rate	# Cases	Incidence Rate
GHAZIPUR	BARACHAWAR	1	<b>0.05</b>	0	-	0	-	0	-
GHAZIPUR	GONDAUR	1	<b>0.05</b>	0	-	1	<b>0.05</b>	0	-
GHAZIPUR	MANIHARI	0	-	1	<b>0.04</b>	0	-	0	-
GHAZIPUR	MOHAMMADABAD	0	-	1	<b>0.04</b>	2	<b>0.08</b>	0	-
SULTANPUR	BHADAIYAN	1	<b>0.06</b>	3	<b>0.18</b>	0	-	0	-
GORAKHPUR	SARDAR NAGAR	0	-	1	<b>0.05</b>	0	-	0	-
JAUNPUR	DOBHI	0	-	1	<b>0.06</b>	0	-	0	-

# Hot Spot villages having $\geq 3$ KA cases

## 2015

Sr No	District	Block	Village Name
1	Ballia	Rewati	Reoti (5)
2	Kushinagar	Dudhai	Ganeshpatti (3)
3	Kushinagar	Dudhai	Gauri Jagdish (5)
4	Kushinagar	Dudhai	Mathiya Mafi (3)
5	Kushinagar	Dudhai	Rakba Dulmapatti (3)
6	Kushinagar	Tamkuhi	Divani Banjarwa (17)
7	Kushinagar	Tamkuhi	Katahari Bag (5)
8	Kushinagar	Taryasujan	Daniyadi (3)
9	Kushinagar	Urban Padrauna	Jangal Piparasi (7)
10	Kushinagar	Urban Padrauna	Nahar Chhapra (24)

## 2017

Sr No	District	Block	Village Name
1	Kushinagar	Urban Padrauna	Nahar Chhapra (5)
2	Kushinagar	Tamkuhi	Dibani Ramnagar (4)
3	Kushinagar	Tamkuhi	Kathari Bagh (3)
4	Kushinagar	Taryasujan	Bendupar Khalwa Tola (3)
5	Ballia	Rewati	Ward No.8 (3)
6	Deoria	Bankata	Rajpur (3)

## 2016

Sr No	District	Block	Village Name
1	Kushinagar	Dudhai	Mathiya Mafi (3)
2	Kushinagar	Tamkuhi	Divani Banjarwa (12)
3	Kushinagar	Tamkuhi	Katahari Bag (4)
4	Kushinagar	Taryasujan	Kotawa (5)
5	Kushinagar	Taryasujan	Firojahan (3)
6	Kushinagar	Taryasujan	Mishrauli (4)
7	Kushinagar	Taryasujan	Sumahi Sangram (3)
8	Kushinagar	Urban Padrauna	Nahar Chapara (4)
9	Sultanpur	Bhadaiyan	Abhiyakala (3)

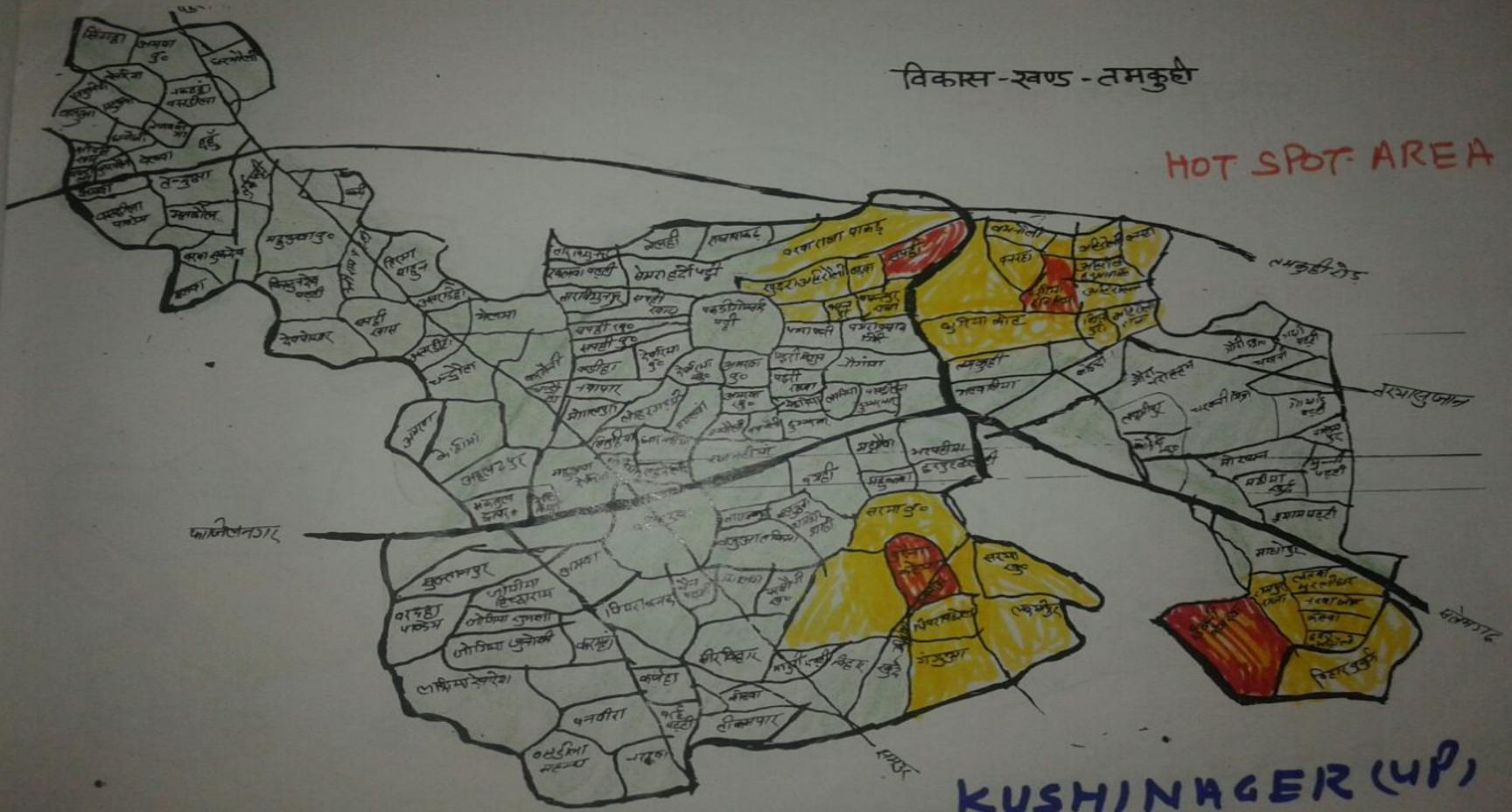


विकास-खण्ड - तमकुहे

HOT SPOT AREA

फाजेजनागर

KUSHINAGER (UP)



# ACTIVE CASE SEARCHES - 2017

S.No.	Block /P.H.C	Active Case Search (ACS)							
		No. of Persons Examined	No. of Suspected of KA	No. of suspects tested RK16/39	No. of Positives	No. of tested HIV & T.B. (of KA positive cases)		No. of HIV & TB Positives	
						HIV	TB	HIV	TB
1	Ballia	443	443	443	16	1	1	0	0
2	Bhadohi	529	529	529	0	0	0	0	0
3	Deoria	828	828	828	0	0	0	0	0
4	Ghazipur	1284	1284	1284	0	0	0	0	0
5	Gorakhpur	338	338	338	0	0	0	0	0
6	Jaunpur	510	510	510	0	0	0	0	0
7	Kushinagar	997	997	997	78	7	7	0	0
8	Sultanpur	348	348	348	0	0	0	0	0
9	Varanasi	603	603	603	0	0	0	0	0
	<b>Total</b>	<b>5880</b>	<b>5880</b>	<b>5880</b>	<b>94</b>	<b>0</b>	<b>0</b>	<b>0</b>	<b>0</b>

# Status of KA affected villages

State	2015				2016				2017				2018			
	Block	Villages	New villages added	Repeat villages	Block	Villages	New villages added	Repeat villages	Block	Villages	New villages added	Repeat villages	Block	Villages	New villages added	Repeat villages
Ballia	8	11	11	0	6	12	12	0	11	24	23	1	0	0	0	0
Deoria	2	5	5	0	4	8	8	0	3	16	13	3	0	0	0	0
Ghazipur	2	2	2	0	2	2	2	0	2	3	3	0	0	0	0	0
Gorakhpur	0	0	0	0	1	1	1	0	0	0	0	0	0	0	0	0
Jaunpur	0	0	0	0	1	1	1	0	0	0	0	0	0	0	0	0
Kushinagar	7	41	39	2	6	44	33	11	8	46	39	7	4	5	3	2
Mau	0	0	0	0	0	0	0	0	1	1	1	0	0	0	0	0
Sultanpur	1	1	1	0	1	1	0	1	0	0	0	0	0	0	0	0
<b>Uttar Pradesh</b>	<b>20</b>	<b>60</b>	<b>58</b>	<b>2</b>	<b>21</b>	<b>69</b>	<b>57</b>	<b>12</b>	<b>25</b>	<b>90</b>	<b>79</b>	<b>11</b>	<b>6</b>	<b>7</b>	<b>4</b>	<b>3</b>

In the last 2 years 90% of the endemic villages were new villages

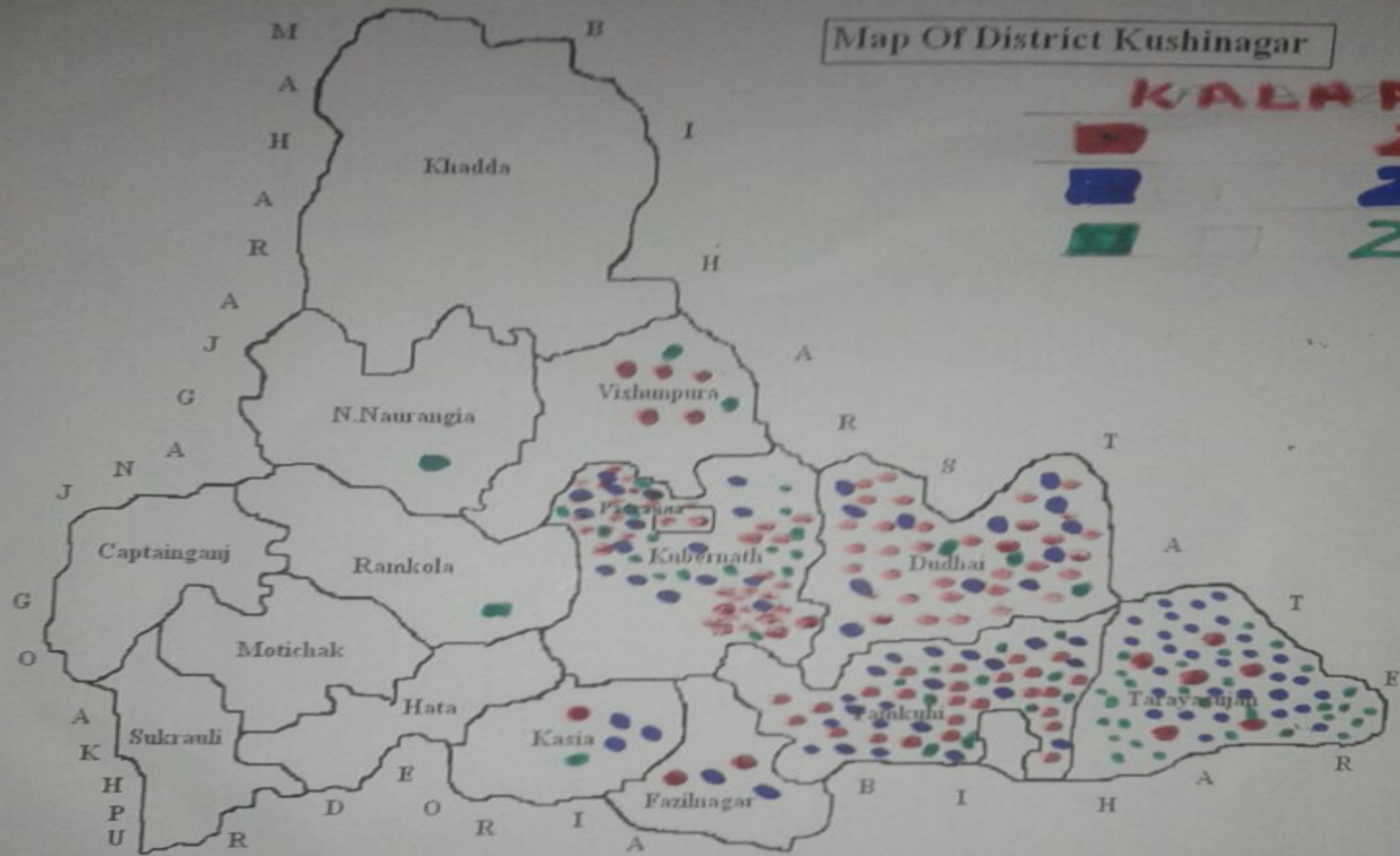
Need of holistic upscaling of all surveillance activities throughout the blocks/district

# SPOT MAPS OF CASES – 3 YRS

AN ATTEMPT TO STUDY THE PATTERN OF APPEARANCE OF  
CASES TO NEWER VILLAGES



Map Of District Kushinagar



**KALPAZAR**  
**2015**  
**2016**  
**2017**

**KUSHINAGER**  
**(UP)**





विकास-खण्ड-कसिया  
 HRA-मानचित्र

# CHC KASIA

कसिया  
 N.H.28

RA :- ●  
 RD :- ■

# KALAAZAR.



2015  
 2016  
 2017

# KUSHINAGER UP

CHC RAMKOLA  
KALAZAR

■ 2015  
■ 2016  
■ 2017



KUSHINAGER  
UP



# ACTIVE CASE DETECTION-01-05-18 To 15-05-18

## Active Case Detection

S.No	District	Blocks	Villages	District Level Training for Trainers and Coordinators	Block level Training for Trainers and Coordinators)	No.of Training Sessions at the PHC	No.of Coordinators	No.of MO (1 MO from each endemic Block)	No.of LT (1 LT from each endemic Block)	No.of ANM (1 ANM from each endemic Block)	No of Camps
1	Kushinagar	9	119	2	0	14	23	9	9	9	23
2	Balia	14	45	1	0	14	16	14	14	14	16
3	Deoria	6	29	1	0	7	9	6	6	6	9
4	Ghazipur	4	9	1	0	4	4	4	4	4	4
5	Gorakhpur	1	1	0	1	1	1	1	1	1	1
6	Jaunpur	1	1	0	1	1	1	1	1	1	1
7	Mau	1	1	0	1	1	1	1	1	1	1
8	Bhadohi	1	1	0	1	1	1	1	1	1	1
9	Sultanpur	1	1	0	1	1	1	1	1	1	1
10	Varanasi	2	2	0	2	2	2	2	2	2	2
	10	40	209	5	7	46	59	40	40	40	59

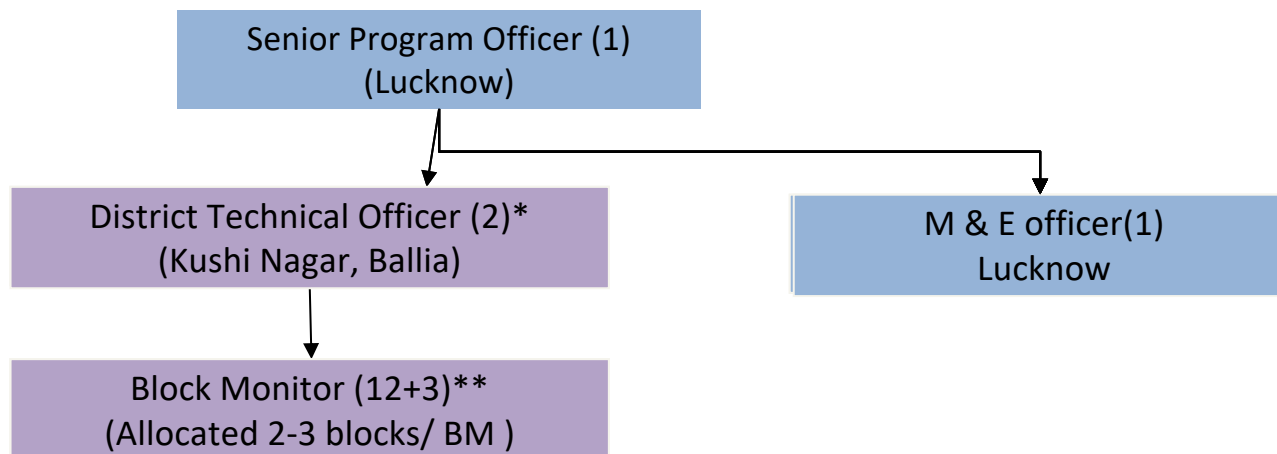
# CBRP/KA MITRA-Villages where >3 cases in Last 3 years

## Kalaazar Mitra/CBRP- Villages UP

<b>Sr No</b>	<b>District</b>	<b>Block</b>	<b>Village Name</b>
<b>1</b>	Ballia	Rewati	Reoti
<b>2</b>	Kushinagar	Dudhai	Ganeshpatti
<b>3</b>	Kushinagar	Dudhai	Gauri Jagdish
<b>4</b>	Kushinagar	Dudhai	Mathiya Mafi
<b>5</b>	Kushinagar	Dudhai	Rakba Dulmapatti
<b>6</b>	Kushinagar	Tamkuhi	Divani Banjarwa
<b>7</b>	Kushinagar	Tamkuhi	Katahari Bag
<b>8</b>	Kushinagar	Taryasujan	Daniyadi
<b>9</b>	Kushinagar	Urban Padrauna	Jangal Piparasi
<b>10</b>	Kushinagar	Urban Padrauna	Nahar Chhapra
<b>11</b>	Kushinagar	Taryasujan	Kotawa
<b>12</b>	Kushinagar	Taryasujan	Firojahan
<b>13</b>	Kushinagar	Taryasujan	Mishrauli
<b>14</b>	Kushinagar	Taryasujan	Sumahi Sangram
<b>15</b>	Sultanpur	Bhadaiyan	Abhiyakala
<b>16</b>	Kushinagar	Urban Padrauna	Nahar Chhapra
<b>17</b>	Kushinagar	Tamkuhi	Dibani Ramnagar
<b>18</b>	Kushinagar	Taryasujan	Bendupar Khalwa Tola
<b>19</b>	Deoria	Bankata	Rajpur



# Project organogram(PATH)



\*District Technical Officers will provide all technical support to the district malaria officer (DMO) and will monitor and supervise the work of the Block Monitor.

\*\*Block Monitors will coordinate with health supervisors in block and district hospitals and involve them in surveillance & control activities. They will also be involved in community awareness and capacity building of peripheral workers, including ASHAs, AWWs, ANMs, community leaders, and volunteers.

# Field staff allocation: Block Monitors

S. No.	District	Blocks	Block Monitor Allocation	Cases in 2017	Cases in 2016	Cases in 2015	Cases in 2014	Cases in 2013	Cases in 2012	Cases in 2011	Cases in 2010	Total cases (2010 to 2017)
1	Ballia	Dubhar	BM-1	2	1	1	0	0	0	1	3	8
2	Ballia	Kotwa	BM-2	0	3	1	0	0	0	0	0	4
3	Ballia	Belhari/Sonwani	BM-3	2	0	2	0	0	0	0	0	4
4	Deoria	Bankata	BM-4	19	5	4	0	2	2	1	1	34
5	Deoria	Deshi Deoria	BM-5	2	1	0	0	0	0	0	0	3
6	Ghazipur	Gournour	BM-6	1	0	1	0	1	0	3	0	6
7	Kushinagar	Dudahi	BM-7	4	12	32	11	5	0	0	0	64
8	Kushinagar	Tamkuhi	BM-8	12	22	25	0	2	0	0	0	61
9	Kushinagar	Padrouna	BM-9	14	11	36	0	0	0	0	1	62
10	Kushinagar	Sevrahi/Tarya	BM-10	25	28	6	0	0	0	0	0	59
11	Sultnpur	Bhadiya	BM-11	0	3	1	0	0	0	0	0	4
12	Jaunpur	Dobhi	Add- BM-11	0	1	0	0	0	0	0	0	1
13	Varanasi	Chiraigaon	BM-12	0	0	0	0	0	0	1	2	3
14	Bhadohi	Piprahi	Add- BM-12	0	0	0	0	0	0	1	0	1
15	Kushinagar	Kasya	BM-13	1	3	1	0	0	0	2	4	11
16	Gorakhpur	Sardar nagar	Add BM- 13	0	1	0	0	0	0	0	0	1

# Villages going for 1<sup>st</sup> round of IRS in 2018

District	Affected blocks since 2015 to 2018	No. of blocks with single village	No. of blocks with more than one village	Affected villages since 2015 to 2018
Ballia	15	4	11	47
Deoria	7	3	4	27
Ghazipur	4	2	2	7
Gorakhpur	1	1	0	1
Jaunpur	1	1	0	1
Mau	1	1	0	1
Sultanpur	1	1	0	1
Kushinagar	10	2	8	115
<b>Total</b>	<b>40</b>	<b>15</b>	<b>25</b>	<b>200</b>

NO MORE SWOLLEN ABDOMEN AND LOSS OF LIFE DUE TO KA



MOVING AHEAD TOWARDS GOAL OF  
**KALA AZAR ELIMINATION**