

LEGEND

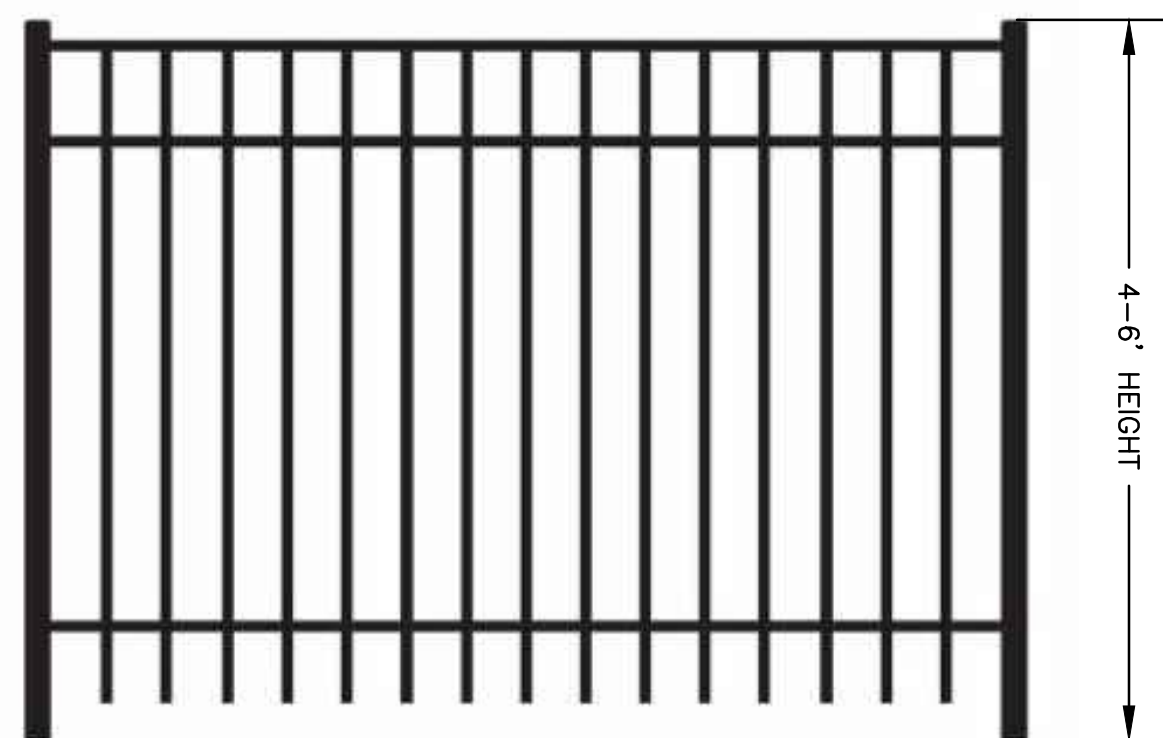
---	BOUNDARY
- - - -	EXISTING 2' CONTOUR
- - - -	EXISTING 10' CONTOUR
*	PROPOSED SITE LIGHT POLE
▶	BUILDING ENTRANCE/EXIT
—	FREE-STANDING Pylon/MONUMENT SIGN

SIGNAGE
SIGNAGE SIZE, HEIGHT AND LOCATION SHALL COMPLY WITH STAFFORD COUNTY CODE REQUIREMENTS AT THE TIME OF FINAL ENGINEERING.

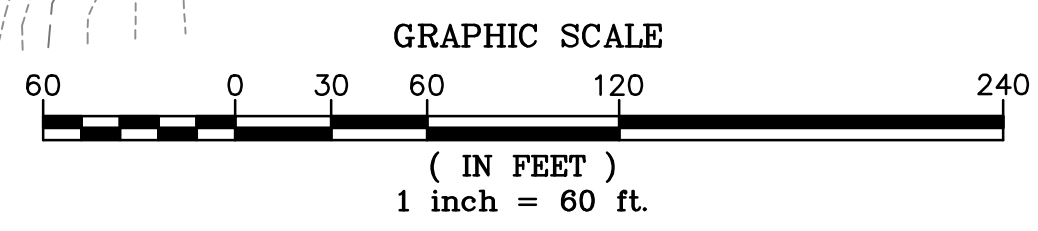
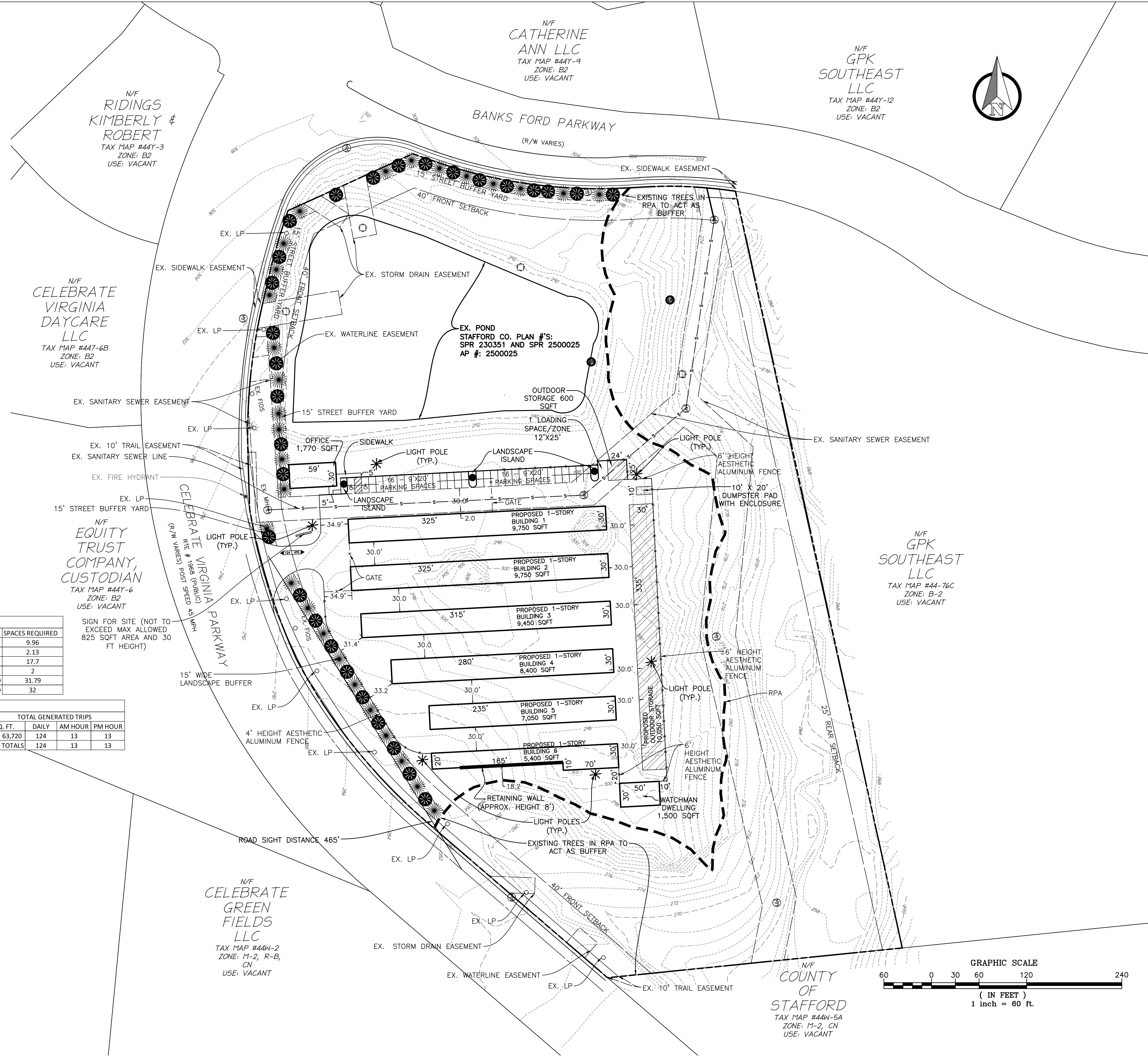
PARKING TABULATION			
USE	REQUIREMENT	UNIT	SPACES REQUIRED
STORAGE, INDOOR	1 SPACES/5,000 GFA	49,800	9.96
STORAGE, OUTDOOR	1 SPACES/5,000 GFA	10,650	2.13
STORAGE, MINI WAREHOUSE (OFFICE)	3 SPACES/300 GFA	1,770	17.7
DWELLING FOR WATCHMAN	2 SPACES/DWELLING	1	2
		TOTAL REQUIRED	31.79
		TOTAL PROVIDED	32

TRIP GENERATION TABULATION								
ITE CODE	UNIT	TRIP GENERATION RATES			TOTAL GENERATED TRIPS			
		DAILY	AM HOUR	PM HOUR	DAILY	AM HOUR	PM HOUR	
MINI-WAREHOUSE (151)	1000 SQ. FT.	1.95	0.2	0.2	63,720	124	13	13
TOTALS					124	13	13	

SIGN FOR SITE (NOT TO EXCEED MAX ALLOWED 825 SQFT AREA AND 30 FT HEIGHT)



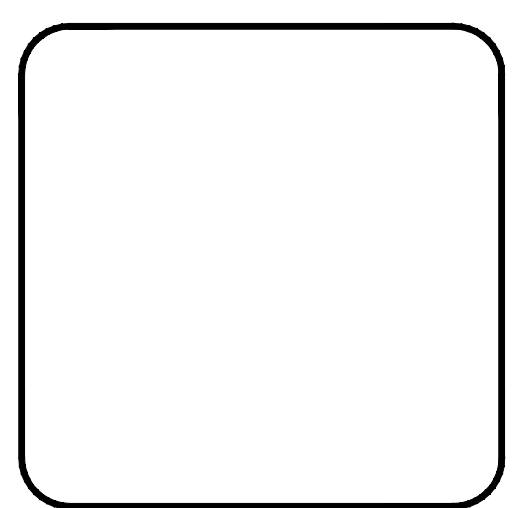
AESTHETIC ALUMINUM FENCE DETAIL



LEGACY ENGINEERING
419 CHATHAM SQUARE OFFICE PARK
FREDERICKSBURG, VA 22405
www.legacy-eng.com
540.373.8350 (p) 540.369.4499 (f)

**CELEBRATE VIRGINIA SELF STORAGE
GENERALIZED DEVELOPMENT PLAN**

DATE	REVIEW STATUS	REVISION	NO
11/24/2021	REVISED PER COUNTY COMMENTS	1	



FILE NO.	SHEET
DATE	2
6/4/2021	
SCALE	OF 2
1" = 60'	

HARTWOOD MAGISTERIAL DISTRICT
STAFFORD COUNTY, VA