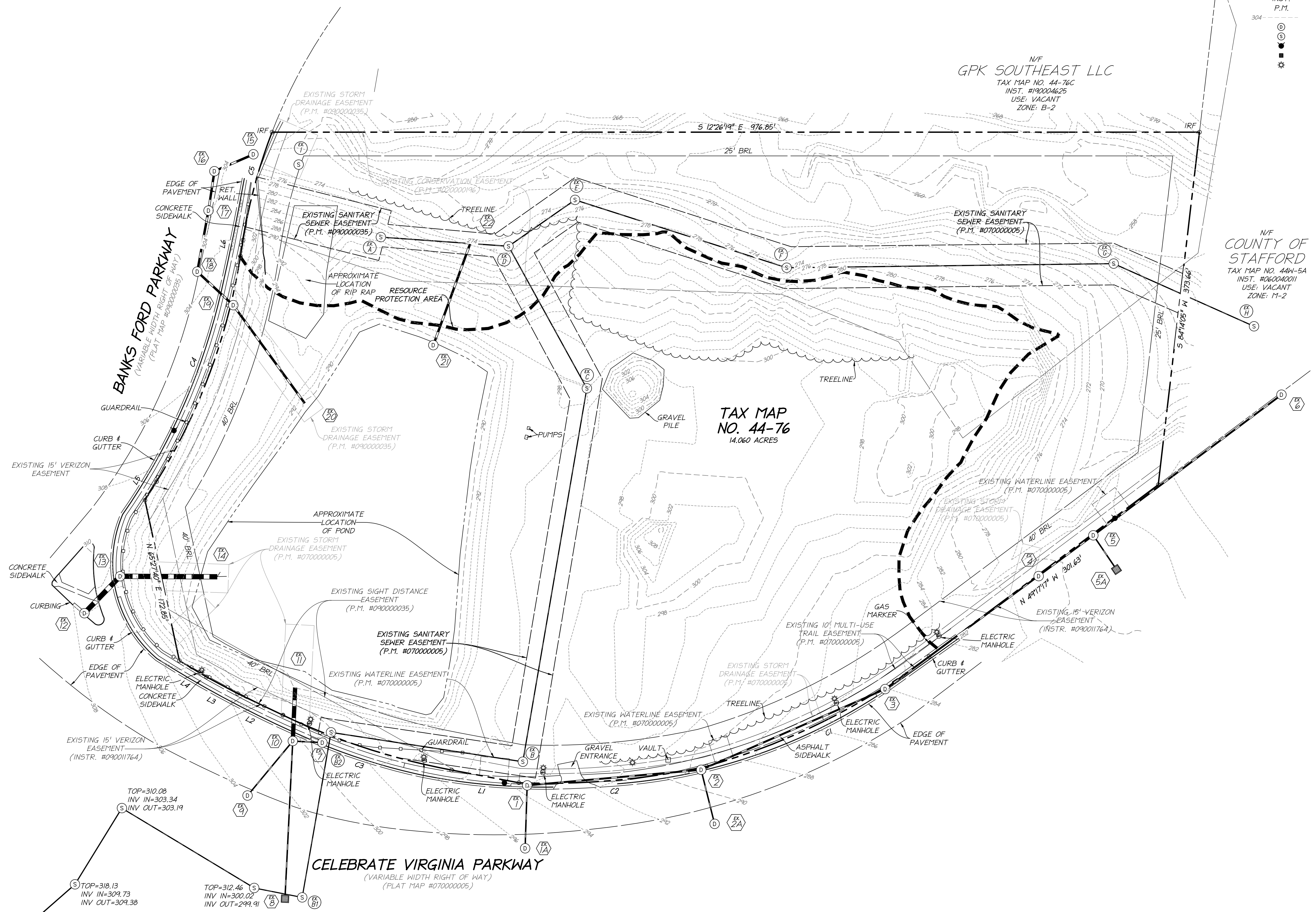


VIRGINIA STATE GRID
NORTH (NAD 83)

LEGEND

- BRL BUILDING RESTRICTION LINE
- IRF IRON ROD FOUND
- N/F NOW OR FORMERLY
- INV. INVERT
- CPP CORRUGATED PLASTIC PIPE
- INST. INSTRUMENT
- P.M. PLAT MAP
- EXISTING CONTOUR
- STORM MANHOLE
- SANITARY MANHOLE
- FIRE HYDRANT
- STORM GRATE
- LIGHT POLE

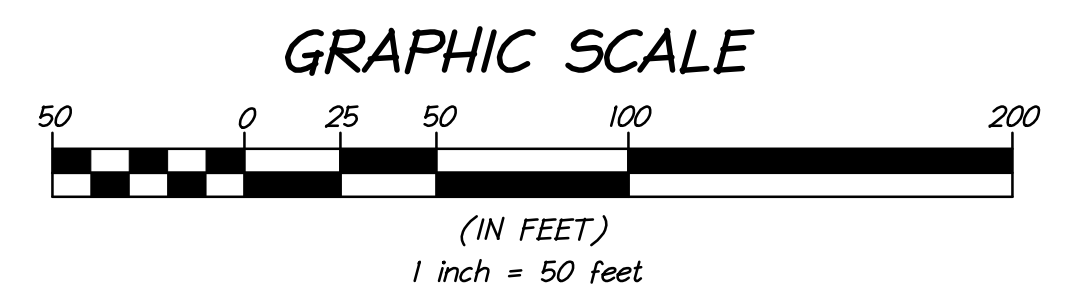


N/F
GPK SOUTHEAST LLC
TAX MAP NO. 44-76C
INST. #190004625
USE: VACANT
ZONE: B-2

N/F
COUNTY OF STAFFORD
TAX MAP NO. 44W-5A
INST. #060040011
USE: VACANT
ZONE: M-2

TAX MAP NO. 44-76
14.060 ACRES

CELEBRATE VIRGINIA PARKWAY
(VARIABLE WIDTH RIGHT OF WAY)
(PLAT MAP #070000005)



LEGACY ENGINEERING
419 CHATHAM SQUARE OFFICE PARK
FREDERICKSBURG, VA 22405
WWW.LEGACY-ENG.COM
540.373.8350 (P) 540.369.4499 (F)

TOPOGRAPHIC BASE SHEET
ON THE PROPERTY OF
FIREHAWK PROPERTY LLC
TAX MAP NO. 44-76
CELEBRATE VIRGINIA COMMERCIAL
PLAT MAP #0900000035
FALMOUTH-HARTWOOD MAGISTERIAL DISTRICT
STAFFORD COUNTY, VIRGINIA

REVISION:
9/14/22 REVISED SANITARY BI TO B2

COMMONWEALTH OF VIRGINIA
08/27/2021
BRUCE A. REESE
Lic. No. 3313
LAND SURVEYOR

DATE: 08/27/2021
SCALE: 1" = 50'
SHEET: 2 OF 2