



Regenerative Health Solutions

Product Catalog

PRP Separation Kits

Centrifuges for PRP

Activators and Filler Makers

Skin Care

AnteAGE MD

Marketing Materials

Training

Appendix: Specification Sheets

Regenerative Health Solutions

P.O. Box 510818

Punta Gorda, FL 33951

PlateletRichPlasma@RHealthSolutions.com

www.RHealthSolutions.com

(941) 259-4811

PRP Separation Kits



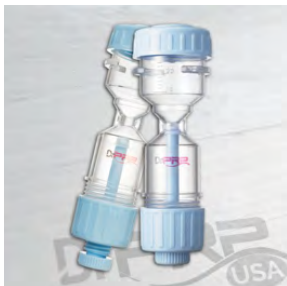
PRP Kit (100-Pack)



With Dr. PRP Platelet separation kit, it is easy to collect your patient's blood and turn it into highly concentrated (platelet-rich) plasma. Dr.PR.P uses a simple, innovative design to efficiently capture the majority of the patient's platelets.

This pack includes 10 packs of 10-pack Dr PRP prp kits. A total of 100 units. Each DrPRP tube also comes with its own anticoagulant.

PRP Kit (10-Pack)



This is a pack of 10 Dr PRP tube kits. Each DrPRP tube also comes with its own anticoagulant.

Dr.PR.P is a medical kit designed for fast & efficient PRP separation. With this, you will get perfect concentration of Platelet Rich Plasma (PRP) every time you use it. For consistently efficient PRP treatments with faster results, you can count on Dr. PRP's patented one-step platelet separation kit.

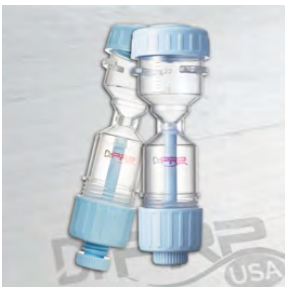
PRP Kit Accessories Pack



This pack is sold without the PRP Separation tube, and contains all the items needed for PRP separation.

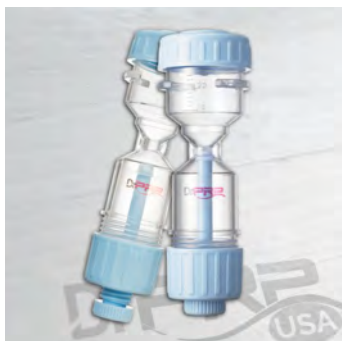
- ONE 20cc syringe
- ONE 10cc syringe
- ONE 5cc syringe
- FOUR needles 20, 23 gauge
- ONE butterfly needle
- ONE tourniquet
- ONE Band Aid
- ONE TAPE
- ONE Alcohol Swab
- ONE 2 x 2 Gauze

PRP Kit Sample



With Dr. PRP Platelet separation kit, its easy to collect your patient's blood and turn it into highly concentrated (platelet-rich) plasma. Dr.PRP uses a simple, innovative design to efficiently capture the majority of the patient's platelets.

PRP Kit Sample With Accessories



Every sample Dr.PRP kit comes with the following: ONE Dr.PRP Plasma Separation kit and ONE Dr.PRP Accessories pack.

Accessories Kit contains the following:

- ONE 20cc syringe
- ONE 10cc syringe
- ONE 5cc syringe
- FOUR needles 20, 23 gauge
- ONE butterfly needle
- ONE tourniquet
- ONE Band Aid
- ONE Tape
- ONE Alcohol Swab
- ONE 2 x 2 gauze

This PRP kit comes with 30 days of complimentary support. You can contact Dr.PRP specialists for consultation and clarification anytime during the 30 days. This is a sample only – NO RETURNS OR REFUNDS FOR THIS PURCHASE.

Centrifuges for PRP



Centrifuge For PRP With Accessories



Centrifuge for Platelet-Rich Plasma Separation

- Perfect for Clinical Use – compact and Versatile CM-7S, with its exceptionally slim design, is one of the most compact and versatile swing-out centrifuges on the market.
- Can be used with DrPRP kits right out of the box.
- Rapid acceleration/Braking system. The CM-7S has a rotational speed of up to 3500 RPM, and comes with a highly responsive rapid acceleration/braking system.
- Designed for safety. This centrifuge is cold room and refrigerator safe, and comes equipped with a transparent lid and automatic lid lock for extra convenience and safety.
- RPM/RCF Indicator
- 2300 RCF/3500 RPM; FDA Registered
- Variable-speed benchtop centrifuge with speeds ranging from 100 to 3,500 rpm
- Compatible with four interchangeable swing-out rotors and a variety of adapters (sold separately)
- Rotor accepts up to six 50mL tubes
- Digital display and controls for setting program parameter values, rubberized start/stop buttons, and a digital rotor imbalance sensor for fault detection.
- Automatically stops when glass lid opens or if rotor becomes imbalanced

CM-7S Spec Sheet is included in the appendix.

Extra Wide Lab Cart For PRP Centrifuge



Extra Wide Lab Rack for Platelet-Rich Plasma Separation

Now comes with lifetime guarantee!

- Wide 36 inch white, locking, polyethylene lab cart.
- Large work surface – 35 x 36 x 18 inches (WxHxD).
- For the entire Platelet-Rich Plasma separation process.
- Ideal for keeping everything PRP-related in one place.
- Three (3) oversized white locking drawers.
- A large storage bin for bulky items.
- Chemically resistant polyethylene and ABS construction.
- Sliding door locks in up or down position.
- Four 3-inch non-marking rubber casters (2 with brakes).

This multi-tasking storage cabinet gives portability to your Platelet-Rich Plasma set up. From blood draw to PRP separation in one place. Drag it from patient to patient and perform Platelet-Rich Plasma treatment on the spot in front of their eyes. This demonstrates for patients of the autologous self-healing function of PRP.

Lab Cart For PRP Centrifuge



Lab Rack for Platelet-Rich Plasma Separation

Now comes with lifetime guarantee!

- White, locking, polyethylene lab cart.
- Fits the Platelet-Rich Plasma centrifuge.
- Ideal for keeping everything PRP-related in one place.
- Three (3) full-extension Watermelon Pink drawers (12 3/4" x 3 5/8" x 15 7/8" WHD).
- Six (6) side shelves and 1 lockable bulk storage area.
- *Chemically resistant* polyethylene and ABS construction.
- Built in document holder and dispenser for Kim wipes and gloves.
- Four 3-inch non-marking rubber casters (2 with brakes).

This multi-tasking storage cabinet gives portability to your Platelet-Rich Plasma set up. From blood draw to PRP separation in one place. **Drag it from patient to patient** and perform Platelet-Rich Plasma treatment on the spot in front of their eyes. This demonstrates for patients of the autologous self-healing function of PRP.

Large Capacity Platelet-Rich Plasma (PRP) Centrifuge



- Use the simple, two-button interface to select a preset, or program and record your validated settings on the included label. Process 75-100 mm (up to 50 mL) tubes in the same holder.
- Process samples more efficiently. LED lid lighting – **off when the centrifuge is ready to load, on when running, and flashing at the end of each cycle.**
- Protect your lab with imbalance detection and a shatterproof lid which can only be opened when the centrifuge's rotor is stopped, even if the unit loses power.
- Features
 - Comes with a custom rotor & bucket. Buckets for 50 mL tubes available.
 - **Fully Programmable** – Save and recall 10 easily customizable cycle settings, or choose from three presets for chemistry, coag, and urine
 - **2-Stage Horizontal Rotor** – Drucker Diagnostics' patented swing-out horizontal rotor design produces ideal horizontally separated samples
 - **Cool Operation** – Unique design of the convection based cooling system protects the samples even under the heaviest workloads
 - **Intuitive Lid Lighting** – Lid lights flash at the end of each cycle and continue flashing until the lid is opened
 - **Automatic Lid Lock** – Centrifuge will not run with the lid open and the lid cannot be opened while samples are spinning
 - **Clear Shatter Proof Lid** – Allows for safe sample observation and optical calibrations
 - **Reinforced Guard Bowl** – Provides maximum safety and durability
 - **Brushless DC Motor** – Years of operation with no routine maintenance
 - **Quiet Operation** – Enjoy a sound level of just 64 dBA
 - **Regulatory Approvals** – Certified to US, Canadian, and European Safety regulations and standards
- **Capacity: 24 x 75-100 mm (up to 6 x 50 mL)**
- Max RCF: 2,000 xg
- Max RPM: 3,400 xg
- Weight: 39 lbs (17 kg)
- Dimensions: 9 x 17 x 15 in (23 x 43 x 38 cm)
- **Warranty: 2 years (lifetime on rotor)**
Spec Sheet for this Centrifuge is in the Appendix

Rotor For PRP Kit Centrifuge for ELMI



This is a universal 4-bucket rotor perfectly suited for Platelet-Rich Plasma separation. Designed for the DrPRP lab centrifuge.

- Max number of test tubes: 4
- Max test tube volume: 50ml
- Max test tube size: 30 x 135mm
- Max centrifugation speed: 3500 RPM
- Works with ELMI CM-6, ELMI CM-7 and ELMI CM-8 line of centrifuges

Specification sheets for centrifuges in the Appendix.

Activators and Filler Makers



DrPRP LED Cell Activator



This LED Cell Activator device uses LED lights at a specific wavelength and wattage to increase cellular viability, proliferation and osteogenic differentiation. It can be used with Platelet-Rich Plasma or Mesenchymal stem cells.

This process also promotes the expression of beta1-integrin, one of the keys to successful tissue repair.

1. Adjustable wavelength – suits different purposes
2. RED promotes cell growth and collagen synthesis
3. BLUE for purification and prevention of lipolysis
4. GREEN increases the cellular immunity
5. YELLOW stimulates cell activation
6. Independent dual activation area for two 50ml conical tubes

DrPRP Plasma Fill™ Bio-Filler Maker



The Plasma Fill™ Bio-Filler Maker is a quick and reliable device to turn Platelet-Poor Plasma (PPP) into Plasma Bio-Filler Gel. It produces quality Bio-Filler that can be injected on the face, neck, breasts and buttocks to correct lack of volume, wrinkles, deep folds, unaesthetic lines, and unusual thinness. Injecting this is safe as there's no question of rejection since it's derived from patient's own blood (autologous).

1. Get perfect quality Plasma Bio-Filler in minutes
2. Fast operation – doesn't need preheating
3. Obtain up to 10 5ml syringes full of Plasma Bio-Fillers
4. Easy to operate – just press one button
5. Customize and record function for additional versatility
6. Small, desktop size fits easily in your office

Plasma Fill™ For Medical Aesthetic Rejuvenation Derived From Autologous Blood

The Plasma Bio-Filler Facelift is now the most exciting medical aesthetic process to be introduced in dermatology. Here the filler gel is derived from the patient's own blood so there is no risk of allergic reactions. It works for wrinkle augmentation, fine lines reduction as well as to volumize, lift, and rejuvenate the face, neck and hands. The softness of Autologous Blood Bio-Filler is much better than those that derived from fat.

How The Instant Plasma Bio-Filler Maker Works

This is a one-step machine to produce Bio-Fillers from Platelet-Poor Plasma (PPP) derived from the patient's own blood. Hence, you will need a PRP tube like the DrPRP Kit and a centrifuge for preparing the PPP. Once the PPP is derived, it can be transferred to special syringes and incubated in this machine for obtaining Plasma Bio-Filler. This machine uses a precisely controlled heating and cooling system to turn PPP into Plasma Bio-Filler.

Why Use DrPRP Plasma Bio-Filler Maker?

DrPRP Plasma Bio-Filler Maker uses semiconductor chips to precisely regulate our special heating and cooling algorithm that produces the best quality Plasma Bio-Filler that can be safely injected to needed areas in the body. And as we're using an advanced heating system, there is no need to wait for pre-heating the system. Just drop the syringes, press the button and wait for the completion of the process to get your Plasma Bio-Filler gel.

Skin Care



AnteAGE — Hyaluronic Acid Glide 30mL



Available to medical professionals only

The AnteAGE Hyaluronic Acid Gliding Solution is designed to be used as an adjunct topical to microneedling, microchanneling and/or all other advanced modalities where glide and slip are required. This formula contains a high percentage of High Molecular Weight (HMW) Hyaluronic Acid, as research shows lower molecular weights being pro-inflammatory in the skin. Due to the clean nature of the formulation, utilizing only native human molecules, this glide is especially suitable to protect and soothe "open skin" and provides rapid hydration to compromised tissue.

Includes 1 bottle of 30ml Hyaluronic Acid Gliding Solution.

Description

Our body's skin cells naturally produce Hyaluronic Acid to maintain moisture levels. But when the skin cells can't cope with the production, we can help it by applying AnteAGE Hyaluronic Acid Glide.

Here are the benefits of Hyaluronic Acid:

1. Makes your skin supple by helping skin retain moisture.
2. Helps heal tiny wounds that may occur in skin.
3. Protects skin's natural barriers and slows down its deterioration.
4. Stimulates skin cell regeneration
5. Prevents over-production of oil

AnteAGE — Age Defying Accelerator



AnteAGE — Age Defying Serum



AnteAGE — Age Defying Serum + Accelerator Pack



AnteAGE is derived from stem cells, but not just any type. Mesenchymal stems cells are the human body's natural reservoir of beautifying chemicals called cytokines. They are abundant in our youth, but disappear with age. Cellese highly recommends using both the Serum and Accelerator for the AnteAGE system to work. You may use other products you also have in your routine.

AnteAGE Cleanser 120mL



AnteAGE Cleanser 480mL



The universally formulated AnteAGE® Cleanser is designed to provide a balanced approach to cleansing, for all skin types. As we are exposed to more environmental pollutants, our skin increasingly becomes hypersensitive. This gentle, foaming cleanser, enriched with essential fatty acids, anti-oxidants, anti-inflammatory botanicals and detoxifying actives will thoroughly cleanse all traces of impurities, excess oil and surface debris, while leaving the skin soft, soothed, hydrated and balanced.

- Sulfate-free cleansing agents remove excess oil without stripping the skin
- Soothing botanicals leave the skin feeling calm
- Detoxifies the skin of environmental pollutants
- Essential Fatty Acids enrich the skin's barrier to prevent dehydration
- Gently exfoliates surface dead skin cells

Ingredients:

Aqua (Water), Sodium Hydroxypropylsulfonate Laurylglucoside Crosspolymer, Polyglyceryl-4 Caprate, Sodium Chloride, Glycerin, Sodium Cocoyl Hydrolyzed Amaranth Protein, Gluconolactone, Sodium Cocoamphoacetate, Nymphaea Caerulea (Blue Lotus) Flower Extract, Ethyl Linoleate, Salix Nigra (Willow) Bark Extract, Camellia Oleifera (Green Tea) Leaf Extract, Zeolite, Sodium Hydroxypropylsulfonate Decylglucoside Crosspolymer, Lauryl Glucoside, Sodium Lauryl Glucose Carboxylate, Sodium Cocoyl Glutamate, Sodium Benzoate, Potassium Sorbate, Fragrance/Parfum.

AnteAGE — Microneedling Solution (Home)



Dermal needling or CIT (collagen induction therapy) has become the fastest growing procedure in the skin rejuvenation sector, with more and more companies offering needling devices. Cellese has introduced a high-science cytokine and growth factor topical specifically formulated to work in synergy with dermal needling. Stem Cytokines™ and TGF-beta 3 are combined with hyaluronic acid to produce a product that quickly quenches inflammation while providing pro-healing cytokines. These actives are naturally occurring physiologic substances found within the skin of all people.

Cellese scientists capture these regenerative cells from healthy human adults and grow them in a unique laboratory environment, coaxing them to create an abundance of cytokines. Cytokines play many roles, but the ones we are interested in are those resulting in a transformation of skin's appearance. Beautification chemicals, if you will.

Ingredients: Deionized Water, Stem Cytokines(TM), (proprietary admixture of human bone marrow stem cell derived growth factors and cytokines), Hyaluronic Acid, Dehydroacetic Acid & Benzyl Alcohol as preservative.

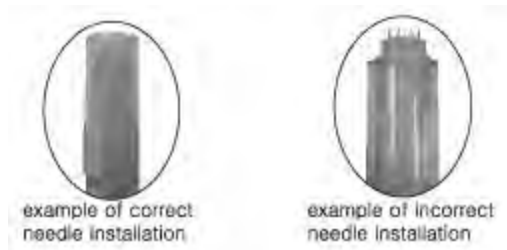
Bella Microneedling Skincare Device Cartridge (10-pack)



How to use Bella

STEP 1 – Insert the needle

Insert the needle tip into the of the device and twist the needle tip lock firmly.



STEP 2 – Connect the Power

Connect the power adapter into the voltage regulator.

STEP 3 – Adjustment the depth

Rotate the needle regulator to adjust the length of the needle.

*Be cautious when controlling Bella's fine adjustment.

STEP 4 – Adjust the power

Press the power button for 2 seconds to turn on and off its power.

*Press the power button to adjust the speed.

STEP 5 – Apply your serum & use

Apply your favorite serum or essence evenly on the skin. Gently start using Bella on your skin.

*All the micro needle are sterilized. Be sure to change the needle every use to avoid infections.

STEP 6 – Disconnect the needle tip

Press the power button for 2 seconds to turn off the power and twist the needle tip to disconnect the needle tip from the device.

Clean the device after use.

CelluPen



Our exclusive CelluPen Start-up Package includes:

- CelluPen
- Battery
- Extra long charging cord
- Carrying case
- 20 - 12 Pin Needle Cartridges

Dr PRP Guarantee – we will repair or replace any undamaged pen, free of charge. Certain restrictions may apply. 1-year warranty.

CelluPen Accessories

12 Pin Needle Cartridge (10-Pack)



36 Pin Needle Cartridge (10-Pack)



Silicon filter prevents backflow for safety & peace of mind.



CelluPen

Etched cartridge especially designed for PRP.



Special cut edge improves media penetration, & ease of glide.



Security grip holds depth in place for precision and accuracy.

Smart battery top offers 3 automatic speeds



Level 1 = High
Level 2 = Medium
Level 3 = Low

Microneedling Aftercare Facial Celluven Mask (5 Pieces)



Active Ingredient: Bio Cellulose

Unlike other masks, bio cellulose is produced by bacteria and not human manufactured. The bio cellulose produced the strain of bacteria called Acetobacter Xylinum, is a super-fine fibre capable of retaining up to 100 times its dry weight in water and thus helps protect the skin's moisture.

Plus, due to the non-human way it is produced, the material is 100% natural, toxin free, and pure.

Additional Ingredients: Coconut, Milk, Tea Tree Oil

Microneedling Aftercare Facial Soothing Mask (5 Pieces)



Active Ingredient: Allantoin Panthenol

Allantoin Panthenol is a complex between Allantoin (q.v.) and Panthenol (q.v.) and works for suppression and relieving of the skin after Micro-needling skincare treatment. It also helps in tissue building and moisturizing.

Active Ingredient: Collagen

Natural plant-based collagen improves skin elasticity and delivers an smoothing effect on the skin.

AnteAGE MD



AnteAGE — Stem BioGel Occlusive Dressing



Lasering USA, a national distributor of fractional CO2 laser machines has for the past year recommended the AnteAGE MD system as part of its post-procedure protocol, having seen up to 40% faster healing with reduced inflammation, swelling, and discomfort when the system is used.

According to Dr. Taylor, President and Medical Director of AnteAGE, Stem BioGel is suitable for recovery from all ablative and semi-ablative treatments, a time when water loss from the skin, and bacterial contamination from the environment can be a problem. The occlusive has been used after dermal needling (also known as CIT, or Collagen Induction Therapy) with good result. Stinging and burning was relieved in minutes, according to Taylor.

AnteAGE – Where Skincare Meets Future

AnteAGE is derived from stem cells, but not just any type. Mesenchymal stem cells are the human body's natural reservoir of beautifying chemicals called cytokines. They are abundant in our youth, but disappear with age. Cellese highly recommends using both the Serum and Accelerator for the AnteAGE system to work. You may use other products you also have in your routine.

What is AnteAGE?

Restore your skin's natural ability to heal itself with AnteAGE®

AnteAGE®, from Cellese Regenerative Therapeutics, is derived from stem cells, but not just any type. Mesenchymal stem cells within the bone marrow are the human body's natural healers. They are abundant in our youth, but progressively disappear with age, leading to slower healing and increased scarring.

The Incredible Power of Stem Cytokines™

Cellese scientists acquire these regenerative cells from healthy young adults and grow them in a unique laboratory environment, coaxing them to create the mixture of bio-chemical signals responsible for cell repair, restoration & rejuvenation. These powerful proteins and growth factors (called Stem Cytokines™) are 100% natural and identical to what is produced within our own bodies every day of our lives.

How Stem Cytokines™ work?

The problem is that as our mesenchymal stem cell population declines with age, so does our production and availability of these important healing signals. AnteAGE® restores youthful, healthier looking skin by replenishing these molecular messengers. Stem Cytokines™ represent a unique and powerful approach to reversing the visible signs of aging, an approach that is scientifically advanced yet completely natural. Because we use only the molecular signals produced, our products do not contain actual cells.

Complete System For Active Skin Care

Cellese recommends using both the Serum and Accelerator for the AnteAGE® system to work optimally. The Serum contains a large dose of Stem Cytokines™ that penetrates deeply into your skin. The Accelerator seals your skin after the Stem Cytokines™ have been absorbed, and also contains other bio-active ingredients and moisturizers of scientifically proven benefit. Because AnteAGE® is a complete system with multiple active ingredients, many users find they can eliminate one or more products from their current skincare routine. Makeup and sun protection can be applied over AnteAGE® in a normal fashion.

AnteAGE MD — Age Defying Accelerator



Available to medical professionals only

AnteAGE® MD Accelerator is rich in powerful moisturizers and revitalizing actives and contains twice the Stem Cytokines™ found in AnteAGE®, along with additional ingredients to give powerful results. It is perfect for post-procedure topical adjuvant following laser, microneedling, abrasive, and other ablative or collagen inducing medical esthetic treatments. Comes in 30ml bottle.

AnteAGE MD — Age Defying Serum



Available to medical professionals only

Restore your skin's ability to heal itself with AnteAGE® MD regenerating serum, which contains twice the Stem Cytokines™ found in AnteAGE®, along with additional ingredients to give powerful results. This elegant serum quickly absorbs into your skin, utilizing nanotechnology to deliver a powerhouse of physiologically balanced Stem Cytokines™, Potent Peptides, and Protective Antioxidants. It is perfect for post-procedure topical adjuvant following laser, microneedling, abrasive, and other ablative or collagen inducing medical esthetic treatments. Comes in 30ml bottle.

AnteAGE MD — Age Defying Serum + Accelerator Pack

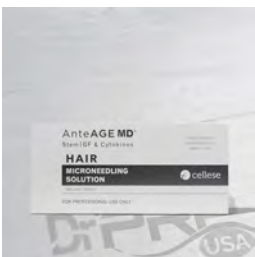


Available to medical professionals only

A pack of ONE AnteAGE MD Age-defying Serum (30ml) and ONE AnteAGE MD Age-defying Accelerator (30ml) for that works beautifully together to restore your youth with the power of stem cells. AnteAGE® MD contains twice the Stem Cytokines™ found in AnteAGE®, along with additional ingredients to give powerful results.

AnteAGE® MD contains twice the Stem Cytokines™ (derived from Mesenchymal stems cells) found in AnteAGE®, along with additional ingredients to provide enhanced anti-aging, pro-healing and anti-inflammatory benefits. With daily use it improves the health and appearance of skin, no matter what one's age, and is particularly well suited for use as a topical adjuvant to promote healing and reduce inflammation following medical esthetic procedures. Cellese highly recommends using both the Serum and Accelerator for the AnteAGE MD system to work. You may use other products you also have in your routine.

AnteAGE MD — Hair Microneedling Solution



Available to medical professionals only

AnteAGE MD Hair Microneedling Solution incorporates recent advances in hair follicle science. Specialized techniques influence bone marrow mesenchymal stem cell cultures to produce conditioned media focused on hair growth (Wnt-1a pathway) while twelve bio-identical growth factors and cytokines, each with proven efficacy in hair follicle stimulation, are added to make this the most scientifically advanced product of its type.

Includes 5 treatments of 2ml each.

AnteAGE MD — Microchanneling: Brightening Solution



Available to medical professionals only

AnteAGE MD Hair Microchanneling: Brightening Solution is designed to enhance tone and optimize the skin's ability to repair and rejuvenate itself via microchanneling delivery. A condition-specific, high intensity 30 minute facial that uses lab-cultured Stem Growth Factors and Cytokines derived from bone marrow stem cells to replenish and recharge your skin's energy while brightening the skin. Enhanced with two powerful peptides to achieve immediate as well as long-lasting results, with no down time.

Includes 5 treatments of 2ml each.

AnteAGE MD — Microchanneling: Clarifying Solution



Available to medical professionals only

AnteAGE MD Hair Microchanneling: Clarifying Solution is a microchanneling clarifying treatment designed to increase collagen production and optimize the skin's ability to repair and rejuvenate itself via microchanneling delivery. A condition-specific, high intensity 30 minute facial that uses lab-cultured Stem Growth Factors and Cytokines derived from bone marrow stem cells to replenish and recharge your skin's energy while clarifying the skin. Enhanced with two powerful peptides to achieve immediate as well as long-lasting results, with no down time.

Includes 5 treatments of 2ml each.

AnteAGE MD — Microneedling Solution



Available to medical professionals only

Stemcell-derived microneedling solution for high intensity anti-aging. Includes 5 x 1.7ml tubes. We think it's a perfect companion for Bella Microneedling machine.

Dermal needling or CIT (collagen induction therapy) has become the fastest growing procedure in the skin rejuvenation sector, with more and more companies offering needling devices. Cellese has introduced a high-science cytokine and growth factor topical specifically formulated to work in synergy with dermal needling. Stem Cytokines™ and TGF-beta 3 are combined with hyaluronic acid to produce a product that quickly quenches inflammation while providing pro-healing cytokines. These actives are naturally occurring physiologic substances found within the skin of all people.

It is also a perfect post-procedure topical for laser, abrasive, and other ablative or collagen inducing medical esthetic treatments.

AnteAGE MD — Microneedling Solution



Available to medical professionals only

AnteAGE MD Microneedling Solution contains pro-healing, anti-inflammatory growth factors and cytokines derived from laboratory culture of human bone marrow mesenchymal stem cells, the specialized cells that science has determined function as "command and control" of healing in all injured tissues. Synthesized human TGF-B3 is added to further reduce inflammation and promote less fibrotic, more fetal-like healing. Hyaluronic acid provides lubrication and is a powerful humectant that promotes rapid re-hydration and volume enhancement within the upper layers of the skin. AnteAGE MD products contain no cells or cell remnants. They are removed during ultrafiltration, the final step in the laboratory culture process.

AnteAGE MD — Regenzyne Stemcell Facial



Available to medical professionals only

AnteAGE® Regenzyne is a non-acid blend of powerful botanical enzymes produced through bacterial fermentation, enriched with anti-inflammatory and anti-oxidant rich ingredients, will soften skin and slough away surface dead skin cells, leaving the skin polished, hydrated and prepared for the AnteAGE® Microchanneling Solution. Designed to be gentle enough for all skin types, it is the perfect companion to all your professional facials and treatments.

- Paraben-Free, Sulfate-Free, Phthalate-Free
- Non-acid approach to exfoliation
- Compatible with all skin types
- Can be used in any other facial treatment protocol

NOT FOR RESALE- Procedural/In-Office Use Only.

Comes in 240ml tube.

AnteAGE MD — Serum Accelerator Travel Pack



Available to medical professionals only

AnteAGE® is a product based on human growth factors. And AnteAGE® MD contains twice the Stem Cytokines™ found in AnteAGE®, along with 21 additional ingredients with proven anti-aging, pro-healing and anti-inflammatory benefits. These are specialized repair stem cells that reach deeper into the skin to signal active regeneration. This triggers immediate skin healing. The products are rigorously tested and perfected in their own research clinic in Newport Beach, California.

AnteAGE MD Travel pack is the perfect skincare companion you need when you are away from home.

SET CONTAINS ONE AnteAGE MD SERUM (30ml) and ONE AnteAGE MD ACCELERATOR (30ml).

AnteAGE MD — Serum Accelerator Trial/Travel kit



Available to medical professionals only

AnteAGE® is a product based on human growth factors. And AnteAGE® MD contains twice the Stem Cytokines™ found in AnteAGE®. These are specialized repair stem cells that reach deeper into the skin to signal active regeneration. These products are rigorously tested and perfected in their own research clinic in Newport Beach, California.

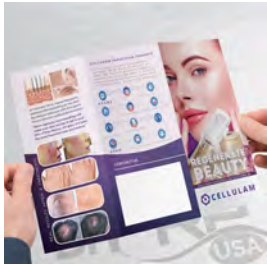
AnteAGE MD Trial pack is perfect for evaluating the feel and earliest effects of the advanced AnteAGE MD System.

Comes in 5ml bottle.

Marketing Materials



PRP Therapy Marketing Brochure – Facial



Specifically Designed For Skincare Centers

This beautifully designed marketing brochure will clearly explain the science of Platelet-Rich Plasma Micro-needling treatments with Bella to your prospective patients. Even though the procedure is extremely simple and easy to explain, your patients might need some visual explanations to quickly decide whether this procedure is for them or not. And nothing else does that job better than this trifold marketing brochure.

Target audience:

These target prospective patients seeking treatments for improving fine lines, deeper wrinkles, acne scars, stretch marks, hyper-pigmentation, enlarged pores and other anti-aging treatments, as well as for those seeking Platelet-Rich Plasma facial for a younger looking skin.

Why You Should Use Marketing Brochures

Your clinic or hospital need printed sales literature for two reasons:

1. **Credibility:** People expect professionalism in everything you do. This includes the way you communicate the value of Platelet-Rich Plasma to your clients. They are more likely to believe what you're saying if you back up what you're saying with printed brochure of some sort.
2. **Time-saving:** A brochure saves you time – it makes educating your prospective patients a breeze. With excellent visuals, a brochure adds a physical dimension to the concept you're explaining. It tells your prospect the key aspects of Platelet-Rich Plasma in just seconds.

Like Hiring A Smart Marketing Assistant

DrPRP USA is a trusted veteran who has been helping Platelet-Rich Plasma practitioners like you to scale their services reliably and profitably for years. This is why most of our clients trust us with their marketing services. When you choose our marketing brochures, it is like hiring a smart marketing assistant that will instantly position you as a top notch provider in the field. This is the least expensive option that gives you the most leverage in your in-office marketing.

Full Specifications

Specification	TriFold Brochure
Product:	Brochures
Variation:	For Platelet-Rich Plasma Facial
Size:	8.5" x 11"
Paper Type:	10 pt. Cardstock Gloss
Folding:	Tri-Fold/Letter Fold (with scoring)
Printed Side:	Outside and Inside
In Sets Of:	100

PRP Therapy Marketing Brochure – Hair Regeneration



Specifically Designed For Hair Regeneration Clinics

This beautifully designed marketing brochure will clearly explain the science of Platelet-Rich Plasma injections to your prospective patients. Even though the procedure is extremely simple and easy to explain, your patients might need some visual explanations to quickly decide whether this procedure is for them or not. And nothing else does that job better than this trifold marketing brochure.

Target audience: These brochures target prospective patients seeking treatments for hair loss using the safe and autologous Platelet-Rich Plasma. The brochure explains why PRP Hair Loss Therapy is a good fit for both men and women.

Why You Should Use Marketing Brochures

Your clinic or hospital need printed sales literature for two reasons:

1. **Credibility:** People expect professionalism in everything you do. This includes the way you communicate the value of Platelet-Rich Plasma to your clients. They are more likely to believe what you're saying if you back up what you're saying with printed brochure of some sort.
2. **Time-saving:** A brochure saves you time – it makes educating your prospective patients a breeze. With excellent visuals, a brochure adds a physical dimension to the concept you're explaining. It tells your prospect the key aspects of Platelet-Rich Plasma in just seconds.

Like Hiring A Smart Marketing Assistant

DrPRP USA is a trusted veteran who has been helping Platelet-Rich Plasma practitioners like you to scale their services reliably and profitably for years. This is why most of our clients trust us with their marketing services. When you choose our marketing brochures, it is like hiring a smart marketing assistant that will instantly position you as a top notch provider in the field. This is the least expensive option that gives you the most leverage in your in-office marketing.

Full Specifications

Specification	TriFold Brochure
Product:	Brochures
Variation:	For hair regeneration
Size:	8.5" x 11"
Paper Type:	10 pt. Cardstock Gloss
Folding:	Tri-Fold/Letter Fold (with scoring)
Printed Side:	Outside and Inside
In Sets Of:	100

PRP Therapy Marketing Brochure – Sexual Regeneration



Specifically Designed For Sexual Regeneration Clinics

This beautifully designed marketing brochure will clearly explain the science of Platelet-Rich Plasma injections to your prospective patients. Even though the procedure is extremely simple and easy to explain, your patients might need some visual explanations to quickly decide whether this procedure is for them or not. And nothing else does that job better than this trifold marketing brochure.

Target audience:

These target prospective patients seeking treatments for (in case of women) improved lubrication, sexual sensitivity and intensity of orgasm as well as for urinary stress incontinence and (in case of men) increased firmness of erection, sexual stamina, sensation, pleasure and even correction of penis defects.

Why You Should Use Marketing Brochures

Your clinic or hospital need printed sales literature for two reasons:

1. **Credibility:** People expect professionalism in everything you do. This includes the way you communicate the value of Platelet-Rich Plasma to your clients. They are more likely to believe what you're saying if you back up what you're saying with printed brochure of some sort.
2. **Time-saving:** A brochure saves you time – it makes educating your prospective patients a breeze. With excellent visuals, a brochure adds a physical dimension to the concept you're explaining. It tells your prospect the key aspects of Platelet-Rich Plasma in just seconds.

Like Hiring A Smart Marketing Assistant

DrPRP USA is a trusted veteran who has been helping Platelet-Rich Plasma practitioners like you to scale their services reliably and profitably for years. This is why most of our clients trust us with their marketing services. When you choose our marketing brochures, it is like hiring a smart marketing assistant that will instantly position you as a top notch provider in the field. This is the least expensive option that gives you the most leverage in your in-office marketing.

Full Specifications

Specification	TriFold Brochure
Product:	Brochures
Variation:	For sexual regeneration
Size:	8.5" x 11"
Paper Type:	10 pt. Cardstock Gloss
Folding:	Tri-Fold/Letter Fold (with scoring)
Printed Side:	Outside and Inside
In Sets Of:	100

PRP Therapy Marketing Brochure – Skincare



Specifically Designed For Skincare Clinics

This beautifully designed marketing brochure will clearly explain the science of Platelet-Rich Plasma injections to your prospective patients. Even though the procedure is extremely simple and easy to explain, your patients might need some visual explanations to quickly decide whether this procedure is for them or not. And nothing else does that job better than this trifold marketing brochure.

Target audience:

These target prospective patients seeking treatments for wrinkle reduction, eye bag and dark circle reduction, skin rejuvenation, rosacea reduction, scar reduction, fine lines and sagging around your mouth, cheeks, and eyes, skin tone correction, and hair loss.

Why You Should Use Marketing Brochures

Your clinic or hospital need printed sales literature for two reasons:

1. **Credibility:** People expect professionalism in everything you do. This includes the way you communicate the value of Platelet-Rich Plasma to your clients. They are more likely to believe what you're saying if you back up what you're saying with printed brochure of some sort.
2. **Time-saving:** A brochure saves you time – it makes educating your prospective patients a breeze. With excellent visuals, a brochure adds a physical dimension to the concept you're explaining. It tells your prospect the key aspects of Platelet-Rich Plasma in just seconds.

Like Hiring A Smart Marketing Assistant

DrPRP USA is a trusted veteran who has been helping Platelet-Rich Plasma practitioners like you to scale their services reliably and profitably for years. This is why most of our clients trust us with their marketing services. When you choose our marketing brochures, it is like hiring a smart marketing assistant that will instantly position you as a top notch provider in the field. This is the least expensive option that gives you the most leverage in your in-office marketing.

Full Specifications

Specification	TriFold Brochure
Product:	Brochures
Variation:	For skin rejuvenation
Size:	8.5" x 11"
Paper Type:	10 pt. Cardstock Gloss
Folding:	Tri-Fold/Letter Fold (with scoring)
Printed Side:	Outside and Inside
In Sets Of:	100

PRP Therapy Marketing Brochure – Sports Medicine



Specifically Designed For Sports Medicine Clinics

This beautifully designed marketing brochure will clearly explain the science of Platelet-Rich Plasma injections to your prospective patients. Even though the procedure is extremely simple and easy to explain, your patients might need some visual explanations to quickly decide whether this procedure is for them or not. And nothing else does that job better than this trifold marketing brochure.

Target audience:

These target prospective patients seeking treatments for Achilles Tendonitis, Rotator Cuff, Tennis elbow, MCL Tear, Meniscus Tear, Plantar Fasciitis, Patellar Tendonitis, ACL Tear, Back Pain, Lower Back Pain, Degenerative Disc Disease or similar musculoskeletal healing.

Why You Should Use Marketing Brochures

Your clinic or hospital need printed sales literature for two reasons:

1. **Credibility:** People expect professionalism in everything you do. This includes the way you communicate the value of Platelet-Rich Plasma to your clients. They are more likely to believe what you're saying if you back up what you're saying with printed brochure of some sort.
2. **Time-saving:** A brochure saves you time – it makes educating your prospective patients a breeze. With excellent visuals, a brochure adds a physical dimension to the concept you're explaining. It tells your prospect the key aspects of Platelet-Rich Plasma in just seconds.

Like Hiring A Smart Marketing Assistant

DrPRP USA is a trusted veteran who has been helping Platelet-Rich Plasma practitioners like you to scale their services reliably and profitably for years. This is why most of our clients trust us with their marketing services. When you choose our marketing brochures, it is like hiring a smart marketing assistant that will instantly position you as a top notch provider in the field. This is the least expensive option that gives you the most leverage in your in-office marketing.

Full Specifications

Specification	TriFold Brochure
Product:	Brochures
Variation:	For sports medicine/pain care
Size:	8.5" x 11"
Paper Type:	10 pt. Cardstock Gloss
Folding:	Tri-Fold/Letter Fold (with scoring)
Printed Side:	Outside and Inside
In Sets Of:	100

Training

Online Training for Cosmetic PRP



This course qualifies for up to 7.5 CME Credit Hours.

This is an online video course for PRP-Enhanced Facelift and other cosmetic PRP procedures with detailed instructions for PRP Facial with Micro-needling.

Included in the course are complete protocols, patient consents & forms for:

- PRP-ENHANCED FACELIFT
- PRP-ENHANCED FACIAL with Expanded Microneedling Training Section
- PRP HAIR RESTORATION
- PRP BREAST REJUVENATION
- PRP HAND REJUVENATION
- PRP SCAR REJUVENATION

All with complete treatment protocols, literature citations, and customizable consent and office forms for you to add these amazing services to your practice.

PRP Everything Course



This is a hands-on non-accredited course designed to expose you to everything you can do with medical grade PRP.

This is a hands-on non-accredited course designed to expose you to everything you can do with medical grade PRP. Didactic portion in the morning. Hands on in the afternoon. The course is from 9:00am to 5:00pm with lunch around 12:30pm. The course is held at

3727 Greenbriar
Suite 103
Stafford, Texas 77477

This course is limited to 3 students per day as the clinic area is small. Models should arrive around 1:30pm if you are bringing your own model.

Course Objectives:

- Learn the science behind PRP and understand how the growth factors work
- Learn how to produce the different kinds of PRP (different concentrations, RBC and WBC Free)
- Learn the difference between PRP, Platelet Lysate, Platelet Release, PRF, and PRFM
- Learn the different application/injection techniques for Hair Restoration, Facial Rejuvenation, and Ophthalmic Applications.
 - Manual injections
 - Micro Needling
 - Auto Injection Unit
- You will be exposed to orthopedic applications and Sexual Wellness applications during the didactic portion of the course (If interested, no hands on for this section).
- You will learn anesthesia for hair restoration and facial rejuvenation

Appendix

Centrifuge CM-7S

Advanced technology



- SkySpin™ patented motor controller.
- Sensorless Accu-Logic architecture
- Digital speed and balance controller.
- Increased durability.
- Smooth, noiseless and non-heating operation.



Advanced interface



Major control buttons: "Start/Stop" and "Open" are comfortably located right underneath the lid handle. No matter right or left handed user can always reach the control buttons with a thumb.



Large colorful LCD display makes navigation and settings very simple and fast. All the settings are displayed simultaneously which is very convenient.



Easily accessible settings menu allows additional fine tuning. User can adjust display brightness and sound volume to insure maximum comfort.



Low noise
and heating



Lid lock



Service free
drive

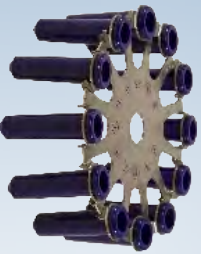


Rotor imbalance
sensor

TECHNICAL SPECIFICATIONS

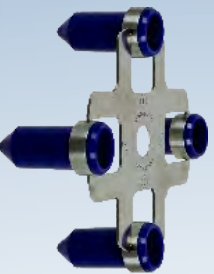
Rotor rotation speed	RPM	100 - 3500
Timer	min	1 - 99
Maximum centrifugal force	RCF	2300
Brake levels		6
Working range of temperatures	°C	from +10 up to +40
Relative air moisture at 20 °C	%	80
Voltage and frequency	V, Hz	100 - 240V, 50/60Hz
Maximal consumable power	W	250
Size of the device (L x W x H)	mm	430 x 410 x 220
Weight	kg	12.6

Rotors for centrifuge CM-7S



ROTOR 6M

Universal rotor for 12 adapters.
Maximal volume of compatible test tubes: 12 ml.
Maximal sizes of the applied test tubes: (D x L) 16.8 x 115mm.
Top speed: 3500 rpm.



ROTOR 6M.01

Universal rotor for 4 adapters.
Maximal volume of compatible test tubes: 50 ml.
Maximal sizes of the applied test tubes: (D x L) 30 135 mm.
Top speed: 3500 rpm.



ROTOR 6M.02

Universal rotor for 24 adapters.
Maximal volume of compatible test tubes: 12 ml.
Maximal sizes of the applied test tubes: (D x L) 16.8 115 mm.
Top speed: 3500 rpm.
Test tubes of 140mm length can be fitted in the external row.



ROTOR 6M.04

Rotor for 2 plates.
Size of applied plates: (W x L x H) 86 x 128 x 20 mm.
Top speed: 2500 rpm.



ROTOR 6M.05

Universal rotor for 12 adapters.
Maximal volume of compatible test tubes: 15 ml.
Maximal sizes of the applied test tubes: (D x L) 16.8 x 140mm.
Top speed: 3500 rpm.



ROTOR 6M.06

Universal rotor for 6 adapters.
Maximal volume of compatible test tubes: 50 ml.
Maximal sizes of the applied test tubes: (D x L) 30 135 mm.
Top speed: 3500 rpm.

Centrifuge CM-6MT

User-Friendly Operation

Outfitted with a user-friendly, digital control panel; RPM/RCF optional indicator; sound notification; and a digital rotor imbalance sensor; this unit is truly designed with ease-of-use in mind.

Designed For Safety

This centrifuge is cold room and refrigerator safe, and comes equipped with a transparent lid and automatic lid lock for extra convenience and safety.

Rapid Acceleration/Braking System

The CM-6MT has a rotational speed of up to 3500 RPM, and comes with a highly responsive rapid acceleration/braking system.

Braking levels Stopping time from 3500 RPM to 0



Compact And Versatile

The CM-6MT, with its exceptionally slim design, is one of the most compact and versatile swing-out centrifuges on the market.



Service free drive



Rotor imbalance sensor



Low noise and heating



Lid lock

Most Advanced, Service-Free Drive

Powered by the industry's most advanced, service-free drive and used in labs worldwide, the CM-6MT has proven to be an incredibly versatile, long-lasting, extremely quiet centrifuge that would make an outstanding addition to your laboratory.

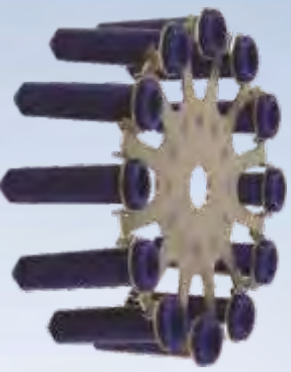
Wide selection of rotors

This multifaceted unit can accommodate 6 rotor options: 12 test tube/15 ml volume, 4 test tube/50 ml volume, 24 test tube/15 ml volume, and a rotor that can accommodate two 96-well plates ranging in sizes up to 96-deep well plates with 2 ml volume per well.

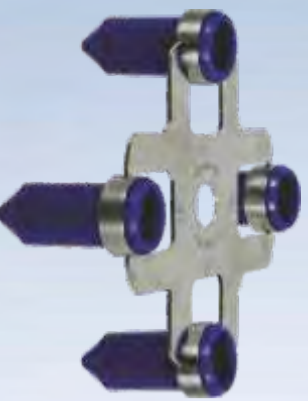
TECHNICAL SPECIFICATIONS

Rotor rotation speed	RPM	100 - 3500
Timer	min	1 - 99
Maximum centrifugal force	RCF	2300
Brake levels		6
Working range of temperatures	°C	from +10 up to +40
Relative air moisture at 20 °C	%	80
Voltage and frequency	V,Hz	100 - 240V; 50/60Hz
Maximal consumable power	W	250
Size of the device (L x W x H)	mm	430 x 410 x 220
Weight	kg	12.6

Rotors for centrifuges CM-6MT & CM-7S



ROTOR 6M
Universal rotor for 12 adapters.
Maximal volume of compatible test tubes: 12 ml.
Maximal sizes of the applied test tubes: (D x L) 16.8 x 115mm.
Top speed: 3500 rpm.



ROTOR 6M.01
Universal rotor for 4 adapters.
Maximal volume of compatible test tubes: 50 ml.
Maximal sizes of the applied test tubes: (D x L) 30 x 135 mm.
Top speed: 3500 rpm.



ROTOR 6M.02
Universal rotor for 24 adapters.
Maximal volume of compatible test tubes: 12 ml.
Maximal sizes of the applied test tubes: (D x L) 16.8 x 115 mm.
Top speed: 3500 rpm.
Test tubes of 140mm length can be fitted in the external row.



ROTOR 6M.04
Rotor for 2 plates.
Size of applied plates: (W x L x H) 86 x 128 x 20 mm.
Top speed: 2500 rpm.



ROTOR 6M.05
Universal rotor for 12 adapters.
Maximal volume of compatible test tubes: 15 ml.
Maximal sizes of the applied test tubes: (D x L) 16.8 x 140mm.
Top speed: 3500 rpm.



ROTOR 6M.06
Universal rotor for 6 adapters.
Maximal volume of compatible test tubes: 50 ml.
Maximal sizes of the applied test tubes: (D x L) 30 x 135 mm.
Top speed: 3500 rpm.

HORIZON

HORIZON 6, 12, & 24 FLEX PROGRAMMABLE ROUTINE CENTRIFUGES

Satisfy the most diverse processing requirements with HORIZON Flex routine centrifuges. Customize settings and check every detail on the digital display, or pre-program up to 10 cycles.

Easy to Use

The fully digital display makes it easy to customize cycle parameters on the fly, or set and select one of the 10 programmable cycles. Spin 75-100 mm (3-10 mL) tubes without switching tube holders or adding cushions.

Easy to Monitor

Process samples more efficiently with HORIZON's LED lid lighting: off when the centrifuge is ready to load, on when running, and flashing at the end of cycle. Once the unit is started, the display shows remaining spin time.

Built to Last

No routine maintenance. Brushless motor, engineered composite components.

Engineered for Safety

Protect your lab with imbalance detection and a shatterproof lid which can only be opened when the rotor is stopped, even if the unit loses power.

A Great Value

Unbeatable quality for any budget. Each HORIZON centrifuge is ready to run with horizontal rotor, universal tube holders, and 2-year warranty included in the affordable price.



Tube Capacity	6, 12, or 24 (75-100 mm/3-10 mL)
Applications	Chemistry, Coag, PPP, PRP, Urine
Centrifugation	Horizontal (max 2,000 xg/3,800 RPM)
Included	Rotor, buckets and tube holders
Warranty *	2 years (rotor: lifetime warranty)

* *Extended warranty available*



HORIZON 6 Flex



HORIZON 12 Flex



HORIZON 24 Flex

Designed, built, and supported in the USA

HORIZON 6, 12, & 24 FLEX



Free 30-Day Evaluation (U.S. Only)

Part Numbers	HORIZON 6 Flex	HORIZON 12 Flex	HORIZON 24 Flex
Centrifuge	00-376-009-000	00-383-009-000	00-384-009-000
Replacement 75-100 mm tube holder/Bucket	7713079 (1 qty)	7713079 (1 qty)	7713023 (1 qty)
50 mL tube holder			7713037
Cap			7713035
SmartView Platform	00-079-009-001		
1 yr Warranty Extension	03-0-0007-0001	03-0-0007-0001	03-0-0007-0001
2 yr Warranty Extension	03-0-0007-0002	03-0-0007-0002	03-0-0007-0002
3 yr Warranty Extension	03-0-0007-0006	03-0-0007-0006	03-0-0007-0006
Custom Settings *	00-100-100-101	00-100-100-101	00-100-100-101

* Add this part number to your centrifuge order to have your custom validated cycles pre-programmed at the factory

Specifications	HORIZON 6 Flex	HORIZON 12 Flex	HORIZON 24 Flex
Sound Level	64 dBA	56 dBA	59 dBA
Max G-Force/Speed	2,000 xg @ 3,800 RPM	2,000 xg @ 3,700 RPM	2,000 xg @ 3,400 RPM
Dimensions (W x D x H)	12 x 14 x 9 in 30 x 36 x 23 cm	13 x 15 x 9 in 33 x 38 x 23 cm	15 x 17 x 9 in 38 x 43 x 23 cm
Weight	12 lbs (5.4 kg)	30 lbs (13.7 kg)	39 lbs (17.7 kg)
Power	95 to 253 V – 50/60 Hz		

FDA LISTED



RoHS
Compliant



ISO13485
certified



druckerdiagnostics.com
sales@druckerdiagnostics.com

+1-866-265-1486 (U.S. only)
+1-814-692-7661

