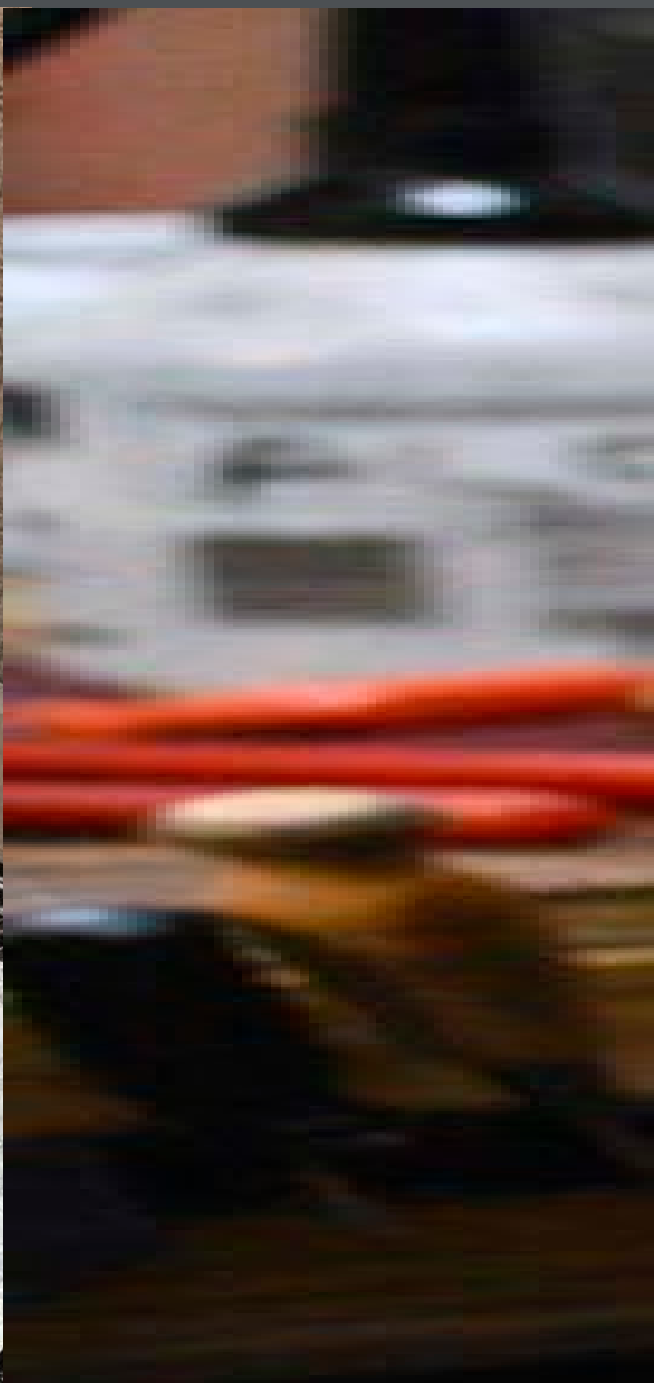


DRIVING THE CIRCULAR ECONOMY IN IOSCO COUNTY THROUGH RECYCLING

Develop Iosco, September 2022



WASTE NOTHING.

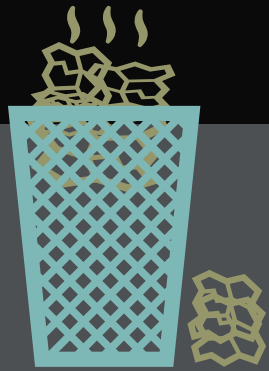




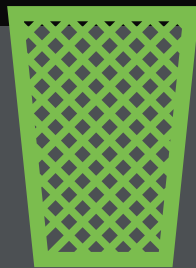
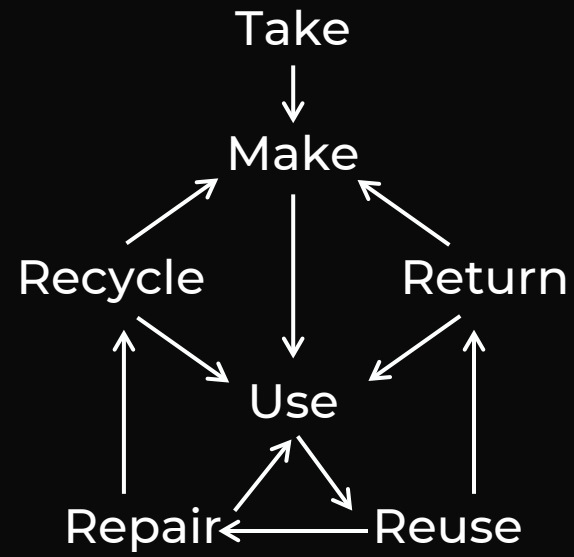
**WASTE
NOTHING
CULTURE**

Linear Economy

Take
↓
Make
↓
Use
↓
Waste



Circular Economy



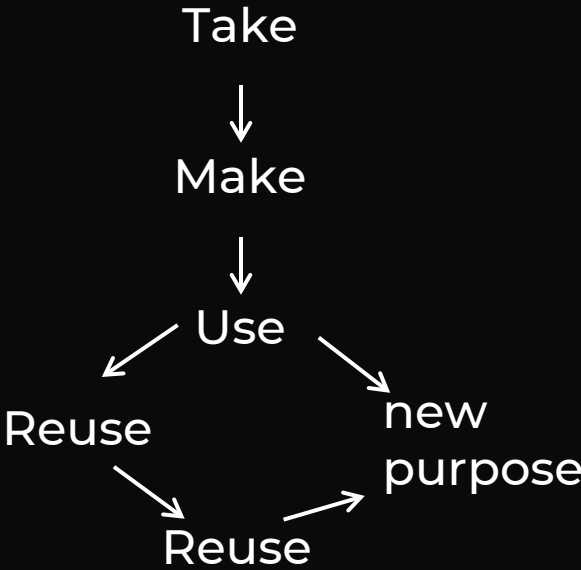
PROGRESSION OF CONSUMPTION AND 'WASTE'

Grandma's Kitchen

World Population: 7.95 Billion

Single Use Revolution

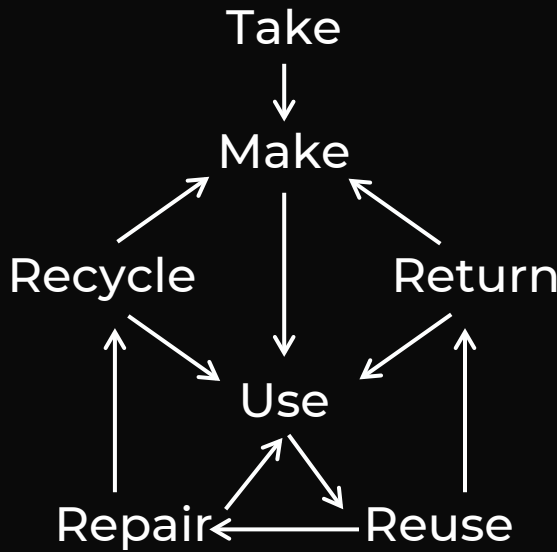
Waste Nothing Culture



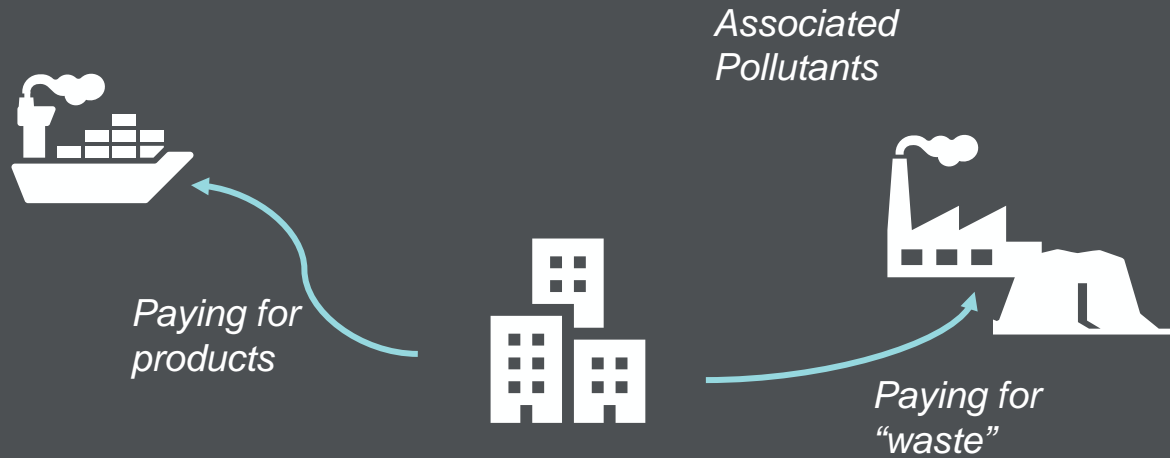
Linear Economy



Circular Economy



KEEPING VALUE IN COMMUNITIES



Value leaving communities



Value building communities

Collection



End Market



Processing





MICHIGAN'S RECYCLING OPPORTUNITY



Growing access for recycling is supporting feeding value back to the economy



Michigan's recycling-based economy is well-positioned for growth



End markets are dependent on strong recycling supply chain



ECONOMIC BENEFITS OF REACHING 45% IN MICHIGAN

If Michigan's recycling rate tripled, the recycling, reuse, and recovery industry would total...

138K

Jobs in
Michigan

\$9.0B

Total Annual
Labor Income

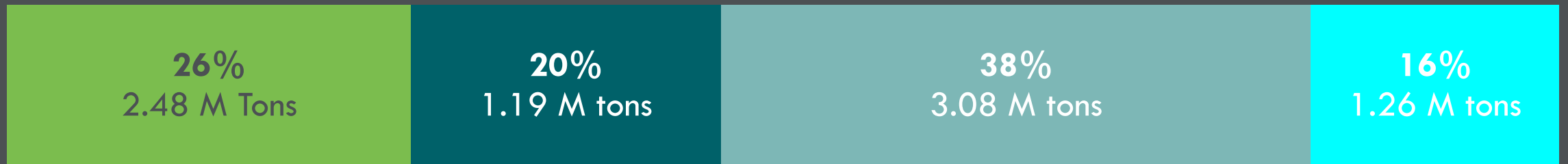
\$33.8B

Economic
Output

TONS OF MSW DISPOSED IN MICHIGAN

MSW DISPOSAL STREAM

Total 8.012 Million Tons



Mixed Recyclables

Other Recyclables

Organics & Compostables

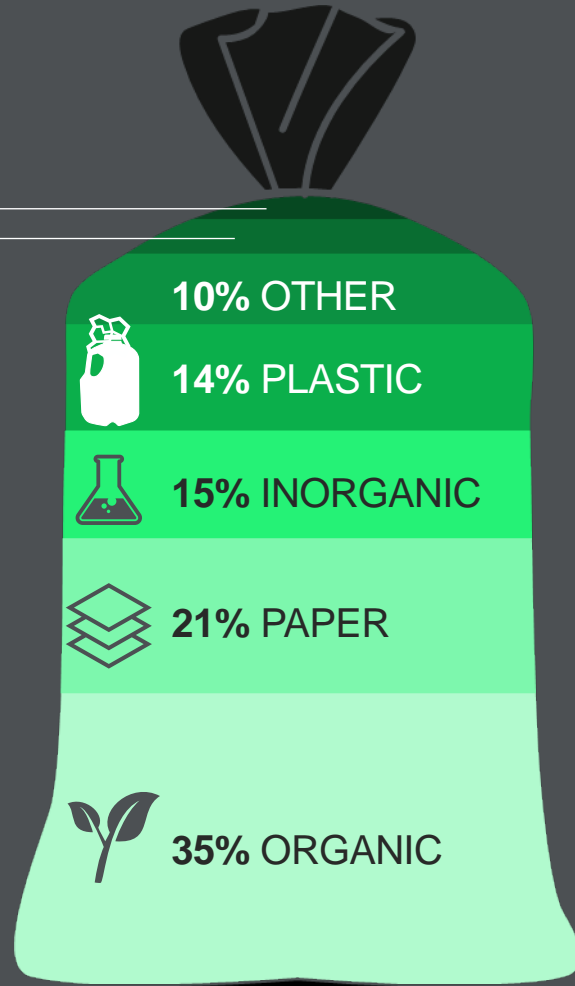
Non-Recoverable



2% GLASS

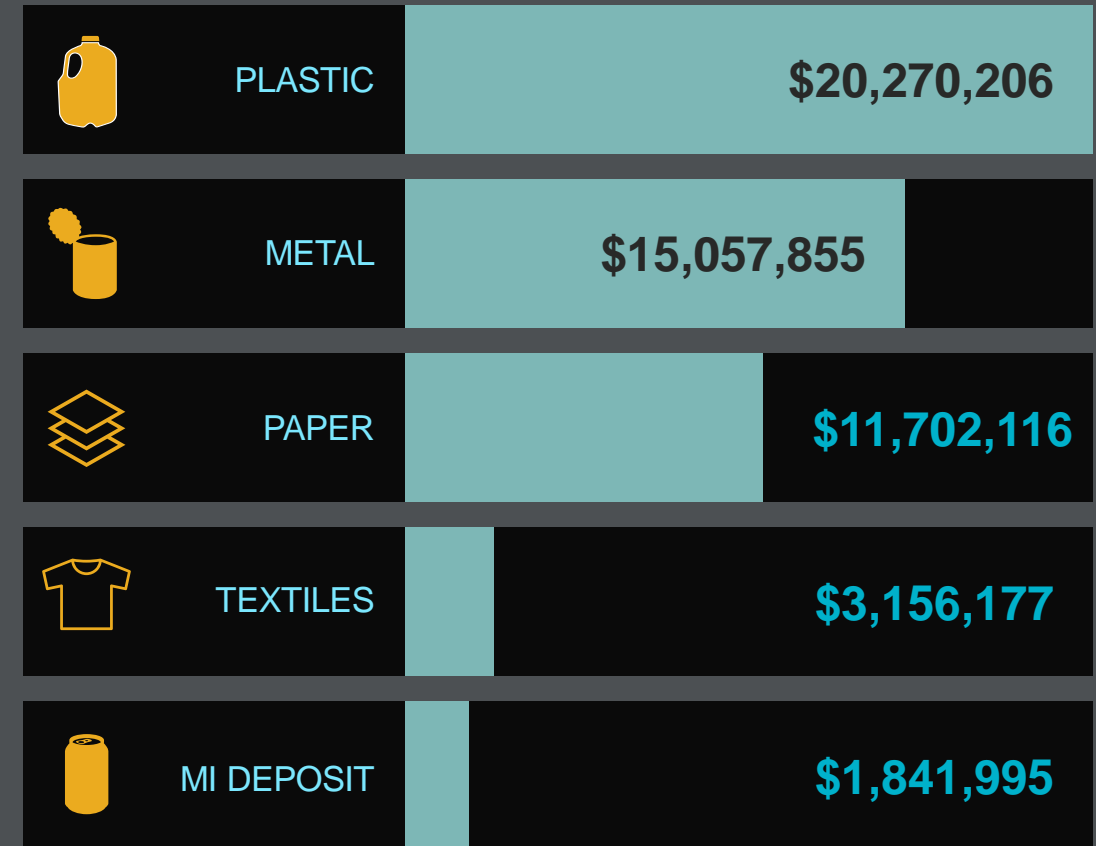


4% METAL



What we throw away in West Michigan:

What the trash we throw away is worth:



SOURCE: Kent County, reimagetrash.org









There are great solutions



Reuse

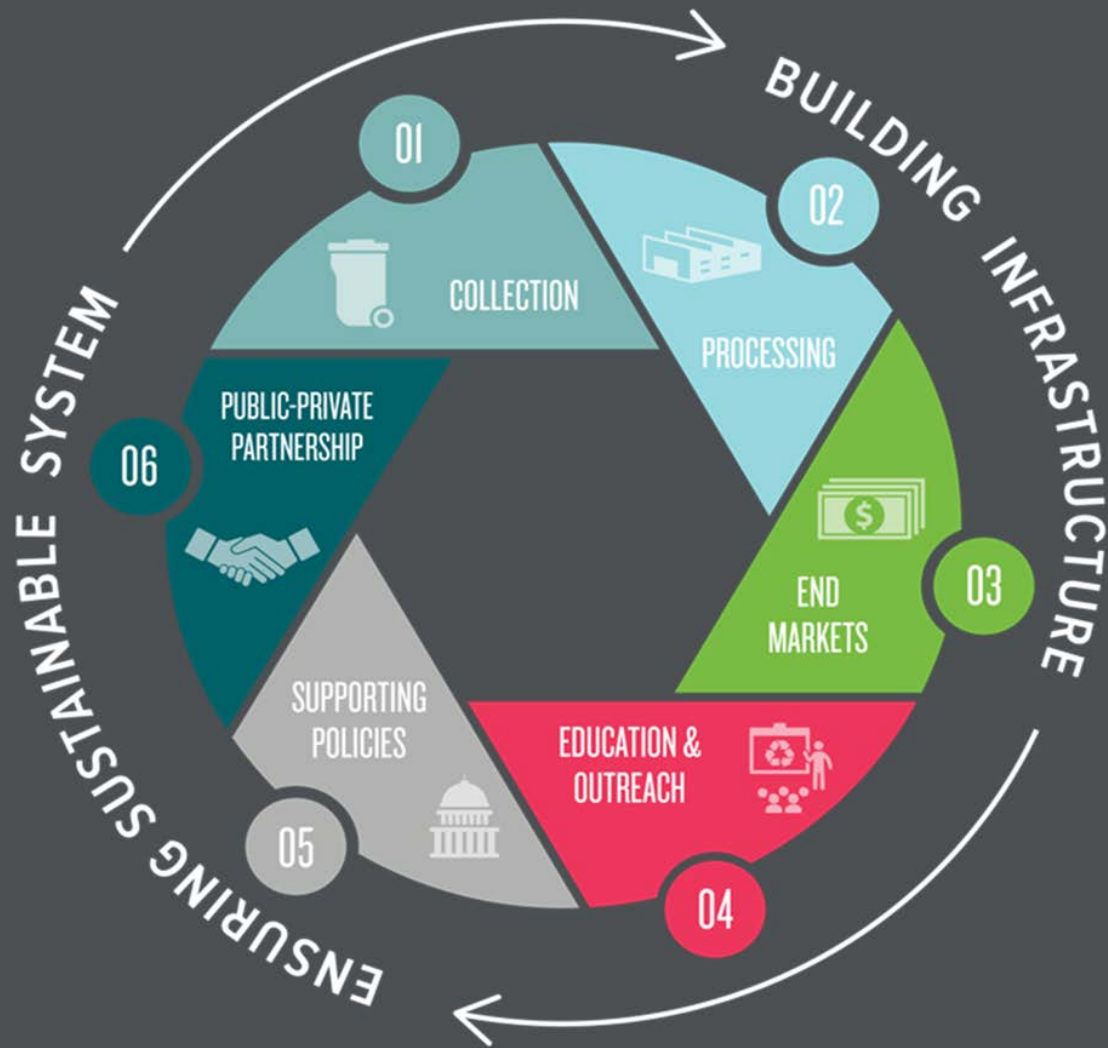


Recover

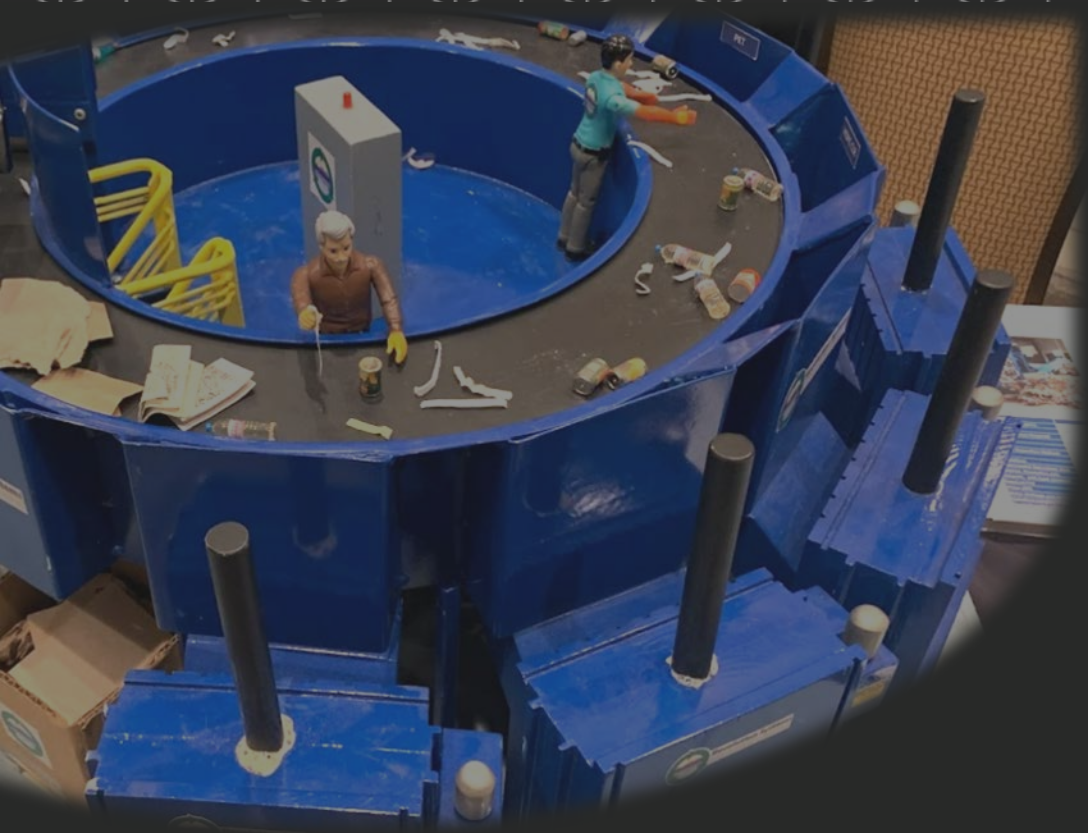


Recycle

ASSESSING REGIONAL SYSTEMS AND DEVELOPING ALL 6 ELEMENTS



- 01 **COLLECTION:**
Collect and Capture
- 02 **PROCESSING:**
Efficient processing multiplies results
- 03 **END MARKETS:**
Managing the tools for success
- 04 **EDUCATION & OUTREACH:**
Best practices, best results
- 05 **SUPPORTING POLICIES:**
Local action creates results
- 06 **PUBLIC-PRIVATE PARTNERSHIPS:**
Optimizing P3 opportunities



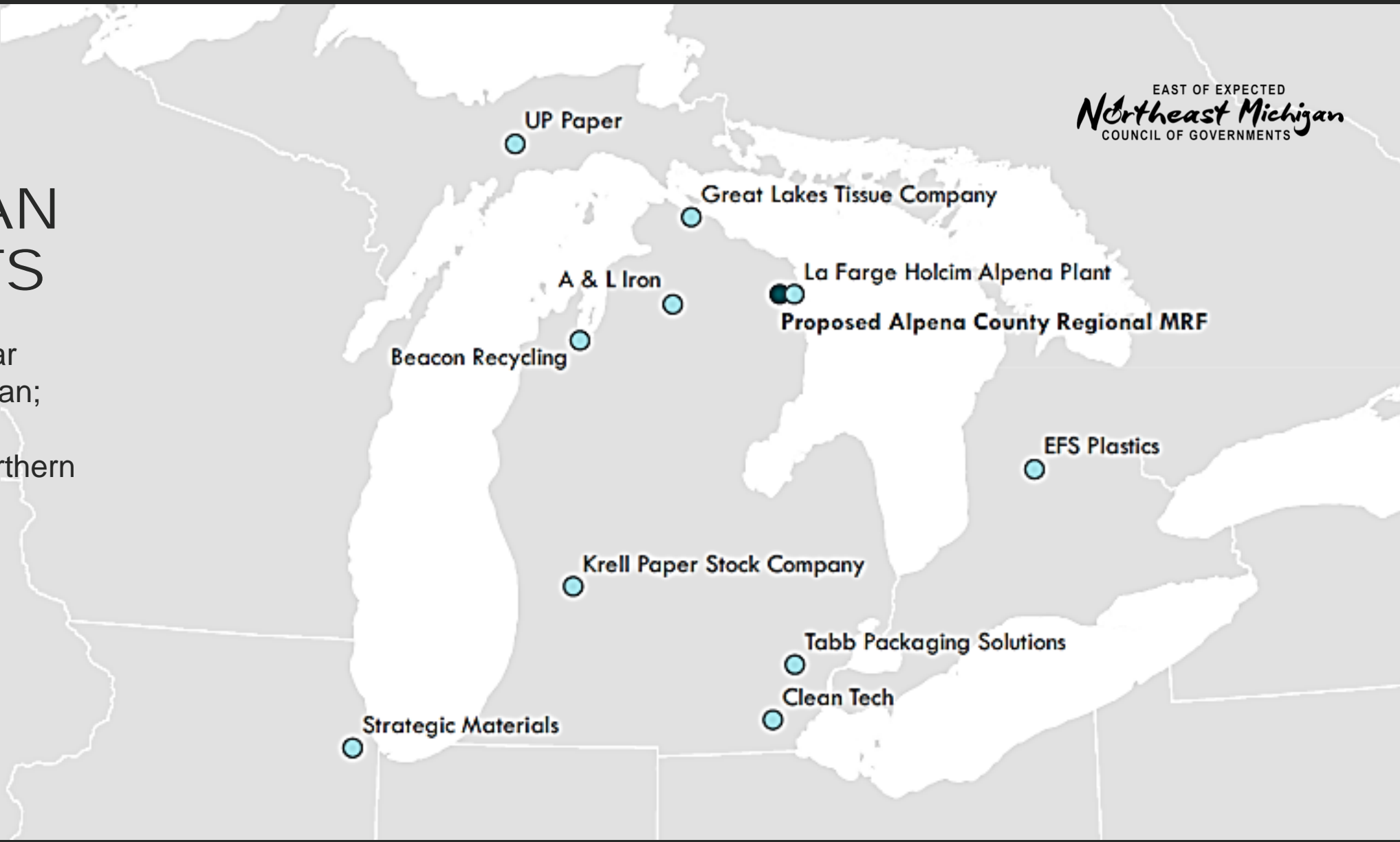
DUAL STREAM RECYCLING FACILITY IN PLANNING

Creating a Regional Recycling Facility

- Planned siting at Alpena Airport
- 5,000+ ton per year capacity, serving ~30k+ households
- Benefit region with jobs and resources back into communities
- Enable cost effective recycling drop offs in participating counties
- Public sector owned
- \$6M Capital Budget; almost \$4.2M to date

MICHIGAN MARKETS

Promoting a circular economy in Michigan; driving economic development in northern Michigan region



END MARKETS BRINGING VALUE TO RECYCLING SUPPLY CHAIN



Residential Recyclable material collected and transported



Material sorted and baled



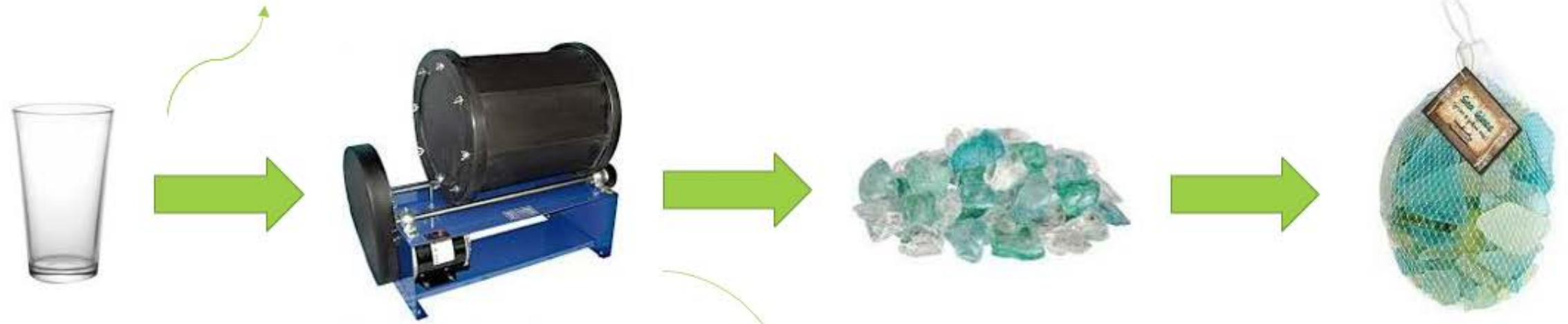
Bales processed into new usable material



Products with recycled material sold back into the market



END MARKETS BRINGING VALUE TO RECYCLING SUPPLY CHAIN



Unsold Donated Glass

Tumble

Sea Glass

Packaged/Retail Sales

END MARKETS BRINGING VALUE TO RECYCLING SUPPLY CHAIN



Hard to recycle plastics
(laundry baskets, toys, etc)



New product for storm
water management +



SOLUTIONS FOR 'WASTE' WITHOUT THE POLLUTION ... *AND FUNDING TO HELP SUPPORT!*

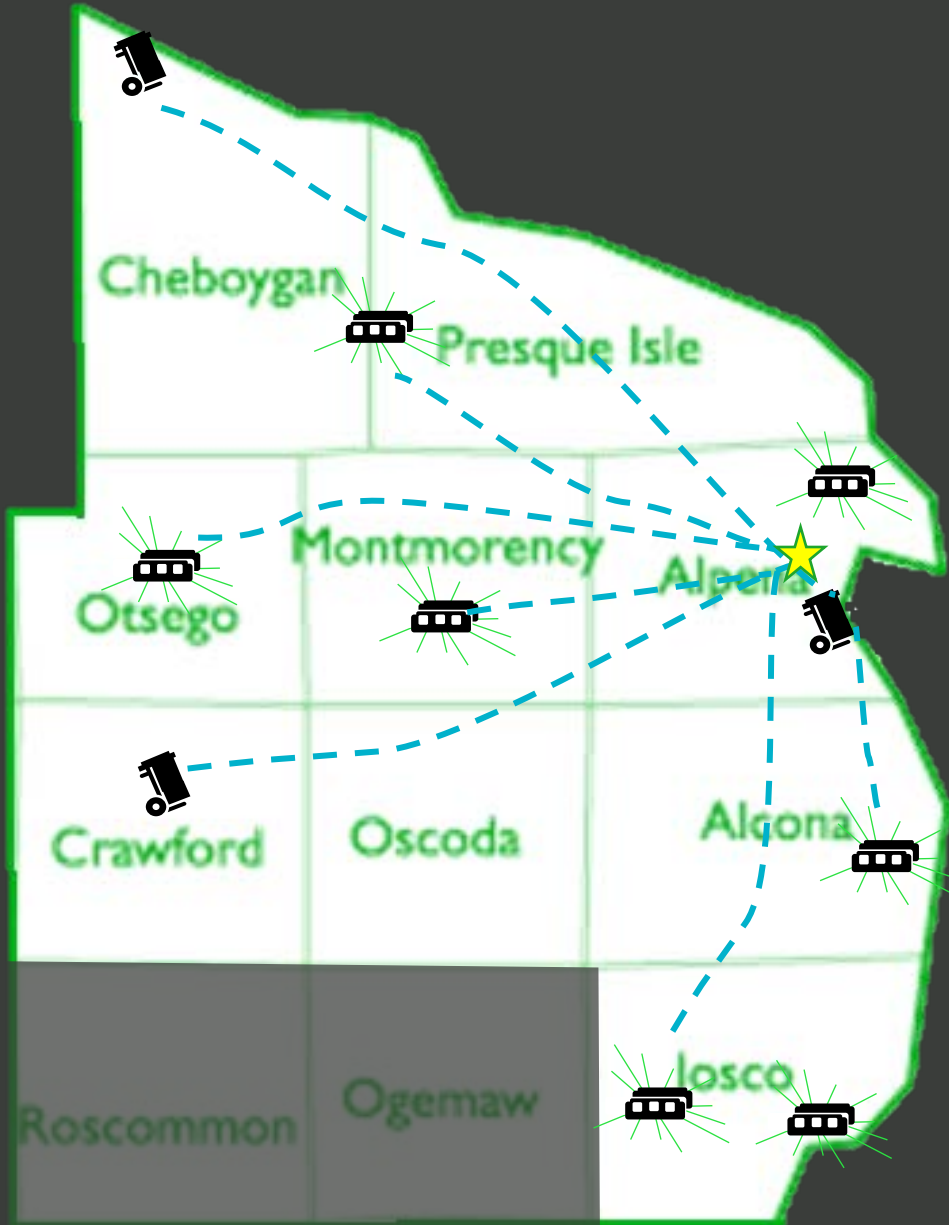


Grant Information

[PDF](#) [2022 Cleanup Grant Recipients](#)

[2022 Scrap Tire Cleanup Grant APPLICATIONS](#)

[2022 Scrap Tire Market Development APPLICATION](#)



BUILDING A REGIONAL NETWORK

Regional Alpena MRF allows for cost-effective expansion of community drop-off and curbside collection programs

ENABLING COST EFFECTIVE RECYCLING DROP OFFS ACROSS THE COUNTY



What it can look like:

- More drop-sites
- More materials accepted
- County-wide program
- Common Messaging
- Reaching more residents, businesses
- Economic development opportunities
- Economies of scale collaborating regionally

REGIONAL COMPREHENSIVE DROP-OFF OPPORTUNITY



- Electronics
- Tires
- Mattresses
- HHW / Hazardous Recyclables / Household Chemicals
- Scrap Metal
- Batteries
- Large bulky plastics
- Film Plastics
- CFL's



OPPORTUNITIES TO ADDRESS FOOD WASTE



New Businesses or public programs to collect food scraps



Permitting composting sites to accept food waste for Local Processing



Processed compost able to be sold locally



MATERIALS MANAGEMENT COUNTY ENGAGEMENT GRANTS

PURPOSE

MMCE grants encourage counties and regions to begin thinking about **materials management**, instead of solid waste management, in preparation for changes in the Part 115 amendments and/or a plan update.



Helping Counties ...

MMCE GRANTS BENEFITS

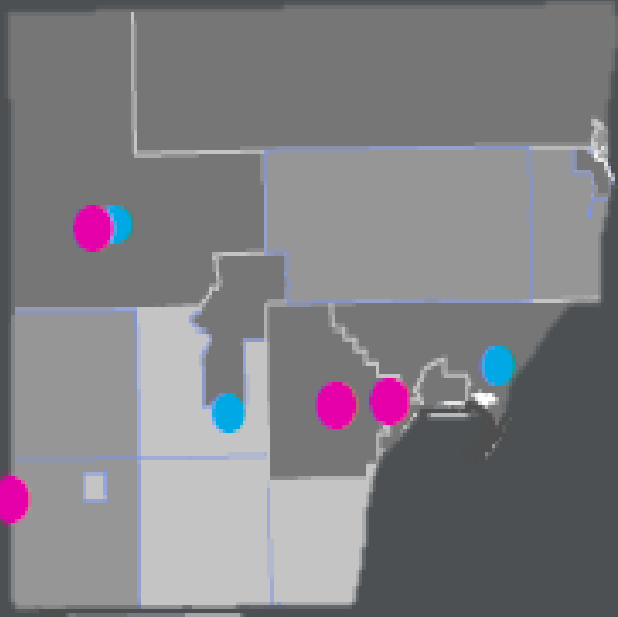
- Create **partnerships** within regions and counties
- Understand **current** materials management **gaps** and **challenges**.
- Highlight **future** changes to planning process
- Assist with the **development of future** materials management programs and infrastructure.



ANTICIPATED STANDARDS FOR MICHIGAN...

- County Materials Management Plans developed to update and replace Solid Waste Management plans – focus on material recovery instead of landfilling
- 90% of dwellings with access to curbside recycling in urban areas and municipalities with more than 5,000 residents
- At least one drop-off recycling location for each 10,000 residents in counties with less than 100,000 population

CONSIDERING WAYS TO MEETING COMMUNITY NEEDS



- Current Drop-offs
- Potential Drop-offs

Exploring...

- Is current access enough?
- Is everyone able to use sites?
- What can make drop-off sites convenient?
- How can recycling be funded?
- What materials could be collected?
- Who are potential collaborators or partners?
 - 4H? Conservation Districts? Schools? DNR?

NOW IS THE TIME

\$15 MILLION EGLE RENEW MICHIGAN FY23 BUDGET

Engagement	\$3.6 Million
Collection/Sortation/Reprocessing/Quality	\$6.25 Million
Market Development	\$2.3 Million
Cross-Cutting Initiatives and Programs	\$2.4 Million
Program administration	\$1.4 Million

LEVERAGE FUNDING OPPORTUNITIES FOR YOUR COMMUNITIES



NOW IS THE TIME

VARIOUS FUNDING OPPORTUNITIES AND RESOURCES

- EGLE Recycling Market Development Grants
- EGLE Recycling Infrastructure Grants
- E-Waste Opportunities
- Closed Loop Partners Loans
- The Recycling Partnership programs
- NextCycle Michigan Partner Network
- NextCycle Michigan Accelerator Program
- NextCycle Michigan Data and Resources
- Scrap Tire funds
- Infrastructure Investment and Jobs Act (IIJA)
- Energy Efficiency and Conservation Block Grant Program (EECBG)
- MMCE Grants
- EDA funding



STEPS TO CONSIDERING, SCALING EFFORTS AND IMPLEMENTING

- Collaboration between communities and counties (MMCE Grant): Identifying needs and options to fill gaps
- Considering funding pathways to support activities (millages, etc)
- Collaborating with partners (trade associations, schools, 4H programs)
- Understand resident needs (surveys or other engagements)
- Educating the public on benefits
- Building political support

BENEFITS OF COLLABORATION

- Efficiencies of Scale
- Economies of Scale
- Program Resiliency
- Consistent messaging across communities
- Comprehensive recovery programs more attainable
- Improved funding landscape
- Communities want to collaborate!

Ref. CLOSUP Survey



Swimmy - Storybook and art by Leo Leoni

COLLABORATION PLANNING FOR MATERIALS MANAGEMENT CAN ALLOW YOU TO DECIDE AND CONTROL...

- What works for your county and residents
- Where material is going – recycling documented, full transparency
- Keep material in your region and support feeding material back to the local economy
- Benefit from economies of scale
- Keep your community clean





SEASON OF
INNOVATION
FALL INTO RECYCLING

REGISTER TODAY!

NEXTCYCLE TEAM SHOWCASE

— **OCTOBER 6 - 7, 2022** —



HOSTED WITH THE MICHIGAN RECYCLING COALITION

REGIONAL RECYCLING WORKSHOP

NEMCOG + IOSCO: MATERIALS MANAGEMENT COUNTY ENGAGEMENT GRANT PROJECT



- Friday, October 14
 - University Center Gaylord
 - 80 Livingston Blvd
 - Gaylord, Michigan
-
- 10 am – 3 pm
-
- Join Iosco County leadership in furthering the process towards recycling in Iosco County! All are welcome. Lunch Provided.



ELISA SELTZER

Senior Consultant

231.838.8032

eseltzer@RECYCLE.COM