



## Silver Stone Buildings

PO Box 214 Turramurra NSW 2074 Australia

Mobile: + 61 412 769 353

email: info@silverstonebuildings.com.au; silversbuildings@gmail.com; jalex888@yahoo.com.au  
https://silverstonebuildings.com.au

## Product Nos

## 1 Steel fabricator steel structure metal building materials for steel project

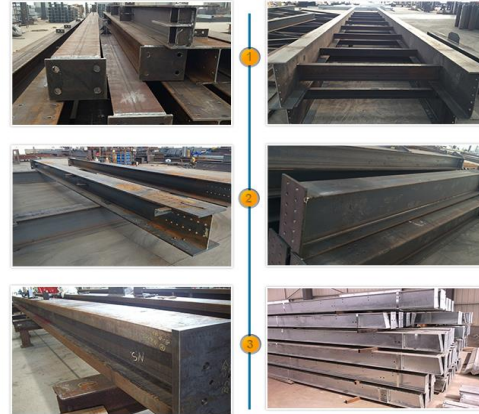
Product name Steel fabricator steel structure metal building materials for steel project  
 Material Mild steel, stainless steel, aluminum, brass  
 Grade SS400, S235JR, A36, Q235B, Q345B, Q460, 45#, 304, 316  
 Standard ISO, GB, JIS, ASTM, ANSI, AISI, DIN, BS  
 Weight 10kgs-20,000kgs

Manufacturing processes  
 Material inspection, material cutting, deburring, bending, assembling, welding,  
 polishing/cleaning, shot blasting, machining, painting, packing, delivery.  
 Heat treatment Normalization, annealing, quenching and tempering (45#)  
 Packing Iron pallets/racks, or as per customer's requirements.  
 Inspection 100% dimension inspection and visual inspection, gas tight test before delivery.  
 Non-destructive testing PT (penetrating testing), MT (magnetic particle testing), UT (ultrasonic testing), RT (radiographic testing)

Software Solid Works, Pro/Engineer, AutoCAD (DXF, DWG), PDF, TIF, IGS, STP etc.  
 Certificates ISO9001:2008, DNV, GL, LR, ABC, BV, NK, KR, CCS.  
 Application Various sizes of vessels, Power stations, power plants, large generators, lift fork, material handling equipment.

## Product Pictures

## FABRICATED STRUCTURAL STEEL



## 2 Fabricated metal plate manufacture processing with holes

Products name Fabricated metal plate manufacture processing with holes  
 Material Cold rolled steel, SECC, SGCC, AIZn alloy coated steel, galvanized steel, Aluminum, Steel, Stainless steel, Brass, Copper, Bronze, etc.

Standard ISO GB JIS ASTM ANSI AISI DIN BS NF BA  
 Process Stamping, welding, CNC, machining, casting, forging, milling, bending, laser cutting etc.

Surface Treatment Powder coating, painting, galvanizing, electro anodising, chrome plating, brushing, polishing, silk-screen, printing

Service Type OEM/ODM  
 Certificate ISO9001:2015  
 Quality Control Computer quality control system  
 Appliance Steel construction, Automatic machine, Medical device, Industrial machine, Automobile, Electric appliance, Aluminum die casting, Pulp equipment, etc.



## 3 Steel fabricator custom steel fabrication welded fabricated steel tube

Product name Steel fabricator custom steel fabrication welded fabricated steel tube  
 Material Mild steel, stainless steel, aluminum, brass  
 Grade SS400, S235JR, A36, Q235B, Q345B, Q460, 45#, 304, 316  
 Standard ISO, GB, JIS, ASTM, ANSI, AISI, DIN, BS

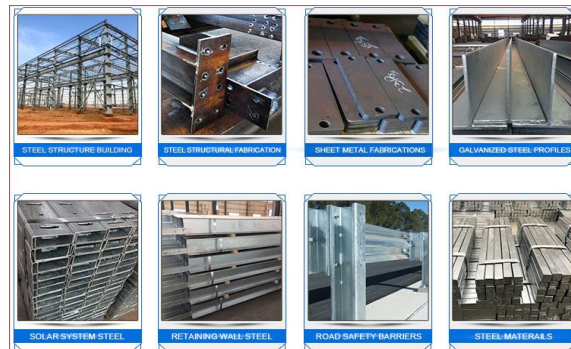
Manufacturing processes  
 Material inspection, material cutting, deburring, bending, assembling, welding,  
 polishing/cleaning, shot blasting, machining, painting, packing, delivery.

Heat treatment Normalization, annealing, quenching and tempering (45#)  
 Packing Iron pallets/racks, or as per customer's requirements.  
 Inspection 100% dimension inspection and visual inspection, gas tight test before delivery.  
 Non-destructive testing PT (penetrating testing), MT (magnetic particle testing), UT (ultrasonic testing), RT (radiographic testing).  
 Certificates ISO9001:2015, DNV, GL, LR, ABC, BV, NK, KR, CCS.



## 4 Steel Materials / Frame and Columns

Steel Structure Building  
 Steel Structural Fabrication  
 Steel Sheet metal fabrication  
 Galvanised Steel profiles  
 Solar Steel system  
 Steel Retaining Wall  
 Road safety barriers  
 Steel Materials



- 5 **Scaffolding**  
 Ringlock scaffolding steel tube: Diameter 48.3mm, Thickness: 2.75mm/3.0mm/3.2mm  
 Ringlock scaffolding steel grade: Q235,Q345 Surface Hot Dip Gal., Electro Gal., Painting  
 Ringlock scaffolding components: Standard, Ledger, Brace, Metal Plank, Ladder, Base jack, Rosette, base collar  
 Ringlock scaffolding rosette : Q235, 10mm thickness  
 Standard with spigot, ledger and brace with forged connect pin



Steel Building Materials  
 Steel Rebars



- 6 **Steel Towers**  
 HVAC Steel Frames  
  
 HV Tower  
 LV Tower  
 Communication Towers



- 7 **Aircraft Steel Hanger**  
 Standard Contract Quote Layout Example  
 Project Name: Aircraft Steel Hanger

Building Size: 30m\*60m\*5m = 1800m<sup>2</sup>

Date:

Item	Picture	Unit	QTY	Unit price(USD)	Amount (USD)	comment
<b>Steel Frame</b>						
Column and Beam		ton	41.4		0.0	Steel Grade :Q345B,Welded H section , producing. sand blasting,painting
Bracing		ton	3.8		0.0	Steel Grade :Q235B,steel pipe(Φ89*3), steel round(Φ20 ), steel angle(L50*4), painting
Roof Purlin		ton	9.9		0.0	Steel Grade :Q235B, C180*70*20*2.5,galvanized
Wall Purlin		ton	6.8		0.0	Steel Grade :Q235B, C180*70*20*2.5,galvanized
<b>Cladding System</b>						
Roof Panel		m <sup>2</sup>	1990.0		0.0	0.5mm+50mmEPS+0.4mm sandwich panel, (970)
Wall Panel		m <sup>2</sup>	930.0		0.0	0.5mm+50mmEPS+0.4mm sandwich panel, (970)
<b>Bolt Accessories</b>						
Anchor Bolts		set	120.0		0.0	Steel Grade :Q235B, M30X900
Expansion Bolts		set	10.0		0.0	M16*150
High Strength Bolts		set	950.0		0.0	Grade 10.9
Ordinary Bolts		set	4200.0		0.0	Galvanized bolt
Accessories		m <sup>2</sup>	2920.0		0.0	Glass adhesive,self-tapping screw and so on
<b>Other Costs</b>						
Flashing		m	620.0		0.0	Steel sheet thickness 0.5mm
Sandwich Panel Sliding Door + Canopy		m <sup>2</sup>	60.0		0.0	size: 4mx15mx1set
Transport and Handling Charge		container	6.0		0.0	Delivery to customer site
Subtotal					0.0	
<b>Total</b>					<b>0.0</b>	

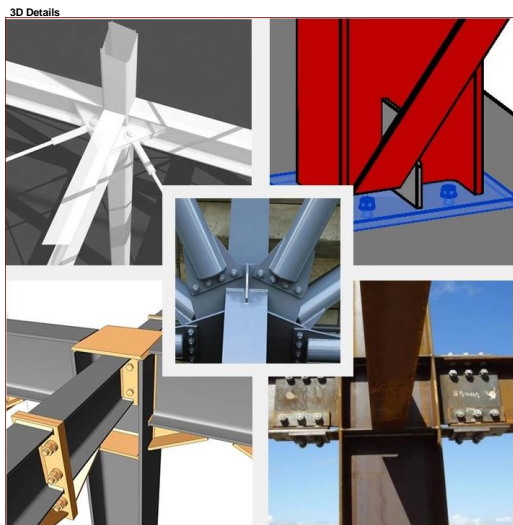


Figure 1 displays nine common structural steel shapes, labeled A through I:

- A:** A stack of I-beams.
- B:** A single I-beam.
- C:** A single L-beam.
- D:** A stack of C-channels.
- E:** A pile of square bars and a bundle of round bars.
- F:** A pile of rectangular bars.
- G:** A stack of H-beams.
- H:** A stack of blue-painted Z-bars.
- I:** A stack of flat plates.

Related Products



End of Document