



# THE SQUEAKS

## PINEY WOOD MODEL A FORD CLUB

**VOLUME 46 - ISSUE 01 ---- JANUARY - 2020**

### Inside This Issue

From the President's Desk.....	02	What's On The Calendar.....	13
Meeting Minutes.....	03	Sunshine Report.....	15
Christmas Party Walden Yacht Club.....	04	National Club.....	16
Remembrance Photo Tour Quilt...	05	Era Fashion -- Hat Fashions.....	18
Service Awards & Victrola Raffle...	06	On The Block.....	24
2019 Membership & Vehicle Roster.....	10	Supporting Our Friends.....	25
Does Your Light Switch Raddle.....	11	PWA Officer(s) & Chairperson(s)...	27
Lady A's Activities.....	12		

**PWA Web Address:** [www.pineywoodmafc.com](http://www.pineywoodmafc.com)

### MOTTO

To promote and stimulate  
the preservation, restoration,  
and maintenance of the  
Model A Ford automobile

### QUALIFICATIONS

Any person sincerely interested in the  
Model A Ford automobile and the  
purpose of this club shall be eligible  
for membership as an active member.

# From The President's Desk

By: Jim Blaszcak

Model A Friends

Happy New Year everyone. I hope that y'all had a wonderful holiday. The Piney Wood Christmas party was an outstanding success again. The weather was magnificent. The decorations were beautiful and everyone enjoyed getting such a lovely gift. My pillow is in its place of honor in the back seat of our Fordor. Many thanks go to Susan Cherry and all those who helped make it such a fun event.

A special Thank You to the outgoing officers for all that they did to make our club such a great organization.

I look forward to a great 2020. As we approach our activities for the year, I want to keep in mind the motto of "Keep It Simple, Make It Fun". Our club's greatest assets are the members. We get enjoyment from our interest in the Model A while experiencing the fellowship of likeminded folks. That's not complicated or difficult to achieve. So, as the Piney Wood Model A Ford Club begins this year's journey, come along and enjoy the drive!

After watching "Horatio's Drive" in Bryan with our Model A friends over the Thanksgiving holiday, I was drawn to the stories of some of the people who contributed to the story. One was author William Least Heat-Moon. He wrote about his 1978 journey around the United States via what he called "Blue Highways". Those are what we call "Model A Roads". The secondary roads that were marked in blue on the old style Rand McNally maps. This quote is from his book:

*"There is nothing we can do that is more American than getting in a car and striking out across country. I think as a nation we can think of few things that draw us more strongly than a piece of roadway heading we know not where. This is the way we grow up, this is the way we enter our history: get in a car and find the country."*

In the first four months, we have two very good tours coming up.

- First, the Sweetheart Tour in February to the Faust Hotel in New Braunfels. What a fantastic weekend it will be. Last year's outing was one of our best tours of the year. Be sure to make your reservations soon so you don't miss out.
- In April we are hosting the Poor Boy Tour 2020 in La Grange, "The Best Little Model A Tour in Texas". We've driven through La Grange on tours over the past few years, but it will be nice to spend some quality time there and enjoy the quaint downtown and many points of interest. Like so many other small towns, their history is rich with stories of Texas history and the people who lived it.

As my mother always said, "Many hands make light work." so if you would like to pitch in with any of our tours, let Robert Bullard or me know. Your help no matter how big or small, will be greatly appreciated.

Happy Motoring



# Meeting Minutes

By: Elaine Bullard, Secretary

## Installation Of 2020 PWA Election Slate By David Teale - President

### **President:**

Jim Blaszczak

### **Vice President & Tour Director:**

Robert Bullard

### **Secretary & Advertising:**

Elaine Bullard

### **Treasurer:**

Frank De Lucia

### **Board of Directors:**

Art Shaddix

Perry Jones

Ron Cherry

Wayne Mason





# PWA Christmas Party Walden Yacht Club On Lake Conroe

Susan & Ron Cherry - Activities Coordinator(s)



Quilt & Pillow(s) Crafted By Susan & Ron Cherry:

Remembrance Photo Tour Quilt Presented To  
David & Kim Teale - 2019 PWA President



Remembrance Photo Tour Pillow(s)  
Presented To All Attending Member(s)





## Plaque Crafted By Susan & Ron Cherry:

Service Award Presented To  
David Teale President & Ron Cherry Tour Coordinator  
By  
Jim Blaszcak President & Robert Bullard Tour Coordinator



Victrola Raffle - Kim Teale Coordinating  
Donated By Jackson Garrison













## Piney Wood Model A Ford Club (PWA) Membership Application

One Year Family Membership \$25.00  
Renewal dues are delinquent after December 31<sup>st</sup>

Membership is open to anyone who owns, drives, or just appreciates the Model A Ford. PWA recognizes any year, make or model of the Model A Ford from 1928 to 1931. Membership in the *Model A Ford Club of America* (MAFCA) is REQUIRED to become a member of PWA in accordance with our by-laws. Every member of PWA enjoys the same rights, including the right to vote and to hold office in PWA.

PLEASE PRINT

Date of Application \_\_\_\_\_ Dues being paid for year \_\_\_\_\_ (January 1 – December 31)

New Member ( ) or Renewal ( ) Renewing members, what year did you join PWA? \_\_\_\_\_

Name \_\_\_\_\_ Birthday: Month \_\_\_\_\_ Day \_\_\_\_\_

Spouse \_\_\_\_\_ Birthday: Month \_\_\_\_\_ Day \_\_\_\_\_

Address \_\_\_\_\_ Anniversary: Month \_\_\_\_\_ Day \_\_\_\_\_

City \_\_\_\_\_ State \_\_\_\_\_ Zip \_\_\_\_\_ Email \_\_\_\_\_

Phones: Home \_\_\_\_\_ Cell \_\_\_\_\_ Cell (spouse) \_\_\_\_\_

Children under 18 years of age:

Names \_\_\_\_\_ Birthday: Month \_\_\_\_\_ Day \_\_\_\_\_

\_\_\_\_\_ Birthday: Month \_\_\_\_\_ Day \_\_\_\_\_

\_\_\_\_\_ Birthday: Month \_\_\_\_\_ Day \_\_\_\_\_

What is your MAFCA member number? \_\_\_\_\_ --required for PWA membership

Are you a member of any other automobile clubs?

\_\_\_\_\_ / \_\_\_\_\_

\_\_\_\_\_ / \_\_\_\_\_

Model A's Owned: YEAR, MODEL, BODY STYLE, CONDITION\*

1. \_\_\_\_\_

2. \_\_\_\_\_

3. \_\_\_\_\_

4. \_\_\_\_\_

5. \_\_\_\_\_

\*Condition: O=original, R=restored, B=being restored, M=modified, A=apart

Loanable tools available (ex: spring spreader, engine hoist, hub puller, etc.)

\_\_\_\_\_

Make Check Payable to: Piney Wood Model A Ford Club

Mail to: Perry Jones  
19207 Stanton Lake Dr.  
Cypress, TX 77433  
281-844-0951



# Garage Talk

By: Frank De Lucia, Newsletter Editor



## **TECH TIPS**

Does Your Light Switch Rattle?

### Light Switch Silencer



Three views showing the shape of the "silencer"

The parts books show that in mid-1930 Ford introduced a small brass bushing, "A-3529 Steering gear lighting switch tube silencer". The bushing may have been used earlier (it was certainly needed) and overlooked in the parts lists. It was formed from .006" thick brass stock. Listed as 29-31, it may have been intended for the Gemmer steering box only but probably well suited to the Ford steering box as well.



The silencer installed in the top of a steering

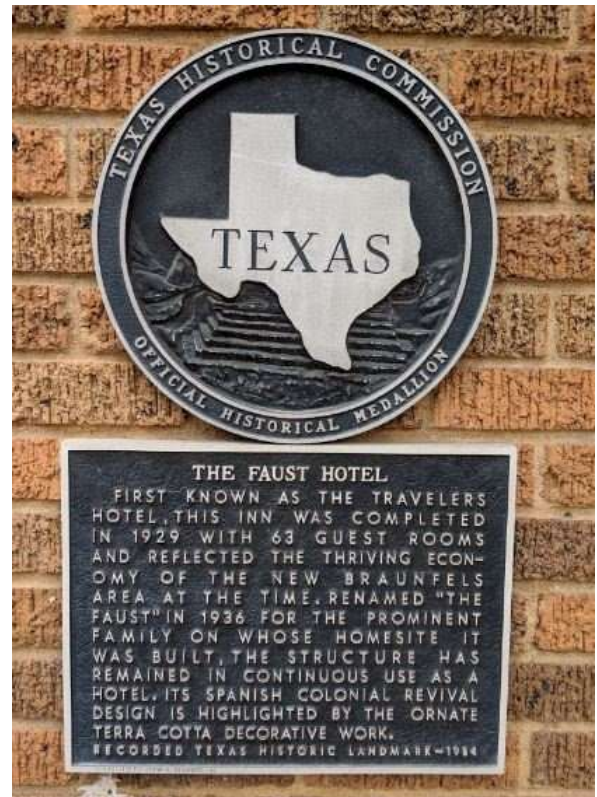
The switch tube measures approximately .370" diameter. The hollow center of the Gemmer steering shaft measures approximately .387". That leaves over 1/64" for the switch tube to rattle! The compound shape of the "silencer" resulted in a springy, resilient bushing. The lower edge was rolled inward to center the switch rod with minimal pressure. The flange at the top functioned as somewhat of a thrust washer for the spring loaded switch tube assembly. With all original parts it not only eliminates the rattle, but actually reduces binding of the switch tube. If you have a replacement switch tube, you will need to be sure there are no burrs or other problems at the top of the tube.

# What's On The Lady A's Calendar?

By: Susan Cherry, PWA Lady "A" Activities Coordinator

Our Sweetheart Tour for 2020 will be at the Faust Hotel in New Braunfels, Texas. We will have dinner and an overnight stay at the hotel on Saturday February 8th. Located in historic downtown New Braunfels, the Faust Hotel opened in 1929 which makes it another interesting destination for a Model A tour. Please call the hotel to make your reservation, we have 30 rooms blocked at a rate \$20 less than the standard rate for each room. There are quite a number of rates depending on whether you need a single/double or queen/king, etc. You will need to ask for the rate for the Piney Wood Model A Ford Club.

Faust Hotel  
240 S Seguin Ave  
New Braunfels, TX 78130  
(830) 625-7791





# What's On The Calendar?

By: Robert Bullard, PWA VP & Tour Coordinator



## **ANNUAL MODEL A SAFETY CHECK JANUARY 11, 2014 8:30 to 12:00**

Our club is fortunate to annually check our Model A's at Copperfield Automotive. The shop is owned by Richard Olejnik and his partner Patrick Vatuna and is located in the Copperfield area at 8411 Queenston Boulevard, 77095. As in the past we will be utilizing multiple lifts to run our cars through. In order to drive our cars safely we will be checking the following areas (a detailed check sheet will be available at Copperfields):

- Tires and wheels (including spare)
- Brakes
- Lights
- Horn and Windshield Wiper
- Engine Compartment: Electric Wiring, Gas Line/Carburetor, Hoses & Fan Belt
- Body
- Other: Radiator, All Lubricants, Battery, Muffler, Grease Fittings
- Non Factory Safety Items: Fuse, Fire Extinguisher, Turn Signals, Seat Belts, Tool Kit
- Change Oil (Bring your Own)

Those that would like to caravan to the Copperfield Automotive from Tomball we will be departing Denny's at 8:00am. Traditionally, after the safety check, we will stop for lunch at Ramero's Las Brazas Restaurant before returning home.

There will be no sign up for this event since our monthly club meeting is later in the month. Rain or shine don't miss this opportunity to get under your car without having to lie on your back! When is the last time you greased your "A"?

Any questions/concerns call Robert Bullard at 918-857-7577.

# PWA Breakfast Meeting

Jan 18th at 8:00 am



The banner features the Magnolia Diner logo on the left, which includes a vinyl record graphic. On the right, text asks "NOT SURE WHAT TO EAT? CHECK OUT OUR MENU OPTIONS!" with an arrow pointing to a pink "MENUS" button. Below this, a large headline reads "HUNGRY? WE CAN FIX THAT". To the left of the headline is a paragraph about the diner's 50's style, Southern hospitality, and Texas-sized portions. To the right is a "SUBSCRIBE TO OUR EMAIL ALERTS" section with a text input field and a "Submit" button.

**Magnolia Diner**

NOT SURE WHAT TO EAT?  
CHECK OUT OUR MENU OPTIONS!

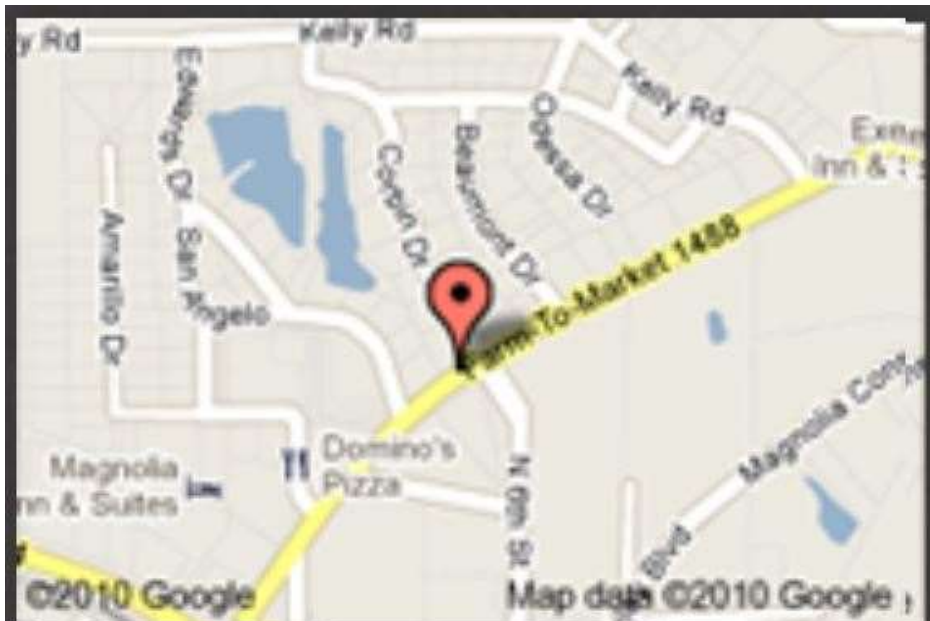
**MENUS**

**HUNGRY? WE CAN FIX THAT**

We are Magnolia Diner. A 50's style diner with a Hollywood twist, Southern hospitality and Texas-sized portions. We use local, fresh ingredients and focus on a hand-made, hand battered, home-style approach to food. From freshly cracked eggs to salads and burgers you will crave, Magnolia Diner has an endless range of possibilities to leave you happy. Our customers are loyal and we're sure you will be too, so come on down, you'll love it here!

SUBSCRIBE TO OUR  
EMAIL ALERTS

Submit



A Google Map showing the location of Magnolia Diner. A red pin marks the spot at the intersection of FM 1488 and N 6th St. The map includes labels for nearby streets like Kelly Rd, Oressa Dr, Belmont Dr, and Corpus Dr, as well as businesses like Domino's Pizza and Magnolia Inn & Suites. A yellow line highlights the route to the location.

18423 FM 1488 Rd # G  
Magnolia, Montgomery TX 77354  
(281) 356-9197



# Sunshine Report

By: Mitzi Shaddix, Sunshine Coordinator

NEW MEMBER'S: Armand & Becky Casarez  
Stephen & Stephanie Levine

---

Carla Peplinski	1/1
Hank Peplinski	1/2
Gregory Presswood	1/3
Becky Allen	1/7
Frank DeLucia	1/8
Tina Fernandez	1/10
Marshall Isaacson	1/10
David Teale	1/10
Donna Lewis	1/12
Leona Moore	1/18
Jim Cannon	1/30
James Campbell	1/31



---

Dale & Martha Howard	1/4
Elliot & Marion Hertzbach	1/5
Randy & Elizabeth Fink	1/6
Perry & Tammie Jones	1/9
Earl & Barbara Selman	1/11
David & Linda Ahrens	1/18

# National Club Update

By Jackson Garrison, MAFCA, MARC & MAFFI Representative



[MAFCA  
Informational  
Facebook Page](#)

[MAFCA Group  
Facebook Page](#)



## MODEL A'S IN THE SNOW?

**December 19** - We could use some photos of your Model A's in the snow for the A OF THE DAY.

Or, if you have no snow, just send a nice big photo to [the webmaster](#) and share your joy.



## STAY UP TO DATE

**December 15** - An easy way to stay up to date on our website changes is to look at the [What's New page](#) frequently. All of the major changes and additions to the website are listed there. Make it a habit!

And if you're wondering where something is on the website, check the [SITE INDEX](#) or type in a few words in the **Google Custom Search** Box at the top of any page.

What's  
new?



## 2020 CONVENTION IN KERRVILLE TEXAS

**December 13** - The 2020 MAFCA National Convention will be held in Kerrville, Texas. The convention will be hosted by the San Antonio Model A Ford club, the "Alamo As." The convention will be based in the Y.O. Ranch Resort Hotel.

Kerrville is located in the heart of the Hill Country, one of the most attractive areas in Texas. There are almost endless opportunities for scenic drives and a wealth of interesting places to visit. Kerrville itself is filled with charm, with a great variety of local restaurants and unique shops.



For information and registration forms, [please visit the Convention website](#).





**2020 MAFCA  
National Convention  
In Texas' Hill Country**

**June 21-26**  
[check it out here](#)

Is your chapter hosting an event of  
national or regional interest?

Let us know so we can include it here.



**MAFCA's 2020 Leaders**

**MAFCA's Board of Directors for 2020**

President: Bill Truesdell V. President: David White  
Secretary: Kay Lee Treasurer: David Libbey  
Advertising: Dan Foulk Chapters: Tom Jeans  
Membership: Mike Kelly Publications: Doug Linden  
Technical: Chuck Christensen

**Committee Chairs**

JSC: Tom Rut EFC: Diann Eason  
The Restorers Class: Don Bader



**What's Miss Katie  
Been Up To?**

Here is another of Katie, Ed and Bubba's  
excursions.

[Text Link](#)

**2020 National Awards Banquet  
December 3-6, 2020  
Fort Worth, TX**

more info coming soon

**Take "A" Drive Up Mt. Washington and  
through a Covered Bridge**

**2021 National Tour,  
New Hampshire**

June 20-25

*Watch for details*

**To Sign Up for MAFCA's Monthly Update**

[Click Here](#)

# Era Fashion

By: Frank De Lucia, Newsletter Editor

## 1930s Mens Hat Fashion

The golden age of Hollywood immortalized the polished good looks of a well-dressed man. The hat was not just an accessory it made the man who he was. Gangster or hero, ladies' man or comedian, **1930s men's hats** had a style for everyone.

Formal attire required the silk top hat while the Homburg Or Fedora has worn by most businessmen. The round Derby or Bowler continued to be worn by men yet diminished in popularity by the end of the decade. For casual days or working classes the cap, either wide eight panel or slim ivy caps were the ideal choice.

## Which 1930s hat style fits you?

PWA Members:

Perry & Tammy Jones

Jackson Garrison



Fedora



Homburg



Derby/Bowler



Cap



Boater



Walker

PWA Members

Bob & Marilyn Hitchcock



Take a look at the most common men's hat styles during the decade.



# 1930s Fedora or Trilby

One of the most popular hats for men in the 1930's was the fur felt hat also known as a Trilby or Fedora. The fedora is nearly identical with the Trilby having a slightly shorter crown. Both the smart and handsome detectives and the rough and dangerous gangsters wear these hats in Hollywood movies. Indiana Jones wears one too.

Good or bad, a few details make 1930s Fedora and Trilby hats different from their successors.

PWA Member: Jackson Garrison

Classic  
Fedora



- Popular colors: dark brown, tan, grey, black, olive green, medium blue
- Tall crown
- Made of fur felt
- Featured a deep crease down the center top of the hat that angled toward the back of the head
- Front pinch or crown sides were indented
- The narrow brim was turned up all the way around or on the sides only
- A wide Petersham band wrapped the hat
- A flat Petersham bow was placed on one side of the hat band
- Matching Petersham ribbon bound the hat brim
- Sometimes they were worn tilted to one side

Most hats remained nameless in the 1930s. There were many varieties with small adjustments in crown height and shaping. Most men would purchase hats from a haberdasher where the hats were shaped to suit the customer's face.

# 1930s Homburg Hat

The hat most preferred by aristocrat & gangsters was the Homburg. A slightly more formal hat than the Fedora and its popularity was revived in several Hollywood movies of the period.

PWA Member: Perry & Tammy Jones

Classic  
Homburg



- Most popular color was grey followed by black.
- Made of fur felt
- Tall crown with center crease
- Wide brim in the first half of the 30's and narrower in the second half.
- Curled brim with matching Petersham ribbon and band in the same color as the hat.

A few versions had lighter color trim with a dark band.

Fashion advisors suggested Homburg hats for the full-face aristocrat or gangster because its weight will help to balance large physic. The crown at the base should be as big around as the man's own facial circumference and instead of being folded to a pointed line at the top, it should be blunted, to help square the circle. The Homburg, if worn at an angle will help to neutralize facial rotundity.

# 1930s Straw Boater or Skimmer Hat

The last hat to carry over from the 1920s was the Straw Boater. A nice summer time hat, this was the last decade of its popularity. Lighter straw hats, such as the Toyo, entered the picture in the late 1930s yet the Straw Boater remained a classic well into the 1950s.

Classic  
Straw



PWA Member: Bob Hitchcock



Below Bob's Grandfathers Company Chauffer Medallion  
Was Required On Hat To Drive Company Vehicle's



- Made of hard woven straw
- Shallow crown and flat top
- Very wide striped silk band with flat double bow in sport team colors  
Sometimes band was pleated horizontally
- Wide brim (Skimmer had a slightly narrower brim)
- Worn for summer and sporting events
- Worn straight or tilted to the side

The original light straw hat was the Optimo Panama. It featured a rolled crease along the crown with a snap-brim shaped like a fedora or round brim panama. They were imported from Ecuador not Panama and were more expensive and fragile than the heavy straw boater.



# 1930s Woman's Hat Fashion

PWA Member: Perry & Tammy Jones

Women's 1930s hats were small and simple in decoration yet a work of art in their shaping. Folded, molded, angled felt made hats look like something out of a Picasso painting. A small belt, bow or brooch was the only ornament on women's 30s hats. The cloche had remained common into the 1930s but now had a rolled brim. In summer, a small straw plate hat or very large straw picture hat, some with fabric coverings, were in style. In winter knit berets, scarves and turbans kept heads warm and fashionable. Read about the [history of 1930s women's hats](#).



**YOU'RE IN THE FASHION HEADLINES**

**LITING OSTRICH FEATHER**  
 18-20 200 - Fits heads 21 1/2 to 22 1/2 in.  
 18-20 201 - Fits heads 22 1/2 to 23 1/2 in.  
 Colors: Black, Dark Brown, Light Brown or White. A swirl of soft and smart feathers combines with the style for the darling Black Feathers hat. It has a wide brim and a wide band. It is a lovely profile - and it is the most chic in town. Shop at \$1.00.

**TURN UP IN FINE FEATHER**  
 18-20 202 - Fits heads 21 1/2 to 22 1/2 in.  
 18-20 203 - Fits heads 22 1/2 to 23 1/2 in.  
 Colors: Black, Dark Brown, Light Brown or White. A swirl of soft and smart feathers combines with the style for the darling Black Feathers hat. It has a wide brim and a wide band. It is a lovely profile - and it is the most chic in town. Shop at \$1.00.

**BRISK DOWN-TILT SAILOR**  
 18-20 204 - Fits heads 21 1/2 to 22 1/2 in.  
 18-20 205 - Fits heads 22 1/2 to 23 1/2 in.  
 Colors: Black, Dark Brown, Light Brown or White. A swirl of soft and smart feathers combines with the style for the darling Black Feathers hat. It has a wide brim and a wide band. It is a lovely profile - and it is the most chic in town. Shop at \$1.00.

**FEATHERED HOMBURG**  
 18-20 206 - Fits heads 21 1/2 to 22 1/2 in.  
 18-20 207 - Fits heads 22 1/2 to 23 1/2 in.  
 Colors: Black, Dark Brown, Light Brown or White. A swirl of soft and smart feathers combines with the style for the darling Black Feathers hat. It has a wide brim and a wide band. It is a lovely profile - and it is the most chic in town. Shop at \$1.00.

**ASTRAKHAN CLOTH SHAKO**  
 18-20 208 - Fits heads 21 1/2 to 22 1/2 in.  
 18-20 209 - Fits heads 22 1/2 to 23 1/2 in.  
 Colors: Black, Dark Brown, Light Brown or White. A swirl of soft and smart feathers combines with the style for the darling Black Feathers hat. It has a wide brim and a wide band. It is a lovely profile - and it is the most chic in town. Shop at \$1.00.

**SUEDE AND FEATHER TRIM**  
 18-20 210 - Fits heads 21 1/2 to 22 1/2 in.  
 18-20 211 - Fits heads 22 1/2 to 23 1/2 in.  
 Colors: Black, Dark Brown, Light Brown or White. A swirl of soft and smart feathers combines with the style for the darling Black Feathers hat. It has a wide brim and a wide band. It is a lovely profile - and it is the most chic in town. Shop at \$1.00.

# CLOCHE HATS

By Harriet McNeill, Era Fashion Committee Member

Have you heard this term? Just what is a Cloche hat that we hear so much about during the Model A era? And do we know what we are looking for when we go to a swap meet or antique store? We are always trying to find the perfect headgear to coordinate with our newest fashion find. Maybe we want to be judged and we need a "Cloche Hat?"

'Cloche' is a French word – meaning "bell." It is a bell-shaped close fitting hat and was designed by a milliner named Caroline Reboux in 1908. It was popular during the 1920's and was worn throughout the Model A era, although there were changes as to how it was worn on the head.



In 1928, the hat was worn low on the forehead and was to give the appearance of a small head.

In 1929 you might see a small wisp of hair. The eyebrows and forehead were beginning to show.



1930 was a time for a new look but not everyone was ready to jump at the newest. They were best described as 'off the face.'

By 1931 women were wearing their hair longer. The cloche hat was worn either brimless or the brim flared away from the face.



A variety of fabrics such as felt (worn year round), straw, fur, satin and velvet were used and a hat was a necessary addition to complete an ensemble.



# On The Block

Model A's, Parts & Pieces Sold by Private Individuals



**\$24,000**

**DAVID**

**(262) 325-5206**

**MAGNOLIA TX**

## **1931 MODEL A FORD DELUX ROADSTER**

In Great Condition, Rebuilt Engine (Less Than 1000 Miles),  
Leather Seats & Rumble, 12 Volt, Directional Signals,  
Side Curtains, Quartz Head Lights, Seat Belts,  
New King Pins, Trunk Rack & LED Tail Lights.



**John Brown**

**Cell: (281) 684-4448**

**Home: (281) 829-6464**

## **1929 Model AA 1 Ton Truck**

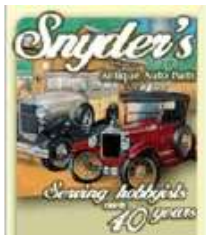


# Supporting Friends Who Support PWA

The following advertisers provide support to our club and the Model A community

Dear Members,

It is very important that we, as a club, support the companies who advertise in our newsletter & directory. Please let them know when you order parts or material, or if you have work done, that you saw their ad in your club newsletter and/or directory.



Web Site: [www.snydersantiqueauto.com](http://www.snydersantiqueauto.com)  
E-Mail: [Don @ SnydersAntiqueAuto.com](mailto:Don@SnydersAntiqueAuto.com)

Snyder's Antique Auto Parts, Inc.  
12925 Woodworth Road  
New Springfield, OH 44443-9753

**Toll Free!** Orders/Info: 888-262-5712 • Fax: 888-262-5713



Web Site: [www.brattons.com](http://www.brattons.com)

**Brattons Antique Auto Parts, Inc.**  
1606 Back Acre Circle  
Mount Airy, MD 21771

**Order Toll Free:** 800-255-1929  
**Fax Toll Free:** 800-774-1930  
**Information:** 301 829-9880



Web Site: [www.mikes-afordable.com](http://www.mikes-afordable.com)  
E-Mail: [mike @ mikes-afordable.com](mailto:mike@mikes-afordable.com)

**Mikes "A"Ford-Able Parts**  
124 Model A Drive  
Maysville GA 30558

Phone: (706) 652-3866 • Fax: (706) 652-2492



Web Site: [www.snjparts.com](http://www.snjparts.com)  
E-Mail: [smithjones@spiritcom.net](mailto:smithjones@spiritcom.net)  
[snjparts@gmail.com](mailto:snjparts@gmail.com)

**Smith and Jones Antique Auto Parts**  
60 Wisconsin Street  
West Columbia, SC 29170

Phone: (800) 422-1928 • Fax: (803) 822-8477

Classics. Antique Autos. Hot Rods. Boats. Furniture.

{ Ahira's Upholstery }



*Working With Imagination and Dedication.*

Ask for Pepe or Ahira 502 Everett St. Conroe, Tx 77301  
(936)-499-5430 santacruzjose727@gmail.com

**Radiator Service**

**Don Hart's**



**800-321-4278**

E: info@donhart.com www.donhart.com



**Olde Texas Engine Works**

*Have Tools*

*Will Travel*



Bob Hitchcock (281) 356-6699

General Tune up's and Maintenance  
Mechanical Restoration Sand Blasting and Painting



**Sweet Rides**

Classic Car Restoration

(281) 259-9947



Located at: 1115 Yancey Drive, Magnolia, TX 77355

We are proud to be an Authorized Repair and Restoration Facility HAGERTY CLASSIC CAR INSURANCE

www.gaslightauto.com 800.242.6491



Urbana, Ohio

**NEW LED headlight**

**6 or 12 VT**

easy replace regular bulb for  
Model 'T' or 'A' Ford \$59<sup>90</sup>/pr



**Gaslight Auto Parts**

www.GaslightAuto.com 800.242.6491 Urbana, OH



**Fink's Parts and Restoration**

1928-1931 Model A Fords  
1932-1948 Flathead Fords  
Model T Fords

Original and Hot Rods  
Porcelain Signs  
Gas Pumps

**Randy Fink**  
3302 Fawn Creek Drive  
Kingwood, TX 77339  
785-282-4757  
rlfksuphotmail.com



**Jeff Fink**  
Instagram @jeffink1926  
785-477-4665  
jfink88@hotmail.com



**Your Ad  
Could Go HERE**

## **2020 Piney Wood Model "A" Ford Club Officer(s) & Chairperson(s)**

### **President:**

Jim Blaszcak jblaszcak@mac.com

### **Vice President & Tour Director:**

Robert Bullard rlbullard1@gmail.com

### **Secretary & Advertising:**

Elaine Bullard elainebullard53@yahoo.com

### **Treasurer:**

Frank De Lucia frankdelucia@att.net

### **Board of Directors:**

Art Shaddix (1) jashaddix@yahoo.com  
Perry Jones (1) jones\_perry@hotmail.com  
Ron Cherry (2) ron.cherry2@gmail.com  
Wayne Mason (2) wmason86@att.net  
David Teale (Past President) dwteale@comcast.net

### **Audit:**

Tammie Jones (1) jonestg@hotmail.com

### **Membership:**

Perry Jones jones\_perry@hotmail.com

### **Newsletter:**

Frank De Lucia frankdelucia@att.net

### **National Reporter:**

Jackson Garrison garrisonja427@gmail.com

### **MAFCA, MARC & MAFFI Representative:**

Jackson Garrison garrisonja427@gmail.com

### **Safety Coordinator:**

Perry Jones jones\_perry@hotmail.com

### **Poultry Coordinator:**

Dan Kundts kundts@yahoo.com

### **Sunshine Coordinator:**

Mitzi Shaddix mitzishaddix@gmail.com

### **Apparel & Accessories:**

Marion Hertzbach bearing1@gmail.com

### **Librarian:**

Dan Kundts kundts@yahoo.com

### **Technical Seminars:**

David Teale dwteale@comcast.net

### **50 - 50 Drawing:**

Kim Teale wteale@comcast.net

### **Christmas Party Committee:**

Susan Cherry rosesandoldlace@gmail.com

### **Mileage Keeper:**

Jim Hartzog jim\_cypress@yahoo.com

### **Webmaster & E-Mail:**

Alex Brock asbrock@me.com

### **Community Involvement (OME):**

Paul Gross paulgross@earthlink.net

### **Lady A Activities Coordinator(s):**

Susan Cherry rosesandoldlace@gmail.com

### **Model A Tool Crib:**

Frank De Lucia frankdelucia@att.net



All newsletter mail should be sent the Editor at address:

### ***The Ford Squeaks - Piney Wood Model A Ford Club***

Frank De Lucia  
11415 Lakewood Estates  
Houston, TX 77070

frankdelucia@att.net

### ***Club Permanent Mailing Address***

Piney Wood Model A Ford Club  
P.O. Box 691341

"The Ford Squeaks" is the official monthly publication of the Piney Wood Model A Ford Club, Inc. This club is a local chapter of the Model A Ford Club of America (MAFCA), a region of the Model A Restorers Club (MARC). The newsletter is mailed to members, prospective members, and editors of similar publications in exchange for their newsletter. Its purpose is to provide the members with information regarding club activities, upcoming events, Model 'A' restoration and maintenance. Members may publish non-commercial ads at no cost for Model A related items: For Sale, Wanted or Trade. They are also invited to submit articles of interest or information to be published in the newsletter.

**Material must reach the Editor by the 20th of the month to insure publication in the next month's issue.** Membership dues in the Piney Wood Model 'A' Ford Club are \$25.00 per year. Annual membership is required in MAFCA. MAFCA dues are \$45.00 per year (subject to change). Membership applications are available from the Club Membership Director or from our website ([www.pineywoodmafc.com](http://www.pineywoodmafc.com)). The Piney Wood Model 'A' Club meetings are held on the 2nd Tuesday of every month (except December) at 7:00PM at the Valley Ranch Bar-B-Que & Grill Restaurant, at the corner of Spring Cypress & Tomball Parkway (FM249). Other clubs are encouraged to use articles & info from "The Ford Squeaks" as long as credit is given.