

Melting with **Perfection**



WHO WE ARE ?

At Unloadbox, we place a strong value on quality. In other words, we place a high value on the quality of our services. We deliberately do accurate quality inspections and testing at each stage to manufacture high-quality cast goods.

From the start of the production process, such as with the raw materials, through the end, Unloadbox Cast's monthly production capacity ranges from 800 to 1000 tonnes. For instance, we are able to make Grey Cast Iron/ DI Casting products in single pieces weighing between 250g and 1000kg. Ductile iron manhole covers, cast iron sanitary ware fittings, ductile iron casting and ductile iron pipe fittings are just a few of the items we produce using Iron Casting. Manhole cover are made of ductile iron. We use state-of-the-art technologies to create goods of the highest caliber.

Unloadbox. produces and exports high-quality goods. We manufacture both cast iron and ductile iron castings. Our factory is located in Gujarat, India. Casting items include Ductile iron manhole covers, cast iron sanitary ware fittings, ductile iron casting and ductile iron pipe fittings. We also produce ductile iron manhole covers and ductile iron casting. The Passionate crew greatly inspired the Unloadbox. Ductile iron Manhole Cover, Ductile Iron Gratings, Ductile Iron Pipe Fittings, Ductile Iron Foot Step and Cast Iron Sanitaryware Fittings are examples of high-quality ductile iron casting and cast iron casting items. In addition, we make ductile iron manhole covers. Our products are widely used in building material, Drainage Sewer, Electric, Pump Station and Other applications.



WHY US !

We continue to pursue that same vision in today's complex, uncertain world, working every day to earn our customers' trust! During that time, we've become expert in freight transportation by air and all its related services. We work closely with all major airlines around the world.



Quality Control System

We enhance our industry operations by relieving you of the worries associated with freight forwarding.



Highly Professional Staff

An integrated approach to providing engineering services allows our clients to benefit from the commercial logistical



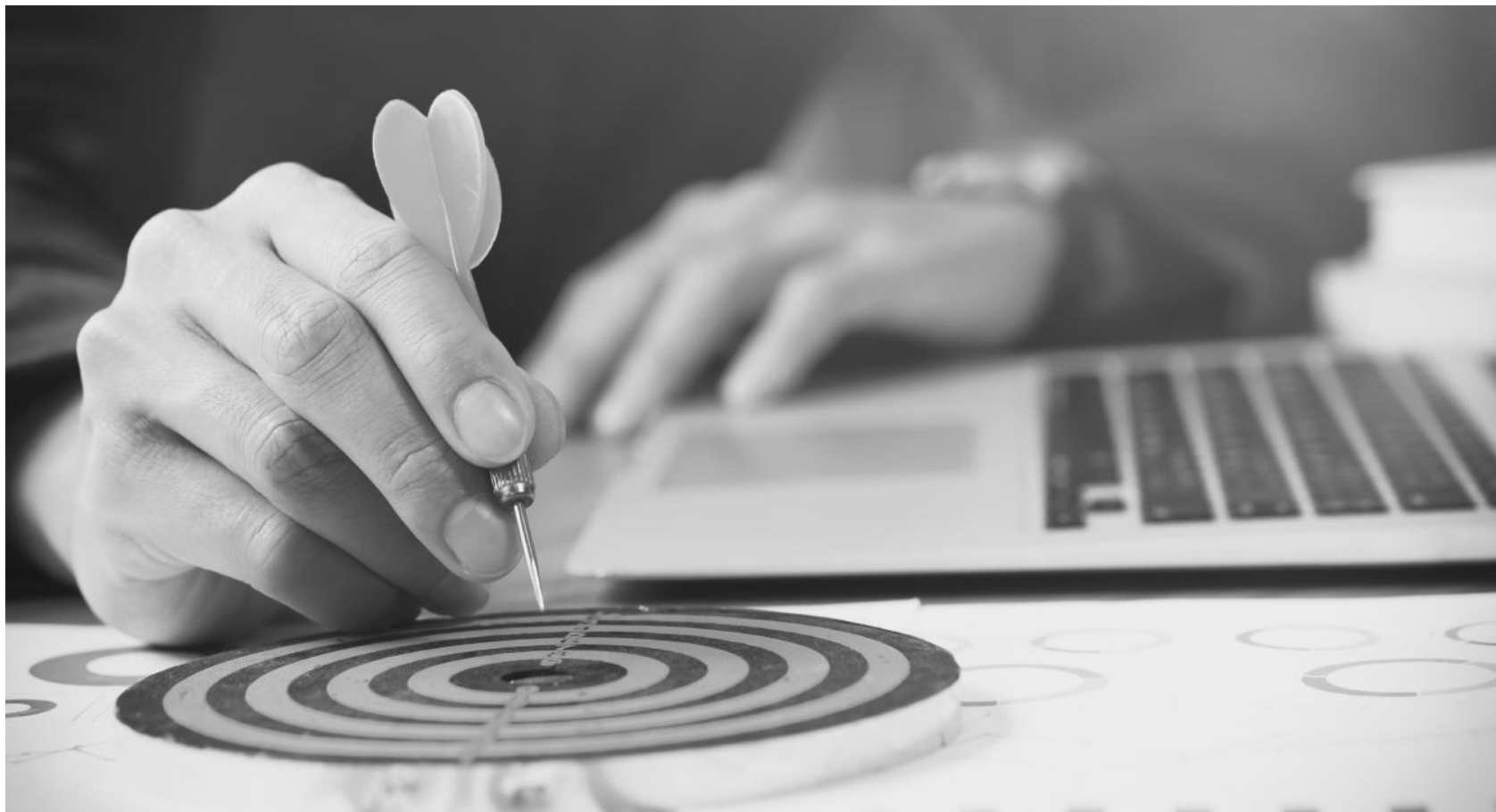
100% Satisfaction Guarantee

We are one of the Nations largest automotive parts recyclers and a widely recognized leader utilizing advanced



Accurate Testing Processes

We'll work with you on your portfolio, large or small. Together we'll fine-tune your new construction or renovation



VISION & MISSION

OUR VISION :

We have the goal of operating a casting foundry that is solely focused on our customers. We firmly believe in fresh concepts, innovative procedures, and ongoing improvement in order to dominate the market and enhance our active involvement in the success of our clients.

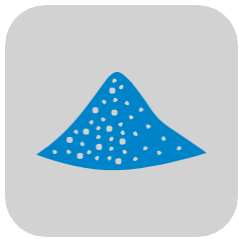
OUR MISSION :

Unloadbox. is the leading producer of all sorts of sand casting in Gujrat because of its cutting-edge technology and processes. We offer high-quality sand castings that relieve our customers' stress and help them save money and time.

OUR STRENGTH :

- ▶ Electrical Furnace with the capacity of 2.5 tone molten metal per hour.
- ▶ Production area of 36,000 sq meter area.
- ▶ Flaskless 1100 x 1050 x 350 mm moulding line per hour 80 mould capacity
- ▶ Sand Plant per Hour 40 tone Capacity
- ▶ Molding Box Size of 1000 x 1250 x 250 mm in single mould.

CASTING PROCESS



Green Sand Casting

A greensand casting is created in an uncured sand mould bonded with clay. The term refers to the fact that the mould is uncured rather than the colour of the sand. Dry-sand moulds are similar, but the sand is baked before being filled with metal.

Alternatively, sodium silicate can be mixed into the sand to form chemical linkages that eliminate the need for baking. Molds built of coarse loam sand, backed up with brick, and faced with extremely refractory material are used for heavy castings.



Sand Preparation

Prepare sand and core sand for moulding by mixing used sand with the appropriate amount of clay in a sand mixer. Molds and core boxes are built in accordance with the part designs. For single-part manufacturing, we can utilize

wooden moulds, plastic or metal moulds for mass production, and pattern plates for massive castings. Molds are now manufactured by engraving machines, which considerably shortens the production cycle, which can take 2 to 10 days



Molding

Sand moulding includes sand moulding, core fabrication, and mould fitting. Sand moulding is the process of creating a hollow for a casting out of moulding sand.

The creation of cores, which are utilized to construct the interior shape of the casting, is referred to as core making. The assembling of the top and lower sandboxes after the cores have been inserted into the cavity is known as mould fitting. Molding is an important step in the casting process.



Melting

The chemical composition must be compatible with the desired metal. The alloy material is melted in a suitable furnace to generate a certified liquid metal (piece and temperature of the molten metal must comply). Cupolas or electric furnaces

are used in melting (due to environmental requirements, cupolas have mainly been outlawed, so electric furnaces are the primary choice).



Pouring

A ladle is used to pour molten metal from the electric furnace into the mould. Pouring speed is crucial to guarantee that the molten iron fills the whole cavity. Pouring the iron is equally dangerous, so use caution!

CASTING PROCESS



Fettling

Unloadbox. has a strategy in place to carry castings from the mould dumper to the primary shot blasting point via a conveyor. Following the initial shot blasting, the castings would be shipped grinding. Shot blasting is simply a cleaning procedure in which abrasive material is pushed via a jet nozzle utilising compressed air to impact on the casting surfaces. Fettling is critical for final castings to guarantee that the pieces fulfill aesthetic and dimensional criteria. At Unloadbox., fettling machinery such as hangar type and wire mesh type machines are installed. Manual grinding on conventional grinding equipment is another finishing procedure used at Unloadbox Cast to finish castings.



Coating

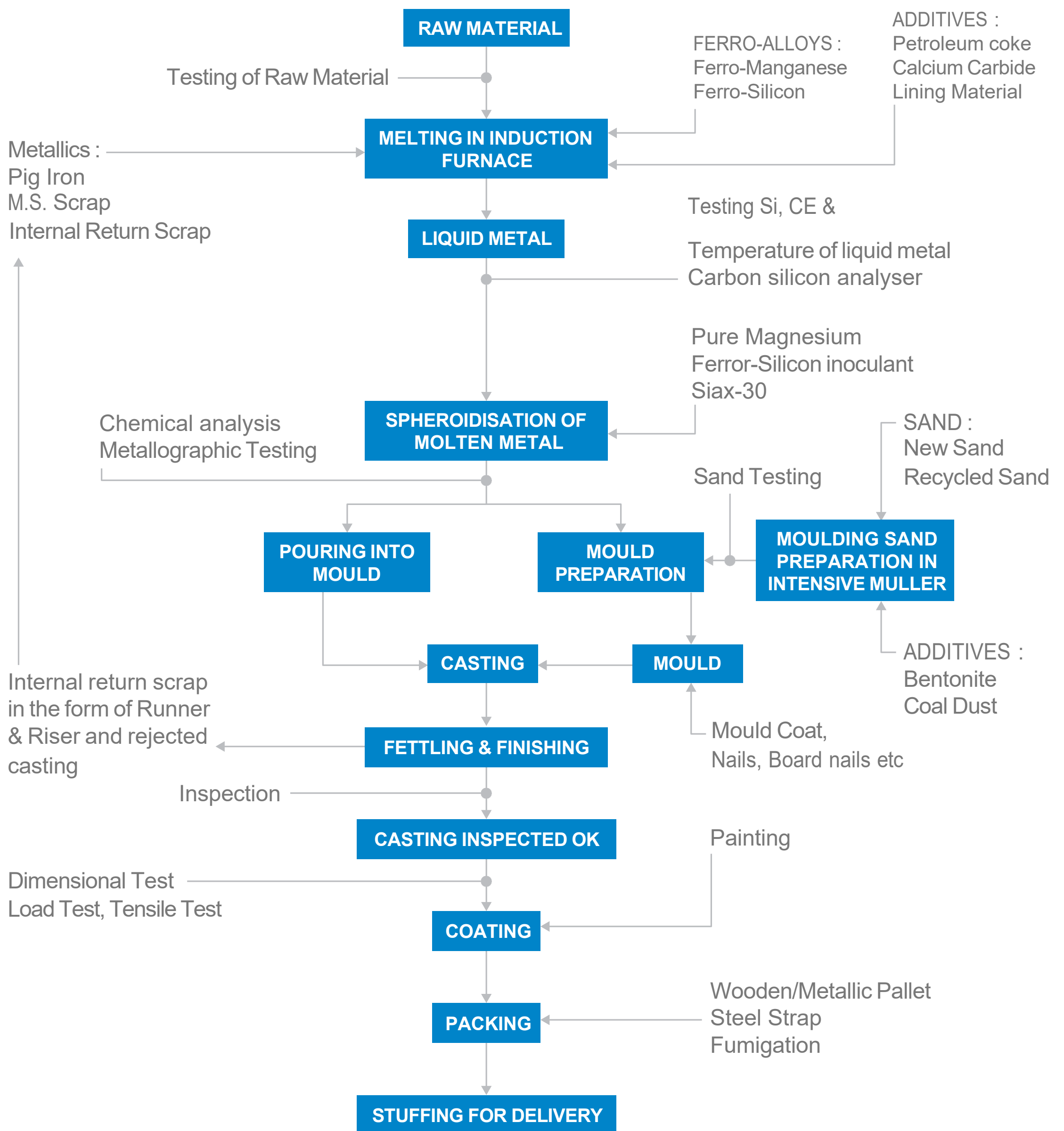
Casting coating is a significant casting raw and auxiliary material that plays a vital role in assuring the surface quality of castings. Many factors influence the technical features of casting coating. The major technical indicators of casting coating have a significant impact on casting quality. The essential conditions for ensuring that coatings play a role are the right purchasing and application of coatings. High efficiency, environmental protection, and economics will be major future paths for paint development. New moulding processes, such as lost foam and V-process, necessitate the creation of matching coatings. The rising demand for casting quality necessitates the development of the matching casting coating. The casting coating has the finest development prospects.



Packing

There are several packing options available, which are chosen based on the type of goods and the amount of the order. Once the appropriate design dimensions and handling limits are determined, the optimal packing and shipping techniques are specified for each new product. Special packaging is frequently required to meet individual units or bulk packing needs. Custom packing is another alternative for meeting the client's individual needs or designing specialized solutions for domestic or international shipments.

FLOW CHART



UNLOADBOX

Gurgaon, Haryana, India

Phone: +91 7217571324

sales@unlaodbox.com | unlaodbox@gmail.com info@unloadbox.com

www.unloadbox.com



MACHINING & FACILITIES

- ▶ **Flaskless 1100 x 1050 x 350 mm moulding line**
- ▶ **Sand Plant 40 tone Per Hour**
- ▶ **Arpa 900 Moulding Machine**
- ▶ **Jolting Machine**
- ▶ **Induction Furnace**
- ▶ **Spectrometer**
- ▶ **UTM Machine For Tensile**
- ▶ **Brinell hardness Testing**
- ▶ **Sand Testing Machine**
- ▶ **Load and pull Testing for EN 124 casting**
- ▶ **Paint thickness Testing**
- ▶ **Mould Hardness Testing**
- ▶ **Diamansion Measurement**