

# ***“Essential”* Series by** Holmes Building Systems



The following floor plans & elevations are for illustration purposes only. Refer to working drawings for actual dimensions.





**Structural Features**

- R 30 Batt Insulation in Ceilings
- R-19 Insulation in Walls
- Wind Zone 115 VULT
- OSB Floor Decking 23/32"
- (2 X 10) Floor Joist 16" OC
- (2 X 6) 8' Sidewalls 16" OC
- (2 X 6) Top & Bottom Plates
- (2 X 4) 8' Double Marriage Walls
- Engineered Roof Systems
- 5/12 Roof Pitch

**Plumbing**

- Water Shut-Off Valves
- Pex Plumbing System
- 50 Gallon Water Heater
- Exterior Frost-Free Water Faucet (1 @ STD Location Per Plan)
- Whole House Water Shut-Off
- Washer Hook-Up
- Kitchen Pull Out Faucet

**Baths**

- 60 x 43" Fiberglass Shower, M/Bath (Per Plan)
- 60" Fiberglass Tub/Shower, Hall Bath
- White Shaker Style Vanity Cabinets
- 36" High Lavatory(s) in M/Bath
- 36" High Lavatory in Bath 2
- Towel Bar/Tissue Holder All Baths
- Dual Lever Bath Faucets
- Cultured Marble Lavatories in Baths

**Exterior Features**

- D5 Vinyl Siding
- 15" Raised Panel Shutters
- 7/16" OSB Wrap Exterior Walls
- 36" 6 Panel Front Door w/No Storm
- 36" 6 Panel Rear Door w/No Storm (Per Plan)
- 12" Eave Overhangs (All Sides)
- Grid-less Insulated Windows
- House Wrap
- Limited Lifetime Architectural Shingles

**Kitchen**

- S/S Dishwasher
- S/S Space-saver Microwave
- Stainless Steel Double Bowl Sink
- Laminate Countertop w/ Laminate Backsplash & Ideal Edging
- 30" Overhead Cabinets w/Matching Cove Molding
- Shaker Style Cabinets (Colors: White, Black, Gray)
- Kitchen Island White Shaker Style Cabinets

**Flooring**

- 25 oz. Carpet w/ Pad & Tack Strip (Shipped Loose)
- 6 lb. Re-Bond carpet Pad
- Congoleum Vinyl Flooring in Designated Areas (Per Plan)

**Interior Appointments**

- 1/2" High Strength Sheetrock Ceilings w/Smooth Finish
- (2 X 4) Interior Wall Construction
- 36" Interior Doors M/Bedroom, MBR Closet & M/Bath
- Mortised Door Hinges
- 3 1/2" Crown Molding
- 6" Baseboard Molding
- 2 1/4" Window/Door Casing
- Metal Shelf over Washer/Dryer
- Finished 1/2" Sheetrock Thru-out
- Lever Interior Door Hardware

**Electrical**

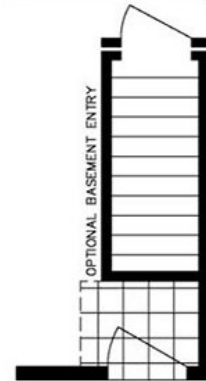
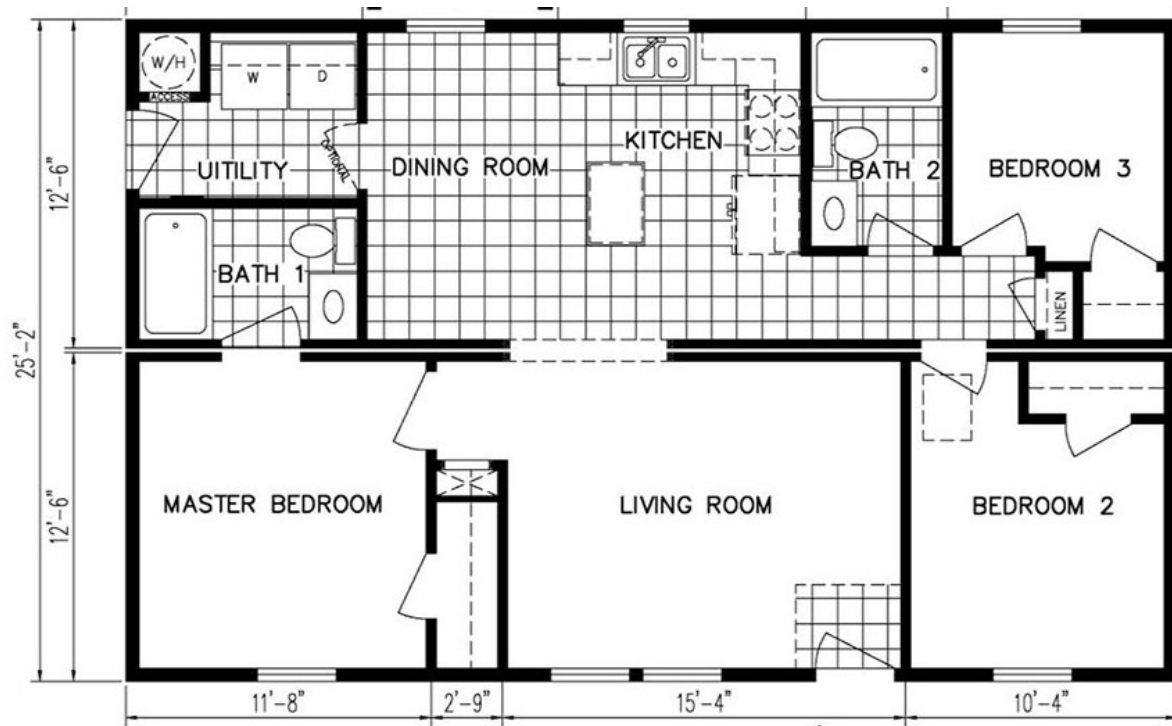
- Surface Mount LED Recessed Light Ceiling Fixtures T/O
- Exterior Light @ Exterior Doors
- Exterior Electrical Outlet (@ Exterior Doors)
- 200 AMP Panel Box
- Smoke Detector Systems
- Dryer Hook-up with recessed exhaust box
- 1 1/4" Conduit Running Down from Electrical Panel Box for Future Use

**Available Options Per Plan**

- 150 VULT Wind Zone
- 30" Smooth Top S/S Range
- 25 CF Side by Side Refrigerator S/S w/Icemaker
- 7/12 Roof Pitch
- Sliding Glass Door(s)
- (2) Pendant lights w/ Separate Switch over Kitchen Island
- Congoleum Vinyl Floor ILOCarpets in Family Room
- Vinyl Plank Flooring (Ship Loose)



# The Essential Series by Holmes Building Systems



OPTIONAL BASEMENT ENTRY



Elevation Shown with Optional and On-Site Builder Supplied Items. Consult Your Builder for Pricing.

## Chestnut

Model 4025A HBSE R

Approx. 1007 Sq.Ft.



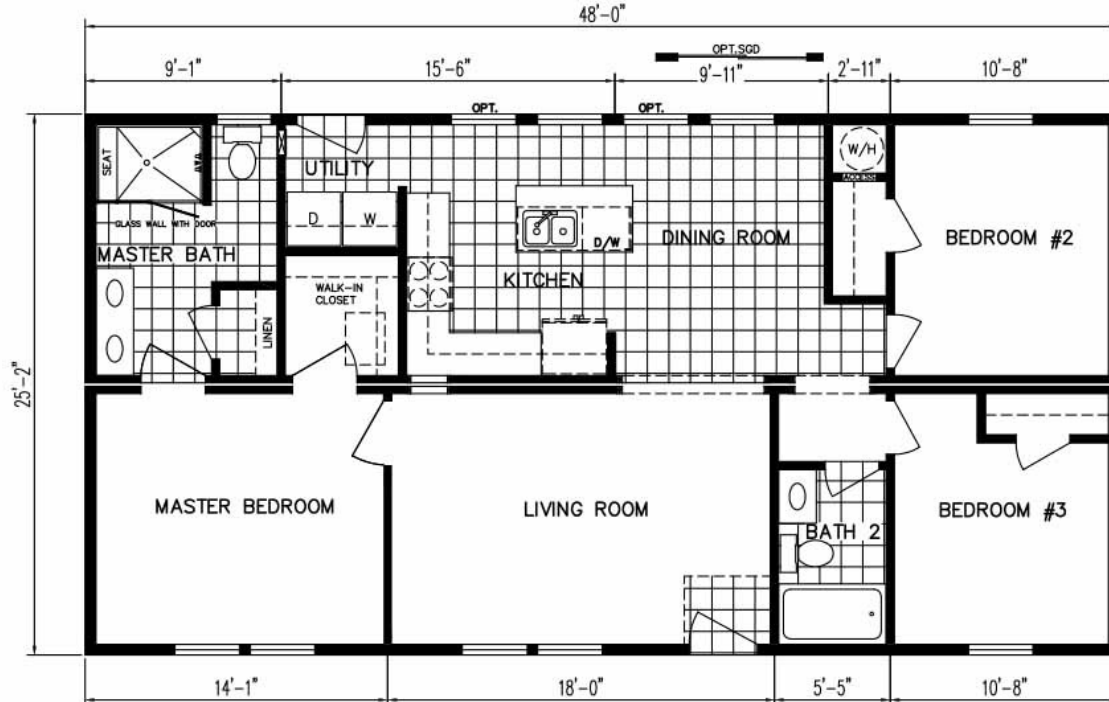
Holmes Building Systems  
 2863 Old Plank Rd.  
 Robbins, NC 27325  
[www.holmesmodular.com](http://www.holmesmodular.com)



# The Essential Series by Holmes Building Systems

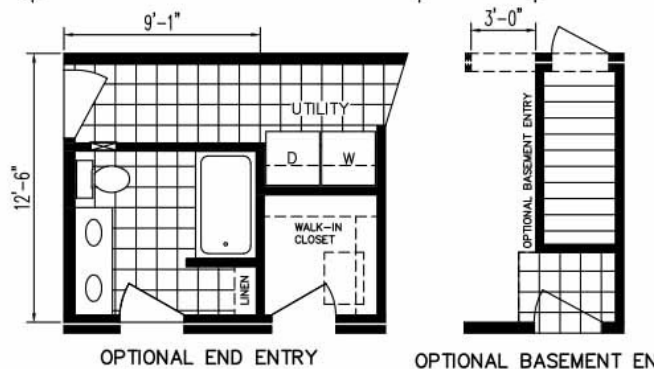


Elevation Shown with Optional and On-Site Builder Supplied Items. Consult Your Builder for Pricing.



## Live Oak

Model 4825A HBSE R  
Approx. 1208 Sq.Ft.



Holmes Building Systems  
2863 Old Plank Rd.  
Robbins, NC 27325  
[www.holmesmodular.com](http://www.holmesmodular.com)





# The Essential Series by Holmes Building Systems



## Birch

Model 5425A HBSE R

Approx. 1334 Sq.Ft.

(Includes Porch)



Elevation Shown with Optional and On-Site Builder Supplied Items. Consult Your Builder for Pricing.



Holmes Building Systems

2863 Old Plank Rd.

Robbins, NC 27325

[www.holmesmodular.com](http://www.holmesmodular.com)



# The Essential Series by Holmes Building Systems



## Hawthorn

Model 5625A HBSE R

Approx. 1409 Sq.Ft.



Elevation Shown with Optional and On-Site Builder Supplied Items. Consult Your Builder for Pricing.

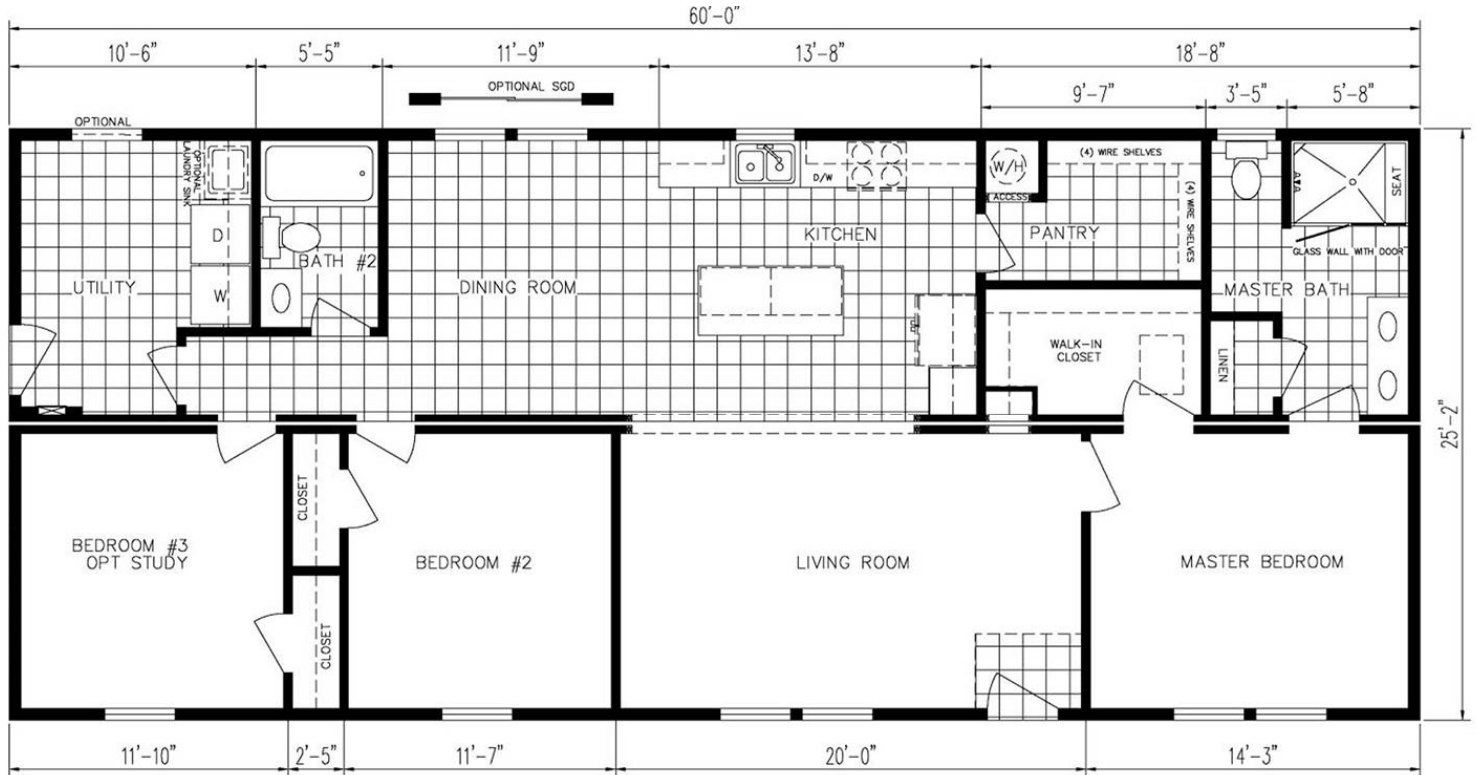


Holmes Building Systems  
2863 Old Plank Rd.  
Robbins, NC 27325  
[www.holmesmodular.com](http://www.holmesmodular.com)





# The Essential Series by Holmes Building Systems



## Magnolia

Model 6025C HBSE R

Approx. 1510 Sq.Ft.

Elevation Shown with Optional and On-Site Builder Supplied Items. Consult Your Builder for Pricing.



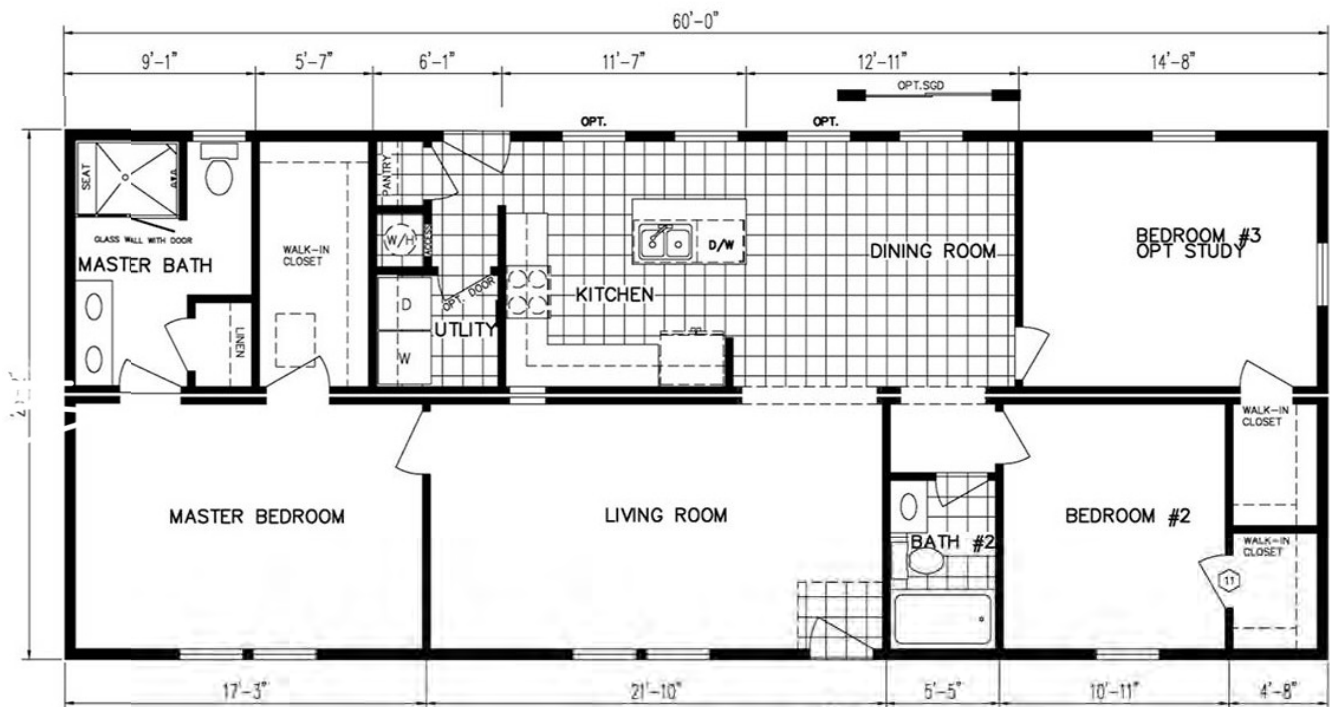
Holmes Building Systems  
2863 Old Plank Rd.  
Robbins, NC 27325  
[www.holmesmodular.com](http://www.holmesmodular.com)



# The *Essential* Series by Holmes Building Systems



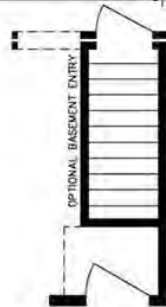
Elevation Shown with Optional and On-Site Builder Supplied Items. Consult Your Builder for Pricing.



## Willow

Model 6025A HBSE R

Approx. 1510 Sq.Ft.



OPTIONAL BASEMENT ENTRY



Holmes Building Systems

2863 Old Plank Rd.

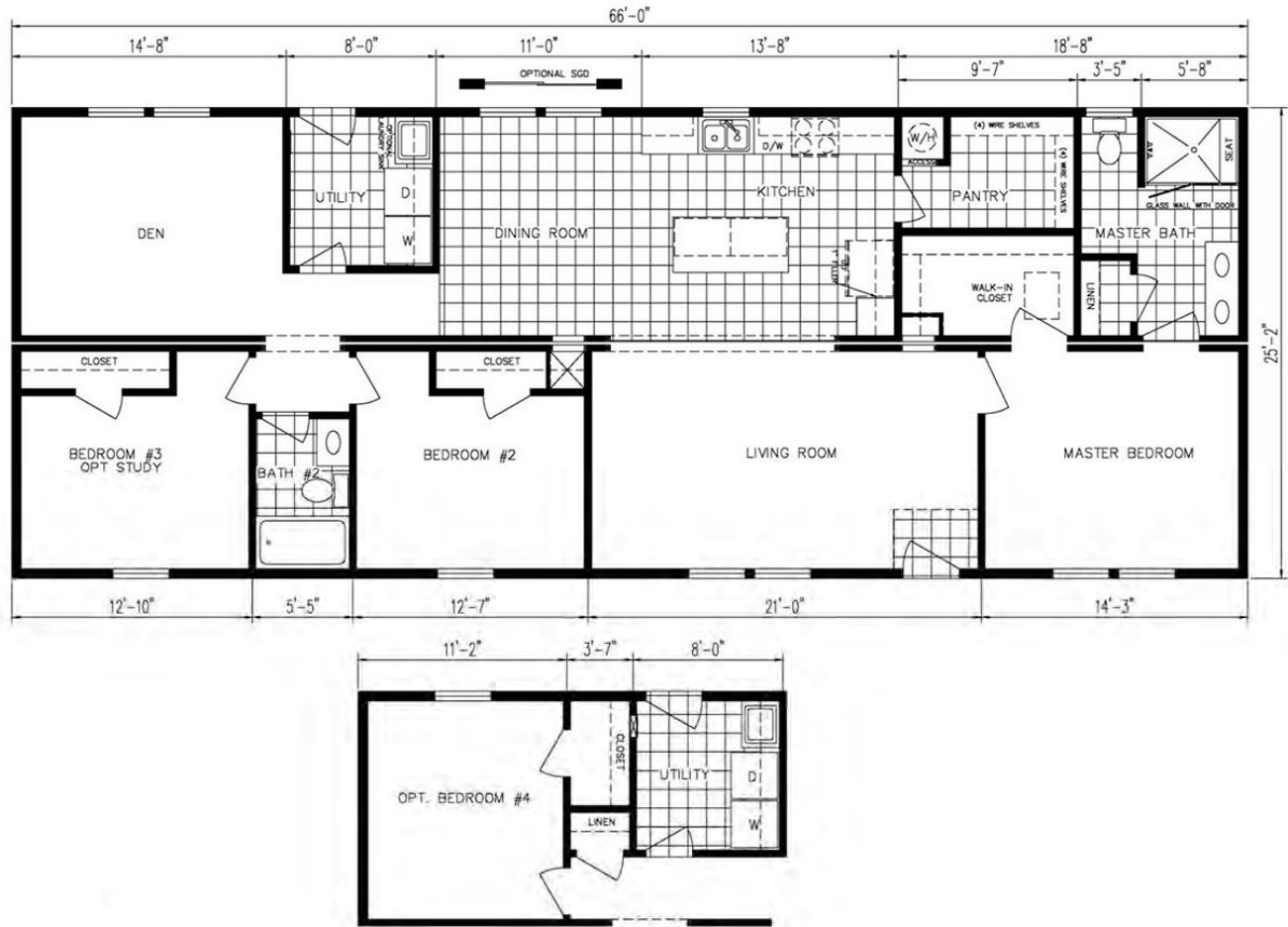
Robbins, NC 27325

[www.holmesmodular.com](http://www.holmesmodular.com)





# The Essential Series by Holmes Building Systems



## Sycamore

Model 6625A HBSE R

Approx. 1661 Sq.Ft.



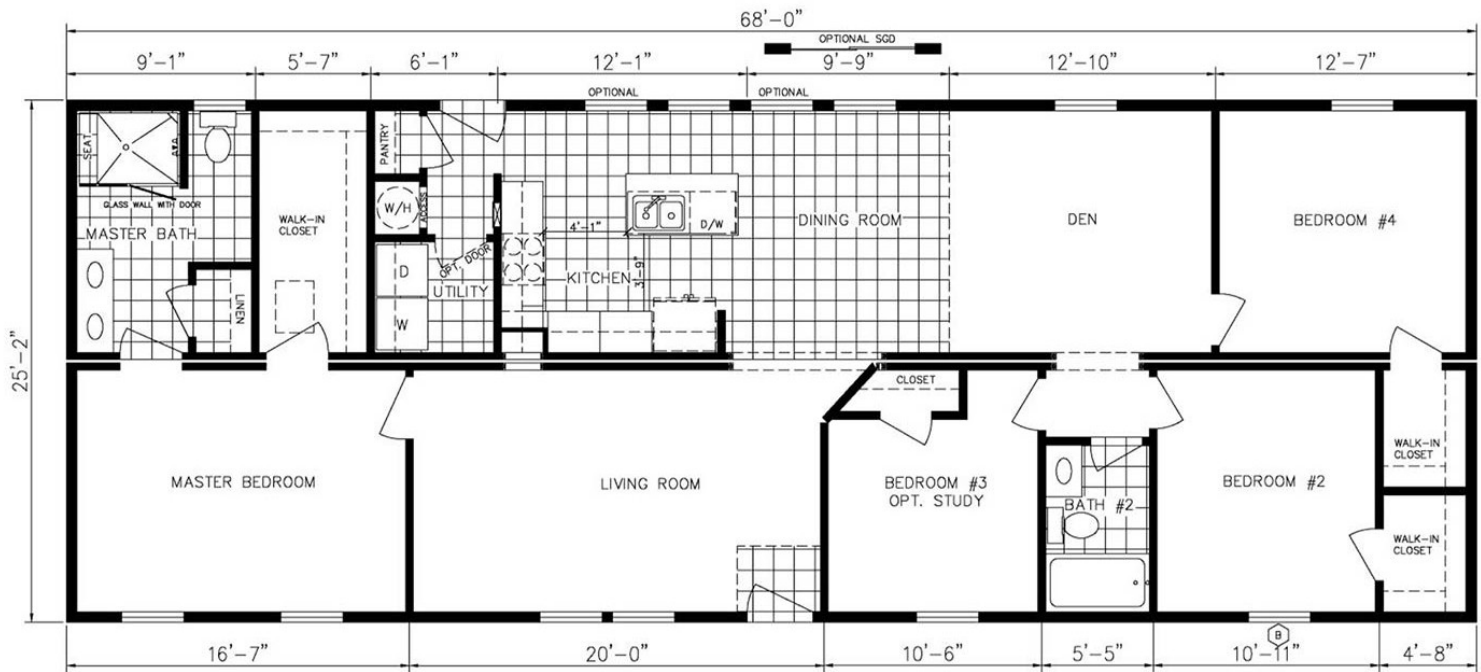
Elevation Shown with Optional and On-Site Builder Supplied Items. Consult Your Builder for Pricing.



Holmes Building Systems  
2863 Old Plank Rd.  
Robbins, NC 27325  
[www.holmesmodular.com](http://www.holmesmodular.com)



# The Essential Series by Holmes Building Systems



## Cedar

Model 6825A HBSE R

Approx. 1711 Sq.Ft.

Elevation Shown with Optional and On-Site Builder Supplied Items. Consult Your Builder for Pricing.

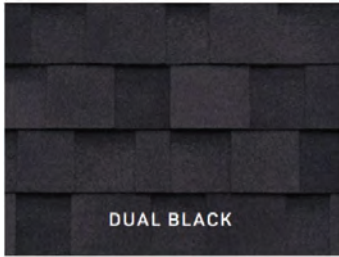


Holmes Building Systems  
2863 Old Plank Rd.  
Robbins, NC 27325  
[www.holmesmodular.com](http://www.holmesmodular.com)



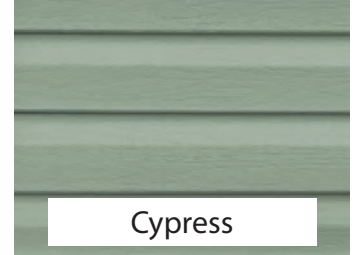
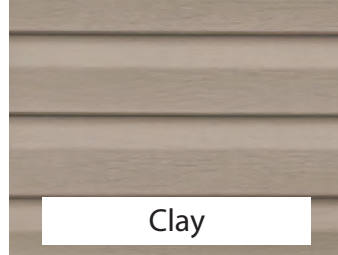
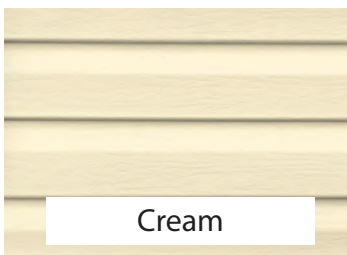


# Essential Series Décor Choices



Limited Lifetime Warranty Architectural Shingles

## Double 5 DL Vinyl Siding



## Vinyl Shutter Selections



Green



Brown



Blue



Black



Cranberry

# Essential Series Décor Choices

## Shaker Style Kitchen & Bath Cabinets

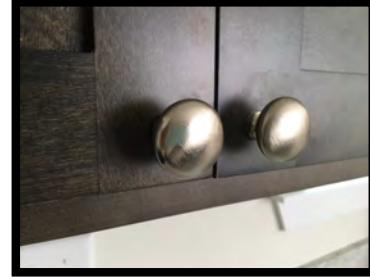
BLACK RAVEN



WHITE



Door & Drawer Brushed Nickel  
Knob Cabinet Hardware



Optional Kitchen 3" x 5"  
White Ceramic Subway  
Tile Backsplash

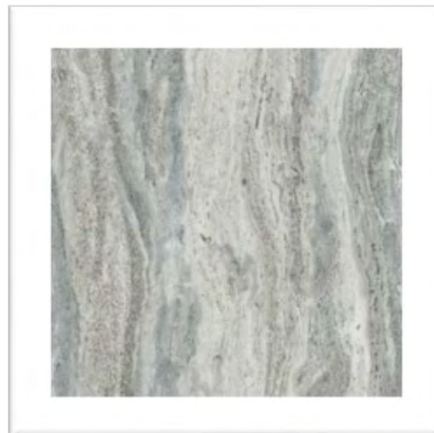


## Laminate Countertop with Square Edging

Calcutta Marble- 3460



Fantasy Marble- 9302



Antique Mascarello- 3466



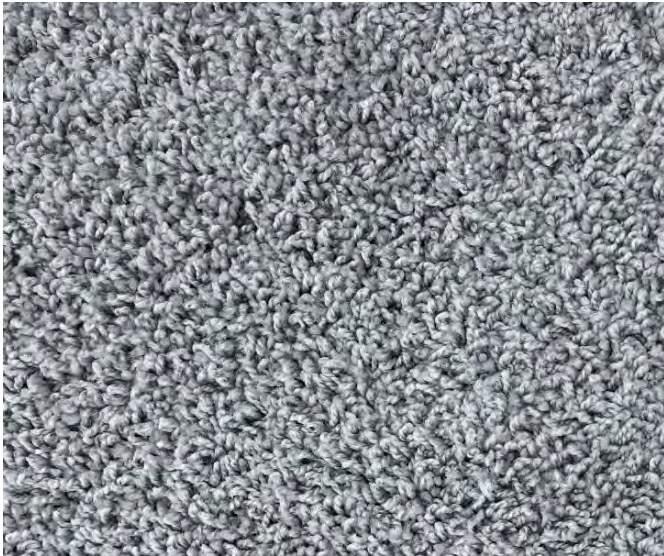
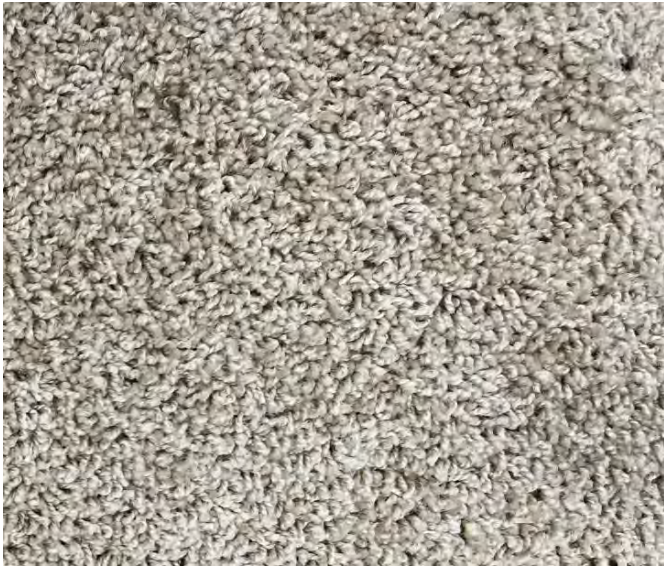
*\* Some items shown and listed are optional. All items and options not available on all models. Please check with your salesman for availability and pricing.*



# Essential Series Décor Choices

## 25oz Carpet

TAN



GRAY

## Congoleum Vinyl Flooring



LX 277 Barn Wood  
Greige

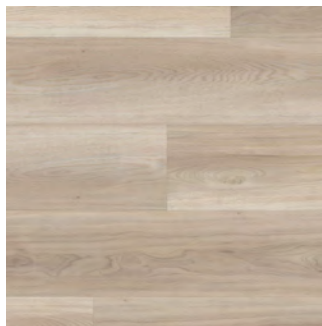


LX 275 Barn Wood  
Vintage White

## Optional Vinyl Plank Flooring



154 Almond Oak



5091 Lighthouse



556 Smoky Oak

*\* Some items shown and listed are optional. All items and options not available on all models. Please check with your salesman for availability and pricing.*

# ***“Essential” Series*** by Holmes Building Systems

## Essential Series Bath Standards

Hall Bath 60”  
Fiberglass  
Tub/Shower

White Square Bowl Cultured Marble Bath Vanities



60” x 43” One Piece Fiberglass Tiled Shower Unit  
with Bench Seat and Glass Door





# Essential Series by Holmes Building Systems

## Essential Series Kitchen Features

STD Stainless Steel Spacesaver  
Microwave



STD Double Bowl Stainless  
Steel Sink



STD Stainless Steel Dishwasher



STD Laminate Countertop with  
Ideal Edge



OPTIONAL  
Stainless Steel 25 Cu.Ft.  
Refrigerator



OPTIONAL  
Stainless Steel 30" Smooth Top  
Range





Your Approved Holmes Building Systems Builder



PO Box 520 2863 Plank Rd.,  
Robbins, NC 27325  
[www.holmesmodular.com](http://www.holmesmodular.com)