

PREFERRED SERIES

by Holmes Building Systems



Structural Features

- R 30 Batt Insulation in Ceilings
- R-19 Insulation in Walls
- Wind Zone 115 VULT
- OSB Floor Decking 23/32"
- (2 X 10) Floor Joist 16" OC
- (2 X 6) 8' Sidewalls 16" OC
- (2 X 6) Top & Bottom Plates
- (2 X 4) 8' Double Marriage Walls
- Engineered Roof Systems
- 7/12 Roof Pitch 24" OC on Ranch Models
- 10/12 24" OC Std on 5628D and 6028K models.

Plumbing

- Water Shut-Off Valves
- Pex Plumbing System
- 50 Gallon Water Heater
- Exterior Frost-Free Water Faucet (1 @ STD Location Per Plan)
- Whole House Water Shut-Off
- Washer Hook-Up
- Kitchen Pull Out Faucet

Baths

- 48" Fiberglass Shower, M/Bath (Per Plan)
- 60" Fiberglass Tub/Shower, Hall Bath
- 72" Drop-In Tub M/Bath (Per Plan)
- 6" Ceramic Backsplash on Laminate Tub Platform M/Bath
- 48"x48" Window over Tub M/Bath (Per Plan)
- White Shaker Style Vanity Cabinets
- 36" High Lavatory(s) in M/Bath
- 36" High Lavatory in Bath 2
- Towel Bar/Tissue Holder All Baths
- Dual Lever Bath Faucets
- Cultured Marble Lavatories in Baths

Exterior Features

- D5 Vinyl Siding
- 15" Raised Panel Shutters or 3 1/2" Window Lineals (Front Door Side)
- 7/16" OSB Wrap Exterior Walls
- 36" 6 Panel Front Door w/No Storm
- 36" 6 Panel Rear Door w/No Storm (Per Plan)
- 12" Eave Overhangs (All Sides)
- Insulated Windows Gridless
- House Wrap
- Limited Lifetime Architectural Shingles

Kitchen

- S/S Dishwasher
- S/S Spacesaver Microwave
- 60/40 Stainless Steel Kitchen Sink
- Laminate Countertop w/ Full Ceramic Backsplash & Ideal Edging
- 30" Overhead Cabinets w/Matching Cove Molding
- Shaker Style Cabinets (Colors- White, Gray, Black)
- Kitchen Island White Shaker Style Cabinets with Beadboard
- Double Trash Can Base Cabinet in Island (Per Plan)
- Pot and Pan Drawer Base Cabinet in Island (Per Plan)
- Raised Wall Cabinet over Range

Flooring

- 25 oz. Carpet w/ Pad & Tack Strip (Shipped Loose)
- 6 lb. Re-Bond carpet Pad
- Congoleum Flooring in Designated Areas (Per Plan)

Interior Appointments

- 1/2" High Strength Sheetrock Ceilings w/Smooth Finish
- (2 X 4) Interior Wall Construction
- 36" Interior Doors M/Bedroom, MBR Closet & M/Bath
- Mortised Door Hinges
- 3 1/2" Crown Molding
- 6" Baseboard Molding
- 2 1/4" Window/Door Casing
- Metal Shelf over Washer/Dryer
- Finished 1/2" Sheetrock Thru-out
- Lever Interior Door Hardware
- Shoe Rack with Shirt & Skirt Shelves in Master Bedroom Closet (Per Plan)
- Laminate Top Table in Utility (Per Plan)

Electrical

- Surface Mount LED Recessed Light Ceiling Fixtures T/O
- Ceiling Fans in Bedroom 1, Living Room and Family Room per plan.
- Exterior Light (@ Exterior Doors)
- Exterior Electrical Outlet (@ Exterior Doors)
- 200 AMP Panel Box
- Smoke Detector Systems
- Dryer Hook-up with recessed exhaust box
- 110V Outlet Receptacle in Utility Room Storage Closet (Per Plan)
- 1 1/4" Conduit Running Down from Electrical Panel Box for Future Use

Available Options Per Plan

- | | |
|--|---|
| ▪ Alternate Master Bath Plans | ▪ 16" OC Roof Trusses |
| ▪ Vent-less Gas Fireplace w/ TV Niche Bookcase Cabinetry | ▪ 30" Smooth Top S/S Range |
| ▪ Farmhouse Exterior Package | ▪ 25 CF Side by Side Refrigerator S/S w/Icemaker. |
| ▪ Farmhouse Interior Package | ▪ Sliding Glass Door(s) |
| ▪ Vinyl Plank Flooring | ▪ (2) Pendant lights w/ Separate Switch over Kitchen Island |
| ▪ 150 VULT Wind Zone | ▪ Congoleum Vinyl Floor ILO Carpet in Family Room |
| ▪ 10/12 Roof Pitch 24" OC (where available) | ▪ Brace and Switch for Ceiling Fans-Additonal |
| ▪ 9' Sidewalls (Incls 36" Overhead Cabinets in Kitchen) | |

Preferred Series by Holmes Building Systems



Elevation Shown with Optional and On-Site Builder Supplied Items. Consult Your Builder for Pricing.



Cypress Point

Model 6828A HBSP R

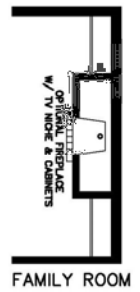
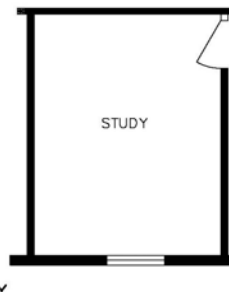
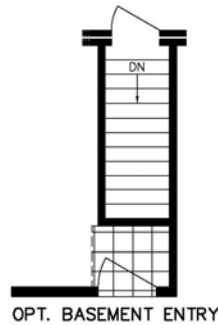
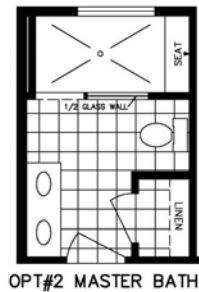
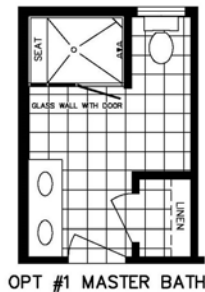
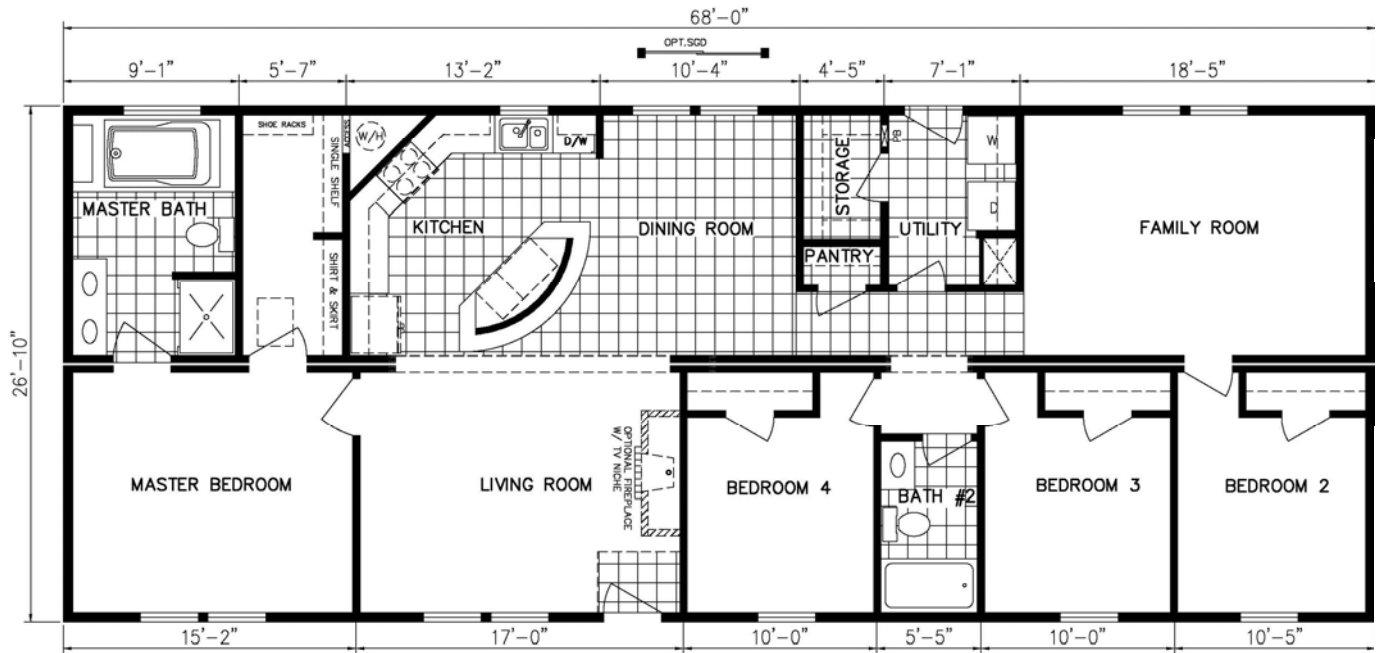
Approx. 1824 Sq.Ft.



Preferred Series By Holmes Building Systems



Elevation Shown with Optional and On-Site Builder Supplied Items. Consult Your Builder for Pricing.



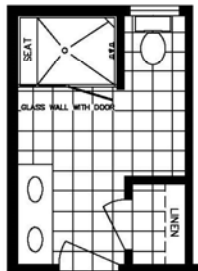
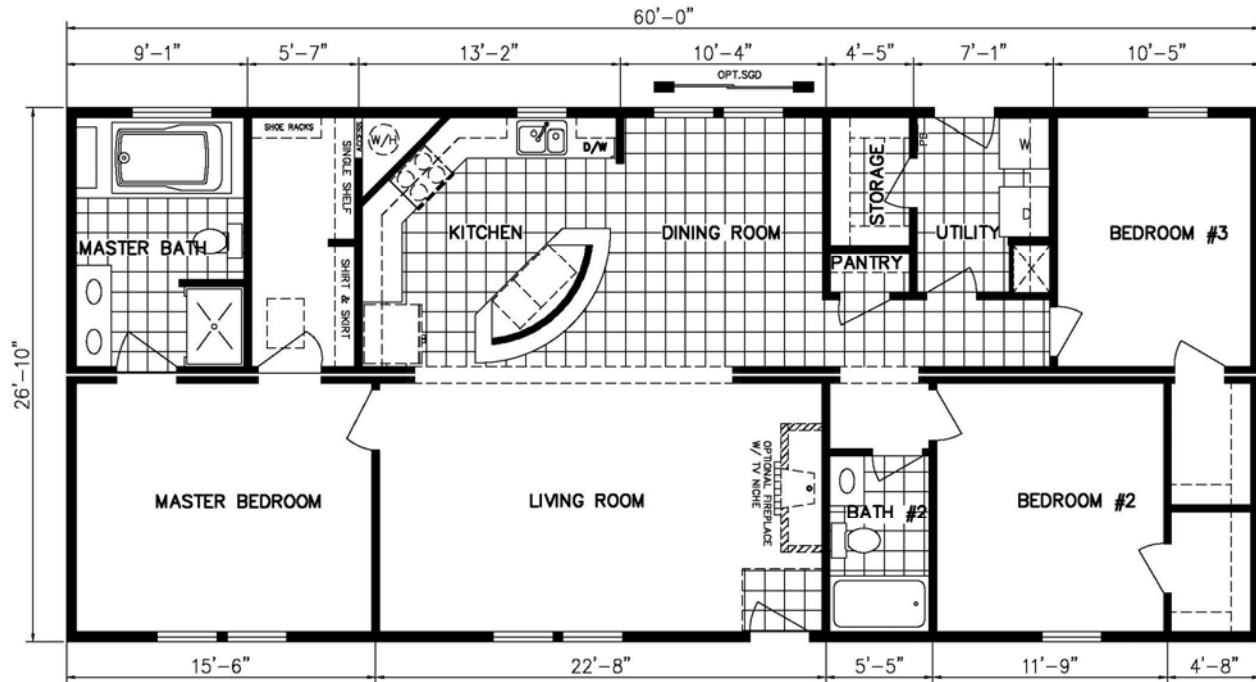
Cypress Point Version 2

Model 6828C HBSP R

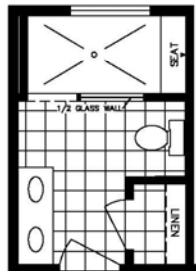
Approx. 1824 Sq.Ft.



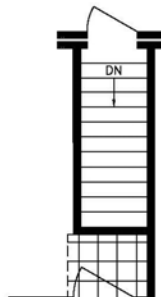
Preferred Series by Holmes Building Systems



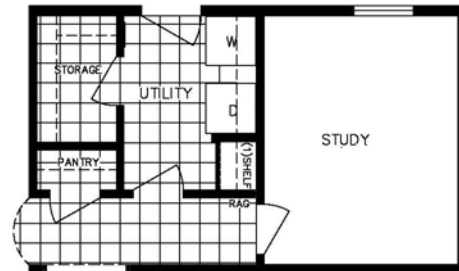
OPT #1 MASTER BATH



OPT #2 MASTER BATH



OPT. BASEMENT ENTRY



OPT. STUDY



Elevation Shown with Optional and On-Site Builder Supplied Items. Consult Your Builder for Pricing.



Cypress Point Version 3

Model 6028J HBSP R

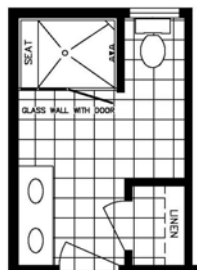
Approx. 1610 Sq.Ft.



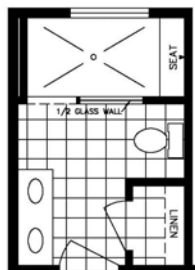
Preferred Series *by Holmes Building Systems*



Elevation Shown with Optional and On-Site Builder Supplied Items. Consult Your Builder for Pricing.



OPT #1 MASTER BATH



OPT #2 MASTER BATH



Torrey Pines

Model 5628A HBSP R

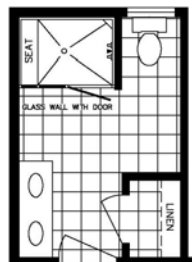
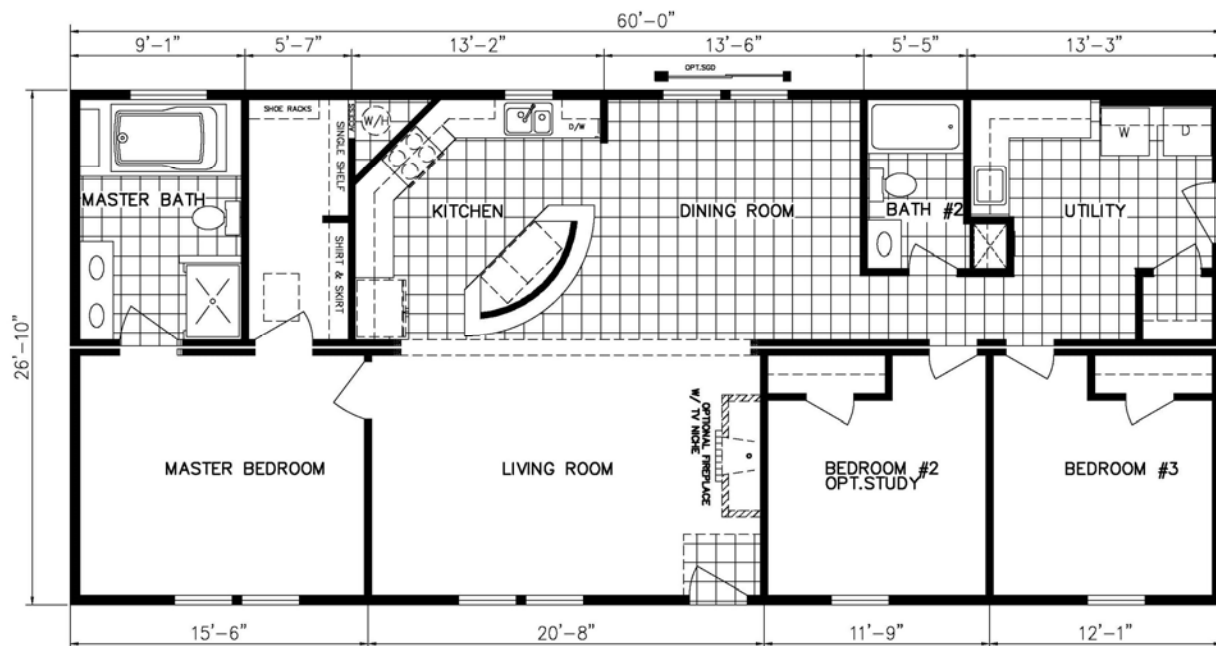
Approx. 1476 Sq.Ft. (Includes Porch)



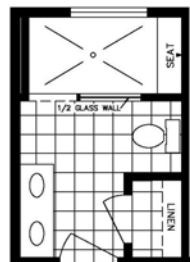
Preferred Series by Holmes Building Systems



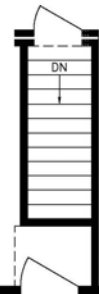
Elevation Shown with Optional and On-Site Builder Supplied Items. Consult Your Builder for Pricing.



OPT #1 MASTER BATH



OPT#2 MASTER BATH



OPTIONAL BASEMENT ENTRY



Augusta

Model 6028L HBSP R

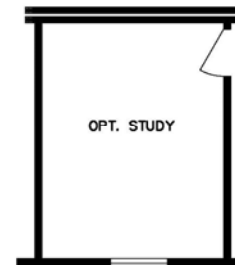
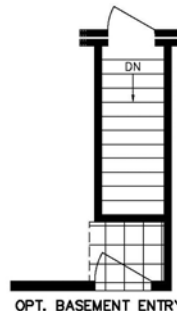
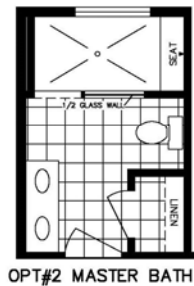
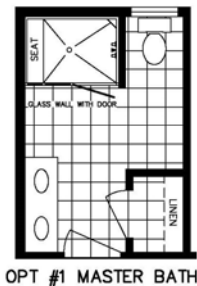
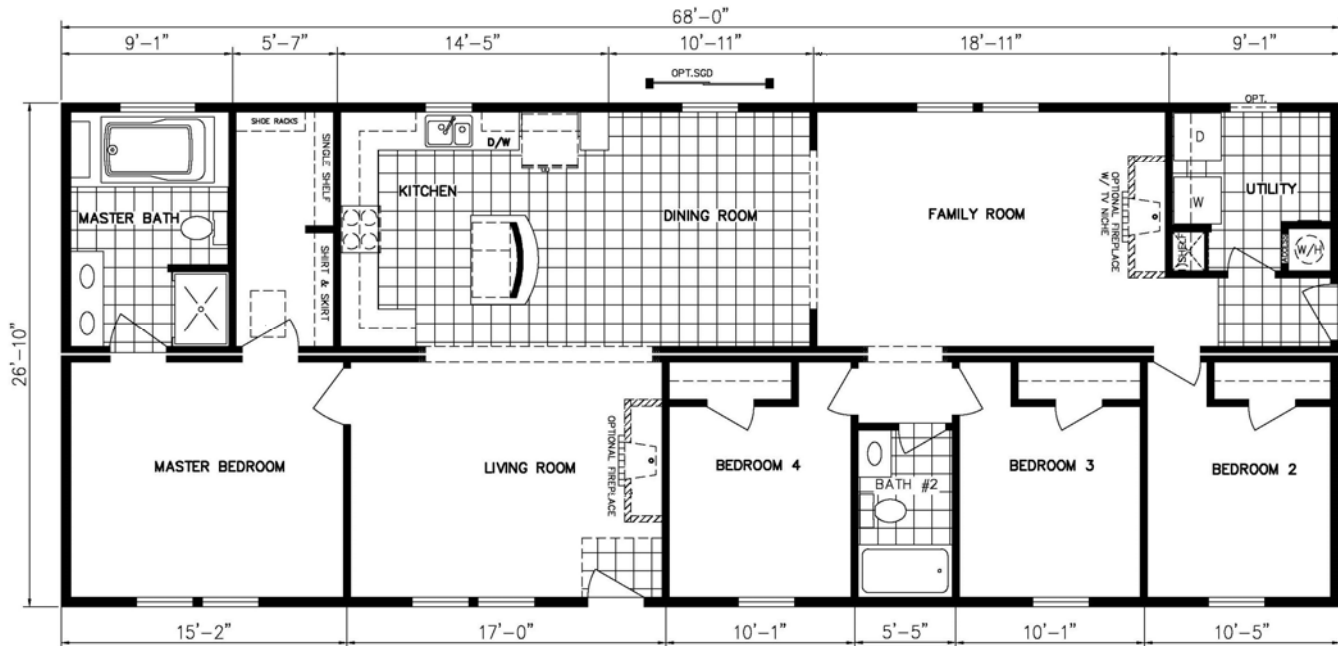
Approx. 1610 Sq.Ft.



Preferred Series *By Holmes Building Systems*



Elevation Shown with Optional and On-Site Builder Supplied Items. Consult Your Builder for Pricing.



Oakmont
 Model 6828B HBSP R
 Approx. 1824 Sq.Ft.



Preferred Series by Holmes Building Systems



Elevation Shown with Optional and On-Site Builder Supplied Items. Consult Your Builder for Pricing.



Pebble Beach

Model 6028H HBSP R

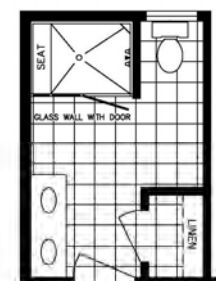
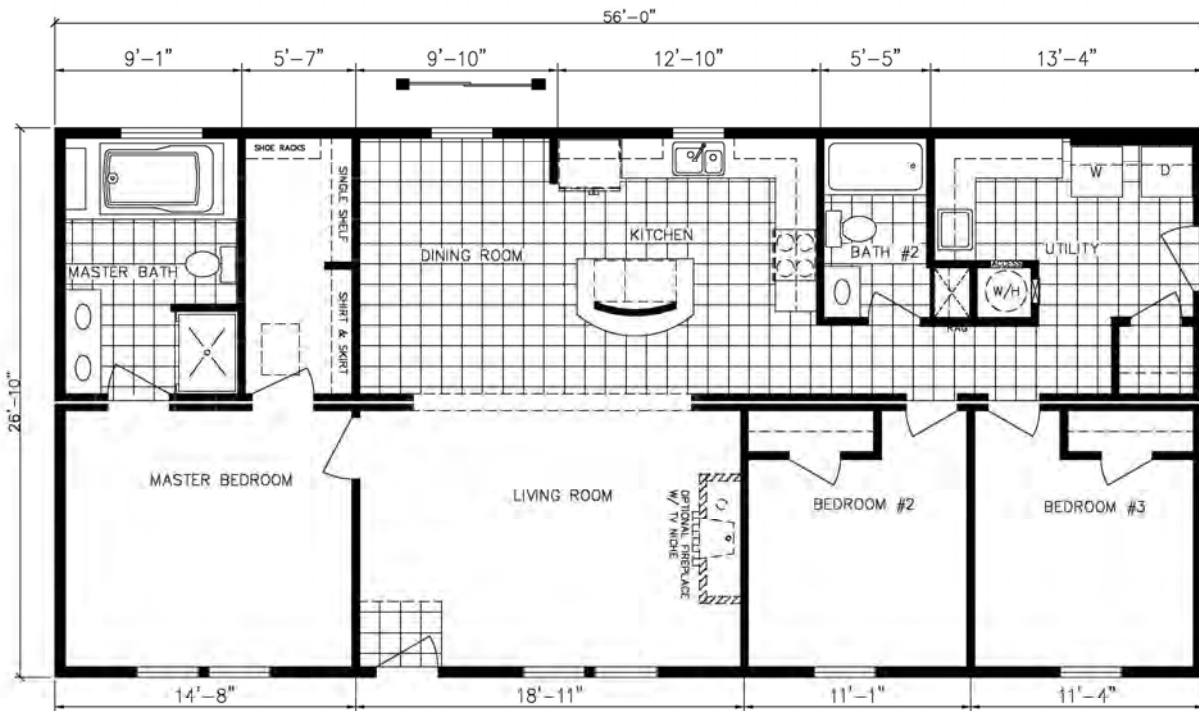
Approx. 1610 Sq.Ft.



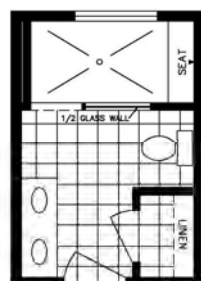
Preferred Series by Holmes Building Systems



Elevation Shown with Optional and On-Site Builder Supplied Items. Consult Your Builder for Pricing.



OPT #1 MASTER BATH



OPT#2 MASTER BATH



OPT. STUDY
ILO BEDROOM #2

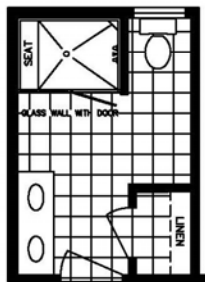
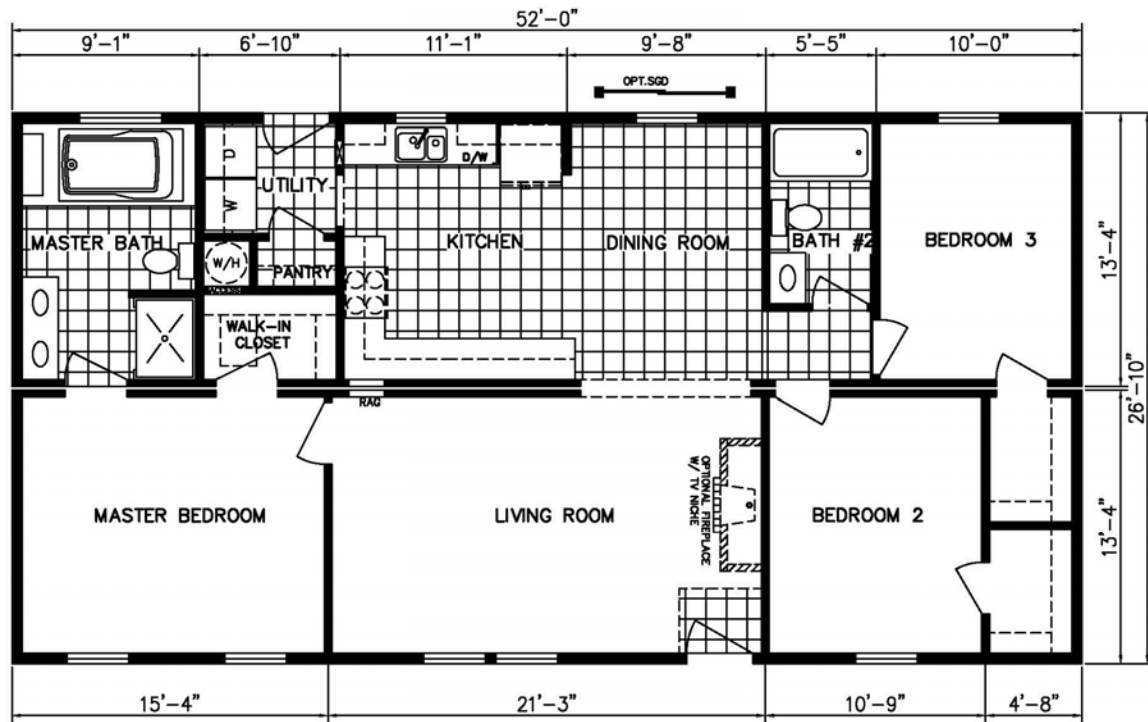


Shadow Creek

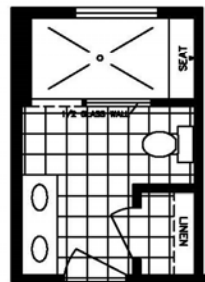
Model 5628C HBSP R

Approx. 1503 Sq.Ft.

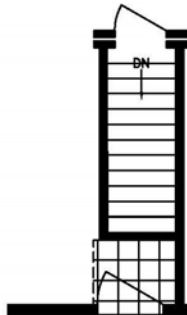
Preferred Series *by Holmes Building Systems*



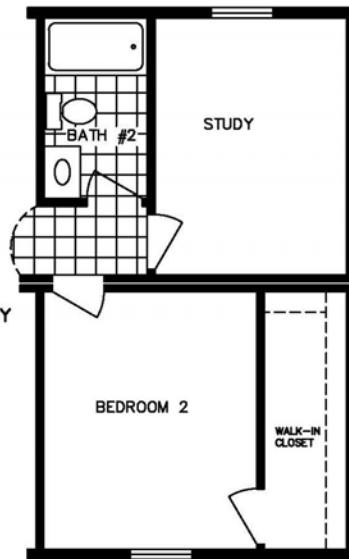
OPT #1 MASTER BATH



OPT#2 MASTER BATH



OPT. BASEMENT ENTRY



OPT. STUDY



Elevation Shown with Optional and On-Site Builder Supplied Items. Consult Your Builder for Pricing.

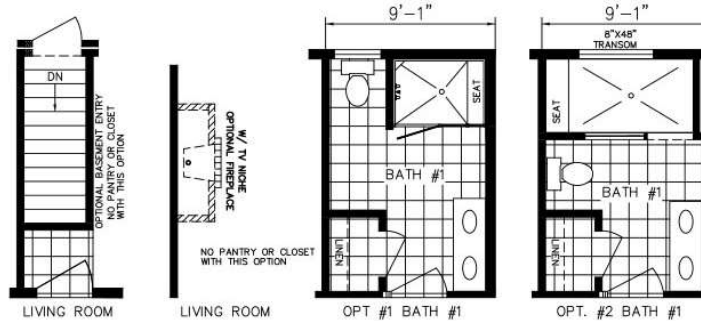
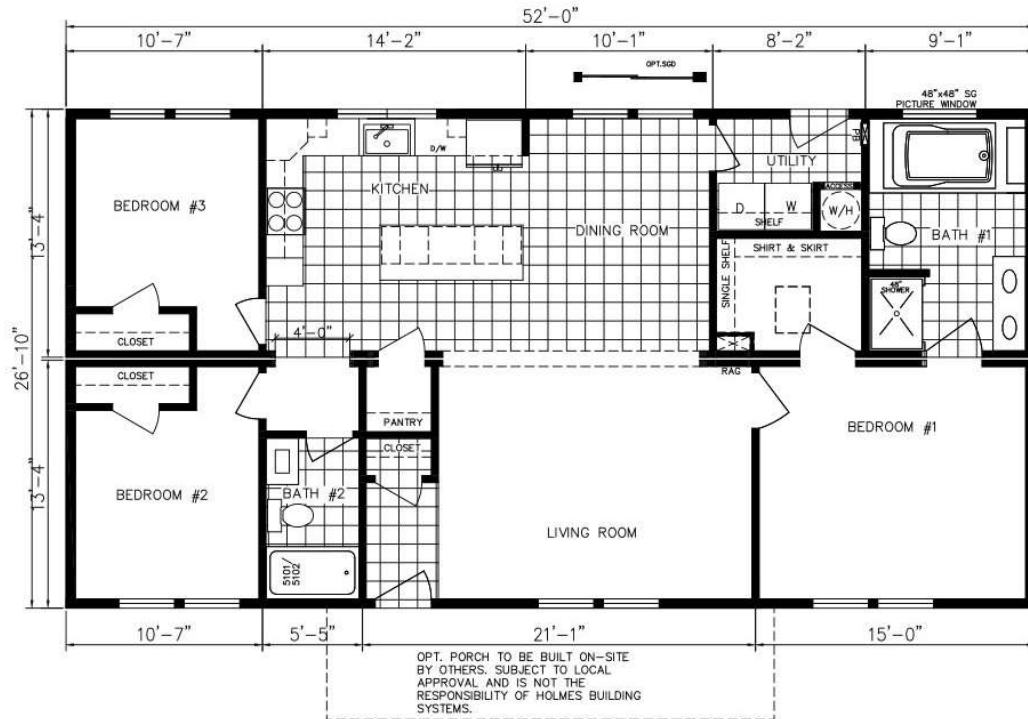


Somerset Hills

Model 5228D HBSP R

Approx. 1395 Sq.Ft.

Preferred Series *by Holmes Building Systems*



Elevation Shown with Optional and On-Site Builder Supplied Items. Consult Your Builder for Pricing.



Suncrest Ridge

Model 5228E HBSP R

Approx. 1395 Sq.Ft.

Preferred Series *by Holmes Building Systems*



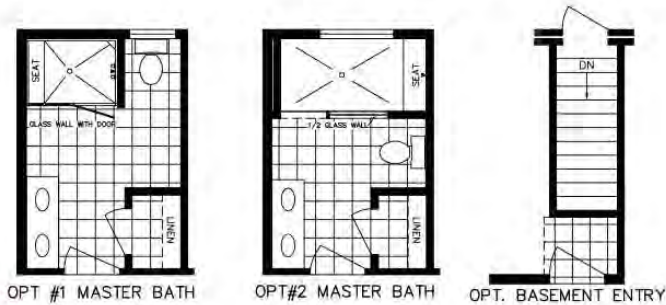
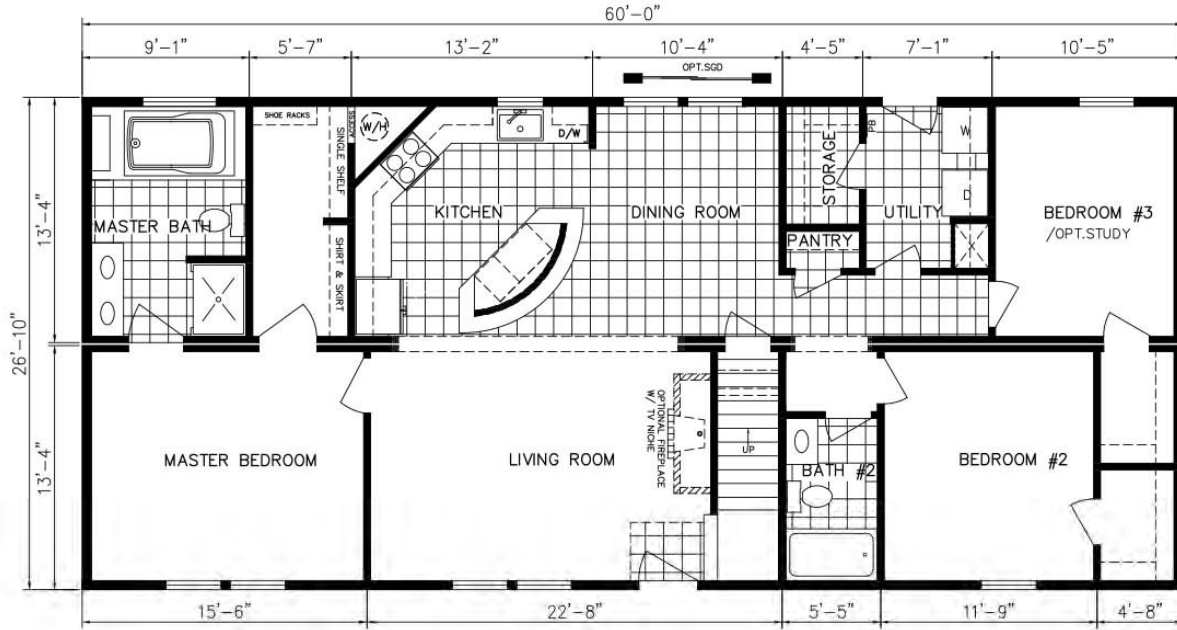
Elevation Shown with Optional and On-Site Builder Supplied Items. Consult Your Builder for Pricing.



Diamond Creek

HBSP 5628D BR
Approx. 1503 SqFt

Preferred Series by Holmes Building Systems



Elevation Shown with Optional and On-Site Builder Supplied Items. Consult Your Builder for Pricing.



Double Eagle

Model 6028K HBSP R

Approx. 1610 Sq.Ft.

Preferred Series by Holmes Building Systems

Highlighted Interior Standards

Stainless Steel Kitchen Appliances



64/40 Stainless Steel Kitchen Sink



Raised Wall Cabinet Over Range



Laminate Kitchen Countertop with Ideal Edging and Full Ceramic Backsplash



Double Trash Can Base Cabinet & Pot and Pan Drawer Base Cabinet



Shoe Rack with Shirt & Skirt Shelves in Master Bedroom Closet



Ideal Edge



Preferred Series by Holmes Building Systems

Highlighted Interior Standards

Nickel T-Bar Cabinet Pulls



White Square Bowl Cultured Marble Bath Vanities



48" Fiberglass Shower per plan



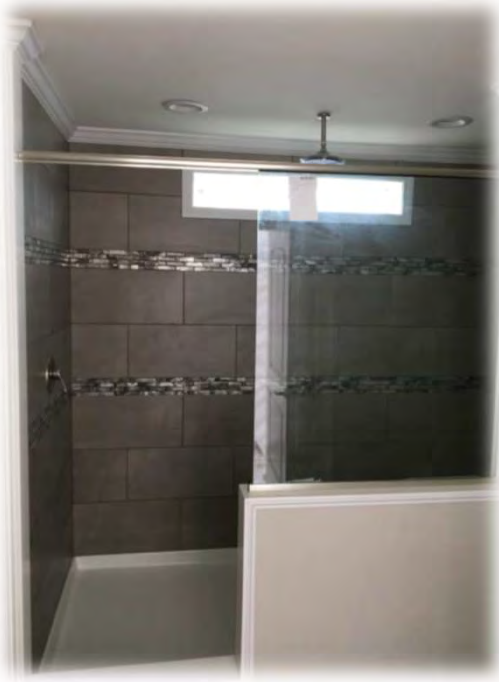
Hall Bath 60"
Fiberglass
Tub/Shower



Preferred Series by Holmes

Popular Options Available per Plan

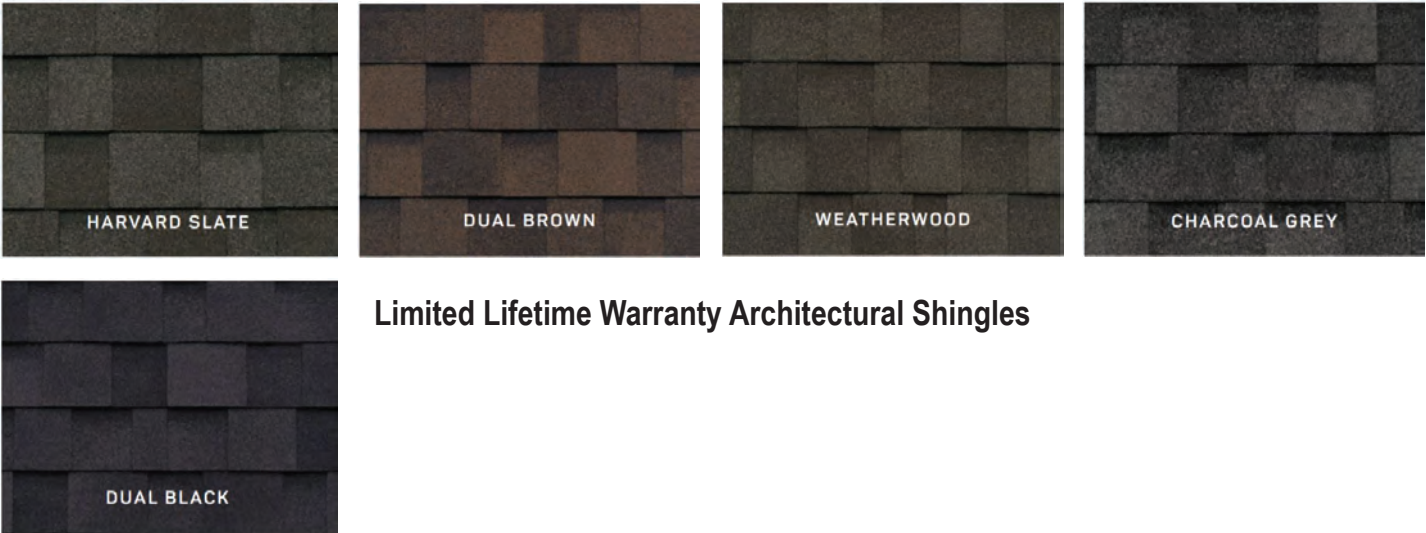
8' Ceramic Shower in Optional Master Bath w/ Two Shower Heads & Transom Window



60" x 43" One Piece Fiberglass Tiled Shower Unit with Bench Seat and Glass Door



Preferred Series Décor Choices

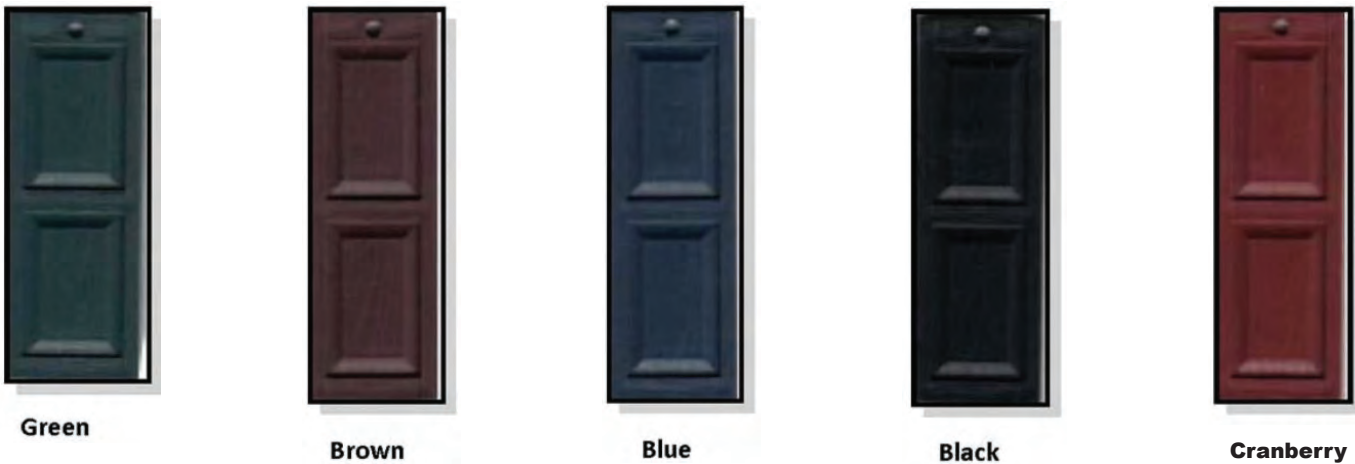


Limited Lifetime Warranty Architectural Shingles

Double 5 DL Vinyl Siding



Vinyl Shutter Selections



* Some items shown and listed are optional. All items and options not available on all models. Please check with your salesman for availability and pricing. © 2025 Holmes Building Systems, LLC

Shaker Style Kitchen & Bath Cabinets

BLACK RAVEN



WHITE



GRAY



Door & Drawer
Cabinet Hardware



Laminate Ideal Edge



Laminate Countertop with Ideal Edging

Calcutta Marble- 3460



Fantasy Marble- 9302



Antique Mascarello- 3466



Kitchen Backsplash Glass Mosaic Ceramic

Triton (AG01)



Galatea (AG03)

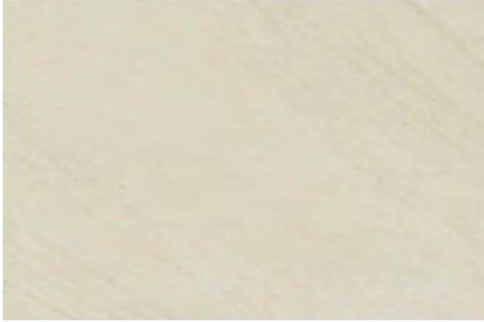


** Some items shown and listed are optional. All items and options not available on all models. Please check with your salesman for availability and pricing.*

Ceramic Shower Tile

12"x 24"

White



Gray



Congoleum Vinyl Flooring



LX 275 Barn Wood
Vintage White



LX 277 Barn Wood
Greige

Optional Vinyl Plank Flooring



154 Almond Oak



5091 Lighthouse



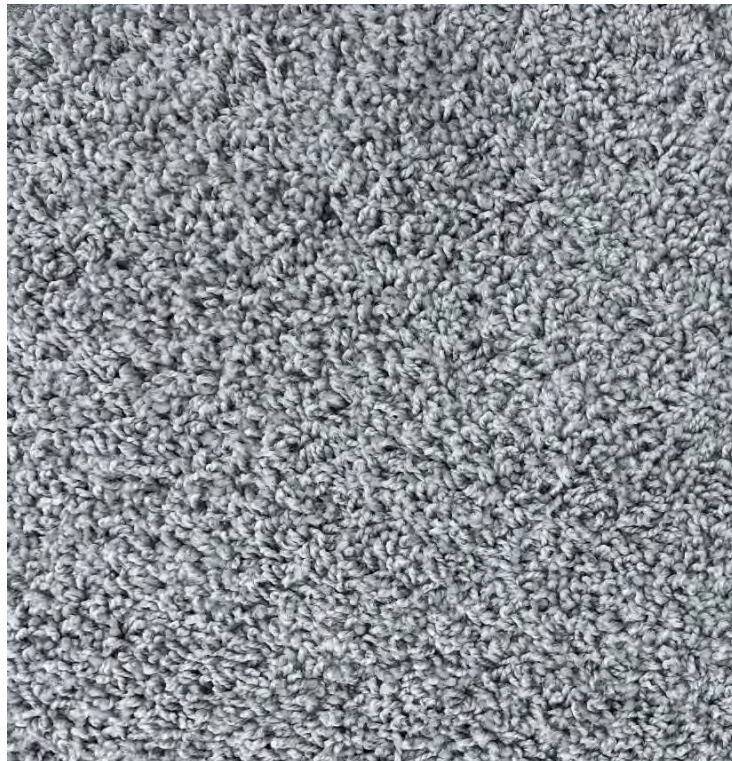
556 Smoky Oak

** Some items shown and listed are optional. All items and options not available on all models. Please check with your salesman for availability and pricing.*

25 oz Carpet



TAN



GRAY

** Some items shown and listed are optional. All items and options not available on all models. Please check with your salesman for availability and pricing.*

Popular Options Available per Plan



Ventless Gas Fireplace w/ TV Niche & White Bookcase Cabinetry
(Can also be ordered without cabinetry. Check with your salesman
for location and availability)

Highlighted Exterior Features

Standard Window Gridless
with 3 ½" Lineals Front
Door Elevation



Standard Window
Gridless with Shutters
Front Door Elevation





Your approved Holmes Building Systems Home Builder:



Holmes Building Systems, LLC. 2863 Old Plank Rd. Robbins, NC 27325

www.Holmesmodular.com

The floor plans & elevations are for illustration purposes only. Refer to working drawings for actual dimensions. © 2024 Holmes Building Systems, LLC