

# Indoor Services – What to Expect



**Woodbury United Methodist Church**



**30 September 2020**

**Version 1.0**



# Indoor Worship Services

## Summary of What to Expect

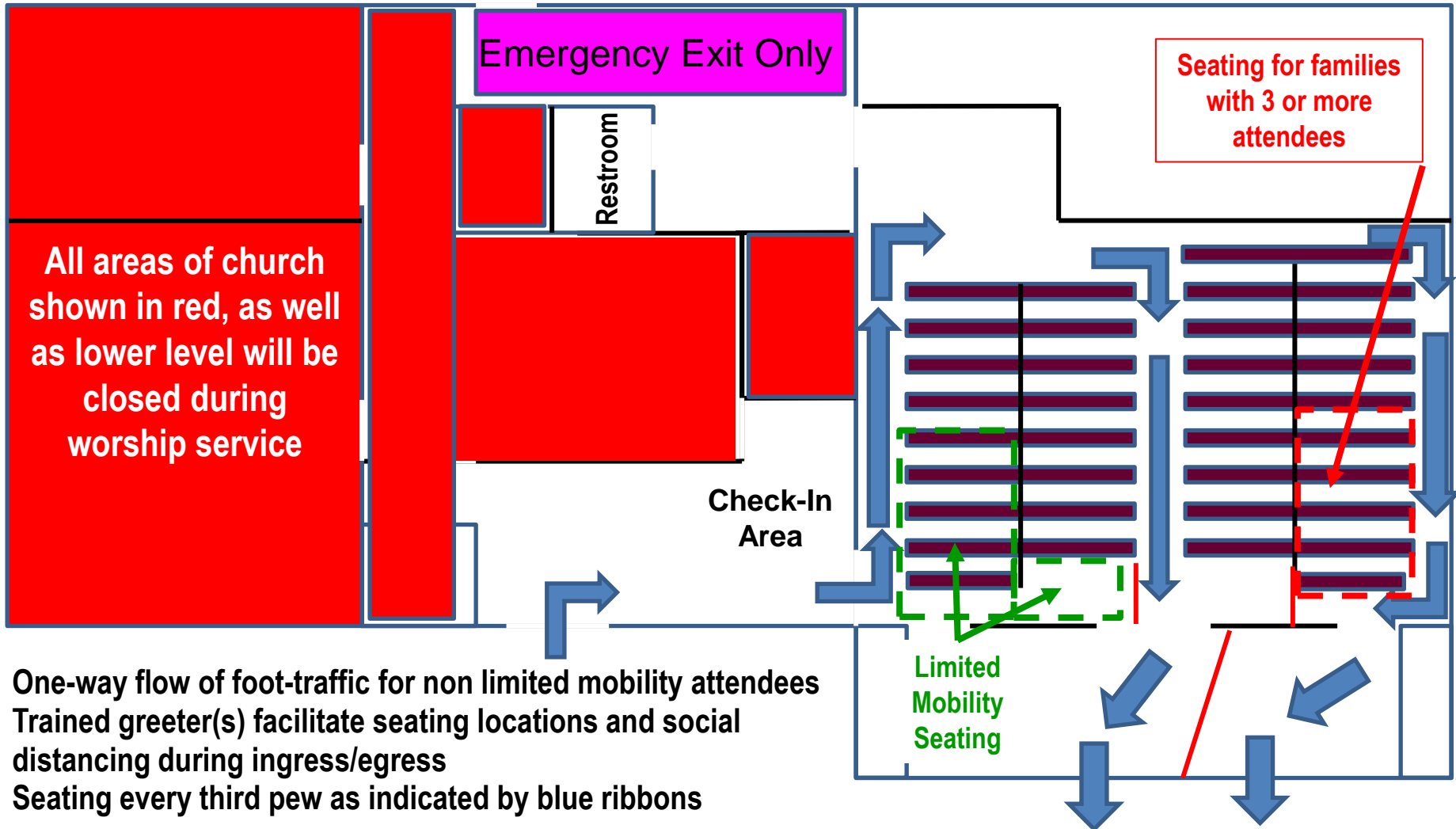
---



- Services be held indoors at 10:30am starting October 4<sup>th</sup>. Recorded service will premier online at 4pm; audio-only broadcast will be at 6pm.
- One-way flow of foot traffic (see slide 3). Enter via office doors; exit via Narthex doors. Limited mobility attendees may enter/exit via office doors.
- Limited mobility attendees and companions are encouraged to sit in southwest corner of the sanctuary (nearest check-in)
- Seating will be limited to every third pew as indicated by blue ribbons (see slide 4)
- Open pews have designated occupancy to ensure ~7-8 ft social distance between family units. Families with 3 or greater attendees must sit on far northeast corner of the sanctuary.
- Worship team (Pastor, Liturgist, singer(s)) will be at least 9 ft from congregation. Speakers/singers will be behind plexiglass barriers that are at least 18 ft from the congregation. (see slide 4)
- Church's office area and lower level will be closed
- Attendees asked to bring their own masks and printed bulletin.
- Service restrictions in compliance with NYAC guidelines (see slide 5)
- Enhanced ventilation will be employed.

# Selected Ingress/Egress Flow Pattern

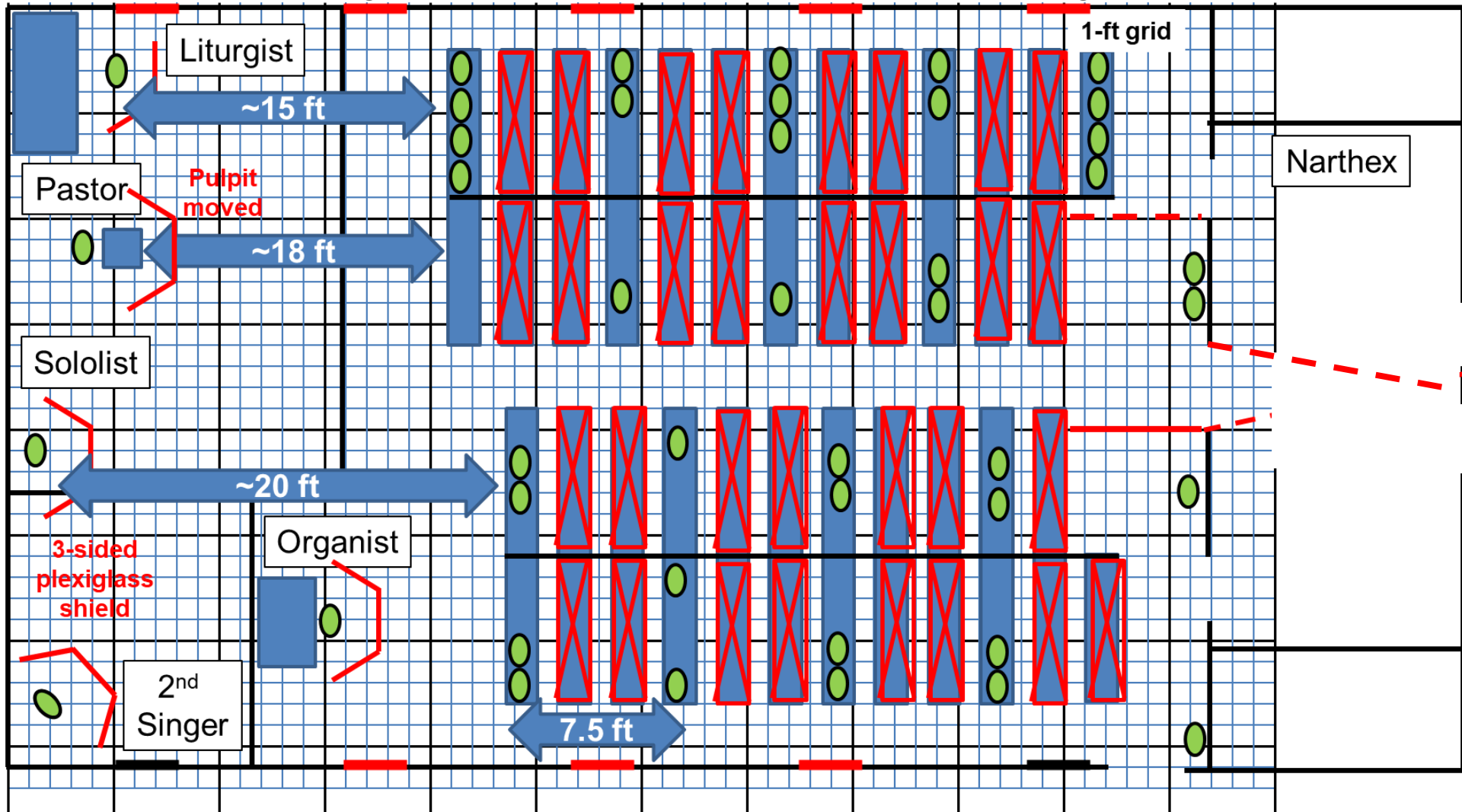
## One-Way Flow Ingress/Egress to Ensure Social Distancing





# Selected Sanctuary Floor Plan

- 50+ person capacity with every 3rd pew and 6-8 people in balcony;
- >6 ft distancing between families; >15 ft from speakers/singers)



# Indoor Services – Restrictions

- Anyone that is sick (or has been in close contact with a person diagnosed with COVID-19 within the previous 14 days) should stay at home and enjoy recorded service broadcasts
- While not required, we encourage vulnerable church family members to stay safe at home
- Masks must be worn at all times, except Pastor, liturgist, and soloist when speaking/singing
- At least 6 feet social distance between families; children must remain with parent(s) at all times
- No congregational singing
- Personal Bibles/hymnals only



**THE WOODBURY  
UNITED METHODIST CHURCH**

**With Care, Concern  
& Love Recommends That**  
Persons in Vulnerable Categories  
Of 65 years or older  
Or under 2 years  
&/or with Significant Pre-existing  
Health Conditions

**STAY SAFE @ HOME**

*Because We  
Love You!*

