

Our Partners



Donate NOW!



[Paypay.me/peopleinpovertylegal](https://www.paypay.me/peopleinpovertylegal)

Checks can be made payable to:
People In Poverty Legal Group
Mail to P.O. Box 442 Jackson, MS
39205

**Help Us Reach Our Goal of
\$500,000!**

People In Poverty Legal Group

"Protecting the constitutional rights for all
citizens regardless of economic status."

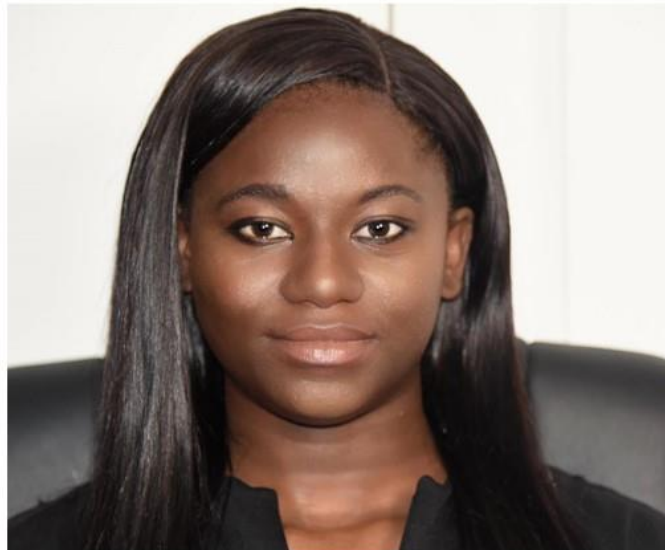
**We Are NOT Alone in This
Journey**

Contact Us

P: 601-850-7624 | F: 601-890-
7624

peopleinpovertylegalgroup@gmail.com
peopleinpovertylegalgroup.godaddysites.com

**Together, We
Can.**





Revenue for Relatives

Provide financial monthly assistance to relatives who are granted Durable Legal Custody of a child or children in Hinds, Madison, and Rankin County, Mississippi.



Placement for Parents

Provides safe and stable housing for parents who enter into a Service Agreement with the Mississippi Department of Child Protection Services.

Year 1- 100% of rent is paid by PIPLG

Year 2- Tenant pays 100% of rent, with utility assistance from PIPLG, if proof of steady income is provided.



"His Will"

Assists seniors with documenting wishes for their finances and property. This program accelerates the probate process, reduces confusion, and ensures final wishes are observed.



Discharge Documentation

Financially fund ex-offender's costs for their birth certificate and driver's license. Also, assist with applying for the ex-offender's social security card, so the ex-offender can secure gainful employment.



Haircuts for Children in CPS Custody

PIPLG partners with local barbers to provide monthly FREE haircuts to children in CPS custody.



Pickup for Parents

Provides safe and reliable transportation to parents who child(ren) is in CPS custody or case is being monitored by CPS to and from their place of employment and mental health appointments.