

greenworks®



EN VACUUM CLEANER

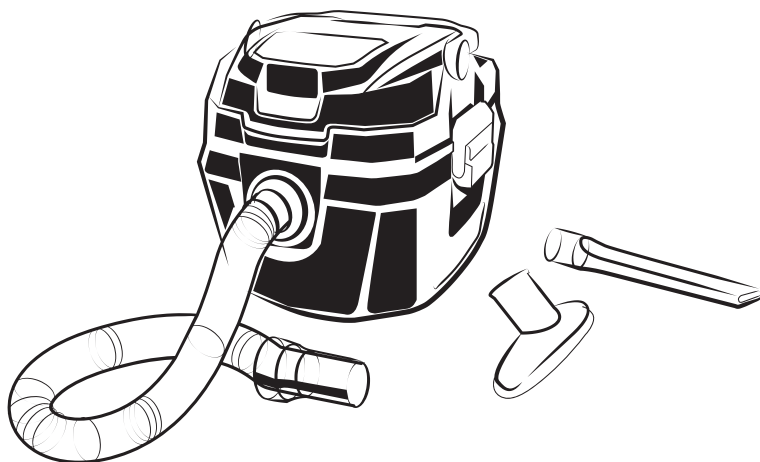
OPERATOR MANUAL

FR ASPIRATEUR

MANUEL OPÉRATEUR

ES ASPIRADOR

MANUAL DEL OPERARIO



VUG302

1	Description.....	4	8.4	Install the foam filter.....	7
1.1	Intended use.....	4	8.5	Insert the hose.....	7
1.2	Overview.....	4	8.6	Install the battery pack.....	7
2	General power tool safety warnings.....	4	8.7	Remove the battery pack.....	8
2.1	General safety rules.....	4	9	Operation.....	8
3	Proposition 65.....	5	9.1	Start the machine.....	8
4	Child Safety.....	5	9.2	Stop the machine.....	8
5	Symbols on the product.....	6	9.3	Blowing feature.....	8
6	Risk levels.....	6	9.4	Operation tips.....	8
7	Environmentally safe battery disposal.....	6	10	Maintenance.....	8
8	Installation.....	7	10.1	Clean the filter.....	8
8.1	Unpack the machine.....	7	10.2	Clean the machine.....	9
8.2	Install the cartridge filter.....	7	11	Store the machine.....	9
8.3	Remove the cartridge filter.....	7	12	Troubleshooting.....	9
			13	Technical data.....	9
			14	Limited warranty.....	9
			15	Exploded view.....	11

1 DESCRIPTION

1.1 INTENDED USE

This vacuum cleaner is intended for vacuuming dust in domestic use. You can also use it to blow debris.

1.2 OVERVIEW

Figure 1

1	Handle
2	Battery door
3	Upper latch
4	Lower latch
5	Collection tank
6	On/off button
7	Hose storage
8	Blowing port
9	Vacuumping port
10	Accessory holder
11	Hose
12	Cartridge filter
13	Foam filter
14	Utility nozzle
15	Crevice tool

2 GENERAL POWER TOOL SAFETY WARNINGS

▲ WARNING

Read all safety warnings and all instructions. Failure to follow the warnings and instructions may result in electric shock, fire and/or serious injury.

Save all warnings and instructions for future reference.

The term "power tool" in the warnings refers to your battery-operated (cordless) power tool.

2.1 GENERAL SAFETY RULES

▲ WARNING

READ AND UNDERSTAND ALL INSTRUCTIONS BEFORE USING THIS PRODUCT. Failure to follow all instructions listed below may result in electric shock, fire, and/or serious personal injury.

- Use only identical manufacturer's replacement parts and accessories. Use of any other parts may create a hazard or cause product damage.
- Always wear safety glasses with side shields marked to comply with ANSI Z87.1. Everyday glasses have only impact resistant lenses. They are NOT safety glasses. Following this rule will reduce the risk of eye injury. Use face mask if operating in dusty work spaces.
- Do not use in rain.
- Keep all bystanders, children, and pets at least 50 ft. away.
- Do not use the appliance for any job except that for which it is intended.
- Avoid Unintentional Starting – Do not carry appliance with fingers on the switch. Be sure the battery is removed while transporting.
- Don't overreach - Keep proper footing and balance at all times.
- Stay alert - Watch what you are doing. Use common sense. Do not operate this unit when you are tired, ill or under the influence of alcohol, drugs or medication.
- Always store idle appliance indoors - When not in use, appliance should be stored indoors in a dry place, out of reach of children.
- Check Damaged Parts – Before further use of the appliance, a guard or other part that is damaged should be carefully checked to determine that it will operate properly and perform its intended function. Check for alignment of moving parts, binding of moving parts, breakage of parts, damaged mountings, and any other condition that may affect its operation. A guard or other part that is damaged should be properly repaired or replaced by an authorized service center unless indicated elsewhere in this manual.
- Remove or disconnect battery before servicing, cleaning or removing material from the appliance.
- Do not run the wet/dry vacuum unattended.
- Do not vacuum, or use this wet/dry vacuum near liquids, gases, or explosive vapours like gasoline or similar fuels, lighter fluid, cleaners, oil-based paints, natural gas or hydrogen.
- Do not vacuum or use this wet/dry vacuum near explosive dusts like coal dust, magnesium dust, grain dust, or gunpowder as sparks inside the motor can ignite flammable vapours or dust.
- Do not vacuum burning or smoking items such as cigarettes, matches, or hot ashes.
- Do not expose to rain. Store indoors.
- Do not handle the battery or the wet/dry vacuum with wet hands.
- To reduce the risk of health hazards from vapours or dust, do not vacuum toxic materials.
- Do not use or store near hazardous materials.
- Do not use this wet/dry vacuum with a torn filter or without installing the filter except when vacuuming liquids as described in the operation section of this manual.
- Do not use the wet/dry vacuum as a toy. Pay particularly close attention when it is being used by or near children.

- Turn off the wet/dry vacuum before inserting the battery. Turn off switch before removing battery pack.
- Do not put any objects into the ventilation openings. Do not vacuum with any ventilation openings blocked.
- Keep free of dust, lint, hair or any other items that may reduce the air flow.
- Keep hair, loose clothing, fingers, and all body parts away from opening and moving parts.
- To reduce the risk of falling, use extra care when cleaning on stairs.
- Do not use to pick up flammable or combustible liquids, such as gasoline, or use in areas where they may be present.
- Always install float before any wet pick up operation.
- For household use only.
- To reduce the risk of electric shock, remove the battery pack before cleaning or servicing.
- Do not use without filters in place.
- Do not dispose of the batteries in a fire. The cells may explode. Check with local codes for possible special disposal instructions.
- Do not open or mutilate the batteries. Released electrolyte is corrosive and may cause damage to the eyes or skin. It may be toxic if swallowed.
- Exercise care in handling batteries in order not to short the battery with conducting materials such as rings, bracelets, and keys. The battery or conductor may overheat and cause burns.
- Dress Properly – Do not wear loose clothing or jewelry. They can be caught in moving parts. Use of rubber gloves and substantial footwear is recommended when working outdoors. Wear protective hair covering to contain long hair.
- Do not add unnecessary force to your appliance – It will do the job better and with less likelihood of a risk of injury at the rate for which it was designed.
- Recharge only with the charger specified by the manufacturer. A charger that is suitable for one type of battery pack may create a risk of fire when used with another battery pack.
- When battery pack is not in use, keep it away from other metal objects, like paper clips, coins, keys, nails, screws or other small metal objects, that can make a connection from one terminal to another. Shorting the battery terminals together may cause a fire.
- Under abusive conditions, liquid may be ejected from the battery; avoid contact. If contact accidentally occurs, flush with water. If liquid contacts eyes, additionally seek medical help. Liquid ejected from the battery may cause irritation or burns.
- Do not use a battery pack or appliance that is damaged or modified. Damaged or modified

batteries may exhibit unpredictable behavior resulting in fire, explosion or risk of injury.

- Do not expose a battery pack or appliance to fire or excessive temperature. Exposure to fire or temperature above 265°F (130°C) may cause explosion.

When using as blower :

- Direct air discharge only at work area.
- Do not use wet/dry vacuum as a sprayer.
- Do not direct air at bystanders.
- Keep children away when blowing.
- Wear safety goggles.
- Use this wet/dry vacuum only as described in this manual.
- Observe the warnings that appear on the motor housing of this wet/dry vacuum.

▲ CAUTION

The hose contains electrical connections:

- do not use to suck up water (for vacuum cleaners only).
- do not immerse in water for cleaning.
- the hose should be checked regularly and must not be used if damaged.

3 PROPOSITION 65

▲ WARNING

This product contains a chemical known to the state of California to cause cancer, birth defects or other reproductive harm. Some dust created by power sanding, sawing, grinding, drilling, and other construction activities contains chemicals known to cause cancer, birth defects or other reproductive harm. Some examples of these chemicals are:

- Lead from lead-based paints;
- Crystalline silica from bricks and cement and other masonry products;
- Arsenic and chromium from chemically treated lumber.

Your risk of exposure to these chemicals varies depending on how often you do this type of work. To reduce your exposure to these chemicals, work in a well-ventilated area, and work with approved safety equipment, such as dust masks that are specially designed to filter out microscopic particles.

Save these instructions.






4 CHILD SAFETY

Tragic accidents can occur if the operator is not aware of the presence of children.

- Keep children out of the working area and under the watchful care of a responsible adult.
- Do not allow children under the age of 14 to operate this machine. Children who are 14 years of age and older must read and understand the operating instructions and safety rules in this manual and must be trained and supervised by a parent.
- Stay alert, and turn the machine off if a child or any other person enters the working area.
- Use extreme care when approaching blind corners, doorways, shrubs, trees, or other objects that may obscure your view of a child who may run into the path of the machine.




5 SYMBOLS ON THE PRODUCT

Some of the following symbols may be used on this product. Please study them and learn their meaning. Proper interpretation of these symbols will allow you to operate the product better and safer.

Symbol	Explanation
V	Voltage
A	Current
Hz	Frequency (cycles per second)
W	Power
min	Time
---	Type or a characteristic of current
	Precautions that involve your safety.
	Read and understand all instructions before operating the product, and follow all warnings and safety instructions.
	Wear eye and ear protection.
	Thrown objects can ricochet and result in personal injury or property damage. Wear protective clothing and boots.
	Keep all bystanders at least 15m away.

6 RISK LEVELS

The following signal words and meanings are intended to explain the levels of risk associated with this product.

SYMBOL	SIGNAL	MEANING
	DANGER	Indicates an imminently hazardous situation, which, if not avoided, will result in death or serious injury.
	WARNING	Indicates a potentially hazardous situation, which, if not avoided, could result in death or serious injury.
	CAUTION	Indicates a potentially hazardous situation, which, if not avoided, may result in minor or moderate injury.
	CAUTION	(Without Safety Alert Symbol) Indicates a situation that may result in property damage.

7 ENVIRONMENTALLY SAFE BATTERY DISPOSAL



The toxic and corrosive materials below are in the batteries used in this machine: **Lithium-Ion, a toxic material.**

WARNING

Discard all toxic materials in a specified manner to prevent contamination of the environment. Before discarding damaged or worn out Li-ion battery, contact your local waste disposal agency, or the local Environmental Protection Agency for information and specific instructions. Take the batteries to a local recycling and/or disposal center, certified for lithium-ion disposal.

▲ WARNING

If the battery pack cracks or breaks, with or without leaks, do not recharge it and do not use. Discard it and replace with a new battery pack. **DO NOT TRY TO REPAIR IT!** To prevent injury and risk of fire, explosion, or electric shock, and to avoid damage to the environment:

- Cover the terminals of the battery with heavy-duty adhesive tape.
- **DO NOT** try to remove or destroy any of the battery pack components.
- **DO NOT** try to open the battery pack.
- If a leak develops, the released electrolytes are corrosive and toxic. **DO NOT** get the solution in the eyes or on skin, and do not swallow it.
- **DO NOT** put these batteries in your regular household trash.
- **DO NOT** incinerate.
- **DO NOT** put them where they will become part of any waste landfill or municipal solid waste stream.
- Take them to a certified recycling or disposal center.

8 INSTALLATION

- Replace the battery pack or the charger immediately if the battery pack or charger cord is damaged.
- Exam that the machine is in the OFF status before you install or remove the battery pack.

8.1 UNPACK THE MACHINE**▲ WARNING**

Make sure that you correctly assemble the machine before use.

▲ WARNING

- If the parts have damage, do not use the machine.
- If you do not have all the parts, do not operate the machine.
- If the parts are damaged or missing, speak to the service center.

1. Open the package.
2. Read the documentation in the box.
3. Remove all the unassembled parts from the box.
4. Remove the machine from the box.
5. Discard the box and package in compliance with local regulations.

8.2 INSTALL THE CARTRIDGE FILTER

Figure 2-3

▲ WARNING

Do not use the cartridge filter for liquid vacuuming. For wet vacuum cleaning, install the supplied foam filter.

i NOTE

The filter may come preassembled to the power head.

i NOTE

Reinstall the filter before you use the machine to avoid damage to the blower wheel or motor.

1. Lift the lower latch then pull down the upper latch to remove the collection tank.
2. Turn the machine upside down.
3. Align the grooves on the cartridge filter with the lift ribs on the machine.
4. Slide the cartridge filter over the filter cage.
5. Turn the cartridge filter clockwise to lock the filter into place.

8.3 REMOVE THE CARTRIDGE FILTER

Figure 2-3

1. Turn the cartridge filter counterclockwise.
2. Slide the filter off the cage.

8.4 INSTALL THE FOAM FILTER

1. Remove the cartridge filter.
2. Install a foam filter over the filter cage.

8.5 INSERT THE HOSE

Figure 4

1. Align either of the grooves in the tube with the tabs on the hose.
2. Insert the locking end of the hose into the port on the collection tank and turn clockwise to lock into place.
3. Insert your desired accessory onto the end of the hose securely.

8.6 INSTALL THE BATTERY PACK

Figure 5

▲ WARNING

- If the battery pack or charger is damaged, replace the battery pack or the charger.
- Stop the machine and wait until the engine stops before you install or remove the battery pack.
- Read, know, and do the instructions in the battery and charger manual.

1. Open the battery door.
2. Align the lift ribs on the battery pack with the grooves in the battery compartment.
3. Push the battery pack into the battery compartment until the battery pack locks into place.
4. When you hear a click, the battery pack is installed.
5. Close the battery door.

i TIP

The machine has a battery storage compartment that helps store the battery pack.

8.7 REMOVE THE BATTERY PACK

Figure 5

1. Open the battery door.
2. Push and hold the battery release button.
3. Remove the battery pack from the machine.

9 OPERATION

▲ WARNING

Do not handle battery pack, switch, or machine with wet hands. Do not expose to rain or allow liquid to enter the motor compartment.

9.1 START THE MACHINE

Figure 6

1. Push the on/off button to turn the machine on.

▲ WARNING

Hold the machine with hands during operation.

i NOTE

If you want to start the machine again please wait until the machine completely stops.

9.2 STOP THE MACHINE

Figure 6

1. Set the on/off button to off position.

9.3 BLOWING FEATURE

Figure 7

It can blow sawdust and other debris. Follow the steps below to use your vac as a blower.

1. Install the locking end of hose into the blowing port.
2. Attach the desired accessory to the end of hose.
3. Start the machine.

9.4 OPERATION TIPS

- The filter must always be in correct position to avoid leaks and possible damage to the machine.
- When you use your machine, it will be necessary for you to empty the collection tank and clean the filter at more frequent intervals to maintain peak vac performance.
- When the liquid in the collection tank reaches a predetermined level, the float mechanism will rise automatically to cut off air-flow. This will cause the suction stop and the higher motor noise. When this happens:
 1. Turn off the machine.
 2. Remove the battery pack.
 3. Empty the collection tank.
- Dry the filter after you use the machine to avoid mildew and damage to the machine.

10 MAINTENANCE

▲ CAUTION

Do not let brake fluids, gasoline, petroleum-based materials touch the plastic parts. Chemicals can cause damage to the plastic, and make the plastic unserviceable.

▲ CAUTION

Do not use strong solvents or detergents on the plastic housing or components.

▲ WARNING

Remove the battery pack from the machine before maintenance.

10.1 CLEAN THE FILTER

i NOTE

Allow the filter to dry before you store or picking up debris.

Often clean your filter to maintain peak vac performance.

Clean a dry filter:

- Cleaning should be done outdoors and not in the living quarters.
- You can use a small brush to clean the dust and debris.
- For thorough cleaning of dry filter with fine dust (no debris), run water through it as described under "Cleaning A Wet Filter"

Clean a wet filter:

1. Remove the filter from the machine.

- Run water through the filter from a hose or spigot.

i NOTE

Check the cartridge filter for tears or small holes after cleaning. Do not use a cartridge filter with holes or tears in it. Even a small hole can allow dust to come out of your machine. Replace it immediately.

10.2 CLEAN THE MACHINE

To keep your machine looking its best, clean the outside with a cloth dampened with warm water and mild soap.

To clean the collection tank:

- Dump debris out.
- Wash collection tank with warm water and mild soap.
- You can use a small brush to clean the dust and debris.
- Wipe out with dry cloth.

To disinfect the collection tank:

- Pour 1 gallon of water and 1 teaspoon chlorine bleach into the collection tank.
- Let solution stand for 20 minutes, carefully swishing every few minutes, making sure to wet all inside surfaces of the collection tank.
- Empty collection tank after 20 minutes. Rinse with water until bleach smell is gone. Allow collection tank to dry completely before sealing the motor on the collection tank.

i NOTE

Disinfect the collection tank before storage or as needed.

11 STORE THE MACHINE

i NOTE

Clean the machine before storage.

- Remove the battery pack.
- Let the motor cool.
- Check that there are no loose or damaged components. If it is necessary, replace the damaged components, tighten screws and bolts, or speak to a person of an approved service center.
- Store the machine in a cool and dry location.

12 TROUBLESHOOTING

Problem	Possible cause	Solution
The machine doesn't work.	The switch or motor is defective.	Speak to service center.

Problem	Possible cause	Solution
Dust discharges from exhaust.	The filter has damage.	Replace the filter.
	The filter isn't installed.	Properly reinstall the filter.
	The filter is not functional.	Clean or replace the filter.
	The filter clogs.	Clean or replace the filter.
Loss of suction	The hose connection loose.	Tighten the hose connection.
	The filter clogs.	Clean or replace the filter.
	The collection tank is full.	Empty the collection tank.
	The hose has damage.	Replace the hose.
Static shock	The environment is dry.	Add moisture to air (if practical, use a humidifier).

13 TECHNICAL DATA

Voltage	24/48 V
Vacuum speed	25000 RPM
Tanksize	3 gallons
Max air flow	38 CFM
Suction power	40 W
Weight (without battery pack)	3.9 kg
Seal pressure	28 Inches water lift

14 LIMITED WARRANTY



Greenworks® hereby warranties this product, to the original purchaser with proof of purchase, for a period of four (4) years against defects in materials, parts or workmanship. Greenworks®, at its own discretion will repair or replace any and all parts found to be defective, through normal use, free of charge to the customer. This warranty is valid only for units which have been used for personal use that have not been hired or

rented for industrial/commercial use, and that have been maintained in accordance with the instructions in the owners' manual supplied with the product from new.

ITEMS NOT COVERED BY WARRANTY:

- 1. Any part that has become inoperative due to misuse, commercial use, abuse, neglect, accident, improper maintenance, or alteration; or
- 2. The unit, if it has not been operated and/or maintained in accordance with the owner's manual; or
- 3. Normal wear, except as noted below;
- 4. Routine maintenance items such as lubricants, blade sharpening;
- 5. Normal deterioration of the exterior finish due to use or exposure.

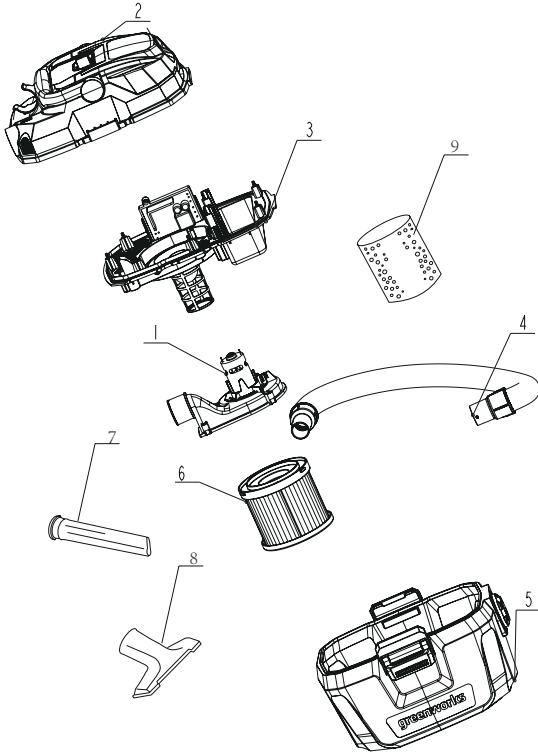
HELPLINE:

Warranty service is available by calling our toll-free helpline, at 1-833-493-5483.

TRANSPORTATION CHARGES:

Transportation charges for the movement of any power equipment unit or attachment are the responsibility of the purchaser. It is the purchaser's responsibility to pay transportation charges for any part submitted for replacement under this warranty unless such return is requested in writing by Greenworks®.

15 EXPLODED VIEW



No.	Part No.	Description	Qty
1	311051160	Blower assembly	1
2	311012553	Top cover assembly	1
3	311022553	Middle cover assembly	1
4	311051160	1.25" Hose assembly	1
5	311031160	Collection tank assembly	1
6	311041160	Cartridge filter	1
7	341301160	Crevice tool	1
8	341311160	Utility nozzle	1
9	349101160	Foam filter	1

Greenworks Tools
 PO Box 1238
 Mooresville, NC 28115

