

Washington Home Owners Association

Your Neighborhood Newsletter



Fall 2024 Issue

President's Message

JOIN WHOA TODAY

WHOA OFFICERS

President: Bob Glaze
glaze@sbcglobal.net
1st Vice President, Anthony Tejada
Anthonyteja@gmail.com
2nd Vice Pres., Melanie Antioquia
Melanietot@yahoo.com
Treasurer, Mike Nolan
Mnolan1953@comcast.net
Recording Secretary, Karen Silva
Karenavon@sbcglobal.net
Secretary, Susan Erb
Susanerb@sbcglobal.net

WHOA BOARD OF DIRECTORS

Diana Chen
dianachenwfg@yahoo.com
Karen Kline
km_kline@comcast.net
Marti Lantz
Volunteerlantz@sbcglobal.net
Arlene Lum
lum88@pacbell.net
Glenn Martin
g.c.martin1829@sbcglobal.net
Melissa Wong
mwonginbox@gmail.com

EVENTS

Monthly HOA Meetings
3rd Wednesday @ 6:30 PM
Marina Community Center

City Council Meetings
1st & 3rd Mondays @ 7 PM
San Leandro City Hall

Council Member Fred Simon
District 4
Community Chat on the 2nd Saturdays @ 8:30 AM @
Greenhouse next to Great Clips

Council Member Victor Aguilar
District 3

WHOA CONTACT INFORMATION

WHOA Website: www.whoasl.com
Address: P.O. Box 4234
San Leandro, CA 94579
Telephone: 510-352-2805
Email: contact@whoasl.com

With this being our last newsletter of the year, we can reflect on a Happy Halloween and know that children from all over appreciated being able to trick or treat. I say from all over, because we know that many of the families came from other communities. What we learned directly from the parents is that they felt safer bringing their family here rather than their own community. Thank you to everyone that made this special holiday one to remember.

After the fun of Halloween, we finally ended the election season and survived. This election seemed to be one of the toughest elections both locally and nationally. It was extremely important that all registered voters take the time and vote. Regrettably, Washington Manor continues to have one of poorest percentages of voter turnout in the city. We can do better and must do better. Your local elections effect the direction your city will move in the coming years and the services you will receive. Your vote allows you to choose the elected officials and the propositions that are in alignment with your wishes and needs. If you don't vote, you allow others to choose for you.

One of the common questions we receive is what does the homeowner's association do for me? It's a simple answer, we help represent your interest on a local and regional basis. We provide a forum for you to meet one on one with your elected and appointed officials, ask questions and get answers directly from the source. Our monthly meetings have provided the opportunity for you to speak directly and hear directly from your Mayor, Councilmembers, Public Works Director, Police Chief, Recreation and Parks Director, Alameda County Flood Control, Oro Loma Sanitary District and many others. Find out information firsthand by attending the WHOA monthly meetings; don't rely on social media for your news and opinions. Be involved, learn from the source, and voice your concerns at the meetings. It's your home and community.

This year we were able to have the rebirth of the Day in the Park, which was attended by over 1,000 people. The event helped bring together the residents of Washington Manor and provided a special event to enjoy Manor Park. The event allowed us to see some of

(Cont'd on Page 7)

Update from Fred Simon, Dist.4 Council Member

Good day Manor residents. Thank you for voting me in for my second term. I will continue to work together with all of you to make the Manor a wonderful place for us all. Feel free to stop by my community chat on the second Saturday of the month at 8:30

AM at the Greenhouse Marketplace near Great Clips to share your ideas or concerns. You can also email me at:
FSimon@sanleandro.org.

Here are some updates on projects and programs.

NAVIGATION CENTER

The City of San Leandro received a \$9.3M grant from the State Project Homekey Program in November 2023 to purchase and renovate the Nimitz Hotel on Lewelling

(Cont'd. on Page 6)

WHOA advocates for improvements and a better quality of life for all residents in the Manor (Districts 3 and 4). Our meetings at the Marina Community Center on the third Wednesdays of each month provide a forum for all Manor residents to voice their concerns and to hear from San Leandro City Staff and others about issues in the community. Your **\$10 per year membership** dues to the WHOA is an investment in the community where you live.



Inside this issue:

DAY IN THE PARK	3
DITP CONTACT LIST	
ABOUT WASHINGTON MANOR	5
PICKETBALL AT THE MANOR	
UPDATE FROM FRED SIMON CONT'D	6
MYSANEANDRO APP	
ABOUT WASHINGTON MANOR CONT'D.	7
PRESIDENT'S MESSAGE (CONT'D)	
FREE BULK PICK-UP	
MANOR LIBRARY INTRODUCES 2 NEW PROGRAMS	8
COMMUNITY CALENDAR	
LOCAL ELECTION RESULTS	9
HELP REBUILD THE MANOR SIGN	
WASHINGTON MANOR RESILIENCE HUB	
COOKING CORNER	
PREVENT IDENTITY THEFT 2D:4D FINGER RATIO	10
HOLIDAY PARTY	



Located in the Washington Manor-Bonaire neighborhood,
we are a private, non-profit preschool through 5th grade school
that has been in operation since 1984.

750 Fargo Ave., San Leandro | 510-582-3273 | info@woodroewoods.org

Early Education	Elementary
<p><u>Preschool</u> ages 2.5 to 4</p> <p><u>Pre-Kindergarten</u> ages 4 to 5</p> <p><u>Early Education Schedule Options:</u> Part-Time: 9:00am to 12:00pm Full-Time: 7:00am -6:00pm</p> <p>Students must be fully potty-trained.</p>	<p><u>Elementary Schedule Options:</u> Academic 8:30am-3:00pm Fulltime 7:00am -6:00pm</p> <p><u>Open House for 2025-2026</u> <u>School Year</u> January 28th, 2025 Kindergarten/1st Grade: 6:15pm 2nd-5th Grade: 7:00pm Adults Only Please</p>

Please visit www.woodroewoods.org/admission
for more information and to add your child(ren) to our
Early Education or Elementary Interest List.
Please indicate you saw our ad in the Manor's HOA Newsletter.



Day in the Park

A tradition returns. WHOA Day in the Park returned on September 7, 2024. An event that began in 1957 with the completion of Washington Manor Park and the dedication celebration, Day in the Park was an annual event hosted by the WHOA for decades. Over the years, the activities may have changed but the focus has always been on celebrating our vibrant neighborhood and fostering community spirit and pride. This year was no exception. It was exciting to see everyone enjoying the park, making new connections and reconnecting with neighbors and friends.

We are so thankful for all of the community support and participation in the revival of DITP. We could not have done it without all of you! The WHOA Board, especially Karen Kline, Arlene Lum, Bridget Salazar, Diana Chen, Susie Erb and Melissa Wong contributed their invaluable experience and hard work to make the event possible. A big thank you to the San Leandro Optimist Club and Litvinchuk

Realty for their generous financial support. Thank you to all the community groups who showcased their organization with amazing, interactive booths and prizes; you made the day special for all. To all the high school volunteers, we are so grateful and appreciative for all of your hard work! Mayor Juan Gonzalez found himself serving BBQ lunch instead of saying a few words at the event. We thank Board member Anthony Tejada and neighbor Basil Wong for spending the day over the grills, cooking burgers and hot dogs for over 1,000 people! As always, Councilman Fred Simon was there to support the WHOA. What a treat it was to see all the dance groups, martial arts groups, dragon and lion dancers, zumba and health fitness presentations. We are living in the midst of some amazing talent and we thank you for sharing with us.

Thank you to the City of San Leandro for sponsoring the Movie in the Park to cap off a fantastic day! Watching Ratatouille on a big screen in the open air was a treat!



East West Kung Fu Academy Lion & Dragon Dancers



Handcrafted Train Ride offered by Joe Litvinchuk

We hope you enjoyed Day in the Park and we look forward to seeing you at next year's event!

Meanwhile, Washington Manor Park has many amenities. We hope to see you take advantage of them.

Support Our Day In the Park Supporters and Performers

The WHOA invites you to patronize our Day in the Park supporters, performers and our newsletter advertisers. below These companies help provide WHOA the resources to help advocate for the community, keep our neighbors informed, and provide events that enable you to connect with our neighbors.

Asian American Cultural
Association of San Leandro
510-895-5200

DC Dance Center
1555 Washington St., SL
510-352-2800

DJ Emet G
510-710-0427
emet1979@yahoo.com

East West KungFu Academy
268 Floresta Blvd., SL
408-507-9901

FoodMaxxl
699 Lewelling Blvd., SL
510-614-7345

Ghiradelli Chocolate
1111 139th Ave., SL
510-346-3146

Iron Core Fitness
14410 Washington Ave., SL
510-560-3689

Joe Litvinchuk,
General Developer
510-719-9455

Litvinchuk Realty
1191 Manor Blvd., SL
510-351-2200

Mike's Feed & Pets
685 E. 14th St., SL
510-638-2005

Oro Loma-Waste Mgmt.
2615 Davis St., SL
510-638-2303

Pallen's Martial Arts
1660 Washington Ave., SL
510-483-6560

San Leandro Manor Library
1241 Manor Blvd., SL
510-577-7971

San Leandro Optimist Club
SL Rifle & Pistol Range
3001 Davis St., SL
510-638-9605

Zumba with Sergio Flores
13855 Catalina St., SL

PupTown



14073 Catalina St, San
Leandro, CA 94577

510-969-4157

Puptownplayspace@gmail.com

Requirements: Minimum 4 months

All dogs must be spayed or neutered by 8 months.

All dogs must be social with dogs & people.

All dogs must be on current vaccinations:

DHLPP

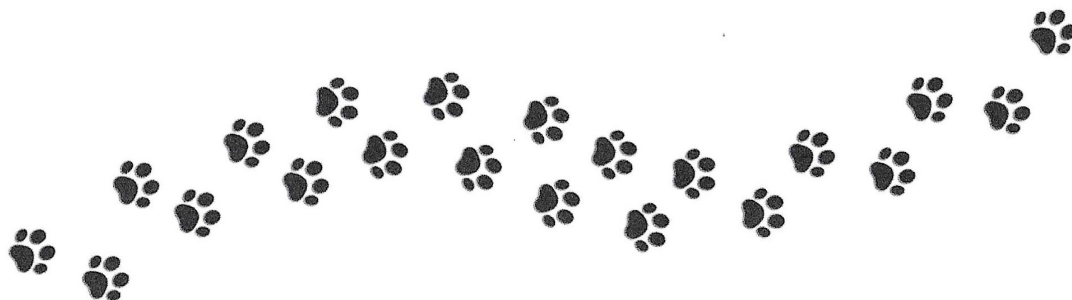
Rabies

Bordetella

Canine Influenza

Flea/Tick Program

**Free evaluation when bringing in
the AD for PupTown.**



With Bow Wow Ventures, your dog will join a trained walker and their pack for 1-hour adventures in the East Bay Regional Parks. We do pick up and drop offs depending on location!

Shasta Marlowe

510-703-8163



About Washington Manor

Like many cities in the area, San Leandro was first inhabited by the Chochenyo and Ohlone people over thousands of years ago. Captain Pedro Fages led a small expedition in 1771 from Monterey up to Northern CA and settled in what is now called San Leandro. The Californios (Spanish colonists and their descendants) who settled in San Leandro were given large land grants by the Mexican Colonial Governors of California after the Mexican Independence from Spain. The Californios found the land very fertile for growing grassland for raising cattle for hides and tallow, which they traded for other products.

During the Gold Rush of the 1850's, people from all over the world came to America, some squatting on San Leandro land that was granted to the Californios. The squatters hunted ducks and geese and sold them in San Francisco at a premium. Farmers soon found that they could grow anything in the fertile flatlands of San Leandro and with easy access to the Bay and railroads, they found shipping the produce to faraway markets was ideal. Although San Leandro had dairy farms, chicken ranches, wheat fields and vegetable farms, San Leandro was most known for its cherry orchards.

In fact, they had such a bumper crop in 1909, they had its first Cherry Festival and dubbed San Leandro as the Cherry City.

MANOR RANCHES, FARMS, AND NURSERIES

Prior to the developers building out the housing tracks in the Washington Manor area, we had our fair share of ranches and farms. Dairy farms were found between Manor Boulevard and Springlake Blvd. around the 880 and 238 freeways. In fact, there was a drive-through milk depot to pick up fresh milk at the location where Faith Fellowship FourSquare Church is now located.

Farmland could be found where Manor Grill and the Manor Square Shopping Center are today. The Washington Manor Park was the Braga Sugar Beet Farm prior to the Washington Home Owners Association purchasing the land to make it into a park. Fritz Stenzel and his wife grew tomatoes and zucchinis at what is now the Stenzel Park and shipped the tomatoes to the Hunts and DelMonte factories for canning.

The Dudley Napp Nursery is a wholesaler selling trees and vegetable plants where the Maple Lane (old Manor

Bowl location) project is now located. We also have the large greenhouses which were owned and operated by multiple Japanese families who grew flowers and vegetables at the Greenhouse Marketplace Shopping Center. Interestingly, the Japanese families were able to maintain ownership of their property while they were sent away to Internment Camps by calling upon their non-Japanese friends to operate and pay their property taxes while they were gone.

MANOR ANNEXED INTO SAN LEANDRO

Washington Manor was considered part of San Lorenzo until 1951 when the Alameda County Board of Supervisors designated boundaries for Washington Manor. Between 1951 and 1958, the WHOA and the Washington Manor Improvement Association issued bonds to improve the area schools and the Washington Manor Park. In 1957, the City of San Leandro annexed the Manor district into the City, but left the debt on the improvement bonds for the Manor residents to repay through property tax assessments.

MANOR STUDENTS ATTEND SAN LORENZO SCHOOLS

When the Manor was part of San Lorenzo, the kids attended San Lorenzo Schools. The annexation of the Manor into the City of San Leandro had nothing to do with the school district as they are autonomous jurisdictions. Unless a child attends one of the private schools, like Woodroe Woods School on Fargo, our kids attend one of the San Lorenzo School schools like Dayton and Corvallis Elementary School, Washington Manor Middle School, and Arroyo High School.

WASHINGTON MANOR HOME BUILDERS

Over 50% of the 6,827 housing units in the Washington Manor were built after WWII between 1950-1959. About 85% of the homes in the Manor was built by McEntyre, who introduced a planned community concept in the 1950's by building homes around centralized shopping areas and a medical center. (torn down in the early 2000's to make way for the new Manor Library) included a general practitioner, a dentist, and a chiropractor for a one-stop shop. The original McEntyre homes were affectionately called Big MACs (3Bed/2Bath), Middle MACs (3Bed/1Bath), and Little MACs (2Bed/1Bath). McEntyre also included three gas stations within a block of each other in the neighborhood (two on the

(Cont'd. on page 7)

Pickleball at Manor Park

Pickleball is a 59-year-old sport that most people have never heard of until recent years. It is a sport played with wiffle-like balls and solid flat paddles. Pickleball uses techniques of a combination of many racket/paddle sports such as ping pong, tennis, and badminton. The game was invented by two families in Washington State to keep their kids busy in the summer. It has become the fastest growing sport in the U.S. for the last six years and continues to grow in

popularity. Pickleball is easy to learn and play, is a very sociable activity, and great exercise for players of all ages. Most people who have tried pickleball find it is a fun sport, but takes diligences to master the game.

Washington Manor Park has six pickleball courts open to the public daily from 8am to 8pm. These courts are very popular and can get busy on weekends and weekday mornings and evenings. As the USA Pickleball Ambassador to San Leandro and the



Pickleball Courts at the Washington Manor Park

founder of the SL Pickleball Community group, Joe Mui offers weekly free pickleball clinics at the Washington Manor Park to help members learn to play safely, cor-

rectly, and to their full potential. To join the SL Pickleball Community group and/or participate in the clinics, send a request to: slpickleballers@gmail.com.

Boulevard into an interim housing and a navigation center for the homeless. Construction started during the Summer of 2024, with a planned opening in early March, 2025. There will be 29 units housing homeless individuals with a drop-in day center that will provide food and bathing and laundry facilities, case management and housing assessments to help the clients transition into permanent housing. The Navigation Center property will be managed by the Housing Consortium of the East Bay (HCEB) and the primary supportive service provider will be Building Futures. The City will make a public announcement when the facility opens, but due to limited parking, only a small opening ceremony will be available for City Council, State and Federal elected officials and non-profit project partners.

After five years as an interim housing and navigation center, the City plans to convert the property into permanent supportive rental housing for homeless and at-risk families.

SHORELINE PROJECT

The Marina Shoreline Development Project includes five hundred housing units, a hotel, a restaurant, small retail space, and a new community park. The project received approval in the Summer, 2022. Cal Coast Companies purchased the single-family homes portion

project (part of the nine-hole golf course) at the end of 2002. Since then, Cal Coast has prepared plans to further subdivide the single-family homes property and applied for building permits to prepare the site for construction. The City provided Cal Coast a short-term loan on the sale of the property. The loan required interest payments and the full amount of the loan due at the end of 2024, but Cal Coast's legal entity defaulted on the loan and filed for Chapter 11 reorganizational bankruptcy. Meanwhile, the company continues to submit its mapping plans and construction permits to the City while it attempts to work through its financial problems. Construction cannot begin until Cal Coast can resolve the legal matters.

MENTAL HEALTH RESPONSE UNIT

The Alternate Response Unit started operation in early November, 2024. They provide real time assistance to those individuals experiencing psychological or social distress. The unit includes a nurse practitioner, a community health worker, and an emergency medical technician paramedic. Call the San Leandro Police non-emergency number on **510-577-2740** to reach the Alternate Response Unit to help manage the following people

with::

Suicidal thoughts
Tendency to harm oneself
Emotional distress
Arguing family members or neighbors needing mediation.

Call **911**, not call the Alternate Response Unit for the following situations:

Medical emergency
Presence of firearms
Someone is harming others
Presence of violence.

Using the Alternate Response Unit in lieu of San Leandro Police will help free up the San Leandro Police resources for more dangerous calls.

GREENHOUSE AMBASSADOR PROGRAM

I have always advocated for the Greenhouse Marketplace to adopt an ambassador program like the Downtown Ambassador Program to help control blight, provide security and manage the homeless problem. Unfortunately, I was recently advised that due to a breakdown in communication between the property owners and the City, the safety ambassador program will not proceed at the Greenhouse Marketplace. I will continue to pursue alternative options, such as unarmed private security, to keep the Greenhouse Marketplace, the Manor as a whole, and our entire city safe until the San Leandro Police is fully staffed.

Meanwhile you can help by contacting the primary property owner/manager of the Greenhouse Marketplace, Weingarten/Kimco, and voice your concern about the safety and cleanliness. Their contact information is 833-800-4343 or email kim-corealty.com.

GREENHOUSE GOODWILL SITE

We continue to work with the property owner/manager (Welling Ltd). to clean up the former Blockbuster Video/Goodwill site on the corner of Washington and Lewelling. To do that, the City's Community Preservation Division Enforcement staff has made daily inspections and issued citations for violations at the time of inspection. Currently, the City has not received any payments towards the citations and after seeking legal advice, has put a lien on the property for \$76,500 owed as of July 1, 2024. In addition, the City's Building division inspected the property and red-tagged the building in Spring, 2022. They also began issuing building code enforcement citations monthly in the Summer, 2024, totaling \$3,000. The building is currently on the market for sale. Hopefully, an interested party will purchase the building and open a new business that will enhance the Greenhouse Marketplace.

MySanLeandro App

You can make a difference in the community. We encourage you to download the MySanLeandro app from the Apple Store or Google Play Store, set up an account, and start reporting a concern you see in the community. To make a report, follow the steps below:

1. Snap a picture and click on the new request icon on the app.
2. Upload your picture.
3. Enter the nearest address of

your request.

4. Select the appropriate request category.
5. Provide a brief description of the complaint.

Once you hit submit, your request will be assigned a work order and routed to the appropriate department to have the problem fixed. You can obtain status of your request by logging into the app.

Examples of concerns to report include: abandoned vehicles, graffiti, illegal dumping or dumping of hazardous materials, pot-holes on the street, overgrown vegetation (more than 6"), uneven sidewalks, street or traffic light outages, animal abuse, etc.

Take pride in your community. Help keep San Leandro pristine by downloading the MySanLeandro app and-



SEE-CLICK-FIX to success.

About Washington Manor (Cont'd. from Page 5)

(corners of Farnsworth & Manor and one at Manor and Inverness) to serve the residents. Other builders in the Manor include Sunnyhaven, Bevilacqua, and Corvallis. Sunnyvale homes (3Bed/2Bath) can be found between Lewelling Blvd., and the Estudillo Canal and Mendocino and Wicks Blvd. Bevilacqua homes (3Bed/2Bath) can be found between Lewelling Blvd., and Vining Drive and Montreal and Wicks Blvd. Corvallis homes (3Bed/1Bath) can be found next to the 880 freeway and between Farnsworth and the Bonaire border.

MANOR DEMOGRAPHICS

The Manor definitely has changed since the homes were built in the 50's. The following demographic information comes from niche.com,

point2homes.com, and data-city.com

Total population	20,272
Manor Households	6,589
Median Age	46.3
Children Under 18	15%
Adults Over 65	19%
Males	50.8%
Females	49.2%
U.S. Born	60%
Foreign Born	40%
Citizens, US Born	58%
Citizen, Foreign Born	31%
Non-English Speaking	16.5%
Asian	42%
Hispanic	27%
White	25%
Portuguese	6.8%
African American	3%
Hawaiian	1%
Two or More Races	2%
Household Income	\$118,906
Home Ownership	73%
K-12 in Private School	46%
College Cert. & Grads	36%

Based on this information, Washington Manor is a very diverse community with 75%

of the community made up of non-white population and 40% of the community foreign born. Many of the households are multi-generational with grandparents living in the same households. Those who move into the Manor tend to stay in the Manor, with 93% of the people residing in the same household as the previous year. The community is much denser in population than the rest of San Leandro, with 9,891 people per square mile as opposed to 6,610 per square mile in other parts of San Leandro.

Education is high in priority as 36% of the community has at least a college certificate or graduated from college and above. Surprisingly, 46% of students K-12 in the Manor are enrolled in private elementary schools as

opposed to 9.9% in San Leandro in general.

Of those who are employed, 74% are white color workers and 16% blue color workers. 10.5% of those employed are entrepreneurs and own their own business.

We have so much diversity in our community. Each family comes with unique and rich cultures. We can enrich ourselves and our neighborhood by getting to know our neighbors and each other's cultures. Start by saying hello to your neighbors in the following languages.

你好(Cantonese)	nay ho
你好 (Mandarin)	nihao
Xin Chao	Vietnamese
안녕하세요	(Korean)
	annyeonghaseyo
Bienvenido	Spanish
Ola	(Portuguese)
Aloha	Hawaiian

President's Message (Cont'd from Page 1)

the different services offered to us by community organizations and talk to fellow neighbors. See Page 3 for more information about the Day in the Park. With the support of you and others, we will continue to bring these activities to you.

On December 7, 2024, we will have our Holiday Neighborhood Roundtable at the Marina Community Center. This is an opportunity for you to meet your neighbors, mingle with your elected and appointed officials. See Pages 10 and 11 for more information on the holiday

party. If this event is anything like last year, this will bring a positive close to the year and give us momentum to make Washington Manor a better place to live, work and play.

CALL TO ACTION

I continue to ask for your support by volunteering and making your \$10 contribution to support the WHOA. The money is an investment in the future of Washington Manor. One current event that needs your help and attention is the Greenhouse Marketplace. The city has been trying to

get the property owners to address safety and upkeep. We need your help to call the primary property owner/manager, Weingarten/Kimco at 833-800-4343 and email the property managers at kimcorealty.com to voice your concern about safety and upkeep. Help us make Greenhouse Marketplace a clean and safe place to shop.

The WHOA is made up of your fellow neighbors who volunteer to provide services to our local community. On a special note, I would like to thank Karen Silva, who has been our Secretary and

newsletter editor. Karen is stepping away from the newsletter, but her efforts will not be forgotten. People like Karen step up and do their best as a volunteer; they are not paid and sometimes receive a thank you as their reward. At times, volunteers might have to endure criticism by others who are not willing to step up to make things better. If you want to see things better, be the solution, not a part of the problem.

Get involved. Join the WHOA. Attend the monthly WHOA meetings. Join the WHOA Board. Volunteer to help with one of the events or tasks.





Free Bulk Pick-Up

Are you planning on early Spring cleaning or redoing a room and want to get rid of some large items in your house? Items like mattresses, box springs, sofas, coffee-tables, chairs, cabinets, dishwashers, Christmas trees, tires, wheels, or bags of

clothes that do not fit in your refuse container can be taken away using the bulk pick up service. Waste Management allows you to have two bulk pickups a year. Picks ups are limited to three cubic feet each time. To make arrangements, visit:

www.wm.com and choose residential, bulk trash pick to make online arrangements. On the night before your arranged pick up date, arrange your 3 cubic feet of items on the sidewalk next to your trash.



**TSURU
SUSHI**

**JAPANESE
RESTAURANT**
Sushi Bar & Grill

IN DOWNTOWN SAN LEANDRO SINCE 1997
1427 EAST 14TH ST. 510.352.3748
WWW.TSURUSUSHI.COM CATERING AVAILABLE

MANOR GRILL

**FAMILY
RESTAURANT**

BREAKFAST • LUNCH • DINNER



**526 Manor Boulevard
San Leandro, CA 94579**
P. 510.567.3684 • F. 510.969.7391

Tsuru Sushi Winter Coupon Special

This bento box is available all-day
Mondays through Thursdays only
3 Item Combination Bento Box
Chicken Teriyaki
Tempura & 3-piece California Roll
Miso Soup, Salad & Rice
Only \$15.95 per person with this coupon
Offer good through 12/30/24

Manor Library Introduces Two New Programs

Does your child need a little extra support with their homework? Join us at the, Manor Library for our **Homework Center** starting October 1st! We're here every Tuesday and Thursday from 3:30 to 5:00 pm to assist students in grades 1-5 with their homework needs. Whether it's math, reading, or just getting organized, our friendly staff and volunteers are ready to help. Bring your assignments and questions, and let's make homework a little easier together. Please contact Samira at shabibi@sanleandro.org for more information.

Lego Challenge: Join us on the second Mondays of each month from 3:30 to 4:45pm as we encourage kids to use their creativity, design, and engineering skills, and even teamwork, to complete monthly construction challenges to build freely in this fun STEM-based series using LEGO bricks. No registration required. Come join the fun.

COMMUNITY CALENDAR

Mistletole Madness Fair Marina Community Center	Nov 30 10:00-4:00
It's a Wonderful Night Downtown San Leandro	Dec. 6 4:30-9:30
WHOA Christmas Party Marina Community Center	Dec. 7 5:30-8:30
LEGO Challenge Marina Library	Dec. 9 3:30-4:45
Holiday Cookies with the Cops San Leandro Police Department	Dec. 10 5:30-8:30
Childrens Gift Giving Craft Event Manor Library	Dec. 11 4:00-5:00
Adults DIY Gift Giving Workshop Manor Library	Dec. 14 1:30-3:30
Martin Luther King Celebration Marina Community Center	Jan. 18 10:30
Lunar New Year Bazaar Oakland Chinatown	Jan.18-19 10:00-5:00
Lunar New Year Celebration Manor Library	Feb 9 2:30-4:00

Local Election Results

The WHOA would like to thank those of you who participated in our most recent election by casting your ballots in person, sending it in the mail, or dropping the ballot off at the Manor Library ballot drop off box. Your vote

helped elect the following local officials.

Newly Elected San Leandro City Council Members:

Dist. 1 Sbeydeh Viveros-Walton
Dist. 2 Bryan Azevedo
Dist. 4: Fred Simon
Dist. 6 Dylan Boldt

Other Elected Officials In Office:

Mayor Juan Gonzalez
Dist. 3 Victor Aguilar
Dist. 5 Xouhoa Bowen

WHOA congratulates the winners and looks forward to

working with the City Manager, and her staff, the Mayor, and the entire City Council to make Washington Manor a safer, more vibrant, and a better place to live.

Help Rebuild the Historic Manor Sign

The Manor Shopping Center sign on the corner of Manor Boulevard and Farnsworth was built in 1954 as a gateway to the unincorporated Washington Manor district. It illuminated the area called the "Four Corners" and added character to the neighborhood. Unfortunately, the sign toppled over in December 2020 during a storm.

Engineers have determined that a new foundation would need to be constructed with steel pillars going down six feet deep. The porcelain light box would be replaced with eco-friendly material and the neon lights would be completely replaced. The cost to replace the sign is \$140,000.

The San Leandro Optimist Club is leading a campaign to secure enough funds to replace the sign. A gofundme site has been established, but they need your help.

Did you know that the Day in the Park was made possible by a huge donation from the San Leandro Optimist Club. They made it possible for us to purchase the hot dogs, hamburgers, and chips for over 1,000 people. Let's show the San Leandro Optimist Club how much we appreciate their support in making it possible for WHOA to bring back the Day in the Park.

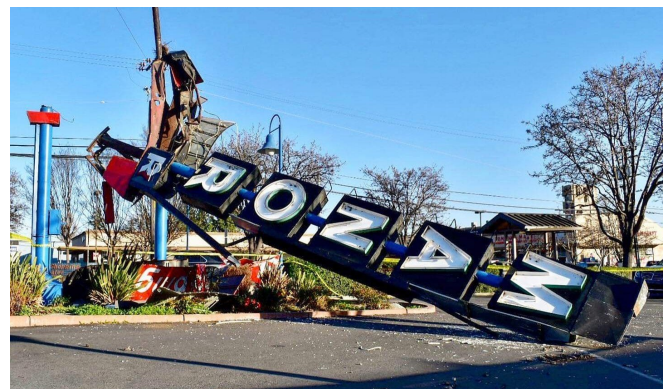
You can do that by going online and making a contribution towards their pet project, "Rebuild the Manor Sign", and at the same time, help restore part of the Washington Manor history. Please visit:



<https://gofund.me/a894fdb2> to make your donation. Take pride in your community. Donate now.



The Historic Manor Sign



Our Historic Sign After the December 2020 Storm

Cooking Corner

BBQ Pork (Cha Siu)

4 lbs. boneless pork butt (1-1/2" wide strip)
1 cup packed brown sugar
1-1/2 tsp five spice powder
3 tbsp rice wine
1-1/2 tsp red food coloring
1 tbsp sea salt
1/2 c honey
1/4 c hoisin sauce

Rub the pork strips with sea salt.

Mix the remaining ingredients. Reserve 1/3 of the marinade in a bowl for basting the following day.

Put the pork strips in a gallon size zip lock bag and pour the remaining marinade into the bag. Close the bag and gently rub the meat to ensure that all pieces are coated with the marinade. Refrigerate overnight.

Preheat oven to 350. Put a rack in the roasting pan that is at least 2" tall and fill the pan with 1/4" water (make sure the meat does not touch the water).

Place the meat on the rack and roast for 20 minutes. Flip the meat, baste with the reserve marinade and roast for 20 minutes. Flip the meat once more, baste and roast for another 20 minutes.

Remove the meat from the oven, cool on a wire rack before slicing.



The Washington Manor Resilience Hub is a city-sponsored program through the Sustainability Department with focus on climate action and emergency preparedness. The Manor Resil-

ience hub meets bi-monthly to share concerns and plan events, such as emergency preparedness starter kit giveaways, discussion on edible medicinal native plants, and clothing exchanges. We collaborate with city departments to build the community and strengthen our neighbor support network. If you have a question or want to help us plan the next event, please email us at: wmresiliencehub@gmail.com.

Homework Center at the Manor Library

Tuesdays & Thursdays, 3:30-5PM

Need help with your homework afterschool?

Register at: bit.ly/4fD096R

Prevent Identity Theft

With the holidays coming up, people tend to have more transactions due to increased travel, shopping and attending events. That means there's more opportunity for identity thefts. However, you can initiate some preventative measures to safeguard your personal information.

WHAT TO DO TO PREVENT IDENTITY THEFT?

1. Regularly monitor your credit report, credit scores, and financial accounts. You can get free credit reports at www.creditkarma.com.
2. Protect your online devices by setting up a strong password and use a two-factor

authentication to make it harder for others to access your accounts.

3. You can set up a credit freeze or fraud alert so that thieves can't open up new accounts under your name by contacting the top three credit reporting firms, Equifax, Trans Union, and Experian.

4. Invest in a shredder and shred all your documents, choose e-statements, or go online for your statements.

HOW CAN YOU TELL IF YOU'RE A VICTIM?

1. You start receiving bills that unauthorized charges or get collection calls for ac-

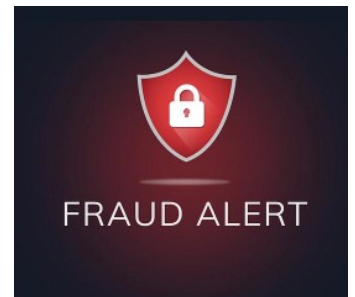
counts you never opened.

2. Your credit score drops or you're denied for a loan.

3. There are unauthorized withdrawals from your accounts.

WHAT IF YOU ARE A VICTIM OF IDENTITY THEFT?

1. Contact your financial institution.
2. Set up a fraud alert or a credit freeze.
3. Contacting ChexSystems to ask about inquiries and request an ID theft alert for your file.
4. Request a credit report for you to review.
5. Contact San Leandro Police to report the fraud.



2D:4D Finger Ratio

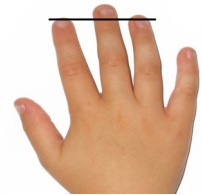
The length of your fingers, particularly the ratio between your index and ring fingers, can reveal fascinating insights about your personality and health. This ratio, known as the 2D:4D ratio, is influenced by the levels of testosterone you were exposed to in the womb. Here's what it could mean:

Leadership and Confidence: If your index finger is longer than your ring finger, you may possess natural leadership qualities, confidence, and a take-charge attitude. You're likely to be proactive and prefer working independently.

Charm and Communication: A longer ring finger com-

pared to the index finger suggests a charming personality, good problem-solving skills, and effective communication. You might find yourself able to talk your way in and out of various situations.

Athletic Prowess and Spatial Skills: A shorter index finger relative to the ring finger has



been linked to better athletic abilities and superior spatial cognition.

HOLIDAY PARTY

Celebrate the Season. Join Us for the 2nd Annual Holiday Party!

The holiday season is upon us, and what better way to celebrate than by gathering with friends and neighbors at our 2nd Annual Holiday Party. Hosted by the Washington Manor Homeowners Association, this year's event will take place on **December 7, 2024**, at the Marina Community Center, and everyone in the community is warmly invited!

Connect with Your Community.

This year's holiday party promises to be an incredible opportunity to meet your neighbors and engage with local leaders. Join us as we welcome city council members and our mayor, who will

share updates on San Leandro's goals and initiatives for 2025. This is your chance to voice your thoughts and ask questions about the future of our city!

Festive Fun for All Ages.

The doors will open at 6:30 PM, featuring a variety of festive stations designed to bring joy to attendees of all ages. Sip on delicious hot chocolate as you mingle with friends, and let the kids enjoy the special activities planned just for them. Don't forget to stop by our photo booth to capture fun memories with family and friends—these snapshots will be perfect for your holiday cards!

Delicious Pot Luck Dinner

At 7 PM, the potluck dinner will

start, so please bring your favorite dish to share with the group and arrive early. There's nothing like a potluck to bring out the flavors of our community, and we can't wait to sample the culinary delights you all have to offer. Whether it's a cherished family recipe or a festive treat, your contributions will make our dinner even more special.

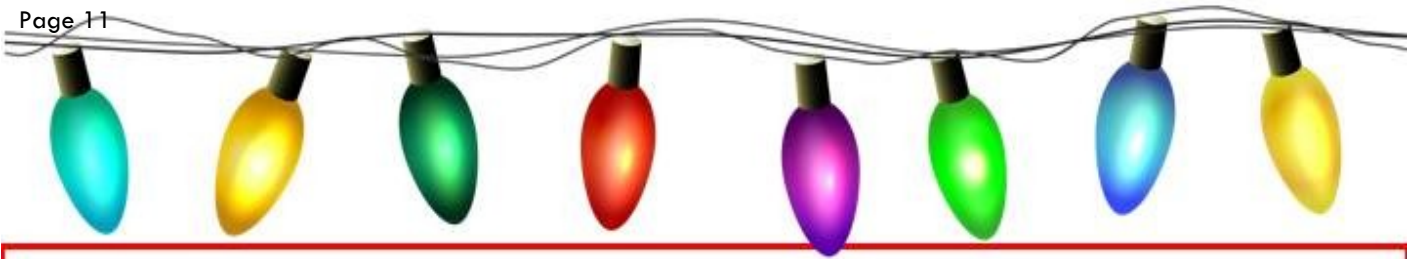
Dance the Night Away

After dinner, get ready to hit the dance floor! DJ Emit G will take stage at 9 PM to keep the energy high and the music pumping. Whether you love to dance or just enjoy the festive atmosphere, the evening promises to be filled with laughter, joy, and holiday spirit..

Raffle Prizes and Toys for Tots

In addition to all the fun and festivities, we'll be hosting a raffle with exciting prizes up for grabs! To enter, simply bring a toy for our Toys for Tots drive. This is a wonderful way to give back to our community during the holiday season, and your generous donations will help bring joy to children in need.

We can't wait. The December 7th event at the Marina Community Center will be a community celebration to connect and generate goodwill. Bring your family and friends to meet new friends. Let's create lasting memories and embrace the spirit of the holidays.



HOLIDAY PARTY

Washington Manor



Saturday, December 7, 2024
7:00 pm – 10:00 pm
(Doors open at 6:30 pm)

Free Event
Bring a Dish!!!



Marina Community Center
15301 Wicks Blvd, San Leandro
Titan Auditorium



Community Updates:
Mayor Juan Gonzalez
and City Council

Dj Emet G

FREE FESTIVITIES INCLUDE

- ❖ *Potluck Dinner*
- ❖ *DJ and Dancing*
- ❖ *Free Raffle with Prizes*
- ❖ *Toys for Tots Toy Drive (bring a toy and receive a raffle ticket)*
- ❖ *Family Friendly Games*
- ❖ *Photo Booth Backdrop*
- ❖ *Hot Cocoa Station*
- ❖ *Kids Zone*



DANCE



DRINK



EAT



RAFFLE



Hosted by Washington Manor Residents

Co-Sponsors: Washington Manor Homeowners Association and San Leandro Optimist Club

TextHost for More Info: 650-743-2483



Your local family Real Estate Company



Thinking of Buying or Selling?

Call Paul
510-351-2200

Paul Litvinchuk
Cell: 510-750-8380
Office: 510-351-2200
PaulLitvinchuk@Gmail.com
DRE# 00574652



1191 Manor Blvd.
San Leandro, CA 94579

If your property is currently listed with a Realtor, please disregard this offer. It is not our intention to solicit the offerings of other Realtors.

Real Estate Services:

- **FREE** Estimates of Value on Any Real Estate
- **Seller Representation**
Single Family (Detached), Townhomes, Condominiums, Duplex, Multifamily Units, Rental Properties, Mobile Homes, Commercial-Retail, REO
- **Trust and Probate Sales**
Questions? We can help you navigate through the process step by step from start to finish
- **1031 Tax Deferred Exchanges**
Assistance with the sale of existing property and locating a replacement property, coordinating with 1031 accommodations to complete a successful 1031 exchange
- **Buyer Representation**
First time Buyers, Pre-qualifications with certified lender, Downsizing, Trading up, Relocating, Out of state Service
- **Notary Service**
- **Professional and Experienced Staff to Serve Your Real Estate Needs**

Serving the Entire Bay Area and Northern California

Courtesy Value Certificate



Valuable Certificate

FREE Estimate of Value
On Any Real Estate
No cost or obligation

Paul Litvinchuk
Call Anytime 510-351-2200



DRE#00575462