

SkyWind Solutions

Hyperlocal Weather Intelligence for Maritime Operations

Bonnie Schneider, Co-Founder & CEO
bonnie@skywindsolutions.com
skywindsolutions.com • (516) 857-1905

THE PROBLEM

Maritime and coastal operators rely on accurate weather data around the clock. Today's forecasts are regional and coarse, missing local conditions at the specific sites that matter most.

OUR SOLUTION

- **Wind at 60 Meters (7-day hourly)** — Forecasts at cruise superstructure height, where drag impact is greatest. Supports heading, speed, and berth coordination up to 5 days out.
- **Hyperlocal Tide (7-day hourly)** — 90% confidence intervals with hourly precision. Fills 50–100 mile monitoring gaps critical for port entry, departure, and coastal resilience.
- **Hyperlocal Fog (24-hour hourly)** — Alerts at client-defined visibility thresholds. Supports tender scheduling, vessel approach, and crew safety.

Output includes predicted values with 90% probability bands.

PROVEN IN THE FIELD

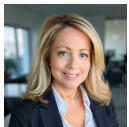
"The tangible operational improvements, combined with the software's reliability and ease of use, have exceeded our initial expectations."

— **Derek Smith, PhD, CEM®** | Community Redevelopment Manager, City of Port Richey, FL ✓

"I consider the SkyWind Solutions hyperlocal dashboard a successful pilot that provides clear value for Cape Canaveral's coastal planning and resilience efforts."

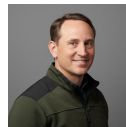
— **Zachary Eichholz, Chief Resilience Manager** | City of Cape Canaveral, FL ✓

THE TEAM



Bonnie Schneider
CEO & Co-Founder

Former national TV meteorologist (NBC, CNN, Bloomberg, The Weather Channel). Author of *Extreme Weather* (Macmillan) and *Taking the Heat* (Simon & Schuster).



Daniel Hodyss, PhD
CTO & Co-Founder

Expert in environmental prediction integrating numerical weather models and generative AI. Specializes in Monte Carlo methods and geophysical fluid dynamics.

Business Model

Annual SaaS subscription. Data delivered through API or files. Seamlessly integrates with existing systems without disrupting workflows.

Ready to See It in Action?

Start with a 2-month site-specific pilot, no commitment required. We build a custom forecast tuned to your exact coordinates and thresholds.

THE 60-METER WIND GAP

Standard forecasts measure wind at 10 meters. Cruise ships experience wind drag at 60 meters, where forces are dramatically higher. SkyWind bridges that gap.

THE 10M → 60M WIND GAP (Bahamas Corridor, Jan 2026)

STANDARD (10m)

15 kts

SKYWIND (60m)

18.6 kts

That's +24% more velocity and +53% more aerodynamic drag, accounting for roughly 4% of total fuel cost.

2.3 kts

forecast error at 24h

3.2 kts

forecast error at 72h

< 5 kts

forecast error at 120h

Validated accuracy across every planning horizon, from next-day schedule adjustments to five-day itinerary coordination.

SUSTAINABILITY IMPACT

Forecasting wind at true vessel height enables earlier routing and speed adjustments that measurably reduce fuel consumption and improve annual CII ratings.

3–5%

fuel variance reduction per transit

\$3,000–\$6,000 per vessel per day at current fuel prices

Supports CII compliance under IMO MEPC.338(76)

Bonnie Schneider, CEO

bonnie@skywindsolutions.com
skywindsolutions.com
(516) 857-1905