



# Kite

MECCANISMO DI APERTURA SCORREVOLE  
SOVRAPPOSTO CON AMMORTIZZATORE MAGNETICO

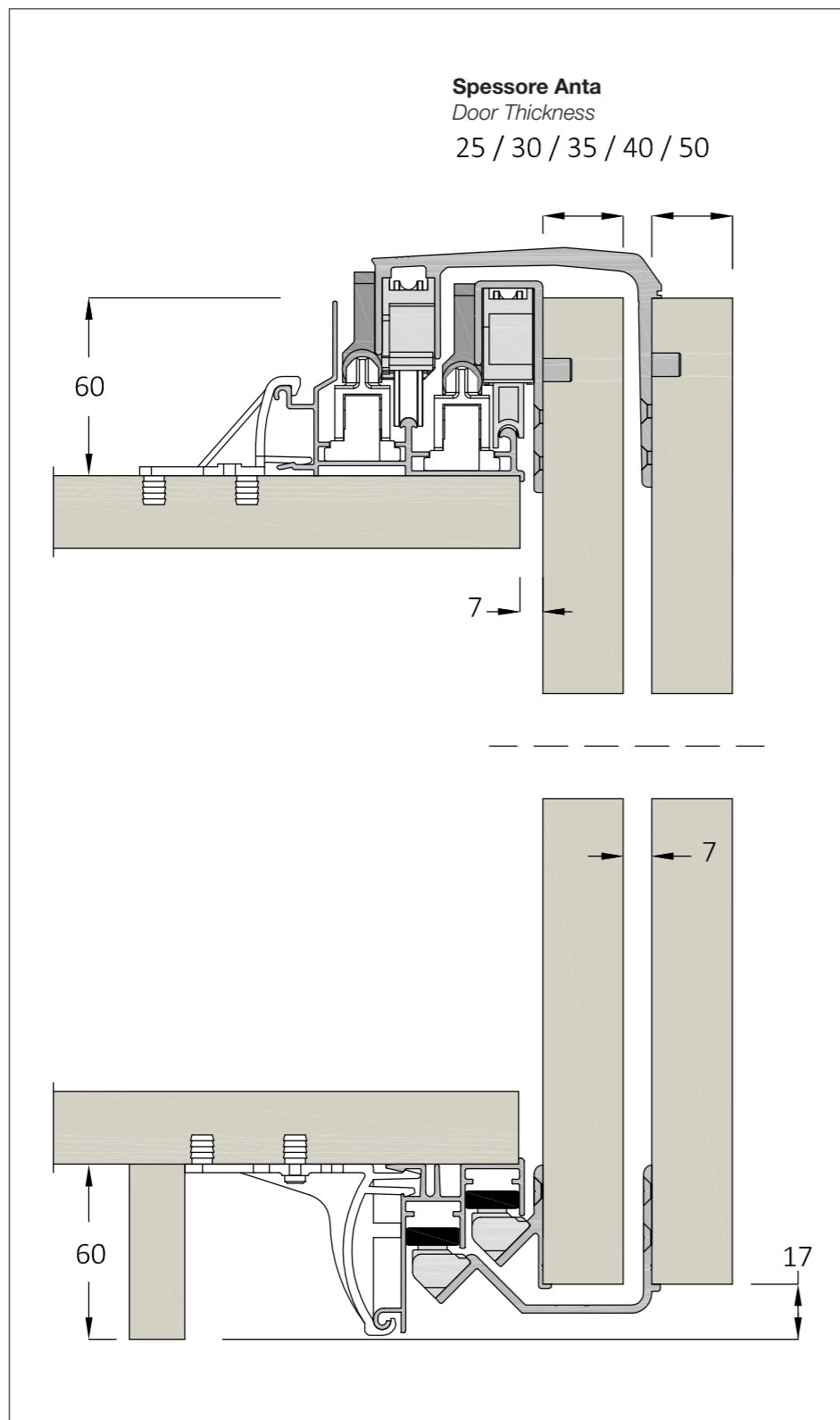
*OVERLAPPING SLIDING SYSTEM  
EQUIPPED WITH MAGNETIC SOFT-CLOSING*

MIXAL 

# Kite/Aliante

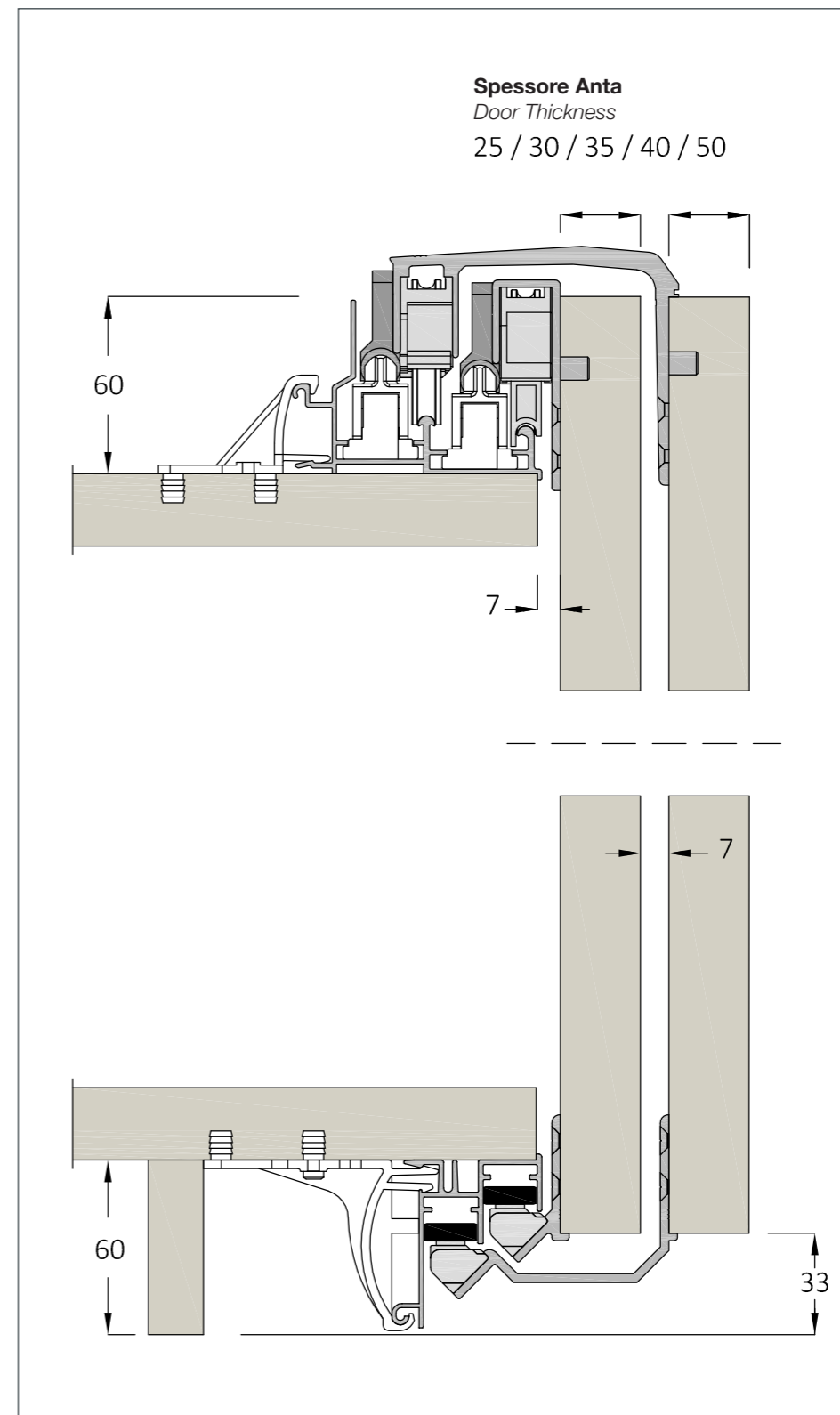


# Kite h17



Patented pending

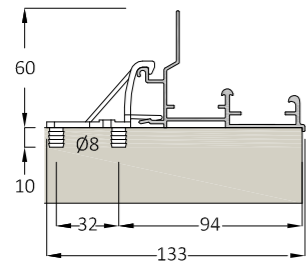
# Kite h33



Patented pending

# Kite

(\*) I Binari possono essere forniti su misura cliente / I Binari possono essere forniti su misura cliente



**P9014\***

**BINARIO SUPERIORE**

Finitura Grezza

**UPPER RAIL**

Raw Finishing

- L. 2000 mm - P9014GR2000
- L. 3000 mm - P9014GR3000
- L. 4000 mm - P9014GR4000
- L. 6000 mm - P9014GR6000

Clip E30125

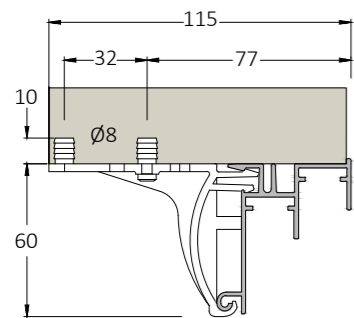
**BINARIO SUPERIORE**

Finitura Anodizzato Naturale

**UPPER RAIL**

Natural Anodized Finishing

- L. 2000 mm - P9014AN2000
- L. 3000 mm - P9014AN3000
- L. 4000 mm - P9014AN4000
- L. 6000 mm - P9014AN6000



**P9053\***

**BINARIO SUPERIORE rinforzato**

Finitura Grezza

**Reinforced UPPER RAIL**

Raw Finishing

- L. 2000 mm - P9053GR2000
- L. 3000 mm - P9053GR3000
- L. 4000 mm - P9053GR4000
- L. 6000 mm - P9053GR6000

Clip E30126

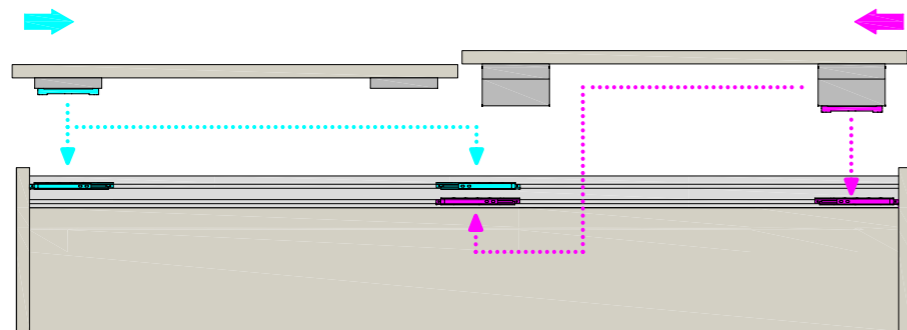
**BINARIO SUPERIORE rinforzato**

Finitura Anodizzato Naturale

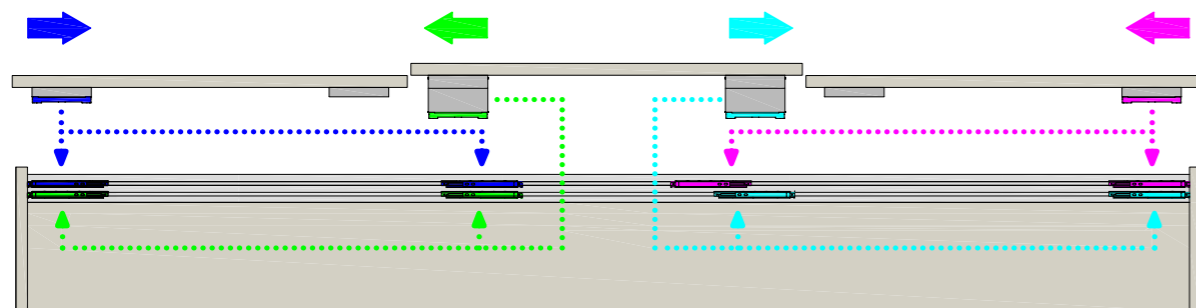
**Reinforced UPPER RAIL**

Natural Anodized Finishing

- L. 2000 mm - P9053AN2000
- L. 3000 mm - P9053AN3000
- L. 4000 mm - P9053AN4000
- L. 6000 mm - P9053AN6000



**Sistema due ante**  
Two doors system

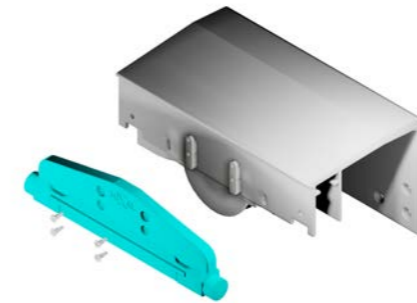


**Sistema tre ante**  
Three doors system

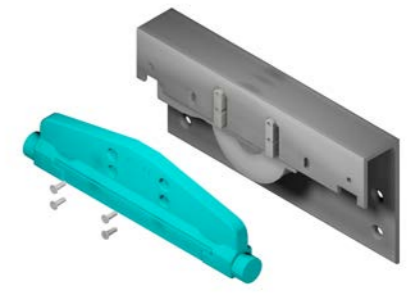
# Kite



**Ammortizzatore magnetico**  
Magnetic Soft Closing  
KSCAMMFXL100



**Versione Ammortizzata**  
Soft Closing Version



**Versione Ammortizzata**  
Soft Closing Version

