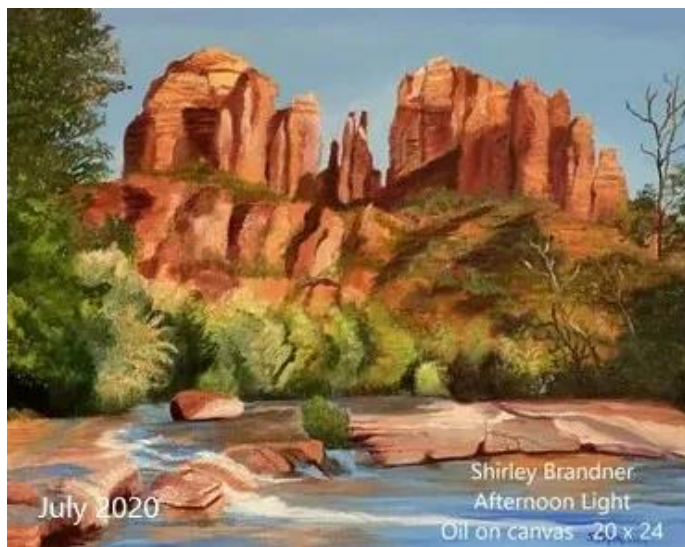


Artwork of the Month – July
Shirley Brandner – Afternoon Light



During the pandemic I wanted to paint some place happy and colorful. I decided on Sedona. What better place for beauty and hiking? I remember our good friend Sandy Meissner because she had her beautiful horse painted in Sedona. I have been painting for 40 years and began as a self-taught artist. I have taken classes with Jane Bradley and learned portrait painting, which I love. Thanks to all of you for voting for me! (See page

Upcoming Shows!

Vets at Holland in November 2020

Holland for MAL February 2021

September 2020



A WORD FROM THE PRESIDENT

Greetings fellow artists. I hope all of you are safe and well.

The state is still semi shut down so our meeting again will be on Zoom. I hope you read Vivian's article on using zoom. We're very lucky to have the support of Concerned Veterans of AZ for our digital meetings. We really appreciated all your input last month.

We have joined the Artist Sunday national organization, promoting buying local art on the Sunday after thanksgiving. We will be working with the local businesses to promote this. More information to come shortly.

Hope to see you on the 8th of September. If you would like to join us send a note to mesaartonline@gmail.com. Don't forget to bring a piece of art you are working on to show us.

Keep on Creating

Loralee

In this issue:

- A Word from the President - pg. 1
- Shirley Brandner, Art Winner for July – pgs. 1 & 7
- Member Scholarship pg. 2
- Upcoming Shows – pg. 2
- Member Spotlight – pgs. 3 - 4
- August Artwork of the Month pgs. 5-6
- Vote for Artwork & Submit for Sept.– pg.6
- Vet Classes for Aug/Sept - pg. 7
- Members Blog, Websites – pg. 8
- Member's Online Shop! – pg. 8
- Our Partners in Art – pg. 9

MESA ART LEAGUE EVENTS, ACTIVITIES, VETERAN CLASSES AND DISPLAY SCHEDULES ARE ONLINE DUE TO THE COVID 19 VIRUS

BOARD MEMBERS

President

Loralee Stickel-Harris

Vice President

James Corrigan

Treasurer

Linda Jones

Secretary

Brenda Jackson

Email any officer or venue director at malsesainfo@gmail.com & include their name in the subject line.

DIRECTORS

Hospitality

Kathleen Cochran

Artwork of the Month

Elizabeth Scriba

Demo Programs ??

NEEDED!

Membership

Sharon Corrigan

Newsletter

Pat Book

Publicity

NEEDED!

Historian

Suzanne Leslie

Art Shows NEEDED!!

Arizona Art Alliance Rep

Sheryl Stradling

Members Scholarship

Linda Allen

Festival of the Arts

John Brewer

Ad Representative

Diane Lenay Black

MEMBERSHIP SCHOLARSHIP - Scholarships are available to MAL members for attending a special workshop or class. You can apply for up to a \$250 scholarship to help with the tuitions. Due dates to apply for 2020 are: Feb 29, May 31, Aug 31, Nov 30. See application at: www.mesaartleague.com/_pdf/Membership/MAL-Membership-Scholarship-Contest.pdf

Mariposa Point Assisted Living of Mesa

John Brewer, 602-574-7576 Director

Canyon Winds

Vivian Stearns-Kohler, Director

Mesa Senior Center

Wilma Dilley, Director

Adalante Healthcare

Elizabeth Scriba

Wilma Dilley in June & July



Upcoming Shows!

Vets at Holland in November 2020

Holland -- February 2021

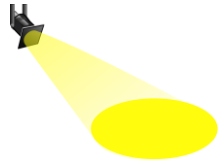
VOLUNTEER TO HELP MAKE THIS ONE OF OUR BEST SHOWS

If you are interested in helping out, send Loralee a note.

We will also have a special Veteran Art exhibit in hallway that month.

Join us on Zoom for the Monthly Meeting on September 8th– Send a note to mesaartonline@gmail.com with September Zoom Meeting in the heading of your email – You will be asked to download Zoom and given a password to enter.

The meeting will begin at 6 pm.



Spotlight of the Month on Mike Grill.

Michael is a former Staff Sergeant in the United States Air Force. Michael served from 1969 - 1975 seeing one tour of duty in Viet Nam from 1971-1972. From 1970-1975 Michael served as a Crew Chief and Flight Mechanic. From 1974-1980 Michael continued to serve in the Active Reserves and from 1975-1980 as a Race Relations Instructor, EEO Investigator and as a Substance Abuse Counselor. Michael has 100% disability by the VA. Thank you, Michael for your Service to our Nation.



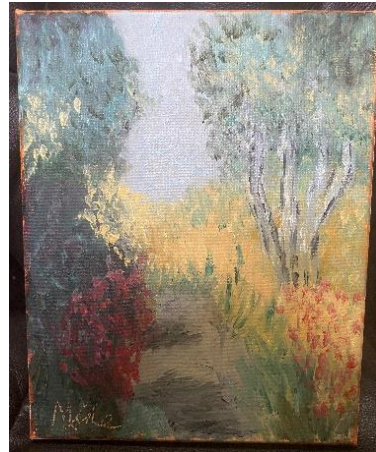
Mike Grill



Midnight in Moscow



Falling Leaves



Acrylic Paintings



My First Sale!

Michael's Educational background includes: a BS in Business Management; M.Ed. in Adult Education; MA in Human Resources Development; and a Graduate Certificate in Police Administration. Now in retirement, Michael continues to serve his community. " I'm Volunteering with Soldier's Best Friend who rescued a dog for me, Maverick, and provided PTSD service dog training for us free of charge."

Spotlight of the Month, Mike Grill Continued



Custom Jewelry



Happy Hanukah

As busy as Michael is, he still finds time for art and creativity. His artistic preferences are:

- Acrylic painting
- Ceramic hand building
- iPhone photography
- Tattoo design

Busy as a Bee



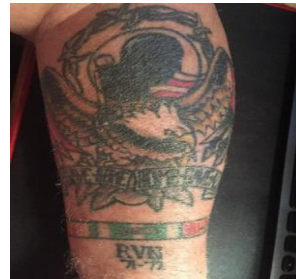
Game Time at Chase Field



Raku



Ghost Rider



Homage to Vietnam



Grumpy Big Papi

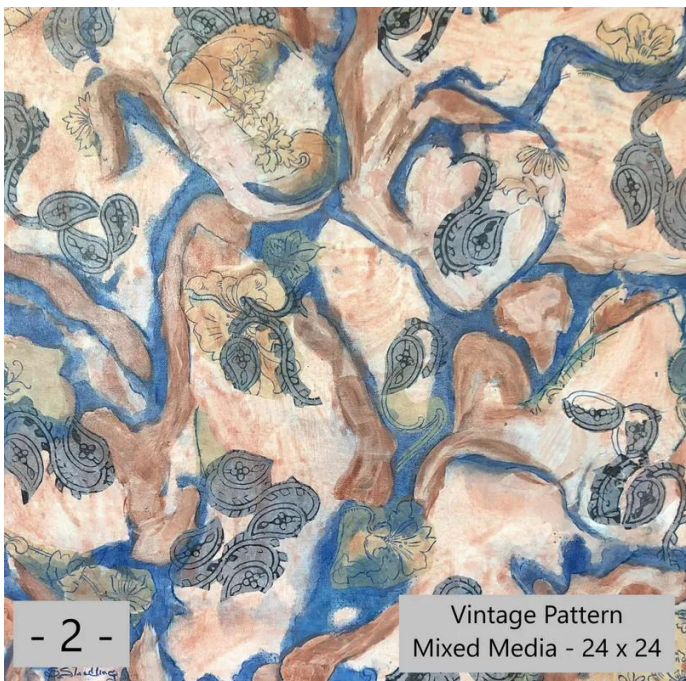
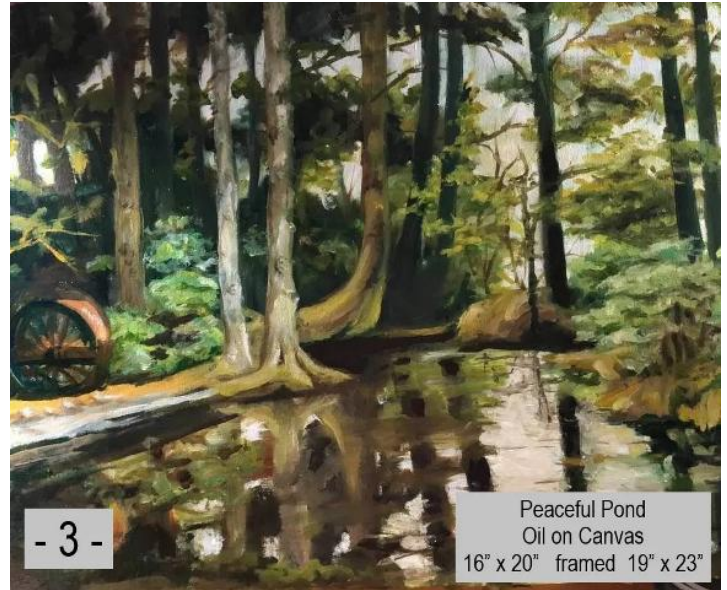
Michael has a 25 years Law Enforcement career, serving in the following capacities:

- Anchorage Police Dept, AK
 - Patrol Officer
- Tanana Police Dept, AK
 - Chief of Police
- Concord Police Dept, MA
 - Patrol Officer
- Somerville Housing Authority Police Dept, MA
 - Street Level Narcotics Enforcement
- Boxborough Police Dept, MA
 - Patrol Officer
 - Criminal Investigator
- Chelsea Housing Authority Police Dept, MA
 - Chief of Police

Pass the Cream



August Artwork of the Month



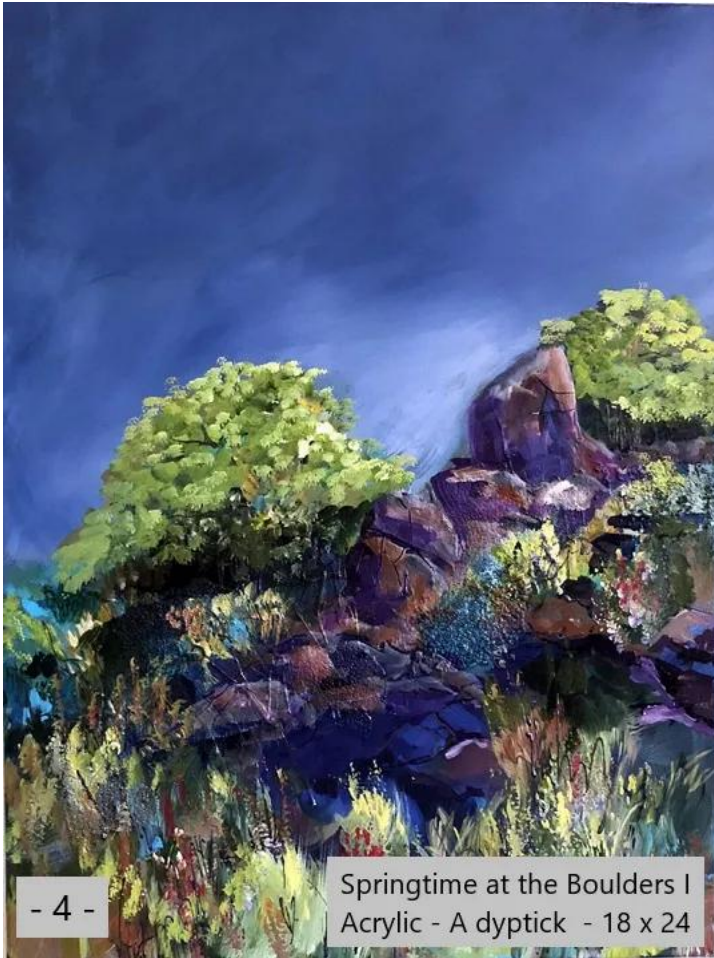
You will be sending your vote to MesaArtExec@gmail.com,

Please put in the subject line:

For Website Art Challenge;

Include the number of the art piece in the body of the email when you vote and please vote for only one piece.

See Next Page for #4



Artwork of the Month online!

The pieces that are now on the website are the ones for the month of August...

Voting will start on September 1st. Please send your vote to

MesaArtOnline@gmail.com,

Votes will be counted after September 7th

at 12 pm & results revealed

September 8th at the monthly meeting!



September Artwork of the Month

Submit your piece for September Artwork from September 8th, after our meeting, until September 30th at 6 PM



VET CLASSES!

September 8 – Copper
Loralee Stickel-Harris



Shirley Brandner Artwork of Month for August

September 22nd – Paper Mache
Lawrence Moody



Please check out the website and Facebook for the details.

If you are interested in participating, send a note to mesaartonline@gmail.com with Veteran's class in the subject line.

**All Members are welcome to attend
Veteran's Classes**

Member's Online Blog!



While each of us have joined the Mesa Art League for different reasons, one of the many reasons is to network, share experiences and learn from each other. Therefore, initiated at this unique time of Covid-19 that keeps members from gathering together in our customary way, we created a Website Blog, amongst other things.

Each week we post a new question for our members to address. We encourage members to share thoughts, tips, techniques and even ask questions of your own. We hope to slowly make this a learning tool by taking different media and inviting members that specialize in that medium to give tips, brief instruction and even answer questions?

Check us out on our Blog Page of Mesaartleague.com or on our Facebook Group Mesa Art League AZ. You could also send responses and questions to: sc.malmembership@gmail.com and we will post for you. Hope to hear from you soon.

Come Blog with Us!!

Zoom Information is in the August Newsletter Online – Please be sure to join us this month! If you have problems – Contact us at Mesaartonline@gmail.com with ZOOM in the subject line!

Dear Members,

We have opened our own **Gift Shop...**
Check online under **SHOP...**

You set your own prices, decide whether to include shipping or price into your item and handle your own sales and taxes!

Send your pictures and submission form to MesaArtOnline@gmail.com to add your sale pieces.

Contact Linda Jones @ MesaArtOnline@gmail.com for further information.

AAA News - Go to the AAA website

for the latest news. <https://azartalliance.com>

Other websites:

<http://www.artresourcecenter.org/>

<http://www.brushandpen.com/>

<https://www.mesaartscenter.com/classes>

<https://smile.amazon.com/ch/86-6056160>





P.O. Box 7733

Mesa, AZ 85216-7733

CREATING TOMORROW, TODAY! SUPPORT OUR PARTNERS

These Partners Donate gift cards, giclee prints, gift baskets and much more! When you buy from them, Say Thank You!

Jerry's Artarama - <http://www.jerrysartarama.com>

Blick's - <http://www.dickblick.com>

Joseph Conradi Family proudly supports the Mesa Art League Veteran's program and the League's participation in Artist Emporium.

Giclée: Art Print Editions – <http://www.artprinteditions.com>

Wuertz Gourd Farm - www.wuertzfarm.com

Wuertz Gourd Farm
2487 E. Hwy 287, Casa Grande, AZ 85194
520-723-4432 * www.wuertzfarm.com
email: wuertzfarm@wuertzfarm.com

Open Tues-Sat
8am-5pm
Closed Sun & Mon

Newsletter Advertisers Gain exposure with a paid monthly ad in Brushstrokes while helping to support local art!

Blick & Utrecht, together bringing you the largest selection of quality art materials.

VISIT US IN:
TEMPE
930 E. UNIVERSITY DR.
480-446-0800

THE BARNSWALLOW STUDIO & FRAME SHOP

PROVIDING SUPPORT SERVICES TO ARTISTS

CUSTOM FRAMING • DIGITAL SERVICES
PHOTOGRAPH ARTWORK
NEGATIVE SCANNING • COMPUTER SERVICE
INVENTORY AND BOOKKEEPING SERVICES

Discount on framing to current MAL members
We help artists with all their finishing needs.

Hours by appointment only - CALL 480-987-3257
kcmpics@juno.com

Located east of Queen Creek. Pick-up and delivery available.

fine
Giclée
art prints

Over 30 years serving artists throughout the United States.

We do it right and our prices are reasonable!

Please call our Mesa studio for an appointment.
480 227 2891

Artprint editions
www.artprinteditions.com

Welcome to **amazon smile**

You shop. Amazon gives.

- Amazon donates 0.5% of the price of your eligible AmazonSmile purchases to the charitable organization of your choice.
- AmazonSmile is the same Amazon you know. Same products, same prices, same service.
- Support your charitable organization by starting your shopping at smile.amazon.com.

Your shopping will support **Mesa Art League Inc**

Start shopping

Select a different charity

JERRY'S ARTARAMA
Empowering Artists Since 1968

www.JerrysArtarama.com

<https://smile.amazon.com/ch/86-6056160>