



Brushstroke

ARTIST OF THE MONTH IS KAY NORDBERG



My journey into painting started in England in 2000-2002 with watercolors. Returning to the USA put all of this on hold until I moved to Dreamland Villa in 2010 and joined art classes.

I have painted in most mediums, but this new mixed media started several years ago after attending a collage class in Cave Creek. I saw an artist abstract impression of the desert and was immediately inspired to create something using rice paper and ink work.

MESA ART LEAGUE UPCOMING SHOWS SCOTTSDALE ARTIST SCHOOL SHOW- September 6 – 23

Be sure to bring your paintings on September 6th between 11am and 12:30pm. Pick up date is on September 23 between 11am and 2pm.

The Newsletter of the Mesa Art League SEPTEMBER, 2022

WORD FROM THE PRESIDENT

Happy fall. The weather is changing and so are we. Our league meetings will be on the 2nd Tuesday of each month at 5PM at Greenfield Glen Clubhouse, 1021 South Greenfield Road, Mesa, 85205.

September's Demo will be with Lu, an artist who makes baskets out of gourds and a new member. And yes, you may bring food. Let Lorelee know if you are interested.

Also there will be a show at the 101 Gallery in December, for more information, see page 2. Lots going on so keep on creating, SCOTTSDALE ARTIST SCHOOL SHOW

September 6 - 23, 2022 M-F - 8:30-5pm

Location: 3720 N. Marshall Way, Scottsdale

Please join us for artist reception - invite your friends and family

Thursday September 15, 5-7

(this is the Scottsdale main street art walk night)
Should be fun!

Lorelee

IN THIS ISSUE:

Artwork of the Month – pg. 1

Mesa Art League upcoming shows – pg. 1

Starving Artist Show - pg. 2

December Show at OneOhOne - pg. 2

Send Photos for website – pg. 2

Members News – pg. 2

Mesa Art Gallery at OneOhOne Gallery-pg.3

How to Display at the MAL Gallery in the OneOhOne Gallery- pg. 2

Arizona Art Alliance News -pg. 3

Call for Art – pg. 3

Venue Schedule = Pg. 4

Membership renewal – pg. 3

Veterans Outreach – pg. 5

MEETING LOCATION, DATE AND TIME

Meeting date & time: - NEXT MEETING Tuesday, September 13 – 5:00pm Location: Greenfield Glen Club House - 1021 South Greenfield Rd. Meeting discussion: to be determined Demo – Gourds by Lu Wald Beginning September we will return to our 2nd Tuesday of the month meeting schedule.

STARVING ARTISTS SALE

October 15th 8-4 at Greenfield Glen Clubhouse
1021 South Greenfield Road, Mesa 85206
Table and space behind for a grid or easels. \$25.
Contact: Lorelee for more information.

DECEMBER SHOW AT THE OneOhOne GALLERY

101 W. Main Street, downtown Mesa
Gallery hours Fridays and Saturdays, 10 -5
NO need to pre register. Just show up on December 1.
Fee: \$10. (to help pay for rent of gallery)
Bring check or cash on Drop Off date
3 Paintings or sculptures per member.
Max size for painting 28 x 22 (approximately)
Artist will provide **card wall labels** for each piece ,
approx. business card size with Name, title, size,
medium, price
Sales go thru MAL. MAL will take 20% Commission
on any sales.

Drop Off Thursday Dec 1, 10 -11:30 am

Pick Up Saturday December 31, 2-3 pm

Artist Reception Friday Dec 9, 5-8pm

(This is the lively 2nd Friday Out night with band on OneOhOne patio, vendors along Main St)
December is one of the most active months in downtown Mesa. All events happen across Street from OneOhOne. Events going on Fridays and Saturdays.

December exhibit will be judged, and ribbons will be awarded.

Our judge is Barbara Atkinson Reeves
Her experience includes Executive director
Superstition Mountain Museum, Owner the Carrob.

Tree gifts and antiques in downtown Mesa,
Sculpture and Jewelry art teacher for 30 years
including teaching at Mesa Arts Center and taught
metal casting and master wax carving in the Metals
Program at ASU.

SEND PHOTOS FOR WEBSITE YOUR PHOTOS NEEDED NOW.

Subject line: website photo. Include your name,
and website or email address if you wish to be
contacted about possible sale other inquiry. Size of
photo: 500 pixels on largest side. Send to Alicia at
aliciashort01@gmail.com

MEMBER NEWS

Be sure to contact Alicia to have your good
news included in this newsletter and on the
webpage.

IN THE MESA ART LEAGUE ART GALLERY THIS MONTH

The gallery is open on Friday and Saturday's from
10am – to 4pm.
At this time the following dates for the MAL Gallery
are reserved by:
September - reserved Name needed
October – Elaine Dube
November – Karen
December – Kay Nordberg
January – Alicia Short

HOW TO DISPLAY AT THE MESA ART LEAGUE'S GALLERY AT THE ONEOHONE GALLERY.

We'd love to exhibit your art in our League
Gallery space in Suite 9 at the OneOhOne Building.
101 W. Main in active downtown Mesa.
Fee of \$5 per artwork per month
Fee of \$50 to display your art on main the wall for a
month. Downtown Mesa is hoppin with many
activities planned beginning in September.
Contact Lorelee.

ARIZONA ART ALLIANCE NEWS

SHOWS TO SEE



Exhibition Dates: September 1-30, 2022

Location: Virtual

Unspoken : Survivor Stories is an exhibition of artwork made by artists who have been affected by suicide. This exhibition of their art celebrates the hope, growth and the strength of survivors. Mounting this exhibit is a way to promote a greater understanding of the survivor experience. **Unspoken : Survivor Stories** humanizes this highly stigmatized topic and we hope to raise local awareness about suicide and mental health and reach more people who may need resources for themselves or loved ones.

Sonoran Arts League:

Hot Art - Cool Show continues through October 5, 2022

WORKSHOPS/CLASSES BEING OFFERED

Ground Floor Artists Summer Art Classes

13343 W. Foxfire Drive Suite 3, Surprise
Classes are ongoing throughout the summer
contact: groundfloorartists.com

Arizona Watercolor Association (AWA)

is hosting two two-day workshops with Michael Holter: October 12-13 focusing on Faces and October 14-15 focusing on Places. Contact: AZwatercolor.com .

The Sonoran Art League has a full schedule of art classes, workshops and programs throughout the summer including Veterans Art Programs; Extra Special Art (Youth and Adult); Youth Art & Education; Adult Art Education Contact: sonoranartsleague.org.

Arizona Clay Association's members donate their time and creativity to make ceramic bowls for an Empty Bowls event to raise funds for Waste Not. The event is at Arizona Center in Phoenix on Friday, October 14, 2022. If you are interested in

participating in this event contact Empty Bowls Coordinator, Janet Wilson or 602-432-7796 or arizonaclay.org.

CALL FOR ART

ART INTERSECTION

This juried exhibition of small artworks presents a wide variety of art expressed in a size no more than twelve-inches in any dimension. Amazing, beautiful, and impactful small works of art presented in a dedicated exhibition from a more intimate viewpoint that begs for a closer look!

Our juror will select strong works of art in all media, including painting, drawing, sculpture, textile, photography, printmaking, metals, wood, digital media, and more, that are presented perfectly in this intimate twelve-inch small format.

Important Exhibit Dates

- September 21: Online submissions due midnight Arizona MST
- September 28: Email notification of artists selected for exhibition
- October 22: Deliver selected ready to install work
- November 5: Opening reception
- November 5 through December 30: Exhibition open

Visit us in Gilbert Heritage District
Wednesday to Saturday, 10am - 6pm
207 North Gilbert Road, Second Floor, Gilbert,
Arizona 85234
480.361.1118



Mayor's Arts Awards Nominations 2022

Ends on August 31, 2022

The following opportunity for the 2022 Mayor's Arts Awards is presented by Phoenix Center for the Arts in partnership with the City of Phoenix Mayor's Office, and supported by Artlink Inc.

The Mayor's Arts Awards serve to identify outstanding artists in three areas + one organization:

- Dr. Eugene Grigsby Visual Artist Award
- Youth Artist Award
- Jerry Lawson Memorial Performing Artist Award
- Lou and Evelyn Grubb Community Innovator Award

The event takes place October 13, 2022 from 6pm-8:30pm in Hance Park.

Winners will be chosen based on the criteria of innovation, impact, and integration. For more information please visit phoenixcenterforthearts.org/maa.



Artlink 22nd Annual Juried Exhibition

This is a call for existing work and is open to artists of all mediums including, but not limited to, oil, watercolor, acrylic, graphite, charcoal, pastels, photography, ceramics, printmaking, textile, mixed media, fashion, performance, video, and sculpture/three dimensional pieces. All selected artists will be eligible for awards. The works of selected performing artists will be scheduled on specific dates and times TBA.

The online submission deadline is September 7, 2022, by 5 p.m. Artists who have exhibited in the past are permitted to submit, but may not submit a piece included in any previous Artlink Juried Exhibition.

Visit artlinkphx.org to sign up for the Artlink newsletter or connect socially on [Facebook](#), [Twitter](#) and [Instagram](#). Questions? Email submissions@artlinkphx.org.

Newsletter Editor – Alicia Short:

mesaartonline@gmail.com attention Alicia or aliciamshort01@gmail.com

DEADLINE FOR SUBMISSIONS by 25th of the month.

MEMBERSHIP RENEWAL

MEMBERSHIP RENEWAL FORM IS ON THE LAST PAGE OF THE NEWSLETTER.

If you wish to pay online, you can go to the Membership Page to the website – mesaartleague.com

VENUE CHANGE OUT DATES:

MESA SENIOR CENTER

Location: 247 MacDonald St. Mesa
(Second Thursday of every month) September 8, October 13, November 10, December 8

ADALANTE HEALTH CENTER

Location: 1705 W Main St, Mesa AZ 85201

Current 2022 Schedule:

I still have openings for the following:

September-October (Change in at the end of August; Change out at the end of October.)

November-December-January (Change in at the end of October; change out at the end of January.)

2023 schedule:

February-March

April-May

June-July-August

September-October

November-December-January 2024

Text Elizabeth at [317-460-5903](tel:317-460-5903).

Availability is first come first serve.

MESA ART LEAGUE LEADERSHIP TEAM

President – Lorelee Stickel-Harris

Vice President – Diane Black

Treasurer/Membership – Nancy Briggs

Secretary – Brenda Jackson

DIRECTORS:

Historian – [Suzanne Leslie](#)

Publicity and Social Media – [Vivian Stearns-Kohler](#)

Artwork of the Month – [Elizabeth Scriba](#)

Member Scholarship – [Linda Allen](#)

Newsletter – [Alicia Short](#)

Website – [Karen Beasley](#)

Demos – **Need someone to do**

Art Shows – Susan Paige

Ad Rep – Diane Black

Veteran Liaison – J. Chris Brewer



Location of Classes

Aster Senior Center at Mesa Downtown

247 N MacDonald, Mesa, AZ 85201

Meets on the 1st Thursday of the Month



Disabled American Veterans

1119 E Main, Mesa, AZ 85203

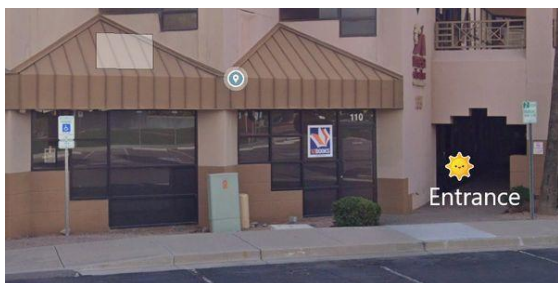
Meets on the 2nd and 4th Thursday of the month



Veterans Resource Center

165 N Centennial Way #101, Mesa, AZ 85201

Meets on the 3rd Thursday of the Month



VETERAN ART ACTIVITIES FOR SEPTEMBER

Thursday, September 1, 10 AM to 1 PM

Aster Senior Center

247 N. MacDonald, Mesa 85201

Project: Card Making with Pat Book,

Thursday, September 8, 10AM-1PM

Aster Senior Center

247 N. MacDonald, Mesa 85201

Project: Paint Pouring with Chris Brewer

Thursday October 15, 10AM-1PM

Veterans Resource Center

165 N. Centennial Way, Mesa 85201

Project: Painting on flat glass to create stained glass look with Lorelee Harris

Thursday, September 22, 10AM-1PM

Aster Senior Center

247 N. MacDonald, Mesa 85201

Project: Landscapes with Diane Black

Please join us

Mesa Art League Membership Application

Dues cover ONE calendar year, the MONTH YOU JOIN, to the FOLLOWING YEAR OF THAT MONTH. Renewal membership dues must be paid by the END OF THE MONTH in order to continue receiving Mesa Art League benefits.

First Name _____ Last Name _____

Phone : _____ Mobile Phone: _____

Email: _____

Address: _____

City _____ ST _____ Zip _____

year round resident? Winter resident?

A participating artist membership is open to all persons over 18 years of age and offers the opportunity to vote and hold an office. Participation also includes but is not limited to the displaying of ORIGINAL ART in all of the Mesa Art League art show and venues.

Renewal (\$35) New membership (\$35) Family membership (\$50)

We appreciate your volunteer time. Please choose the area you feel most comfortable assisting with, please check at least one:

Hospitality Publicity Demonstration Membership Social Media Exhibits Venues

Lead a workshop Other

Other Memberships and Supporters – A tax deductible Charitable Contribution for:

Friends of MAL - \$50 Sustaining - \$75 Patron - \$250 Corporate - \$750

Veterans Outreach Art Program - \$ _____ Other _____

The Mesa Art League is a 501c3 not for profit Art Organization providing art assistance to the ART and VETERAN community of Arizona.

To Pay online: by PayPal or Credit card you may go to MesaArtLeague.com under Membership page The membership form is under Forms

To pay by check: Make payable to Mesa Art League and mail to Mesa Art League, Membership – P.O. Box 7733, Mesa, AZ 85216-7733 Please include this form with payment.

DUES ARE TAX DEDUCTIBLE

For Office only:

Membership Paid Date: Month _____ Date _____ Year _____

Check number and Date: # _____ Date _____

Taken by (Please Print) _____