



JUNE IS FOR ARTISTS IN LOVE WITH ART!

Mesa Art League AZ
Karen Beasley · Just now ·

A good way to welcome summer is with an ice cream social - but when it is 100 degrees here in the desert, an ice cream substitute is a cupcake. We will still start off with our regular potluck before the business meeting but we encourage appetizers or salads. Our Cupcake Social will be a bit late in the evening. Tess will be there coordinating our 30- and 90-second marketing interviews and we will have a presentation of various forms of payment used these days.



CUPCAKE SOCIAL, TAKING PAYMENTS, AND CREATING VIDEOS

MAL members, join us at 5 p.m., Tuesday, June 9, at our new meeting location at the downtown Mesa Library. at 64 E 1st St.

Bring your art for Art of the Month. Bring art to be critiqued.

We will set up tables at 4:00 p.m. Bring snacks as usual, but no crockpots. Bring your own drinks. The meeting will be over at 7:30 p.m. See you Tuesday!

If you have any art for members' critique, bring it. Enjoy appetizers at 5 p.m.; business meeting starts at 5:30 p.m. Program at 6 p.m.

MAL officers, we want your headshots and 100-word bios for the new website and social media.



Do you know what all these symbols are for? They are the current form of payment for goods and services - what all the cool people use these days*. Cash and cheques are becoming passe. We need to know how to accept these new forms of payment both at the Next Phase and at the 101 Gallery for Studio 9 and for our big exhibits

*Sorry we have not included crypto currency.

NEW HOLIDAY ART OPPORTUNITY!

MAL at the Mall in Next Phase will have Christmas trees decorated with our member artists' ornaments for sale. To be discussed at our meeting.

ASTER SENIOR CENTER

The change out at the Aster Center was Thursday, May 7, 2026. These paintings will hang until Sept. 10, 2026. There won't be a change out over summer. Any questions?

Contact Joni Anderson, 602-284-7926, or email

WatercolorsByJoni@gmail.com..

Contact Joni Anderson at 602-284-7926 or at watercolorsbyjoni@gmail.com.



Joni Anderson



www.mesaartleague.co

Do you have a unique art technique that you would like to demonstrate to the membership at the monthly meeting? We will pay you \$50 for a 30-minute demo. Email Karen Beasley at karenbeasley@icloud.com.

We want your news! Have you won an award? Had successful art sales? Email Jacque Hillman: jacquehillman@gmail.com or jacque@jacquehillman.com

EXPANDING OPPORTUNITIES FOR MESA ART LEAGUE ARTISTS

Photos at Next Phase by Nancy Briggs

\$1,600 SALES AT NEXT PHASE, 675 VISITORS IN MAY. NEW SHOW, OPEN HOUSE, SAT. JUNE 13, ALL DAY.



Evelyn Snyder's paintings, above and right.



**LOCATION: NEXT PHASE
SECOND LEVEL,
SUPERSTITION MALL,
SOUTHERN AVENUE,
MESA.**

**DAYS AND HOURS:
MON.—TUES., 10 a.m. to
4 p.m.
WED.—FRI., 10 a.m. to 5
p.m.
SAT.—10 a.m. to 6 p.m.
SUN.—11 a.m. to 5 p.m.**



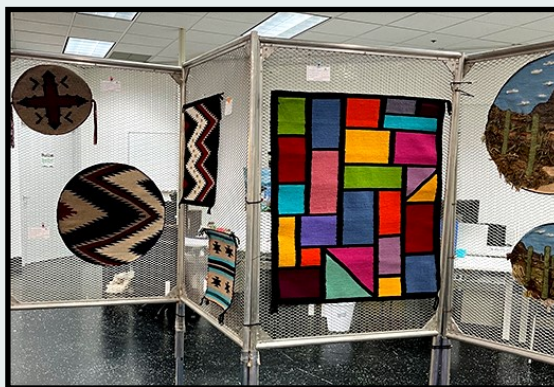
Coral Hoffman's jewelry.



Dana Chisholm's giclees and hats.



Kathy McClure shot these pictures of her photographs on exhibit. .



Sherie Moore's Navaho weavings and textiles.

SUMMER CLASSES :
Alicia Short —
Collage Art.
Jacque Hillman—
Jazz n Gems with
Jacque on Sunday
in August. Dates
TBA..

OUR ARTISTS' SUCCESS



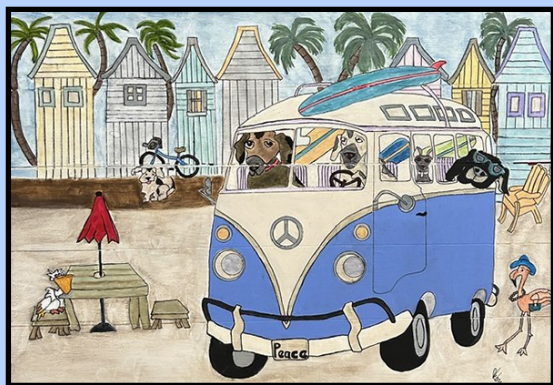
Artist of the Month for May is Anita Moser. We hope you will bring your art to share for Artist of the Month.



MORE INFORMATION IS COMING SOON ABOUT THE OCTOBER HOLIDAY ART SHOW AT THE ONEOHONE GALLERY IN DOWNTOWN MESA!

ASTER CENTER SALES!

Debra McKee sold this painting at the Aster Center



STUDIO 9 UPDATE

Sales report is upcoming for Studio 9 at the June 9 meeting. Alicia Short, Dana Chisholm and Joni Anderson are showing their art in June. Spaces are open for fall but are filling quickly.



Alicia Short's art is on the wall in Studio 9.

DATES TO REMEMBER

MAL at the MALL, New Show Open House in Next Phase: 10 a.m. to 7 p.m. Saturday, June 13.

MAL at the MALL, Holiday Open Studio in Next Phase 11 a.m. to 3 p.m., Saturday, Aug. 8 .

MAL at the MALL, Next Phase Holiday Open House: 10 a.m. to 7 p.m., Saturday, Sept. 5, potluck buffet.

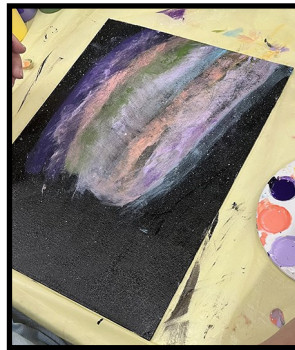
ONEOHONE GALLERY

The cARTel at OneOhOne. Curated by Meri Wiley. 480-247-7886. thecartel101.com
Contact Meri for information about the artists' maker space, classes, and current exhibitions in the gallery. Open Wednesdays-Sundays 1--4 for the winter. 101 West Main St., Mesa, AZ 85201

MAY, JUNE VETERANS CLASSES



Thank you to Chris Brewer who taught space painting, and to Nancy Briggs, who taught collages from Arizona Highways magazines!



CAN YOU TEACH A VETERANS ART CLASS?

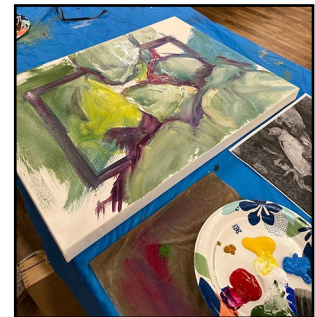
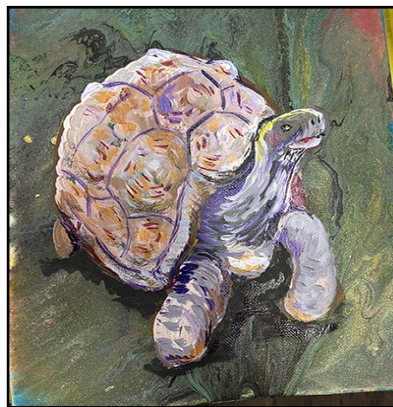


VETERANS ARTS AND OPPORTUNITIES



Veterans' art classes

Volunteers sought to teach art classes. Karen Beasley offered to teach a class. What about you?



Veterans Art Classes meet at the Aster Senior Center, **247 N Macdonald , Mesa, AZ 85201**

Meets on every Thursday of the Month 10 a.m. – 1 p.m.