

April 2020

A WORD FROM THE PRESIDENT



Greetings fellow isolated artists. I hope you are all well and safe. It has been a very unusual experience, but fruitful. I've organized my garage/studio and am ready to work. I've spent more time on Facebook, checking out what others are doing. I know when this is over, I to give everyone a big hug. I am grateful to all the board members and volunteers who continue to work for the league and those who have helped with ideas and getting the word out. I hope you will enter the challenges we have for April, one for members only and one on Facebook, open to everyone. I hope you've all had the opportunity to challenge yourself, and to try new things in the time of COVID19. Stay Safe, Stay Healthy and keep on creating.

Loralee

**In this issue:**

- A Word from the President - pg. 1
- Member Scholarship pg. 2
- April Artwork of Month Challenge – pg. 3
- Facebook Challenge – pg. 4
- Elaine Dube Bio–.pg 2
- Rosalee Vaccaro Article - pg 5
- AAA and other Websites – pg 5
- Upcoming Shows – pg. 4
- Facebook info and pics – pgs 6-8
- Website Pictures – pgs 9-12
- Our Partners in Art – pg. 13



March Artist of the Month

A Walk In The Rain by Elaine Dube

Upcoming Shows

Holland in October

**ENTER "THE CHALLENGE" FOR APRIL ARTIST  
OF THE MONTH!**

**MESA ART LEAGUE EVENTS, ACTIVITIES, VETERAN CLASSES AND DISPLAY  
SCHEDULES ARE ON HOLD UNTIL THE MONTH OF MAY DUE TO THE COVID 19 VIRUS**



## BOARD MEMBERS

**President**

Loralee Stickel-Harris

**Vice President**

James Corrigan

**Treasurer**

Linda Jones

**Secretary**

Brenda Jackson

Email any officer or venue director at [malmesainfo@gmail.com](mailto:malmesainfo@gmail.com) & include their name in the subject line.

### DIRECTORS

**Hospitality**

Kathleen Cochran

**Artwork of the Month**

Elizabeth Scriba

**Demo Programs ??****NEEDED!****Membership**

Sharon Corrigan

**Newsletter**

Pat Book

**Publicity****NEEDED!****Historian**

Suzanne Leslie

**Art Shows****Arizona Art Alliance Rep**

Sheryl Stradling

**Members Scholarship**

Linda Allen

**Festival of the Arts**

John Brewer

**Ad Representative**

Diane Lenay Black

**MEMBERSHIP SCHOLARSHIP** - Scholarships are available to MAL members for attending a special workshop or class. You can apply for up to a \$250 scholarship to help with the tuitions. Due dates to apply for 2020 are: Feb 29, May 31, Aug 31, Nov 30. See application at:

[www.mesaartleague.com/pdf/Membership/MAL-Membership-Scholarship-Contest.pdf](http://www.mesaartleague.com/pdf/Membership/MAL-Membership-Scholarship-Contest.pdf)

**Mariposa Point Assisted Living of Mesa**

John Brewer, 602-574-7576m Director

**Canyon Winds**

Vivian Stearns-Kohler, Director

**Mesa Senior Center**

Wilma Dilley, Director

**Adalante Healthcare**

Elizabeth Scriba

**ELAINE DUBE BIO:**

I have been painting many years, taught in Vancouver, Wa for the city and Clark College as well as in my home. I was also a ballet teacher so the arts are part of me, all my life. The art tent shows are what brought us here to Arizona, after doing many shows here we decided to move here and make Arizona our home. I have had many solo shows as well as winning many awards through the years. Now, teaching is my work, watercolor, drawing, colored pencil and watercolor pencil.

Thank you, everyone for choosing my painting, "A Walk in the Rain" for Artist of the Month. I have done many cityscapes living in Washington. After moving here, my colors changed from the blues to shades of gold, and I turned to painting the beautiful flowers and scenes of this area. No city scenes for over 15 years until this spring. It was a fun challenge. I have been exploring the granulating paints in watercolor and this was a fun piece to paint. Adding the granulating colors in layers on the walls of the buildings added much to the painting. Reflections of the wet street was another throwback to the wet climate up north. I love doing portraits and people also, so this was a fun painting for me. Again, thank you!

**Vet Classes On Hold until  
MAY 2020**

## Submit by April 30th

Hello to all who are enjoying the self imposed quarantine!

The Mesa Art League board is issuing a challenge to

those who want to participate.

### Artwork of the Month online!

We will post your artwork on the MAL Website!

You will have until April 30th to send your art to [MesaArtOnline@gmail.com](mailto:MesaArtOnline@gmail.com) and we will post within 24 hours.

Voting will begin on the next day May 1st until May 12th,

what would have been our meeting day!

You will be sending your vote to [MesaArtExec@gmail.com](mailto:MesaArtExec@gmail.com)

so it will be private, no one will know how you voted.

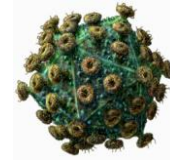
Submissions will be your choice, 2d or 3d, painting, oils, acrylics, watercolors, miniatures, sculpture, jewelry, pottery, porcelain, ceramics or welding.

Get the best photograph you can!

Size doesn't matter but quality does!

Crop your photo so it doesn't include background!

**Winner will receive a free membership to the Mesa Art League.**



We look forward to seeing your COVID 19 Creativity.

**For those who do not have access to the internet,** send a photo directly to Pat Book, 6234 E. Presidio St, Mesa, AZ 85215. I will scan your photo in and send it in for you to be posted online. You may also send me pictures to put on the website, send to the member challenge or Facebook challenge Note if your picture is for Artwork of the month or just to post as part of your portfolio of work or for the Facebook Challenge!.

The Mesa Art League board is issuing a Facebook challenge to all who want to participate. The challenge is:

“Art in the Age of COVID-19”

This challenge is open to both League Members and Non-members as well.

Participants do need to join the group on Facebook, “Mesa Art League AZ”.

So if you are a Mesa Art League member and haven't yet joined, we encourage you to do so.

Please tell your artist friends about this challenge also. We'd like to see as many folks participating as possible.

If you know a member that doesn't use Facebook or even the internet, be a good neighbor and offer to post the art piece for your friend. (See next page for details.)

**CHALLENGE**

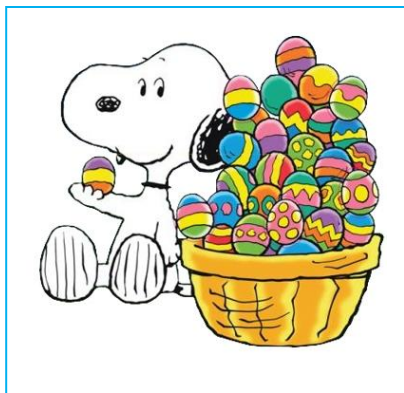
**For Facebook**

The art should be a recent piece, particularly something you are currently working on during this time of self-isolation.

Submissions will be your choice,  
2d or 3d, painting, oils, acrylics, watercolors, miniatures, sculpture, jewelry, pottery, ceramics, porcelain or welding.

Remember your photograph is going to be important! Get the best photograph you can! Size doesn't matter but quality does!

Crop your photo so it doesn't include background.



## NEXT SUBMIT YOUR WORK:

If you have already joined Mesa Art League AZ, in Facebook, start posting next week. If you haven't joined our Facebook Group yet, join now!

Remember, you don't need to be a League member to join the group! So members, **please share this email with all your artist friends** & encourage them to participate.

Winner will receive a free membership to the **Mesa Art League**, or members get a one year free renewal! Voting will be determined by how many "likes" a piece of art received. The art with the most "likes" will be chosen at the end of April.

We hope you & your friends consider joining us ♥☐

The Mesa Art League

**Upcoming Shows!**

**Holland in October!**

**SEE NEXT PAGE**

**VOLUNTEER TO HELP MAKE THIS ONE OF OUR BEST SHOWS!**



# HOLLAND SHOW

That's right! **OCTOBER!** I was able to move to October as those folks cancelled. Hopefully, this date change will enable our snowbird members to participate! We have the hall AND display cases for 3D and jewelry pieces. Please read the attached for critical dates from Holland. We will have critical dates in addition. One of those dates, **June 12 is still our cut off for submittal.** You will be getting submittal information soon.

Even though we are isolated and probably won't have meetings soon, we can use this time at home to really get organized for the exhibit.

We need coordinators for the following areas. As the coordinator, feel free to establish a team. Rosalie and I will oversee efforts among the coordinators.

1. **VET EXHIBIT.** The front hall, which will be reserved for our vets and handled as a separate show. As I had volunteered only to handle the gallery, we need coordinators for this aspect. As many of the vets are not members of MAL, separating the shows can facilitate an exhibit tailored to their visions. The vet coordinator will oversee all aspects of this portion of the exhibit as it will be separately handled and advertised. Failing to get a coordinator, vets will have to be members of MAL and will be subject to the jury process, which may restrict their ability to participate.
2. **PUBLICITY.** We need blurbs sent to media. Generally just 3 or 4 sentences. Print media have a 90 day lead from the date of publication. So that would be 90 days from Sept 1 which would be June 1. We will also need digital postcards for everyone to share on social media, our website, and emailing to friends.
3. **RECEPTION.** We'll need food, beverages, silverware, napkins and linens for the table. Let's remember the demographics of our venue and really make this great! I have a list of food and beverages for us but need a shopper and set up crew to help. We'll do awards at the reception.

4. **MISCELLANEOUS.** We'll need awards, music and artists for the coffee and art talk. This is an opportunity to discuss your work with potential buyers! You just need a 3-5 minute talk about your style (reference a famous, inspiring artist maybe) and your approach to your work. Signage (banners?).
5. **INSTALLATION.** Hanging and wall labels. Pretty much got this but a few more souls are always welcome!

Please reach out to me if you have any questions. 303.550.5215. I'm home! Please call me if you are able to coordinate an area or help in any area. I have a master Event Checklist that I will maintain to help make sure nothing falls in the cracks!

Let's get our teams together by May 1 so we're ready to move into action! May 1 seems early but much of the work does have early deadlines, such as publication, music coordination, and the vet exhibit. So let's get our teams in place by May 1!

This is going to be an amazing exhibit for MAL!

Nancy Nowak Utech  
303.550.5215  
[nancyutech@gmail.com](mailto:nancyutech@gmail.com)



**Rosalie Trulli Vaccaro** has recently won 1st Place in Oils at the Gilbert Visual Art League's Members Show in February. It was for the painting "The Real Selfie," oval, (20" x 16").

Rosalie also won an Honorable Mention, for drawing with "Masquerade." The drawing is 12" x 24" on gray paper. Both paintings are available for purchase.

Also see Rosalie's work in the "Best & Brightest" show at Scottsdale Artist School. The drawing of "Michael" is hanging for all to see.

She has also been chosen as one of 30 artists in the Herberger Theater Art Gallery Show, "In Celebration of Women," a show of diverse art and women artists with the theme of 100 years of women suffrage. The show will be there until April 27, when it will be moved in its entirety to the Arizona State Museum until Sept. Rosalie entered a portrait of her Mom@95.



**MOM at 95**



**Masquerade**

**AAA News** - Go to the AAA website

for the latest news.

<https://azartalliance.com>

Other websites:

<http://www.artresourcecenter.org/>

<http://www.brushandpen.com/>

<https://www.mesaartscenter.com/classes>

<https://smile.amazon.com/ch/86-6056160>



**The Real Selfie**



From [Lucy Wong](#)...

Homemade Hand Sanitizer

32 teaspoon of rubbing alcohol 70% or higher  
16 teaspoon of aloe vera gel

Thank you Lucy!

**A message from Eric Rhoads**

Each day, I'm providing art instruction with top artists. Broadcasting will begin at 3 pm EST right from the Streamline Art Video Facebook page.

This will run for approximately one hour and will feature one of our master artists painting a part of a painting, along with an interview with the artist. Each day will be different.

We plan to do this for as long as we're locked down.

To watch these broadcasts:

1. Open Facebook
2. Search "Streamline Art Video" (or just click on [this link](#))
3. Follow Streamline Art Video
4. Wait for the broadcast to start at the time listed. It will pop up automatically.
5. Click to view the broadcast

**Our art library at Sunland Village East was given a bunch of doll making books that we can't use. We are on lock down here so I can't get them now. Are you interested?  
Contact Elaine Dube**

Vivian Stearns-Kohler shared videos:

Learn to Draw with Alan Picard

Draw a Dog on Toned Paper

Paint Cat Eyes in Colored Pencil with Mark Menendez

Fork Drawing!

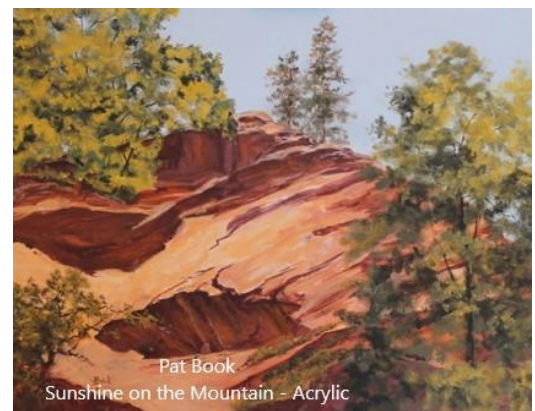
And other ideas:

Keep Track of Business: Benefits of Art Database

How to Make a Facemask



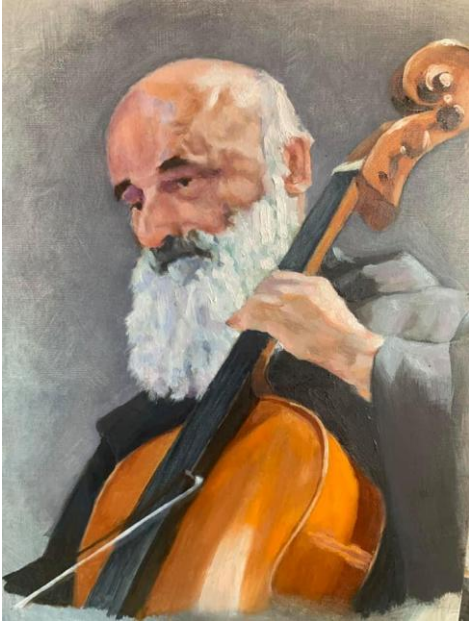
Henry Matisse in bed with flu!



Pat Book



Pictures from Facebook



Joe Borik



Alicia Short



Linda Jones



Kathy McClure (by Judy Bottler)



Lydia Quinones



Vivian Stearns-Kohler



Check it out...Free color cheat sheet...

COLOR THEORY CHEAT SHEET

for Beginners

Come Join us on Facebook  
at Mesa Art League

You just don't know what  
you are missing!

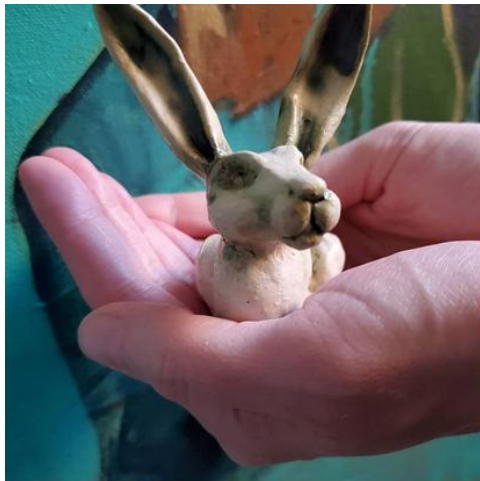


© 2020 Kathy C. McClure

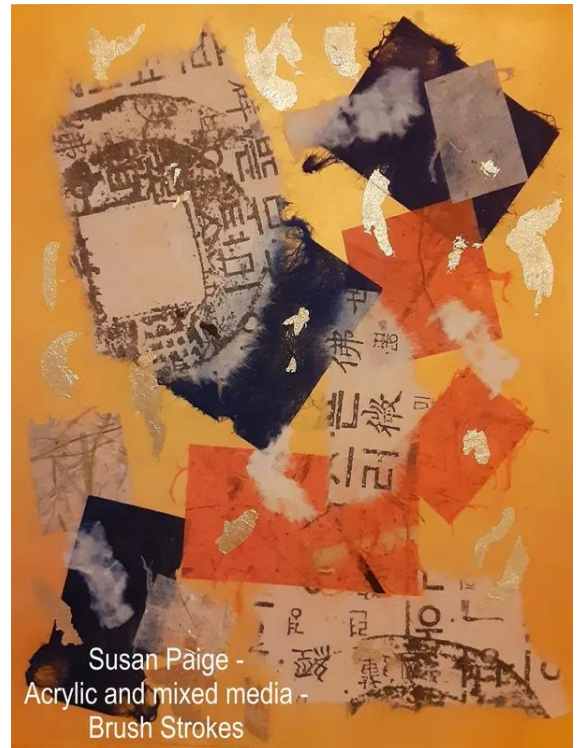
Judy Bottler is Devilishly Clever by Kathy McClure



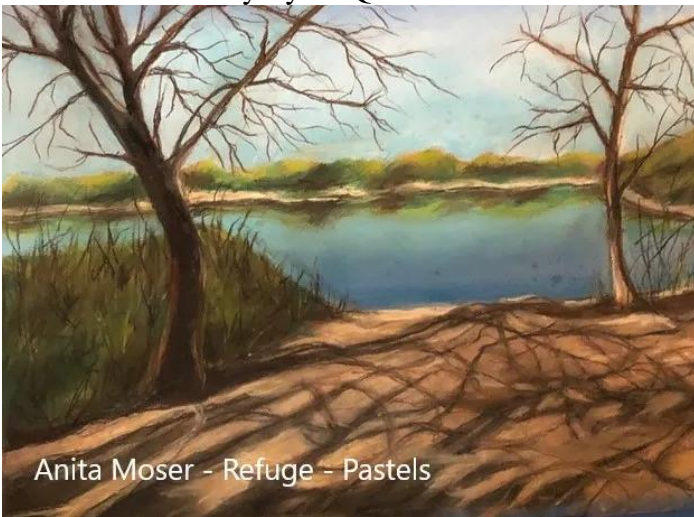
# Gallery from MAL Website



We will get to see these demoed one day –  
by Lydia Quinones!



Susan Paige -  
Acrylic and mixed media -  
Brush Strokes



Anita Moser - Refuge - Pastels



Allen DiMauro -  
Acrylic -  
The Next Project

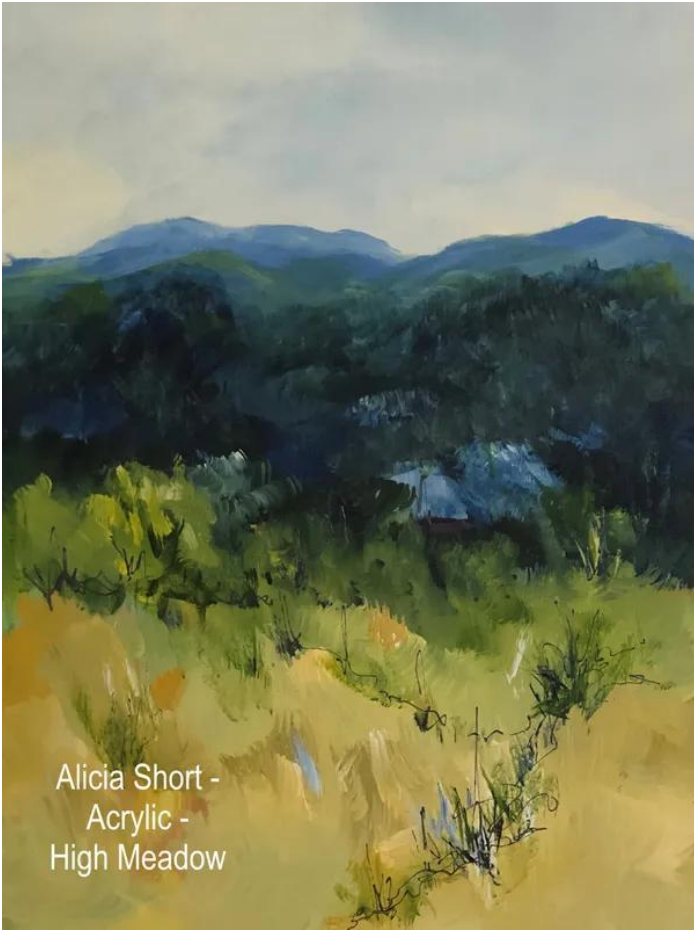


Barry Rosenblatt - Acrylic -  
Sedona Sunset



Pat Book  
Lucky Cat on porcelain





Alicia Short -  
Acrylic -  
High Meadow



Nancy Briggs - Acrylic - Salute



Mike Grill - Mixed Media



Vivian Stearns-Kohler -  
Oil - Bird of Paradise



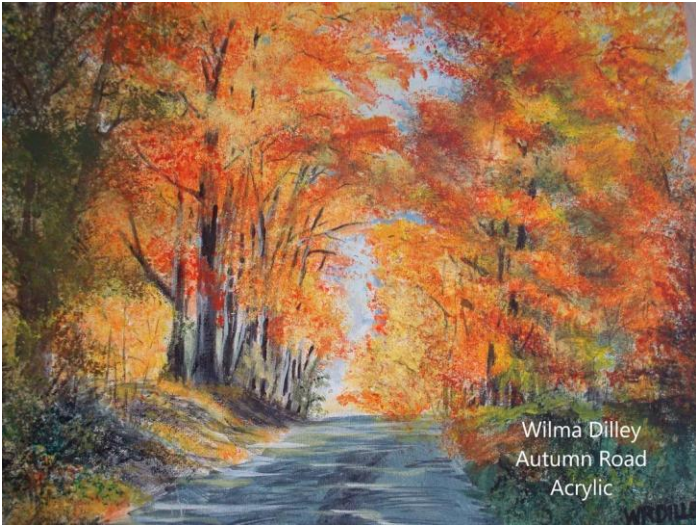
Judy Denson - Acrylic

Take a look at the MAL Website!

**Send pictures of your work to Sharon  
to be added to the site!**

<https://mesaartleague.com/>





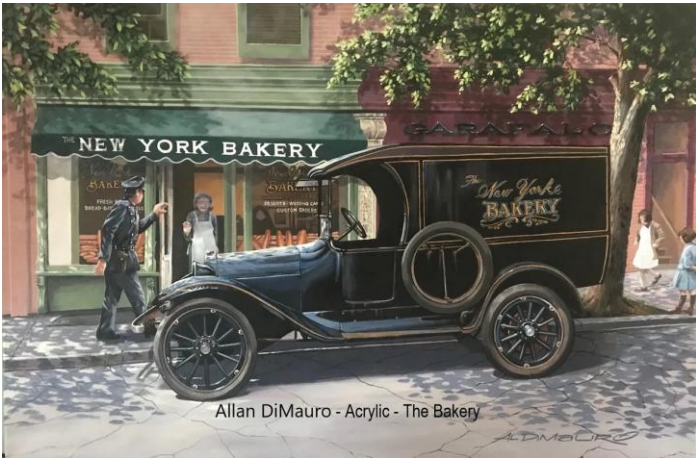
Wilma Dilley  
Autumn Road  
Acrylic



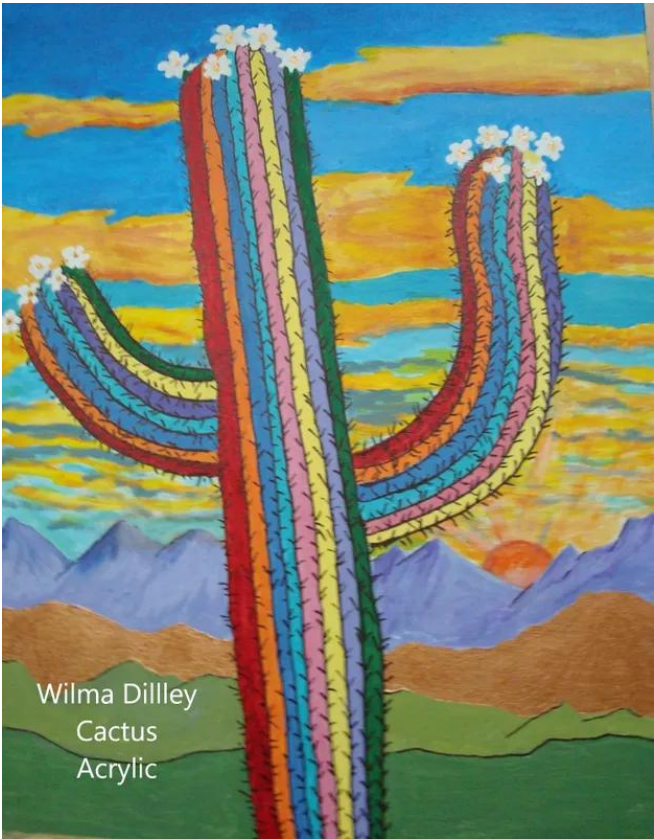
Linda Jones



Mike Grill - Scratch Art -  
Midnight in Moscow



Allan DiMauro - Acrylic - The Bakery



Wilma Dilley  
Cactus  
Acrylic





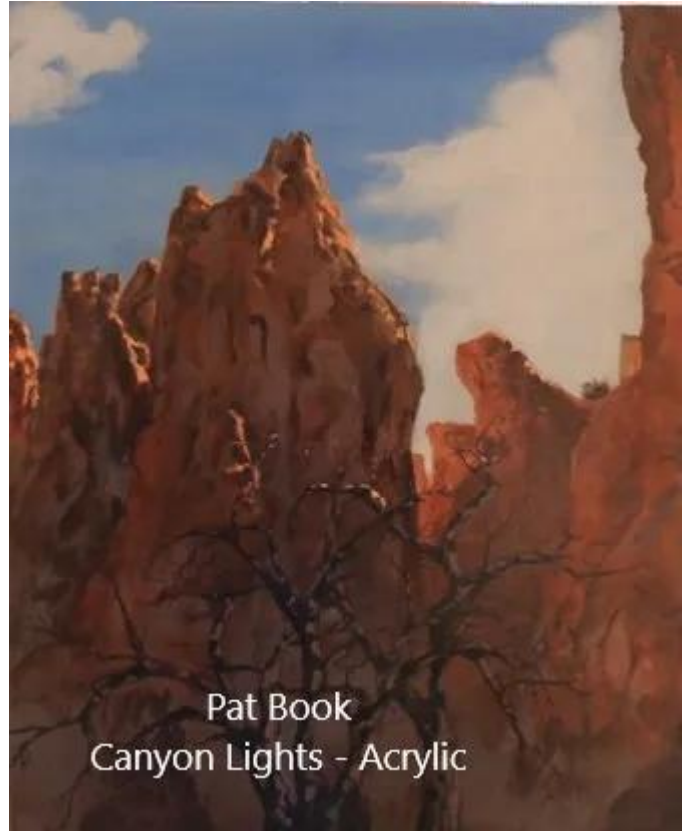
Rosalie - Oil - Broken



Susan Paige  
Mystic Landscape  
Acrylic



Barry Rosenblatt  
Wheeling Flag  
Acrylic



Pat Book  
Canyon Lights - Acrylic

<https://smile.amazon.com/ch/86-6056160>



P.O. Box 7733  
Mesa, AZ 85216-7733

CREATING TOMORROW, TODAY! SUPPORT OUR PARTNERS

These Partners Donate gift cards, giclee prints, gift baskets and much more! When you buy from them, Say Thank You!

Jerry's Artarama -<http://www.jerrysartarama.com>

Blick's - <http://www.dickblick.com>

Joseph Conradi Family proudly supports the Mesa Art League Veteran's program and the League's participation in Artist Emporium.

Giclée: Art Print Editions –  
<http://www.artprinteditions.com>

Wuertz Gourd Farm - [www.wuertzfarm.com](http://www.wuertzfarm.com)

**Wuertz Gourd Farm**  
2487 E. Hwy 287, Casa Grande, AZ 85194  
520-723-4432 \* [www.wuertzfarm.com](http://www.wuertzfarm.com)  
email: [wuertzfarm@wuertzfarm.com](mailto:wuertzfarm@wuertzfarm.com)  
Open Tues-Sat  
8am-5pm  
Closed Sun & Mon

**Newsletter Advertisers Gain exposure with a paid monthly ad in Brushstrokes while helping to support local art!**

**Blick & Utrecht, together bringing you the largest selection of quality art materials.**

**VISIT US IN:**  
**TEMPE**  
930 E. UNIVERSITY DR.  
480-446-0800

**THE BARNSWALLOW STUDIO & FRAME SHOP**

**PROVIDING SUPPORT SERVICES TO ARTISTS**

CUSTOM FRAMING • DIGITAL SERVICES  
PHOTOGRAPH ARTWORK  
NEGATIVE SCANNING • COMPUTER SERVICE  
INVENTORY AND BOOKKEEPING SERVICES

Discount on framing to current MAL members  
We help artists with all their finishing needs.

Hours by appointment only - CALL 480-987-3257  
[kcmpics@juno.com](mailto:kcmpics@juno.com)

Located east of Queen Creek. Pick-up and delivery available.

*fine*  
**Giclée**  
*art prints*

*Over 30 years serving artists throughout the United States.*

*We do it right and our prices are reasonable!*

*Please call our Mesa studio for an appointment..*  
480 227 2891

**Artprint**  
*editions*  
[www.artprinteditions.com](http://www.artprinteditions.com)

Welcome to **amazon smile**

You shop. Amazon gives.

- Amazon donates 0.5% of the price of your eligible AmazonSmile purchases to the charitable organization of your choice.
- AmazonSmile is the same Amazon you know. Same products, same prices, same service.
- Support your charitable organization by starting your shopping at [smile.amazon.com](http://smile.amazon.com).

Your shopping will support **Mesa Art League Inc**

[Start shopping](#)

[Select a different charity](#)

**JERRY'S ARTARAMA**  
Empowering Artists Since 1968

[www.JerrysArtarama.com](http://www.JerrysArtarama.com)