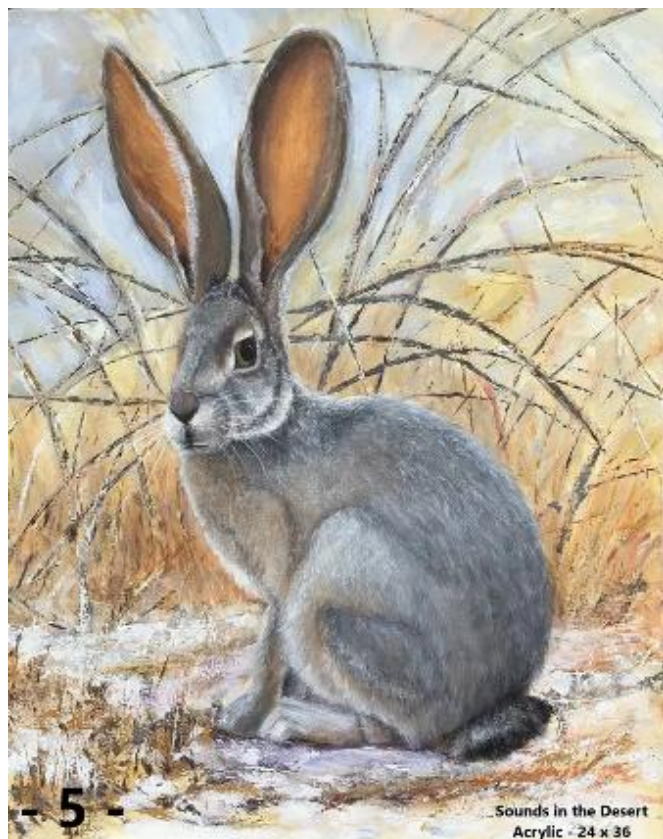




Artwork of the Month -October
Lynda Cheeley – Sounds in the Desert



December 2020



A WORD FROM THE PRESIDENT

Hope you all had a safe Thanksgiving. I can't believe it is December already.

Some of you had an opportunity to see Lydia's demo last month. Not only was it instructive, but learning about her role in the development of at risk children was amazing. It proves the importance of art - or other creative endeavors - in our life. Even Plato said that children should learn to sing or create in other ways before going on to other learning. It is a sad state of affairs when they take art and music out of the daily routine in our schools. That's where we as parents, grandparents, and friends can help. Share your creative joy with others. It does make a difference.

Merry Christmas, Happy New Year, Happy Hanukkah and Keep on Creating

Loralee

"Sounds in the Desert" is one of a series of wildlife paintings I have been working on during summer isolation. My work is inspired by my extensive travels across the United States in our motor home where I have had many enriching experiences and developed new concepts for my paintings....

Upcoming Shows!

MAL Holland Show February 2021

In this issue:

A Word from the President - pg. 1
Lynda Cheeley, Artwork of Month – pgs. 1 & 7
Upcoming Shows – pg. 2
Spotlight on Patricia Book – pg. 3-4
November Artwork of the Month pg. 5
Remember Dorothy Bryd pg 6
Websites & Sell Your Art – pg. 6
Wanted: Artists to Demo – pg.. 8
Vet Classes for Nov/Dec- pg. 8
Join us for Members Blog pg. 9
Our Partners in Art – pg. 10

**MESA ART LEAGUE EVENTS, ACTIVITIES, VETERAN CLASSES AND DISPLAY
SCHEDULES ARE ONLINE DUE TO THE COVID 19 VIRUS**

BOARD MEMBERS

President

Loralee Stickel-Harris

Vice President

James Corrigan

Treasurer

Linda Jones

Secretary

Brenda Jackson

Email any officer or venue director at malmesainfo@gmail.com & include their name in the subject line.

DIRECTORS

Hospitality

Kathleen Cochran

Artwork of the Month

Elizabeth Scriba

Demo Programs **NEEDED!**

Membership

Sharon Corrigan

Newsletter

Pat Book

Publicity: NEEDED!

Historian

Suzanne Leslie

Art Shows **NEEDED!!**

Arizona Art Alliance Rep

Sheryl Stradling

Members Scholarship

Linda Allen

Festival of the Arts

John Brewer

Ad Representative

Diane Lenay Black

MEMBERSHIP SCHOLARSHIP - Scholarships are available to MAL members for attending a special workshop or class. You can apply for up to a \$250 scholarship to help with the tuitions. Due dates to apply for 2020 are: Feb 29, May 31, Aug 31, Nov 30. See application at:

www.mesaartleague.com/pdf/Membership/MAL-Membership-Scholarship-Contest.pdf

Upcoming Shows!

Holland -- February 2021

**VOLUNTEER TO HELP MAKE
THIS ONE OF OUR BEST SHOWS**

**If you are interested in helping out, send
Loralee a note.**

Mariposa Point Assisted Living of Mesa

John Brewer, 602-574-7576 Director

Canyon Winds

Vivian Stearns-Kohler, Director

Mesa Senior Center

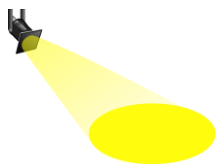
Wilma Dilley, Director

Adalante Healthcare

Elizabeth Scriba

Wilma Dilley





Spotlight of the Month on **Patricia Book (Pat),**

our newsletter editor.

I can remember drawing as a child and coloring but was never very good. I didn't stay in the lines. But in about 5th grade I drew some pots in charcoal in our art class and was rather happy with them. I began porcelain painting after I moved to Colorado and took classes about a year prior to moving to Arizona. I got my first cat living in Colorado and brought Dukers here to Arizona. When I really began to paint on porcelain, cats were a favorite subject – if I got the eyes right, then I got the animal right. The urn I painted won a 5th place at the Arizona State fair and then I was off... People are another matter!

I consider myself a “copyist” – if I can see a picture I can copy something that I like. Since it isn't “art” from my own brain, I have to rely on pictures I take of scenes, flowers, cats or other images.



I particularly like the Arizona Borders Plate that was painted from a variety of different scenes from the desert. This plate actually sold at our venue on Main Street some years ago. But cats and even dogs are easier for me to capture. I took classes from numerous porcelain artists and learned so much from each of them but was never fortunate enough to take courses on painting in college. Instead I earned an MA and BA in communication at ASU – and during that time I did not get to do any painting at all. So after my first classes in 1986, it was about 1999 before I really began painting porcelain more regularly.



Duke of Earl's Urn



Arizona Borders

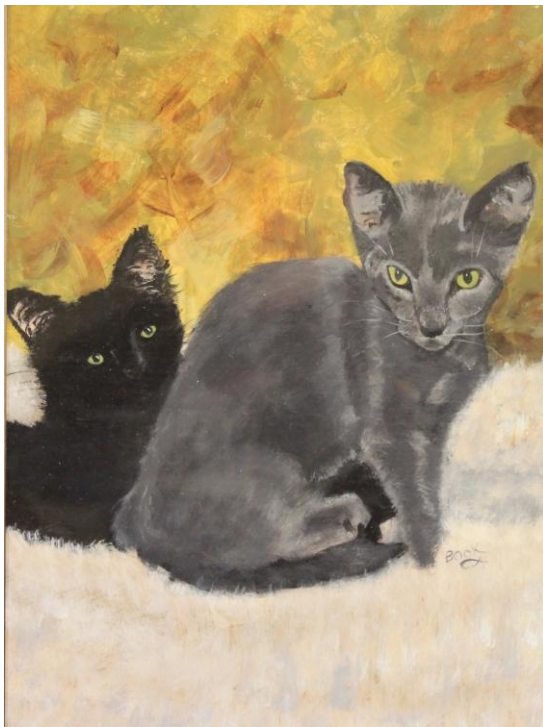
Porcelain is a difficult medium to master because the surface is slick and paint has to be fairly smooth and not piled up— or it can pop and it takes off the glaze which ruins the picture. Recently I took classes in oils and then acrylics and I have dabbled in watercolor as well; I love to get lost in my art and can paint for a number of hours but not every day. The lack of endurance I have as I age makes it more difficult to complete the work I want but when something turns out well – then I am pleased. I especially enjoyed the silhouettes I painted on ornaments this year.



Lucky Katz



Little Bit

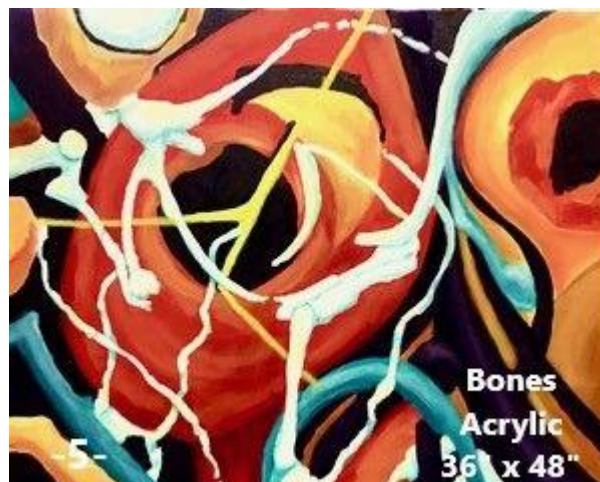
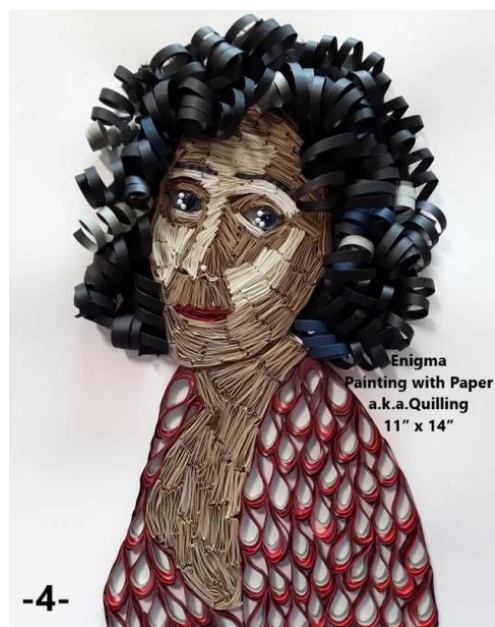
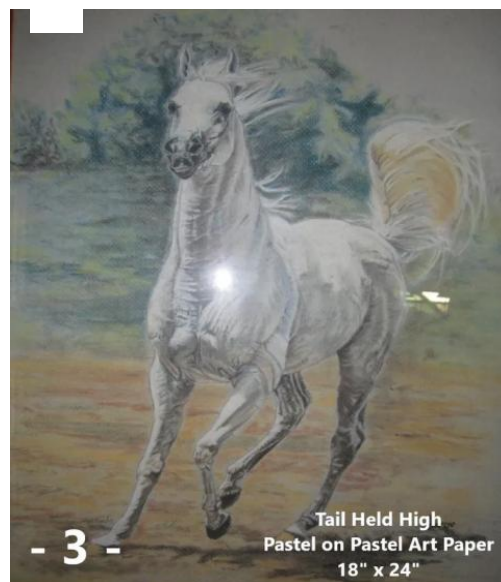


Two Kittens – Acrylic



2020 Silhouette Ornaments

November Artwork of the Month



**We will miss longtime member,
Dorothy Bryd**

May 23, 1927 – October 17, 2020



Dorothy Bird by Rosalie Vaccaro



SELL YOUR ART!

Dear Members,

We have opened our own **Gift Shop...**
Check online under **SHOP...**

You set your own prices, decide whether to include shipping or price into your item and handle your own sales and taxes!

Send your pictures and submission form to MesaArtOnline@gmail.com to add your sale pieces.

Contact Linda Jones @ MesaArtOnline@gmail.com for further information.

WEBSITES

AAA News - Go to the AAA website

for the latest news. <https://azartalliance.com>

Other websites:

<http://www.artresourcecenter.org/>

<http://www.brushandpen.com/>

<https://www.mesaartscenter.com/classes>

AMAZON SMILES ON MAL

<https://smile.amazon.com/ch/86-6056160>

NOVEMBER ARTWORK OF THE MONTH

You will be sending your vote to

MesaArtOnline@gmail.com,

Please put in the subject line:

Website Art Challenge;

Include the number of the art piece in the body of the email when you vote and please vote for only one piece.



Artwork of the Month online!

The pieces that are now on the website are the ones for the month of November

Voting will start on December 1st to December 7

Please send your vote to

MesaArtOnline@gmail.com,

Votes will be counted after December 7th

at 12 pm & results revealed

December 8th at the monthly meeting!

Lynda Cheely, Artwork of Month Cont.

As an artist, I strive to develop paintings that uplift the spirit through the use of light and shadow that illuminates the heart. This involves the use of many layers that reflect the emotional, physical and spiritual dimensions of the human experience. I often hear that my paintings reflect a familiar world that evokes a memory or emotion.

I received training in classical as well as contemporary art techniques as an undergraduate in college, at Milan Art Institute and classes from various professional artists. My work is enjoyed by collectors and has been seen in Simone Beckett Gallery, Gallery-220 and High Country Art Gallery.



VET CLASSES!

Please check out the website and Facebook for the details.

If you are interested in participating, send a note to

mesaartveterans@gmail.com with Veteran's class in the subject line.

Classes begin on Zoom at 10 am

December 8 & 22

Patricia Book

Learning to paint on porcelain!



Supplies needed:

Paper towels

Sharpie to mark china

Masking tape or painters tape

All other supplies provided

**Join us on Zoom for the
Monthly Meeting on
December 8th– Send a note to
mesaartonline@gmail.com
with December Zoom Meeting in the
heading of your email – You will be
asked to download Zoom and given a
password to enter.**

The meeting will begin at 6 pm.



WANTED!

Members or Artists willing to provide a 30 to 40 minute Demo for our Zoom Meetings with a 10 minute Q & A at the end – This can be a brief technique or something about art history or whatever you desire!

Members Art Critique – Send in your art for Critique! Take a picture and send as attachment with Critique in the subject line.

Members to attend our Meeting!
Drawings are back!

Send to MesaArtOnline@gmail.com



Member's Online Blog!

While each of us have joined the Mesa Art League for different reasons, one of the many reasons is to network, share experiences and learn from each other. Therefore, initiated at this unique time of Covid-19 that keeps members from gathering together in our customary way, we created a Website Blog, amongst other things.

Each week we post a new question for our members to address. We encourage members to share thoughts, tips, techniques and even ask questions of your own. We hope to slowly make this a learning tool by taking different media and inviting members that specialize in that medium to give tips, brief instruction and even answer questions?

Check us out on our Blog Page of Mesaartleague.com or on our Facebook Group Mesa Art League AZ. You could also send responses and questions to: sc.malmembership@gmail.com and we will post for you. Hope to hear from you soon.

Question of the Week - Nov. 23, 2020

This has been a tough year for sure! We have all been impacted! Some more severely than others. However, a special annual holiday fast approaches....Thanksgiving!

For many of us, this holiday will be much different than in years past! Perhaps we've lost a loved one? Perhaps, family will not gather together as in the past? However, even in adverse times one could recognize and feel gratitude in the midst of life's challenges!

Question? What if we each took a moment to offer and share words of gratitude for something in our lives at this time of Covid?

Question of the Week - Nov. 16, 2020

"How do you sell online or in person? What techniques can improve sales of items – I am tired of just making things to hang in my home."

Question of the Week - Nov. 10, 2020

Do you stand at an easel and draw, same as you do when you paint? Do you work on a flat table or desk? Table top easel? What have you found to be both most comfortable and best for drawing your subject matter when using various types of pencils?

Join us and ask or answer questions! – Send your questions in soon!



P.O. Box 7733

Mesa, AZ 85216-7733

CREATING TOMORROW, TODAY! SUPPORT OUR PARTNERS

****MESA CHAMBER OF COMMERCE ****

Jerry's Artarama - <http://www.jerrysartarama.com>

Blick's - <http://www.dickblick.com>

Joseph Conradi Family proudly supports the Mesa Art League Veteran's program and the League's participation in Artist Emporium.

Giclée: Art Print Editions –

<http://www.artprintedititions.com>

Wuertz Gourd Farm - www.wuertzfarm.com



Blick & Utrecht, together bringing you the largest selection of quality art materials.

VISIT US IN:
TEMPE
 930 E. UNIVERSITY DR.
 480-446-0800

THE BARNSWALLOW STUDIO & FRAME SHOP

PROVIDING SUPPORT SERVICES TO ARTISTS

CUSTOM FRAMING • DIGITAL SERVICES
 PHOTOGRAPH ARTWORK
 NEGATIVE SCANNING • COMPUTER SERVICE
 INVENTORY AND BOOKKEEPING SERVICES

Discount on framing to current MAL members
 We help artists with all their finishing needs.

Hours by appointment only - CALL 480-987-3257
 kcmpics@juno.com

Located east of Queen Creek. Pick-up and delivery available.

***fine
Giclée
art prints***

*Over 30 years
serving artists throughout
the United States.*

*We do it right and our prices
are reasonable!*

*Please call our Mesa studio
for an appointment..
480 227 2891*

***Artprint
editions***
 www.artprintedititions.com

Welcome to **amazon smile**

You shop. Amazon gives.

- Amazon donates 0.5% of the price of your eligible AmazonSmile purchases to the charitable organization of your choice.
- AmazonSmile is the same Amazon you know. Same products, same prices, same service.
- Support your charitable organization by starting your shopping at smile.amazon.com.

Your shopping will support **Mesa Art League Inc**

[Start shopping](#)
[Select a different charity](#)

<https://smile.amazon.com/ch/86-6056160>



**JERRY'S
ARTARAMA**

Empowering Artists Since 1968

www.JerrysArtarama.com