

Artwork of the Month – April  
**Jane Bradley’s “Dorothy”**



Since she first picked up a paint brush at fourteen years old, **Jane Bradley** has reveled in color. Simple line drawings of people and horses now took on shades of meaning and emotion. To this day, color animates her richly-hued canvases. Second only to color is her love of rendering the human form. . “There is a whole world to be discovered in a face, in a gesture, in the subtle turn of a hand,” she says. “This is my frontier, something for which I never get tired of exploring. My enthusiasm spills over into my teaching and I try to bring people along on this adventure.” (Continued on page 4)

**Upcoming Shows**

**Vet Show at Holland in November 2020**

**Holland in February 2021**

**JUNE 2020**

A WORD FROM THE PRESIDENT



Hope you are all safe and well. We are 4 months in to isolation. How much art have you done? I've found that the less I do the less I want to do. It's hard because I can't do my normal metal art. I've been trying to find other ways, but no inspiration yet - or am I procrastinating. Not sure. Actually we've had some very inspirational art for our Facebook contest and for our on line artwork of the month.

Our May online meeting worked, but we all missed the food, raffles, and the personal conversations. We are looking at doing on line critiques and a demo (probably a lecture on an artist or movement). Check out our Facebook Group Mesa Art League AZ and our web for updated information. **See ZOOM meeting on page 8 to attend our June Meeting.**

Stay well and safe and  
Keep on Creating

Loralee

**In this issue:**

- A Word from the President - pg. 1
- Jane Bradley, Art Winner for May – pgs. 1 & 4
- Member Scholarship pg. 2
- Streamline Art Video on Facebook- pg. 2
- Upcoming Shows – pg.. 2
- NEW! Member Spotlight** – pgs. 3 - 4
- beconnected for Vets** – pg. 4
- May Artwork of the Month pgs. 5- 7
- Vote for Artwork & Submit for June – pg. 8
- Websites & Vet Classes – pg. 9
- Baby Boomer’s Show pg. 9
- NEW! Member’s Online Blog** – pg. 9
- Our Partners in Art – pg. 10

## BOARD MEMBERS

### President

Loralee Stickel-Harris

### Vice President

James Corrigan

### Treasurer

Linda Jones

### Secretary

Brenda Jackson

Email any officer or venue director at [malmesainfo@gmail.com](mailto:malmesainfo@gmail.com) & include their name in the subject line.

## DIRECTORS

### Hospitality

Kathleen Cochran

### Artwork of the Month

Elizabeth Scriba

### Demo Programs ??

**NEEDED!**

### Membership

Sharon Corrigan

### Newsletter

Pat Book

### Publicity

**NEEDED!**

### Historian

Suzanne Leslie

### Art Shows NEEDED!!

### Arizona Art Alliance Rep

Sheryl Stradling

### Members Scholarship

Linda Allen

### Festival of the Arts

John Brewer

### Ad Representative

Diane Lenay Black

**MEMBERSHIP SCHOLARSHIP** - Scholarships are available to MAL members for attending a special workshop or class. You can apply for up to a \$250 scholarship to help with the tuitions. Due dates to apply for 2020 are: Feb 29, May 31, Aug 31, Nov 30. See application at:

[www.mesaartleague.com/\\_pdf/Membership/MAL-Membership-Scholarship-Contest.pdf](http://www.mesaartleague.com/_pdf/Membership/MAL-Membership-Scholarship-Contest.pdf)

### Mariposa Point Assisted Living of Mesa

John Brewer, 602-574-7576 Director

### Canyon Winds

Vivian Stearns-Kohler, Director

### Mesa Senior Center

Wilma Dilley, Director

### Adalante Healthcare

Elizabeth Scriba

Wilma Dilley in June & July



## Upcoming Shows!

**Vets at Holland in November 2020**

**Holland -- February 2021**

**VOLUNTEER TO HELP MAKE  
THIS ONE OF OUR BEST SHOWS**

**If you are interested in helping out,  
send Loralee or Vivian a note.**

**We will also have a special Veteran  
Art exhibit in hallway that month.**

## Streamline Art Video

We plan to do this for as long as we're locked down.  
To watch these broadcasts about art:

1. Open Facebook
2. Search "Streamline Art Video"
3. Follow Streamline Art Video
4. Wait for the broadcast to start at the time listed. It will pop up automatically.
5. Click to view the broadcast

**MESA ART LEAGUE EVENTS, ACTIVITIES, VETERAN CLASSES AND DISPLAY  
SCHEDULES ARE ONLINE DUE TO THE COVID 19 VIRUS**



## Member Spotlight

This month **Kathy McClure** is highlighted and recognized for being one of our long-standing members of the Mesa Art League.

Kathy has facilitated a number of Demos and Critiques for our League through the years and served as Treasurer and on the board. It is fitting that we honor Kathy for all she has done and continued to do for us.

A photographer since the age of 8 when I received my first camera as a gift from my grandmother, I learned the art of photography by studying such great artists as George Lepp, Dewitt Jones and Art Wolfe. My inspiration is God's beautiful creation, and I attempt to record it faithfully, shooting landscapes, flowers, animals, and anything that captures my fancy. I shot film until 2012 when I purchased my first pro digital camera. Now I do both, and do all of the creation in the camera before the snap. If the image isn't good enough to print as taken, it is discarded instead of being 'improved' through Photoshop. I have my own darkroom and love making my own prints from negatives. One of my favorite techniques is to hand paint B&W photos with oils or watercolor.

My mission is to go to any part of the world (sometimes places quite difficult to reach) and photograph the beauty found there so that those who cannot travel there can see what I saw. To fulfill that mission, I travel a lot in and out of the country, 'faithfully recording the world to the glory of its Creator.'



I started shooting horses at the racetrack in the '80s and worked as a reporter for horse racing magazines for 30+ years, covering Quarter Horse racing in Arizona. Horses are my first love, and I enjoy photographing them at work and at play. I also love numbers and worked as a bookkeeper for decades, managing everything from billing to inventory to payroll for retail, wholesale and non-profit companies, including managing a counseling firm. I also worked many years with my husband's manufacturing business, learning marketing and advertising principles. Trained to be a teacher, I gave up that work after a few years, only to return to it in the way of developing workshops for adults.

I have been a member of MAL and a juried artist of the Arizona Art Alliance for decades, and served on the board of both organizations. I am a juried member of the Tubac Center of the Arts and have artwork for sale there and at the K. Newby Gallery in Tubac. I also sell artwork online through my website [Kathy-McClure.pixels.com](http://Kathy-McClure.pixels.com), and exhibit photos also at [KCMPhotos.photorelect.com](http://KCMPhotos.photorelect.com). My travels have taken me over many parts of the US, to Mexico and Central America, South America, and even to the Far East. I make annual trips to Ecuador, serving as a translator for medical mission trips. Currently we are working from a rustic lodge on the Cayapas River in Northwest Ecuador – a very remote location.

"All of these passions – horses, travel, God's glorious creation – are united in my love of photography. I've stated that "I'm addicted to the click," but mostly I'm gratified and amazed at what a camera can record."





## Member Spotlight - Kathy McClure Pictures Cont.



Kathy McClure Horses (above)  
And Waterfall (below)



Jane Bradley, Artist of the Month for May

## Jane Bradley Continued...

Jane received her MFA at the University of Utah in painting and Computer Animation in 1991. The twelve years that followed were devoted to her work as a computer animator and eventually as an Art Director for major console and computer game companies. Although she occasionally had done portraits, for the most part her painting had been set aside for her career in computer graphics. Then, in 2004, she decided to return to painting full time.

Since 2004 she has done numerous shows and won many awards for her work. She has participated in the CM Russel Auction, the Scottsdale Salon of Art and the Phippen Museum Western Art Show and Sale, for which she won the 2006 Best of Show for her painting "Red Shoes".

Jane has chosen in the last few years to do fewer shows and instead concentrate on commissions and portraiture. In 2017 she was awarded Best of Show for her painting "Professor of Hip-Hop" in the yearly Portrait Artist of Arizona competition. She won Best of Show in the GVAL yearly show, and recently she was awarded first place in the Women Artists of the West online fall showcase. She is an Associate member with Distinction of the American Women Artists, a member of the Oil Painters of America, the Portrait Society of America, Associate member of Women Artists of the West, and the Portrait Artists of Arizona.

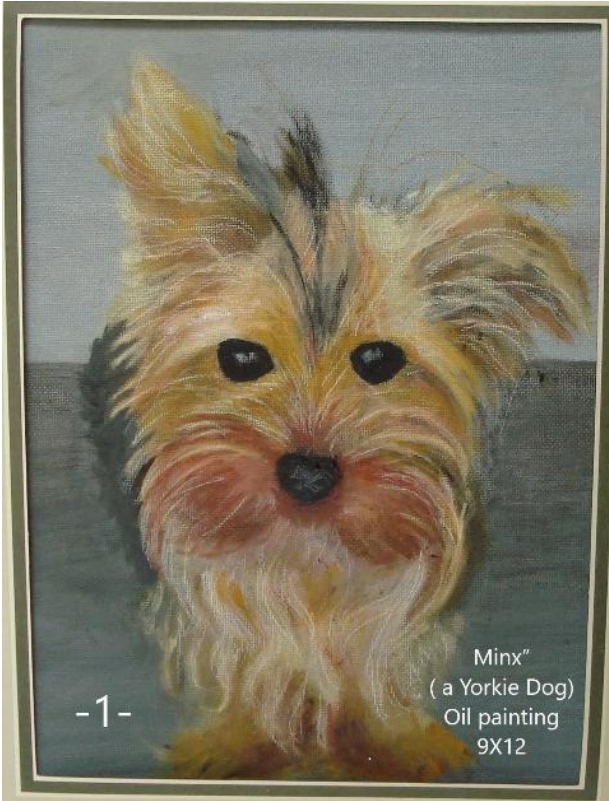
## Beconnected

**Connecting Arizona service members,  
veterans, families & helpers to  
information, support and resources.**

<https://www.beconnectedaz.org/>

May Artwork of the Month

:



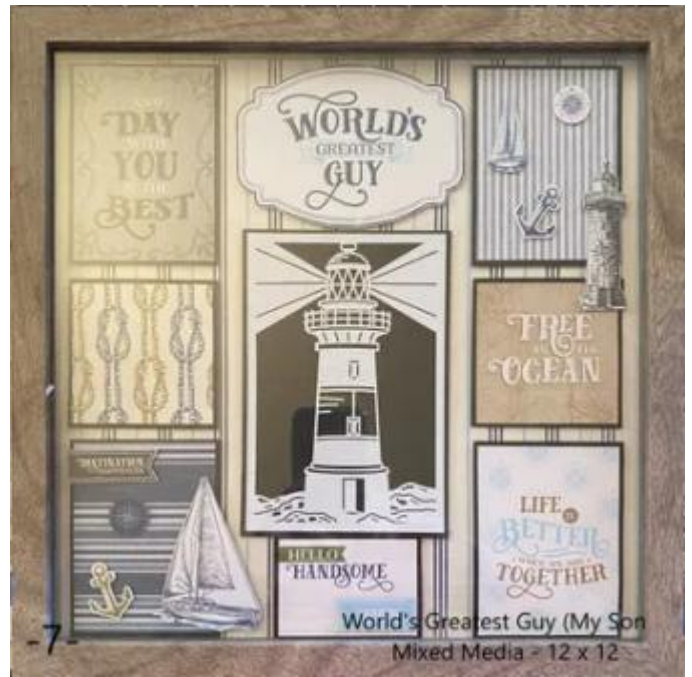


# May Artwork of the Month



-5-

"Sunshine"  
Acrylic  
16 x 20



-7-

World's Greatest Guy (My Son)  
Mixed Media - 12 x 12



-6-

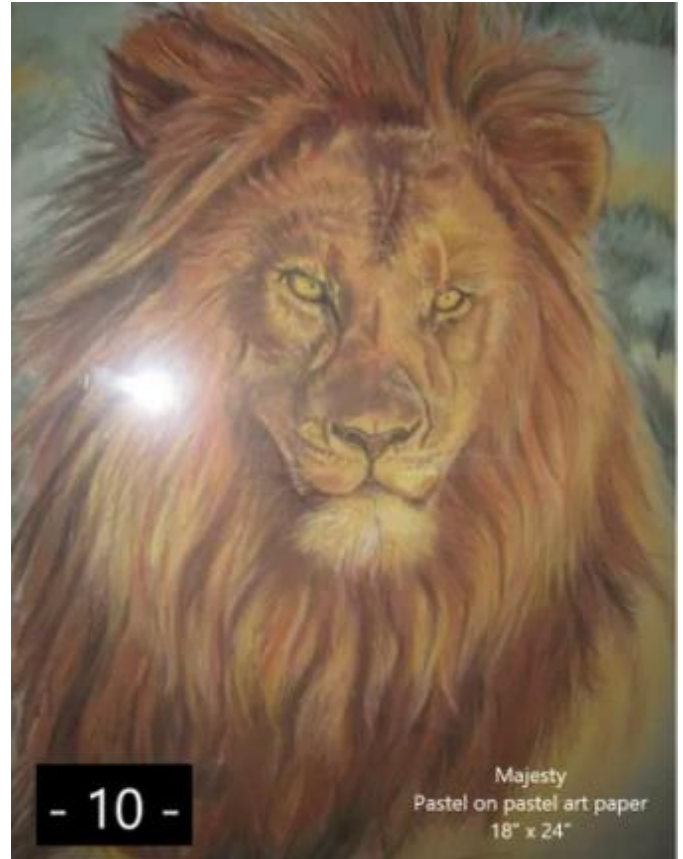
Mothers Day Flowers  
Acrylic - 9 x 11  
petals are raised using glue and salt  
to give the flowers petals texture..



- 8 -

"The Pen and The Sword"  
Oil on Canvas - 21"x27"

## May Artwork of the Month



The art should be a recent piece, particularly something you are currently working on during this time of self-isolation.

Submissions will be your choice, 2d or 3d, oils, acrylics, watercolors, miniatures, sculpture, jewelry, pottery, ceramics, porcelain or welding.

Remember your photograph is going to be important! Get the best photograph you can! Size doesn't matter but quality does!

Crop your photo so it doesn't include background.

You will be sending your vote to [MesaArtExec@gmail.com](mailto:MesaArtExec@gmail.com),

Please put in the subject line:

**For Website Art Challenge,**

**include the number of the art piece in the body of the email when you vote and please vote only once for one piece.**



## Artwork of the Month online!

MesaArtLeague.com

The pieces that are now on the website are the ones for the month of May...

Voting will start on June 1<sup>st</sup>.

Please send your vote to

[MesaArtOnline@gmail.com](mailto:MesaArtOnline@gmail.com),

One vote per member!

Votes will be counted after June 8<sup>th</sup>, 12 pm  
and results revealed

June 9<sup>th</sup> at the monthly meeting!

**When you vote please put**

**in the subject line:**

**For Website Art Challenge**

**and include the number of the art piece**

**in the body of the email.**

**Winner will receive a free  
membership/renewal to the Mesa Art  
League.**

Thank you from the Mesa Art League  
Board

**Join us on Zoom for the Monthly  
Meeting on June 9<sup>th</sup> – Send a note  
to [mesaartonline@gmail.com](mailto:mesaartonline@gmail.com)**

**with June Zoom Meeting in the heading  
of your email – You will be asked to  
download Zoom and given a password  
to enter. The meeting will begin at 5 pm.**

## June Artwork of the Month

**Submit your piece for June Artwork**

**from June 10<sup>th</sup>, after our meeting,**

**to June 30<sup>th</sup> at 6 PM**

**at MesaArtLeague.com**

Please take note of the following points:

1 Once you win in 2020 (January thru November, you are not eligible to enter another piece that year. But you are eligible to enter your winning piece into the 2020 Artwork of the Year contest in December.

2 It matters that you enter: it is an opportunity to exercise courage and learn to be a fearless artist. It also gives our members a chance to get the opportunity to evaluate different art pieces. This is a good art related skill. So, enjoy your art and send us something you enjoy!

3 Under these conditions, it's harder to reinforce rules with framing etc. However, because of the situation we will be more relaxed about framing for the rest of the year. Realize that if we meet before the end of the year the Board and Artwork of the Month Coordinator will make a ruling.

4 Please go to the rules online and re-read the requirements for submitting a work so that we are on the same page to make sure your entry is eligible for the contest. Only complete entries will be posted.

5 Please include the following information with your entry:

...An attached picture of the piece you are submitting.

...Your Name, phone number, address and email.

...The medium of your piece and size in inches.

...The Title (if you do not already have one, make it up. Or just call it your last name with a number.)

6 Please send your entry to:  
[mesaartonline@gmail.com](mailto:mesaartonline@gmail.com) from  
06/10//2020 to 06/30/2020 at 11:59 PM AZ time.



Two Baby Boomer Abstract Women Artists

Sheryl Stradling and Susan Paige

Through June

Come and View Their New Art

OneOhOne Gallery

101 W. Main Street downtown Mesa

Susan and Barry's studio will also be open

With their new art

Saturday Hours 10 -4 and by appointment

Susan Paige 214-207-9277



## VET CLASSES!

June 2 Tuesday from 10 to noon  
June 16, Tuesday from 10 to noon  
June 30 Tuesday from 10 to noon

Please check out the website and Facebook for the details.

If you are interested in participating, send a note to [mesaartonline@gmail.com](mailto:mesaartonline@gmail.com) with Veteran's class in the subject line.

## Flag Day is June 14th



**AAA News** - Go to the AAA website

for the latest news. <https://azartalliance.com>

Other websites:

<http://www.artresourcecenter.org/>

<http://www.brushandpen.com/>

<https://www.mesaartscenter.com/classes>

<https://smile.amazon.com/ch/86-6056160>

## Member's Online Blog!

With the intent of keeping our members engaged and offering a venue where they can share experiences, ideas and Art tips, we have created a Blog on the Mesa Art League Website. We started by asking membership to share their experiences during this unique Covid-19 time. This is an unprecedented time for all! Tell us how you are doing? Have you taken this time to explore new art media or revisit old techniques, etc?

We plan to expand the Blog to focus on Tips & Tricks. As a learning aid, we also plan categories directed at specific media in the future. We hope our many experienced artists will be contributors?

You can now read & comment on the Blog thru our website. You can also send in questions, start a discussion or leave comments by emailing to: [sc.malmembership@gmail.com](mailto:sc.malmembership@gmail.com)

We hope to hear from you soon.



P.O. Box 7733  
Mesa, AZ 85216-7733

CREATING TOMORROW, TODAY! SUPPORT OUR PARTNERS

These Partners Donate gift cards, giclee prints, gift baskets and much more! When you buy from them, Say Thank You!

Jerry's Artarama -<http://www.jerrysartarama.com>

Blick's - <http://www.dickblick.com>

Joseph Conradi Family proudly supports the Mesa Art League Veteran's program and the League's participation in Artist Emporium.

Giclée: Art Print Editions –  
<http://www.artprintedititions.com>

Wuertz Gourd Farm - [www.wuertzfarm.com](http://www.wuertzfarm.com)

**Wuertz Gourd Farm**  
2487 E. Hwy 287, Casa Grande, AZ 85194  
520-723-4432 \* [www.wuertzfarm.com](http://www.wuertzfarm.com)  
email: [wuertzfarm@wuertzfarm.com](mailto:wuertzfarm@wuertzfarm.com)  
Open Tues-Sat  
8am-5pm  
Closed Sun & Mon

**Newsletter Advertisers Gain exposure with a paid monthly ad in Brushstrokes while helping to support local art!**

Welcome to **amazon smile**

You shop. Amazon gives.

- Amazon donates 0.5% of the price of your eligible AmazonSmile purchases to the charitable organization of your choice.
- AmazonSmile is the same Amazon you know. Same products, same prices, same service.
- Support your charitable organization by starting your shopping at [smile.amazon.com](http://smile.amazon.com).

Your shopping will support **Mesa Art League Inc**

Start shopping

Select a different charity

<https://smile.amazon.com/ch/86-6056160>

**Blick & Utrecht, together bringing you the largest selection of quality art materials.**

**VISIT US IN:**  
**TEMPE**  
930 E. UNIVERSITY DR.  
480-446-0800

**THE BARNSWALLOW STUDIO & FRAME SHOP**

Providing Support Services TO ARTISTS

CUSTOM FRAMING • DIGITAL SERVICES  
PHOTOGRAPH ARTWORK  
NEGATIVE SCANNING • COMPUTER SERVICE  
INVENTORY AND BOOKKEEPING SERVICES

Discount on framing to current MAL members  
We help artists with all their finishing needs.

Hours by appointment only - CALL 480-987-3257  
[kcmpics@juno.com](mailto:kcmpics@juno.com)

Located east of Queen Creek. Pick-up and delivery available.

*fine*  
**Giclée**  
*art prints*

*Over 30 years serving artists throughout the United States.*

*We do it right and our prices are reasonable!*

*Please call our Mesa studio for an appointment..*  
480 227 2891

*Artprint editions*  
[www.artprintedititions.com](http://www.artprintedititions.com)

**JERRY'S ARTARAMA**  
Empowering Artists Since 1968

[www.JerrysArtarama.com](http://www.JerrysArtarama.com)