

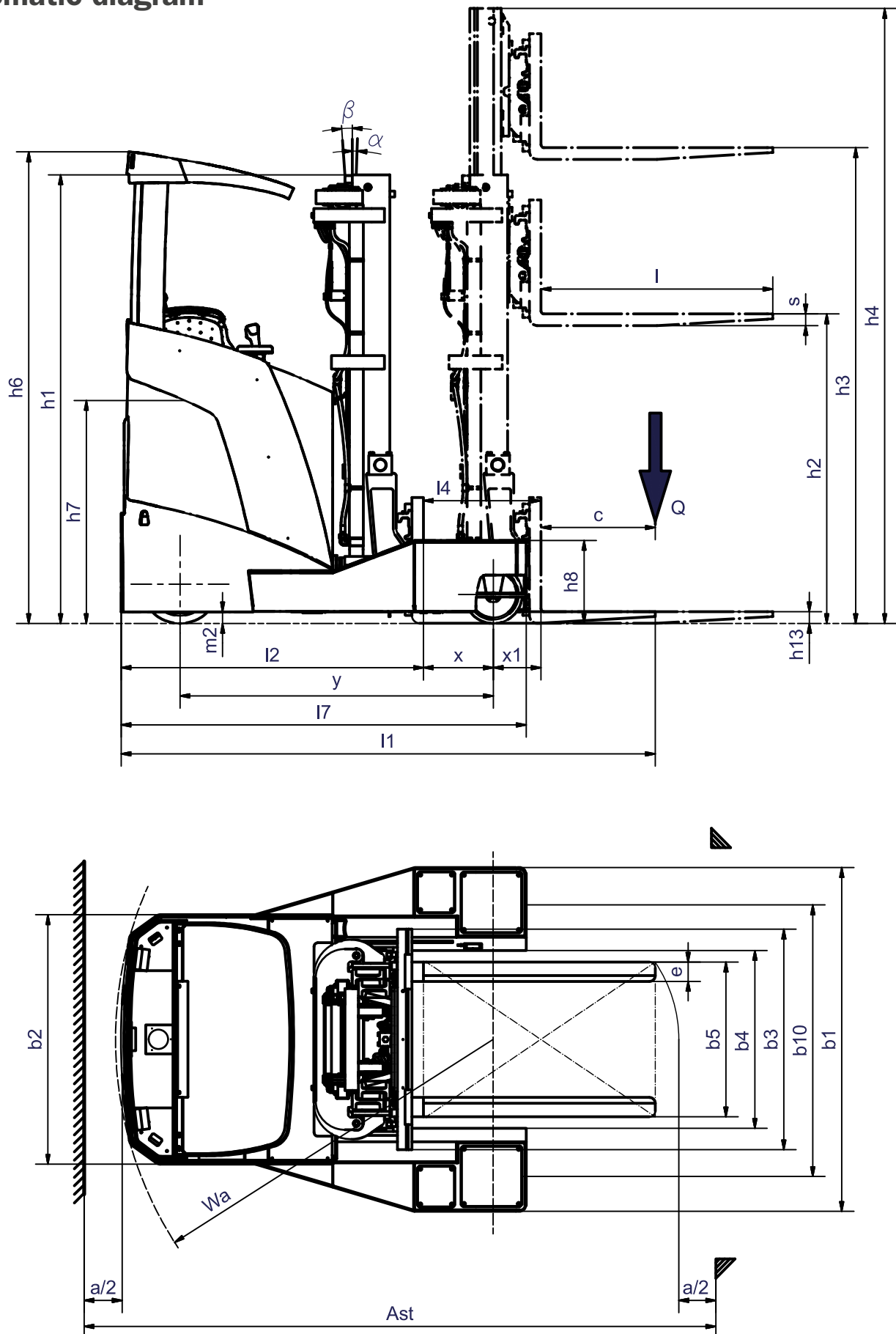
## EFSM-S

### Electric multidirectional heavy duty reach truck

- Moving in any direction by means of electronically controlled all-wheel steering
- Sensitive operation by joystick with superimposed operating function
- Driving, lifting and steering drive in three-phase AC technology
- Genkinger Curve Control, driving speed reduction while driving along a curve = optimum safety



## Schematic diagram



### Technical data

according to VDI 2198, As of: 12/2016

Mark	1.1		Manufacturer (Abbreviation)		Genkinger Material Handling	
	1.2		Manufacturer's designation		EFSM-S	EFSM-S
1.3	Drive				electric	electric
	1.4		Operator type		cross-seat	cross-seat
1.5	Rated capacity/rated load		Q	t	4	4
	1.6		Load centre distance		600	600
1.8.1	Load distance		x	mm	360	350
	1.8.2		Load distance, mast extended		247	247
1.9	Wheelbase		y	mm	1620	1620
	2.1.1		Service weight incl. battery (see 6.5)		5800	5800
2.3.1	Axle loading, w.o. load, forks retracted, front/rear			kg	3938 / 1862	3938 / 1862
	2.3.2		Axle loading, w.o. load, forks forward, front/rear		3508 / 2292	3508 / 2292
2.4	Axle loading, forks forward with load at front/rear			kg	3348 / 6452	3348 / 6452
	2.5		Axle loading, forks retracted with load at front/rear		1460 / 8340	1460 / 8340
3.1	Tyres				Vulkollan	Elastic
	3.2		Tyre size, front		ø406 x 178	ø457 x 229
3.3	Tyre size, rear				ø300 x 75	ø457 x 229
	3.5		Wheels, number front/rear (x = drive wheels)		1 / 4 (1x)	1 / 4 (1x)
3.6	Track width, front		b10	mm	1438	1670
	4.1		Mast/fork carriage tilt, forward/backward		1 / 4	1 / 4
4.2	Height of mast, lowered		h1	mm	2320	2320
	4.3		Free lift		1543	1543
4.4	Lift		h3	mm	4800	4800
	4.5		Height of mast, extended		5577	5577
4.7	Height of overhead guard (cabin)		h6	mm	2440	2440
	4.8		Stand height		1180	1180
4.10	Height of load arms		h8	mm	429	590
	4.15		Height, lowered		60	60
4.19	Overall length		l1	mm	2765	2765
	4.20		Head length		1565	1565
4.21	Overall width		b1/b2	mm	1783 / 1290	2280 / 1290
	4.22		Fork dimensions		50 / 120 / 1150	50 / 120 / 1150
4.23	Fork carriage to ISO 2328, class/type A, B				3A	3A
	4.24		Width of fork carriage		870	870
4.25	Width over forks		b5	mm	336 - 840	336 - 840
	4.26		Width between load arms		920	920
4.28	Reach travel		l4	mm	610	670
	4.32		Ground clearance, centre of wheelbase		60	60
4.32.1	Ground clearance, lowest point				55	55
	4.33		Aisle width for pallets 1000 x 1200 sideways		2965	2965
4.34	Aisle width for pallets 800 x 1200 lengthways		Ast	mm	2965	2965
	4.35		Turning radius		1955	1955
4.37	Length of chassis		l7	mm	2097	2220
	5.1		Travel speed, laden/unladen		8 / 12	8 / 12
5.2	Lift speed, laden/unladen				0,28 / 0,35	0,28 / 0,35
	5.3		Lowering speed, laden/unladen		0,35 / 0,35	0,35 / 0,35
5.4	Reach speed, laden/unladen				0,12	0,12
	5.7		Gradeability, laden/unladen %		6 / 9	6 / 9
5.8	Max. gradeability, laden/unladen %				9 / 11	9 / 11
	5.9		Acceleration time, laden/unladen		5,3 / 4,5	5,3 / 4,5
5.10	Service brake				-	-
	6.1		Drive motor rating S2 60 min. AC		5	5
6.2	Lift motor rating at S3 15% AC				14	14
	6.3		Battery acc. to DIN 43531/35/36 A, B, C, no		DIN 43531 EN/IEC 602542	DIN 43531 EN/IEC 602542
6.4	Battery voltage/nominal capacity				48 / 775	48 / 775
	6.5		Battery weight		1200	1200
8.1	Type of controller				MOS-FET AC	MOS-FET AC
	8.2		Operating pressure for attachments		160	160
8.3	Oil flow for attachments				20	20
	8.4		Noise level acc. To EN12053 at operator's ear		69	69

## EFSM-S

Genkinger electric multidirectional heavy duty reach trucks can transport goods in an especially space-saving manner in narrow aisles, due to their electronic all-wheel steering. Due to their high load capacities, they are also perfectly suitable for the transport of heavy long loads.

Their clear superiority compared to conventional four-way lift trucks becomes apparent by four different drive programs which are available to the driver. These comprise standard driving, crosswise and lengthwise driving, including turning on the spot. Quickest possible changes of the driving direction are made possible by the 360-degree steering mechanism and a minimum turning radius.

An ergonomic operator's position with upholstered comfort driver seat, driving with foot pedal and a height adjustable footrest provide for comfort and excellent visibility conditions. The steering wheel with well-designed handle and a joystick for sensitive lifting and lowering as well as mast reach and driving direction changeover ensure a simple and intuitive operation.

The productivity is increased by additional assistance systems:

- The Genkinger Curve Control is a driving speed reduction while driving along a curve. It depends on the steering angle and provides for increased safety.

- The creep speed switch allows precision work in the warehouse.

High economic efficiency consistent with outstanding performance:

- Reach mast principle for lower aisle width requirements.
- Energy recuperation while braking provides for a long operating time.

Our strength is reflected in the different and manifold optional features which allow a need-based customization of the Genkinger reach truck to each individual case.



from 3,0 t to...

Id.-Nr.: GH52602843  
We reserve the right to make technical changes.  
Power ratings are approximate values without any obligation.

**Genkinger GmbH**

Albstraße 49, D-72525 Münsingen  
Telefon: +49 (0) 7381 186-0  
Fax: +49 (0) 7381 186-44  
[www.genkinger.de](http://www.genkinger.de)  
[info@genkinger.de](mailto:info@genkinger.de)

