



How We Grow Our Orchids



Dave Miller



















A large, irregular splash of teal and dark green ink on a white background, with smaller droplets and splatters around the main shape.

Stands & Tables

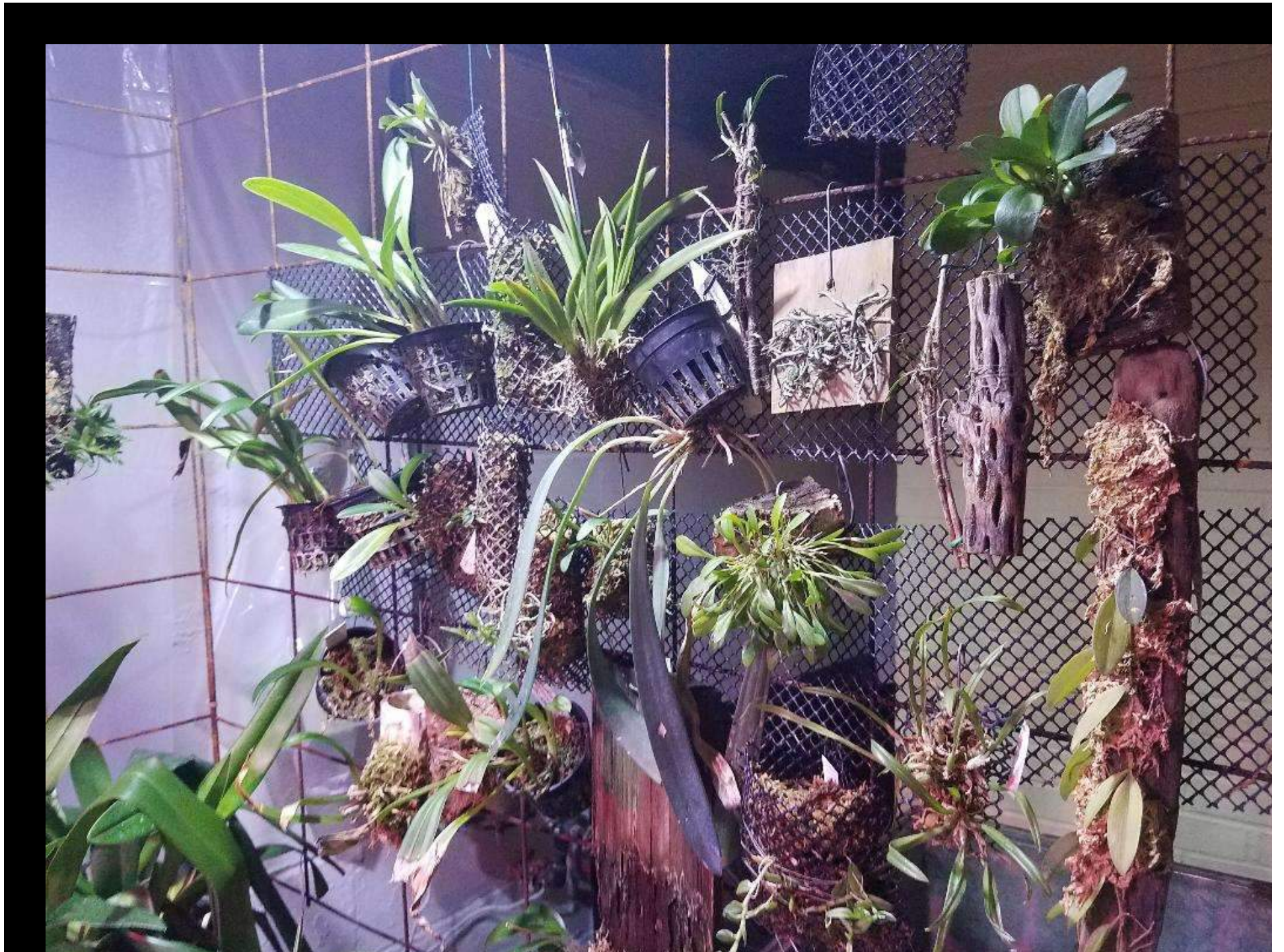






















A large, irregular teal watercolor splash or ink blot is centered on a white background. The splash has a dark teal center that fades into a lighter teal at the edges, with some darker, more saturated areas. There are several small, dark teal droplets and splatters scattered around the main splash, particularly towards the top and bottom edges. The overall effect is artistic and organic.

Greenhouses















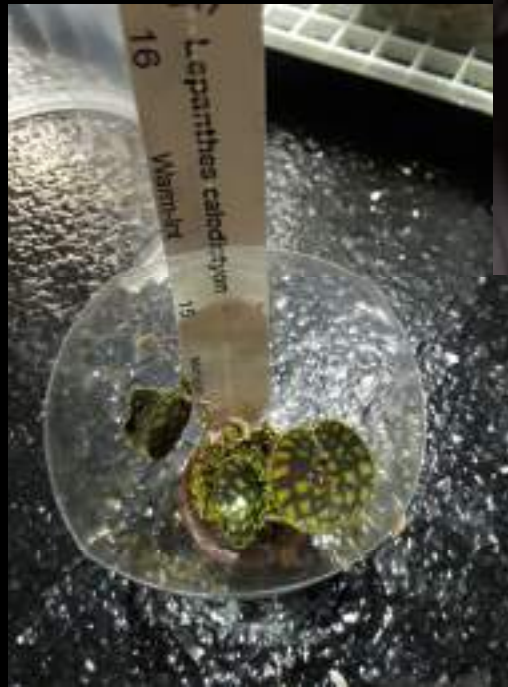












A large, irregular teal-colored ink splatter or watercolor blotch is centered on a white background. The splatter has a dark, almost black center that fades into a lighter teal at the edges. There are numerous small, dark specks and droplets scattered around the main blotch, giving it a textured, organic appearance.

Work Areas & Facilities













Time for Joe ...
Then Off you Go !!!



Any More
Questions ?