



The Fuelpod versatile DEF tank range is a stationary type fluid storage tank.

Available Sizes

- ✓ FPV-DEF-3000L/835G
- ✓ FPV-DEF-5000L/1394G
- ✓ FPV-DEF-10000L/2800G
- ✓ FPV-DEF-20000L/5812G



fuelpod
versatile DEF

DyMac Global Head Office | Kitsmead Lane | Longcross | Chertsey | Surrey UK | KT16 0EF

+44 300 303 3353 | sales@dymacglobal.com | www.dymacglobal.com

Company Reg. 10445307



fuelpod

versatile DEF

Enhanced Design Features

Maintenance & Environment

This class leading range has a steel outer tank shell, primed and painted with a two coat epoxy paint. It has a Stainless Steel internal tank with hatch lid. It has 2 inch and 3 inch ports, the tank range has been designed to allow the future fitting of 40mm of insulation between the two tank walls to assist with temperature control as an option.

Safety and Security

The tank range comes with conveniently positioned lifting lugs positioned on the roof for ease of maneuverability. There are Forklift access points for safe lifting and movement and removable side panels for remote pipe connections. Optional level gauge and sump sensor is available on the FPV-DEF range.

Dispensing & Accessibility

The tank range comes complete with large front door access, with high quality heavy duty container locking bars Stainless steel suction and fill line piping. 2 inch Stainless Steel dry-break Adaptor fitted to the fill line.

A two inch Stainless Steel Y-Strainer fitted to suction line Pump (Dependent on number of dispensers) Stainless Steel Overfill Valve Stainless Steel Anti-syphon Valve and grated mesh floor in pump bay section along with a Manway on the top to access internal Stainless Steel tank.



Design Innovation

Take a look inside

Our Standard FPV-DEF tank range in size from 3,000L to 20,000L (safe fill levels). Although AdBlue is a clear, non-toxic and safe to handle liquid solution, it is highly corrosive, so it must be stored and transported carefully. Our main range of storage solutions take this risk into account and are manufactured with a 40 mm insulated Stainless Steel internal tank to ensure a consistent internal temperature and to prevent against contamination with other products and the environment.

Each of the tanks in the range can be fitted with your choice of pumping and metering solutions and are manufactured and fitted out with the highest quality components and systems.



Superior Features



The internal equipment compartment area has Flow forge floor for spillage protection.



The tank comes with a stainless steel 3" Camlock fill point and stainless steel suction pipe.



Stainless Steel pipes and fittings comes with manway cover for ease of access for maintenance.

Optional Accessories



On-loading and off loading connection pipes.



Over head Pylon for hose and nozzle connection.



Stainless steel Suction pipe.

fuelpod

versatile DEF

Model (FPV-DEF-3000L/835G)

The Fuelpod Versatile AdBlue/DEF tank is 110% Bunded Tank within a Tank design. It is durable and long lasting.

Fully hydrostatically tested to ensure it will hold the diesel engine fluid in the event of a breach in the primary tank.



Specifications

	Metric	US	Imperial
Capacity	3160 Litres	835 Gallons	695 Gallons
Length	2572 mm	101 4/16"	101 4/16"
Width	1129 mm	44 7/16"	44 7/16"
Height	2566 mm	101"	101"
External Tank Material (Q235)	4 mm	5/32"	5/32"
Inner Tank Material (SS304)	3 mm	1/8"	1/8"
Mass (empty)	1798 kg	3963 lbs, 15oz	3963 lbs, 15oz
Mass (full)	4499 kg	9918 lbs, 10oz	9918 lbs, 10oz

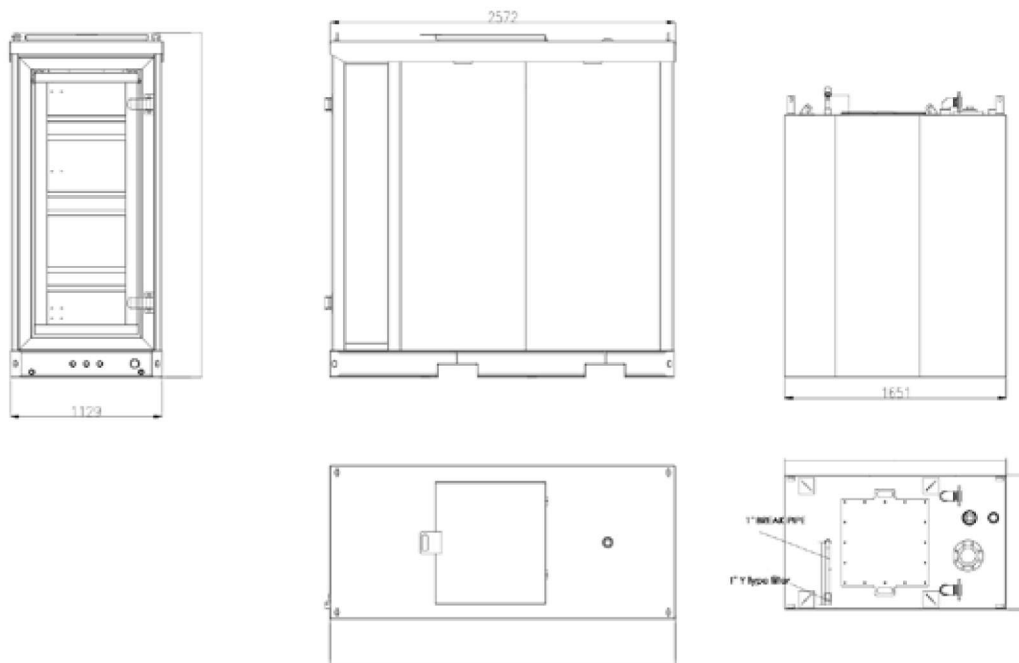
Approvals and Certifications

UK & Europe

- ✓ UL142
- ✓ ULCS601-14
- ✓ PPG2 & PPG26
- ✓ Lifting when Empty
- ✓ Vibration Tested
- ✓ BS799

USA & Canada

- ✓ UL142 Compliant Design
- ✓ ULCS601-14
- ✓ Lifting when Empty
- ✓ PPG2 & PPG26
- ✓ ULC S601 Complaint Design



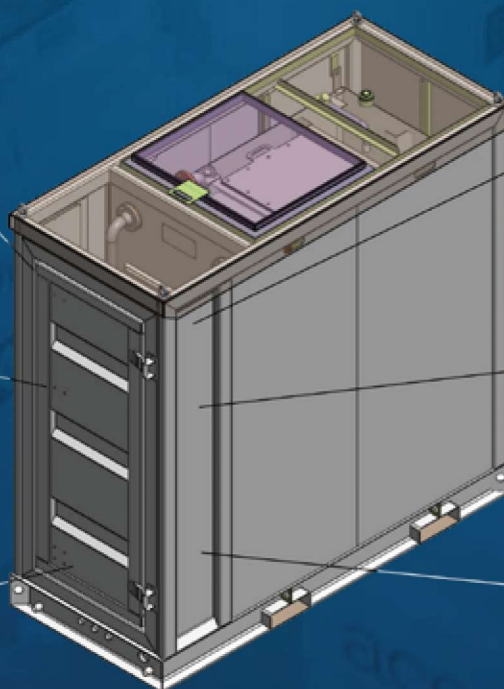
DISPENSING NOZZLE VARIATIONS



HOSE LENGTH VARIATIONS



UP TO 10M RETRACTABLE HOSE REELS



(FMS) FUEL MANAGEMENT SYSTEM



PUMP KIT WITH CABINET



OPTIONAL FUEL MANAGEMENT SYSTEMS AVAILABLE

fuelpod

versatile DEF

Model (FPV-DEF-5000L/1394G)

The Fuelpod Versatile AdBlue/DEF tank is 110% Bunded Tank within a Tank design. It is durable and long lasting.

Fully hydrostatically tested to ensure it will hold the diesel engine fluid in the event of a breach in the primary tank.



Specifications

	Metric	US	Imperial
Capacity	5275 Litres	1394 Gallons	1160 Gallons
Length	4053 mm	159 9/16"	159 9/16"
Width	1139 mm	44 13/16"	44 13/16"
Height	2548 mm	100 5/16"	100 5/16"
External Tank Material (Q235)	4 mm	5/32"	5/32"
Inner Tank Material (SS304)	3 mm	1/8"	1/8"
Mass (empty)	2380 kg	5247 lbs, 0oz	5247 lbs, 0oz
Mass (full)	6890 kg	15189 lbs, 14oz	15189 lbs, 14oz

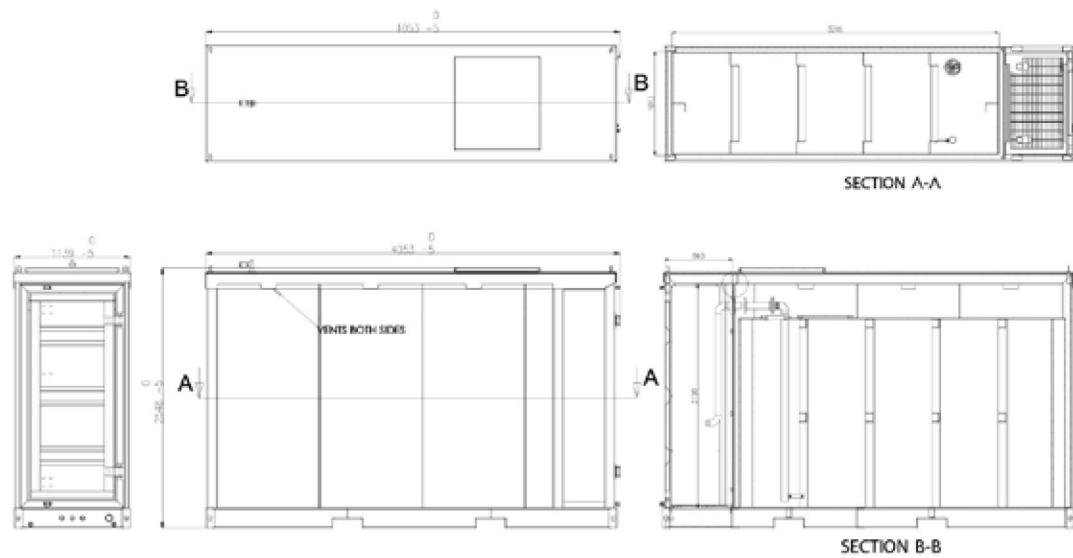
Approvals and Certifications

UK & Europe

- ✓ UL142
- ✓ ULCS601-14
- ✓ PPG2 & PPG26
- ✓ Lifting when Empty
- ✓ Vibration Tested
- ✓ BS799

USA & Canada

- ✓ UL142 Compliant Design
- ✓ ULCS601-14
- ✓ Lifting when Empty
- ✓ PPG2 & PPG26
- ✓ ULC S601 Complaint Design



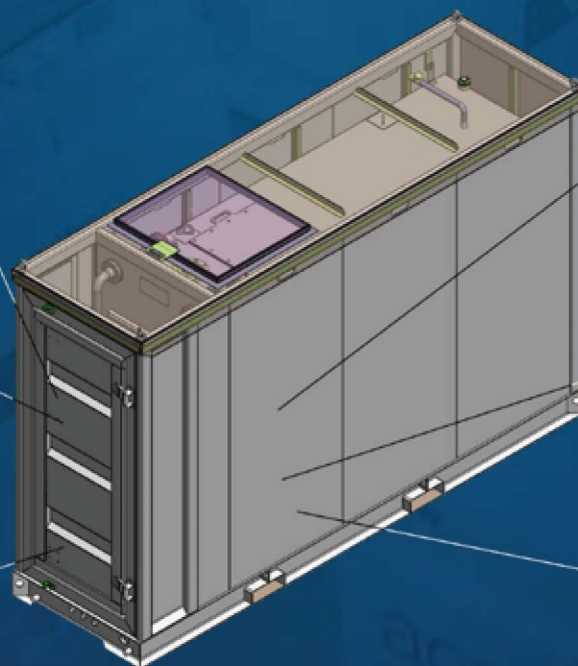
DISPENSING NOZZLE VARIATIONS



HOSE LENGTH VARIATIONS



UP TO 10M RETRACTABLE HOSE REELS



(FMS) FUEL MANAGEMENT SYSTEM



PUMP KIT WITH CABINET



OPTIONAL FUEL MANAGEMENT SYSTEMS AVAILABLE

fuelpod

versatile DEF

Model (FPV-DEF-10000L/2800G)

The Fuelpod Versatile AdBlue/DEF tank is 110% Bunded Tank within a Tank design. It is durable and long lasting.

Fully hydrostatically tested to ensure it will hold the diesel engine fluid in the event of a breach in the primary tank.



Specifications

	Metric	US	Imperial
Capacity	10600 Litres	2800 Gallons	2332 Gallons
Length	3960 mm	155 14/16"	155 14/16"
Width	2266 mm	89 3/16"	89 3/16"
Height	2504 mm	98 9/16"	98 9/16"
External Tank Material (Q235)	4 mm	5/32"	5/32"
Inner Tank Material (SS304)	3 mm	1/8"	1/8"
Mass (empty)	2900 kg	6393 lbs, 6oz	6393 lbs, 6oz
Mass (full)	11963 kg	26373 lbs, 14oz	26373 lbs, 14oz

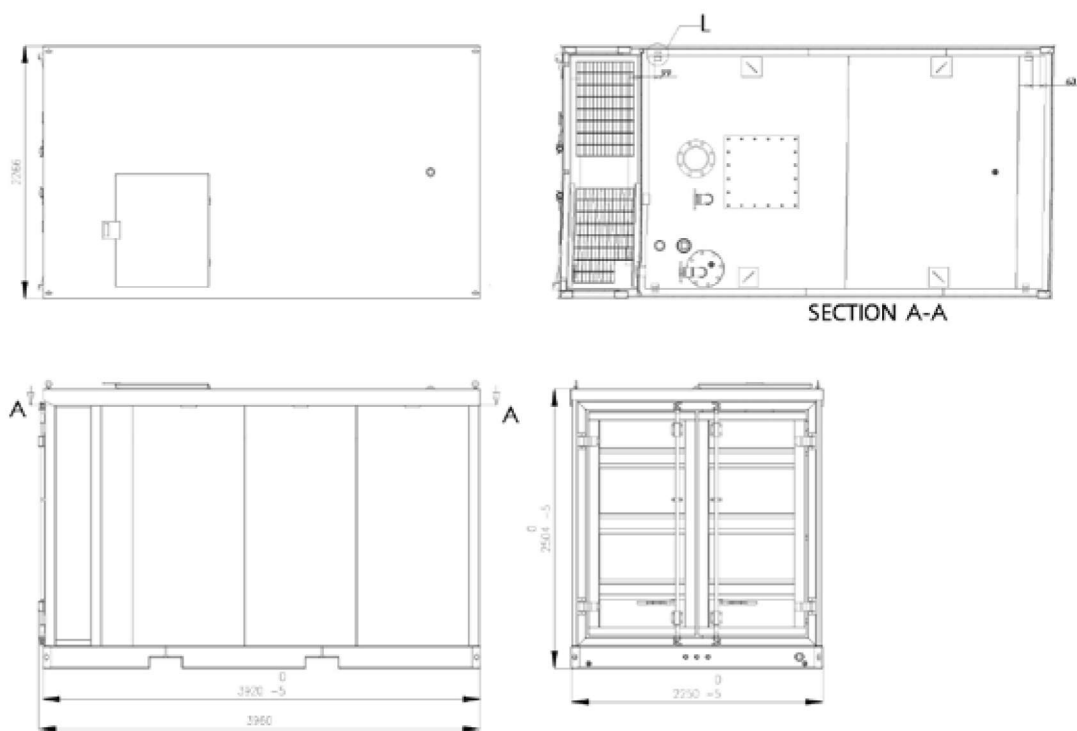
Approvals and Certifications

UK & Europe

- ✓ UL142
- ✓ ULCS601-14
- ✓ PPG2 & PPG26
- ✓ Lifting when Empty
- ✓ Vibration Tested
- ✓ BS799

USA & Canada

- ✓ UL142 Compliant Design
- ✓ ULCS601-14
- ✓ Lifting when Empty
- ✓ PPG2 & PPG26
- ✓ ULC S601 Complaint Design



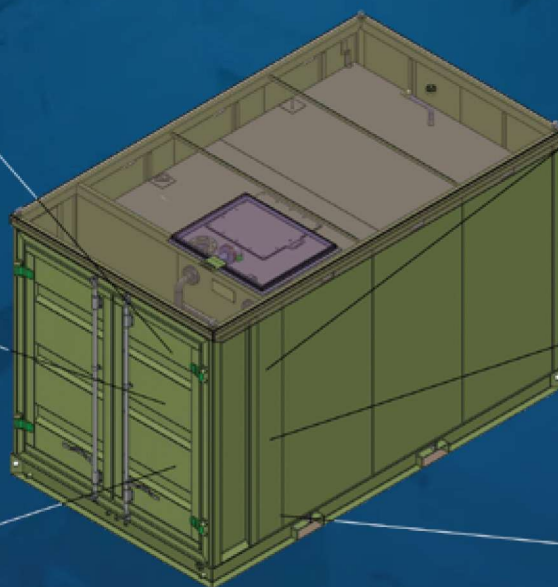
**DISPENSING NOZZLE
VARIATIONS**



**HOSE LENGTH
VARIATIONS**



**UP TO 10M
RETRACTABLE HOSE REELS**



**(FMS) FUEL
MANAGEMENT SYSTEM**



**PUMP KIT WITH
CABINET**



**OPTIONAL FUEL
MANAGEMENT SYSTEMS
AVAILABLE**

fuelpod

versatile DEF

Model (FPV-DEF-20000L/5812G)

The Fuelpod Versatile AdBlue/DEF tank is 110% Bunded Tank within a Tank design. It is durable and long lasting.

Fully hydrostatically tested to ensure it will hold the diesel engine fluid in the event of a breach in the primary tank.



Specifications

	Metric	US	Imperial
Capacity	22000 Litres	5812 Gallons	4839 Gallons
Length	6960 mm	274"	274"
Width	2274 mm	89 8/16"	89 8/16"
Height	2504 mm	98 9/16"	98 9/16"
External Tank Material (Q235)	4 mm	5/32"	5/32"
Inner Tank Material (SS304)	3 mm	1/8"	1/8"
Mass (empty)	5100 kg	11243 lbs, 9oz	11243 lbs, 9oz
Mass (full)	23910 kg	52712 lbs, 8oz	52712 lbs, 8oz

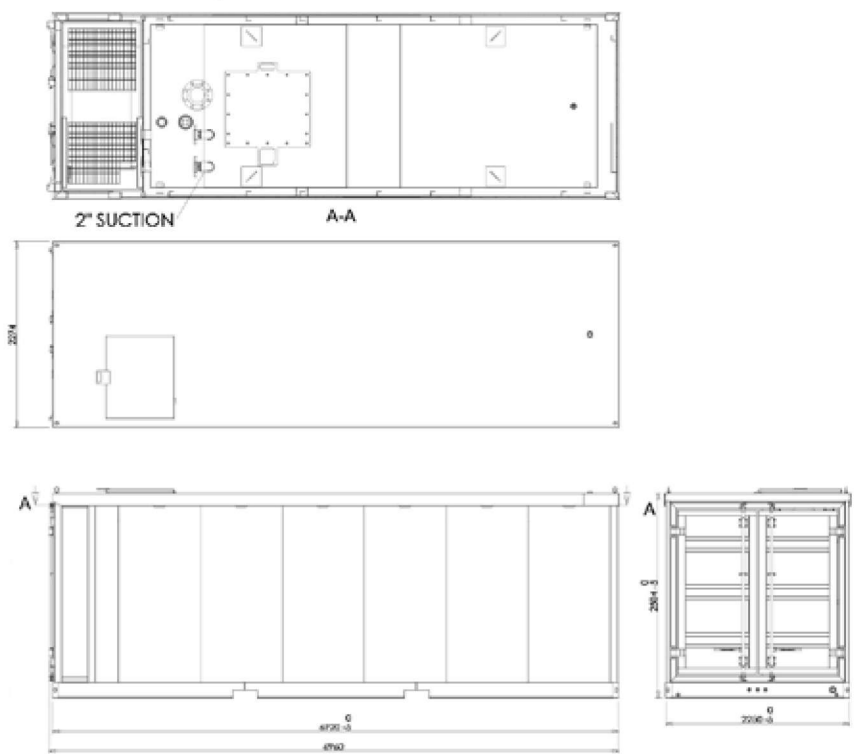
Approvals and Certifications

UK & Europe

- ✓ UL142
- ✓ ULCS601-14
- ✓ PPG2 & PPG26
- ✓ Lifting when Empty
- ✓ Vibration Tested
- ✓ BS799

USA & Canada

- ✓ UL142 Compliant Design
- ✓ ULCS601-14
- ✓ Lifting when Empty
- ✓ PPG2 & PPG26
- ✓ ULC S601 Complaint Design



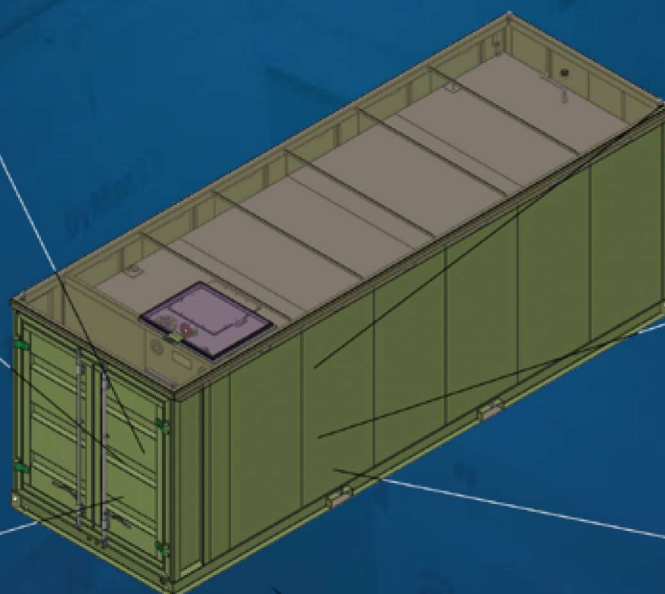
DISPENSING NOZZLE VARIATIONS



HOSE LENGTH VARIATIONS



**UP TO 10M
RETRACTABLE HOSE REELS**



**(FMS) FUEL
MANAGEMENT SYSTEM**



**PUMP KIT WITH
CABINET**



**OPTIONAL FUEL
MANAGEMENT SYSTEMS
AVAILABLE**



Fuelling Your Progress

DyMac Global Head Office
E: sales@dymacglobal.com
T: +44 300 303 3353
Kitsmead Lane
Longcross, Chertsey
Surrey KT16 0EF
United Kingdom

DyMac Global India
E: india@dymacglobal.com
T: +91 8243556957
Pam Arcade
3rd floor, Kottara
Ashok Nagar
Mangalore - 575006
India

DyMac Canada
E: canada@dymacglobal.com
T: +1 905 564 3654
Mississauga
Toronto
Canada

DyMac Europe / Ireland
E: europe@dymacglobal.com
T: +353 1 442 0516
Unit 3B, Canal Bank
Hume Avenue
Park West Ind EST
Dublin
Ireland

www.dymacglobal.com