

Southeast Culvert is a corrugated steel pipe and corrugated high density polyethylene pipe manufacturer located in Winder, Georgia. We specialize in large diameter pipe systems and custom built pipe fabrications.

Corrugated steel is gaining wider appeal for special uses such as storm shelters because the aluminized steel used in these structures is both long lasting, structurally sound, and relatively inexpensive compared to other product options.



Southeast Culvert shelters exceed the standards set by FEMA 320 and FEMA 361.

Southeast Culvert storm shelters can be built with an attached steel door for installations in the side of an embankment, or with vertical access risers.

A variety of access stubouts can be attached to the shelter to allow the owner to install ventilation systems or even electrical systems.

A team of engineers are on hand to assist you with any technical questions you have and to create proposal drawings to make sure the finished product will meet your expectations.



Shelter sizes can be as large as twelve foot diameter and as long as forty feet!



**Southeast Culvert Inc**

Tel: 770-963-5041

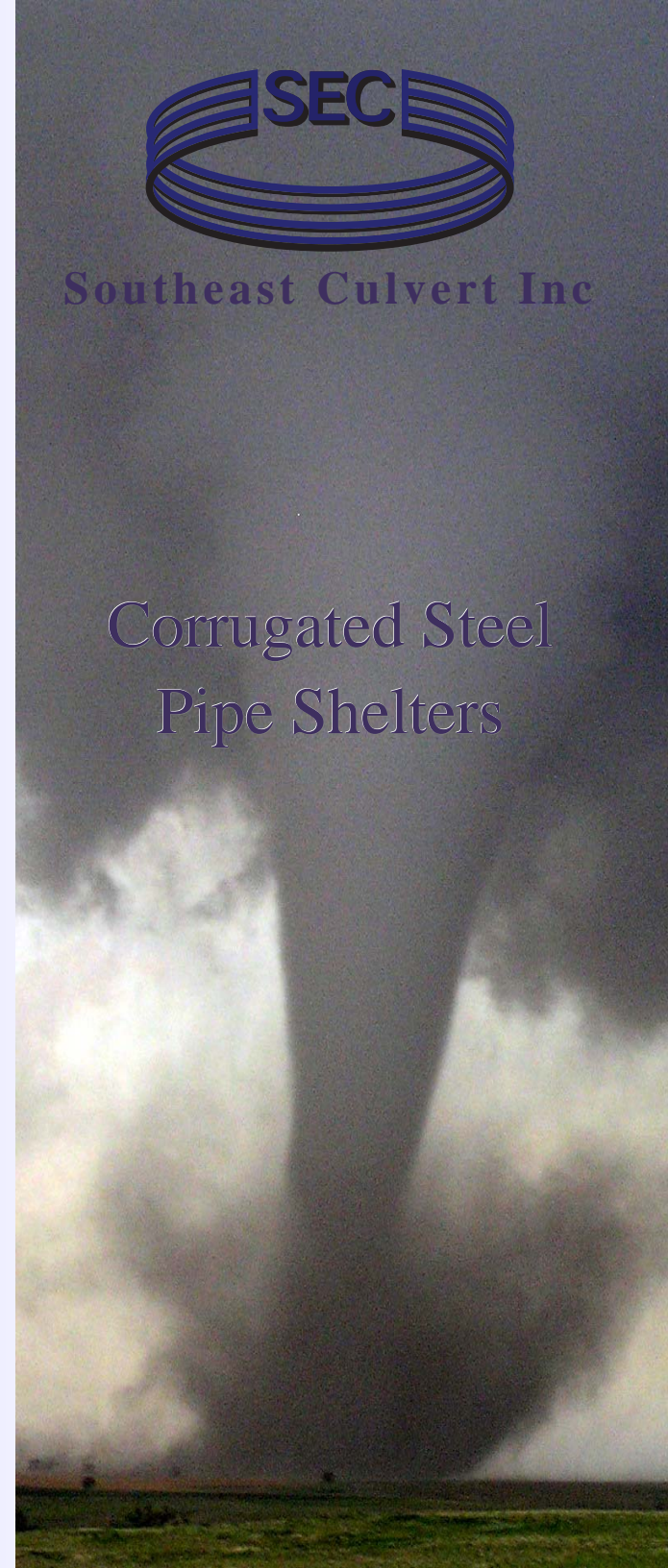
1094 Bankhead Highway,

Winder Georgia, 30680



**Southeast Culvert Inc**

Corrugated Steel  
Pipe Shelters





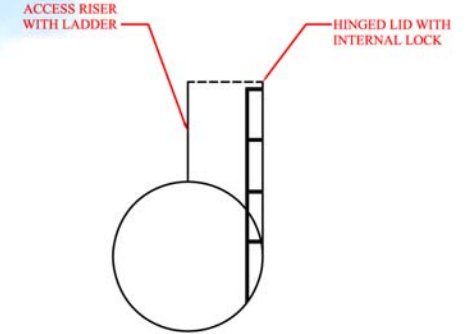
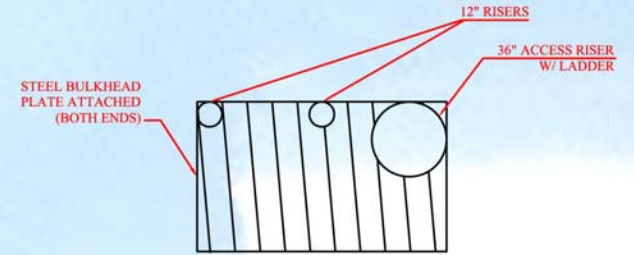
We all want to know that our family is safe, regardless of extreme circumstances. People living in tornado or hurricane prone areas may be wise to have emergency shelters. According to FEMA's website, the organization "strongly encourages homeowners and communities to build safe rooms..."  
Do you feel prepared?



These structures can be easily designed to accommodate any number of people. They can also be customized to include bench seating, shelves, and anything else you might need.



Endless configurations available. Structure can be custom designed by the end user to meet their needs!



SIDE VIEW DOORWAY ENTRANCE OPTION

