

Angles And Distance



Agenda

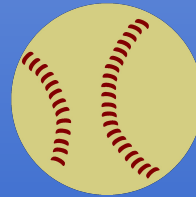
- Good angles
- Distance and primary viewing angle
- Visual indicators at 1B
- Plays at 1B
- Tag Plays
- Views from different angles
- Questions

**WHAT IS A GOOD
ANGLE?**

What is a good angle?

- Where you keep all four elements in front of you

– Ball



– Base



– Offense



– Defense



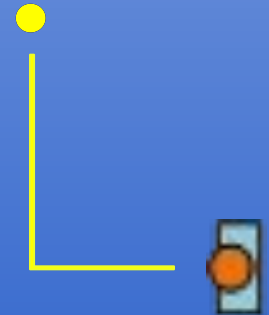
More than just having these elements in front of you

- Must be able to see interaction between these four elements
- Force Outs
 - Defense controlling ball
 - Defense contacting base
 - Offense contacting base
- Tag Plays
 - Defense contacting offense with ball
 - Defense maintaining control of ball
 - Offense contacting base

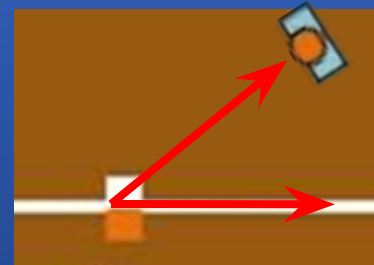
PRIMARY POSITIONING

Force outs and Plays at 1B

- 90 degrees from the throw



- No further than a 45° angle from the foul line at 1B



Tag Plays

- Primary Position:
 - 90 degrees to the path of the runner
 - Just short of the base they are trying to reach
- Secondary Position:
 - Move as necessary to get to the “keyhole” view
 - Avoid looking through either player’s back

DISTANCE AND PRIMARY VIEWING ANGLE

Viewing Angles

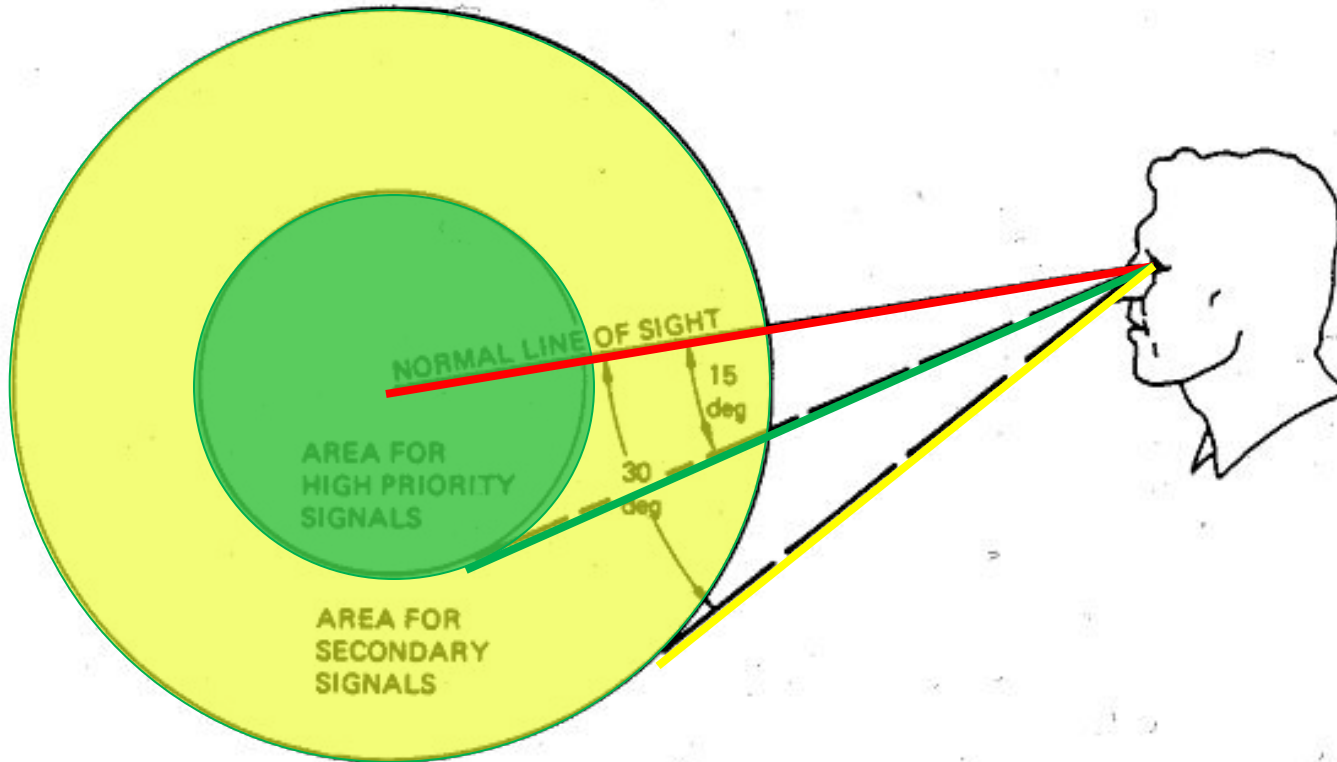
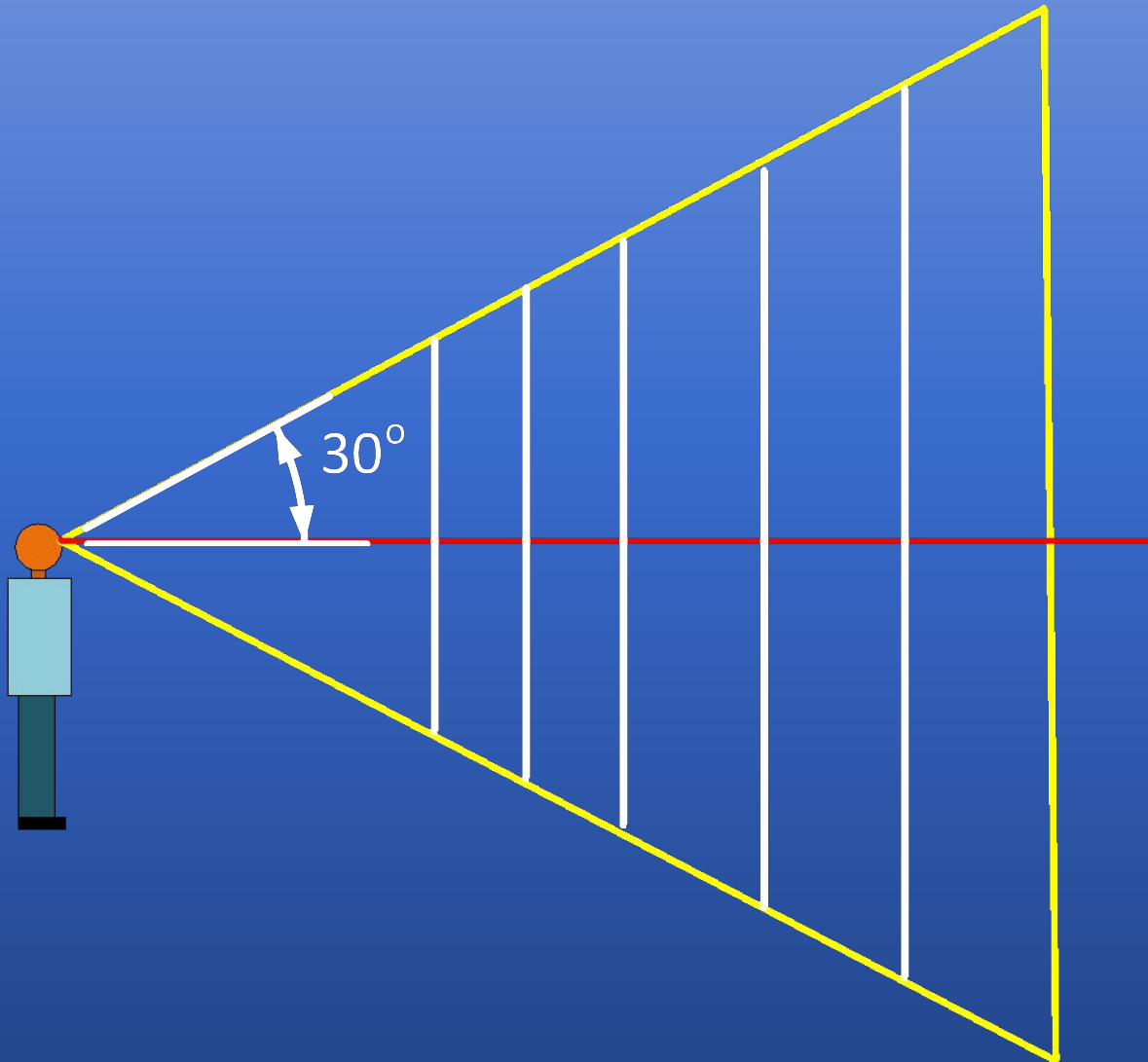


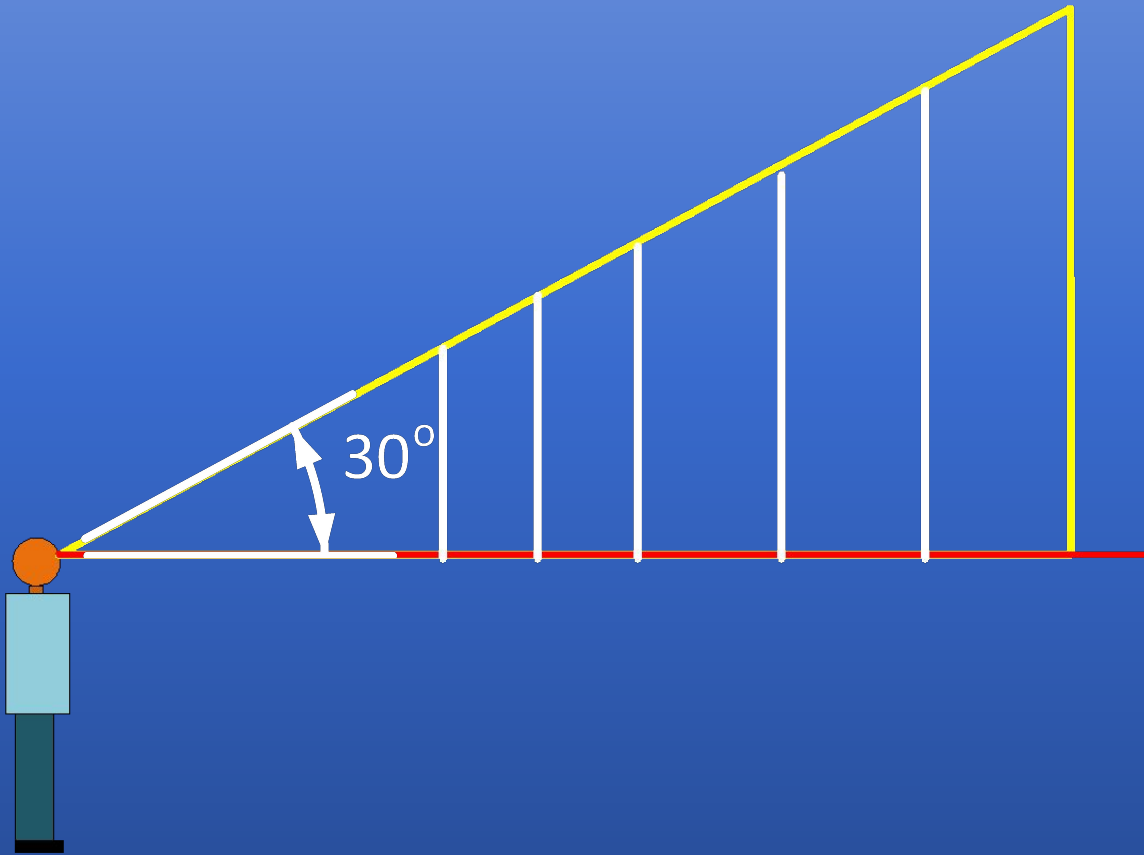
Figure 2.11. Recommended placement of visual alert and other high priority signals relative to the line of sight. (from DOT/FAA/RD-81/38,II)

Viewing Area From Line of Sight -Tag Plays



Distance	Priority Viewing Area
8 Feet	9' 3"
10 Feet	11' 6"
12 Feet	13' 10"
15 Feet	17' 3"
18 Feet	20' 9"
21 Feet	24' 3"

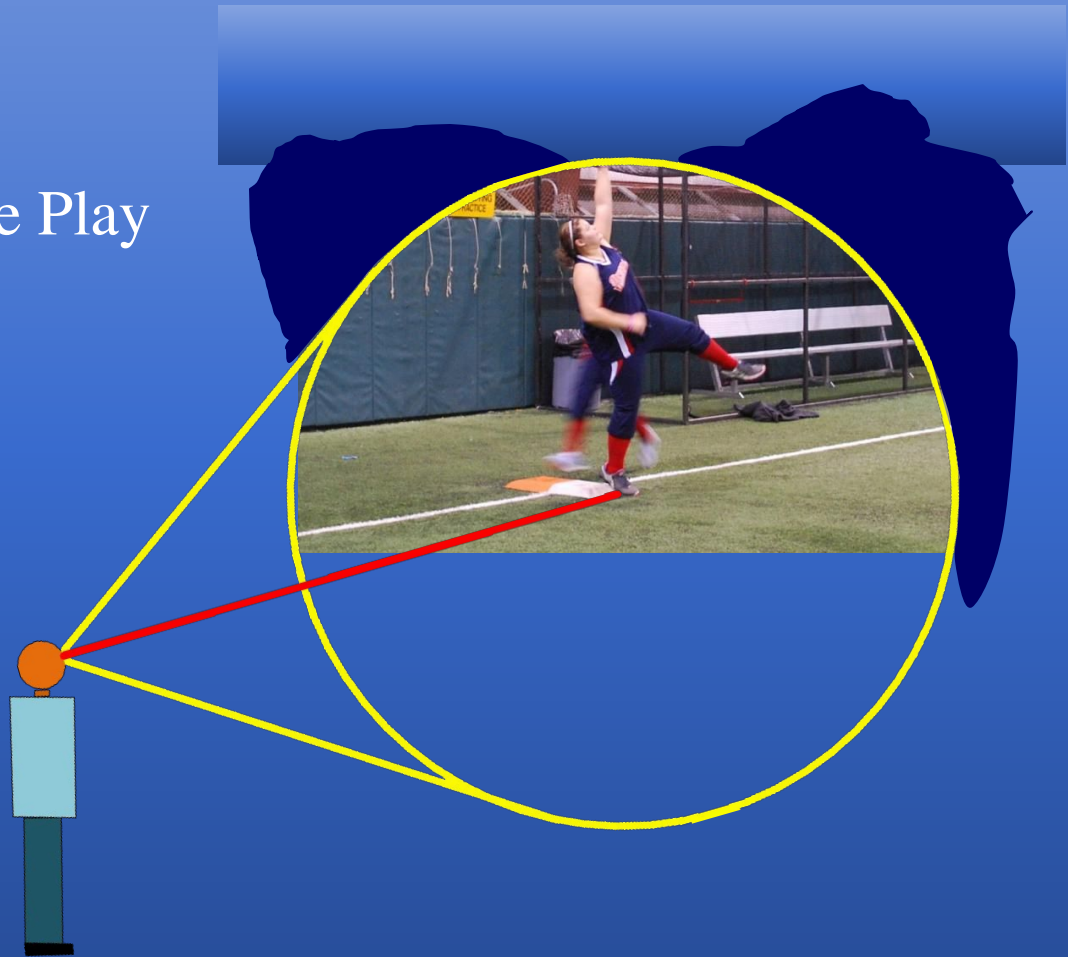
Viewing Area From Line of Sight - Force Plays



Distance	Priority Viewing Area
8 Feet	4' 7"
10 Feet	5' 9"
12 Feet	6' 11"
15 Feet	8' 7"
18 Feet	10' 4"
21 Feet	12' 1"

5' 5" Player-7' 8" Reach

12' From the Play



5' 5" Player-7' 8" Reach

15' From the Play



5' 5" Player-7' 8" Reach

18' From the Play



6' 2" Player-10' 1" Reach

12' From the Play



6' 2" Player-10' 1" Reach

15' From the Play



6' 2" Player-10' 1" Reach

18' From the Play

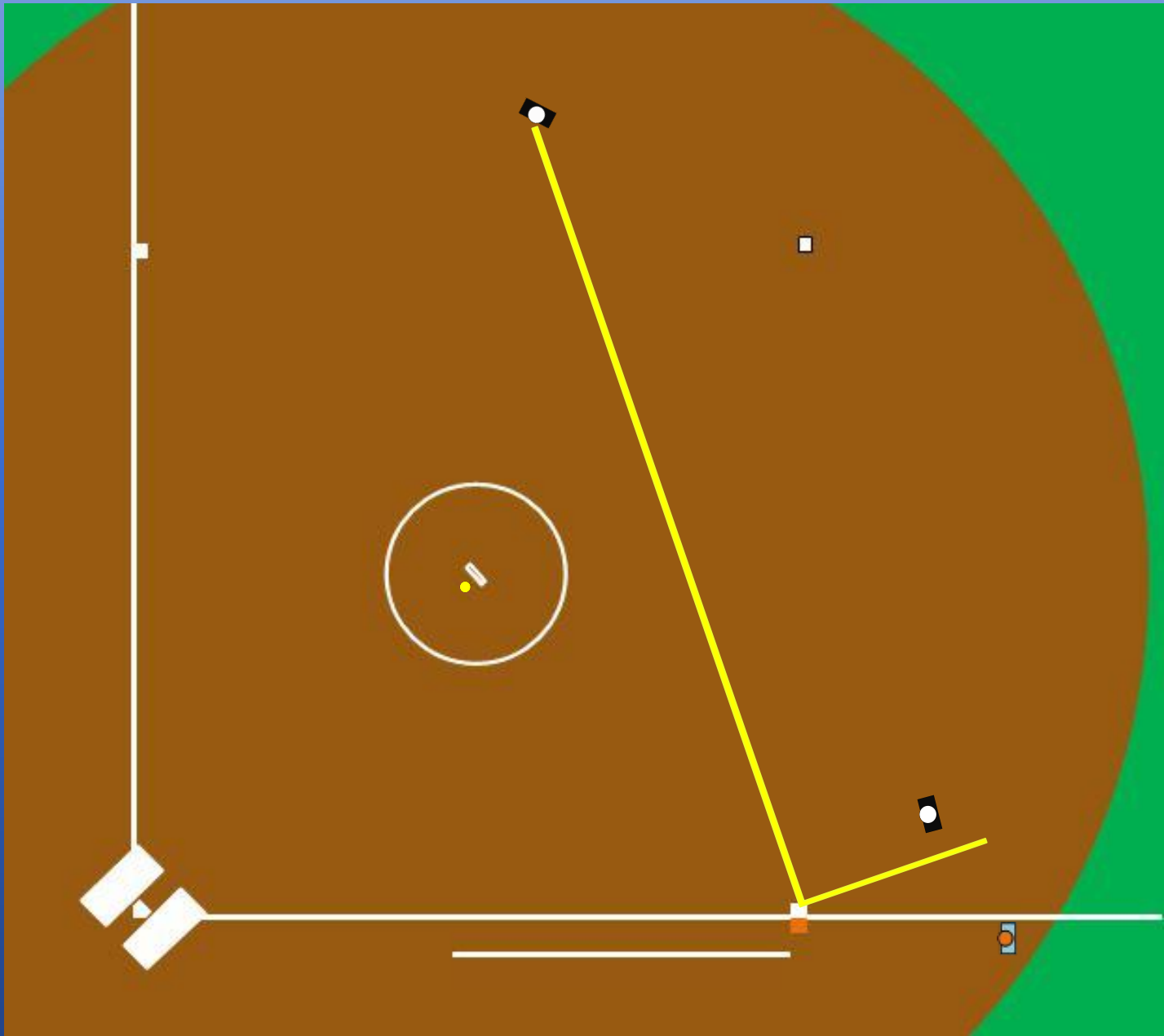


VISUAL INDICATORS FOR ALIGNMENT AT 1B

Helpful Hints for Proper Angle at 1B

- Obtaining the proper angle at 1B
 - As F3 sets up for a throw
 - Their shoulders will be 90 degrees to the throw

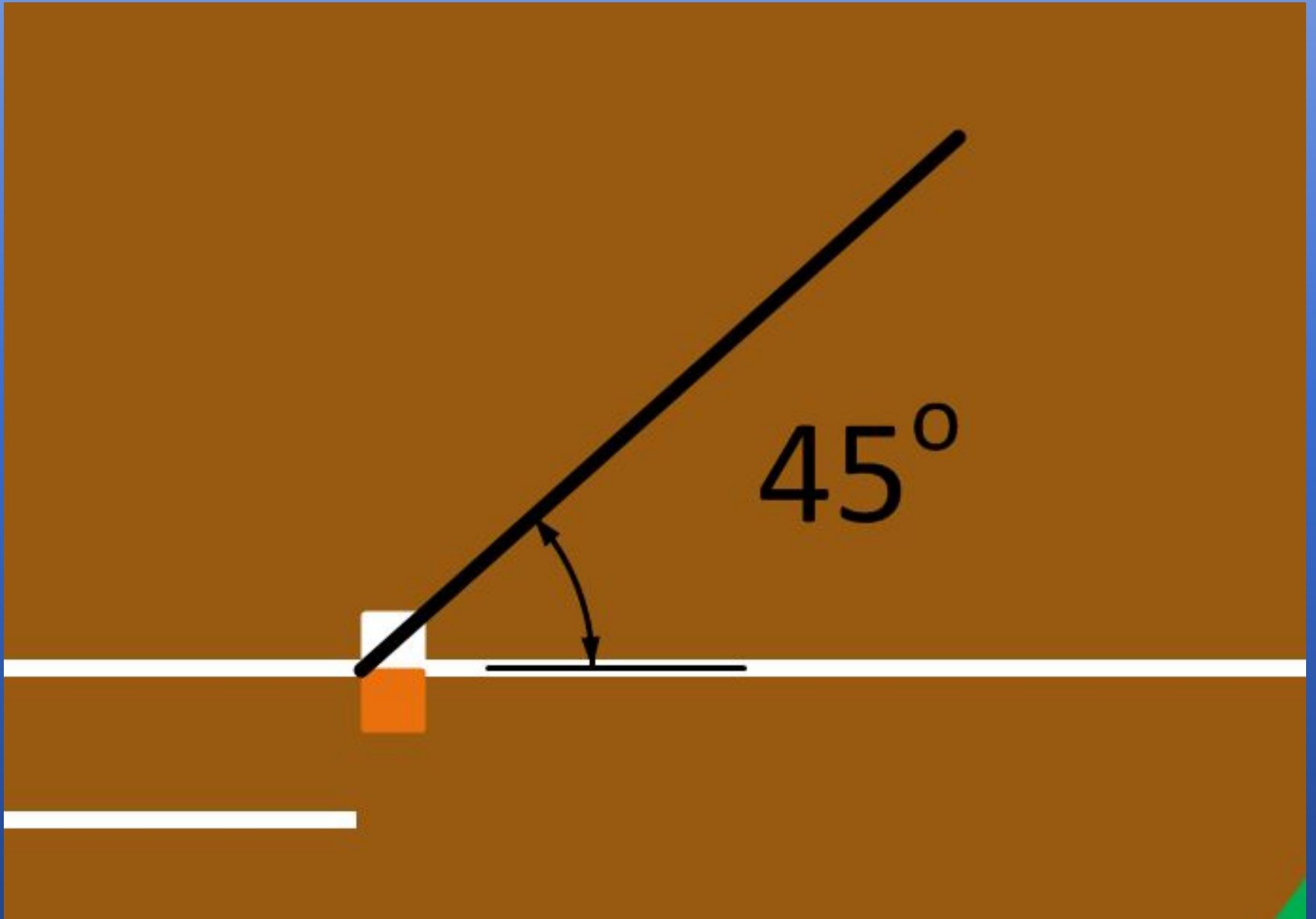
Visual to help Line up 90 degrees to the throw



Helpful Hints for Proper Angle at 1B

- What is a 45 degree angle from 1B line?
 - The front outside corner to the back inside corner of the white portion of 1B makes a 45 degree angle.

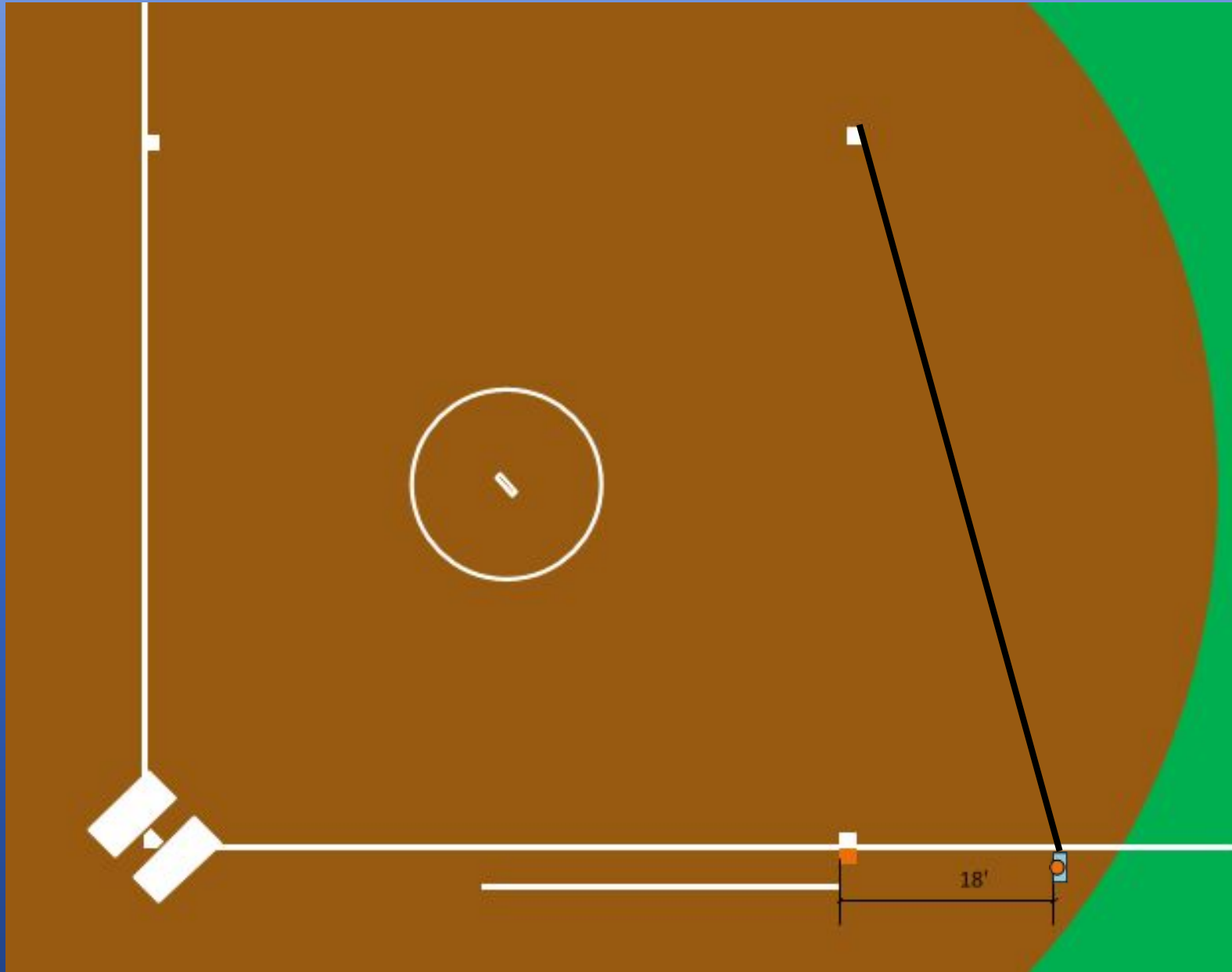
Visual of 45 degree angle at 1B



FAQ From Umpires

- How do I maintain proper distance on a play at 1B?
 - In 2 umpire Fast Pitch and 3 Umpire Systems
 - Starting at 18' from the base move in a line toward the back corner of 2B

Guideline to keep proper depth

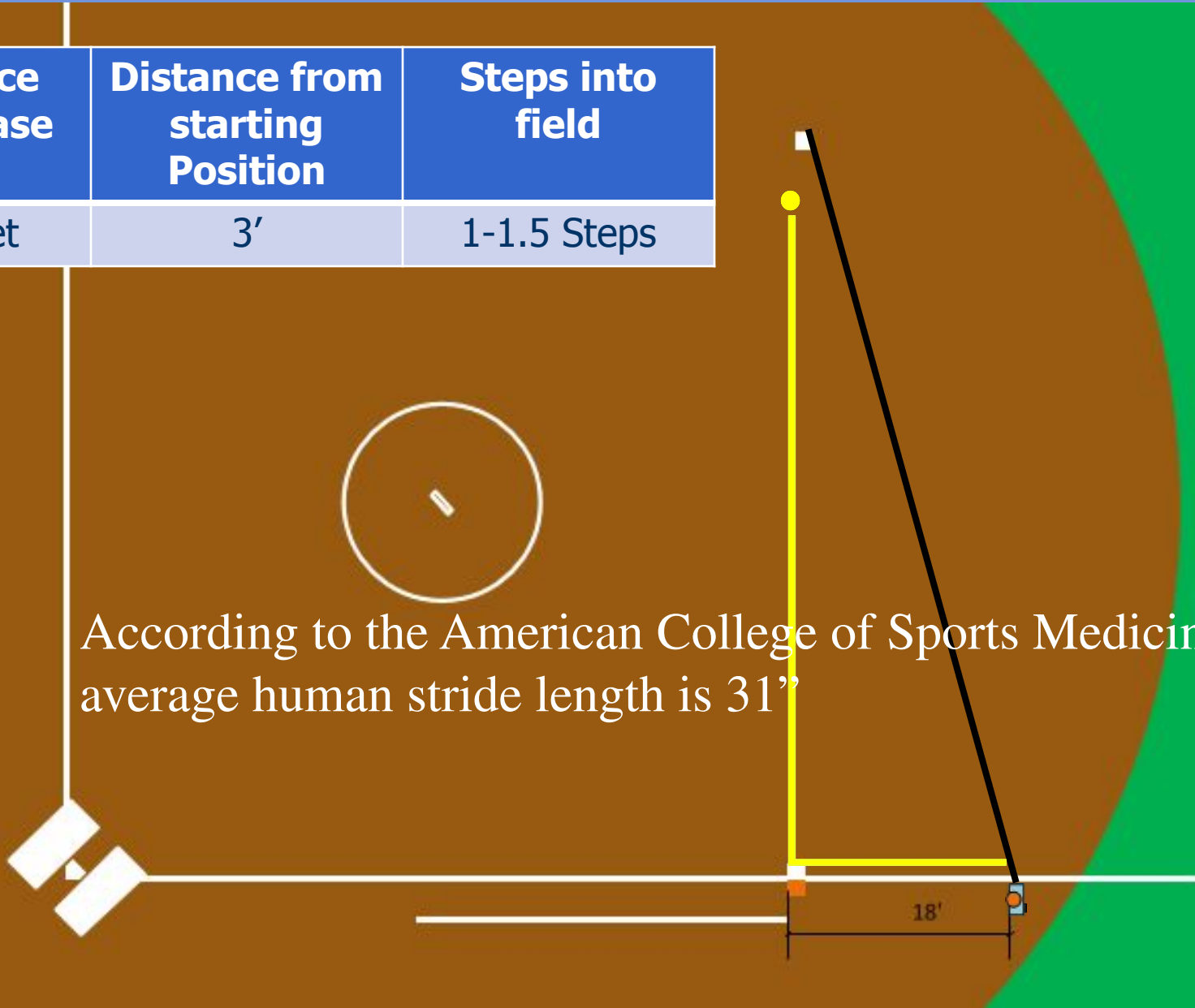


PLAYS AT 1B

Throw from 2B

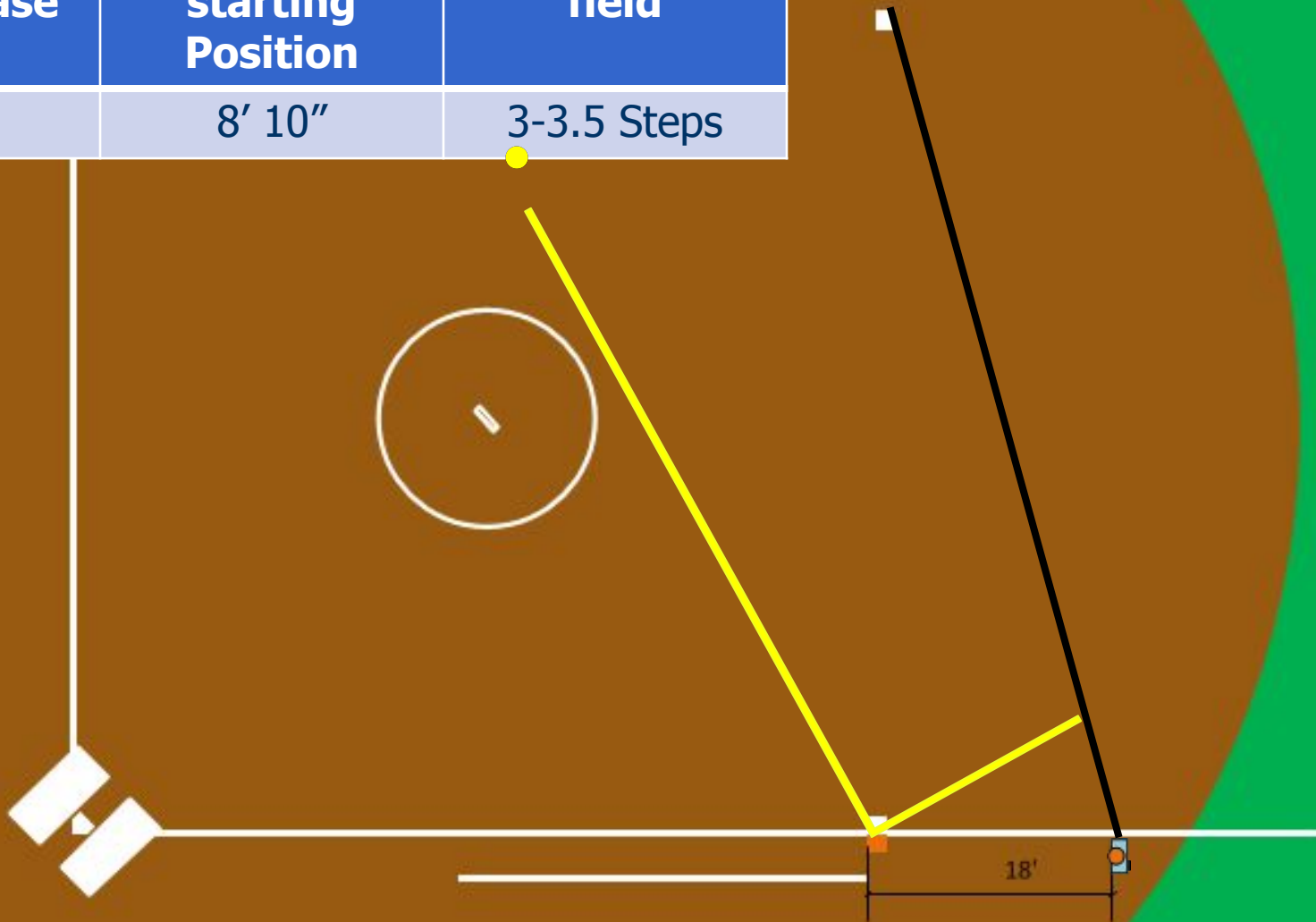
Distance from Base	Distance from starting Position	Steps into field
18 Feet	3'	1-1.5 Steps

According to the American College of Sports Medicine average human stride length is 31"



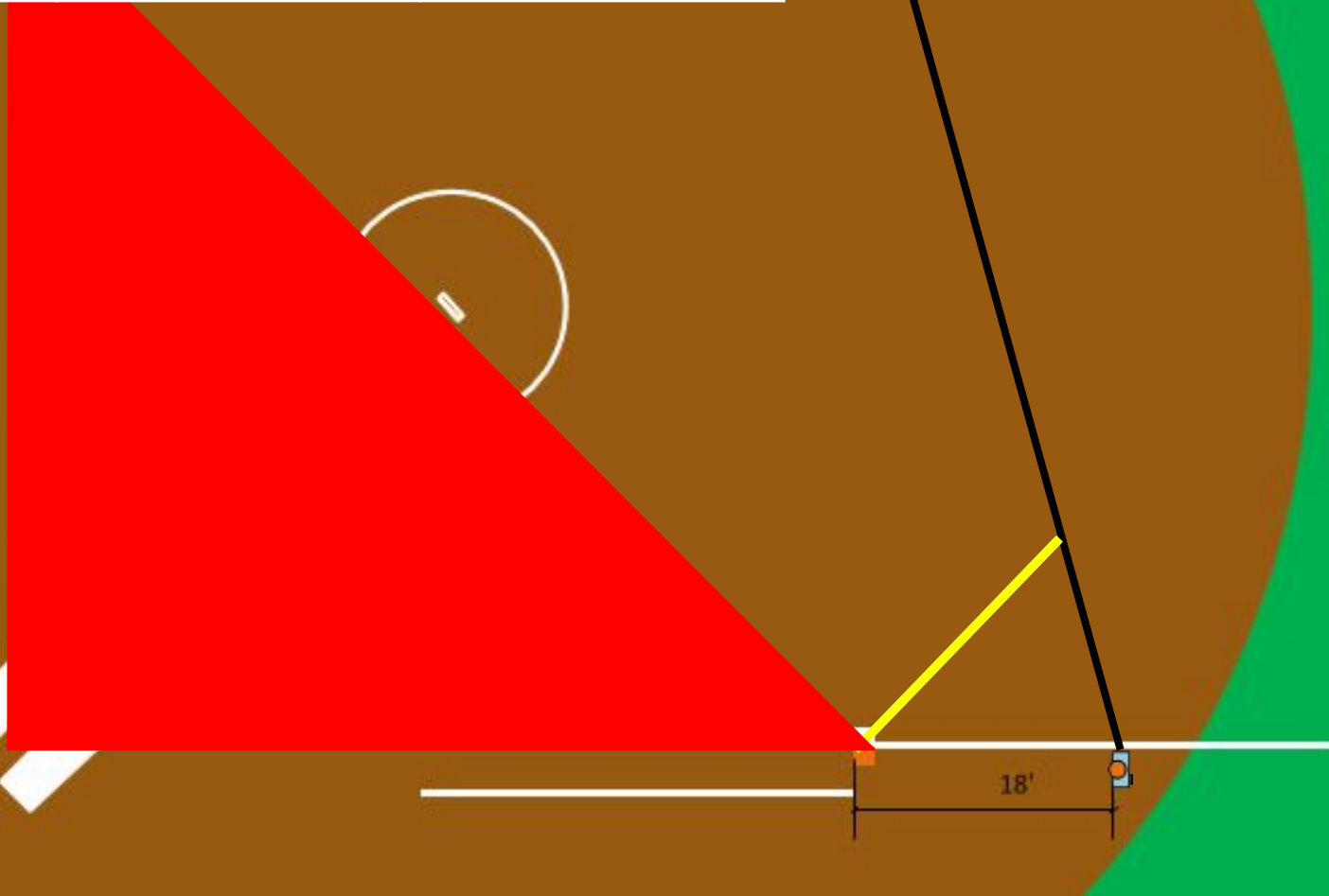
Throw from Short Stop Area

Distance from Base	Distance from starting Position	Steps into field
18'	8' 10"	3-3.5 Steps



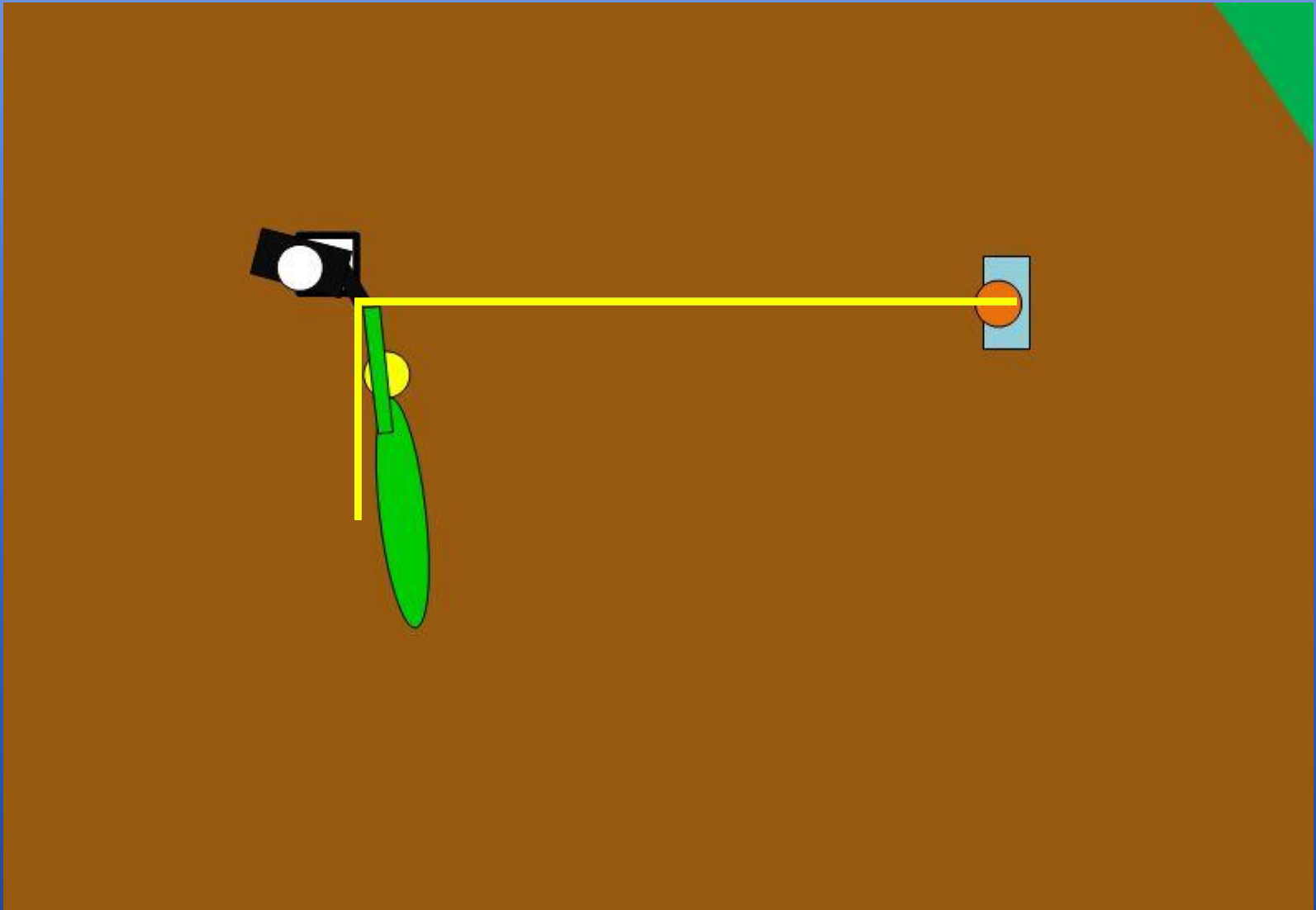
Throw From 3B Area

Distance from Base	Distance from starting Position	Steps into field
20'	15' 5"	6 Steps

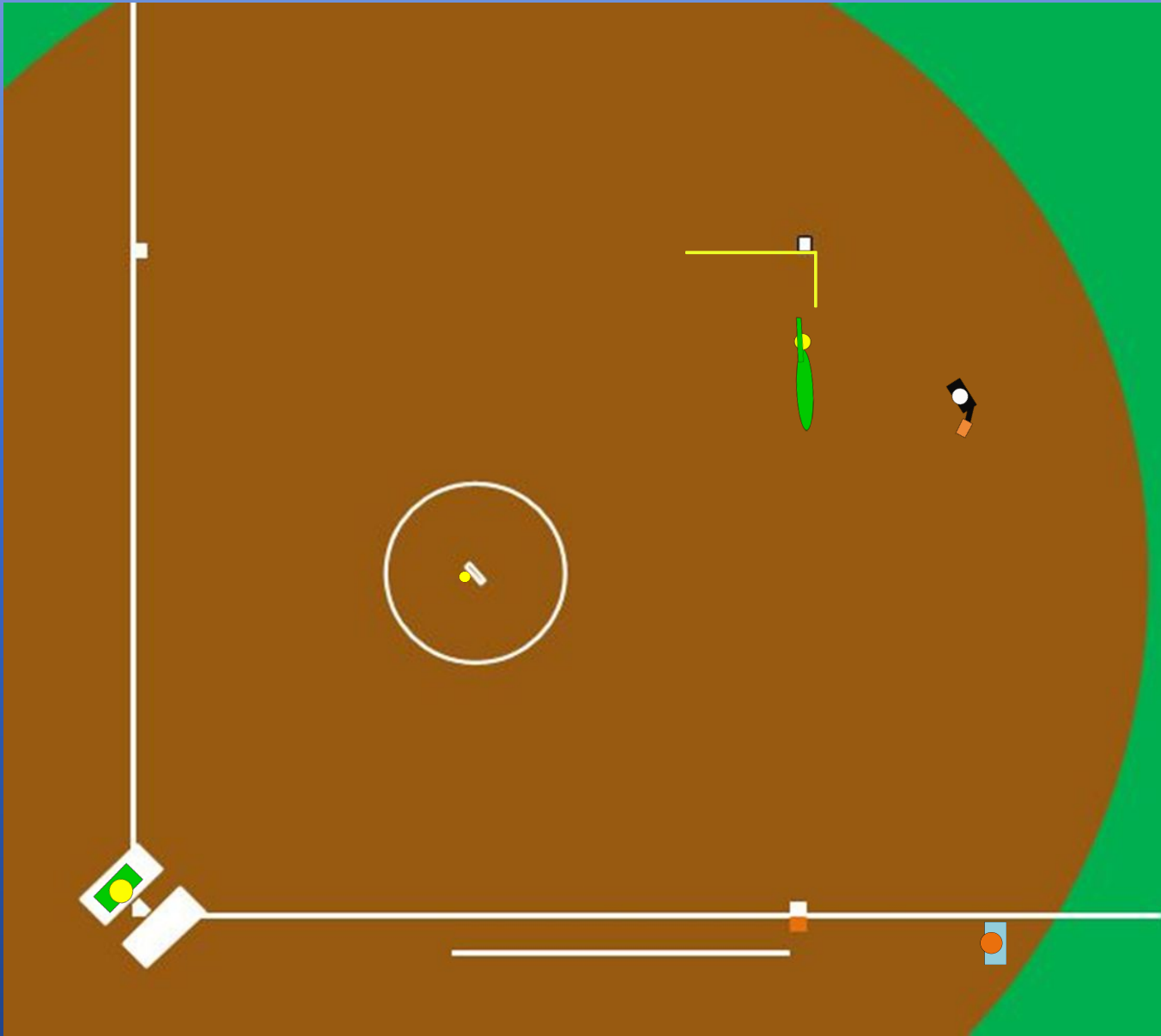


TAG PLAYS

Steal at 2B

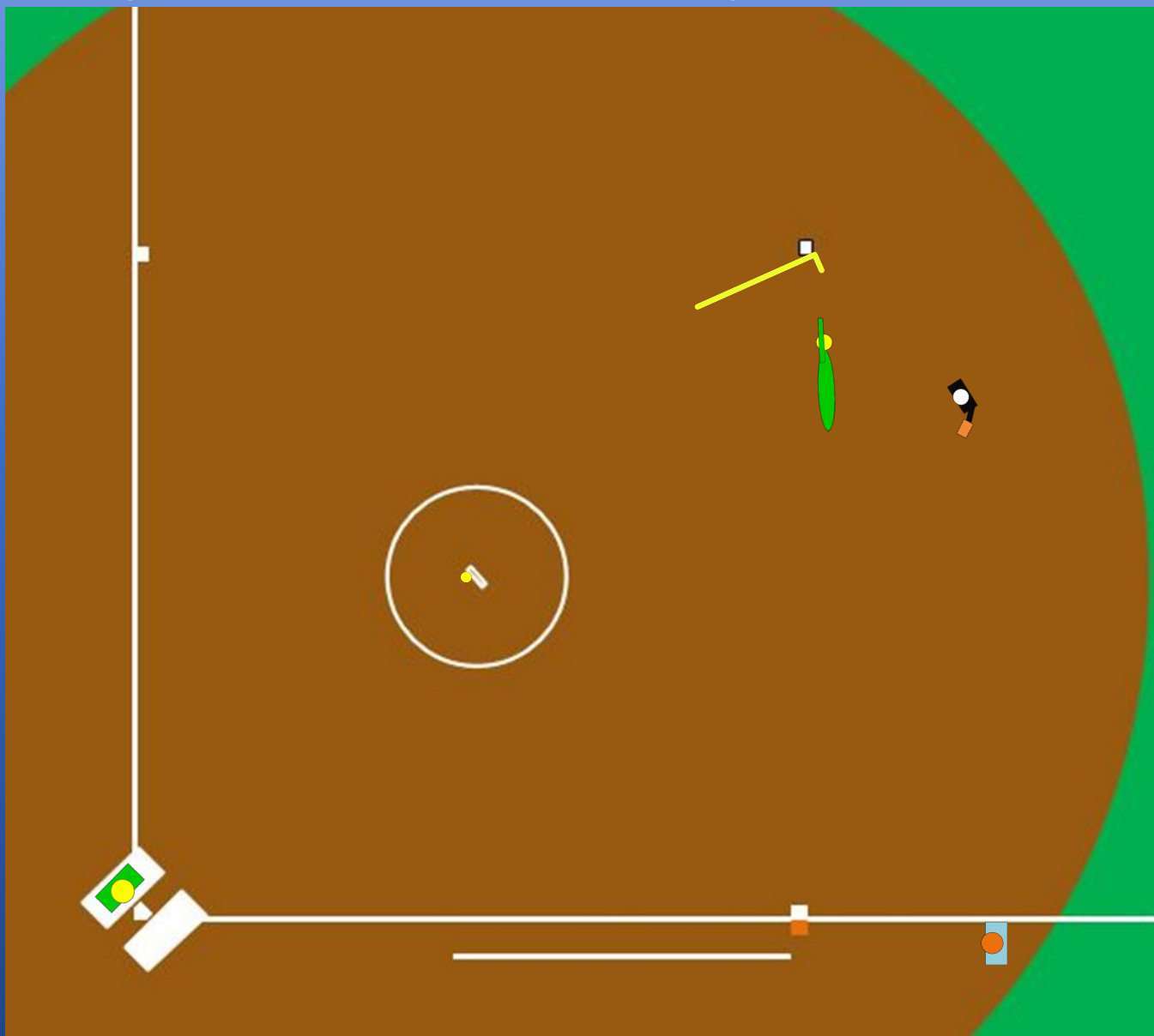


Extra base hit to outfield Primary Position



Extra base hit to outfield

Adjust to Secondary Position



VIEWS FROM DIFFERENT ANGLES

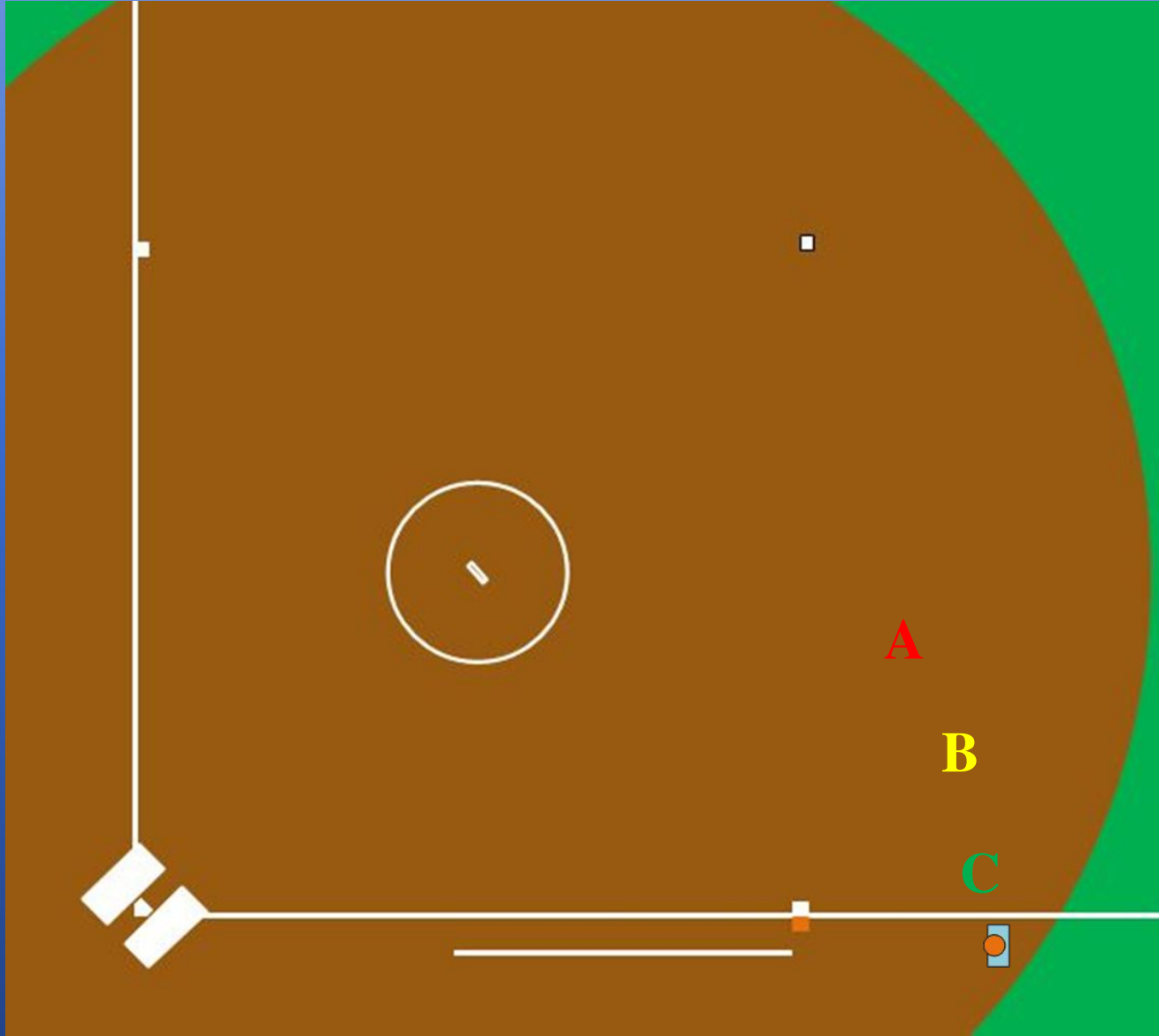
Throw from 3B



B

A

Throw from Short Stop, F3 pulled off bag for tag



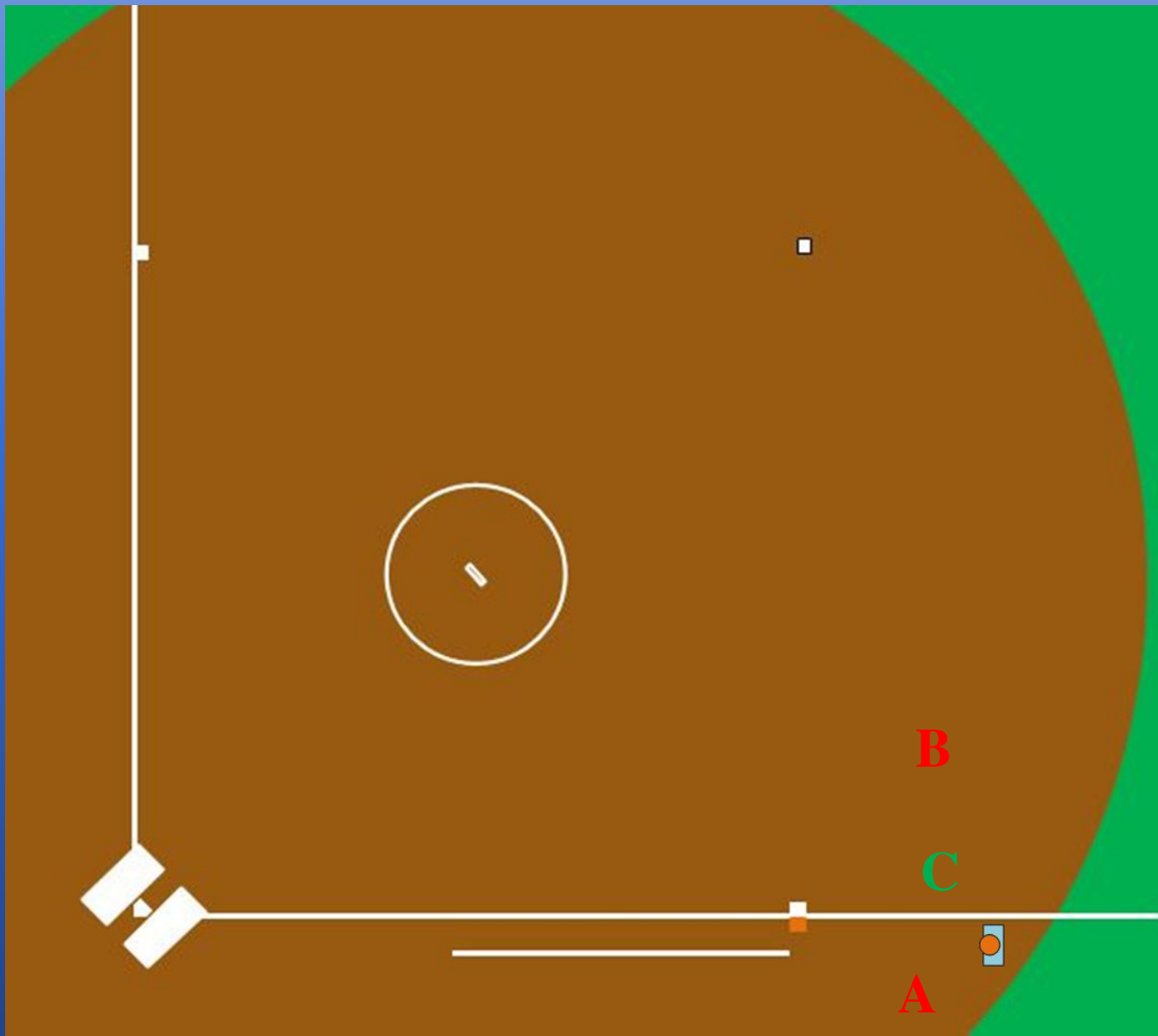
Tag at 1B



B

C
A

Views on throws from 2B

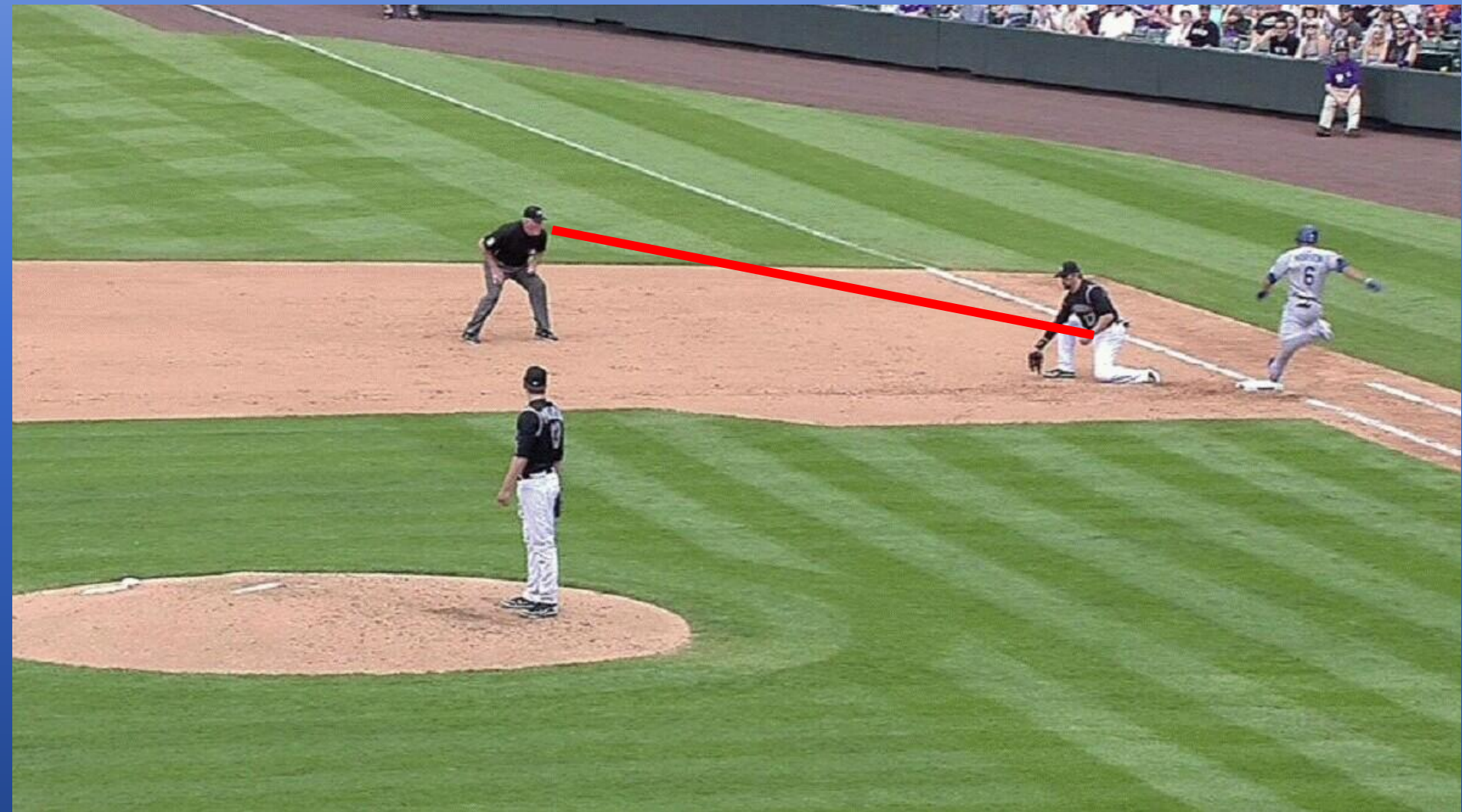


Throw from 2B



A B C

Throw From Short Stop Area



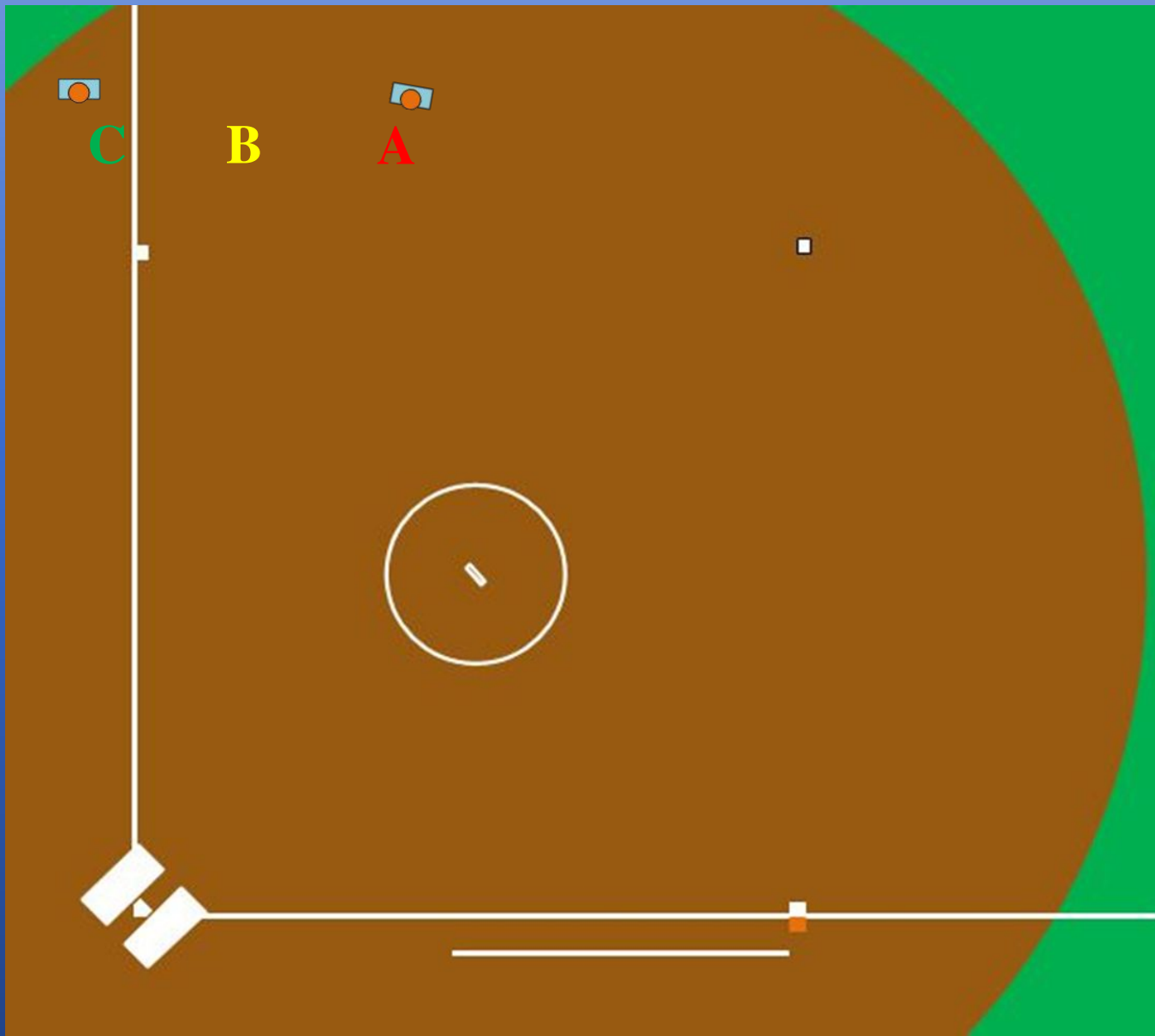
Throw From Short Stop Area



Pickoff at 2B



Views on Pickoff at 3B



Pickoff at 3B



Questions?

